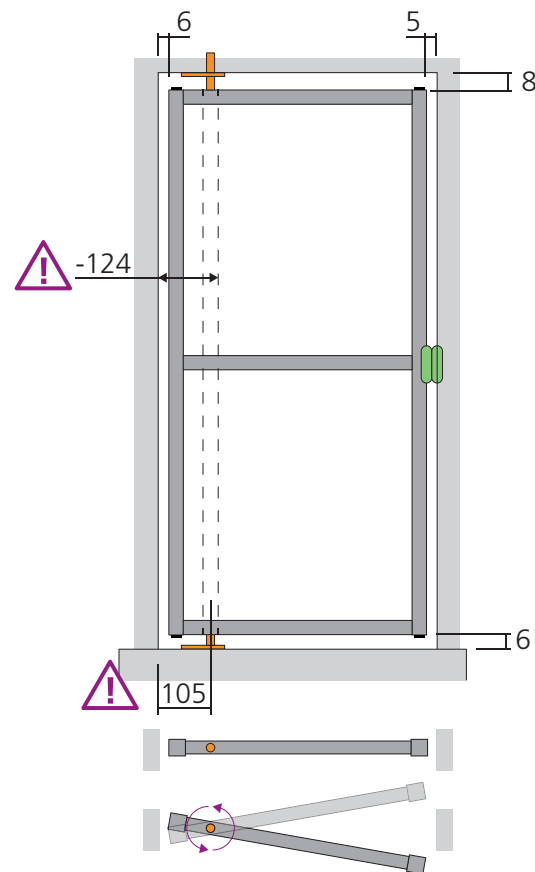
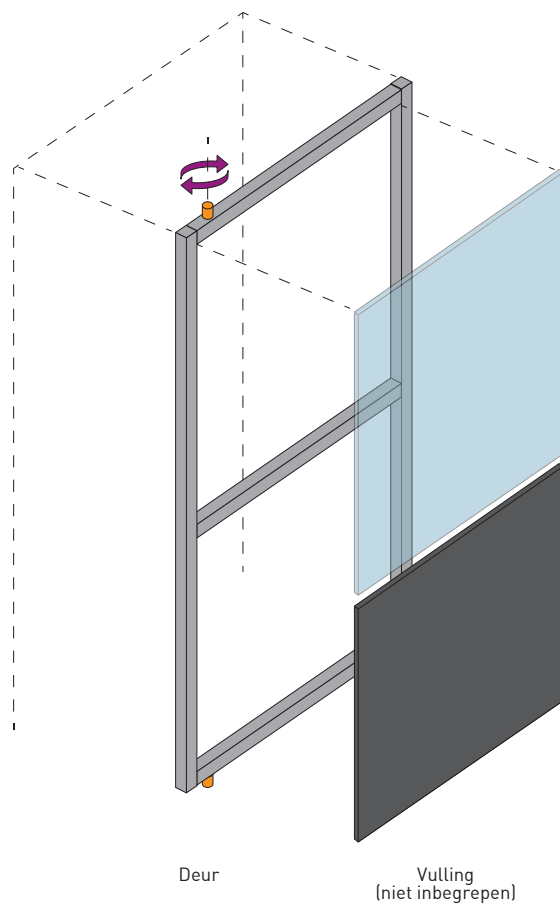


PIVOTDEUR

GLASSTRUCTUREN INTERIEUR

ALGEMENE PRESENTATIE

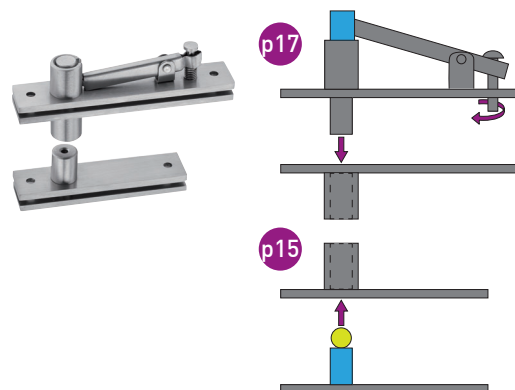


PIVOTDEUR

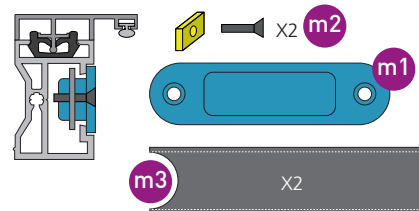
GLASSTRUCTUREN INTERIEUR

OMSCHRIJVING

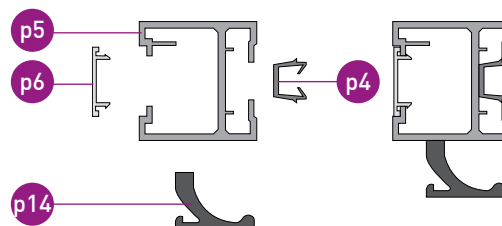
Principe van de pivot



Versie magnetisch slot



Optie deurgreep

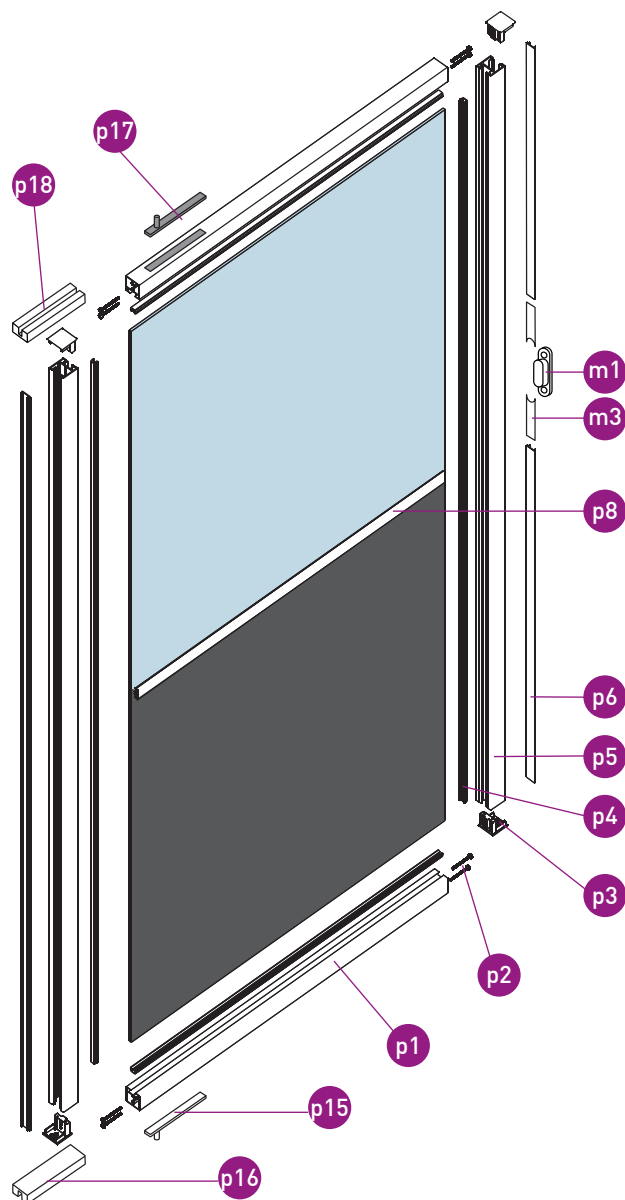


Nr	Aantal	Beschrijving
p 1	2	Travers boven en onder
p 2	8	Schroef 4,8 x 50 zelftappend
p 3	4	Verbindingsstukken
p 4	6	Glasprofiel 6/8
p 5	2	Deurprofiel
p 6	6	Afwerkingsprofiel
p 8	1	Horizontale travers
p 14	1 (+1)	Trekgreep **

** Optie trekgreep

m1	1 + 1	Magnetisch slot
m2	2 + 2	Moerplaat en schroeven
m3	2 + 2	Uitsparing 15 cm - Afwerkingsprofiel

p 15	1	Pivot onder en kogel
p 16	1	Bevestigingsblokken onder + 6 schroeven
p 17	1	Pivot boven
p 18	1	Bevestigingsblokken boven + 6 schroeven

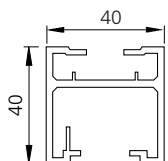
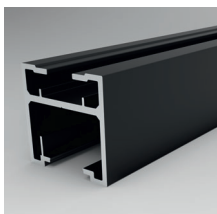


PIVOTDEUR

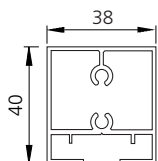
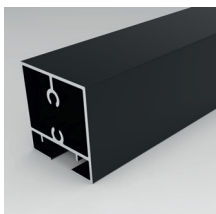
GLASSTRUCTUREN INTERIEUR

COMPONENTEN

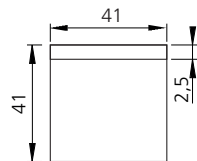
Deur



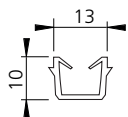
Deurprofiel



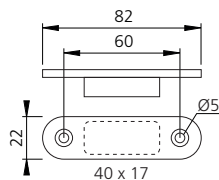
Travers boven
en onder



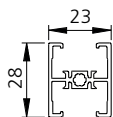
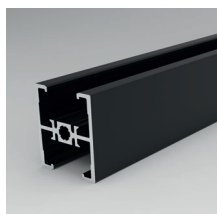
Verbindingsstukken



Dichtingsprofiel glas

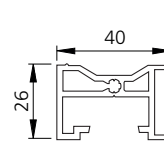
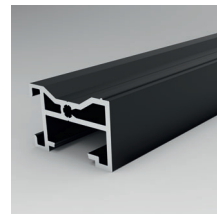


Magnetisch slot

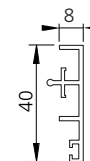
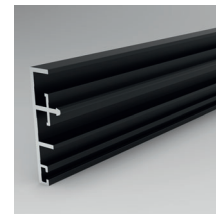


Horizontale
travers

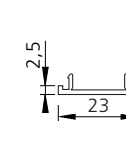
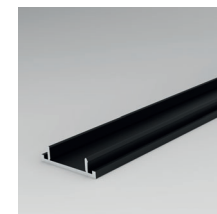
Kozijn



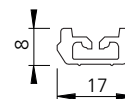
Kozijnprofiel



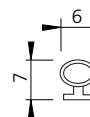
Slaglat kozijn



Afwerkingsprofiel



Clip



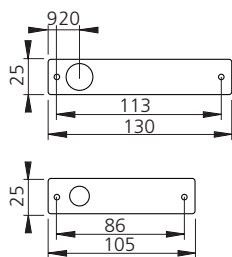
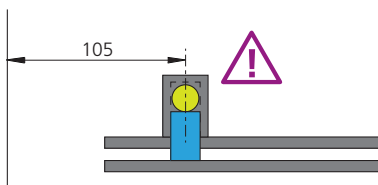
Dempingprofiel

PIVOTDEUR

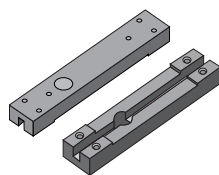
GLASSTRUCTUREN INTERIEUR

COMPONENTEN

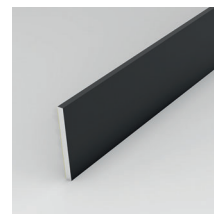
Pivot



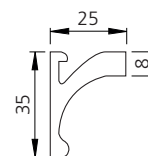
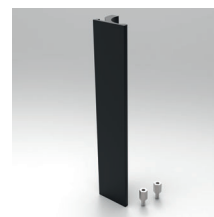
Pivot boven en onder
(te integreren in het
plafond en de vloer)



Bevestigingsblokken

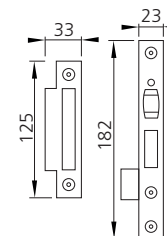


Kleefprofiel voor
verdeling

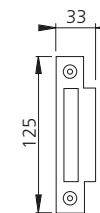


Trekgreep

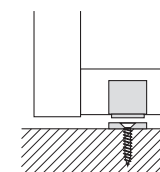
Opties



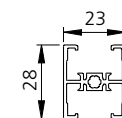
Optie voor draaideur
Rolslot met
met halve cilinder



Optie voor draaideur
Sluitplaat
voor rolslot



Magnetische
stop inbouw



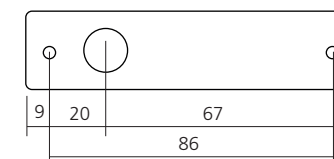
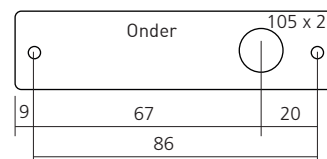
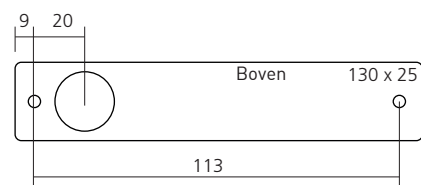
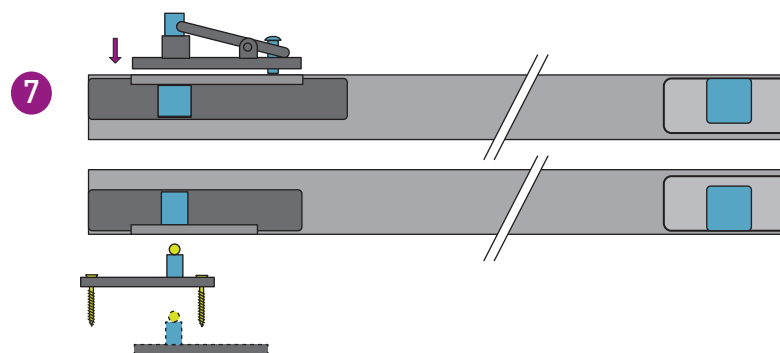
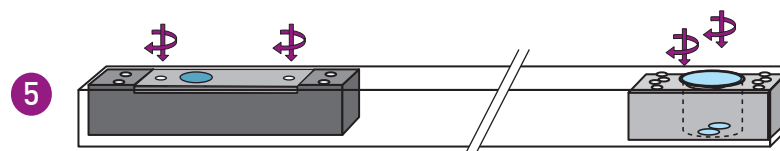
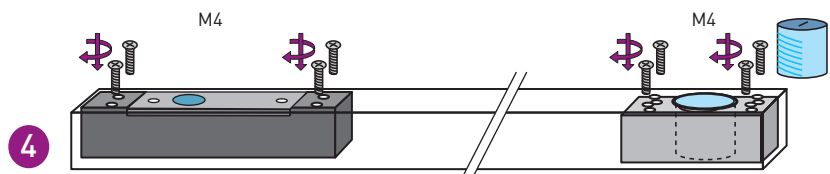
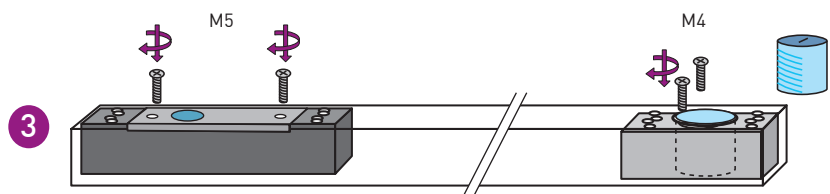
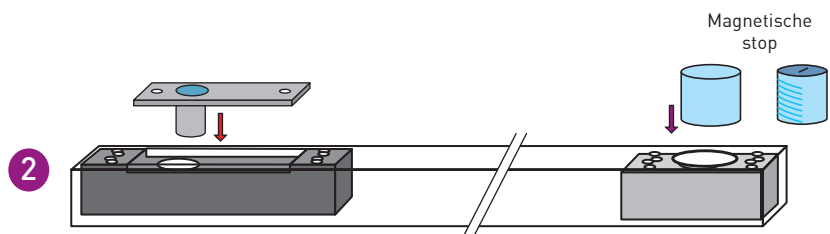
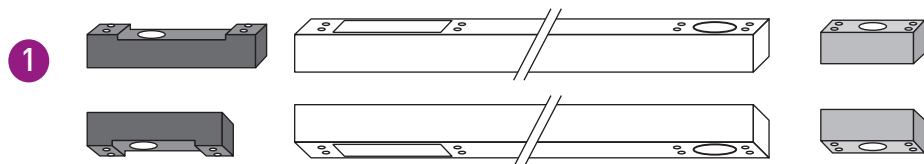
Extra
horizontale travers

PIVOTDEUR

GLASSTRUCTUREN INTERIEUR

ASSEMBLEREN EN PLAATSEN VAN DE DEUR

1 - Installeer de bevestigingsblokken

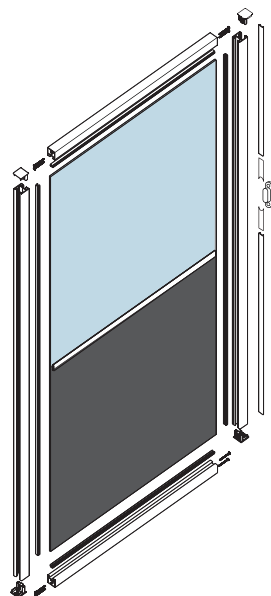


PIVOTDEUR

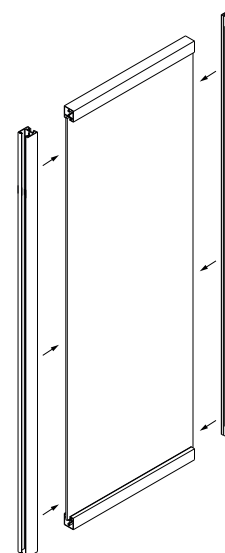
GLASSTRUCTUREN INTERIEUR

ASSEMBLEREN EN PLAATSEN VAN DE DEUR

2 - Assembleer het kader



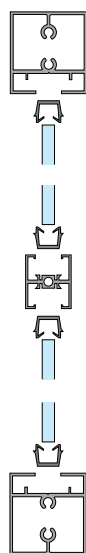
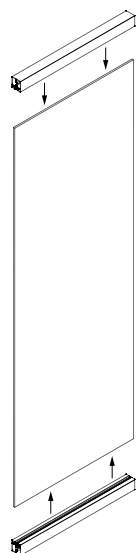
2b - Plaatsing van de profielen



OPGELET :
Plaats de zelftappende schroeven
niet in deze stap,
zie stap 2d.

2a - Plaatsing van travers boven en onder

Met vullingen



Travers boven

Dichtingsprofiel glas

Vulling

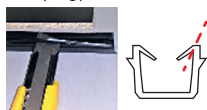
Dichtingsprofiel glas

Horizontale travers

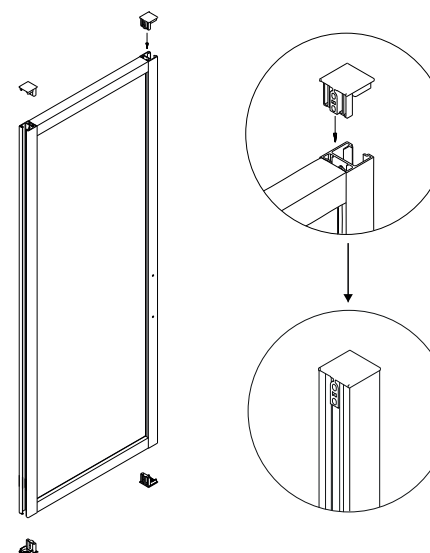
Travers onder

OPGELET :
dichtingsprofiel glas vóór
montage aan te brengen.

Paneel van 8 mm of 44/2 :
snij één lip van het
dempingprofiel af.



2c - Plaatsing van de verbindingstukken

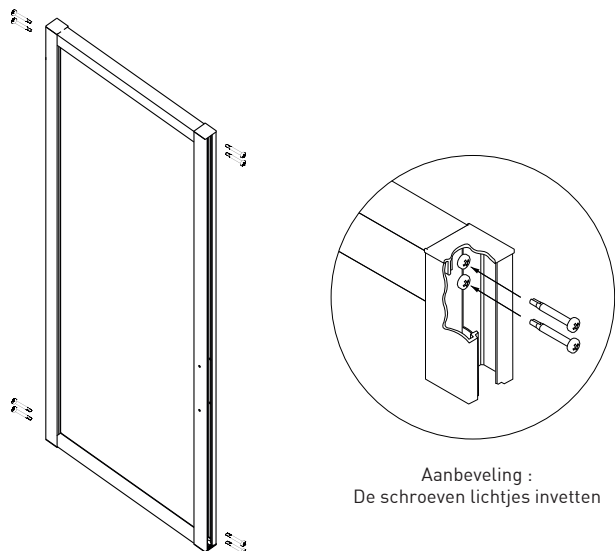


PIVOTDEUR

GLASSTRUCTUREN INTERIEUR

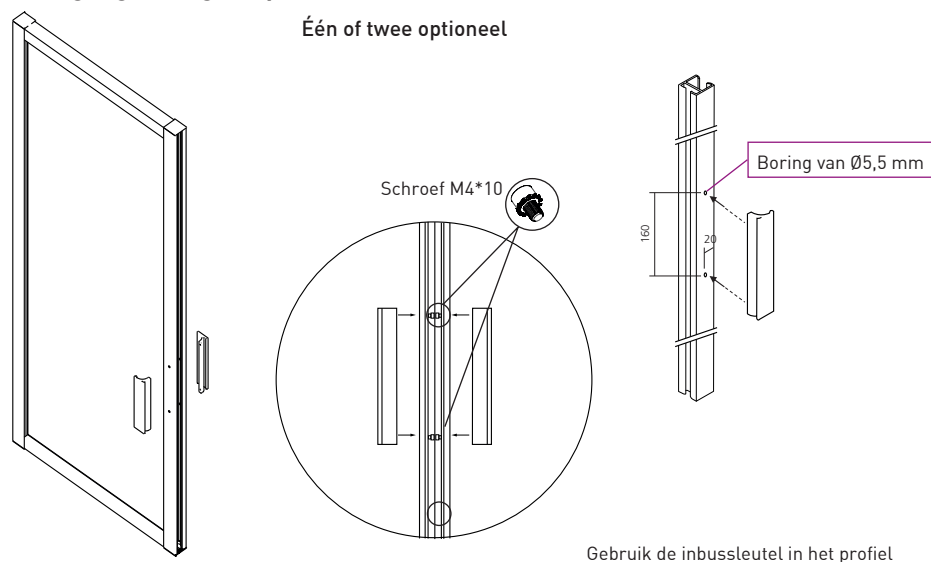
ASSEMBLEREN EN PLAATSEN VAN DE DEUR

2d - Deurbevestiging met zelftappende schroeven 4*8 x 50



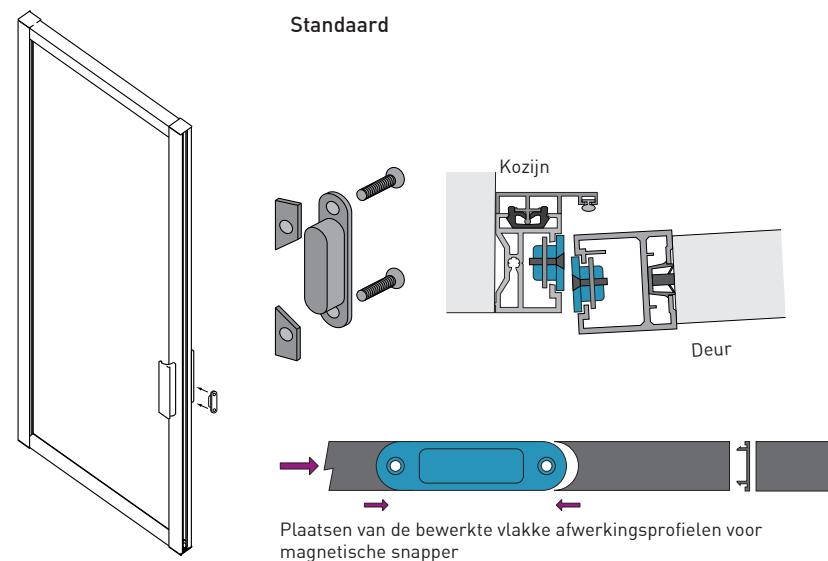
2e - Bevestiging trekgreep

Eén of twee optioneel

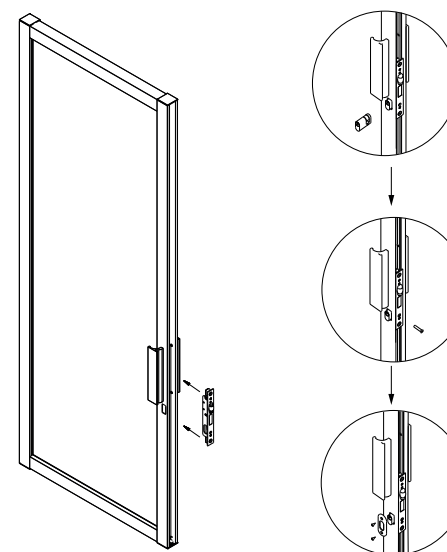


2f - Montage en plaatsing van magnetische snapper

Standaard



2f Bis - Optie : Montage rolslot met halve cilinder



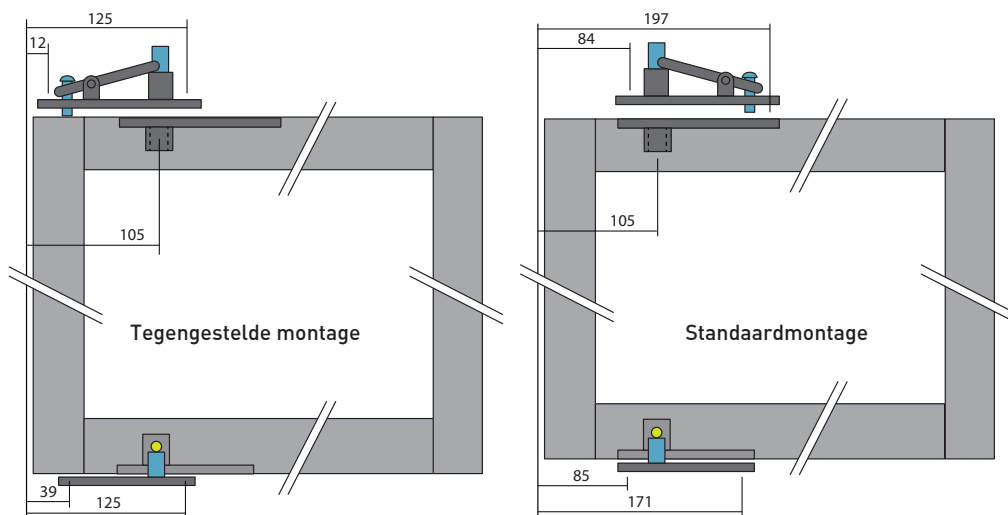
PIVOTDEUR

GLASSTRUCTUREN INTERIEUR

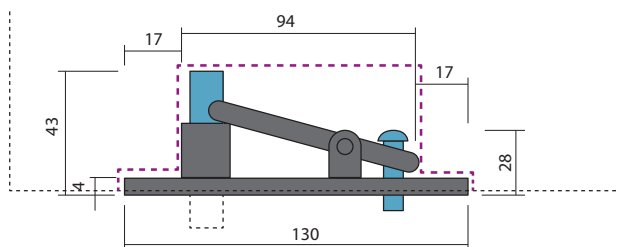
INSTALLATIE VAN DE PIVOTS

3 - Integreer de pivot boven in het plafond

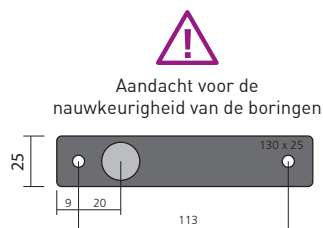
Controleer de sterkte van het bevestigingsmateriaal en de schroef.



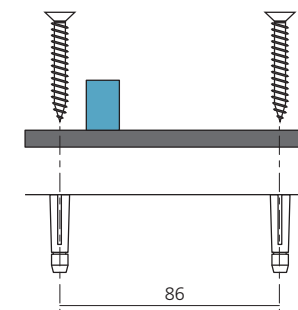
Tegengestelde montage wordt aanbevolen indien minimalisme primeert, de in het plafond en de vloer geïntegreerde pivots zijn desgevallend verborgen wanneer de deur open is. Controleer voor dit type montage de sterkte van het bevestigingsmateriaal tussen de staander en de rand van de pivot boven



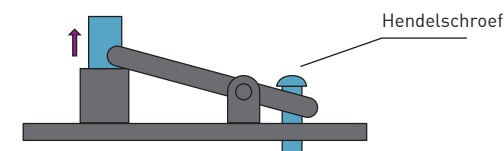
Afmetingen van de pivot boven in het plafond



4 - Plaats de onderste pivot op de vloer



5 - Zet de as van de pivot boven omhoog door de hendelschroef vast te draaien



6 - Installeer de deur op de pivot onder en op de kogel



Om dit te vereenvoudigen :

- 1 - Breng wat smeervet aan op het punt om de kogel te fixeren.
- 2 - Hou de deur rechtop in de open positie.

7 - Laat de as van de pivot boven zakken door de hendelschroef los te draaien

