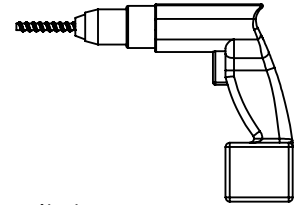
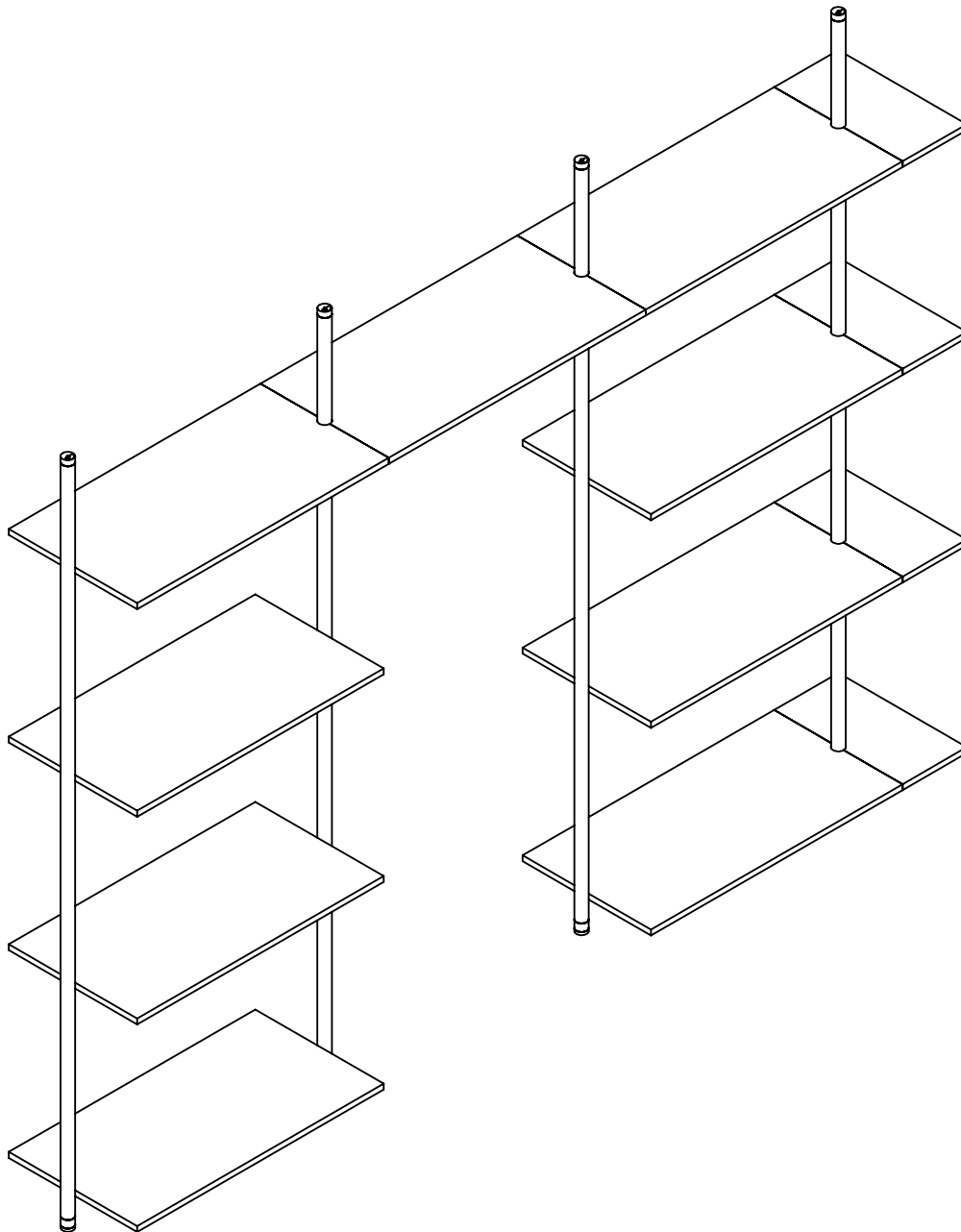
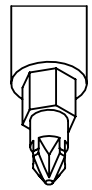


CYCLOS

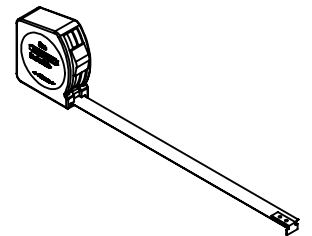
C - Istruzioni di montaggio morsetti
C - Clamp assembly instructions



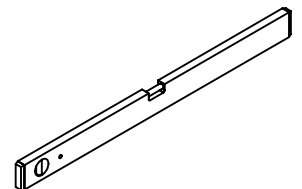
avvitatore
screwdriver



inserto a stella
Star shape insert



metro
meter

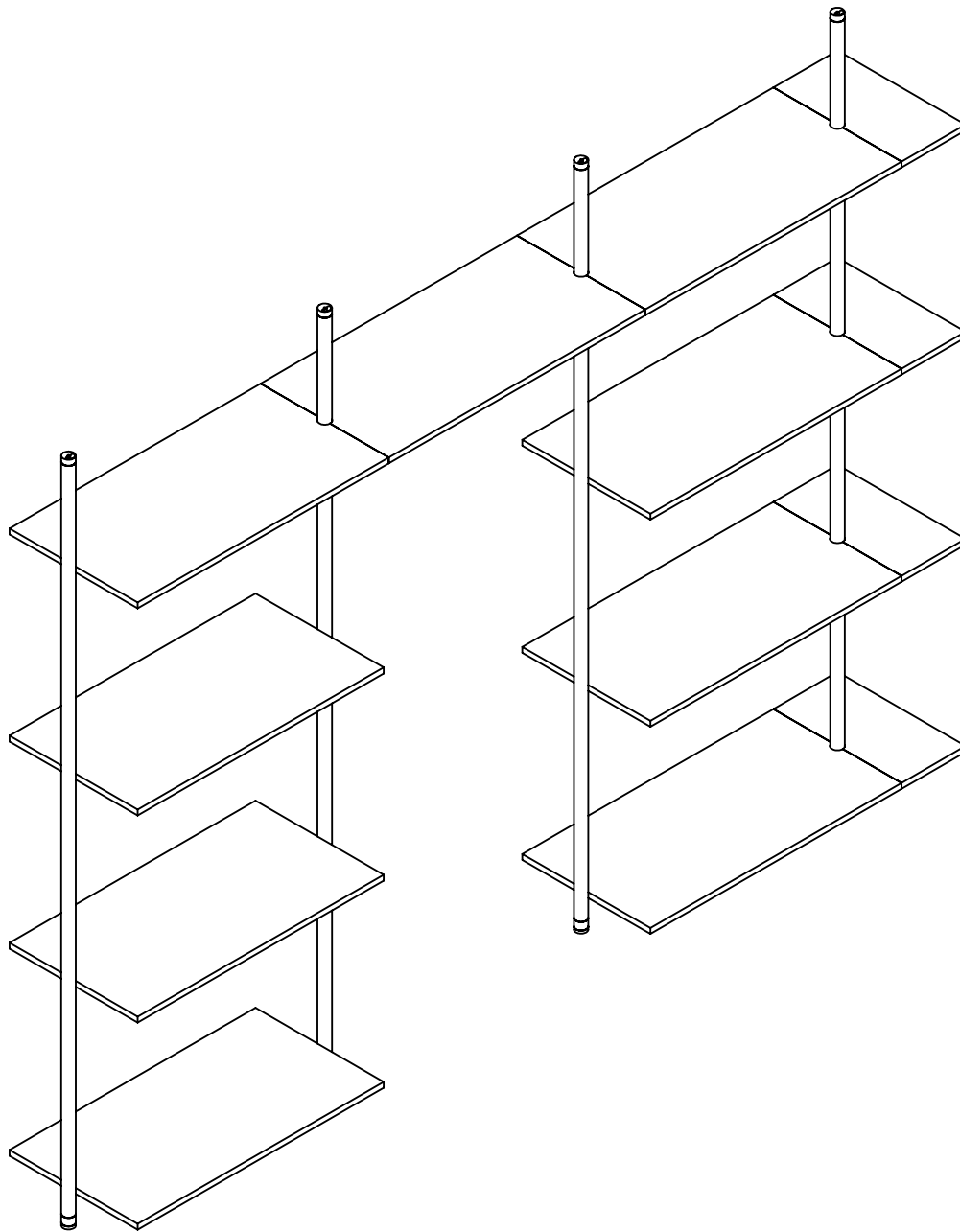


livella
level

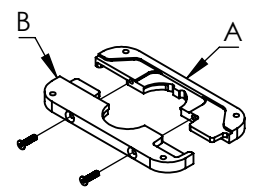
CYCLOS

C - Istruzioni di montaggio morsetti

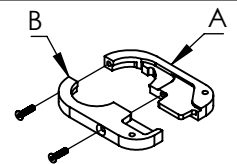
C - Clamp assembly instructions



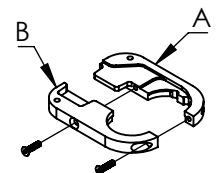
F E R R A M E N T A



Morsetto centrale
Central clamp



Morsetto terminale destro
Right end clamp



Morsetto terminale sinistro
Left end clamp

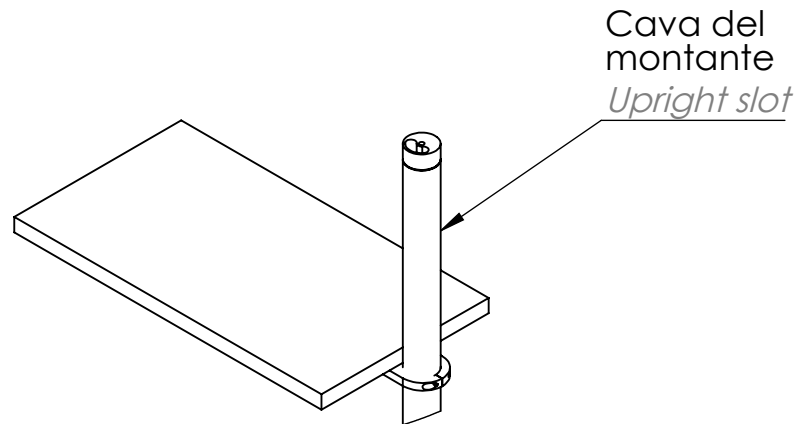
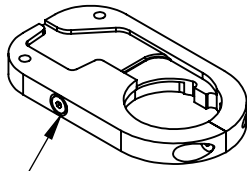
CYCLOS

C - Istruzioni di montaggio morsetti *C - Clamp assembly instructions*

C1

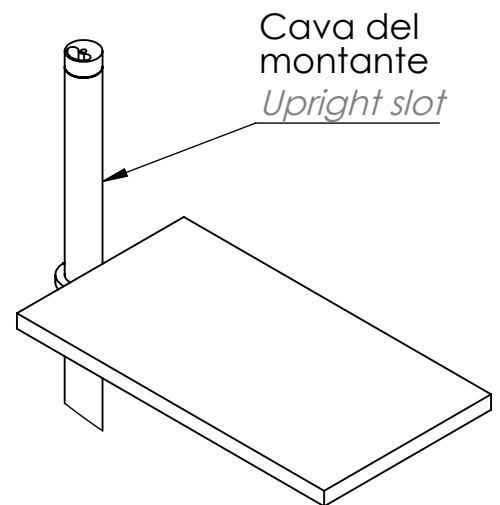
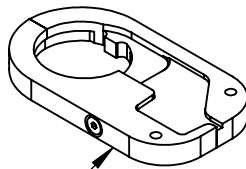
Morsetto terminale sinistro *Left end clamp*

i fori svasati
sono rivolti
verso il basso
*the countersunk
holes are turned
downward*



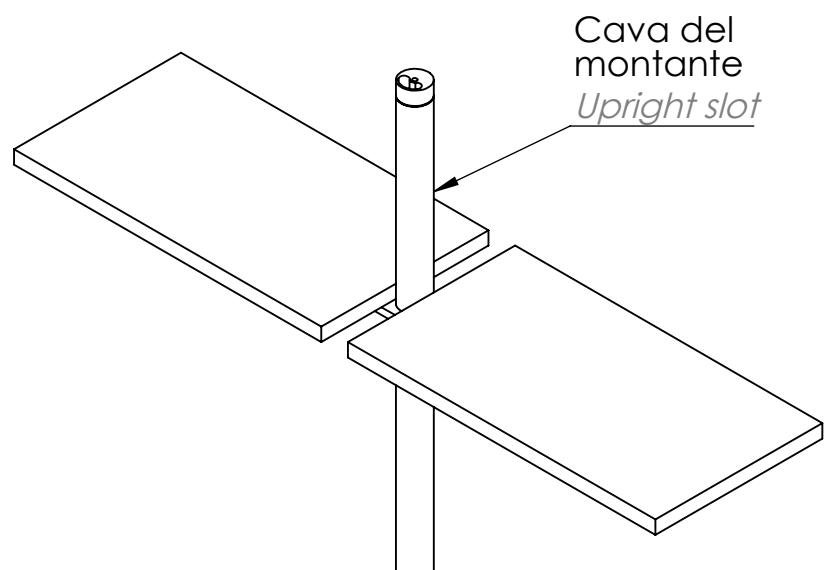
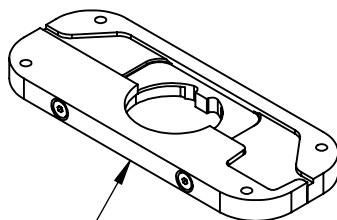
Morsetto terminale destro *Right end clamp*

i fori svasati
sono rivolti
verso il basso
*the countersunk
holes are turned
downward*



Morsetto centrale *Central clamp*

i fori svasati
sono rivolti
verso il basso
*the countersunk
holes are turned
downward*



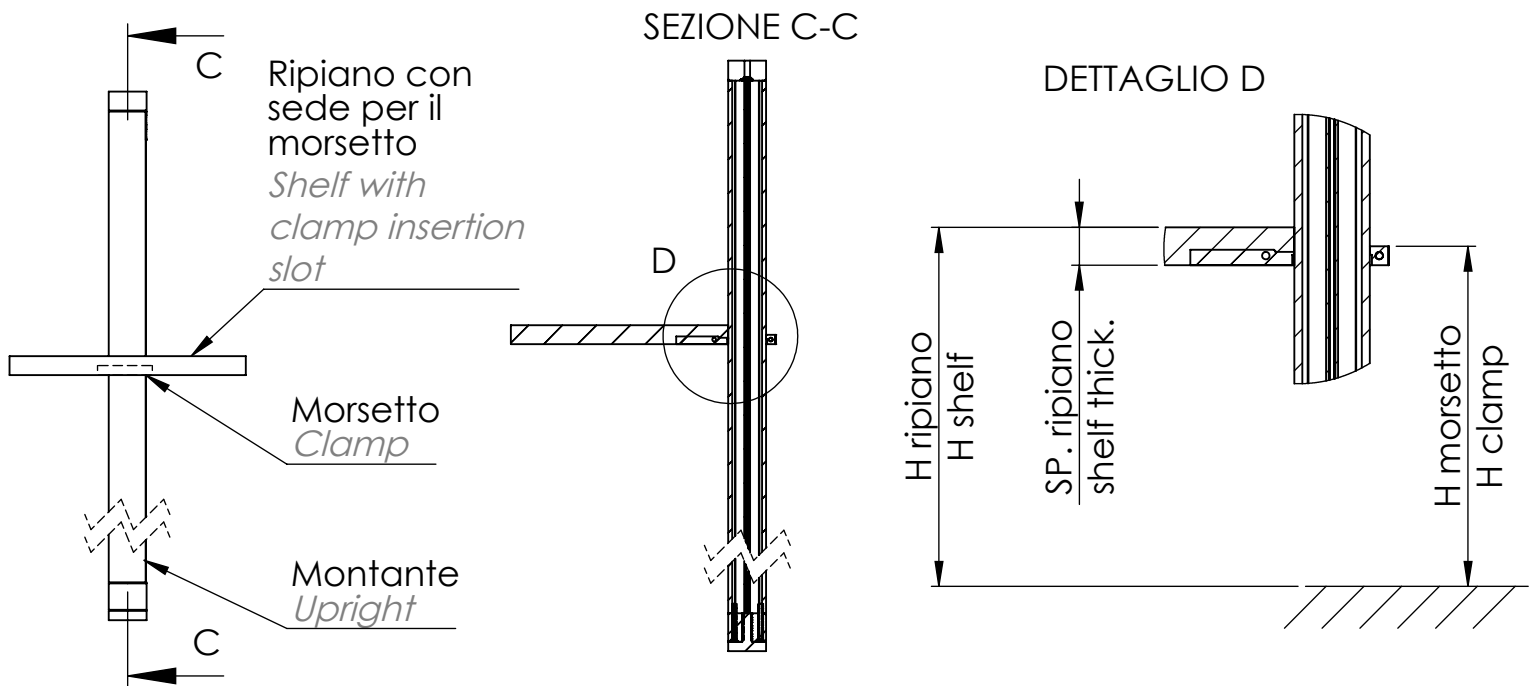
CYCLOS

C - Istruzioni di montaggio morsetti C - Clamp assembly instructions

C2a Ripiano con sede per morsetto *Shelf with clamp insertion slot*

$$H \text{ morsetto} = H \text{ ripiano} - SP. \text{ ripiano} + 10\text{mm}$$

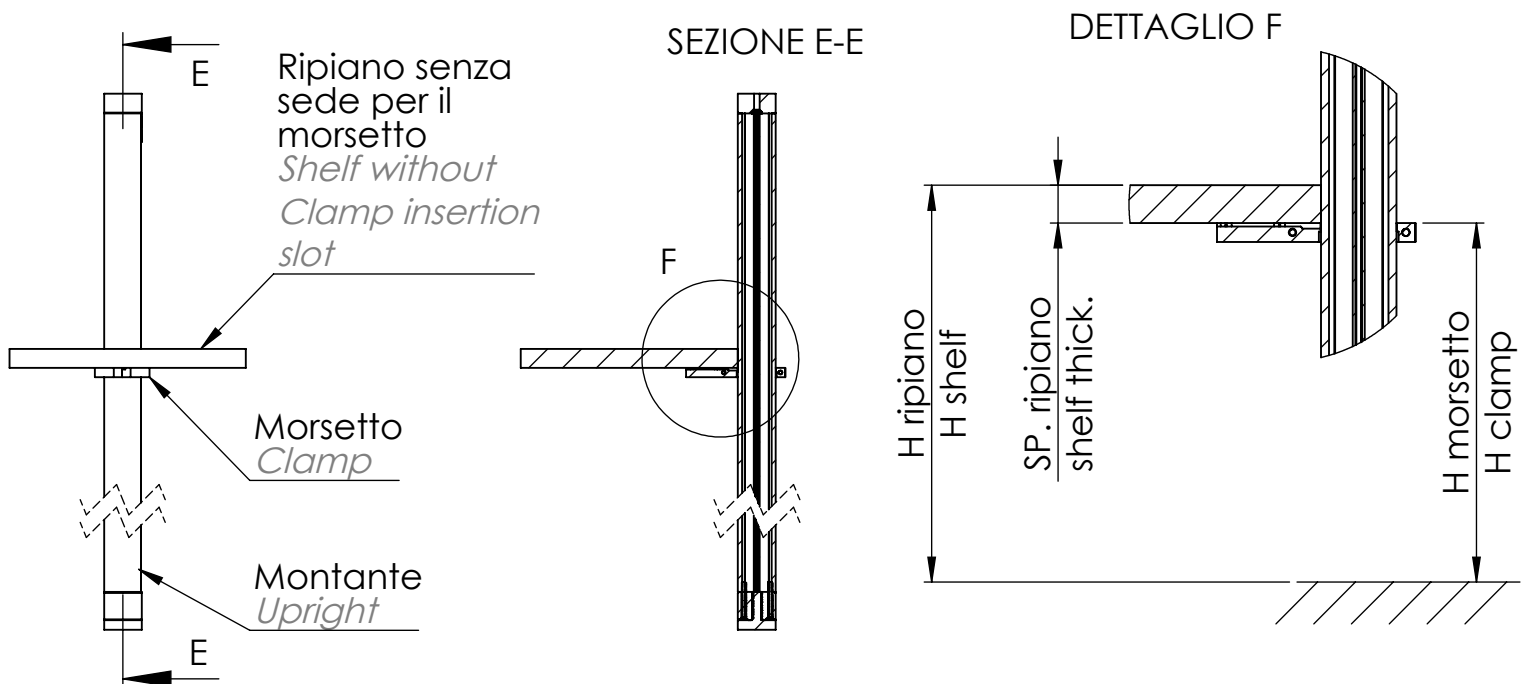
$$H \text{ clamp} = H \text{ shelf} - \text{shelf thick.} + 10\text{mm}$$



C2b Ripiano senza sede per morsetto *Shelf without Clamp insertion slot*

$$H \text{ morsetto} = H \text{ ripiano} - SP. \text{ ripiano}$$

$$H \text{ clamp} = H \text{ shelf} - \text{shelf thick.}$$

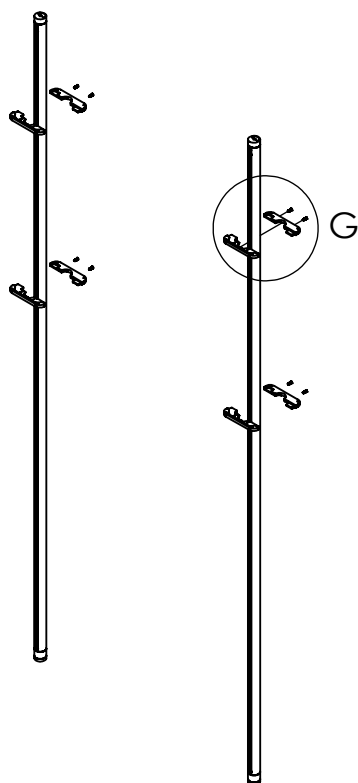


CYCLOS

C - Istruzioni di montaggio morsetti

C - Clamp assembly instructions

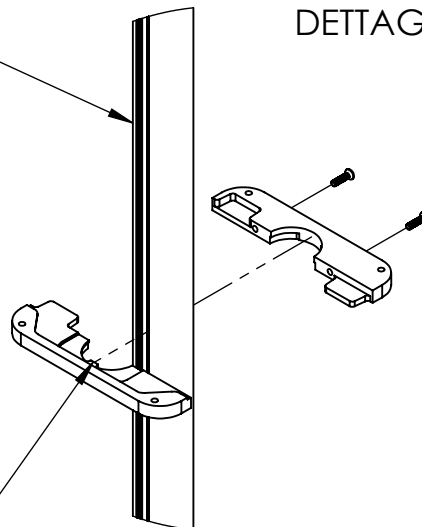
C3



Cava del
montante
Upright slot

DETTAGLIO G

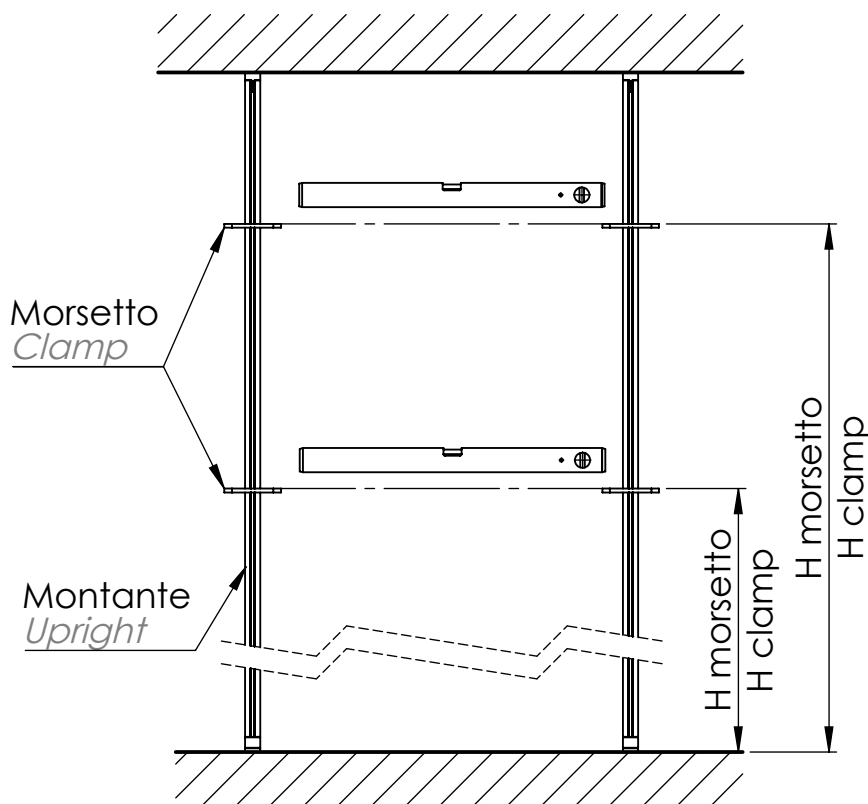
Dente del
morsetto
Clamp prog



Posizionare i morsetti alla corretta altezza
precedentemente calcolata, con un fissaggio
morbido delle viti

*Place the clamps at the previously calculated
correct height, by a soft fixing of the screws*

C4



Controllare la planarità dei
morsetti dello stesso ripiano
*Check the flatness of the clamps
of the same shelf*

Serrare le viti che fermano le due
parti (A e B) del morsetto
ancorandolo stabilmente al
montante

*Tighten the screws that secure
the two parts (A and B) of the
clamp anchoring it stably to the
upright*

Viti
fissaggio
morsetto
*Clamp fixing
screws*

