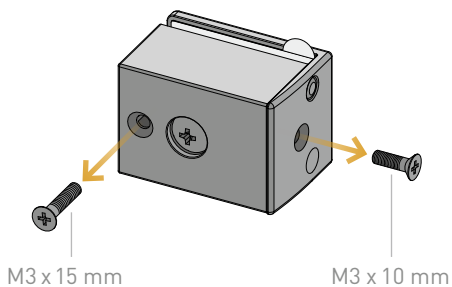
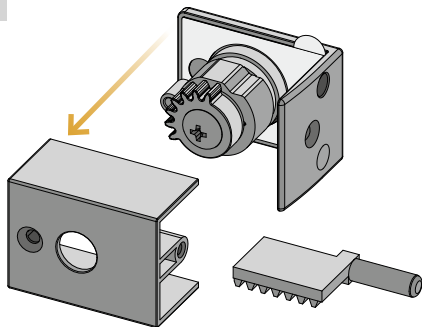


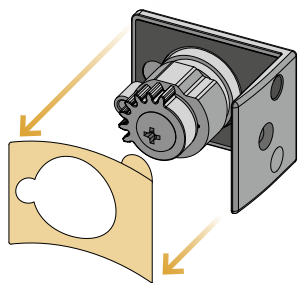
1



2

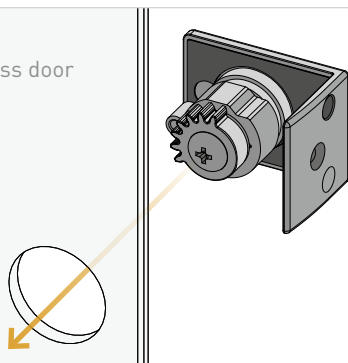


3



4

Glass door



| CADRO Glass display case

Glass door lock. Assembly instructions.

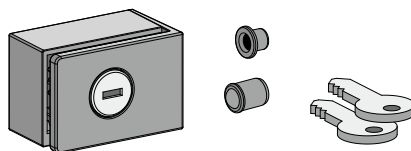
10

Bushing
for latch

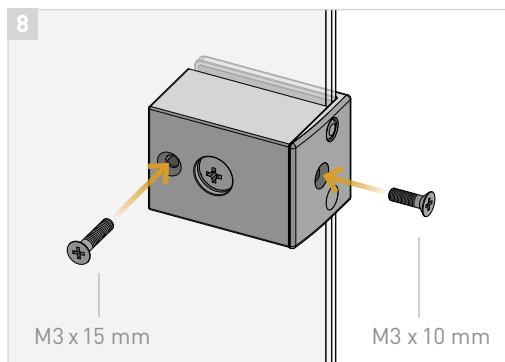
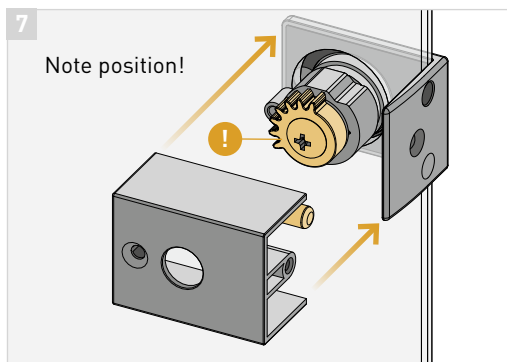
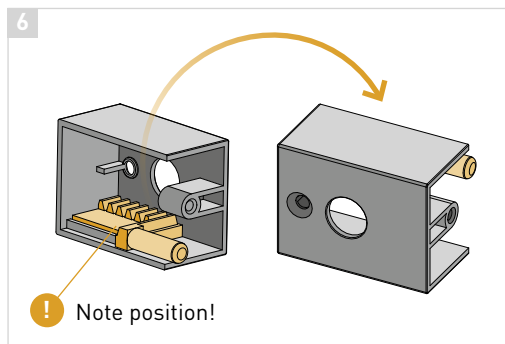
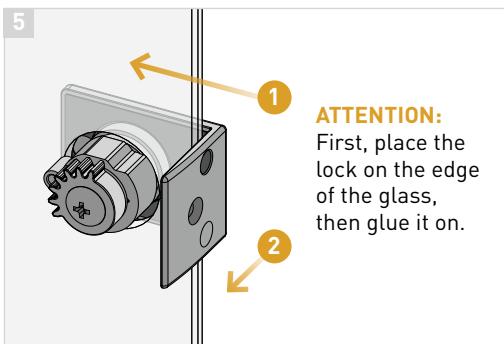
Glass door

Ball
catch

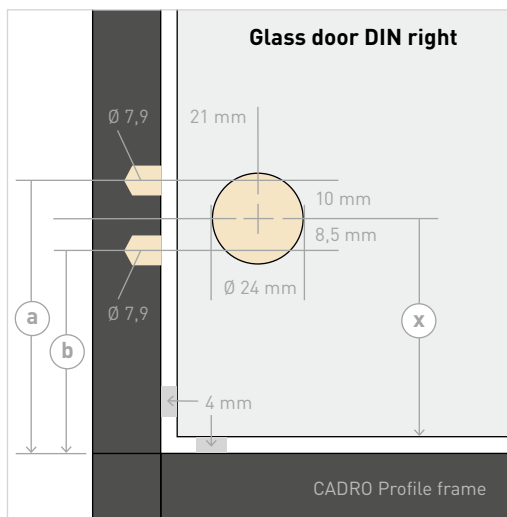
Contents.



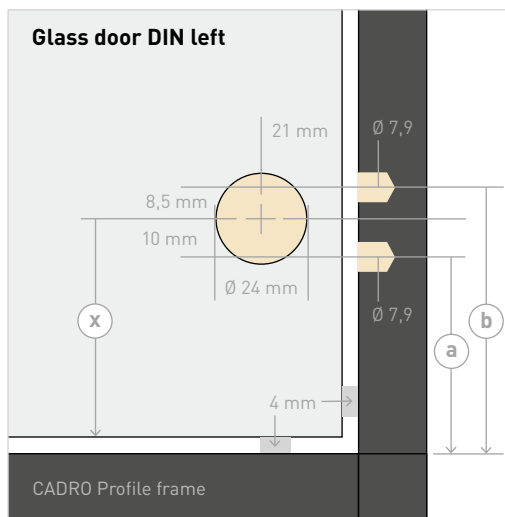
- 1x Lock with premounted screws
- 1x Bushing for latch
- 1x Ball catch
- 2x Key



9 Drilling dimensions for profiles and glass door.



- (x) $x_{\min} = 50 \text{ mm}$
- (a) Hole for latch = $x + 14 \text{ mm}$
- (b) Hole for ball catch = $x - 4,5 \text{ mm}$



- (x) $x_{\min} = 50 \text{ mm}$
- (a) Hole for latch = $x - 6 \text{ mm}$
- (b) Hole for ball catch = $x + 12,5 \text{ mm}$