

CLIP top BLUMOTION CRISTALLO



Planning

Hinge dimensions and gap calculation based on factory setting (mounting plate spacing = 0 mm)

Front protrusion at 90° opening angle

Overlay application

A	Cabinet front edge to centre of mounting plate drilling
	20 mm with mounting plate A20
	37 mm with mounting plate A37
FA	Front overlay

Dual application

A	Cabinet front edge to centre of mounting plate drilling
	20 mm with mounting plate A20
	37 mm with mounting plate A37
FA	Front overlay

Inset application

A	Cabinet front edge to centre of mounting plate drilling
	21.5 mm + front thickn. FD with mounting plate A20
	38.5 mm + front thickn. FD with mounting plate A37

Front Overlay in mm (FA) in relation to Distance K

Front Overlay in mm (FA)		-3.5	-3	-2.5	-2	-1.5	-1	2.5	4	5.5	7	8.5	10	11.5	13	14.5	16	17.5	19
MD		-3.5	-3	-2.5	-2	-1.5	-1	2.5	4	5.5	7	8.5	10	11.5	13	14.5	16	17.5	19
0	0	0.5	1	1.5	2	2.5	3	3.5	4	4.5	5	5.5	6	6.5	7	7.5	8	8.5	9
3	3	3.5	4	4.5	5	5.5	6	6.5	7	7.5	8	8.5	9	9.5	10	10.5	11	11.5	12
6	6	6.5	7	7.5	8	8.5	9	9.5	10	10.5	11	11.5	12	12.5	13	13.5	14	14.5	15
9	9	9.5	10	10.5	11	11.5	12	12.5	13	13.5	14	14.5	15	15.5	16	16.5	17	17.5	18
MD	Mounting plate spacing (mm)																		

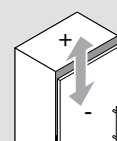
Due to the risk of breakage to glass and mirror doors, sufficient gaps are required on all four edges (recommendation: min. 2 mm).

Distance K

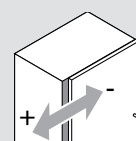
FA	Front overlay
K	Distance K
MD	Mounting plate spacing (mm)
	$K = FA + 3.5 \text{ mm} + MD$

KT Adhesion plate distance

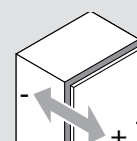
Adjustment



max. $\pm 3.0 \text{ mm}$
See mounting plates



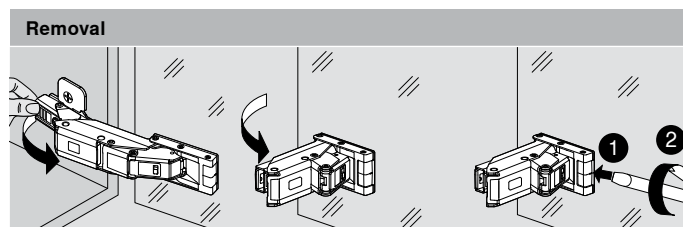
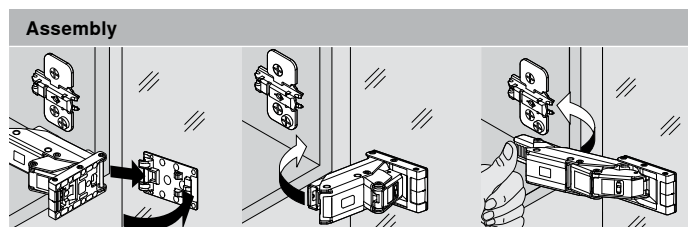
$\pm 2.0 \text{ mm}$



+3.0 mm
-2.0 mm

Note

Please contact your glass or front supplier concerning the selection and use of the adhesive in attaching the mounting/adhesive plate to glass and mirrors.



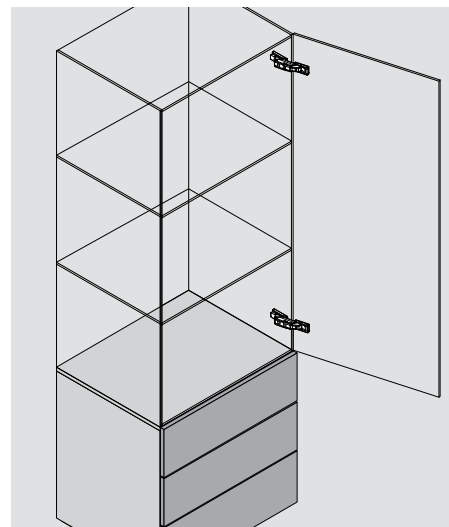
CLIP top BLUMOTION CRISTALLO



Order specification Glass display cabinets




- Hinge for glass display cabinets
- Mounting/adhesion plate is glued on (no glass drilling necessary)
- CLIP top BLUMOTION with integrated BLUMOTION (and deactivation option)
- CLIP top with or without closing mechanism (spring)
- 110° opening angle
- 3-dimensional front adjustment
- Tool-free front to cabinet assembly and removal




Inset application



	Boss		CRISTALLO 110°	
	Hinge	Spring	Colour	Part no.
	CLIP top BLUMOTION	●	NI ONS	71B4500C
	CLIP top	●	NI	71T4500C
	CLIP top	○	NI	70T4500CTL
●	With spring		NI	Nickel plated
○	Unsprung		ONS	Onyx black

	CRISTALLO adhesion plate	
	Glue-on	
Front material	Colour	Part no.
Glass/mirror	Matt-nickel plated	70T4568C
Mirror	Special nickel plated	70T4568C

	CRISTALLO mounting plate	
	Glue-on	
Front material	Colour	Part no.
Glass/mirror	Matt-nickel plated	175M4C20N

Accessories

	Hinge arm cover cap		
	Print/Stamp	Logo	Part no.
	Plain	–	NI ONS
	Stamped	Blum	NI
			70.4503
			70.4503.BP

	Opening angle stop	
	Opening angle	Part no.
	85°	Dark grey
	92°	R7037 dust grey
		70T4503
		70T4503.09

Disclaimer of liability

If the Blum fittings are installed according to instructions and on suitable glass and mirror fronts, they will meet the requirements concerning the stability of the connection.

This is monitored through internal and external testing.

As the adhesive and/or the adhesive process are beyond our control, Blum cannot accept liability for claims arising from the failure or malfunction of this/these process/es.

It is recommended that the adhesive be applied by an experienced glass manufacturer.

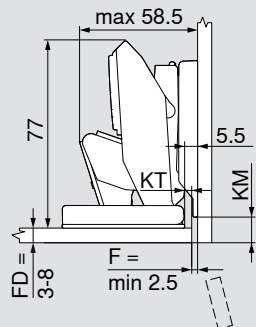
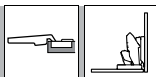
CLIP top BLUMOTION CRISTALLO



Planning Glass display cabinets

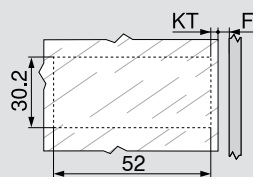
Hinge dimensions and gap calculation based on factory setting (mounting plate spacing = 0 mm)

Inset application



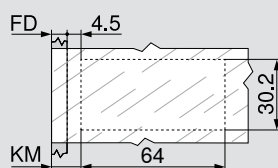
FD	Front thickness
F	Gap
KM	Mounting plate distance
KT	Adhesion plate distance

Adhesion plate distance



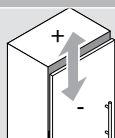
F	Gap
KT	Adhesion plate distance
$KT = 5.5 \text{ mm} - F$	

Mounting plate distance

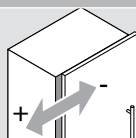


FD	Front thickness
KM	Mounting plate distance
$KM = FD + 4.5 \text{ mm}$	

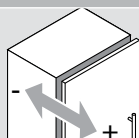
Adjustment



Max. $\pm 2.0 \text{ mm}$



$\pm 2.0 \text{ mm}$

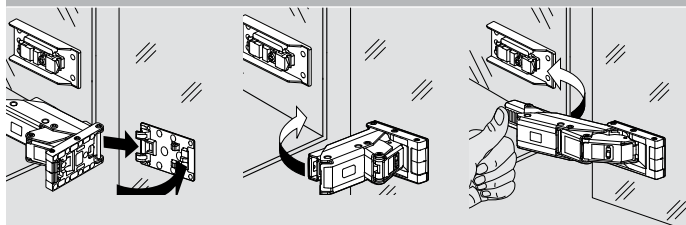


+3.0 mm
-2.0 mm

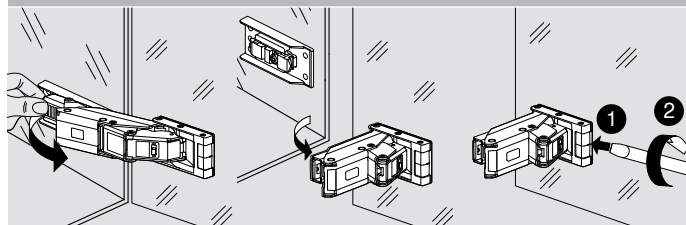
Note

Please contact your glass or front supplier concerning the selection and use of the adhesive in attaching the mounting/adhesive plate to glass and mirrors.

Assembly



Removal



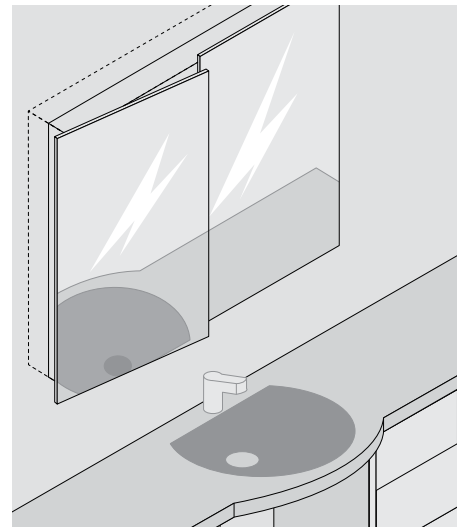
CLIP top BLUMOTION CRISTALLO



Order specification Bathroom mirror cabinets with fronts that protrude all the way around




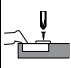
- Mounting plate is glued on to the front
- Boss hole on the cabinet
- CLIP top BLUMOTION with integrated BLUMOTION (and deactivation option)
- CLIP top without closing mechanism (spring)
- Opening angle 95°
- 3-dimensional front adjustment
- Tool-free front to cabinet assembly and removal
- With INSERTA tool-free hinge to door assembly




Hinge with double cranked hinge arm



	Boss		INSERTA	
	Hinge	Spring	Colour	Part no.
	CLIP top BLUMOTION	●	NI	71B9790
●	With spring		NI	Nickel plated
○	Unsprung			

	Boss		Screw-on	
	Hinge	Spring	Colour	Part no.
	CLIP top BLUMOTION	●	NI	71B9750
	CLIP top	○	NI	70T9750.TL

	CRISTALLO mounting plate	
	Front material	Colour
	Glass/mirror	Matt-nickel plated

Accessories

	Hinge arm cover cap	
	Print/Stamp	Logo
	Plain	–
	Stamped	Blum

Accessories



☐ Hinge boss cover cap

Hinge	Part no.
CLIP top BLUMOTION	70T3504
CLIP top	70T1504



☐ Chipboard screw

Ø (mm)	Length (mm)	Part no.
3.5	15	609.1500
3.5	17	609.1700

Disclaimer of liability

If the Blum fittings are installed according to instructions and on suitable glass and mirror fronts, they will meet the requirements concerning the stability of the connection.

This is monitored through internal and external testing.

As the adhesive and/or the adhesive process are beyond our control, Blum cannot accept liability for claims arising from the failure or malfunction of this/these process/es.

It is recommended that the adhesive be applied by an experienced glass manufacturer.

Note

Only recommended for wall cabinets due to lower load bearing limits!

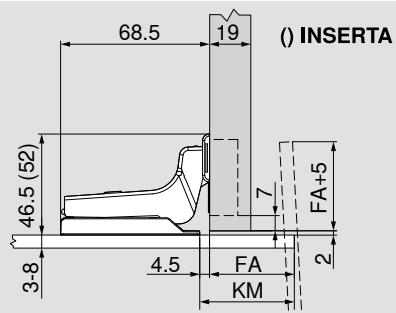
CLIP top BLUMOTION CRISTALLO



Planning Bathroom mirror cabinets with fronts that protrude all the way around

Hinge dimensions and gap calculation based on factory setting (mounting plate 175M4C20N)

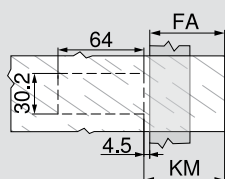
Hinge with double cranked arm



FA Front overlay

KM Mounting plate distance

Distance K



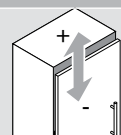
FA Front overlay

FA = max. 70 mm

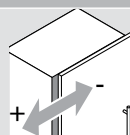
KM Mounting plate distance

KM = FA + 4.5 mm

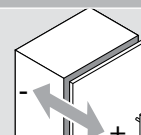
Adjustment



Max. ± 2.0 mm



+2.0 mm
-3.0 mm

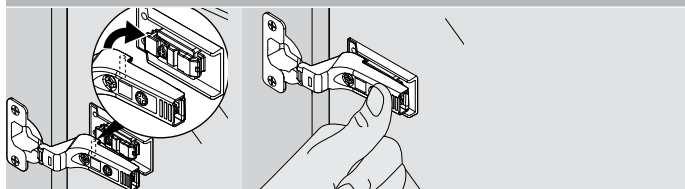


± 2.0 mm

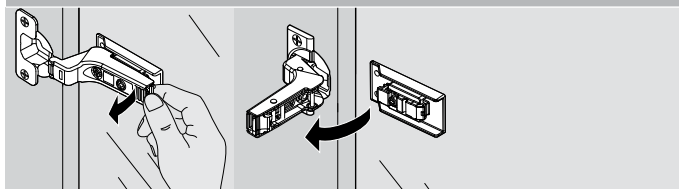
Note

Please contact your glass or front supplier concerning the selection and use of the adhesive in attaching the mounting/adhesive plate to glass and mirrors.

Assembly



Removal



CLIP top BLUMOTION CRISTALLO



Order specification Angled application



- Hinge for glass and mirror doors
- Adhesion plate is glued on to the front (no glass drilling necessary)
- Tool-free hinge to adhesion plate assembly
- **CLIP top BLUMOTION** with integrated **BLUMOTION** (and deactivation option)
- **CLIP top** with or without closing mechanism (spring)
- 110° opening angle
- 3-dimensional front adjustment
- Tool-free front to cabinet assembly and removal

Page instructions					
WA	Angle	WA	Angle		
	-5°		5°	10°	15°
	Nº 106 8		Nº 103 8	Nº 104 9	Nº 105 9
	Nº 107 8		Nº 100 9	Nº 101 9	Nº 102 9
WA angled application					

Boss		CRISTALLO 110°	
Hinge	Spring	Colour	Part no.
CLIP top BLUMOTION	●	NI	71B4500C
CLIP top	●	NI	71T4500C
CLIP top	○	NI	70T4500CTL
●	With spring	NI	Nickel plated
○	Unsprung		

Accessories			
Hinge arm cover cap			
Print/Stamp	Logo	Colour	Part no.
Plain	—	NI ONS	70.4503
Stamped	Blum	NI	70.4503.BP

CRISTALLO adhesion plate		
Glue-on		
Front material	Colour	Part no.
Glass/mirror	Matt-nickel plated	70T4568C
Mirror	Special nickel plated	70T4568C

Disclaimer of liability

If the Blum fittings are installed according to instructions and on suitable glass and mirror fronts, they will meet the requirements concerning the stability of the connection.

This is monitored through internal and external testing.

As the adhesive and/or the adhesive process are beyond our control, Blum cannot accept liability for claims arising from the failure or malfunction of this/these process/es.

It is recommended that the adhesive be applied by an experienced glass manufacturer.

Note

These dimensions are based on a factory setting of 19mm side panels. The overlay application changes in cases of variance. A trial application is recommended. The fixing position of the mounting plate can be different from the standard fixing position.

Nº 106 -5°		
Description	Spacing (mm)	Part no.
Mounting plate	0	173H7100
Angled spacer	-5° 1 x	171A5500

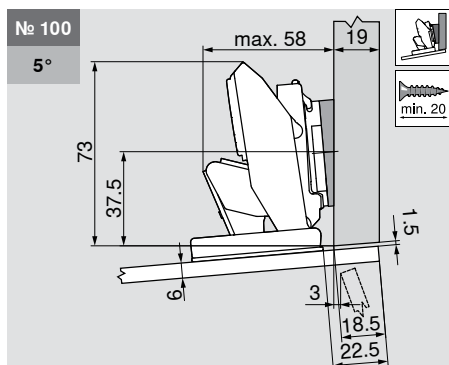
Nº 107 -5°		
Description	Spacing (mm)	Part no.
Mounting plate	0	173H7100
Angled spacer	-5° 1 x	171A5500

Nº 103 5°		
Description	Spacing (mm)	Part no.
Mounting plate	0	173H7100
Angled spacer	+5° 1 x	171A5010

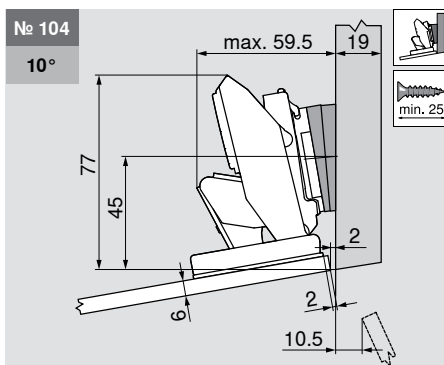
CLIP top BLUMOTION CRISTALLO



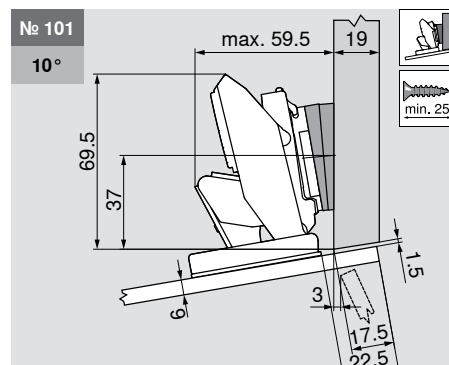
Planning Angled application



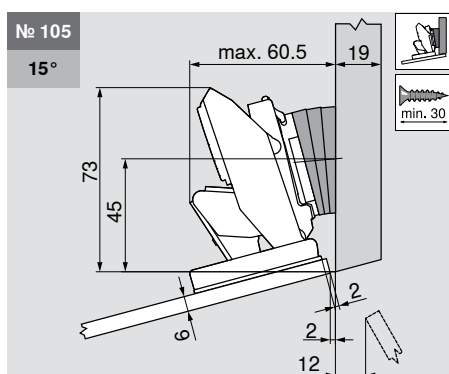
Description	Spacing (mm)	Part no.
Mounting plate	0	173H7100
Angled spacer	+5° 1 x	171A5010



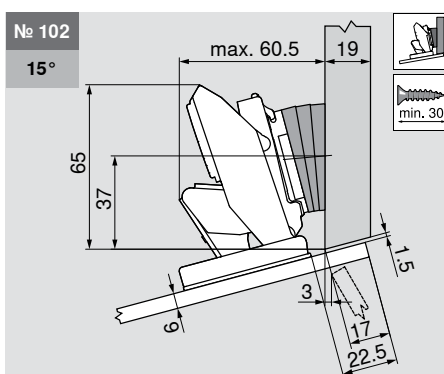
Description	Spacing (mm)	Part no.
Mounting plate	0	173H7100
Angled spacer	+5° 2 x	171A5010



Description	Spacing (mm)	Part no.
Mounting plate	0	173H7100
Angled spacer	+5° 2 x	171A5010



Description	Spacing (mm)	Part no.
Mounting plate	0	173H7100
Angled spacer	+5° 3 x	171A5010

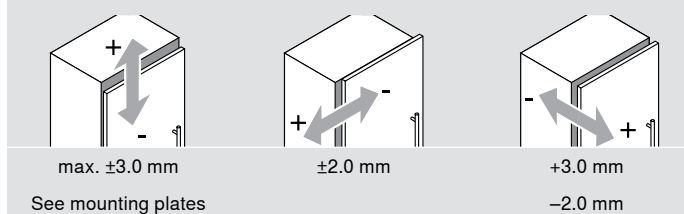


Description	Spacing (mm)	Part no.
Mounting plate	0	173H7100
Angled spacer	+5° 3 x	171A5010

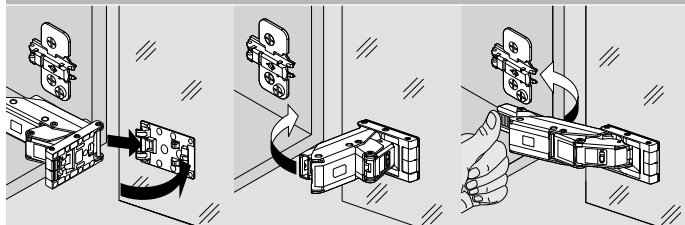
Note

Please contact your glass or front supplier concerning the selection and use of the adhesive in attaching the mounting/adhesive plate to glass and mirrors.

Adjustment



Assembly



Removal

