

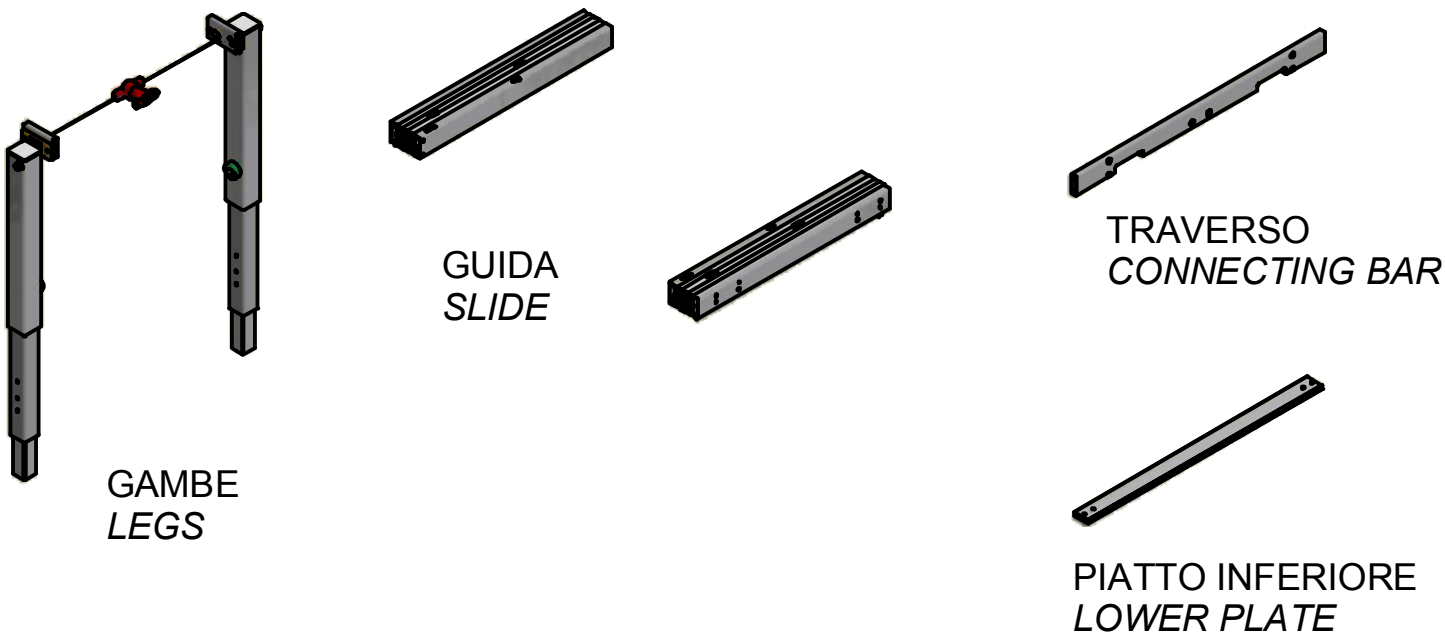
PARTY

ISTRUZIONI DI MONTAGGIO ASSEMBLY INSTRUCTIONS

MODELLI:
MODELS:

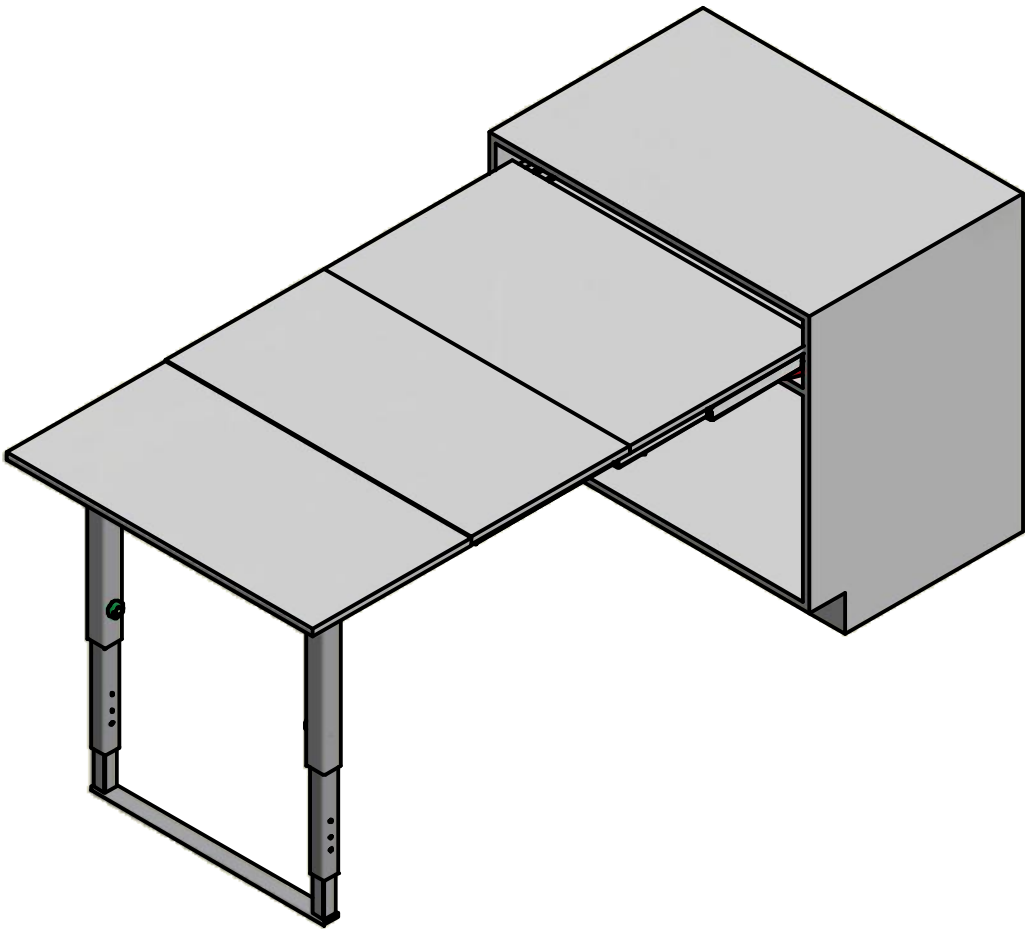
411/78.1500.22 Party 600
411/78.1510.22 Party 900
411/78.1520.22 Party 1200

CONTENUTO DELLA CONFEZIONE INCLUDED IN THE PACKAGING



SACCHETTO ACCESSORI - ACCESSORIES

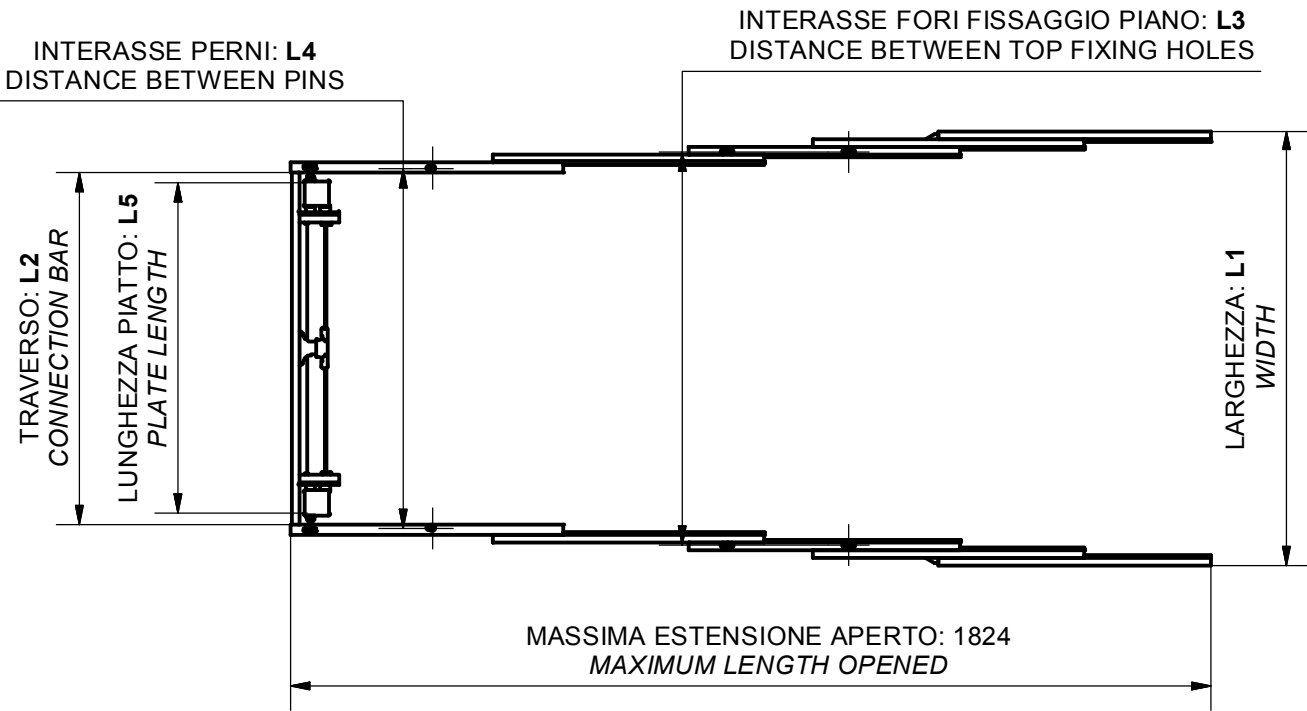
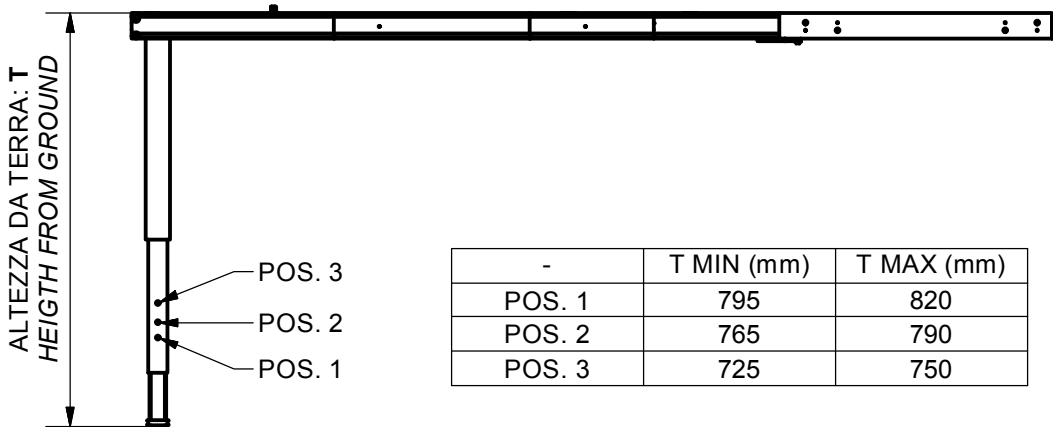
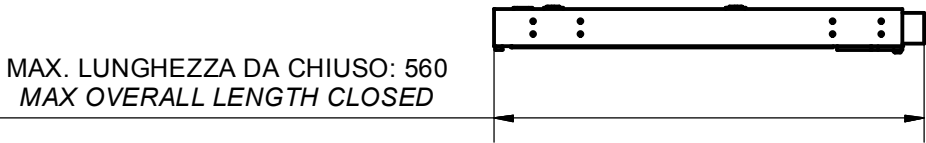
- | | | |
|--|----|---|
| | A. | Chiave esa. n.5 - n.5 Allen key |
| | B. | Chiave esa. n.4 - n.4 Allen key |
| | C. | Chiave esa. n.3 - n.3 Allen key |
| | D. | Distanziale per spalla - Side spacer (x 12) |
| | E. | Bussola in ottone M6 12x8 mm - M6 12x8 mm brass bush (x 12) |
| | F. | Perno blocco piano - Pin for blocking plane (x 2) |
| | G. | Vite TCBCE M5x10 ISO 7380 - M5x10 ISO 7380 screw (x 8) |
| | H. | Vite TCCE M6x12 - Socked head cap screw M6x12 (x 12) |
| | I. | Vite M6x25 trilobata - M6x25 self threading screw (x 4) |
| | J. | Vite TPS M6x16 - Socked head tapered cap screw M6x16 (x 4) |
| | K. | Vite TPS M6x20 - Socked head tapered cap screw M6x20 (x 2) |
| | L. | Vite TCCE M6x60 - Socked head cap screw M6x60 (x 4) |



DIMENSIONI DI MASSIMA

GENERAL DIMENSIONS

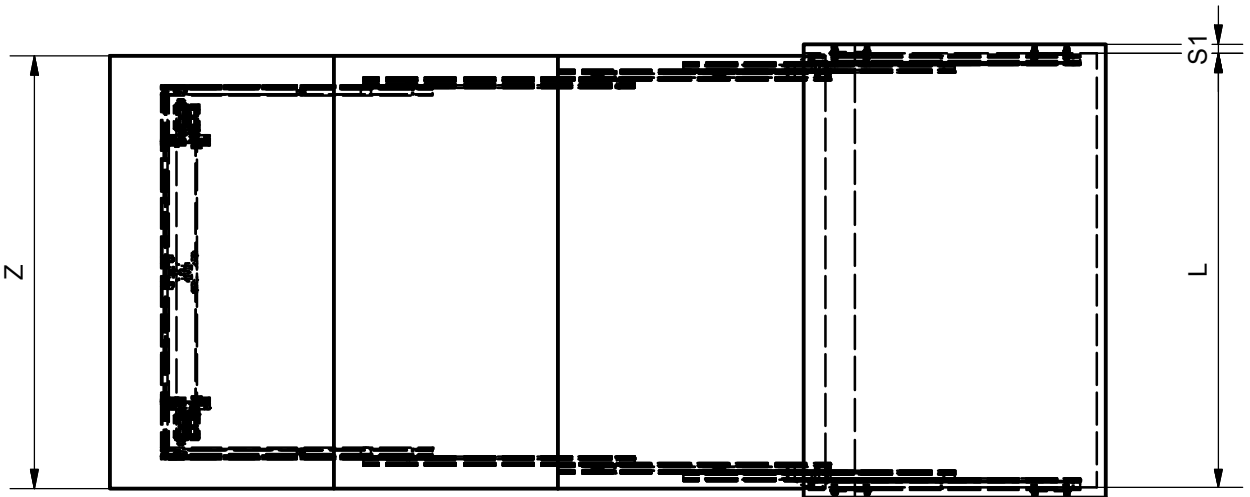
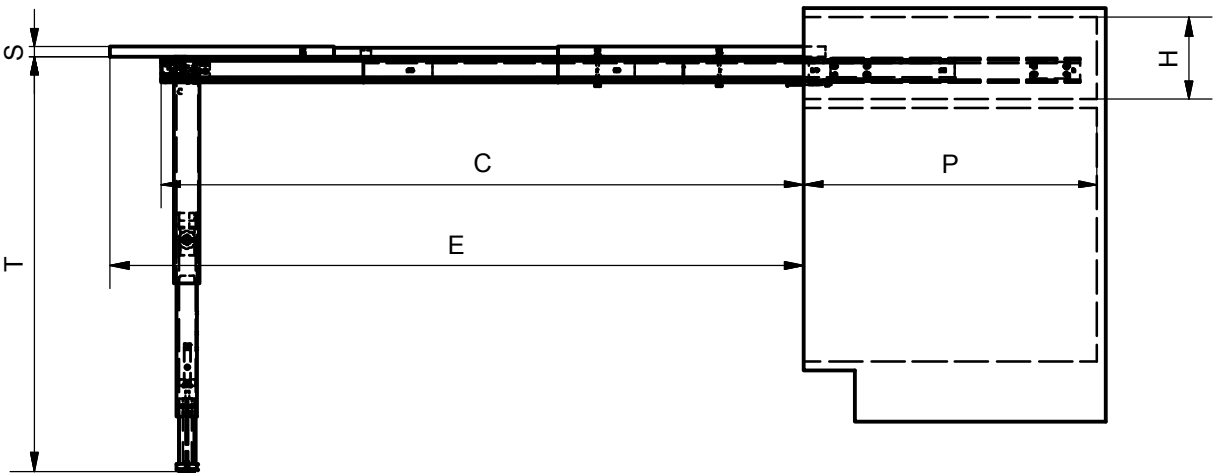
CODICE - CODE	MODULO - MODULE	L1 - MIN/MAX (mm)	L2 (mm)	L3 (mm)	L4 (mm)	L5 (mm)
411/78.1500.22	600	562/568	398	480	414	354.6
411/78.1510.22	900	862/868	698	780	714	654.6
411/78.1520.22	1200	1162/1168	998	1080	1014	954.6



DIMENSIONI GENERALI MOBILE

GENERAL CABINET DIMENSIONS

DIMENSIONE - DIMENSION	SIMBOLO - SYMBOL	mm
ALTEZZA - HEIGHT	H	MIN: 150
PROFONDITA' - DEPTH	P	MIN: 560
LARGHEZZA - WIDTH	L	MIN: 562 MAX: 1168
SPESSORE SPALLA - SIDE THICKNESS	S1	16-19
SPESSORE PIANI - TOP THICKNESS	S	MIN: 16
LARGHEZZA PIANI - TOP WIDTH	Z	L-5
APERTURA PIANI - TOP OPENING	E	1380
APERTURA MECCANISMO - MECHANISM OPENING	C	1275
ALTEZZA DA TERRA - HEIGHT FROM GROUND	T	725-820



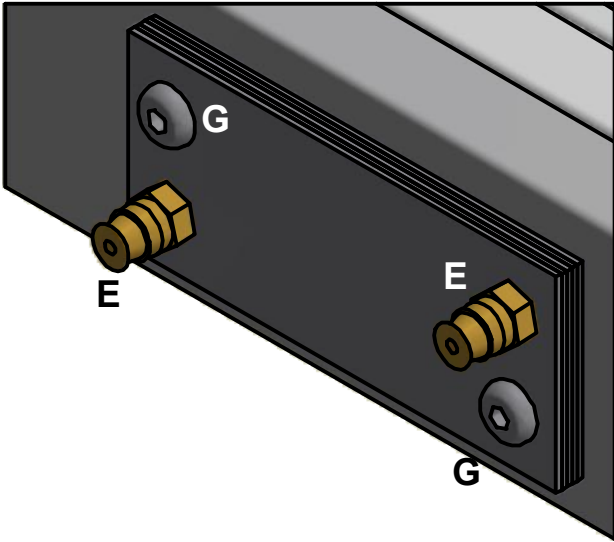
POSIZIONE FORI FISSAGGIO MECCANISMO

HOLES FOR MECHANISM POSITION

- A: Posizione fori diam. 8x13 per bussole M6
Position of diam. 8x13 holes for M6 bushes
- B: Posizione scarichi da Ø10x5 per testa viti fissaggio distanziali
Position of Ø10x5 holes for the heads of screws fixing the spacers

Per spalle di spessore < 20 mm usare i distanziali in ferro a corredo fissandoli sulle guide esterne.
For cabinet sides <20 mm use included steel spacers fixing them on the external slides

- Spalla da 20 mm - nessun distanziale
 - Spalla da 19 mm - 1 distanziale
 - Spalla da 18 mm - 2 distanziale
 - Spalla da 17 mm - 3 distanziale
 - Spalla da 16 mm - 4 distanziale
 - Spalla da 15 mm - 5 distanziale
- Side thickness 20 mm - no spacer*
Side thickness 19 mm - 1 spacer
Side thickness 18 mm - 2 spacers
Side thickness 17 mm - 3 spacers
Side thickness 16 mm - 4 spacers
Side thickness 15 mm - 5 spacers

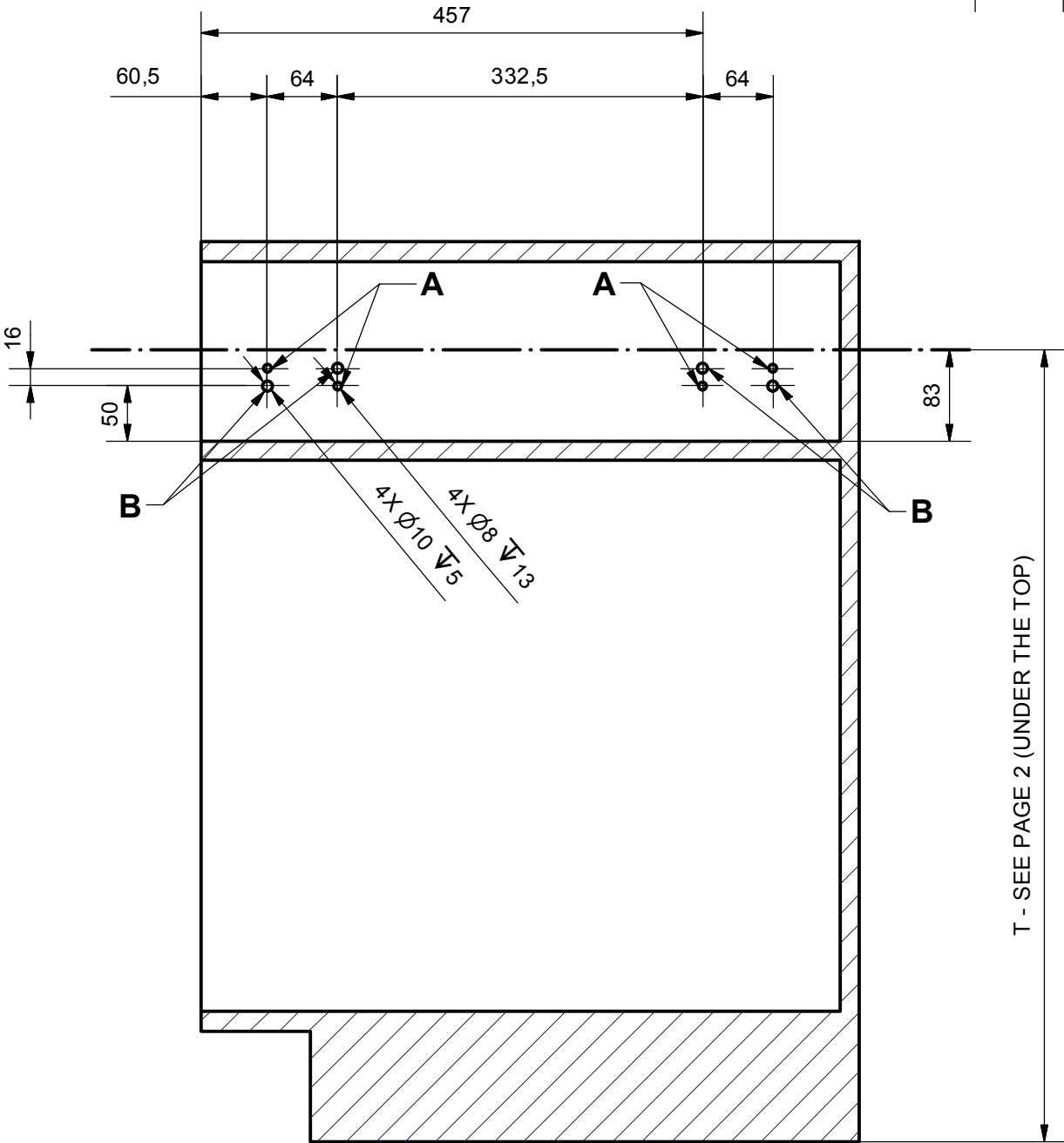
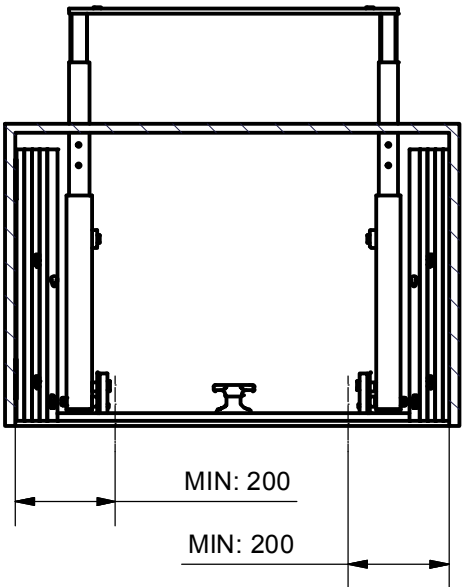


La quota indicata di 50 mm, lascia uno spazio tra lato inferiore guide e pianetto sottostante di circa 20 mm
The indicated 50 mm dimension is to allow a free space between the bottom of the slides and the plane of 20 mm

- A. Chiave esa. n.3 - n.3 Allen key
- D. Distanziale per spalla - Side spacer (x 12)
- E. Bussola in ottone M6 12x8 mm - M6 12x8 mm brass bush (x 8)
- G. Vite TCBCE M5x10 ISO 7380 - M5x10 ISO 7380 screw (x 8)

POSIZIONE DELLE CERNIERE PER FRONTALE CASSETTO

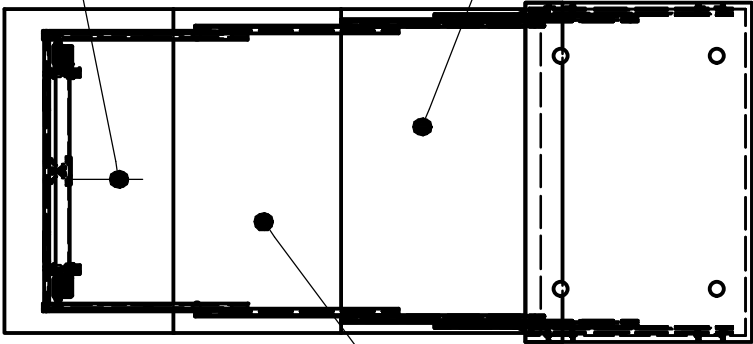
POSITION FOR THE HINGES THAT HOLD THE DRAWER FRONT



DIMENSIONI PIANETTI
PLANES DIMENSIONS

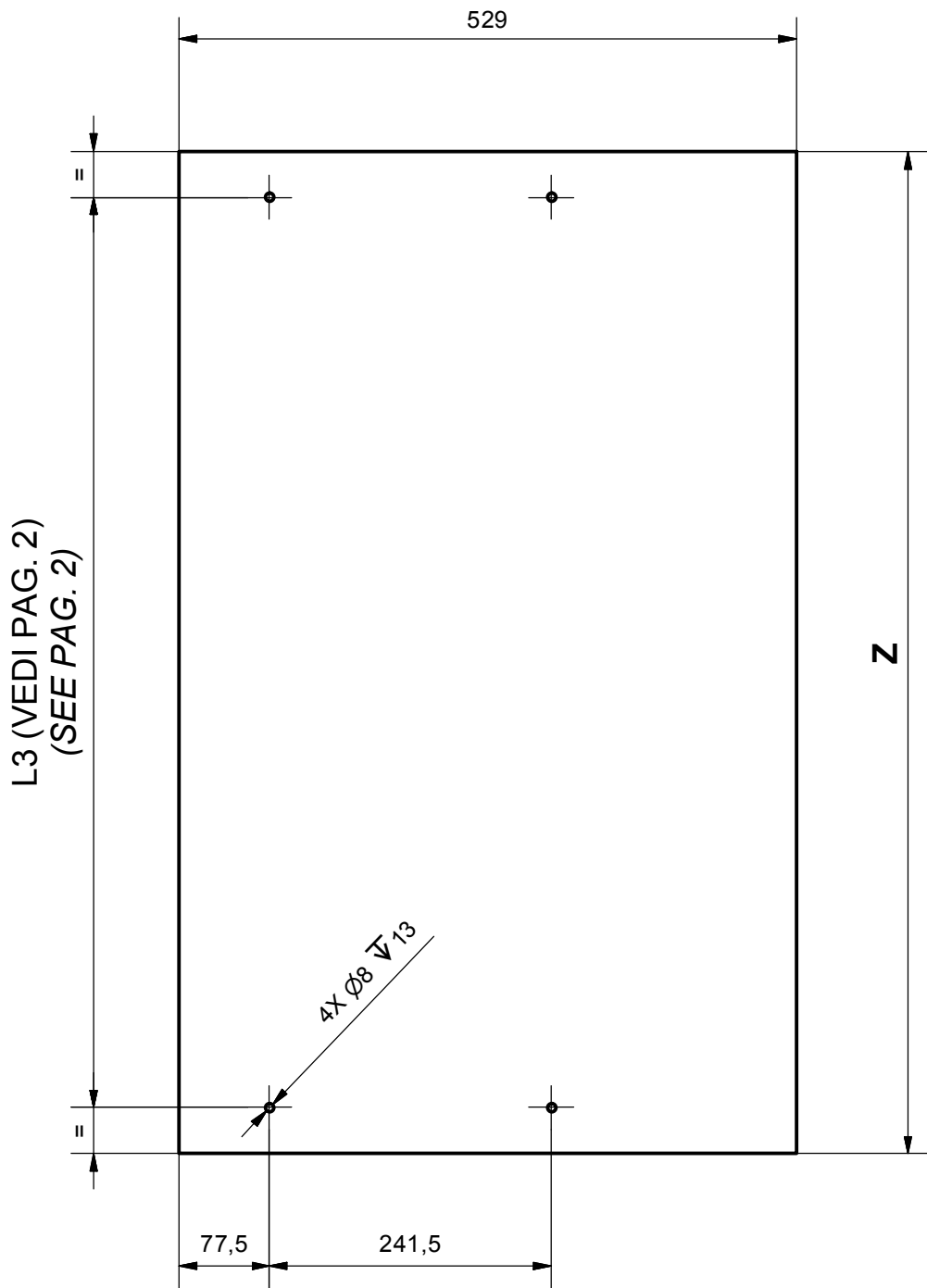
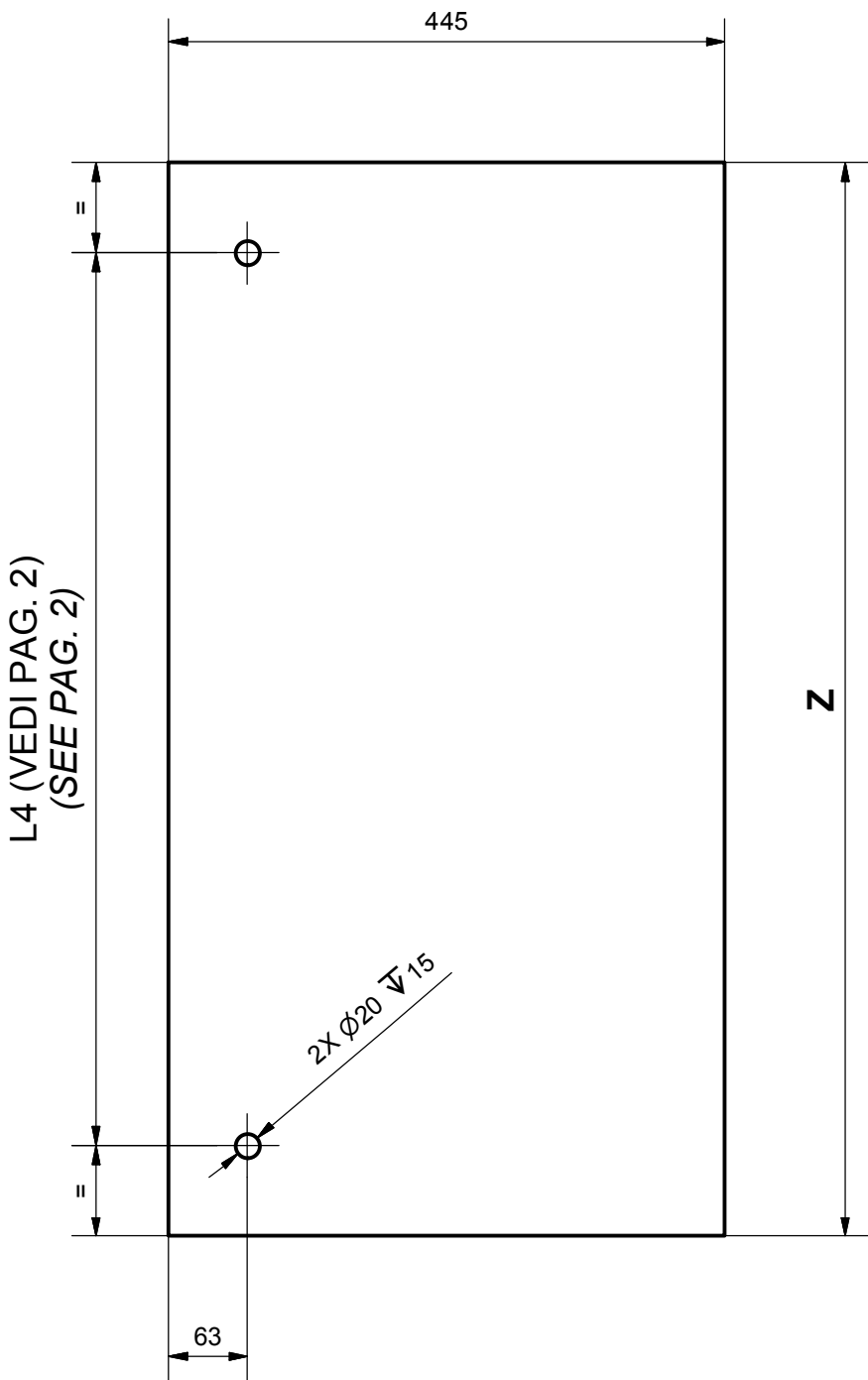
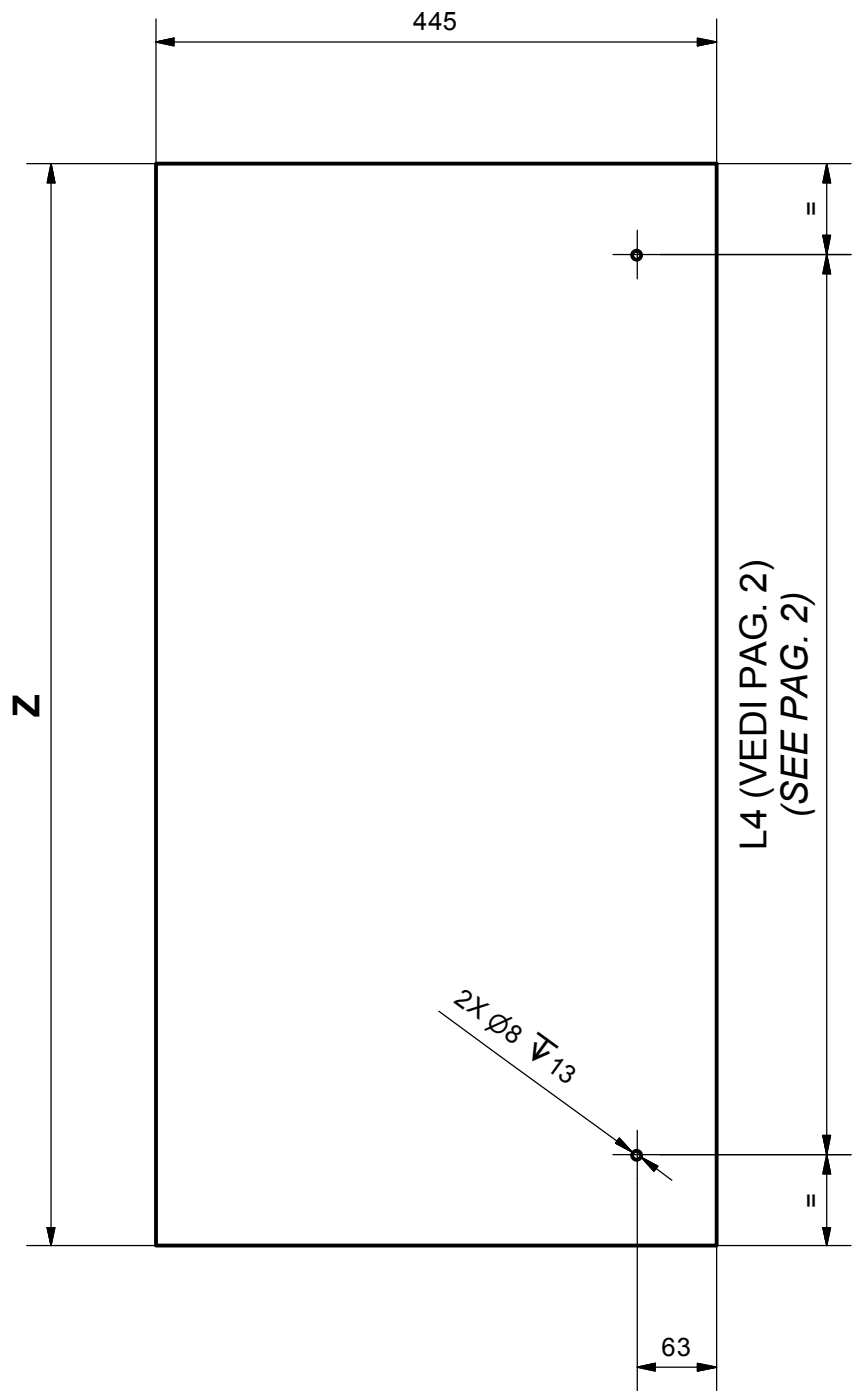
SECONDO PIANO RIBALTABILE
SECOND TILTING PLANE

PIANO FISSO
FIXED PLANE



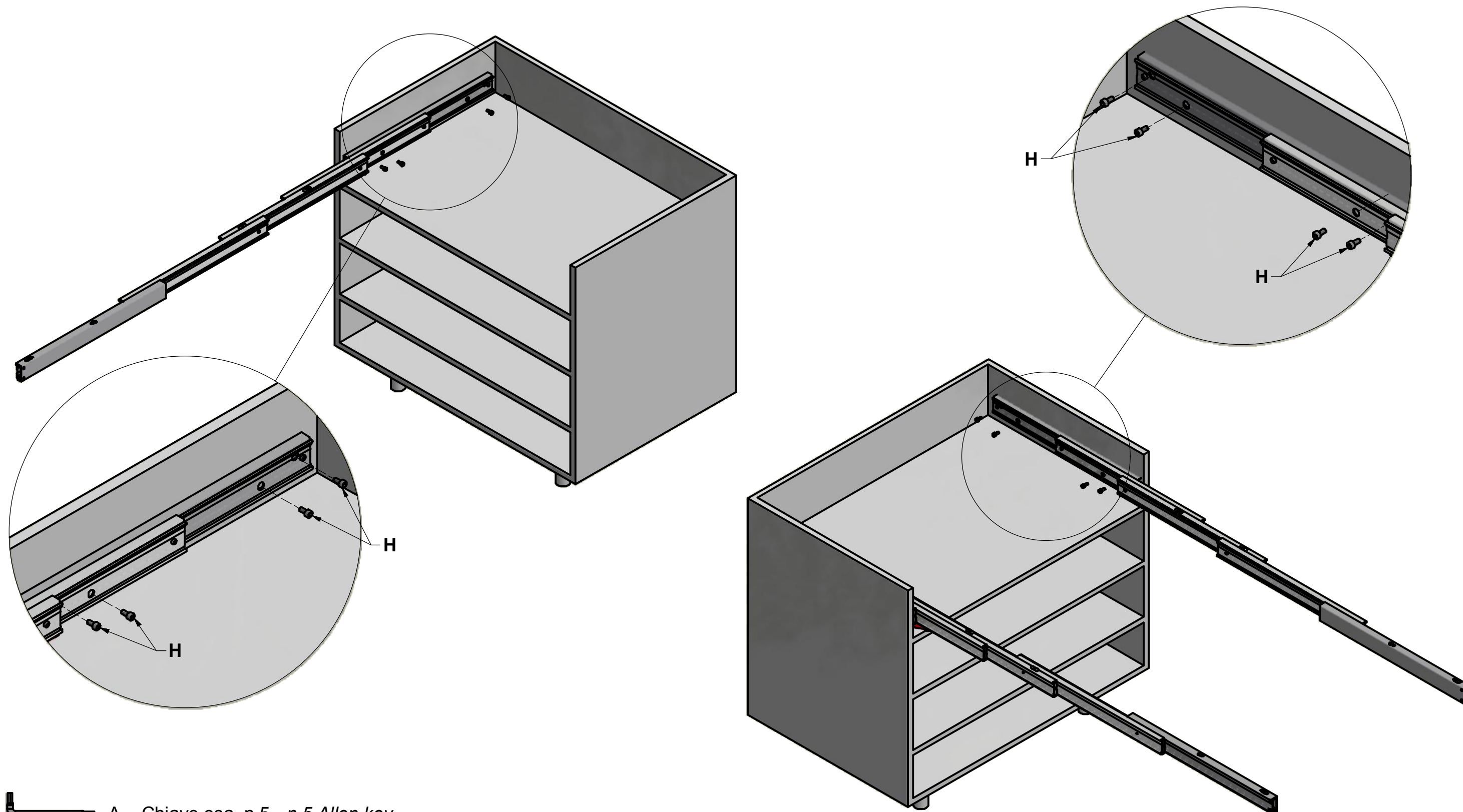
PRIMO PIANO RIBALTABILE
FIRST TILTING PLANE




VISTA DAL BASSO - BOTTOM VIEW



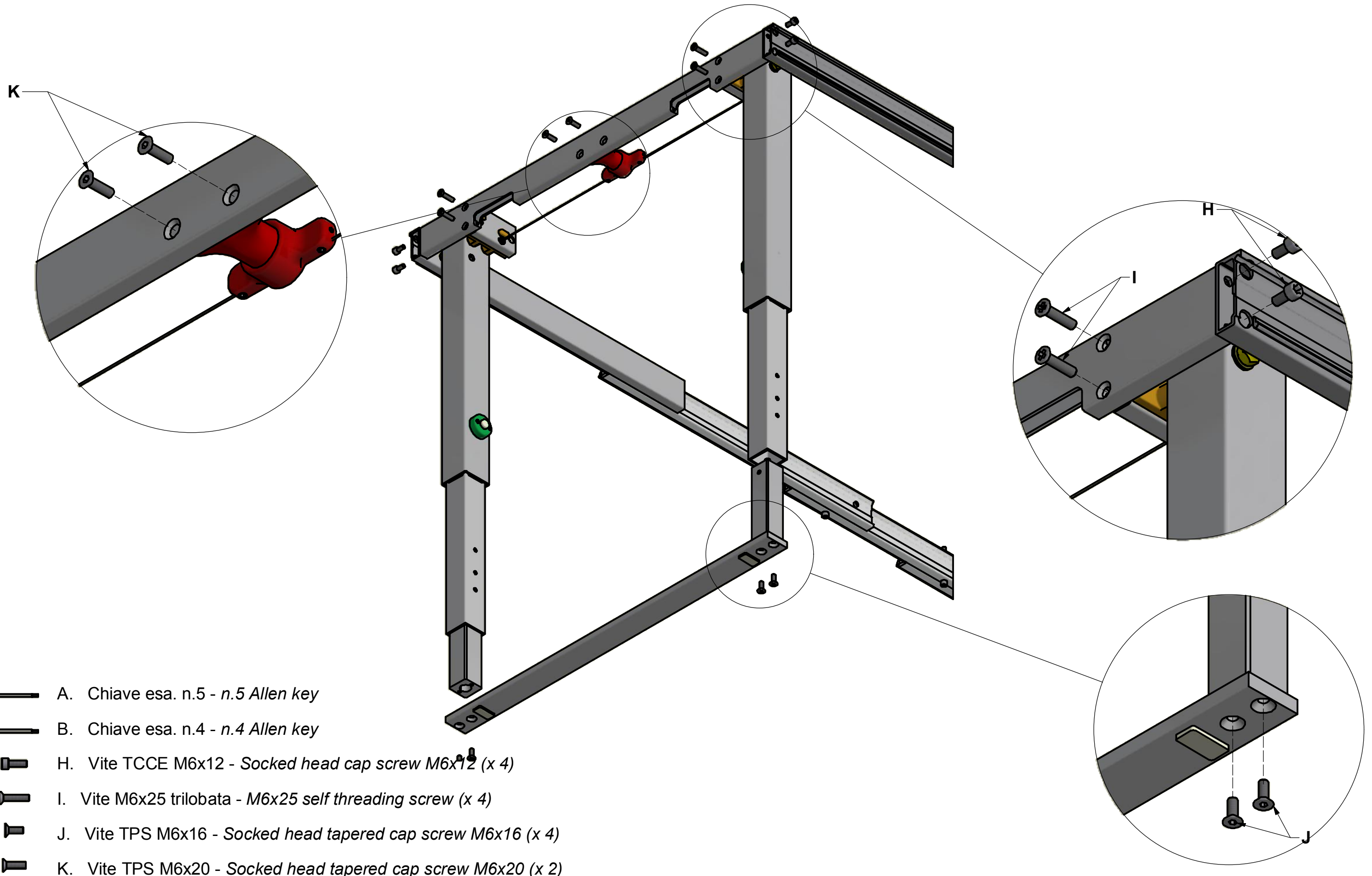
MONTAGGIO DEL MECCANISMO SUL MOBILE

MOUNTING OF THE MECHANISM ON THE CABINET



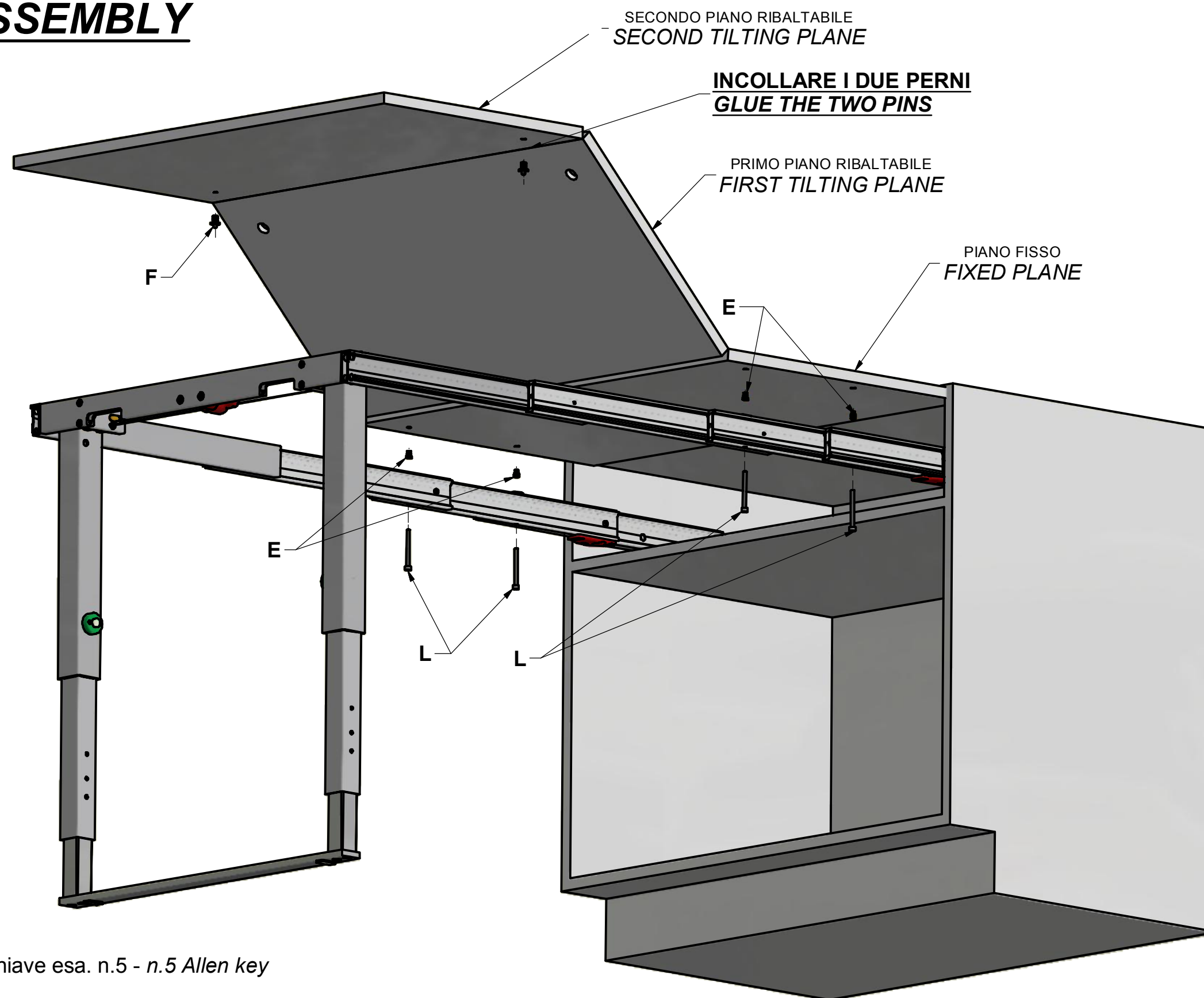
-  A. Chiave esa. n.5 - *n.5 Allen key*
-  B. Chiave esa. n.4 - *n.4 Allen key*
-  H. Vite TCCE M6x12 - *Socked head cap screw M6x12 (x 8)*

MONTAGGIO DI TRAVERSO, PIATTONE E GAMBE CONNECTION BAR, PLATE AND LEGS ASSEMBLY



PREPARAZIONE E FISSAGGIO DEI PIANI

PLANES ASSEMBLY



A. Chiave esa. n.5 - n.5 Allen key



E. Bussola in ottone M6 12x8 mm - M6 12x8 mm brass bush (x 4)



F. Perno blocco piano - Pin for blocking plane (x 2)

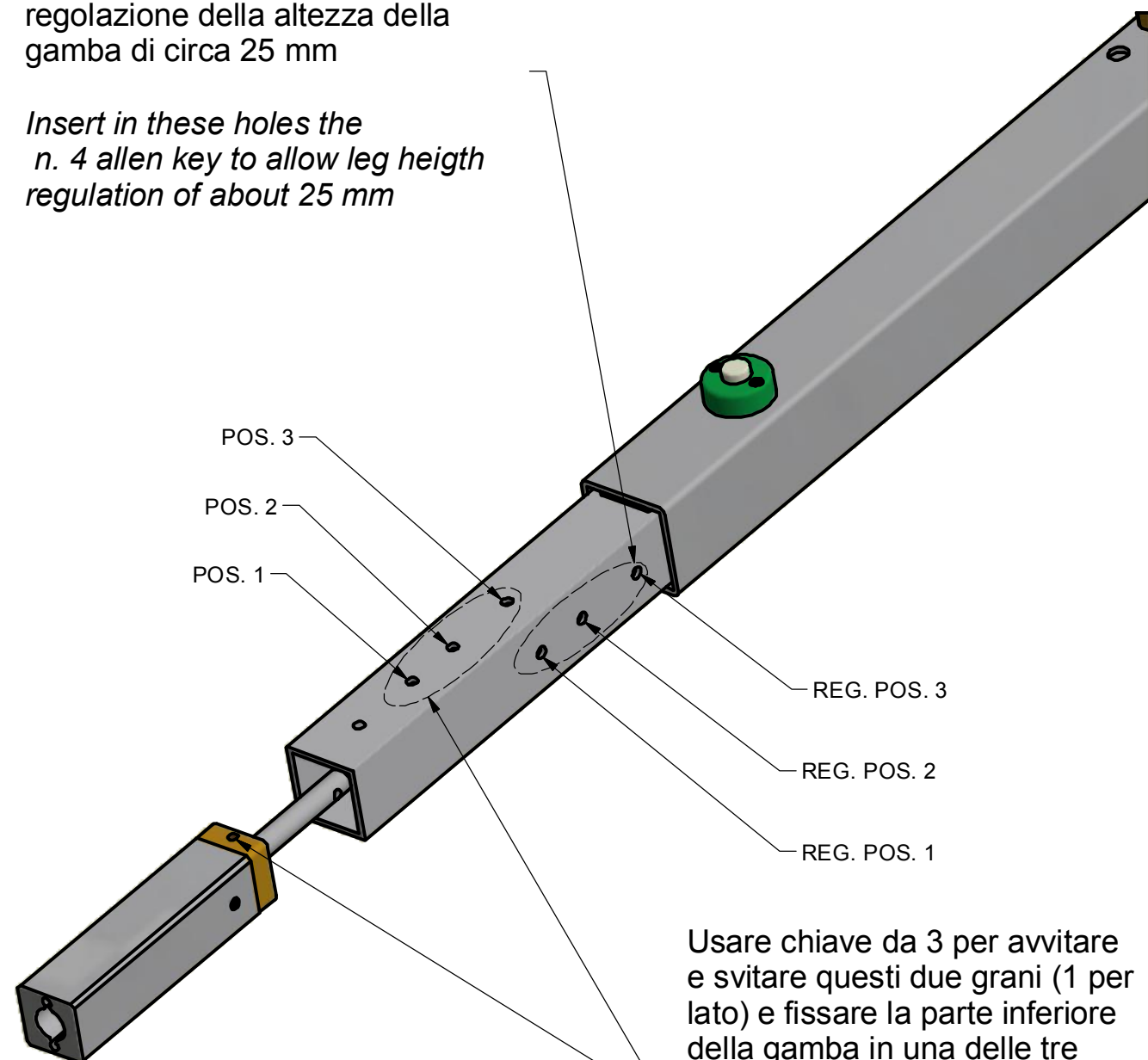


L. Vite TCCE M6x60 - Socked head cap screw M6x60 (x 4)

MONTAGGIO E REGOLAZIONE ALTEZZA GAMBE LEGS ASSEMBLY AND HEIGHT REGULATION

Inserire in questi fori la chiave da 4 per ruotare grano che permette regolazione della altezza della gamba di circa 25 mm

Insert in these holes the n. 4 allen key to allow leg height regulation of about 25 mm



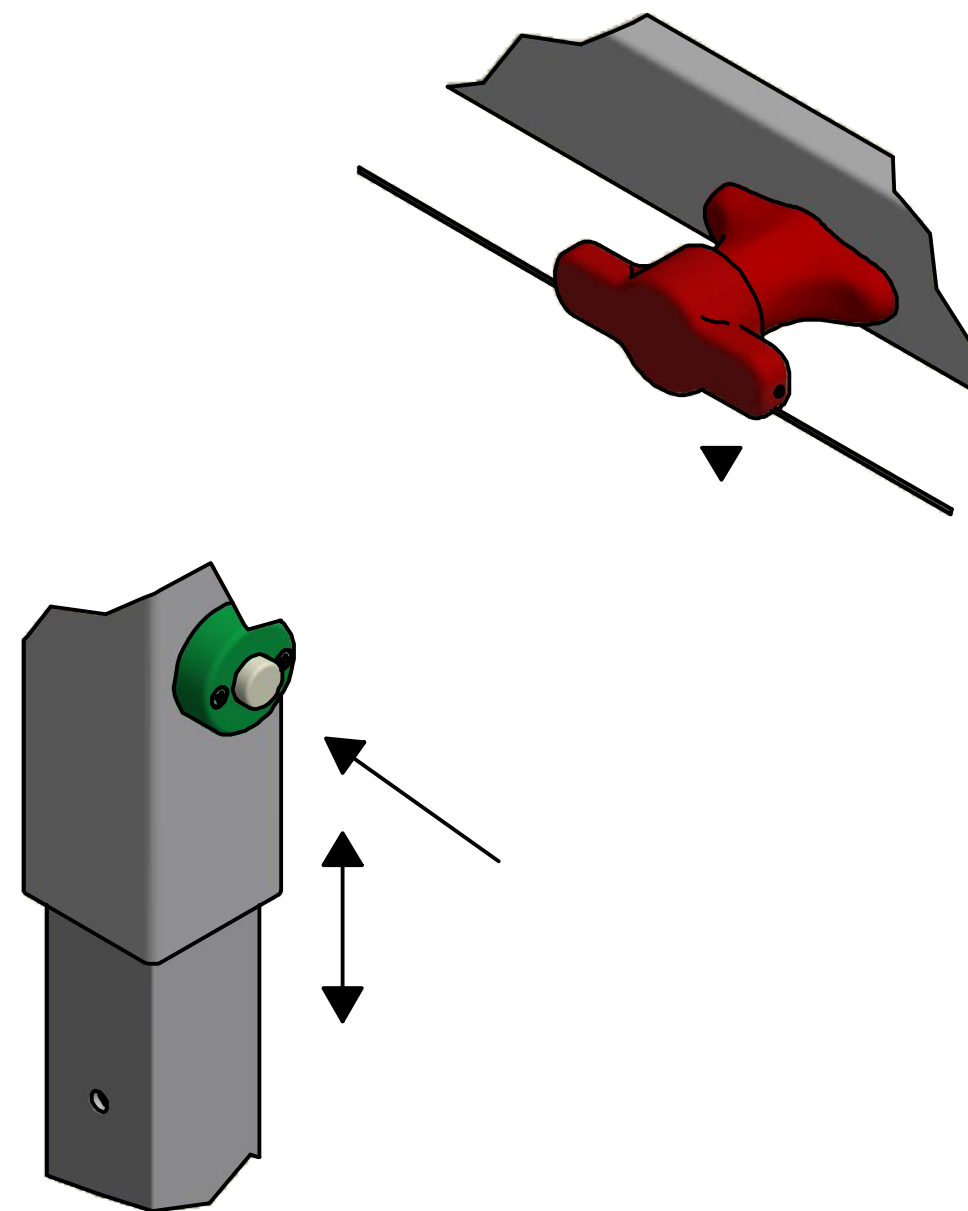
Usare chiave da 3 per avvitare e svitare questi due grani (1 per lato) e fissare la parte inferiore della gamba in una delle tre posizioni disponibili.

Use the n. 3 allen key to screw and unscrew this grain and positioning the lower part of the leg in one of the three allowable positions

COME GIRARE ED ESTENDERE LA GAMBA HOW TO TURN AND EXTEND THE LEG

A - Per ruotare le gambe, girare la maniglia tirando le due funi collegate alle gambe
To turn the legs, rotate the handle pulling the two ropes joined to the legs.

B - Per far rientrare la parte inferiore delle gambe spingere i pulsanti indicati
To close the inferior part of the legs, push the indicate buttons.

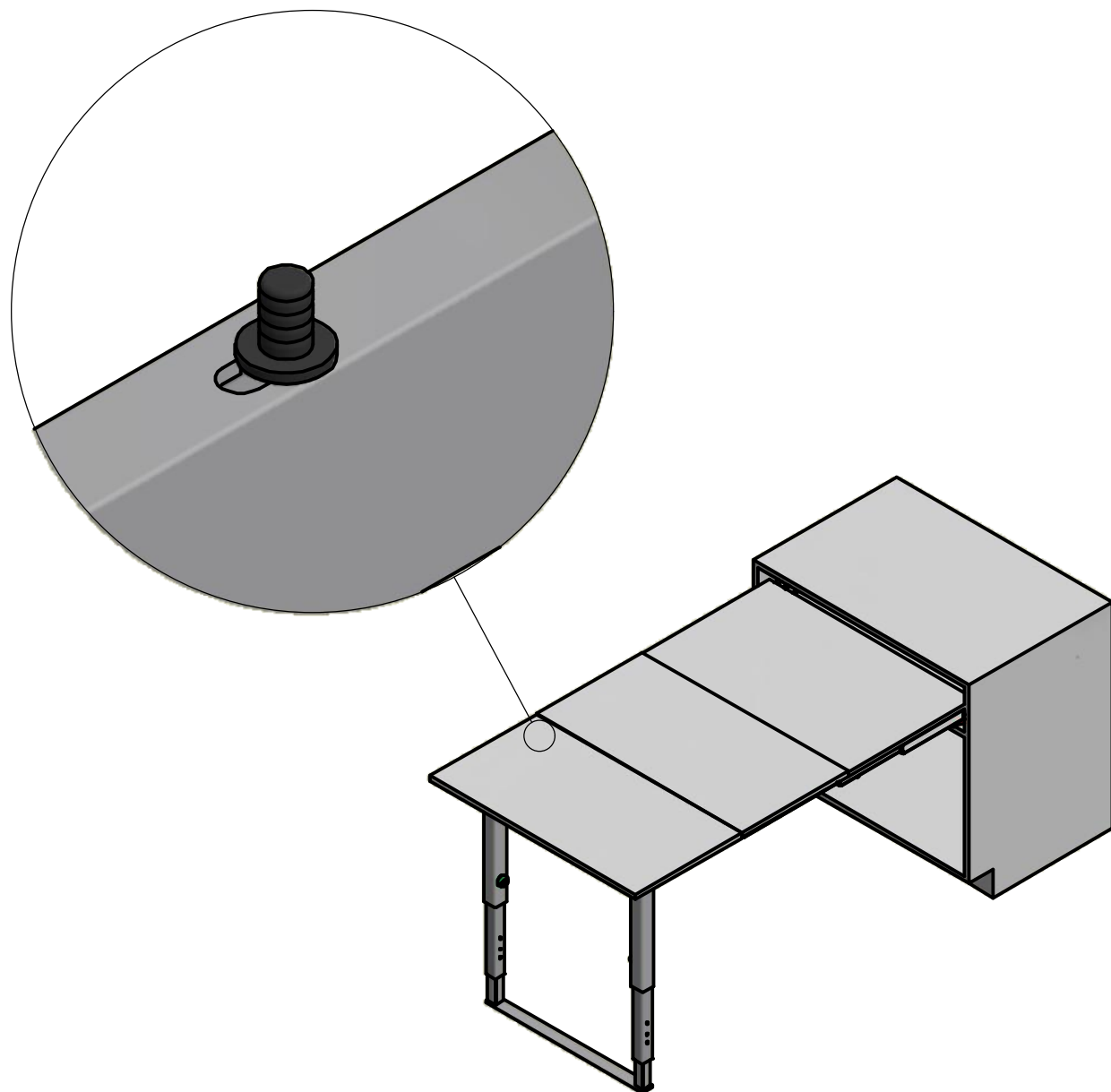


COME BLOCCARE / SBLOCCARE IL MECCANISMO

HOW TO BLOCK / UNBLOCK THE MECHANISM

Per bloccare l'ultimo pianetto spingere le gambe verso l'interno dopo averlo aperto in modo che il perno di blocco entri nella sua sede

To block the tilting plane, push the leg towards the cabinet after opening it so that the blocking pin enters in his slot

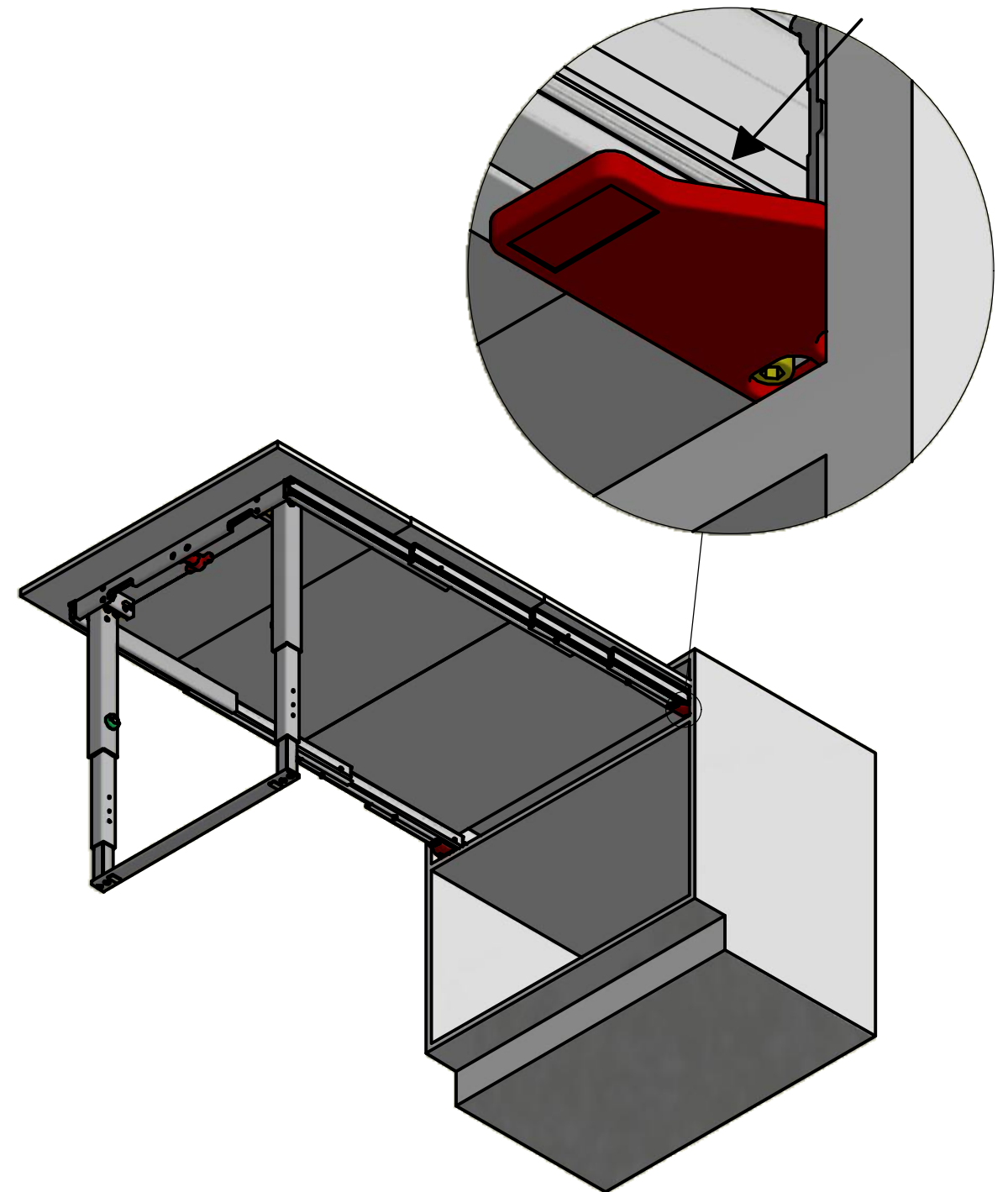


Per sbloccare l'ultimo pianetto spingere le gambe verso l'esterno in modo che il perno di blocco esca dalla sua sede

To unblock the tilting plane, push the leg outwards the cabinet so that the blocking pin out of its slot

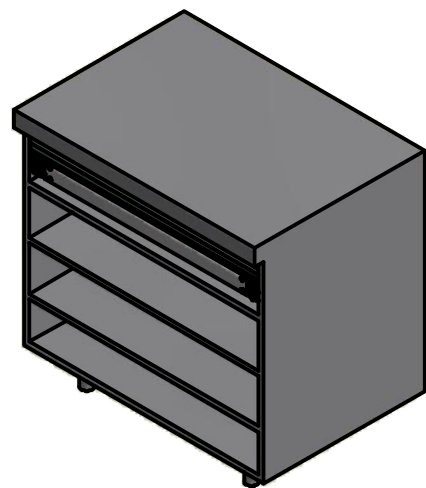
Per chiudere il meccanismo spingere le due leve rosse in plastica verso l'interno

To close the mechanism push toward the inside the two red plastic parts

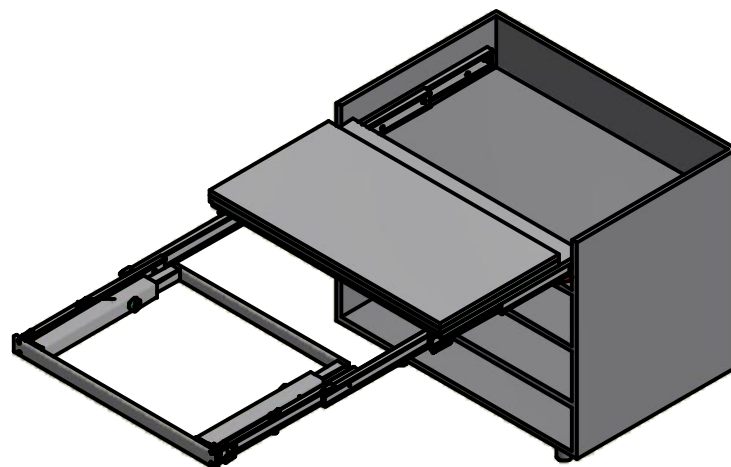


SEQUENZA DI FUNZIONAMENTO

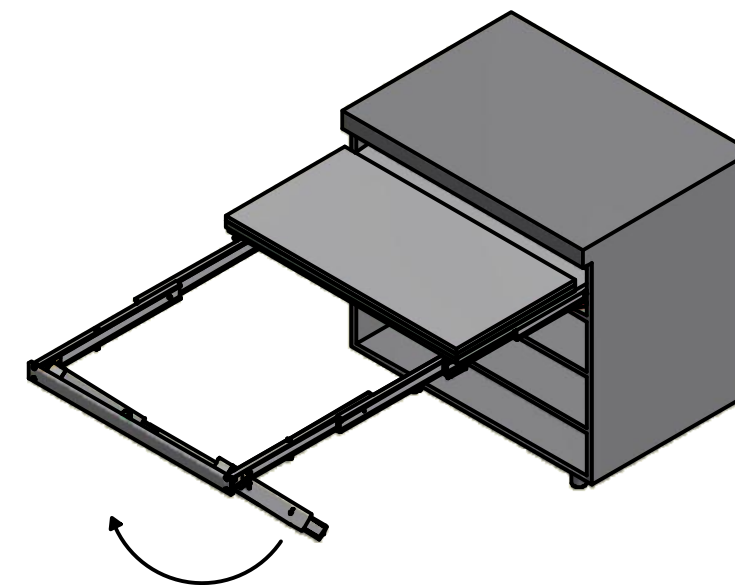
FUNCTIONING SEQUENCE



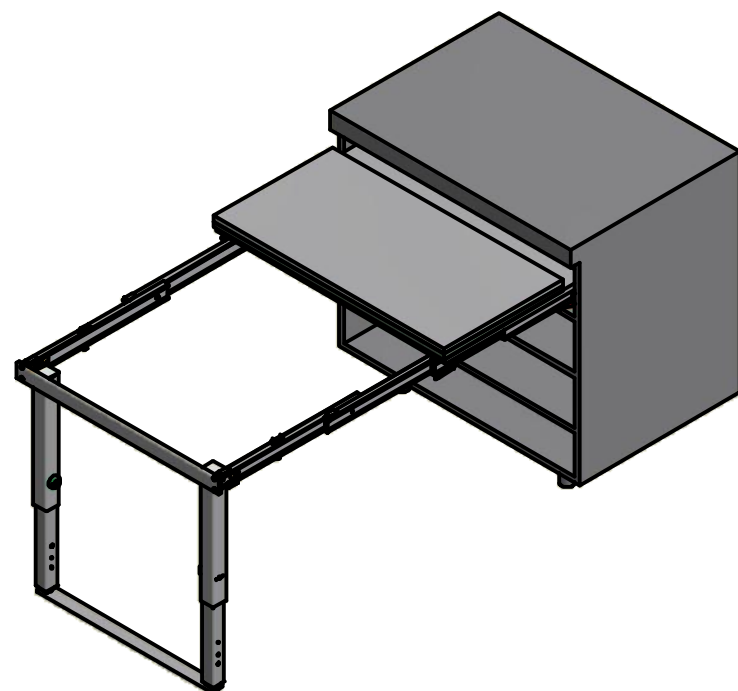
CHIUSO
CLOSED



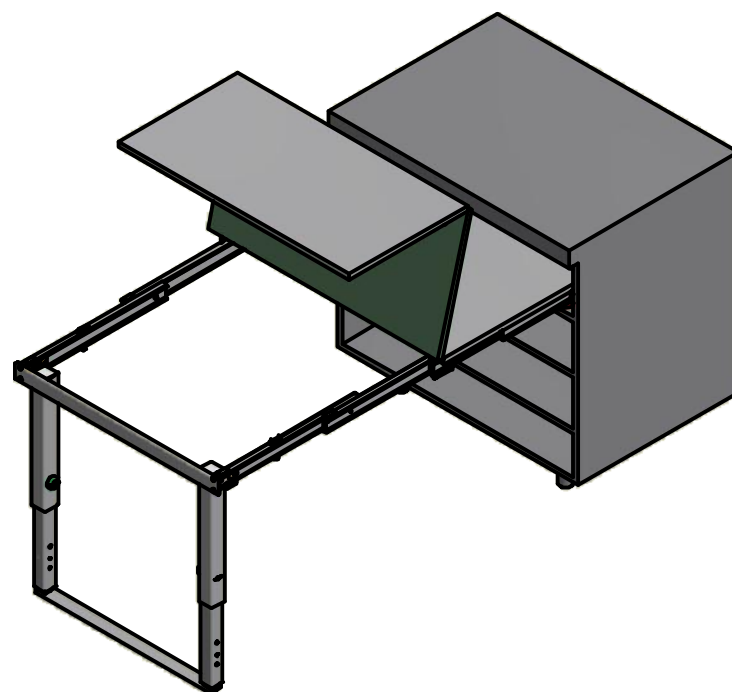
APERTURA DELLE GUIDE
SLIDES OPENING



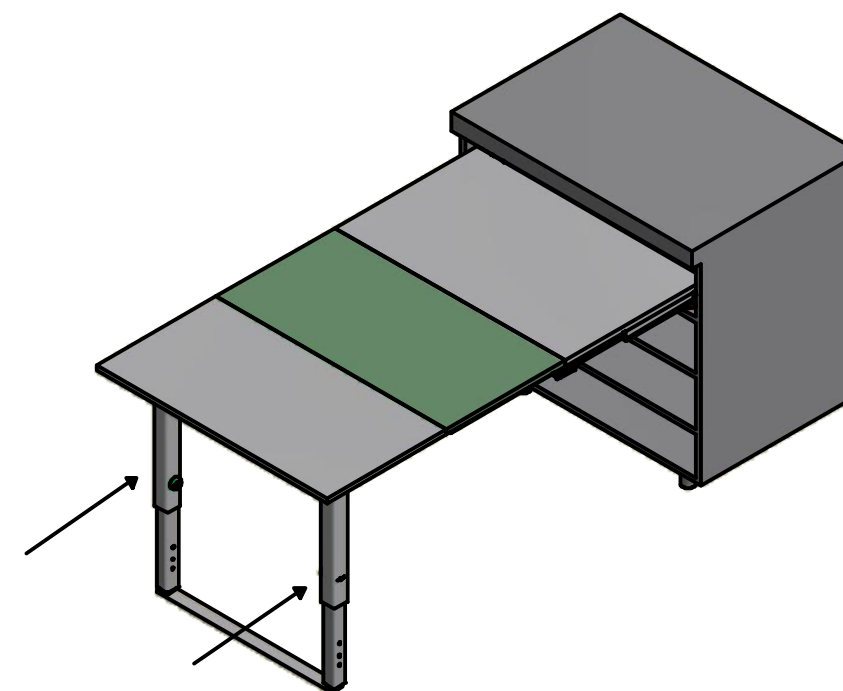
SBLOCCO E ROTAZIONE DELLA GAMBA
LEG RELEASE AND ROTATION



ESTENSIONE E BLOCCO DELLA GAMBA
LEG EXTENTION AND LOCK



APERTURA DEI PIANI
PLANES OPENING



APERTO, SPINGERE LE GAMBE VERSO L'INTERNO
OPENED, PUSH THE LEG TOWARDS THE CABINET