

GHOST PARETE

ISTRUZIONI DI MONTAGGIO ASSEMBLY INSTRUCTIONS

MODELLI
MODELS:

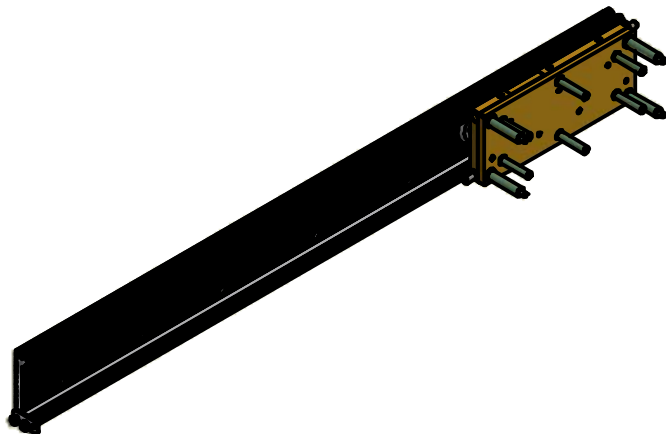
- 411/78.2000.22 - GHOST PARETE 880 / *GHOST WALL 880*
411/78.2001.22 - GHOST PARETE 980 / *GHOST WALL 980*
411/78.2002.22 - GHOST PARETE 1080 / *GHOST WALL 1080*

CONTENUTO DELLA CONFEZIONE INCLUDED IN THE PACKAGING

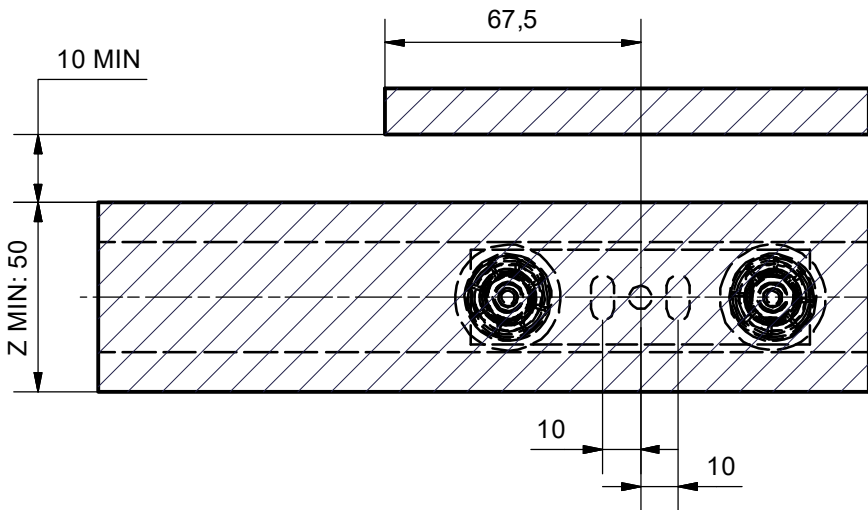
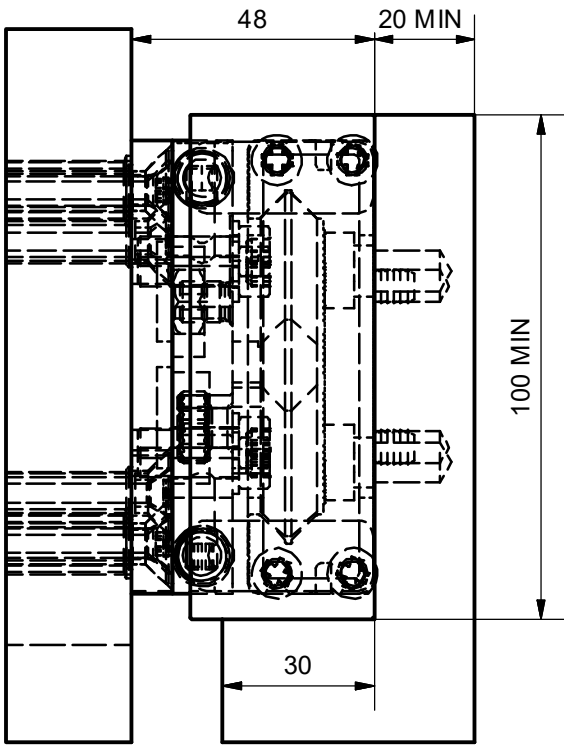
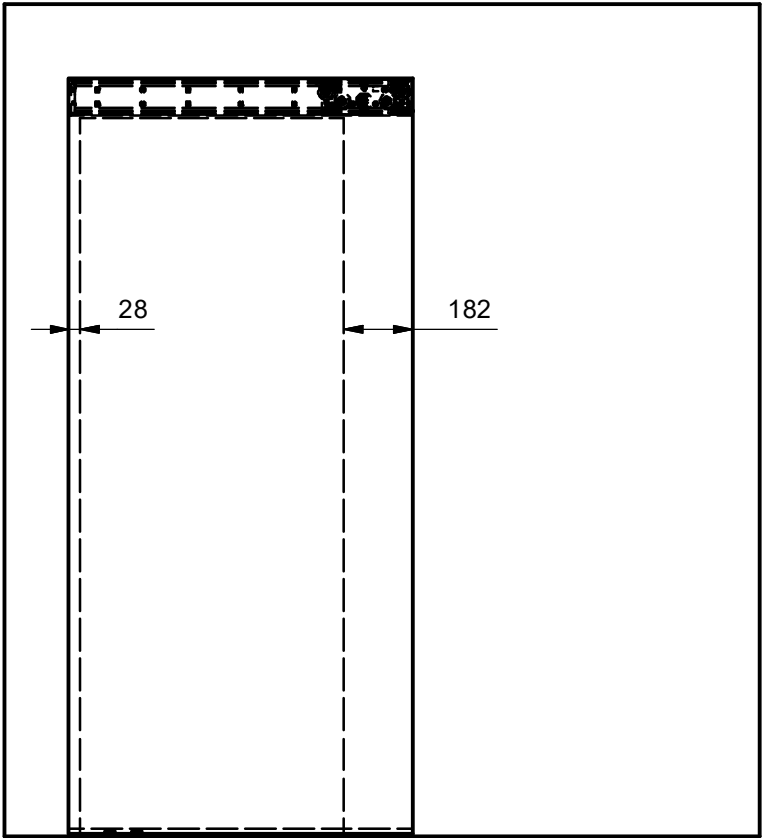
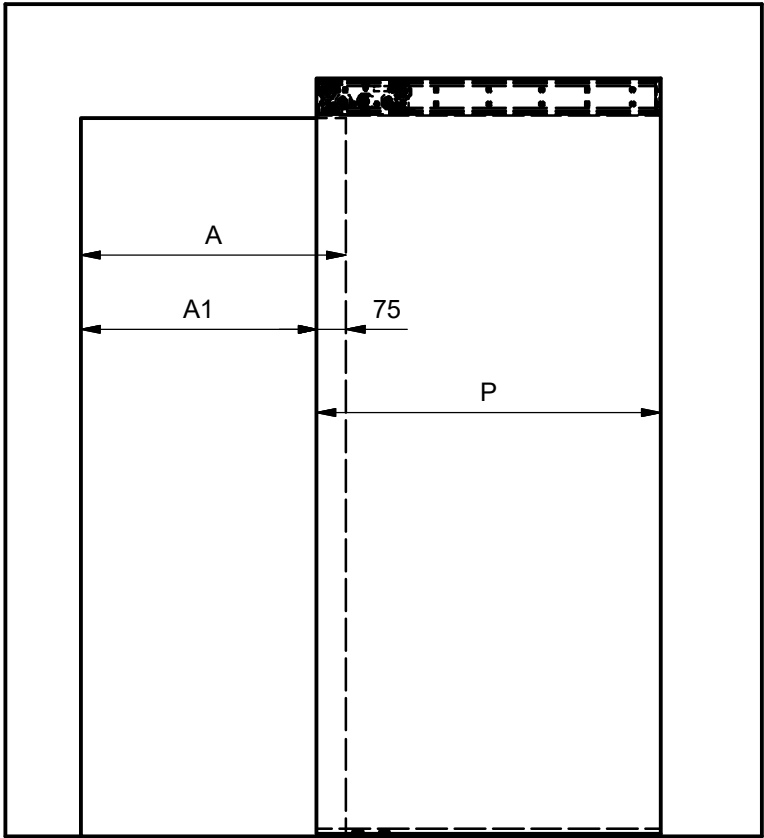
- GUIDA / SLIDE
- PIASTRE / PLATES

SACCHETTO ACCESSORI - ACCESSORIES

- A. Piatto guida porta - *Guide plate (x 1)*
- B. Piastra ghost muro - *Wall plate (x 1)*
- C. Fine corsa - *Limit switch (x 2)*
- D. Blumotion - *Blumotion (x 2)*
- E. Tassello M6x45 Ø10 - *Dowel M6x45 Ø10 (x 4)*
- F. Tassello Ø8 + Vite TPS M6 - *Dowel Ø10 + M6 screw (x 6)*
- G. Rondella - *Washer (x 7)*
- H. Rondella conica - *Conical washer (x 6)*
- I. Vite TCCE M6x20 - *M6x20 SHCS screws (x 7)*
- J. Vite TPS M6x60 CE - *M6x60 FHCS Screw (x 4)*
- K. Vite TC M5x16 - *M5x16 BHCS screw (x 4)*
- L. Tappi - *Caps (x 2)*

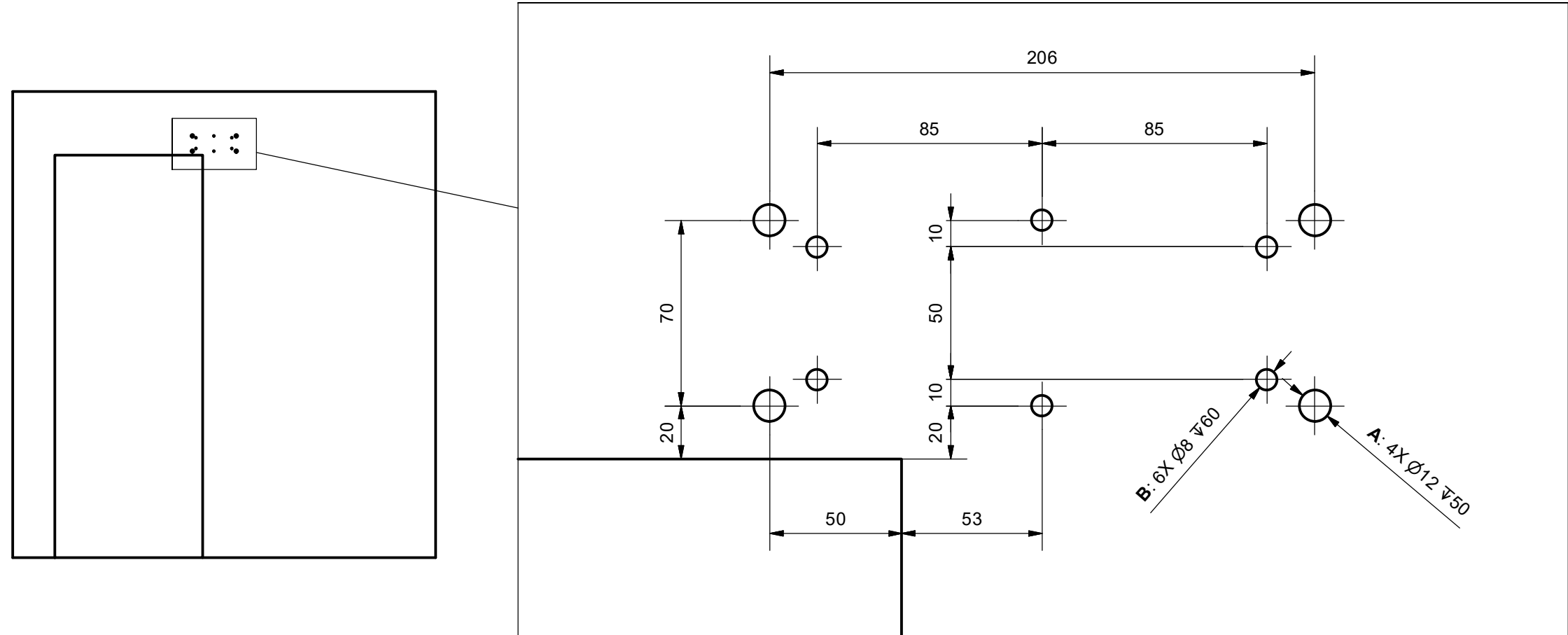
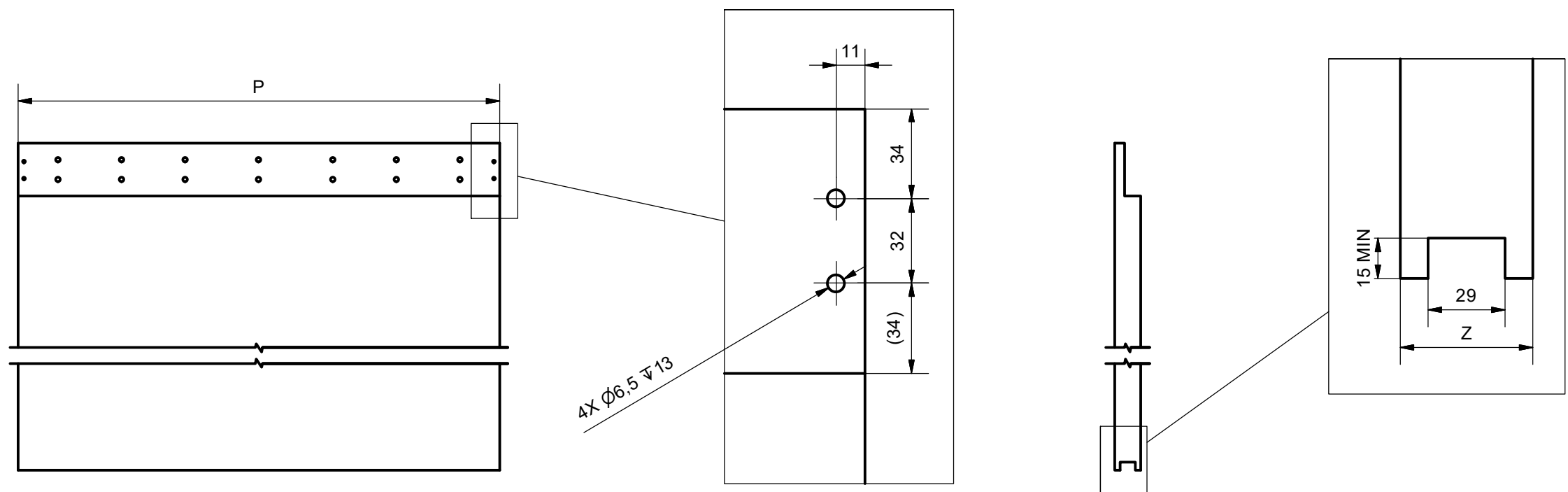


DIMENSIONI GENERALI GENERAL DIMENSIONS



DIMENSIONE - DIMENSION	SIMBOLO - SYMBOL	411/78.2000.22	411/78.2001.22	411/78.2002.22
LARGHEZZA - WIDTH	A	700	800	900
PASSAGGIO - OPENING	A1	625	725	825
LARGHEZZA PORTA - DOOR WIDTH	P	910	1010	1110

POSIZIONE FORI HOLES POSITION

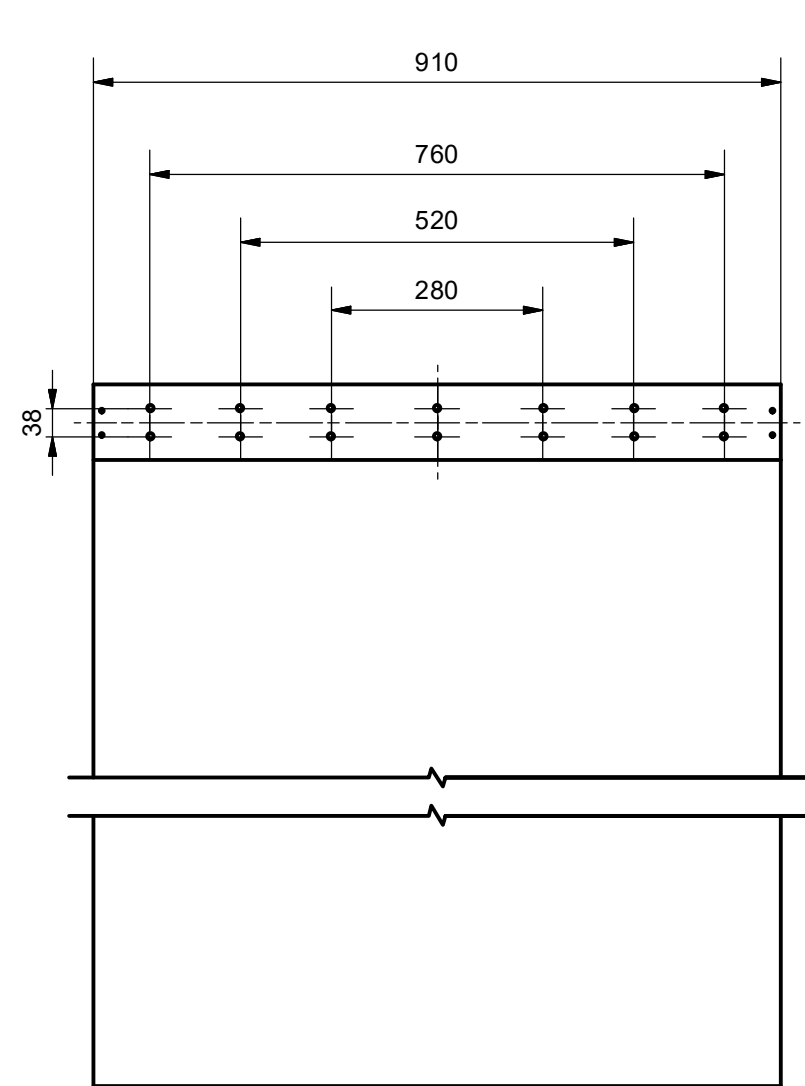


ESEGUIRE I FORI "A", POI
FISSARE LA PIASTRA CON I 4
TASSELLI "E" E USARLA COME
DIMA PER ESEGUIRE I FORI "B"
USATI PER FISSAGGIO CON I
SEI TASSELLI F.
*DRILL FIRST THE FOUR "A"
HOLES AND FIX THE PLATE
WITH THE FOUR "E" DOWELS,
THEN USE THE PLATE AS A
DIME FOR DRILLING THE SIX "B"
HOLES TO BE USED WITH
THE SIX "F" DOWELS.*

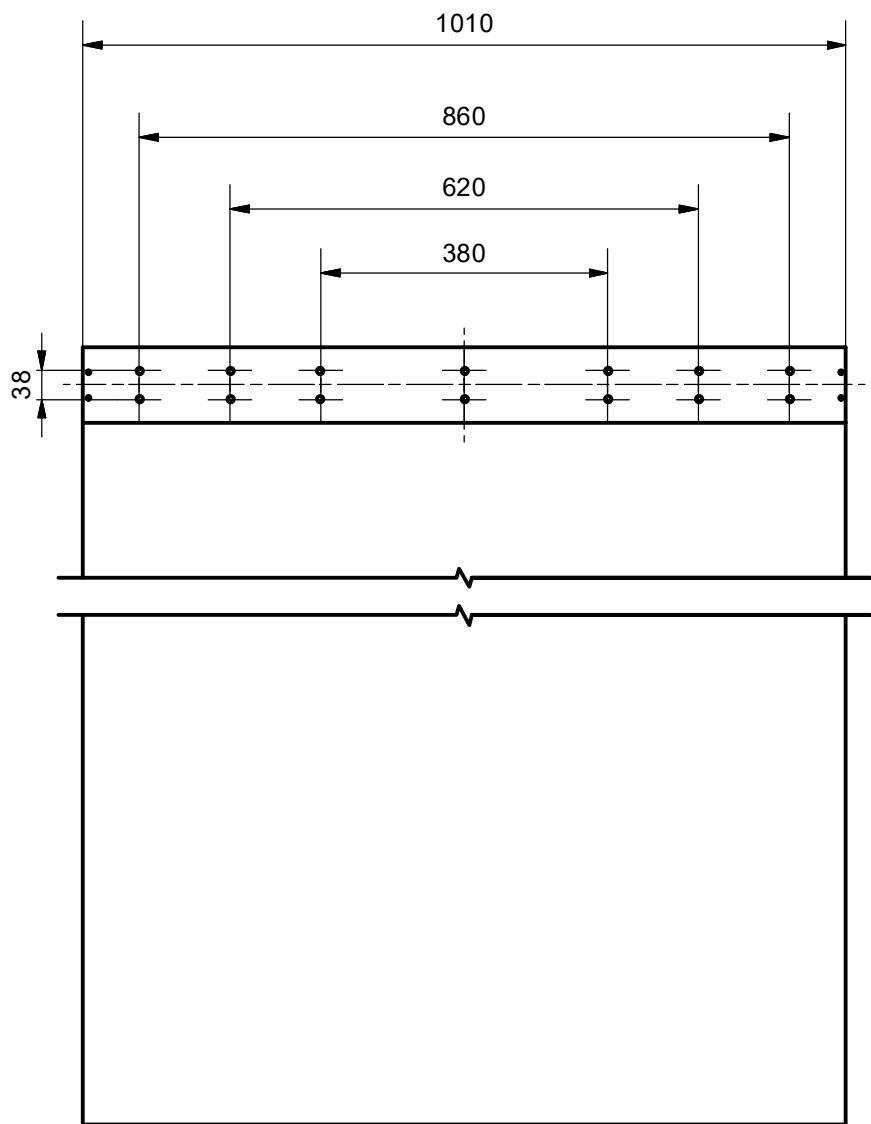
POSIZIONE FORI FISSAGGIO GUIDA - PORTA (CONSIGLIATO)

POSITION HOLES FIXING GUIDE - DOOR (RECOMMENDED)

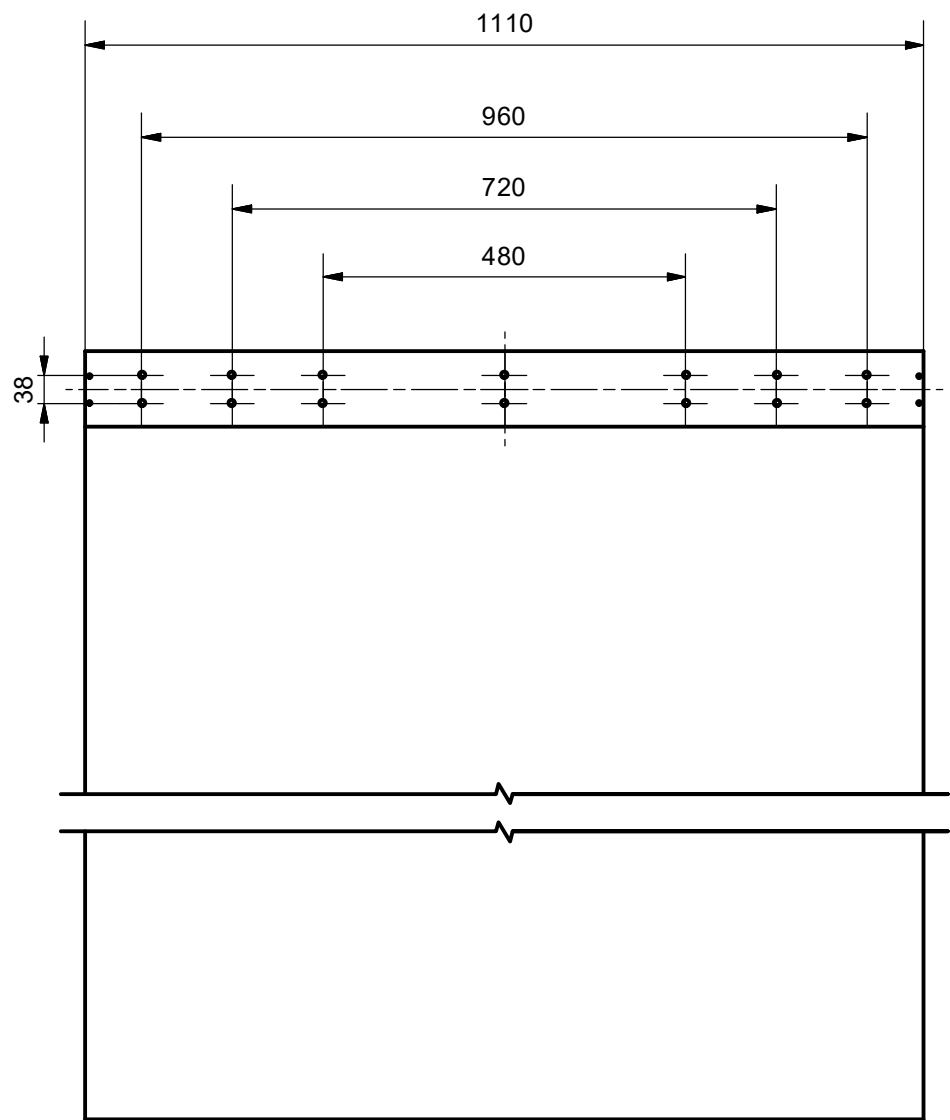
FORI FISSAGGIO GUIDA - PORTA Ø8 ∇13 PER BUSSOLE M6 (BUSSOLE E VITI NON INCLUSE)
FIXING HOLES GUIDE - DOOR. BUSH Ø8 x13 M6 (BUSHES AND SCREWS NOT INCLUDED)



411/78.2000.22



411/78.2001.22



411/78.2002.22

MONTAGGIO DEL MECCANISMO *MOUNTING OF THE MECHANISM*

