

Montageanleitung

Beschlag mit Punktbefestigung.

Ganzglasschiebetüren bis 40, 80, 120 und 160 kg.

Glasdicken (ESG) von 8, 10 und 12 mm (12,7 mm).

Instructions de montage

Ferrure avec dispositif de fixation par points.

Portes coulissantes tout-verre jusqu'à 40, 80, 120 et 160 kg.

Epaisseurs de verre (ESG): 8, 10 et 12 mm (12,7 mm).

Installation instructions

Hardware system with patch suspension.

All-glass sliding doors up to 40 (88 lbs.), 80 (176 lbs.),

120 (264 lbs.) and 160 kg (352 lbs.).

Glass thicknesses (ESG): 8 ($\frac{5}{16}$ "), 10 ($\frac{13}{32}$ ") and 12 mm ($\frac{15}{32}$ ") [$\frac{1}{2}$ "].

Istruzioni di montaggio

Ferramenta con fissaggio puntiforme.

Porte scorrevoli tuttovetro fino a 40, 80, 120 e 160 kg.

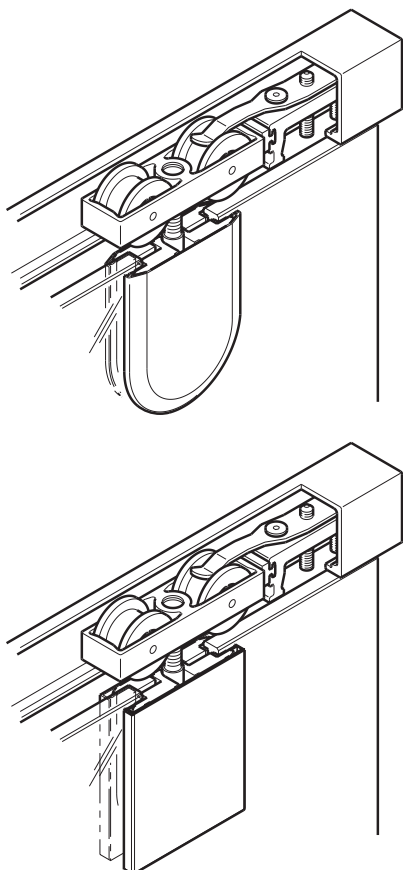
Spessore dei vetri (ESG) 8, 10 e 12 mm (12,7 mm).

Instrucciones de Montaje

Herraje con piezas de suspensión puntuales.

Puertas vidriadas hasta 40, 80, 120 y 160 kg.

Espesores de vidrio (ESG) de 8, 10 y 12 mm (12,7 mm).



■ Hawa-Teile ■ Eléments Hawa ■ Hawa components ■ Componenti Hawa ■ Componentes Hawa

Metric specifications are exact - Inches are approximate

Diese Zeichnung ist Eigentum der Hawa AG und darf weder verwertet, vervielfältigt noch Dritten zugänglich gemacht werden. Alle unsere Katalog-Zeichnungen sowie die speziellen Einbauzeichnungen im Massstab 1:1 usw. stellen Beispiele zum Einbau unserer Beschläge dar. Irgendwelche Ansprüche aus der Verwendung dieser Unterlagen können durch den Kunden nicht abgeleitet werden. Für bau-/projektbezogene, konstruktive Details wird keine Verantwortung übernommen.

Ce plan est la propriété de Hawa AG. Il ne peut être utilisé à titre lucratif, ni photocopié ou transmis à un tiers. Tous les plans publiés dans les catalogues, les plans de montage spéciaux à l'échelle 1:1 etc. représentent des exemples de montage de nos ferrures. Le client ne peut tirer des droits quelconques en utilisant de tels documents. Pour des détails constructifs touchant aux projets ou aux sites, toute responsabilités est déclinée.

This drawing remains the property of Hawa AG and may not be sold, reproduced or made available to third parties. All of our catalogue drawings and special full scale installation drawings etc. represent installations using our hardware and fittings. No claims on the part of the customers can be considered which arise in connection with the use of these documents. For site or project-related design details any liability is declined.

Questo disegno è proprietà di Hawa AG e non può essere usato a scopo di lucro, riprodotto e reso accessibile a terzi. Tutti i nostri disegni del catalogo nonché i particolari disegni di montaggio in scala 1:1 ecc. rappresentano esempi per il montaggio delle nostre ferramenta. Eventuali rivendicazioni a seguito dell'utilizzo di queste documentazioni non possono essere evidenziate da parte del cliente. Non assumiamo nessuna responsabilità per dettagli costruttivi che riguardano qualsiasi costruzioni o progetti.

Este documento es propiedad de la empresa Hawa AG. Se excluye la venta y reproducción, al igual que el acceso a terceras personas. Los planos contenidos en nuestros catálogos, al igual que los planos especiales de montaje a escala 1:1 etc. representan ejemplos para el montaje de nuestros herrajes. Su uso no implica la deducción de derechos, cualquiera sea su naturaleza, por parte del cliente. No asumimos ninguna responsabilidad por los detalles constructivos relativos a la construcción o proyectos.

HAWA - Junior 40-80-120-160/GP

<div>16023</div> <div>a</div>	Gezeichnet/Dessiné/Drafted/Disegnato/Dibujado 05.98 / Bruno Grossrieder	Internationale Schutzrechte Änderungen vorbehalten Droits internationaux déposés Sous réserve de modifications Swiss and foreign patents Design subject to modification Diritti protettivi internazionali Con riserva di apportare modifiche Derechos internacionales protegidos Planos sujetos a modificaciones
	Änderung/Modification/Modification/Modificazione/Modificación 11.2003 / Ruedi Niederer	
	Ersetzt/Remplacé/Replaced/Sostituito/Reemplazado -	
	Visum/Visa/Visa/Visto/Visado 01.2004 / Martin Frei	



Deutsch

HAWA-Junior 40-160/GP

HAWA-Junior 40/GP max. Türgewicht 40 kg

HAWA-Junior 80/GP max. Türgewicht 80 kg

HAWA-Junior 120/GP max. Türgewicht 120 kg

HAWA-Junior 160/GP max. Türgewicht 160 kg

Glasdicke ESG 10/12/12,7 mm.

Es darf ausschliesslich Einscheiben-Sicherheitsglas (ESG) verwendet werden.

Für die Planung einer Festverglasung unbedingt die Montageanleitung 16584 anfordern.

Für Wandbefestigung mit Winkelprofil Montageanleitung 18581 anfordern.

Français

HAWA-Junior 40-160/GP

HAWA-Junior 40/GP poids maximum par porte 40 kg

HAWA-Junior 80/GP poids maximum par porte 80 kg

HAWA-Junior 120/GP poids maximum par porte 120 kg

HAWA-Junior 160/GP poids maximum par porte 160 kg

Épaisseurs de glace 10/12/12,7 mm.

Il faut utiliser uniquement du verre de sécurité trempé (ESG).

Pour planifier un vitrage fixe HAWA-Junior/GP, il est en tout cas nécessaire de commander l'instruction de montage 16584.

Pour la fixation murale avec profil équerre, demander instructions de montage 18581.

English

HAWA-Junior 40-160/GP

HAWA-Junior 40/GP max. panel weight 40 kg

HAWA-Junior 80/GP max. panel weight 80 kg

HAWA-Junior 120/GP max. panel weight 120 kg

HAWA-Junior 160/GP max. panel weight 160 kg

Glass thicknesses 10/12/12,7 mm ($\frac{13}{32}$ " / $\frac{15}{32}$ " / $\frac{1}{2}$ ").

Merely toughened safety glass (ESG) may be employed.

When planning a HAWA-Junior/GP fixed-glass wall, it is an absolute must to ask for the installation instruction 16584.

Please request installation instruction 18581 for wall fixing with angled profile.

Italiano

HAWA-Junior 40-160/GP

HAWA-Junior 40/GP peso massimo della porta 40 kg

HAWA-Junior 80/GP peso massimo della porta 80 kg

HAWA-Junior 120/GP peso massimo della porta 120 kg

HAWA-Junior 160/GP peso massimo della porta 160 kg

Spessore del vetro ESG 10/12/12,7 mm.

È permesso usare esclusivamente vetro di protezione monovetro (ESG).

Per il progetto di una vetrata fissa HAWA-Junior/GP bisogna richiedere assolutamente la prescrizione di montaggio 16584.

Per fissaggio alla parete con profilo angolare, chiedere istruzioni di montaggio 18581.

Español

HAWA-Junior 40-160/GP

HAWA-Junior 40/GP peso máximo de puerta 40 kg

HAWA-Junior 80/GP peso máximo de puerta 80 kg

HAWA-Junior 120/GP peso máximo de puerta 120 kg

HAWA-Junior 160/GP peso máximo de puerta 160 kg

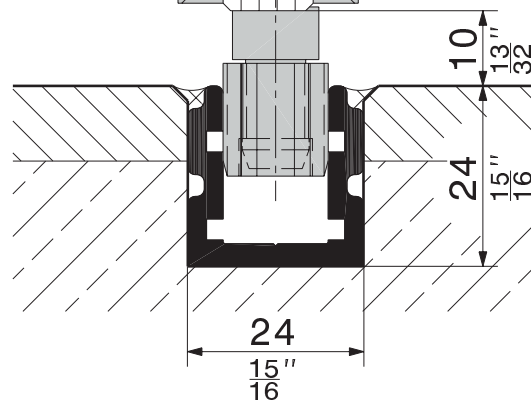
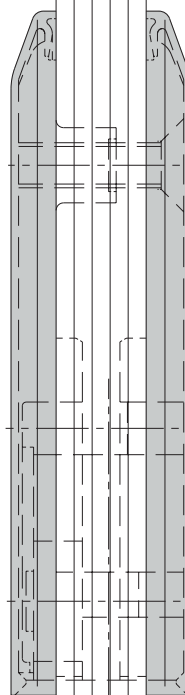
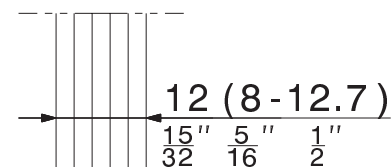
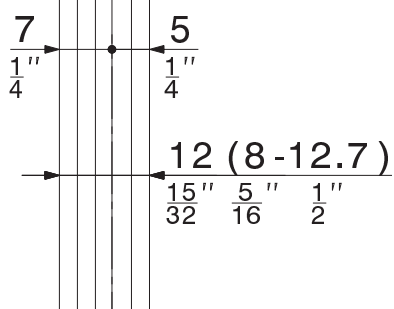
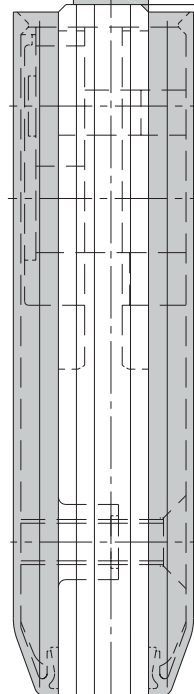
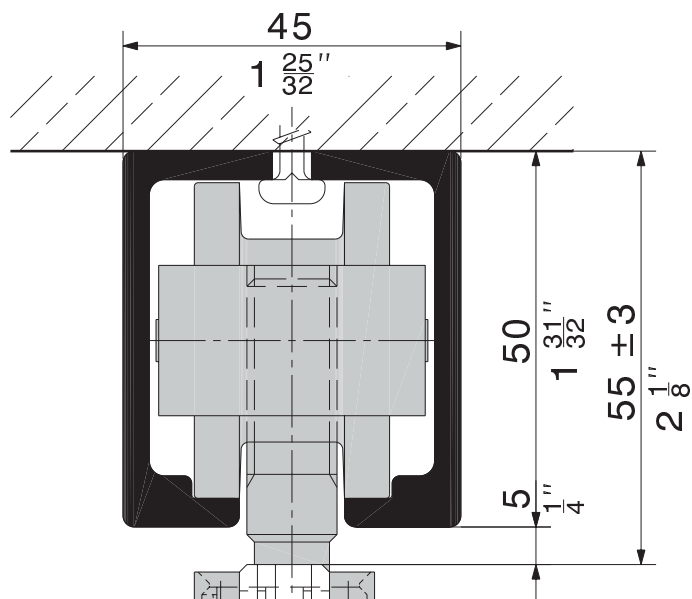
Espesor del vidrio ESG 10/12/12,7 mm.

Deben ser utilizados exclusivamente vidrios de seguridad de una sola hoja (ESG).

Para la planificación de paños vidriados fijos HAWA-Junior/GP es absolutamente necesario solicitar la instrucción de montaje 16584.

Por favor solicitar la instrucción de montaje 18581 para la fijación mural con perfil angular.

HAWA-Junior 120/GP

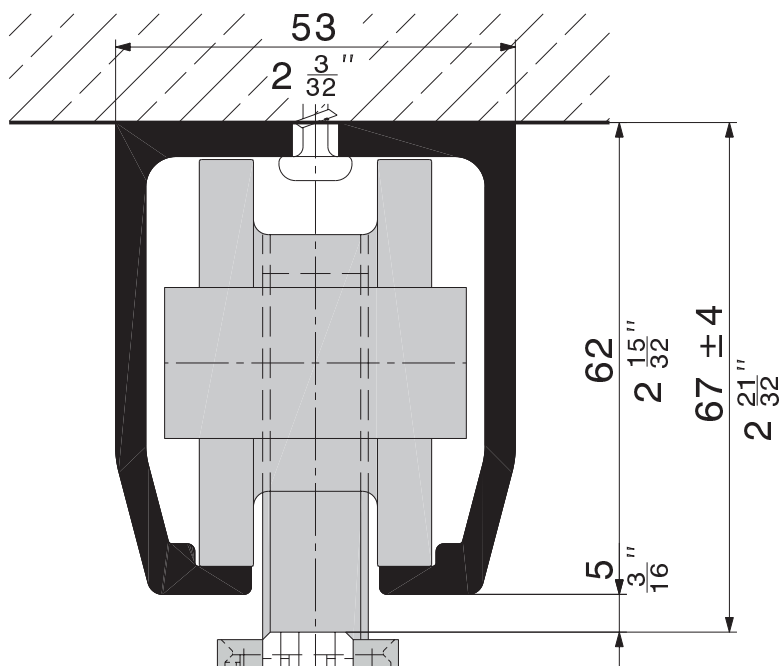


1:1

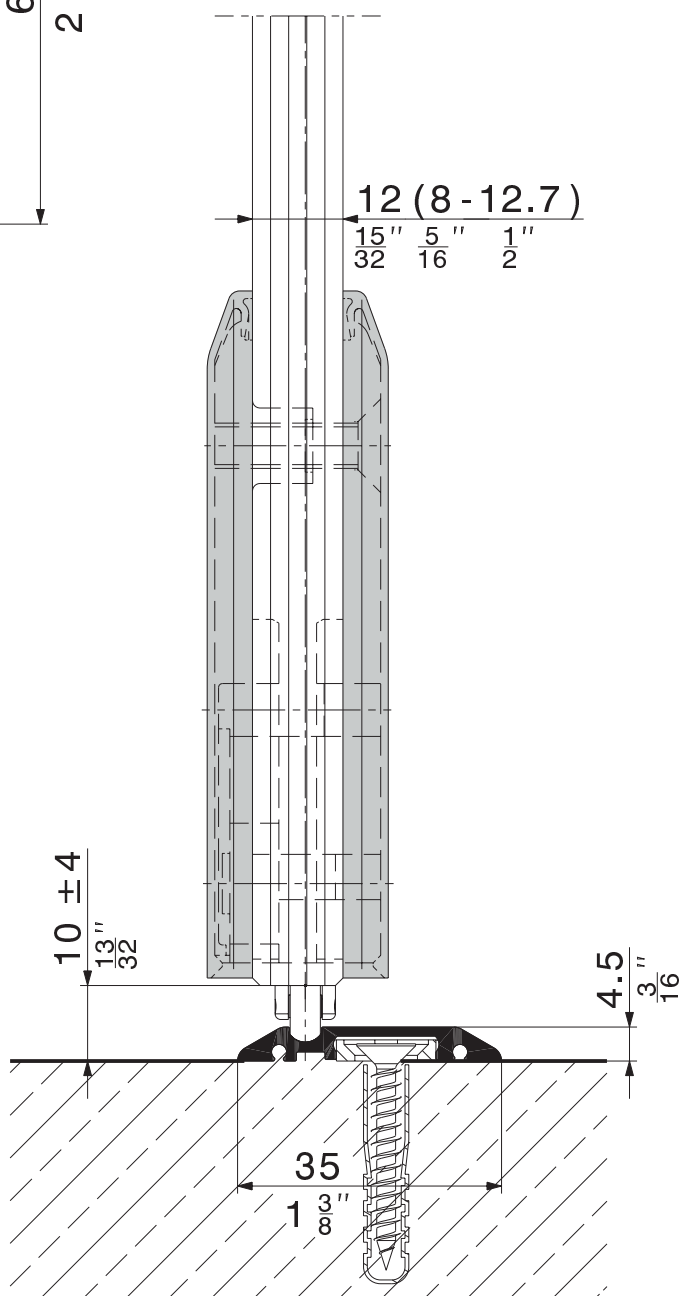
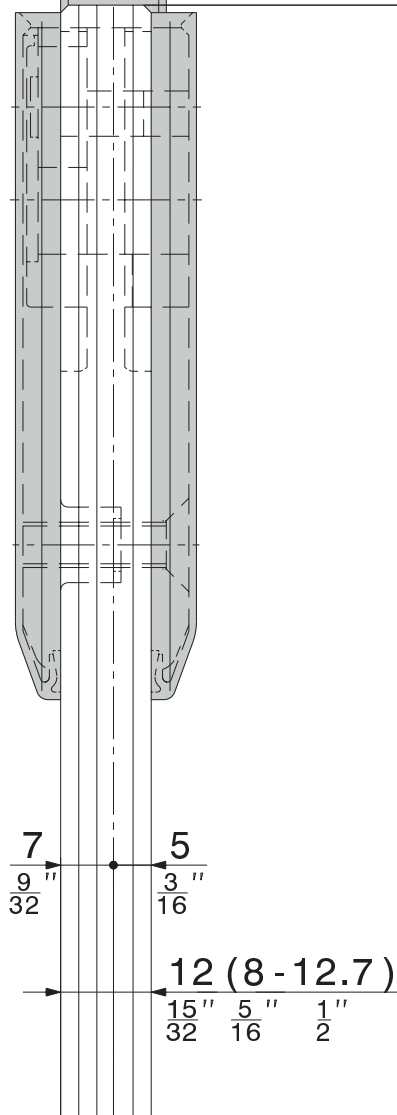
Technische Änderungen vorbehalten
Sous réserve de modifications techniques
Subject to modification

Ci si riserva di apportare modifiche tecniche
Bajo reserva de modificaciones técnicas

HAWA-Junior 160/GP

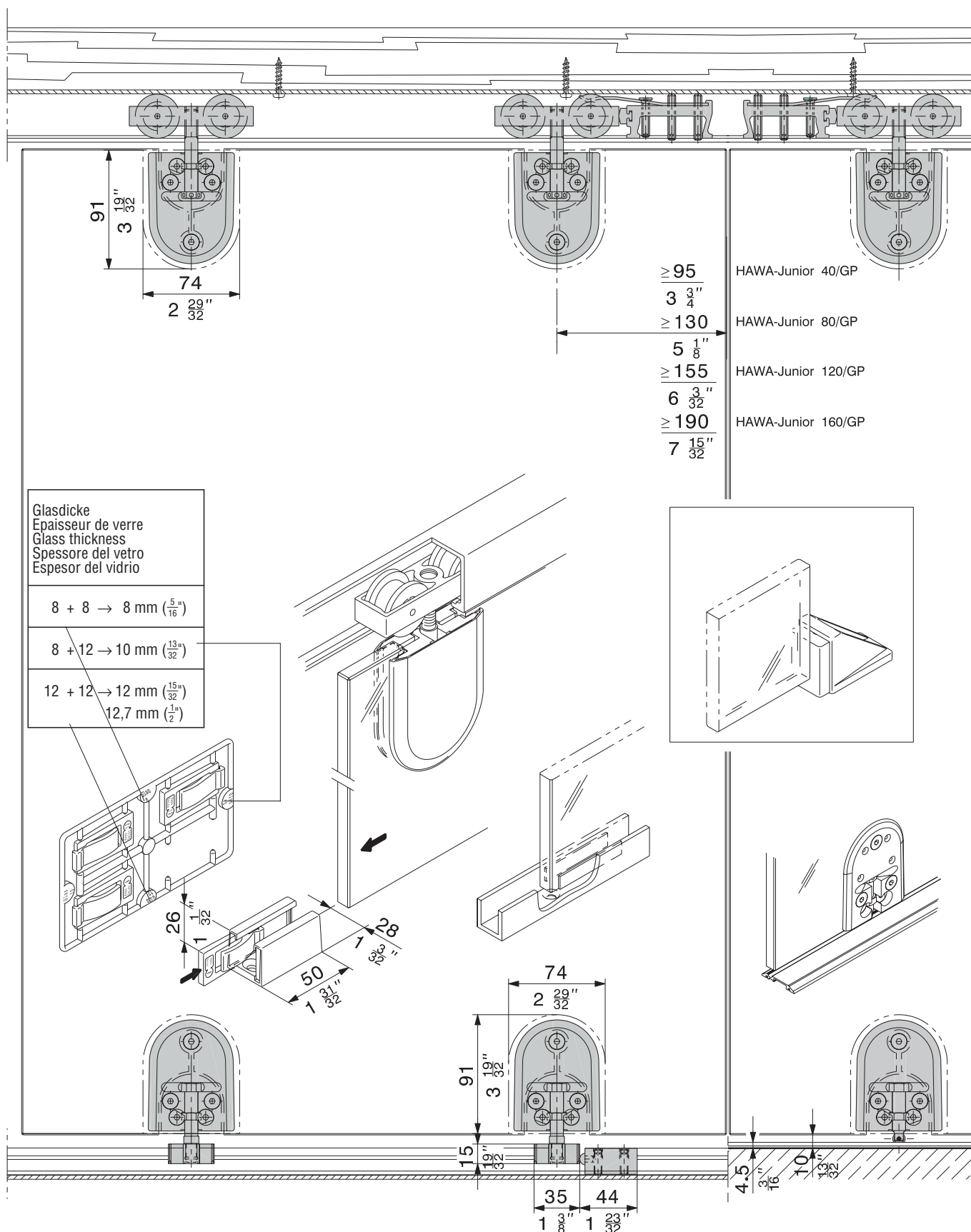


1:1



Technische Änderungen vorbehalten
Sous réserve de modifications techniques
Subject to modification

Ci si riserva di apportare modifiche tecniche
Bajo reserva de modificaciones técnicas



Empfehlung: ab 1200 mm Türbreite → Führungsschiene / 2 Führungen. Junior 160/GP immer mit 2 Führungen.

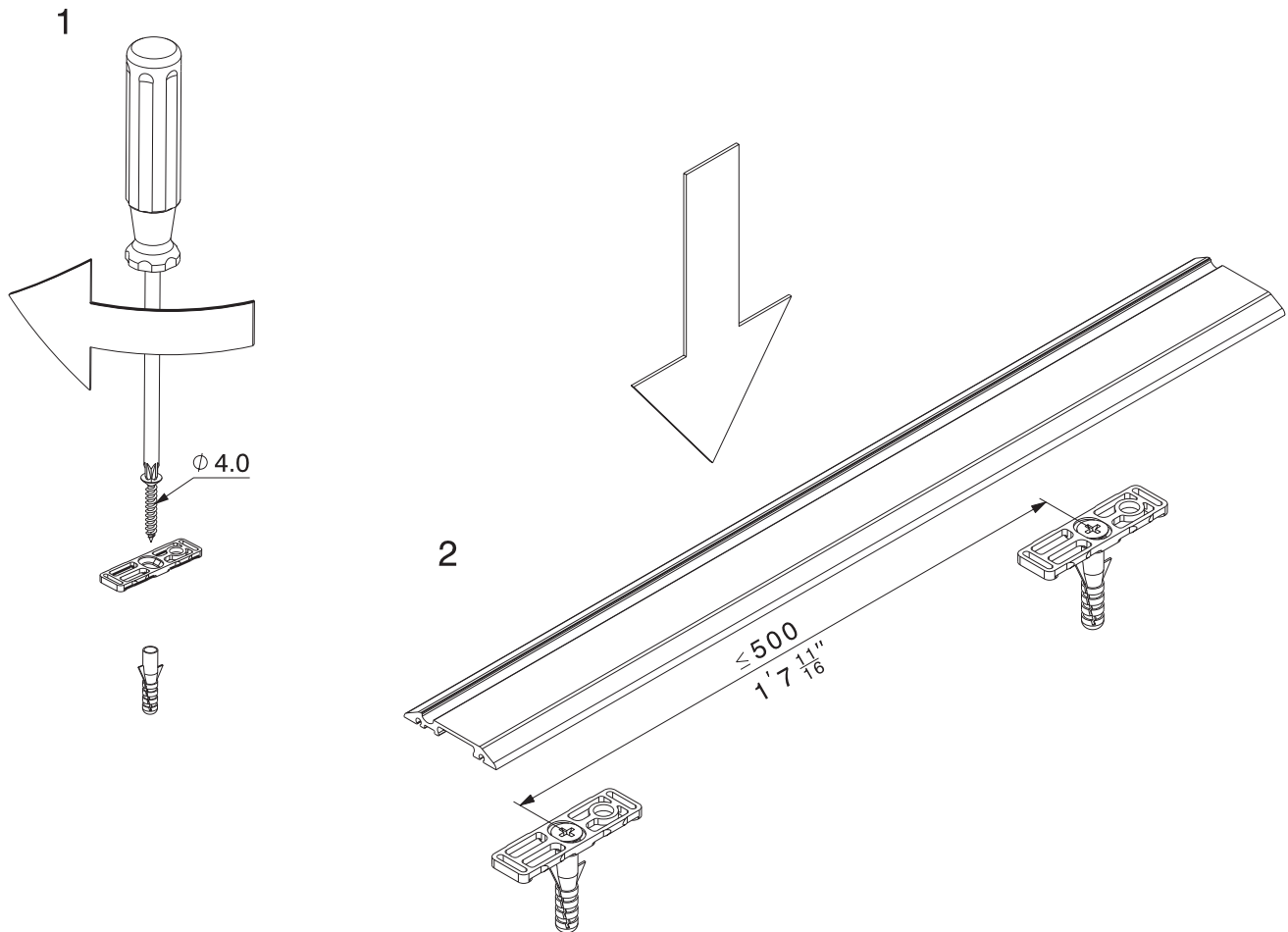
A partir d'une largeur de porte de 1200 mm, il est recommandé de prévoir le rail de guidage / 2 unités de guide. Junior 160/GP toujours 2 guidages.

As from a panel width of 1200 mm (3'11 1/4") it is recommended to use the bottom guide channel / 2 guide units. Junior 160/GP sempre due guide.

Avvertenza: dalla larghezza di battente di 1200 mm → rotaia / 2 guide. Junior 160/GP sempre due guide.

Recomendación: para anchos de batiente a partir de 1200 mm → riel de guía / 2 piezas de guiado. Junior 160/GP siempre 2 piezas de guiado.

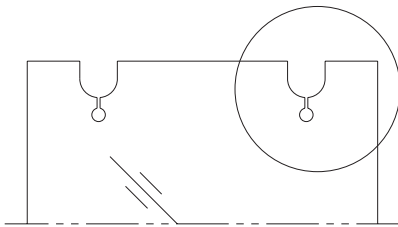
Montage der Führungsschiene
Montage du rail de guidage
Mounting of bottom guide channels
Montaggio guida
Montaje de los guías inferiores



Technische Änderungen vorbehalten
Sous réserve de modifications techniques
Subject to modification

Ci si riserva di apportare modifiche tecniche
Bajo reserva de modificaciones técnicas

Glasausschnitt
Découpe de verre
Glass cutout
Intaglio del vetro
Muecas en el vidrio



Glasausschnitt zu Junior GP Schiebetüre.

Die Glasausschnitte für die Festverglasung sind nicht gleich, siehe Montageanleitung Nr. 16584.

Découpe de verre des portes coulissantes Junior GP.

La découpe de verre des glaces fixes n'est pas la même, voir instructions de montage n° 16584.

Glass cutouts for Junior GP glass sliding doors

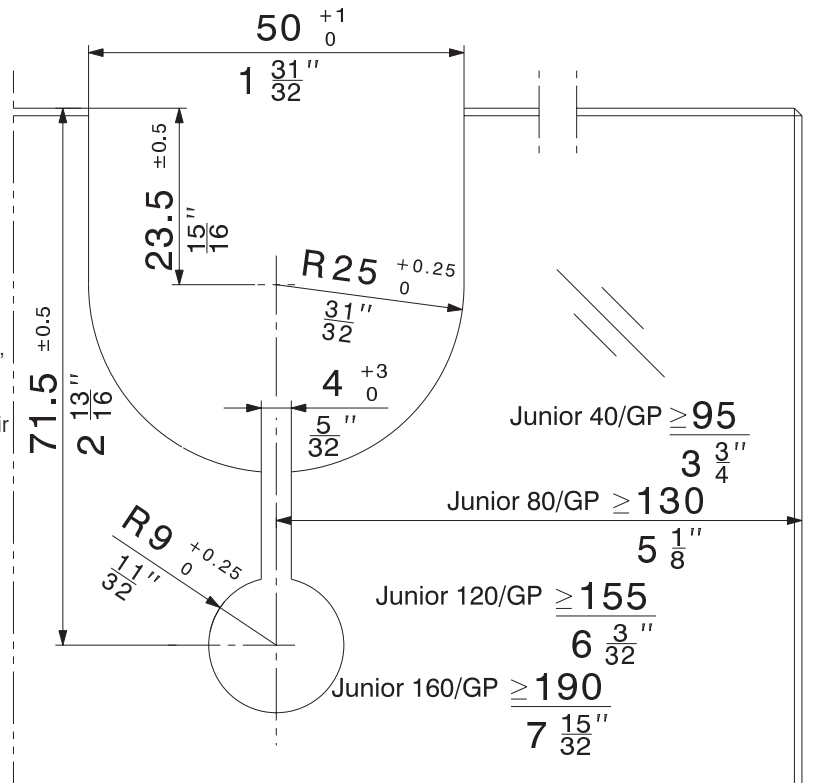
Glass cutouts for stationary glazing are not the same, see installation instructions code 16854.

Intaglio del vetro per porte scorrevoli Junior GP

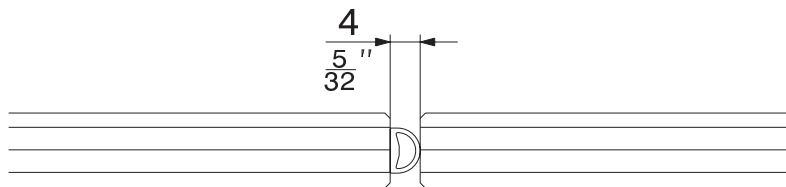
Gli intagli del vetro per vetrificazione fissa non sono uguali, vedi istruzioni di montaggio no. 16854.

Muecas en el vidrio para puertas deslizantes Junior GP

Las muescas en el vidrio para el vidrio fijo no son iguales, ver instrucción de montaje n° 16584.



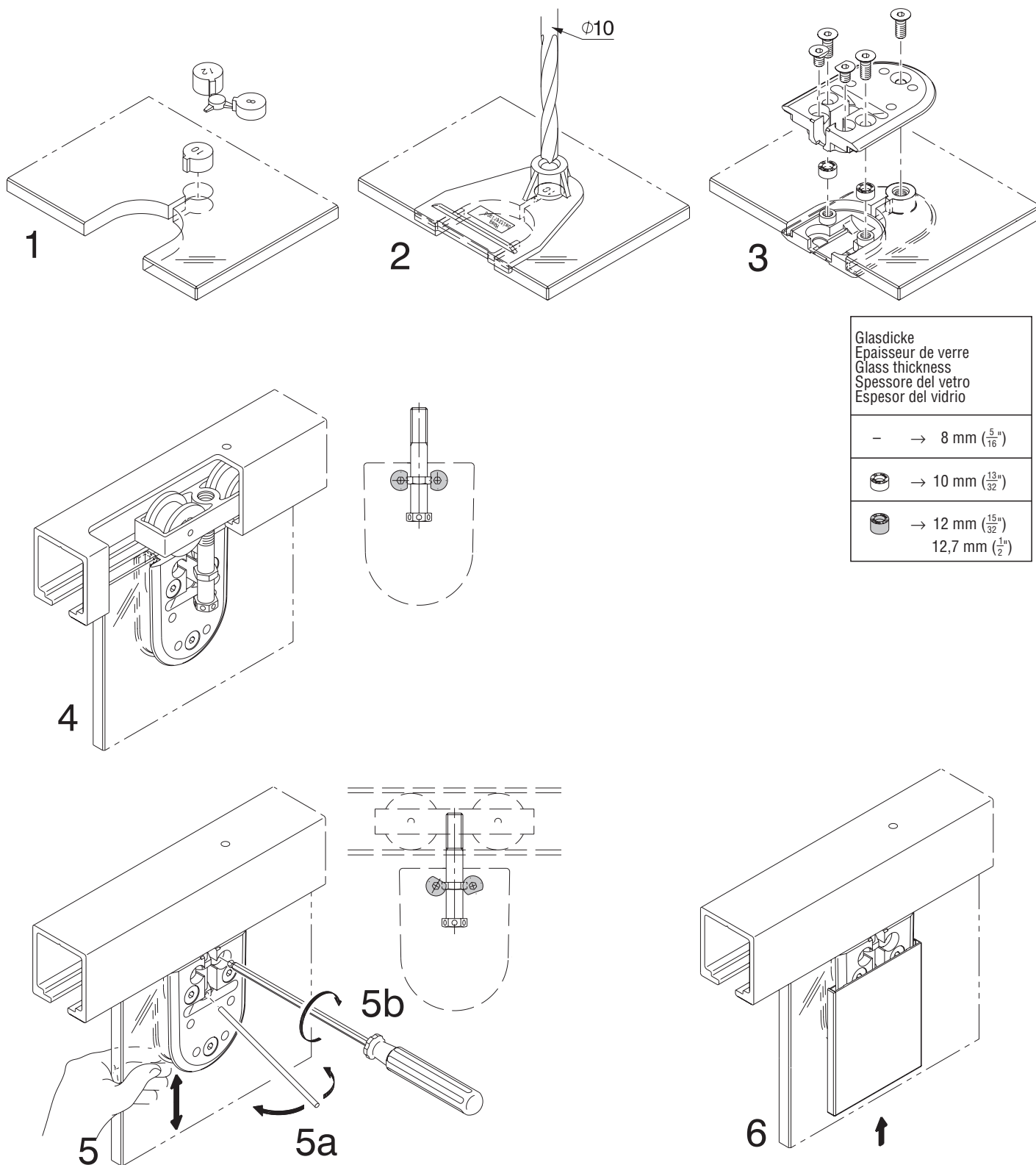
Dichtungsprofil
Profil d'échantéité
Seal profile
Profilo guarnizione
Cubrejuntas



Technische Änderungen vorbehalten
 Sous réserve de modifications techniques
 Subject to modification

Ci si riserva di apportare modifiche tecniche
 Bajo reserva de modificaciones técnicas

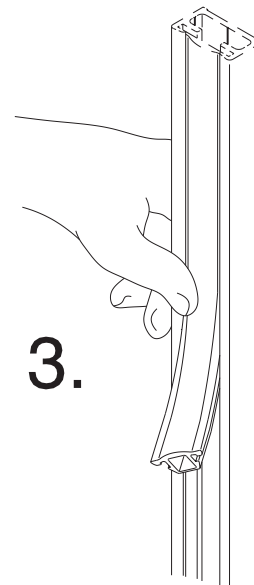
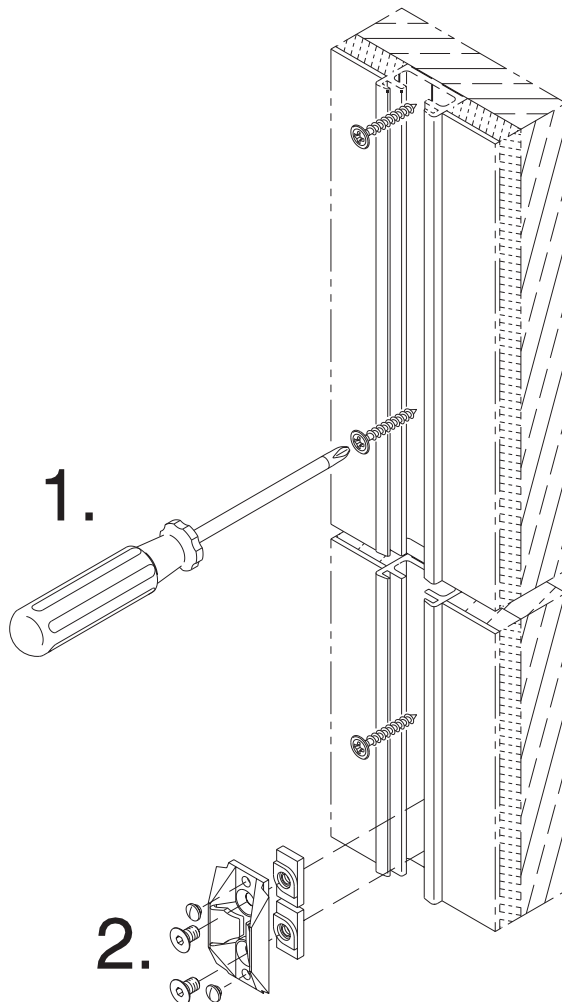
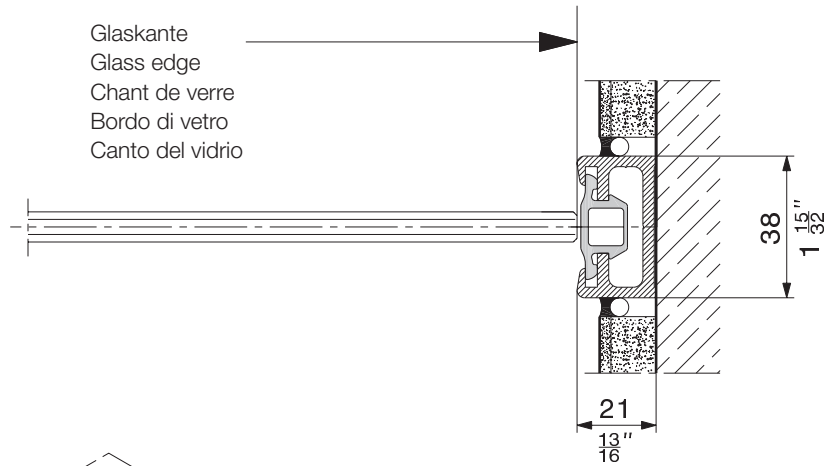
Montage Glastüre
Montage porte en verre
Mounting of glass door
Montaggio porta in vetro
Montaje puerta de vidrio



Technische Änderungen vorbehalten
 Sous réserve de modifications techniques
 Subject to modification

Ci si riserva di apportare modifiche tecniche
 Bajo reserva de modificaciones técnicas

Montage Wandanschluss
Montage raccordement mural
Mounting wall attachment
Montaggio collegamento a parete
Montaje de encuentro con pared



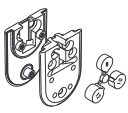
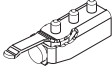


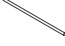


Technische Änderungen vorbehalten
 Sous réserve de modifications techniques
 Subject to modification



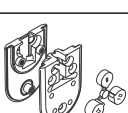
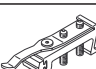


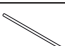
Ci si riserva di apportare modifiche tecniche
 Bajo reserva de modificaciones técnicas

Beschlägeübersicht
Composants de la ferrure
Hardware system components
Assortimento ferramenta
Componentes de los herrajes



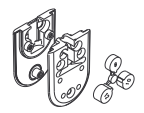
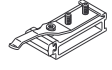


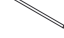
HAWA-Junior 40/GP

	10420
	16017
	16033
	10640
	15992
	10629
	16329

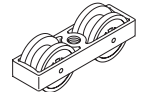

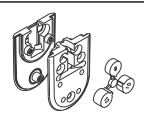
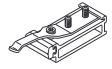


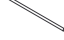
HAWA-Junior 80/GP

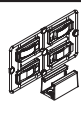
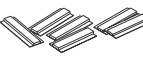

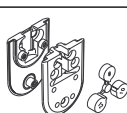







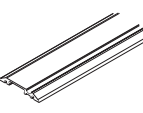



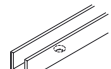
	10407
	16018
	16033
	10628
	15992
	10629
	16329

HAWA-Junior 120/GP

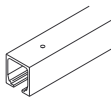
	14857
	16019
	16033
	14858
	15992
	10629
	16329

HAWA-Junior 160/GP

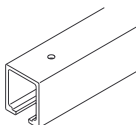
	10416
	19605
	16033
	10639
	15992
	10629
	16329

		16029
	8 mm ($\frac{5}{16}$) Glas/glaze/glass/ vetro/vidrios	16192
	10 mm ($\frac{13}{32}$) Glas/glaze/glass/ vetro/vidrios	16193
		16033
		16020
		17782
		15916
		16656
		16657
		18619
		19150
	2500 (8'2 $\frac{7}{16}$)	19348
	3500 (11'5 $\frac{13}{16}$)	19349
	6000 (19'8 $\frac{7}{32}$)	18956
	nach Mass sur mesure cut to size su misura a medida	19350
		19162
	6000 (19'8 $\frac{7}{32}$)	15405
	nach Mass sur mesure cut to size su misura a medida	15551
		15636
	6000 (19'8 $\frac{7}{32}$)	14414
	nach Mass sur mesure cut to size su misura a medida	14415

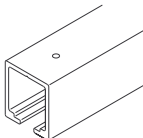
HAWA-Junior 40/GP

	1400 (4'7 $\frac{1}{8}$ ")	10213
	1600 (5'3)	10214
	1800 (5'10 $\frac{7}{8}$ ")	10215
	2000 (6'6 $\frac{3}{4}$ ")	10216
	3000 (9'10 $\frac{1}{8}$ ")	18530
	4000 (13'1 $\frac{1}{2}$ ")	18531
	6000 (19'8 $\frac{7}{32}$ ")	10211
	nach Mass sur mesure cut to size su misura a medida	10217

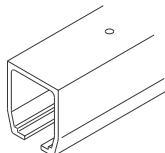
HAWA-Junior 80/GP






	1400 (4'7 $\frac{1}{8}$ ")	10189
	1600 (5'3)	10190
	1800 (5'10 $\frac{7}{8}$ ")	10191
	2000 (6'6 $\frac{3}{4}$ ")	10192
	2200 (7'2 $\frac{5}{8}$ ")	10193
	2500 (8'2 $\frac{7}{16}$ ")	10194
	3000 (9'10 $\frac{1}{8}$ ")	18532
	4000 (13'1 $\frac{1}{2}$ ")	18533
	6000 (19'8 $\frac{7}{32}$ ")	10186
	nach Mass sur mesure cut to size su misura a medida	10188


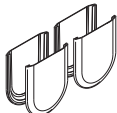
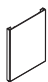

HAWA-Junior 120/GP

	2500 (8'2 $\frac{7}{16}$ ")	14866
	3000 (9'10 $\frac{1}{8}$ ")	14867
	4000 (13'1 $\frac{1}{2}$ ")	14868
	6000 (19'8 $\frac{7}{32}$ ")	14869
	nach Mass sur mesure cut to size su misura a medida	14871

HAWA-Junior 160/GP

	3000 (9'10 $\frac{1}{8}$ ")	10205
	4000 (13'1 $\frac{1}{2}$ ")	10206
	5000 (16'4 $\frac{27}{32}$ ")	10208
	6000 (19'8 $\frac{7}{32}$ ")	10203
	nach Mass sur mesure cut to size su misura a medida	10207

	2500 (8'2 $\frac{7}{16}$ ")	17020
	3500 (11'5 $\frac{13}{16}$ ")	17021
	2500 (8'2 $\frac{7}{16}$ ")	16452
	3500 (11'5 $\frac{13}{16}$ ")	16453
		18663
 schwarz, noir, black, nero, negro	5 m (16'4 $\frac{27}{32}$ ")	19442
	10 m (32'9 $\frac{23}{32}$ ")	19443
	50 m (164')	19444
 transparent	5 m (16'4 $\frac{27}{32}$ ")	19445
	10 m (32'9 $\frac{23}{32}$ ")	19446
	50 m (164')	19447

  rund rond rounded rotondo redondo	verchromt matt chromé mat dull chromium finish cromato opaco cromado mate	1 Stk./p.	16049
		4 Stk./p.	16042
	verchromt poliert chromé poli polished chromium finish cromato lucidato cromado pulido	1 Stk./p.	17161
		4 Stk./p.	17160
	vermessingt poliert laiton poli brass, polished ottone lucidato latonado pulido	1 Stk./p.	16050
		4 Stk./p.	16043
  eckig angulaire square angolare angular	Edelstahl-Effekt imitation Inox stainless-steel effect effetto acciaio inossidabile efecto acero inoxidable	1 Stk./p.	16051
		4 Stk./p.	16044
	roh brut raw grezzo en bruto	1 Stk./p.	15823
	verchromt matt chromé mat dull chromium finish cromato opaco cromado mate	1 Stk./p.	19091
		4 Stk./p.	19092
	Edelstahl-Effekt imitation Inox stainless-steel effect effetto acciaio inossidabile efecto acero inoxidable	1 Stk./p.	19093
		4 Stk./p.	19094
	roh brut raw grezzo en bruto	1 Stk./p.	19000

Technische Änderungen vorbehalten
Sous réserve de modifications techniques
Subject to modification

Ci si riserva di apportare modifiche tecniche
Bajo reserva de modificaciones técnicas