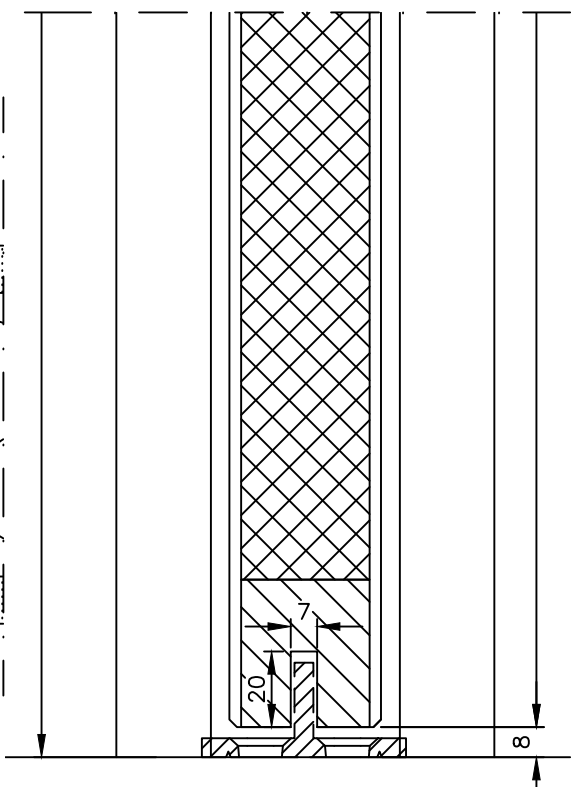
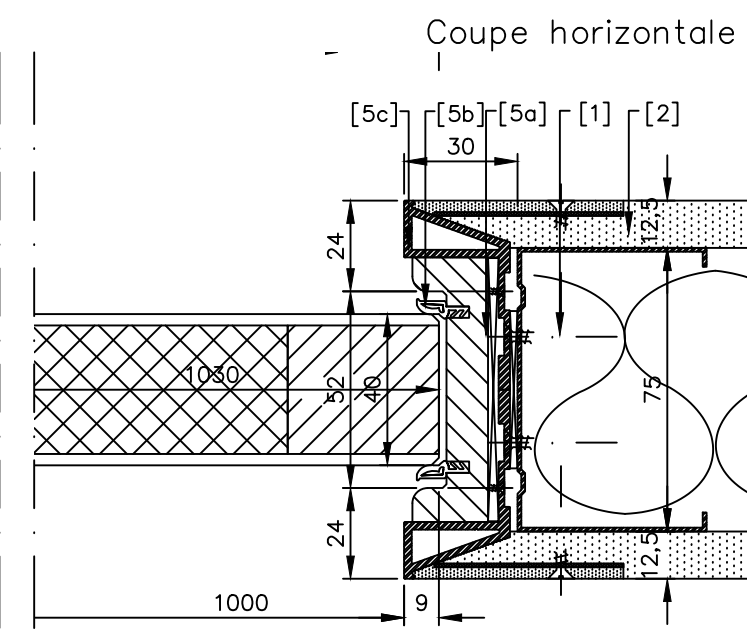
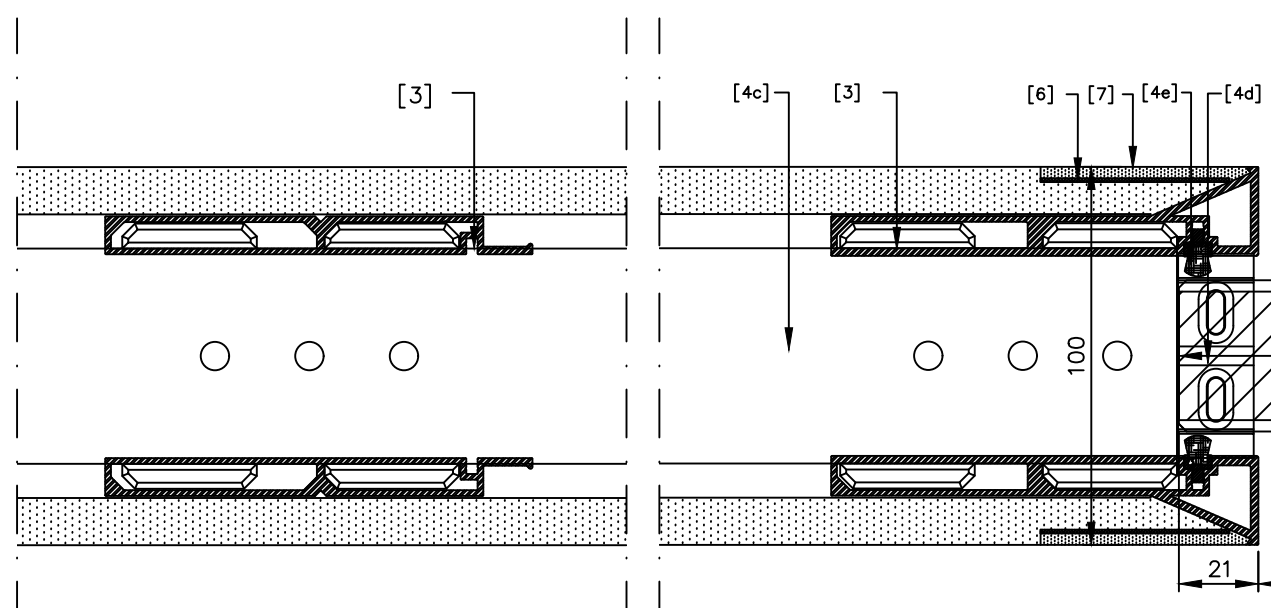
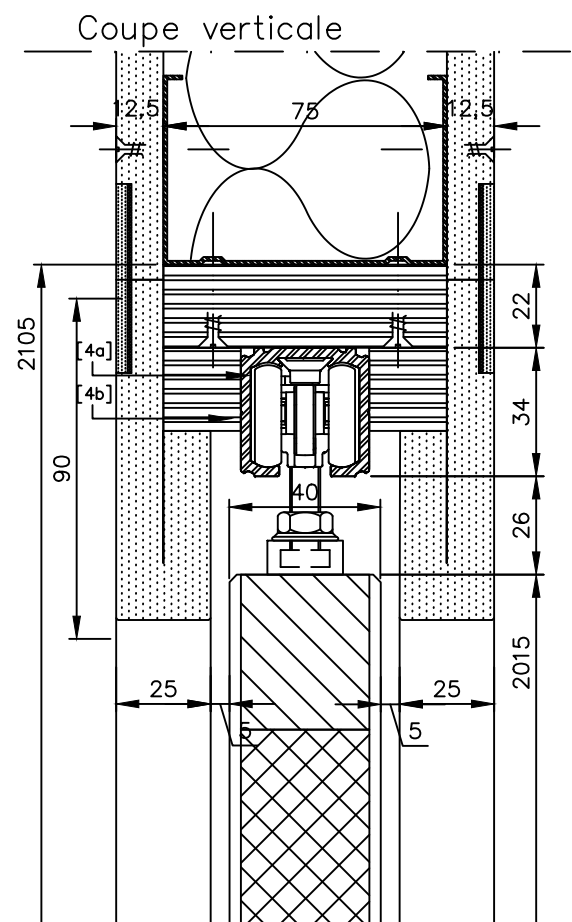


LEGENDE

1. Metal Stud 75mm + 2x carton-plâtre 12.5 (100mm)
2. Carton-plâtre 12.5mm
3. BOX 1: MONTANTS
4. BOX 2: RAIL + TRAVERSE + GARNITURE
 - a. Rail
 - b. Traverse
 - c. Plaque de base
 - d. Guide inférieur
 - e. Brosse d'étanchéité
5. BOX 3: FINITION
 - a. Latte d'arrêt
 - b. Joint d'étanchéité XD.X000-.G
 - c. Montants
6. Bande de papier P50 of similaire
7. Couche de finition (Jointfiller vario, Promix Premium, bande de papier P50 ou similaire)



	Type:	X5 - MS75	Date	Feuille
	Version:	XINNIX Selection 2017	Dessine par	
	Finition:	XINNIX	Echelle	Plan nr.
	INSTALLATION:	Porte 1030x2015x40mm	Norm	Dossier