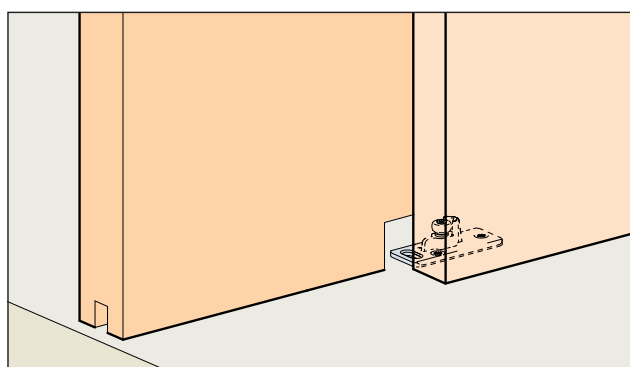
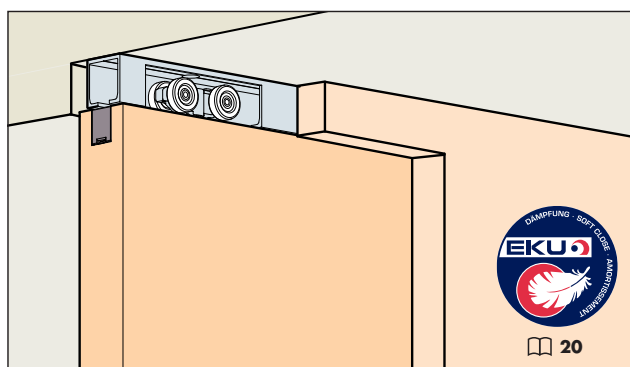


Montageanleitung Mounting instructions Instructions de montage

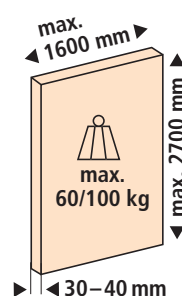
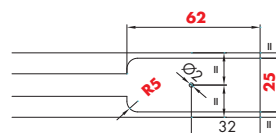
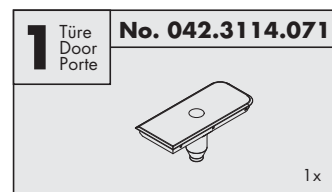


EKU PORTA® 60|100 HMT

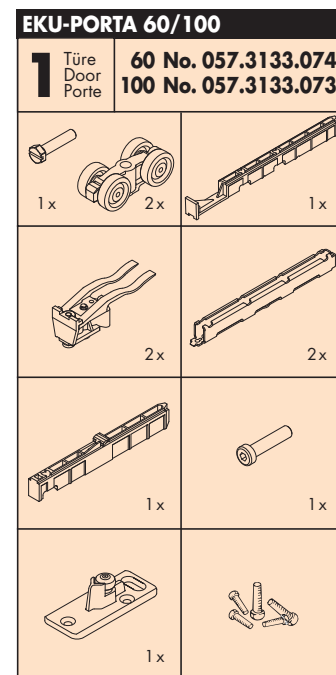
Anforderungen erfüllt nach
DIN - EN 1527 - 620 - 0 - 13



Garnituren / Sets / Garnitures



Garnituren / Sets / Garnitures



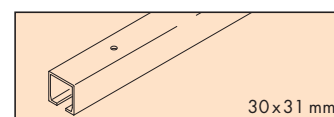
Zubehör / Accessories / Accessoires

Einfachlaufschiene, Alu, gelocht

Running track, aluminium, pre-drilled
Rail de roulement, en alu, perforé

Gr./Size Art. No.

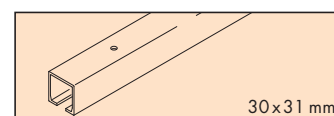
1500 mm	057.3016.150
1700 mm	057.3016.170
2000 mm	057.3016.200
2500 mm	057.3016.250
6000 mm	057.3016.600



Einfachlaufschiene, Alu eloxiert, gelocht

Running track, aluminium anodized, pre-drilled
Rail de roulement, en alu anodisé, perforé

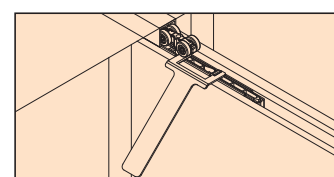
2000 mm	057.3016.201
2500 mm	057.3016.251
6000 mm	057.3016.601



Demontageschlüssel

Removal key
Clé de démontage

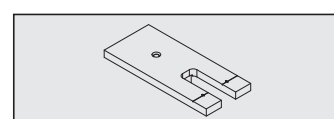
042.3119.101



Fräslöhre für Montageöffnung

Routing jig for assembly opening
Gabarit de fraisage pour ouverture de montage

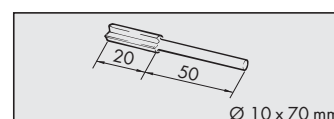
042.3118.071



Nutfräser HM (Hartmetall)

Groove cutter HM (hard metal)
Fraise à rainurer HM (métal dur)

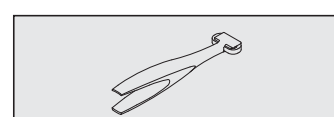
600.0000.309



Schienenreiniger, Kunststoff grau

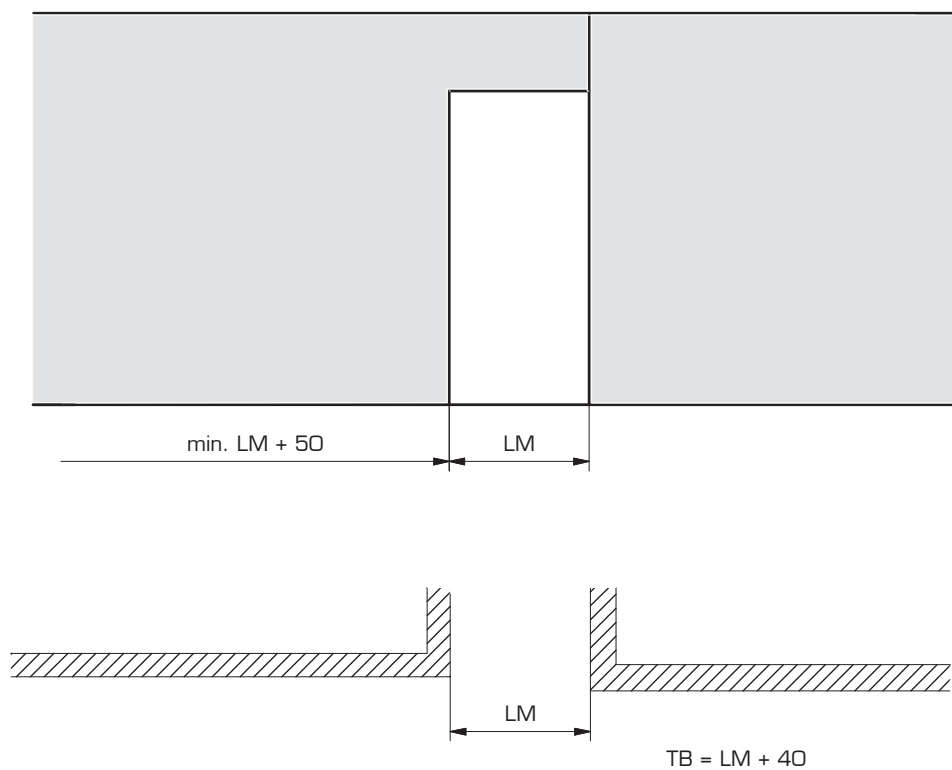
Track cleaner, plastic grey
Nettoyant pour rails, plastique gris

057.3099.071

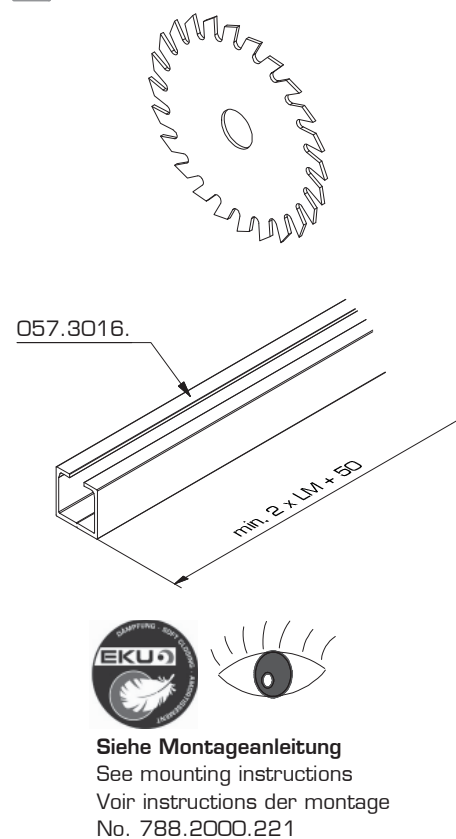


EKU AG Schiebelösungen, Wilerstrasse 90, 8370 Sirmach, Switzerland, Tel. +41 (0)71 96 96 100
Fax +41 (0)71 96 96 110, office@eku.ch, www.eku.ch Certified ISO 9001 - Member of the HAWA Group

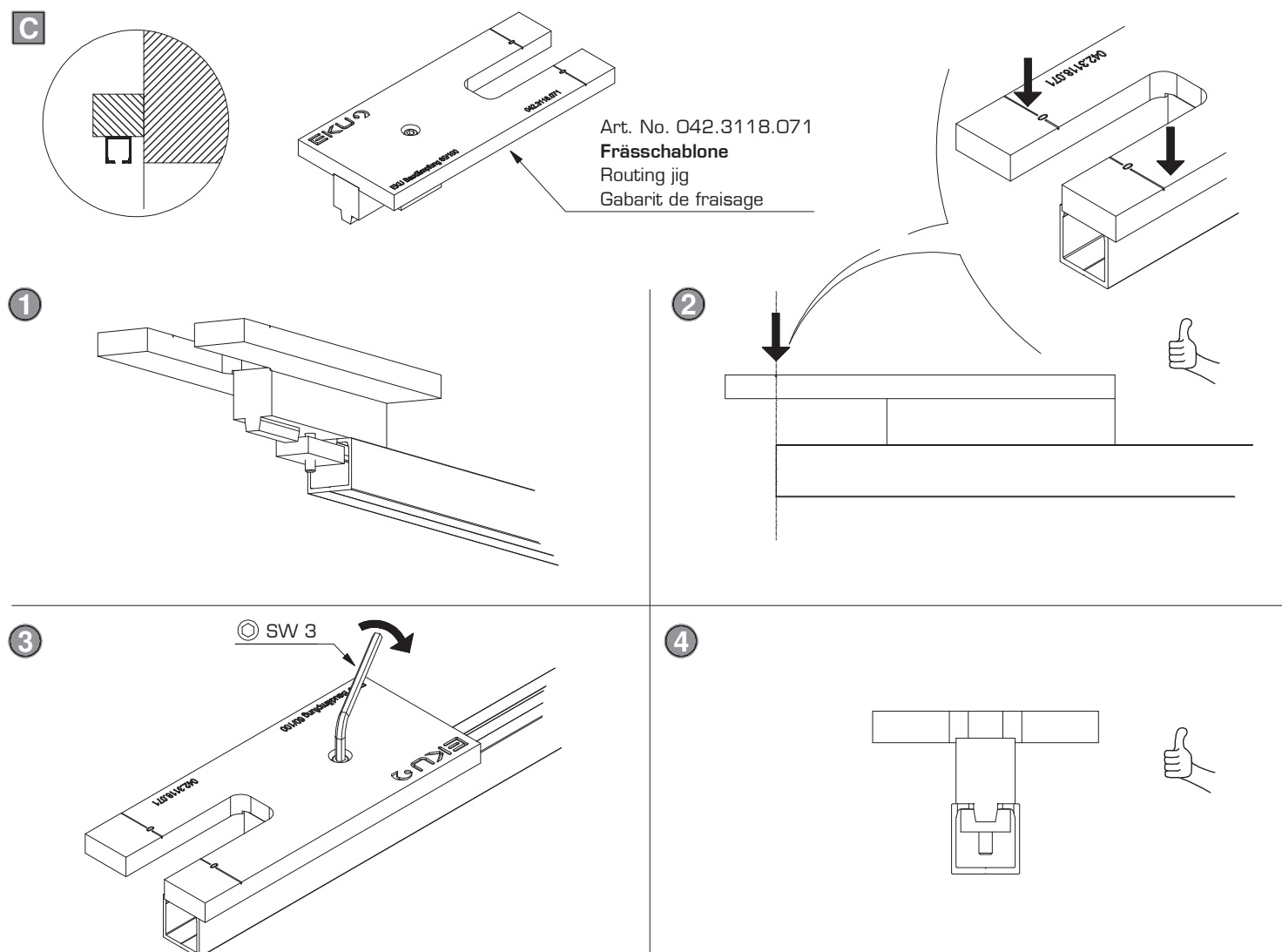
A



B



C



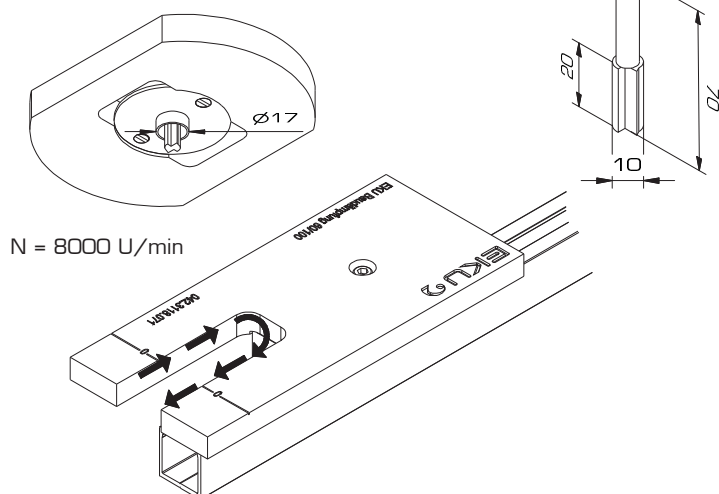
5

Art. No. 600.0000.309

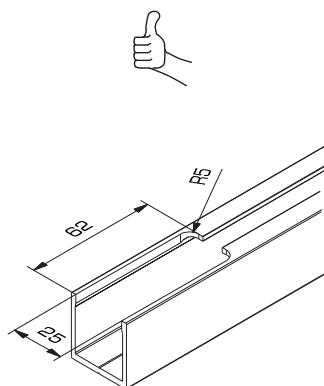
Nutfräser HM (Hartmetall), Ø 10mm, Länge 70mm

Groove cutter HM (hard metal), Ø 10mm, length 70mm

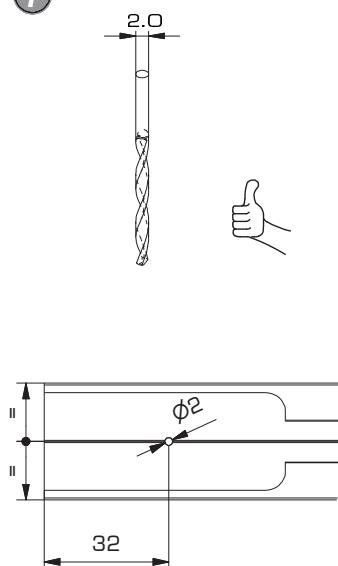
Fraise à rainurer HM (métal dur), Ø 10mm, longueur 70mm



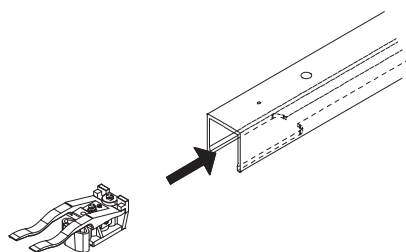
6



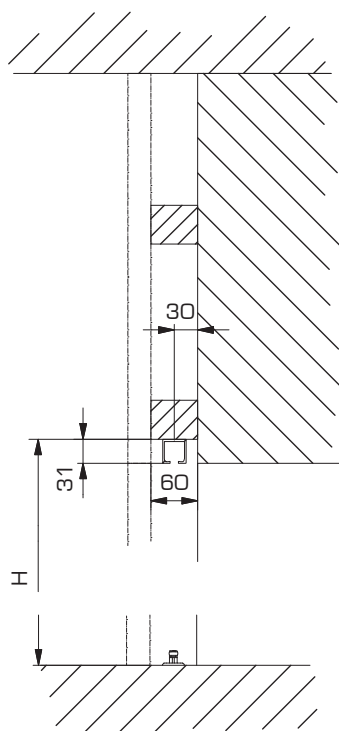
7



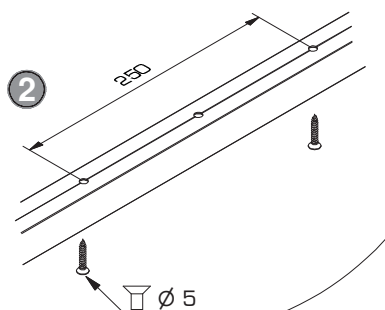
D



E



2



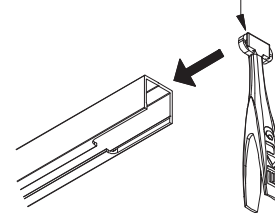
3

Schienenreiniger

Trail cleaner

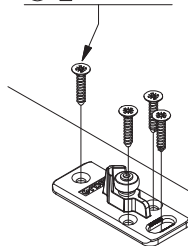
Nettoyant pour rails

Art. No. 057.3099.071



4

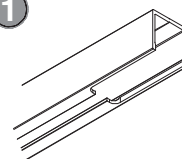
PZ No. 2
⊕ Ø 4 x 20



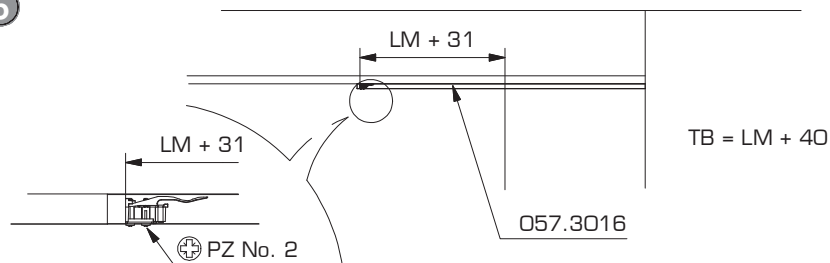
057.3016

min. 2 x LM + 50

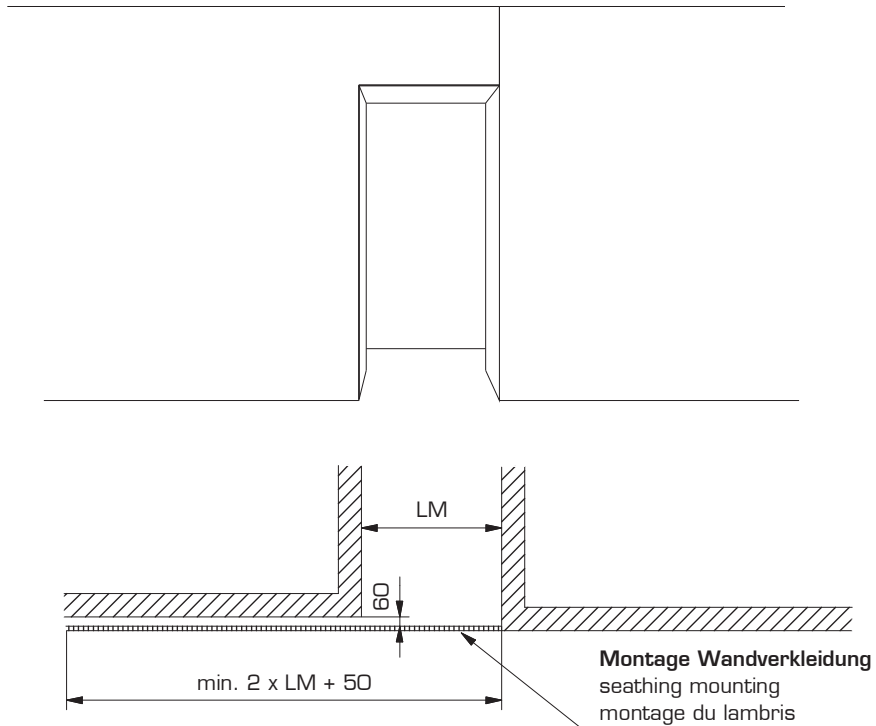
1



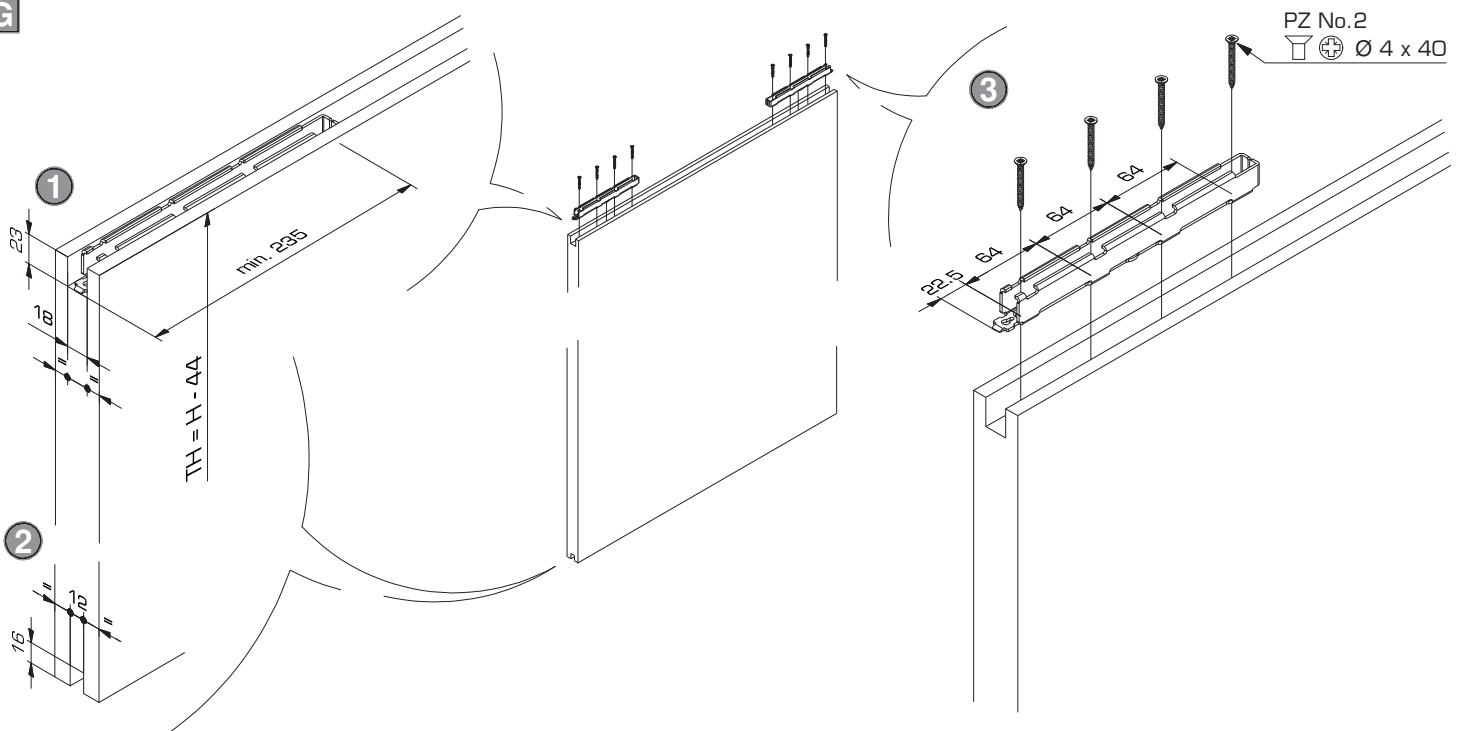
5



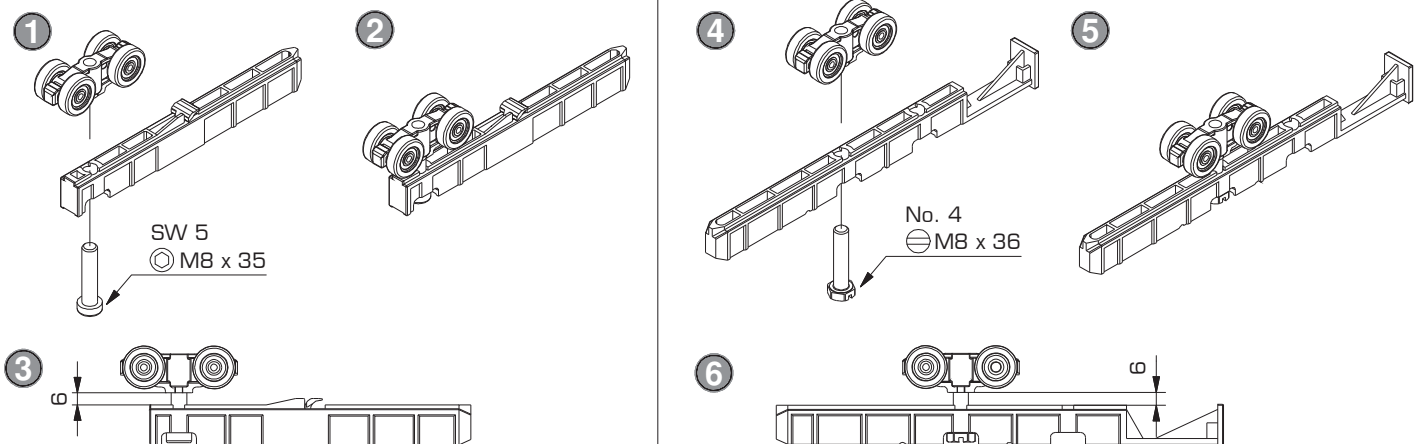
F



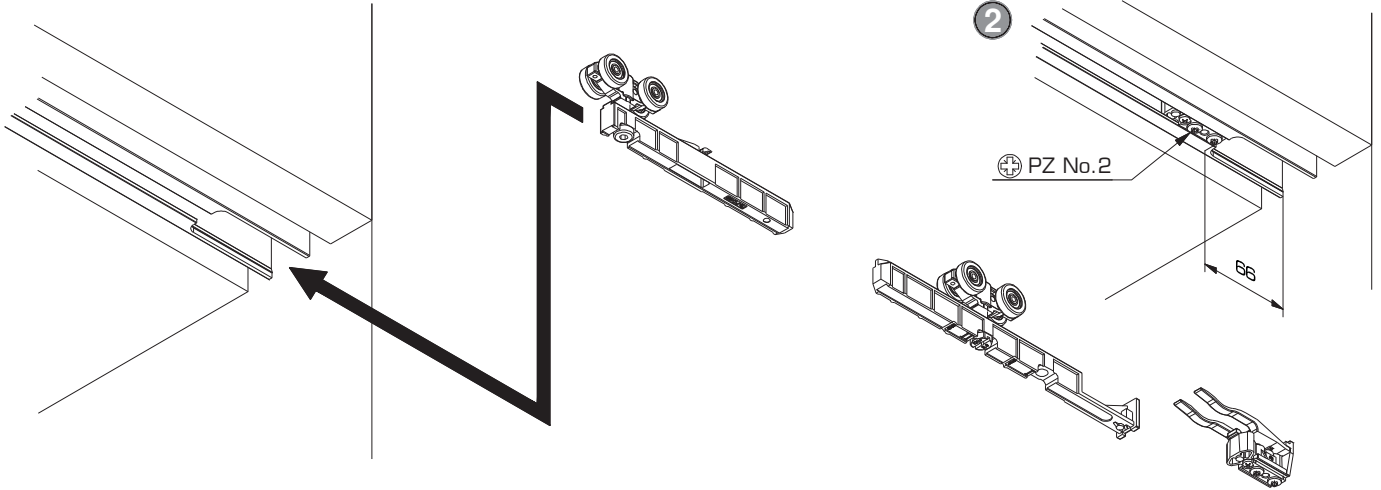
G



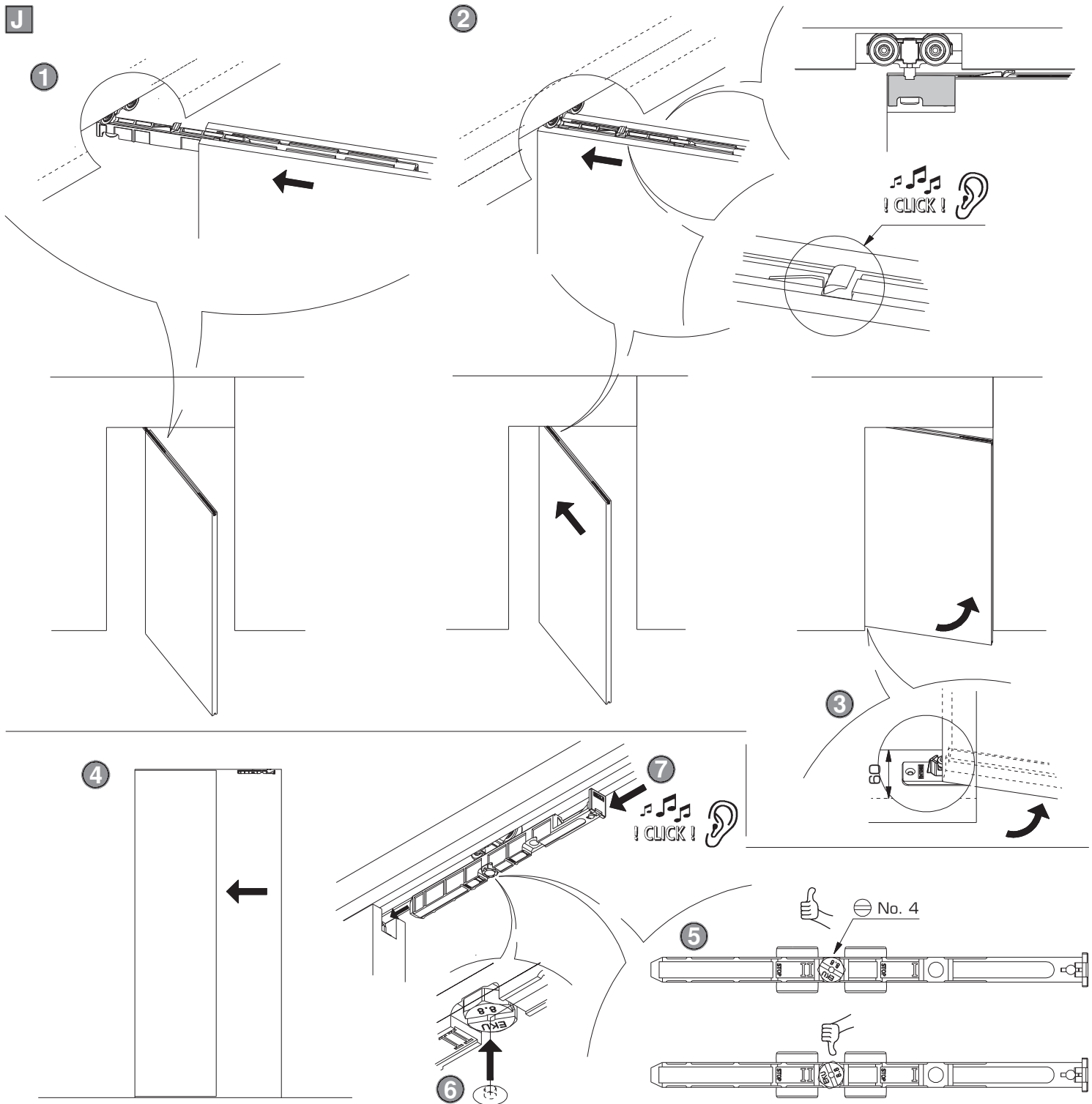
H



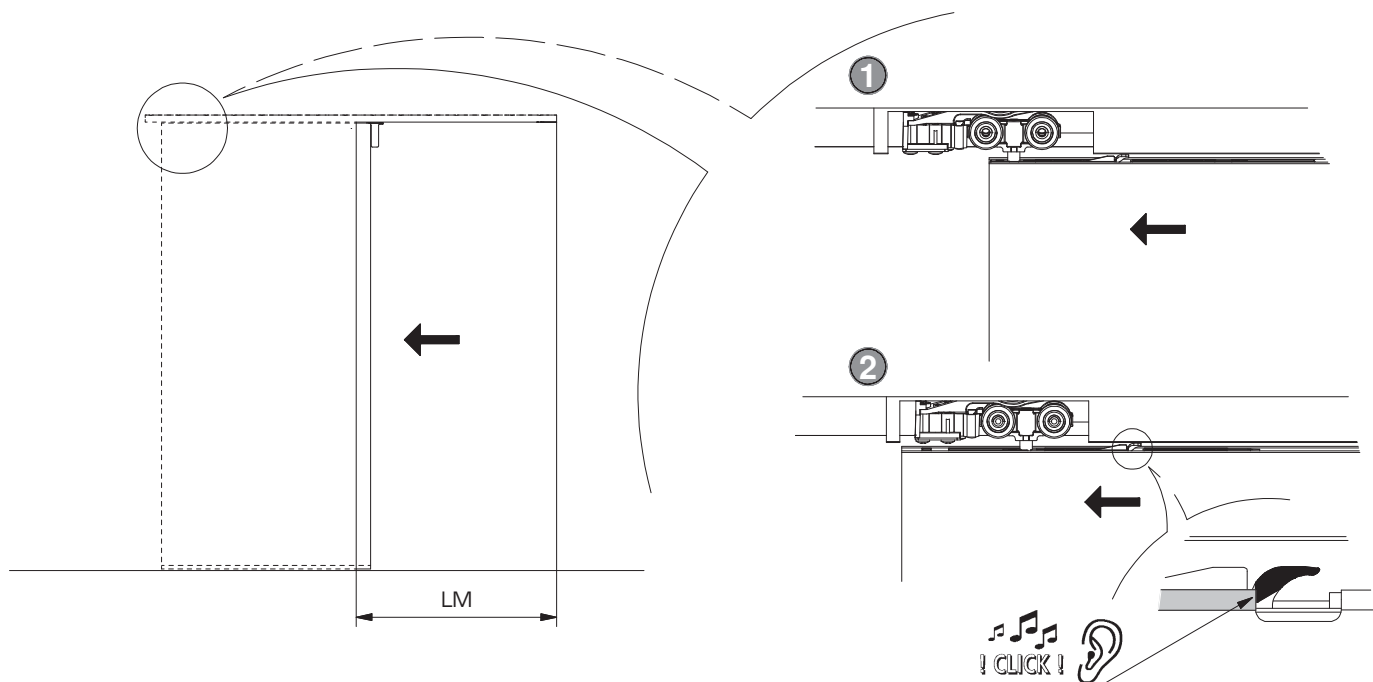
I 1



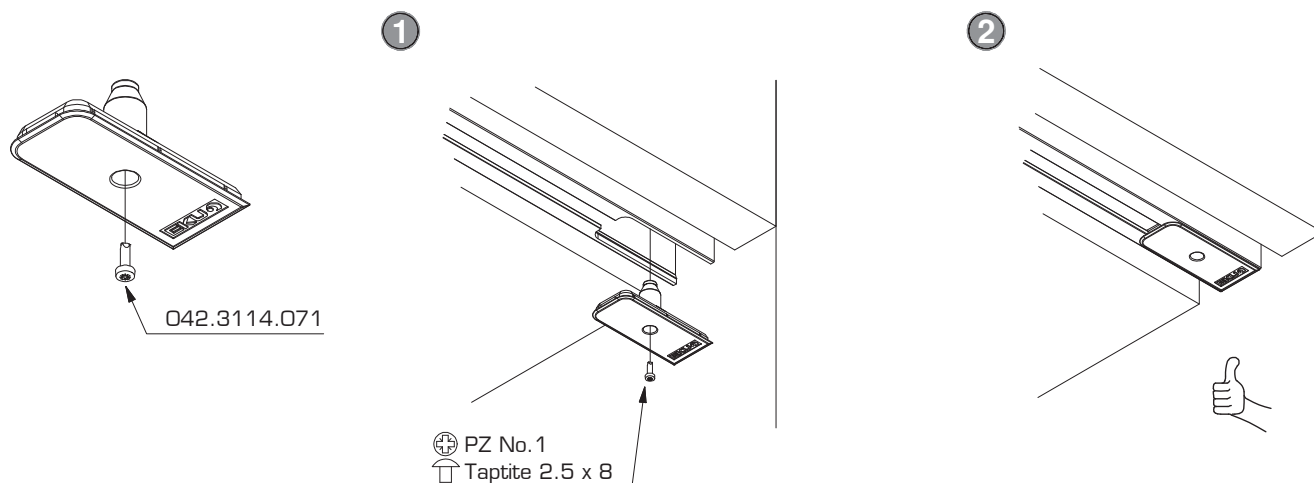
J



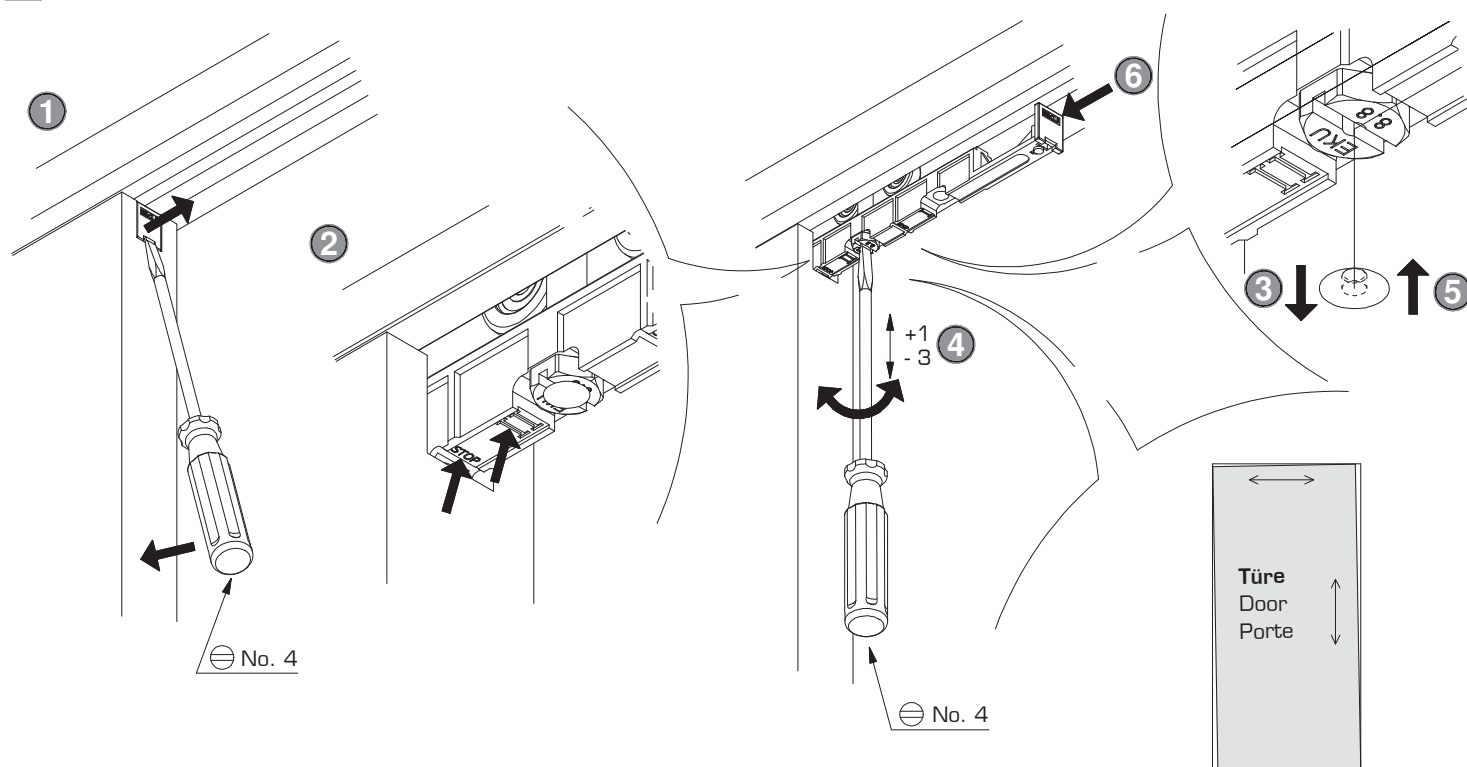
K



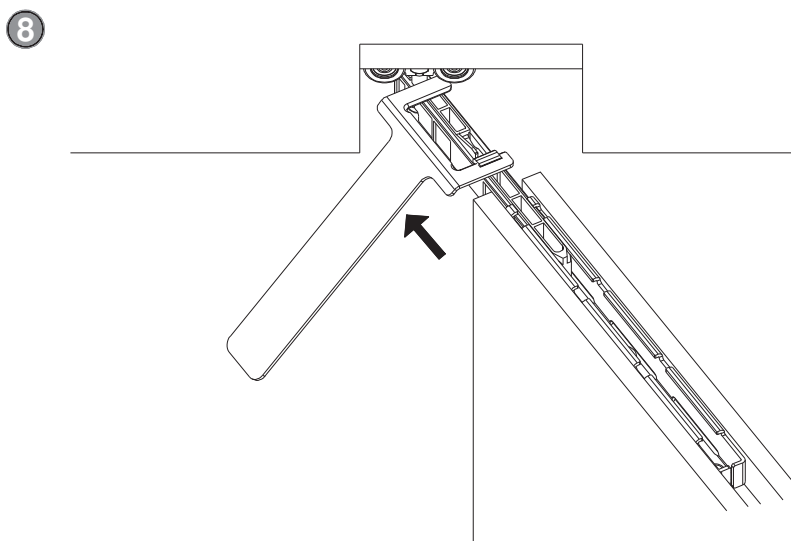
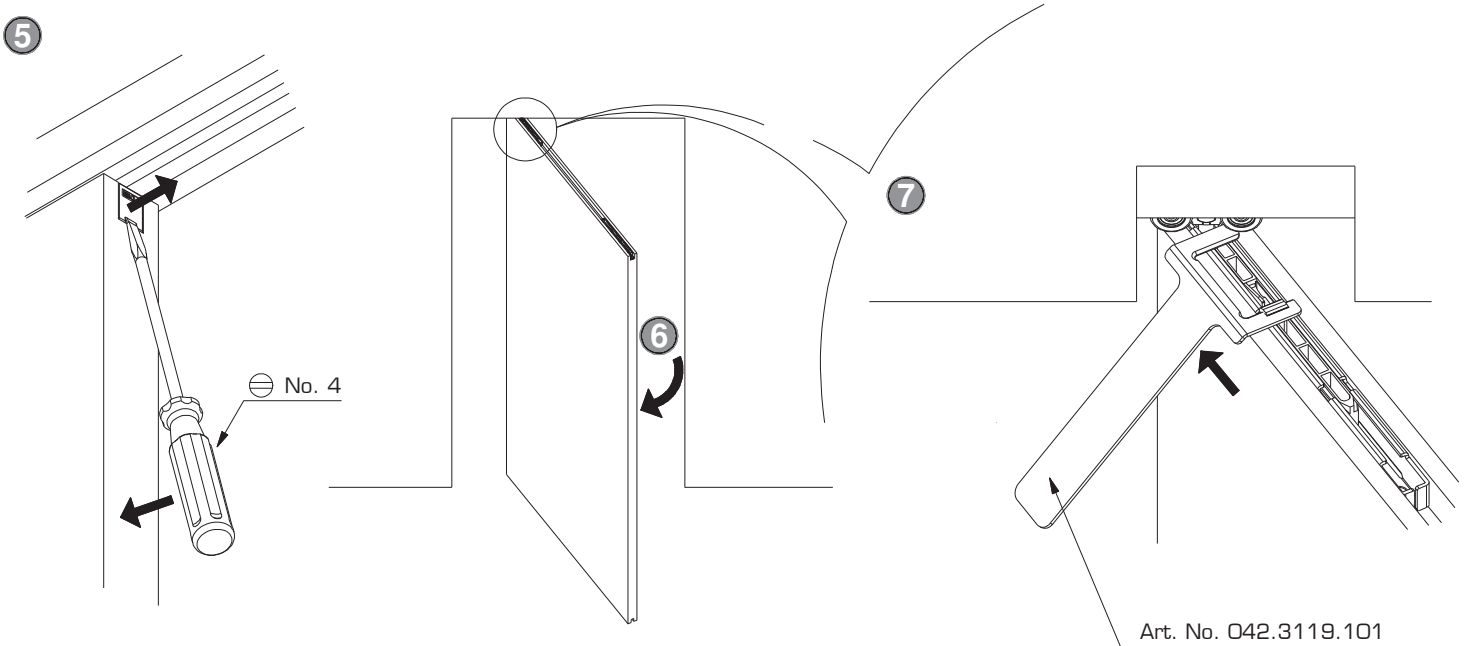
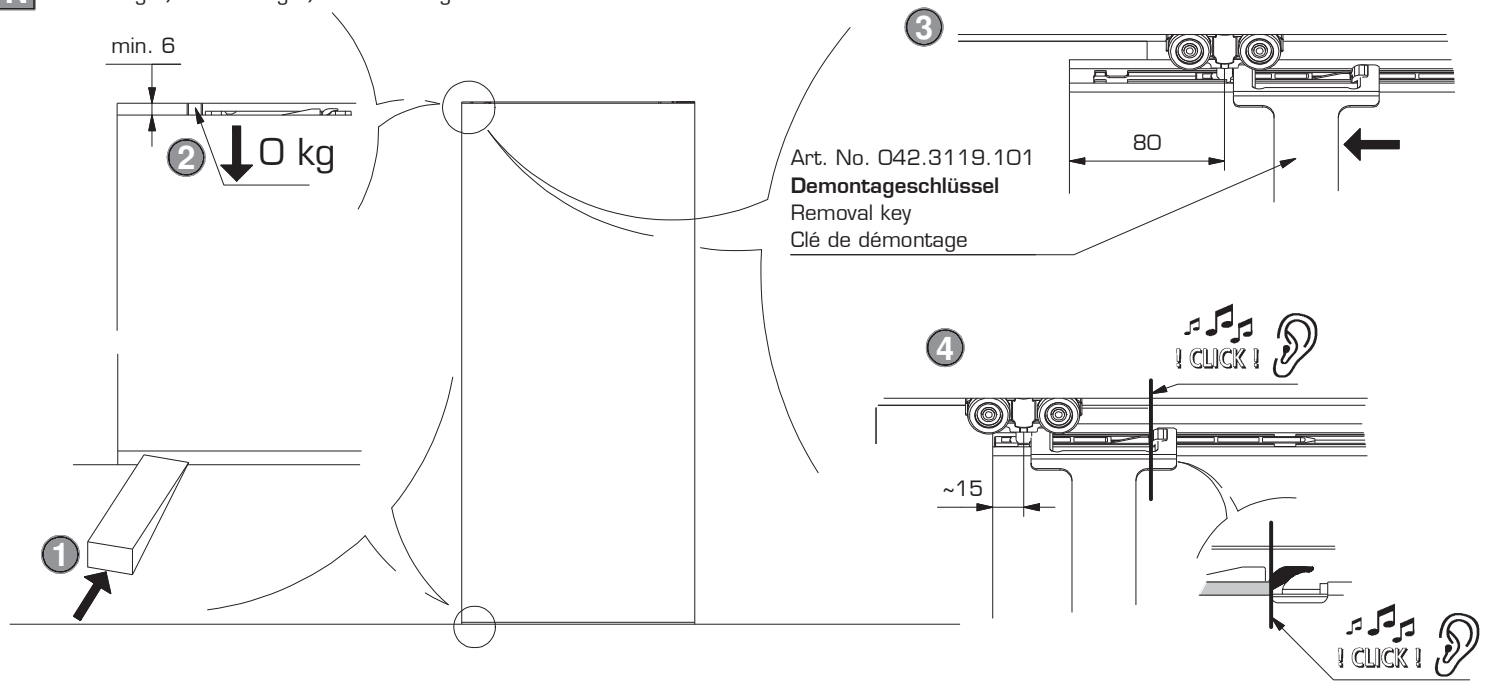
L



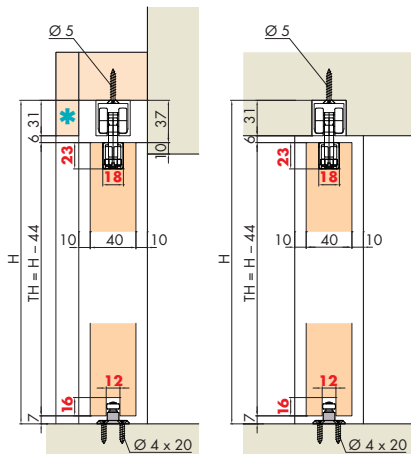
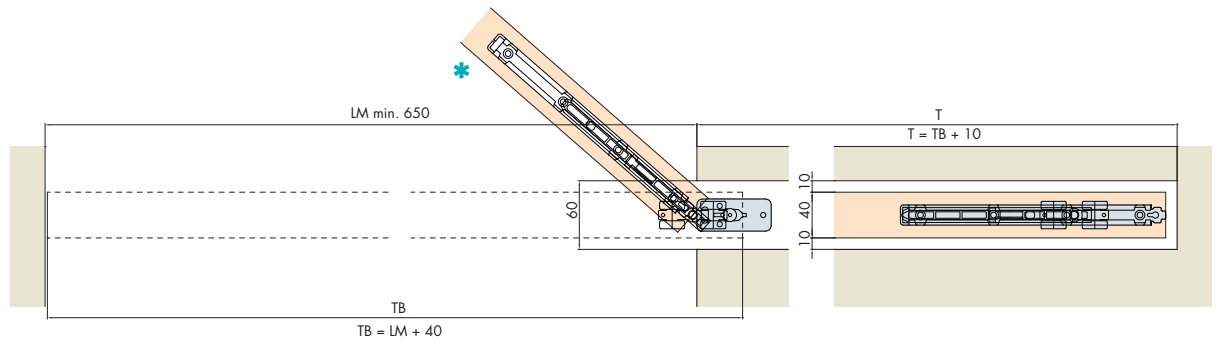
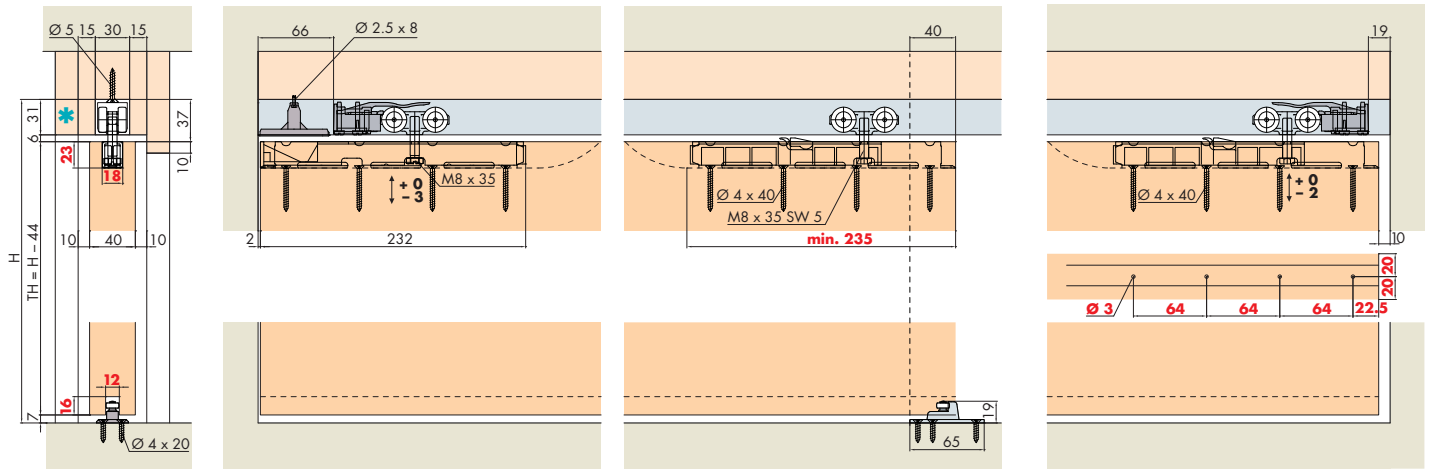
M



N Demontage / Démontage / Dismounting



Einbaubeispiele / Mounting examples / Exemples de montage



- * **Für das Ein- und Ausschwenken darf eine Blende bis max. an die Unterkante der Schiene reichen.**
At least one of the panels must end at the lower edge of the running track in order to be able to swivel the door inwards and outwards.
Pour que le pivotement puisse s'effectuer, un cache pourra au maximum atteindre le bord inférieur du rail.