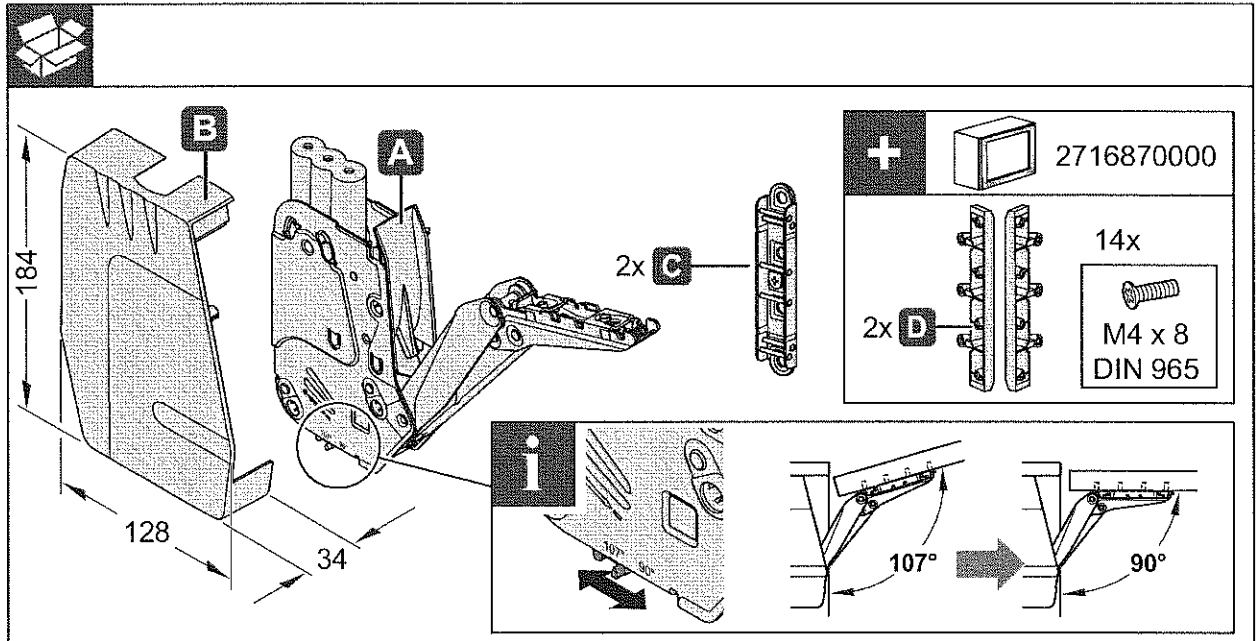




FREEflap forte



<http://support.kesseboehmer.de/freeflap>

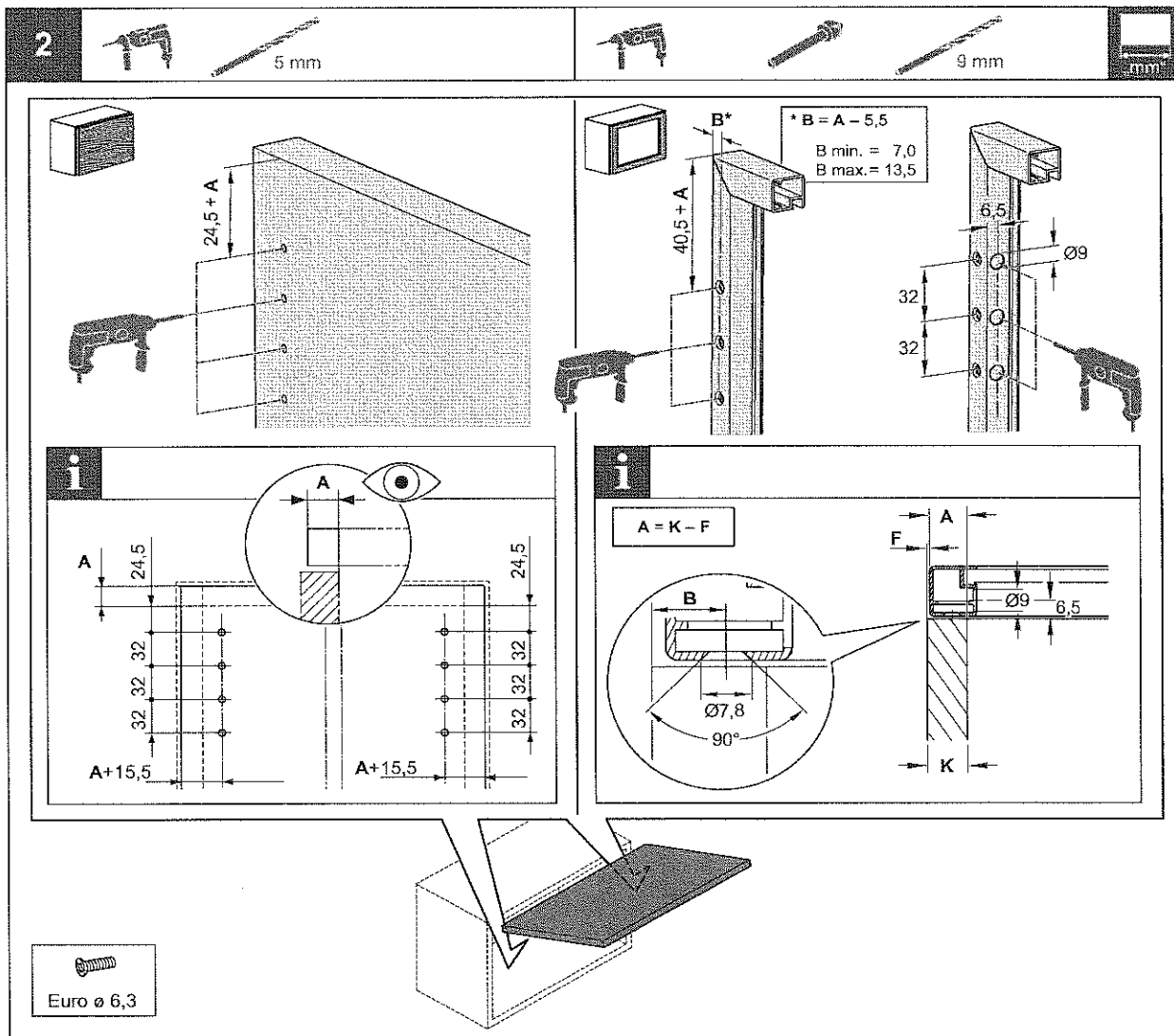
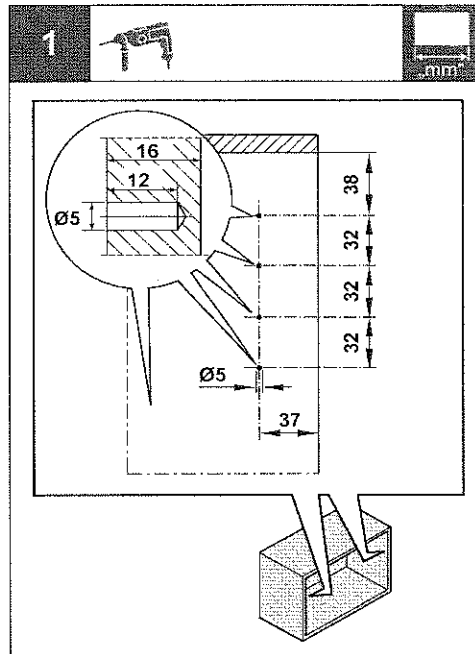
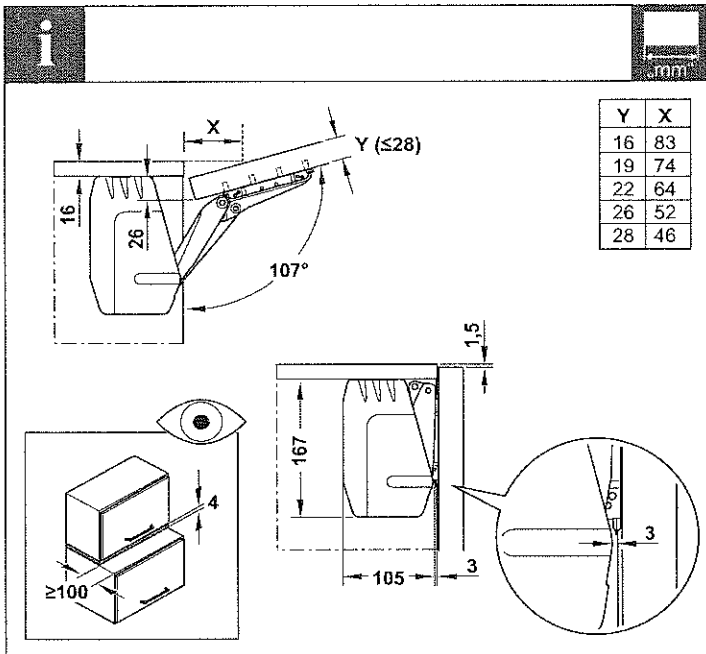


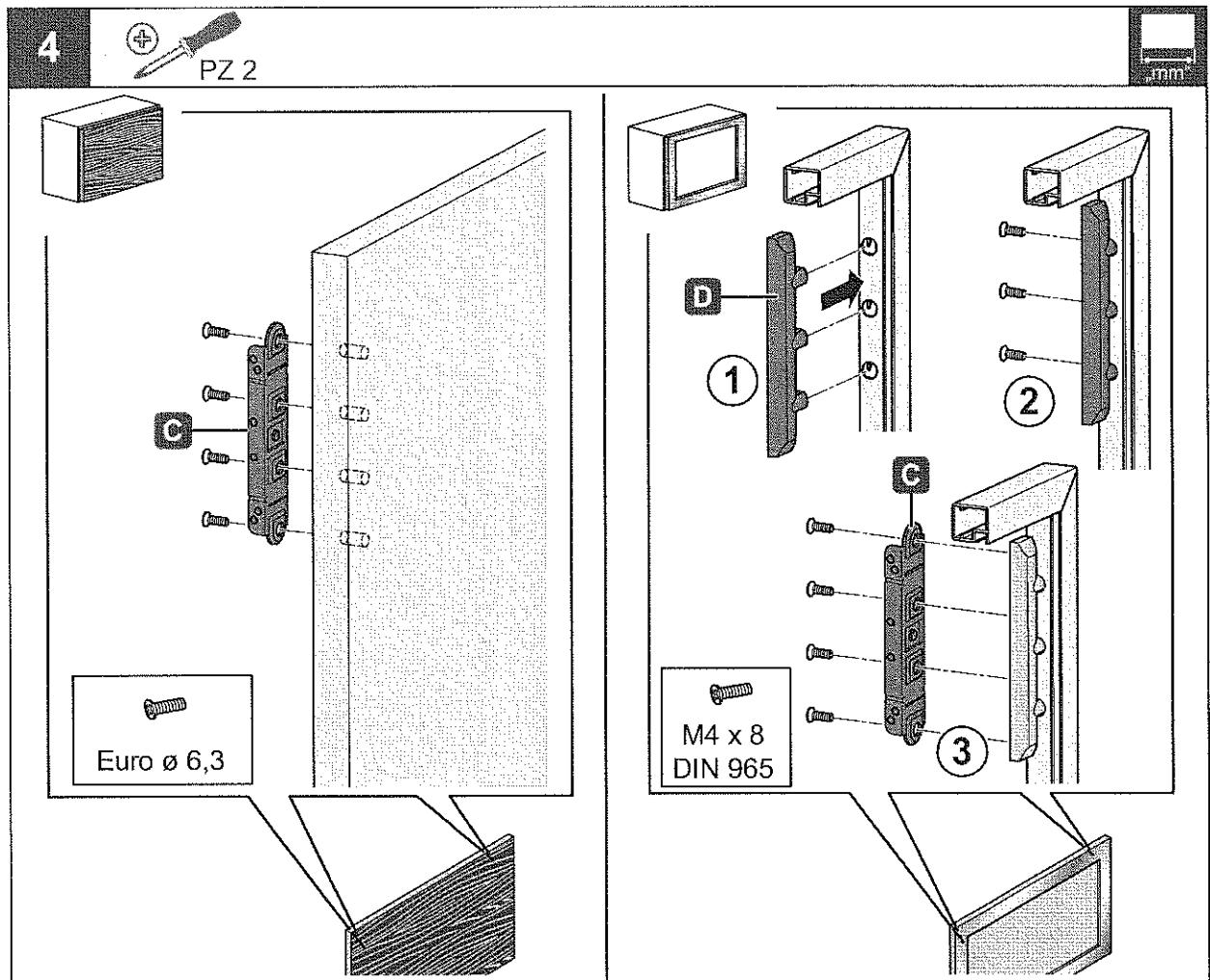
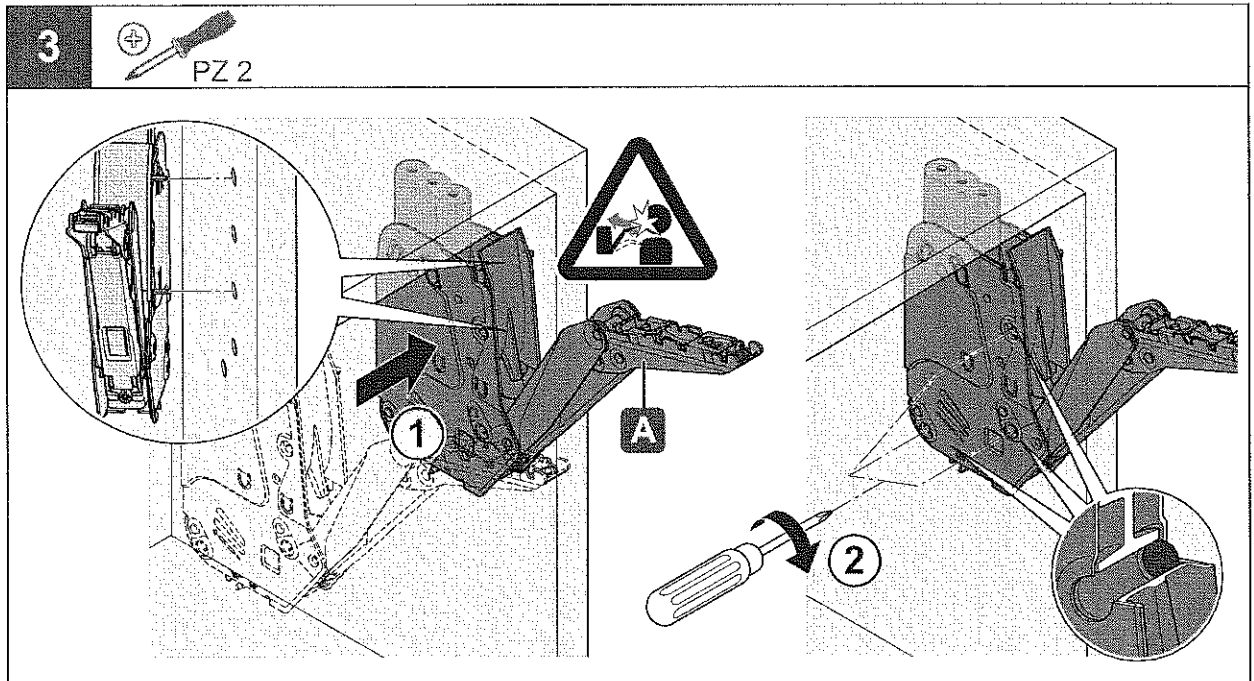
i	mm	kg max!	7035	9966
	350	D	5,2 - 11,0	271664 9966
		E	6,7 - 14,3	271665 9966
		F	10,1 - 21,4	271666 9966
		G	13,5 - 27,3	271667 9966
	400	D	4,7 - 9,6	271664 9966
		E	5,9 - 12,4	271665 9966
		F	8,9 - 18,6	271666 9966
		G	11,8 - 23,3	271667 9966
	450	D	4,1 - 8,4	271664 9966
		E	5,2 - 10,9	271665 9966
		F	7,8 - 16,3	271666 9966
		G	10,4 - 20,5	271667 9966
	500	D	3,7 - 7,5	271664 9966
		E	4,7 - 9,7	271665 9966
		F	7,0 - 14,6	271666 9966
		G	9,2 - 18,3	271667 9966
	550	D	3,3 - 6,8	271664 9966
		E	4,2 - 8,8	271665 9966
		F	6,3 - 13,2	271666 9966
		G	8,3 - 16,5	271667 9966
	600	D	3,0 - 6,2	271664 9966
		E	3,8 - 8,0	271665 9966
		F	5,7 - 12,0	271666 9966
		G	7,6 - 15,0	271667 9966
	650	D	2,6 - 5,6	271664 9966
		E	3,4 - 7,3	271665 9966
		F	5,3 - 11,0	271666 9966
		G	6,9 - 14,0	271667 9966

4025520000

12.0001.010.381.0000.00

HDE 31.10.2013

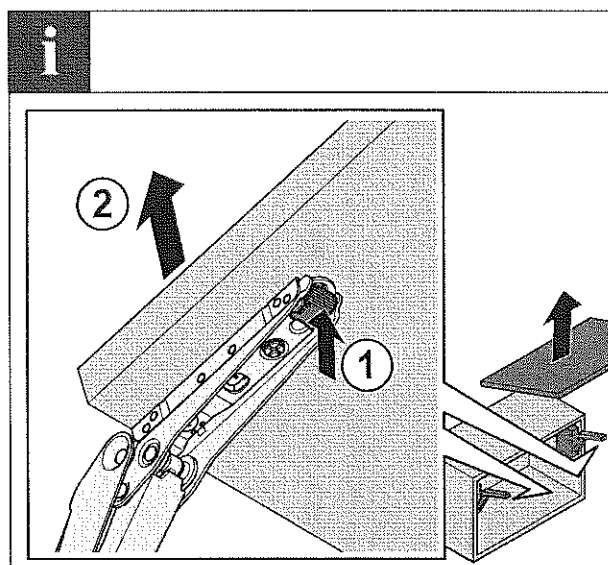
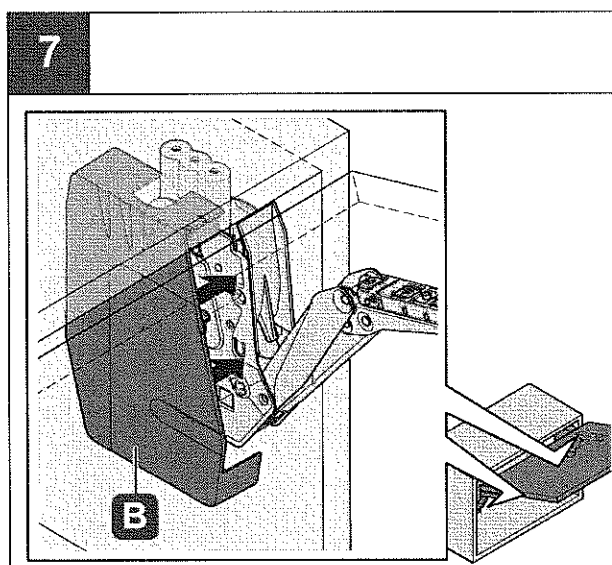
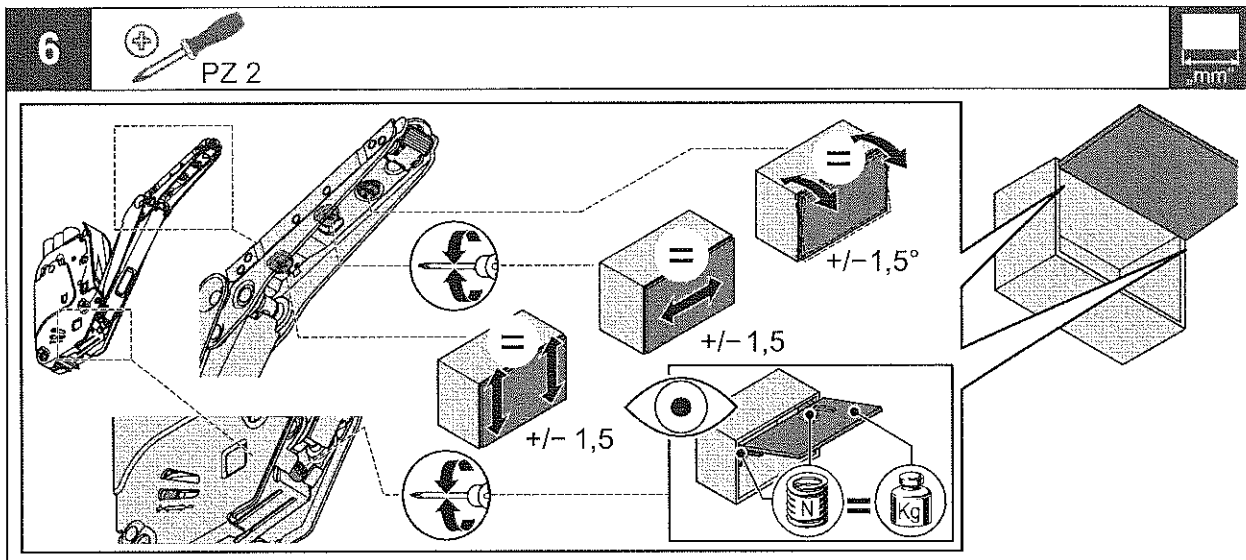
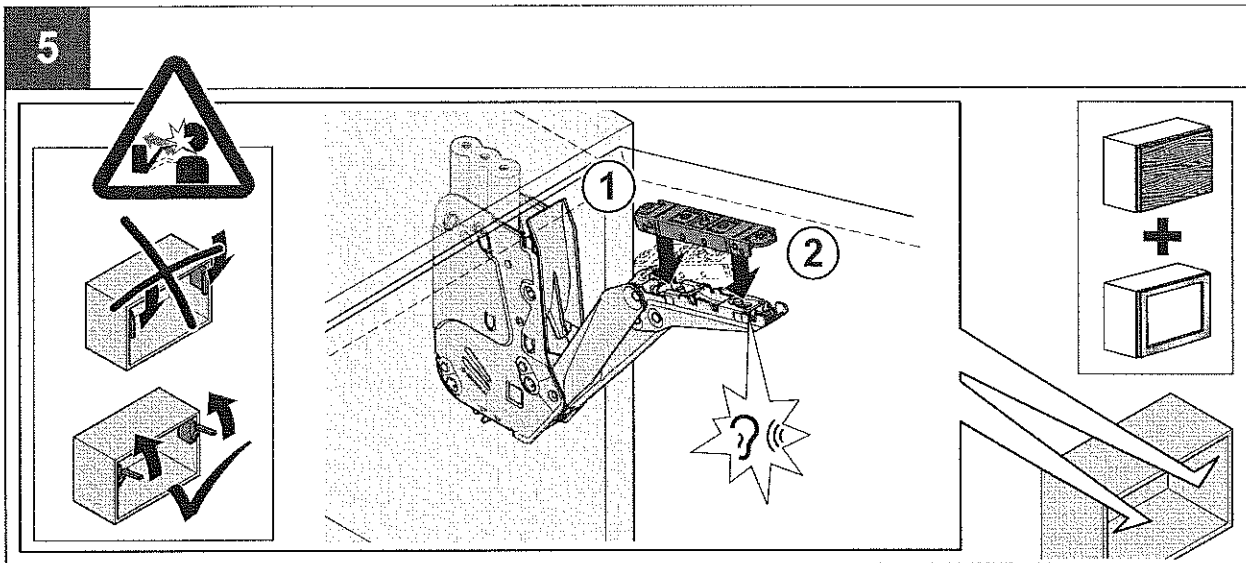




4025520000

12.0001.010.381.0000.00

HDE 31.10.2013



4025520000

12.0001.010.381.0000.00

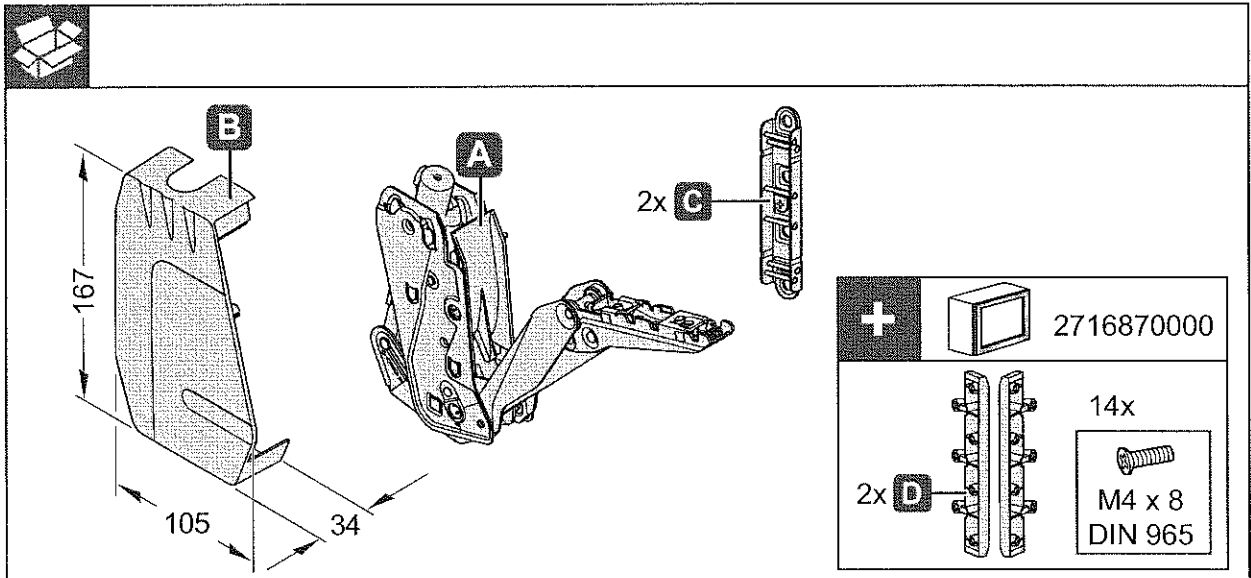
HDE 31.10.2013



FREEflap mini



<http://support.kesseboehmer.de/freeflap>

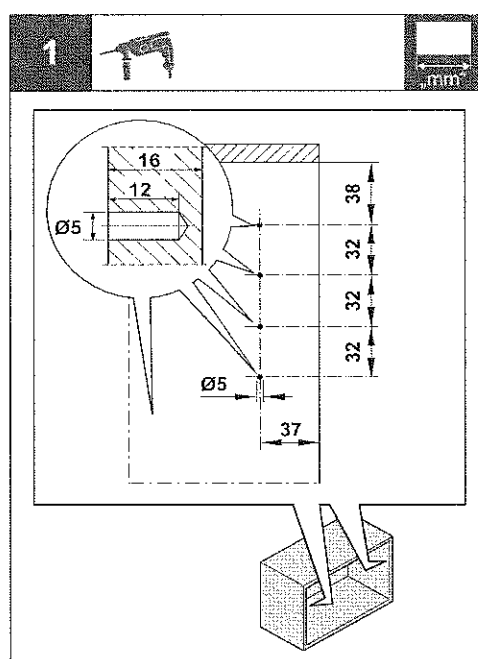


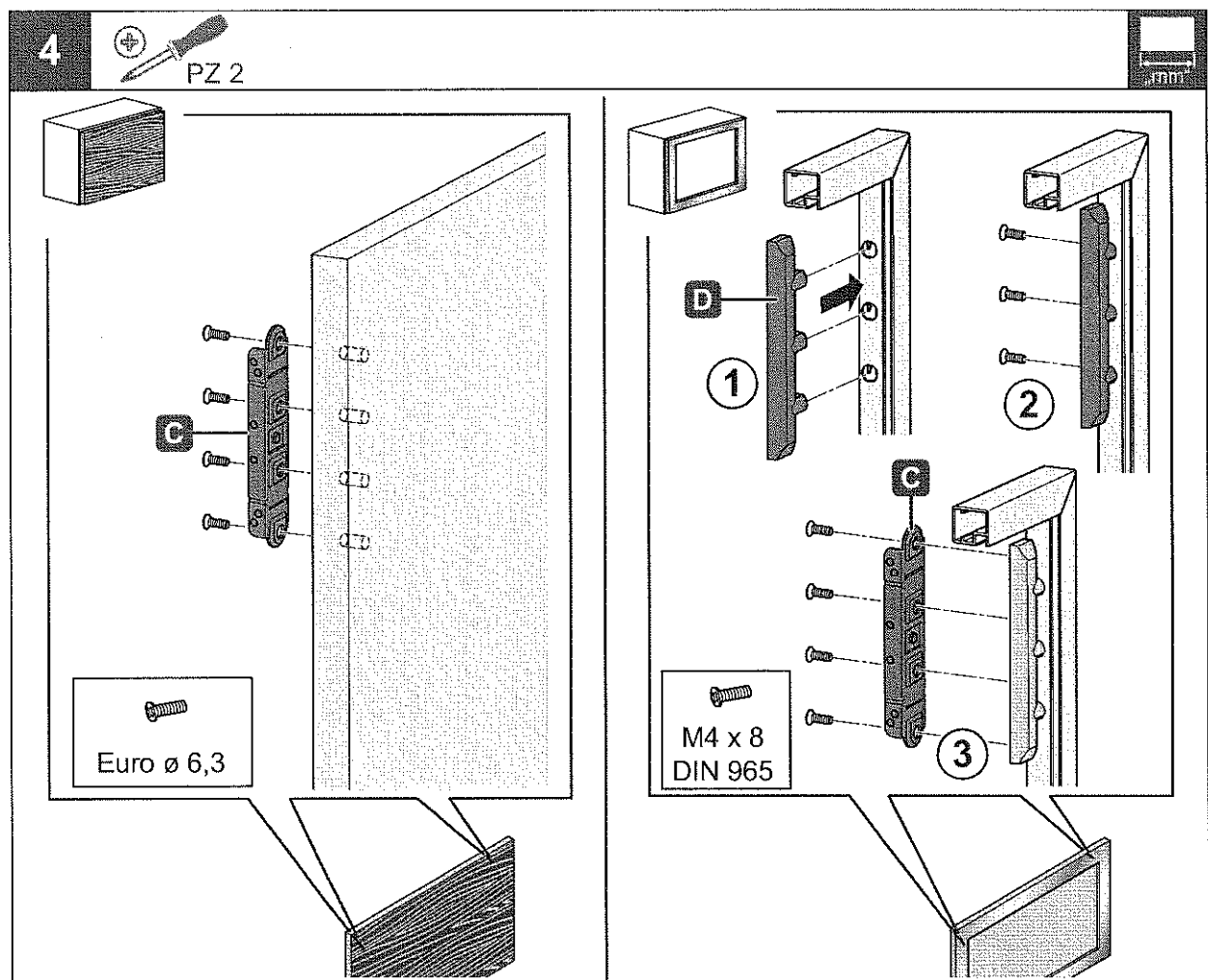
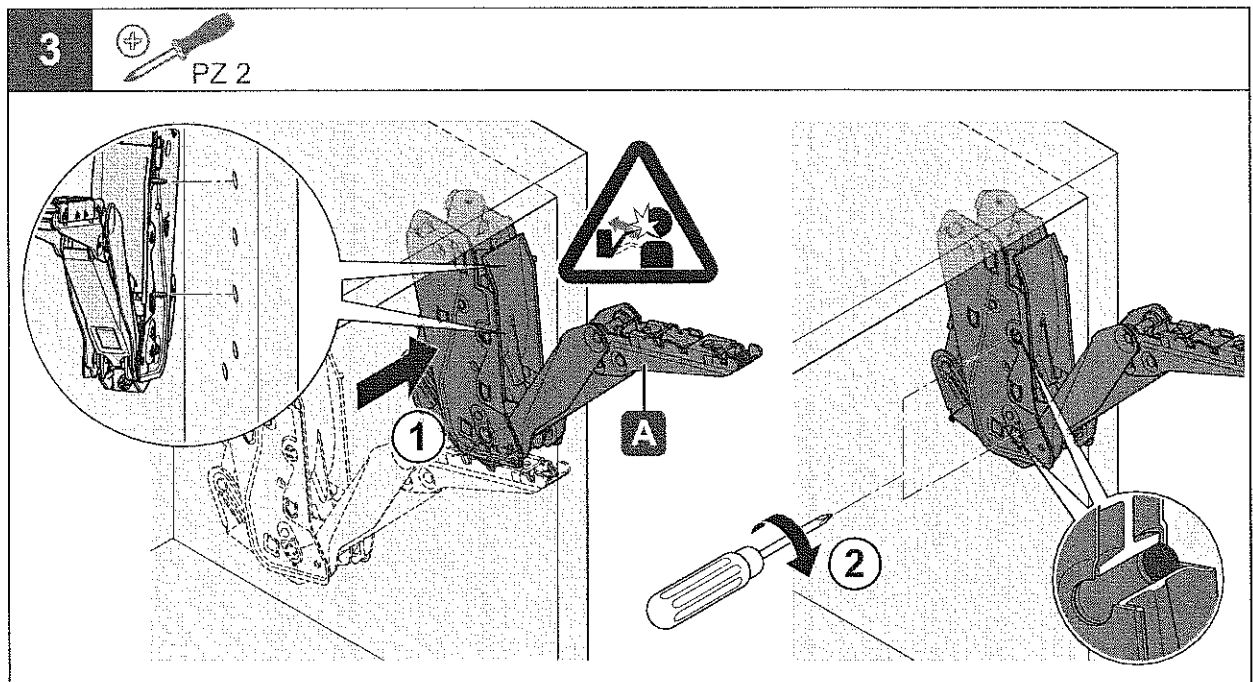
i					
 	200	A	1,7 - 4,6	2716617035	2716619966
		B	3,6 - 7,9	2716627035	2716629966
		C	6,8 - 14,7	2716637035	2716639966
	225	A	1,5 - 4,1	2716617035	2716619966
		B	3,1 - 7,1	2716627035	2716629966
		C	6,0 - 13,1	2716637035	2716639966
	250	A	1,3 - 3,8	2716617035	2716619966
		B	2,9 - 6,4	2716627035	2716629966
		C	5,4 - 11,8	2716637035	2716639966
	275	A	1,2 - 3,3	2716617035	2716619966
		B	2,5 - 5,7	2716627035	2716629966
		C	4,8 - 10,6	2716637035	2716639966
	300	A	1,1 - 3,1	2716617035	2716619966
		B	2,4 - 5,1	2716627035	2716629966
		C	4,4 - 9,6	2716637035	2716639966
	325	A	1,0 - 2,8	2716617035	2716619966
		B	2,1 - 4,6	2716627035	2716629966
		C	4,0 - 8,8	2716637035	2716639966
	350	A	0,9 - 2,6	2716617035	2716619966
		B	2,0 - 4,2	2716627035	2716629966
		C	3,7 - 8,1	2716637035	2716639966
	375	A	0,9 - 2,3	2716617035	2716619966
		B	1,9 - 3,8	2716627035	2716629966
		C	3,5 - 7,5	2716637035	2716639966
	400	A	0,8 - 2,1	2716617035	2716619966
		B	1,7 - 3,6	2716627035	2716629966
		C	3,2 - 7,0	2716637035	2716639966
	425	A	0,7 - 1,9	2716617035	2716619966
		B	1,5 - 3,4	2716627035	2716629966
		C	2,9 - 6,5	2716637035	2716639966
	450	A	0,6 - 1,7	2716617035	2716619966
		B	1,4 - 3,2	2716627035	2716629966
		C	2,7 - 6,1	2716637035	2716639966

4025530000

12.0001.010.379.0000.00

HDE 31.10.2013

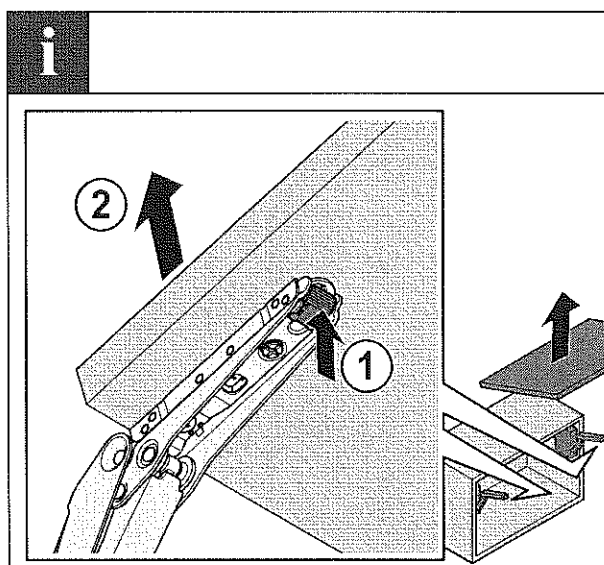
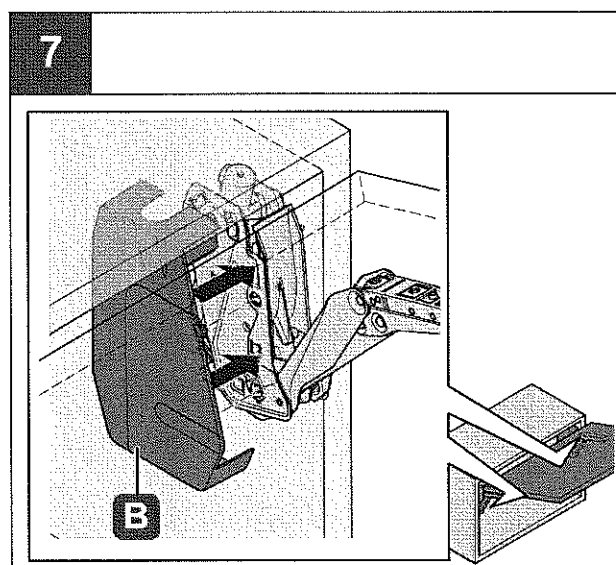
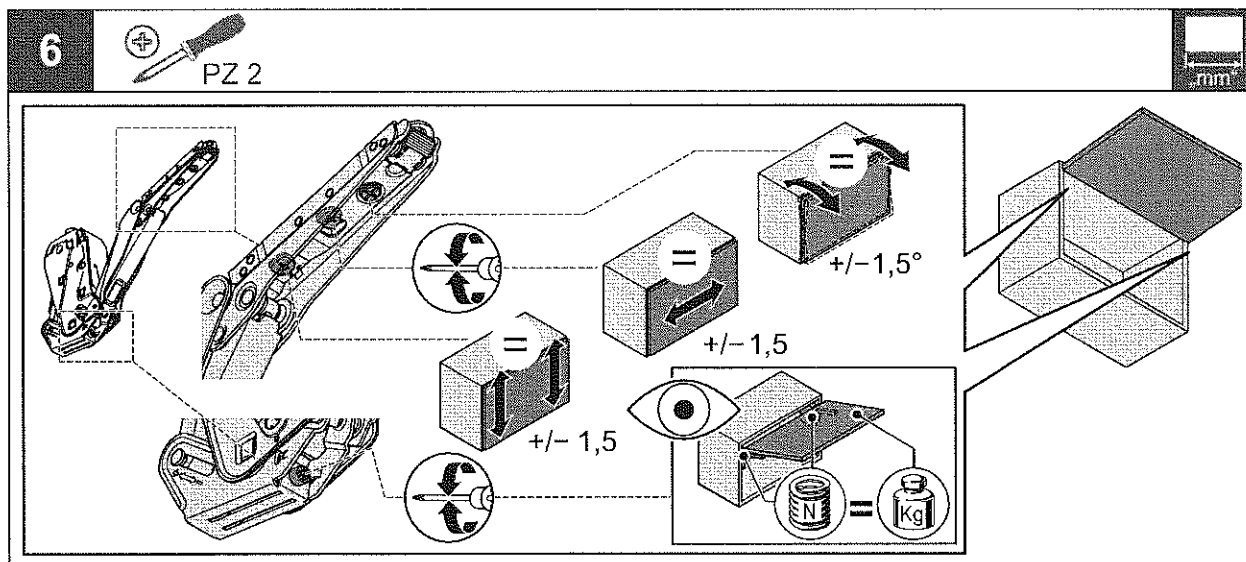
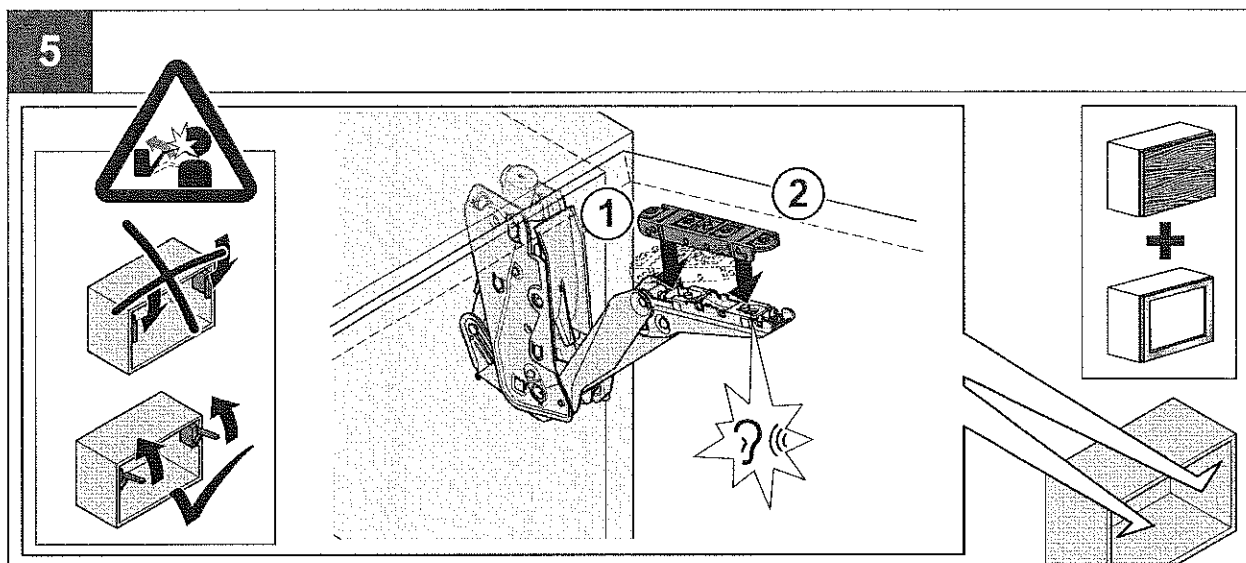




4025530000

12.0001.010.379.0000.00

HDE 24.08.2012



4025530000

12.0001.010.379.0000.00

HDE 24.08.2012