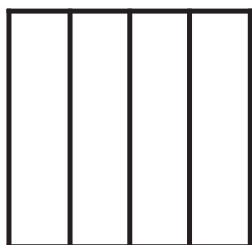
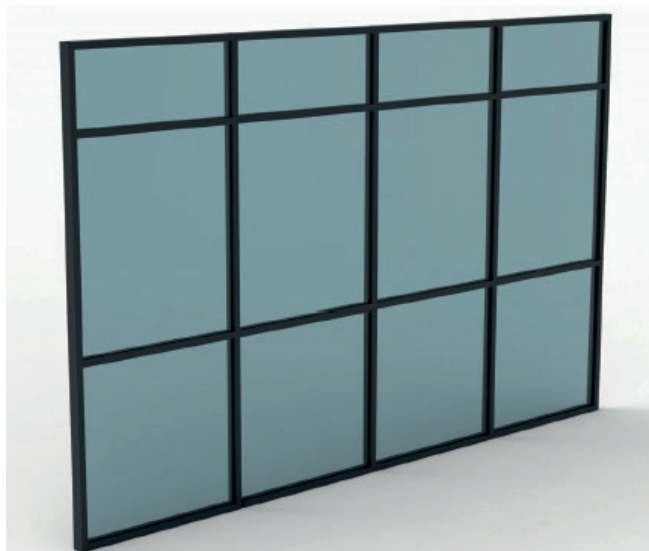


CLOISON

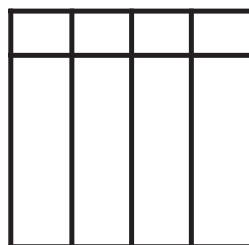
CLOISON - VERRIERE D'INTERIEUR

PRÉSENTATION GÉNÉRALE

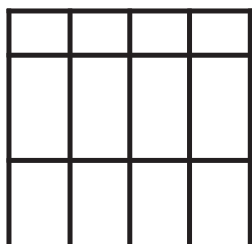
Configurations



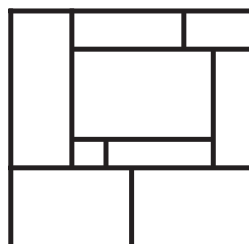
Cloison sans traverse



Cloison avec 1 traverse horizontale

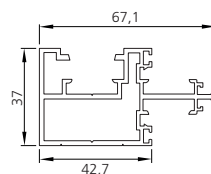


Cloison avec 2 traverses horizontales



Cloison avec diverses traverses

Profils



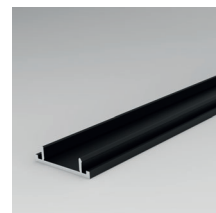
Profil cloison



Profil parclose finition



Profil parclose intermédiaire

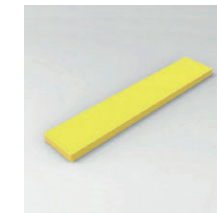


Profil de finition

Accessoires



Equerre 100 x 100



Cale de vitrage 4 mm jaune



Clip







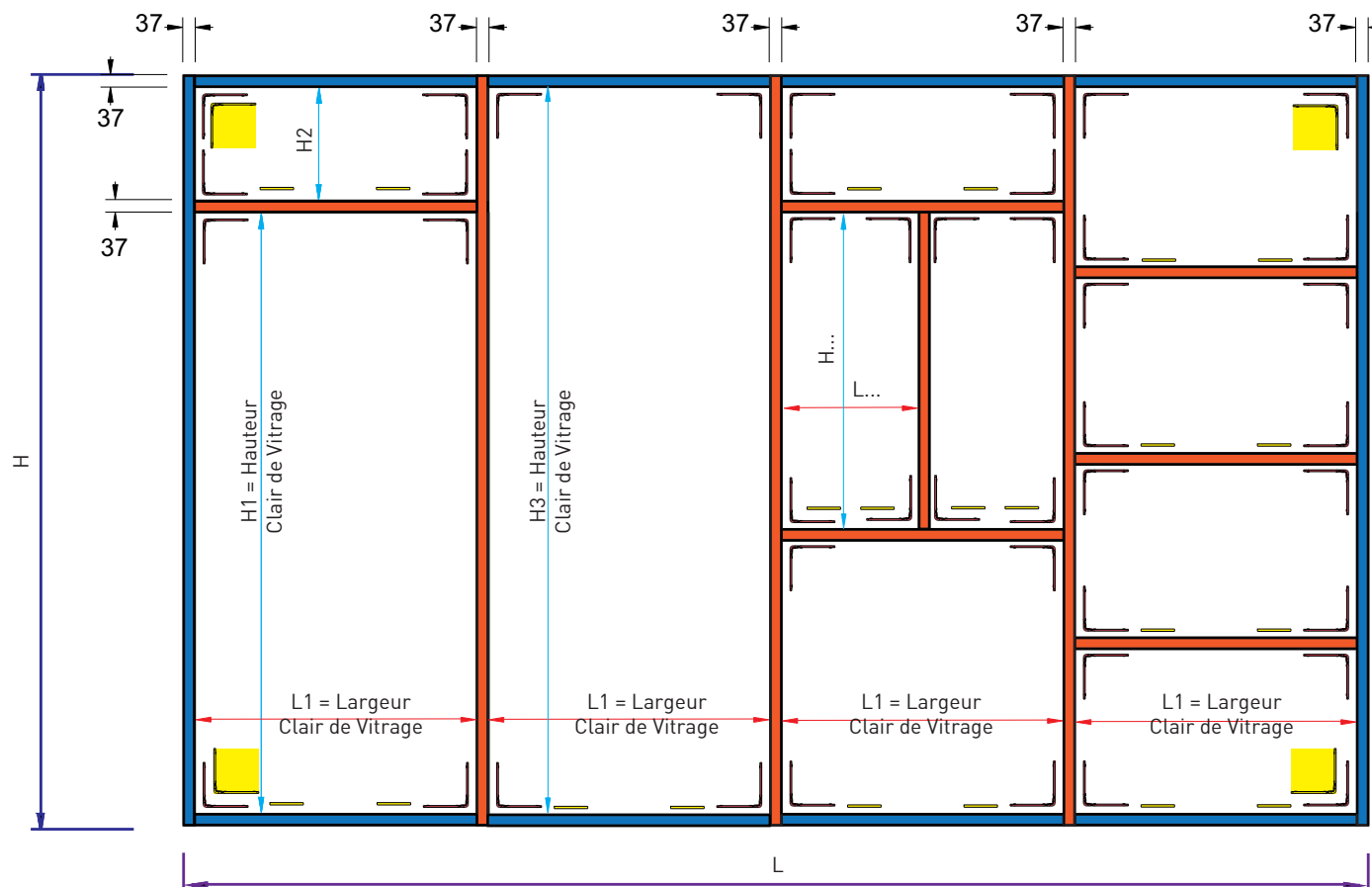
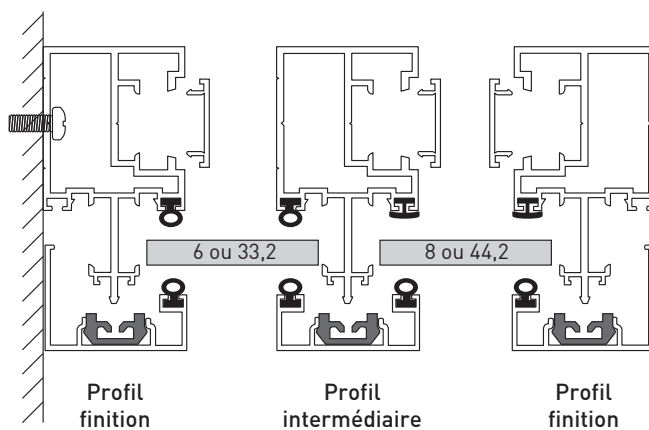
Joint plat
joint bulle

CLOISON

CLOISON - VERRIERE D'INTERIEUR

DESRIPTIF

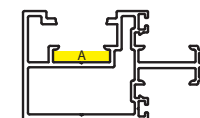
Remplissage	Profil cloison	Parcloses finition et intermédiaire
6 mm ou 33,2 mm	Joint bulle 	Joint bulle 
8 mm ou 44,2	Joint plat 	Joint bulle 



Profil cloison
+ profil finition

Profil cloison
+ profil intermédiaire

Equerre
100 x 100



Cale 4 mm jaune

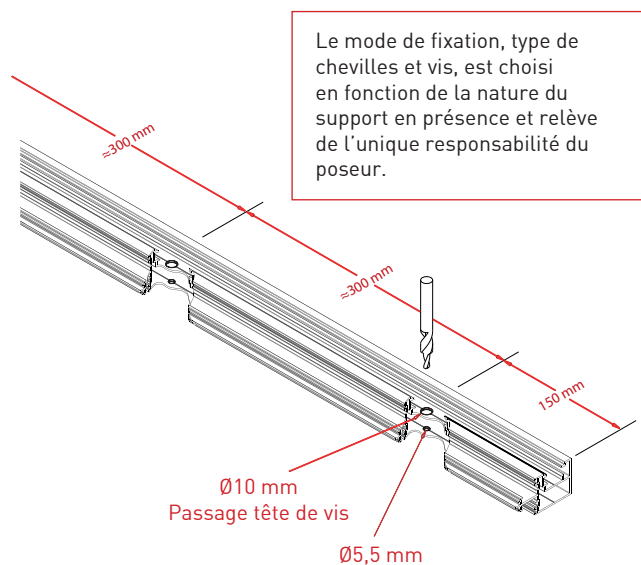
Equerre 100 x 100
Positionnée dans
la rainure A

CLOISON

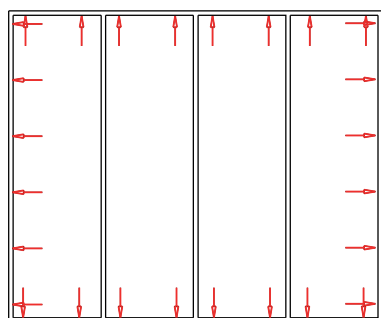
CLOISON - VERRIERE D'INTERIEUR

FIXATION ET ASSEMBLAGE

Perçage cloison

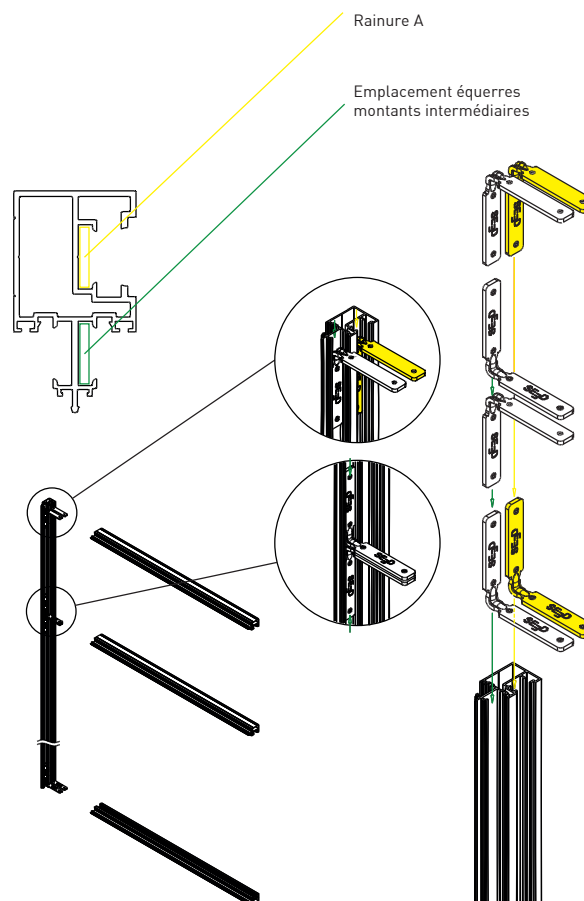


Perçage des trous de fixation de la cloison au foret étagé Ø10 x 5,5 mm.

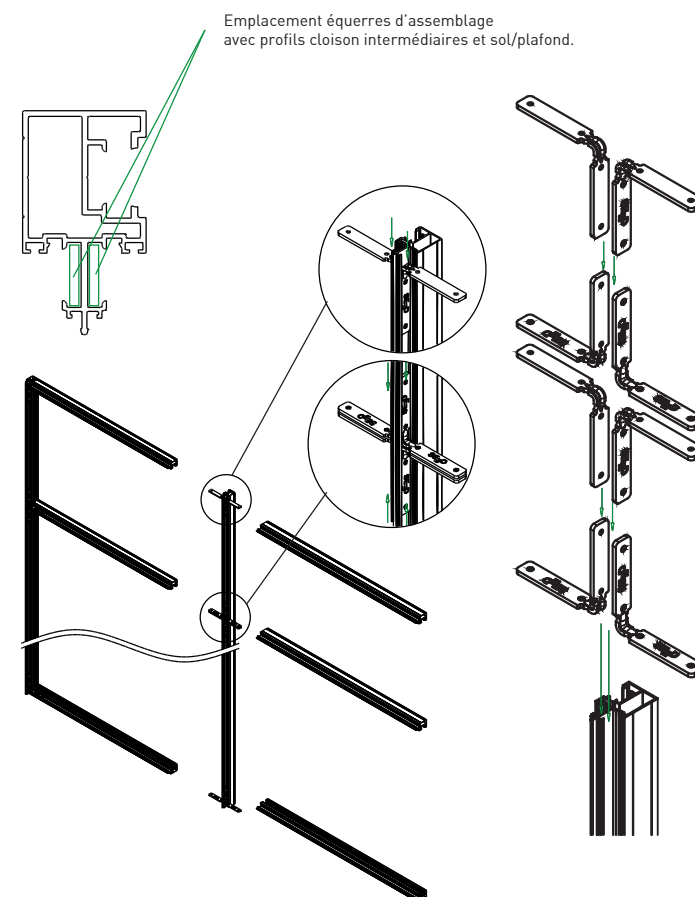


Assemblage montants

Assemblage montant mural ou final



Assemblage montant intermédiaire

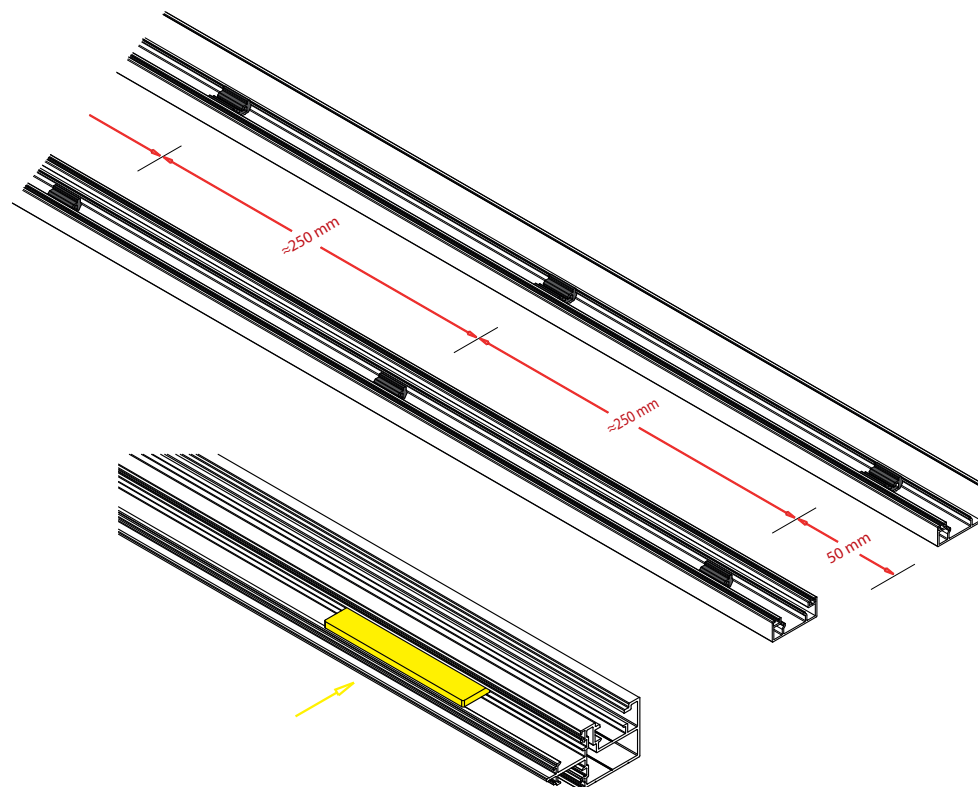


CLOISON

CLOISON - VERRIERE D'INTERIEUR

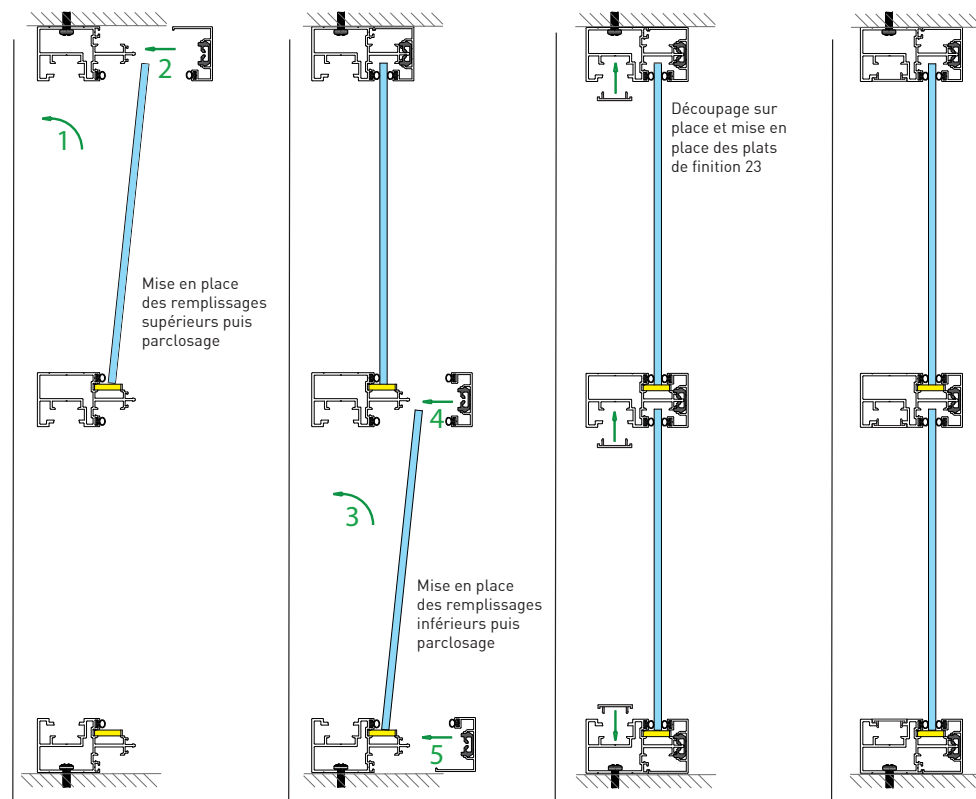
POSE

Mise en place des cales de vitrage et clips



Mise en place des remplissages et parclosage

Cloison vue en coupe de côté.

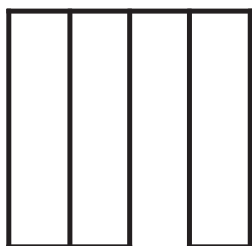


CLOISON

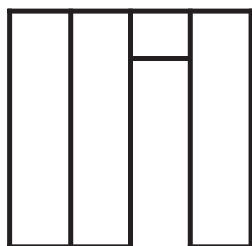
CLOISON AVEC PORTE - VERRIÈRE D'INTERIEUR

PRÉSENTATION GÉNÉRALE

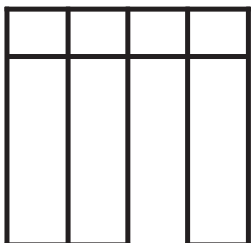
Configurations



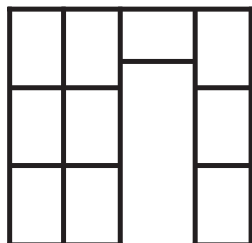
Cloison avec porte
toute hauteur



Cloison avec imposte

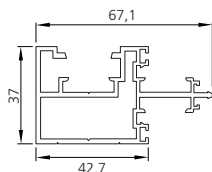


Cloison avec imposte et
traverse horizontale

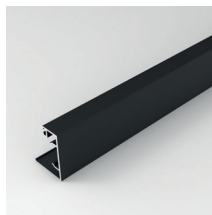


Cloison avec imposte
et diverses traverses

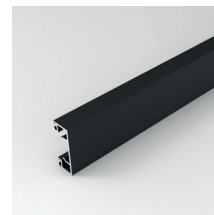
Profils cloison



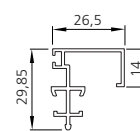
Profil cloison



Profil parclose
finition

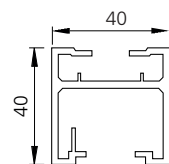
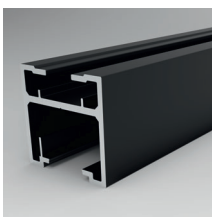


Profil parclose
intermédiaire

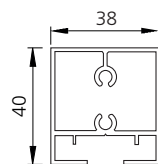
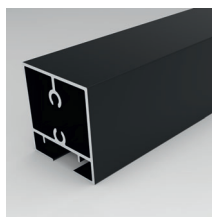


Profil parclose
dormant

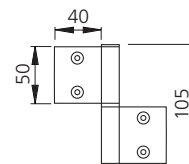
Profils et accessoires porte



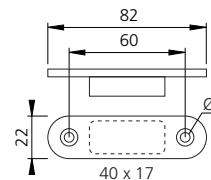
Profil porte



Traverse haute
et basse



Paumelle droite
ou gauche



Loqueteau
magnétique

Accessoires



Clip

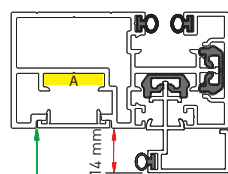
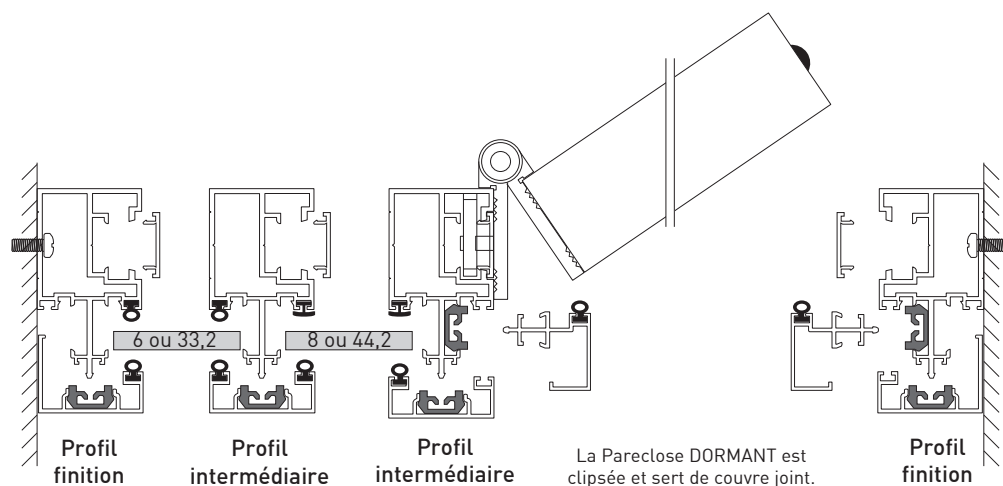


Joint plat
joint bulle

CLOISON

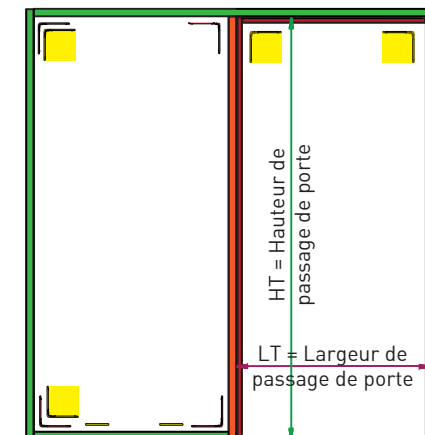
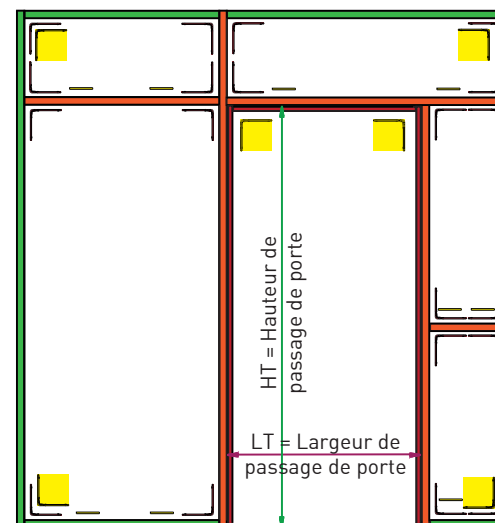
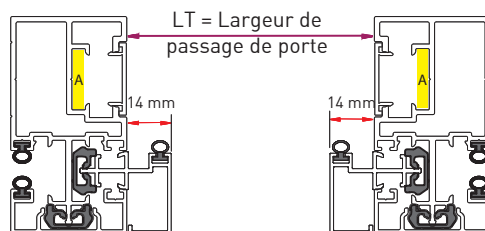
CLOISON AVEC PORTE - VERRIERE D'INTERIEUR





REEMPLISSAGE




HT = Hauteur de passage de porte

Sol



-  Profil cloison + profil finition
-  Profil cloison + Profil intermédiaire
-  Profil cloison + Profil intermédiaire + Profil dormant
-  Equerre 100 x 100

 Cale 4 mm jaune

 Equerre 100 x 100 Positionnée dans la rainure A

CLOISON

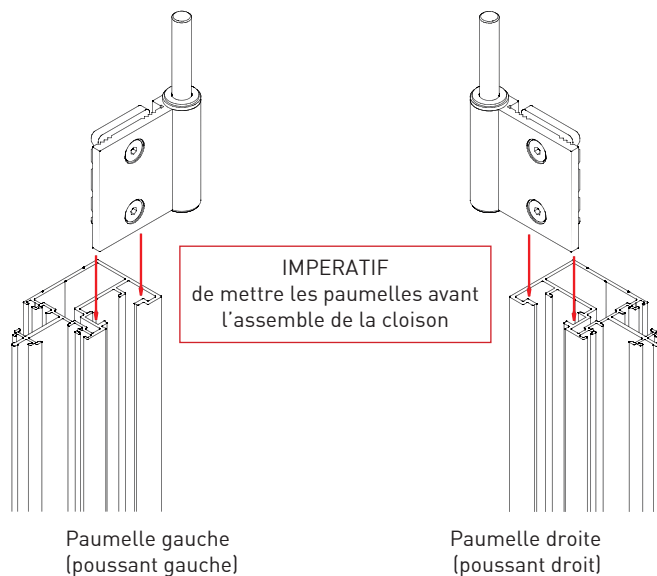
CLOISON AVEC PORTE - VERRIERE D'INTERIEUR

FIXATION ET ASSEMBLAGE

Mise en place paumelle

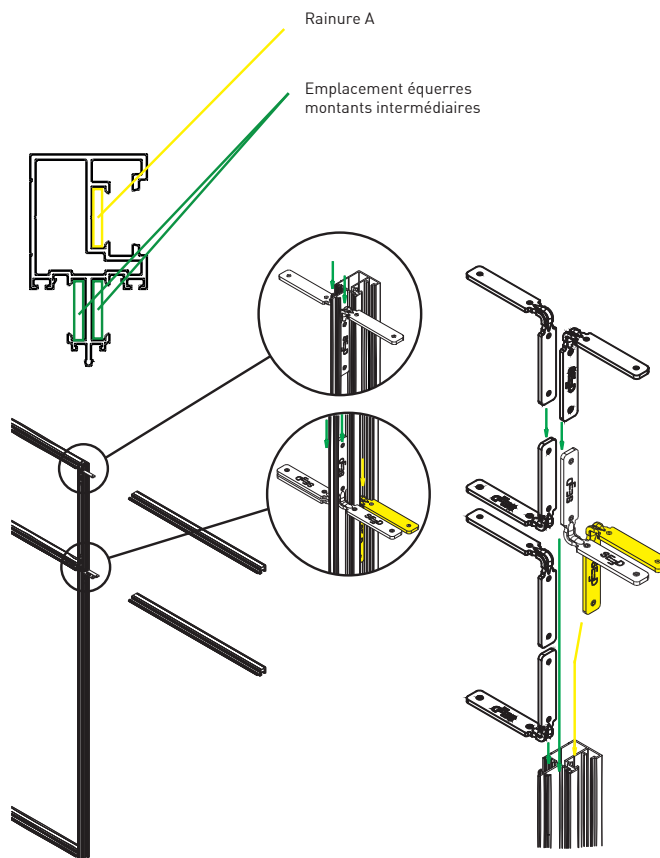
Paumelles :
x3 hauteur porte < 2040 mm
x4 hauteur porte > 2040 mm

IMPERATIF
de mettre les paumelles avant
l'assemble de la cloison

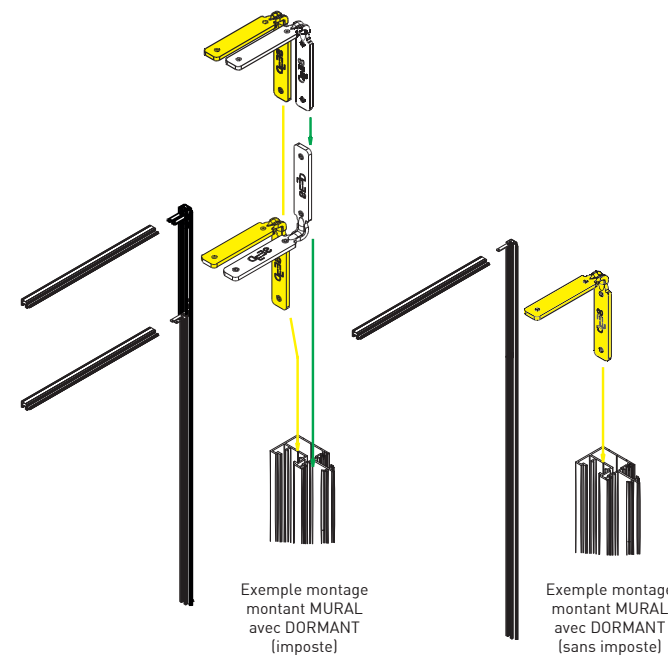


Assemblage montants

Assemblage montant dormant porte



Exemple montage
montant intermédiaire
avec DORMANT

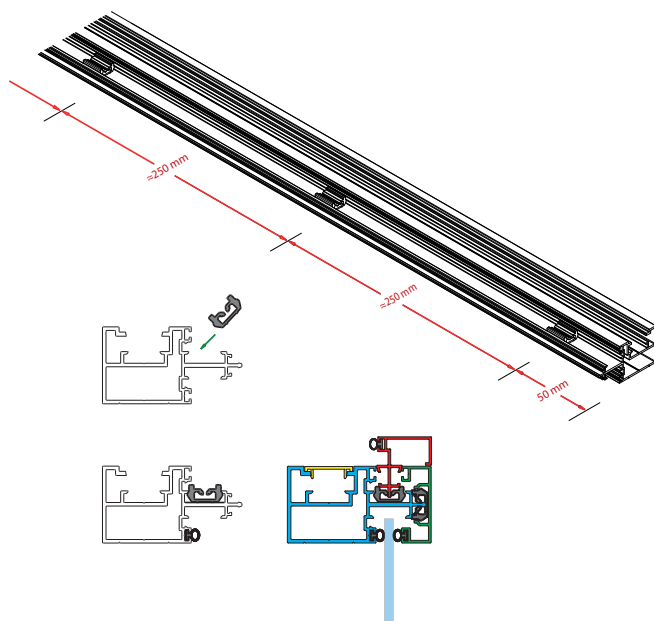


CLOISON

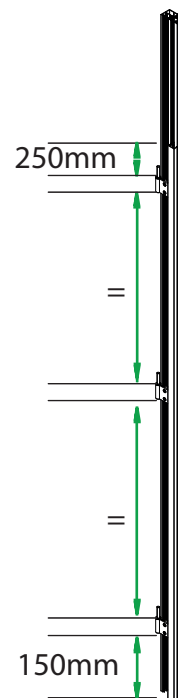
CLOISON AVEC PORTE - VERRIERE D'INTERIEUR

POSE

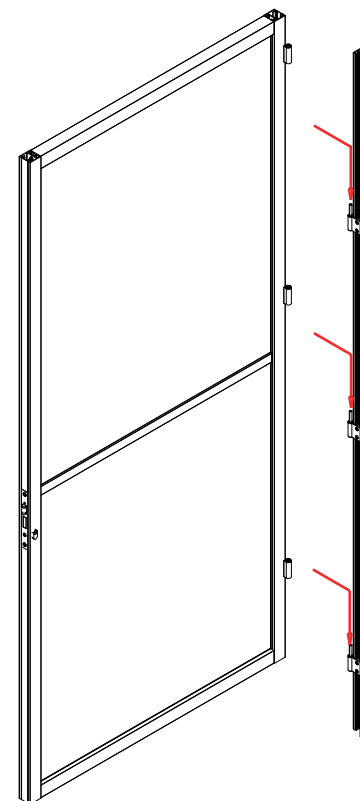
Mise en place des clips



Réglages des paumelles

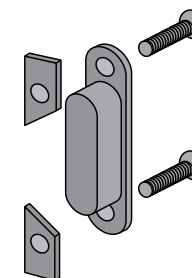


Mise en place de la porte

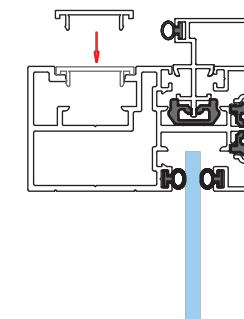


Voir assemblage page 9/12

Mise en place du loqueteau



Découpe et parclose des plats de finition

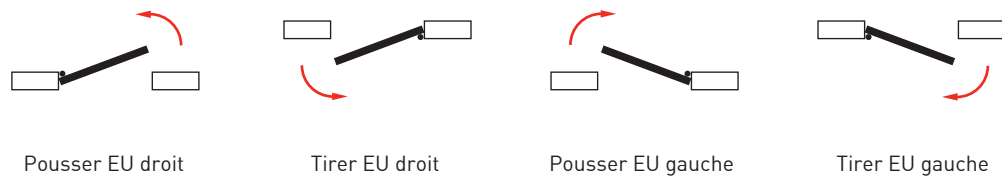


CLOISON

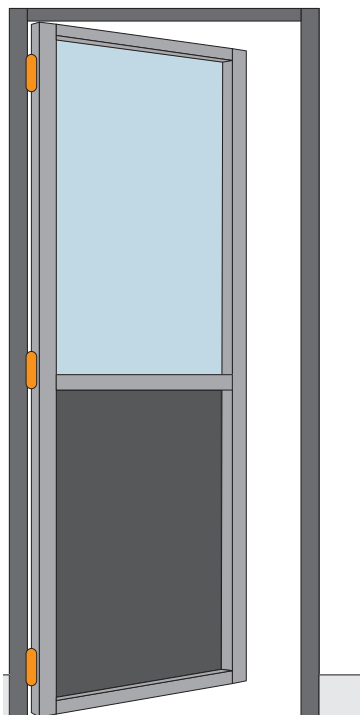
CLOISON AVEC PORTE - VERRIERE D'INTERIEUR

DESCRIPTION DE LA PORTE

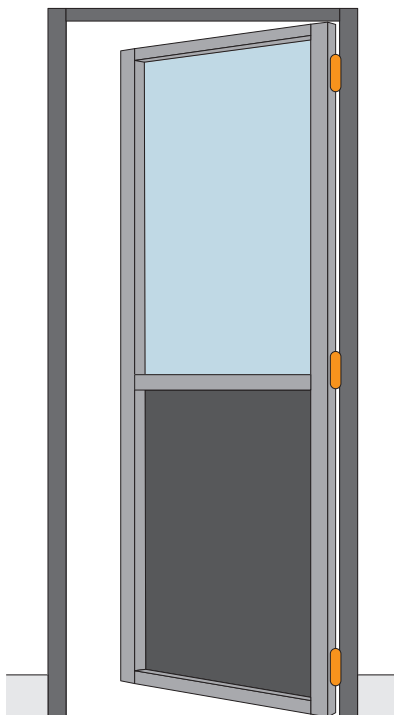
Sens d'ouverture et position des paumelles



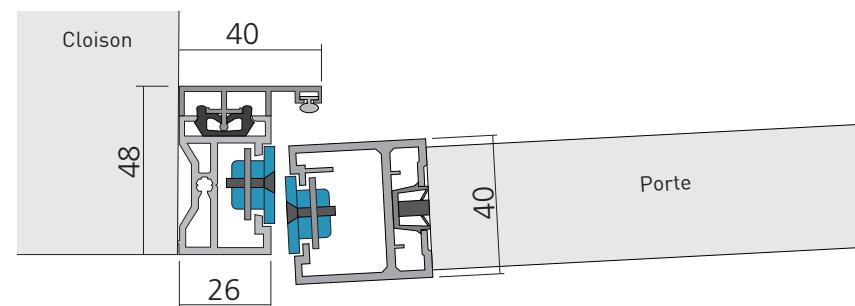
Type G - paumelle gauche



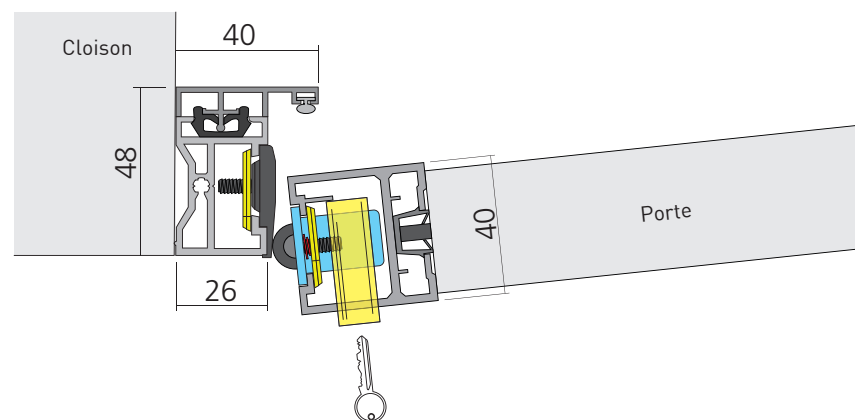
Type D - paumelle droite



Systèmes de fermeture



Standard : loqueteau magnétique sans contact



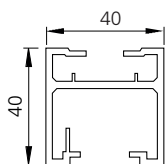
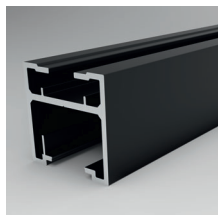
En option : serrure à rouleau avec demi-cylindre

CLOISON

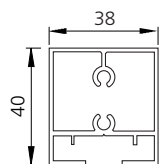
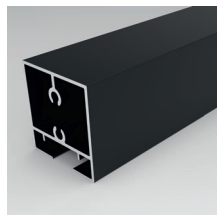
CLOISON AVEC PORTE - VERRIERE D'INTERIEUR

COMPOSANTS DE LA PORTE

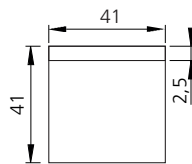
Porte



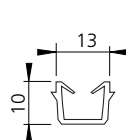
Profil porte



Traverse haute
et basse



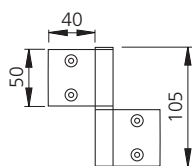
Capot
d'assemblage



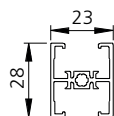
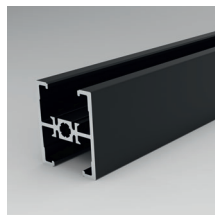
Profil
de vitrage



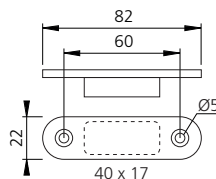
Vis 4,8 x 50
auto foreuse



Paumelle droite
ou gauche

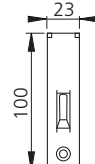


Traverse
horizontale



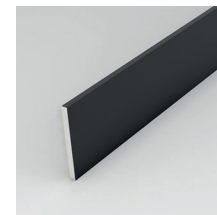
Loqueteau
magnétique

Verrou à onglet pour porte double battante

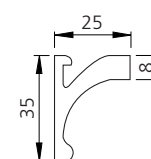
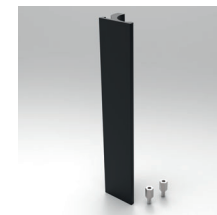


Verrou à onglet

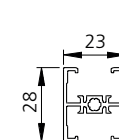
Options



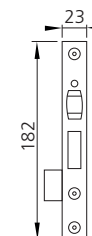
Profil à coller
pour travée



Poignée de tirage

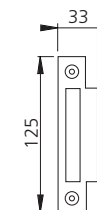
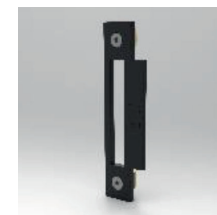


Traverse
horizontale
supplémentaire



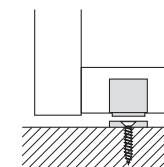
Option pour
porte battante

Serrure à rouleau
avec demi-cylindre
sans contact



Option pour
porte battante

Gâche de
fermeture pour
serrure à rouleau



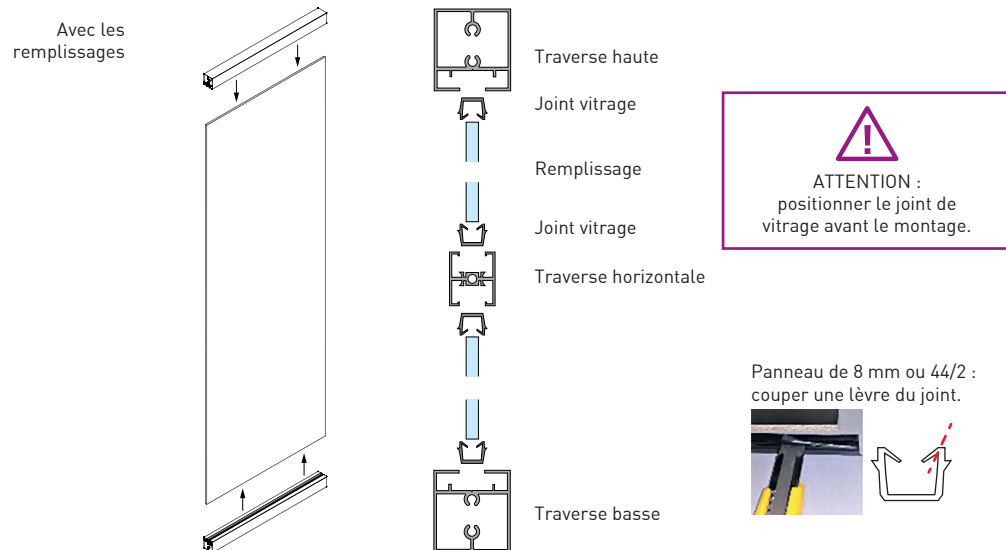
Arrêtoir
magnétique encastré

CLOISON

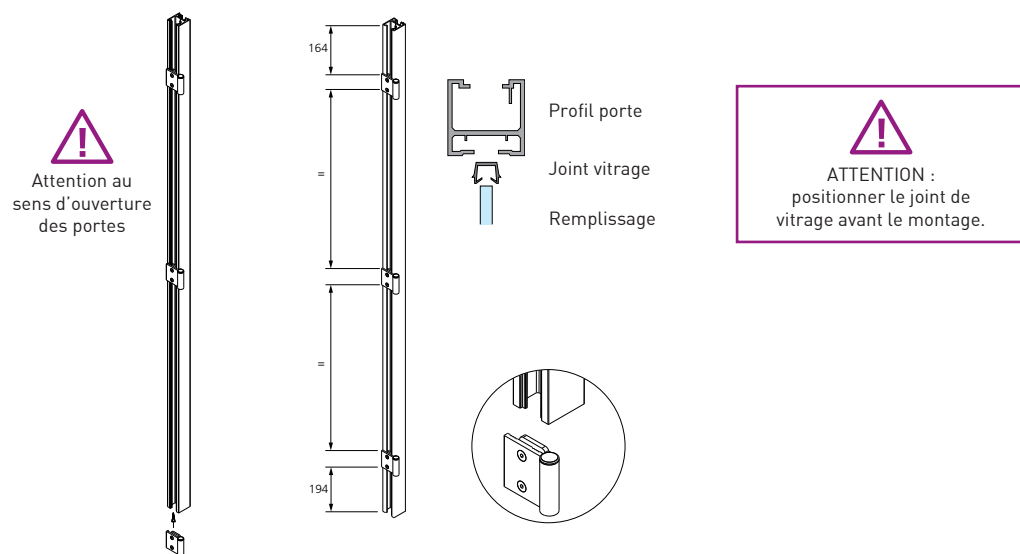
CLOISON AVEC PORTE - VERRIERE D'INTERIEUR

ASSEMBLAGE ET MISE EN PLACE DE LA PORTE

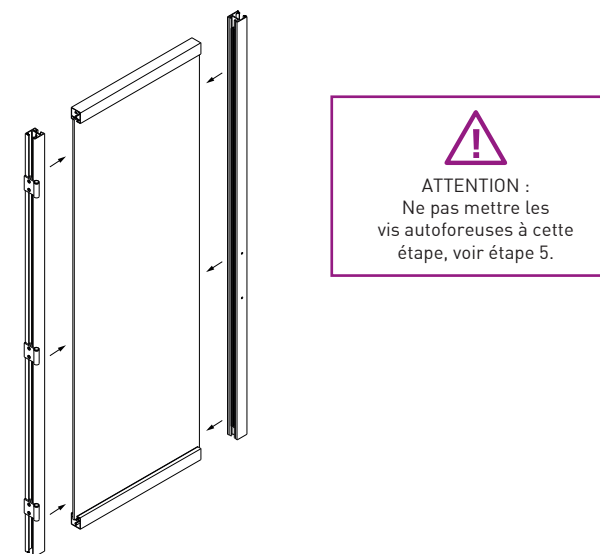
1 - Mise en place des traverses haute et basse



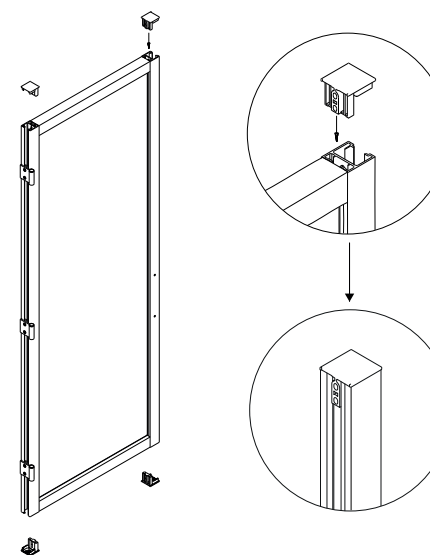
2 - Mise en place des paumelles supérieures



3 - Mise en place des profils



4 - Mise en place des capots d'assemblage

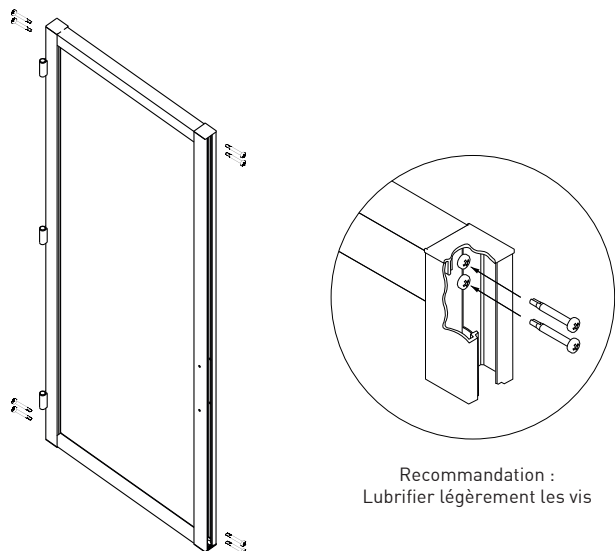


CLOISON

CLOISON AVEC PORTE - VERRIERE D'INTERIEUR

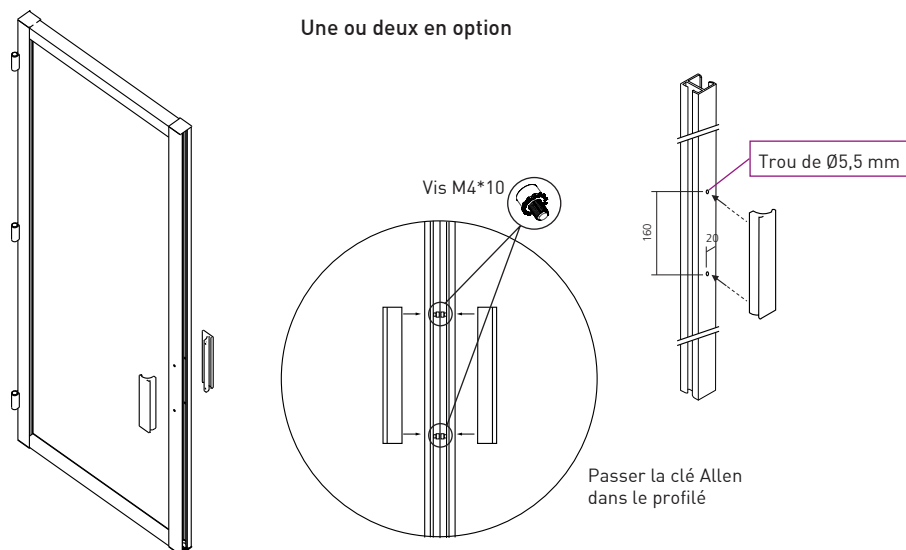
ASSEMBLAGE ET MISE EN PLACE DE LA PORTE

5 - Fixation de la porte avec vis auto foreuses 4*8 x 50



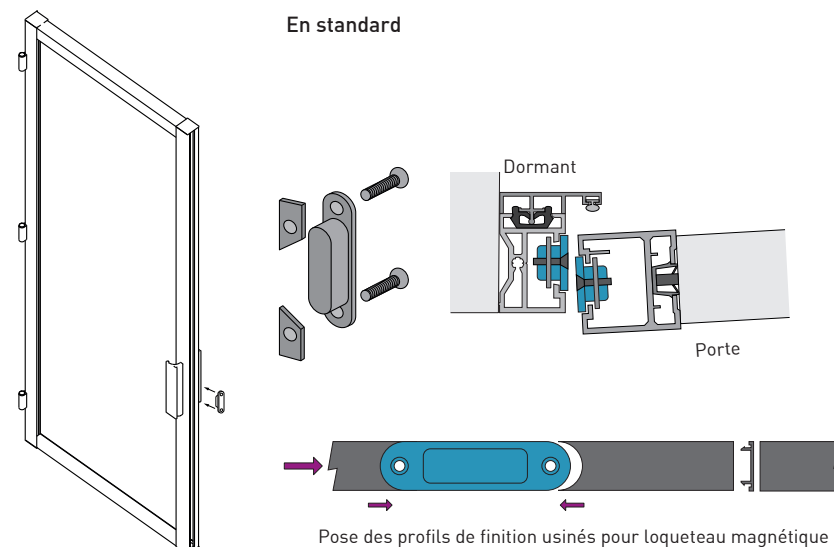
6 - Fixation de la poignée de tirage

Une ou deux en option



7 - Assemblage et pose des loqueteaux magnétiques

En standard



7 Bis - Option : Assemblage et pose de la serrure à rouleau demi-cylindre

