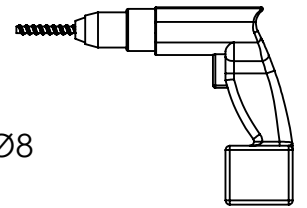
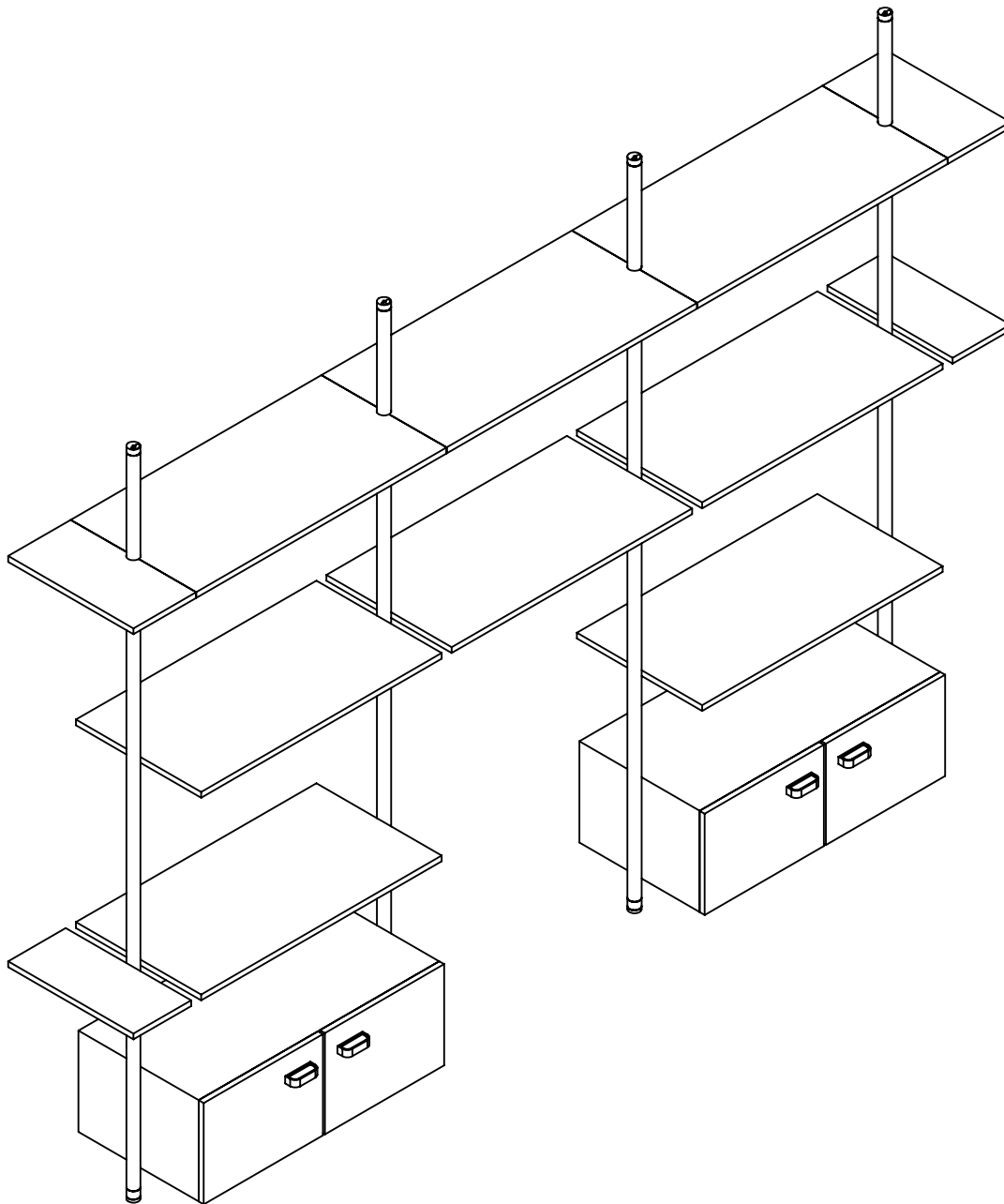


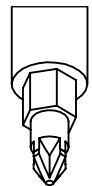
CYCLOS

A - Istruzioni di montaggio montanti a soffitto
A - Ceiling upright assembly instructions

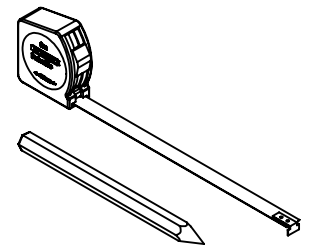


Ø8

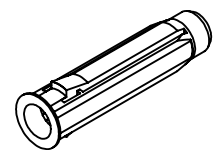
avvitatore
screwdriver



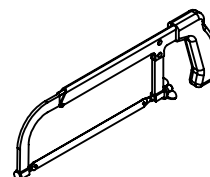
inserto a stella
star shape insert



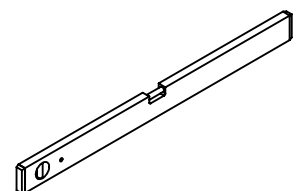
incisore e metro
engraver and meter



tassello
expansion plug



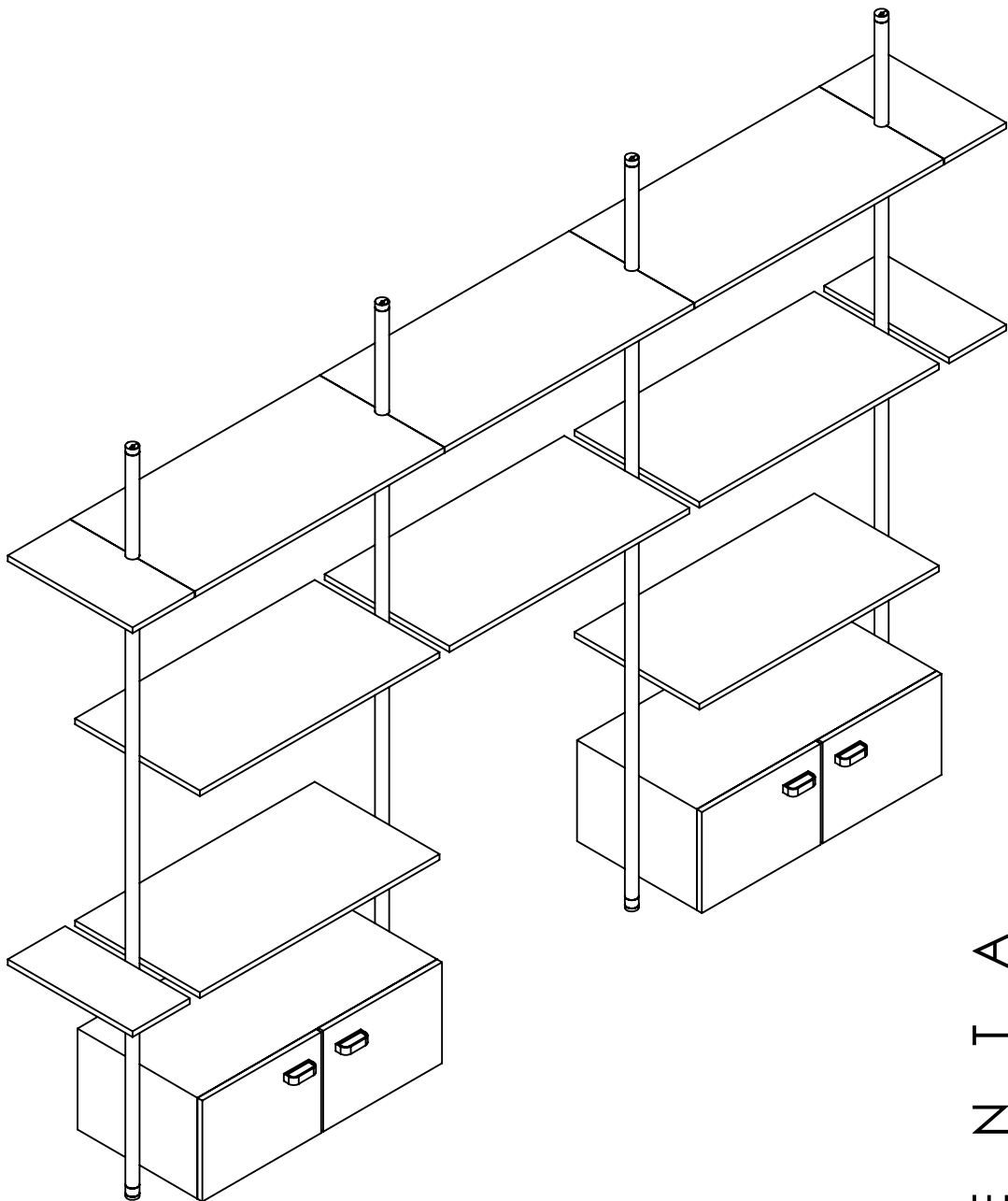
sega
saw



livella
level

CYCLOS

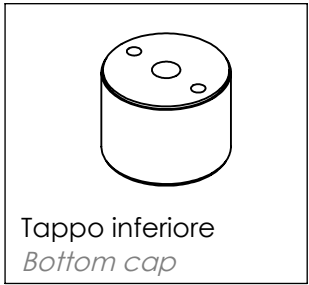
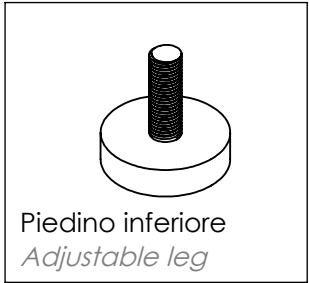
A - Istruzioni di montaggio montanti a soffitto
A - Ceiling upright assembly instructions



P R O F I L I



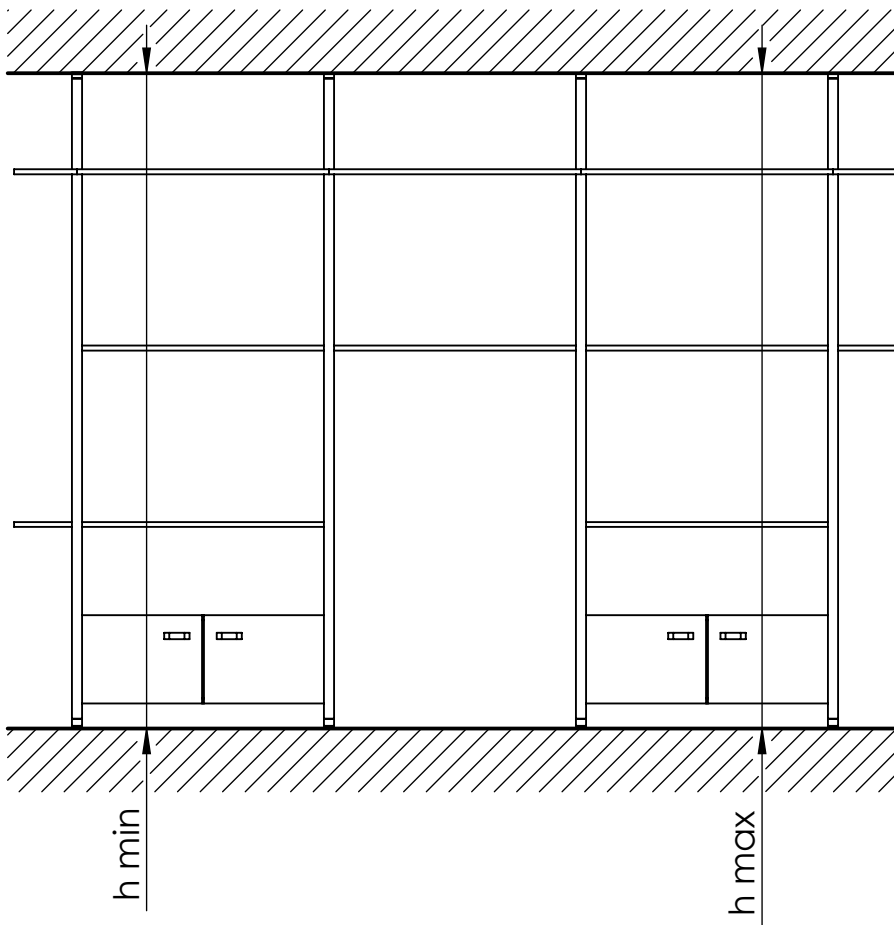
F E R R A M E N T A



CYCLOS

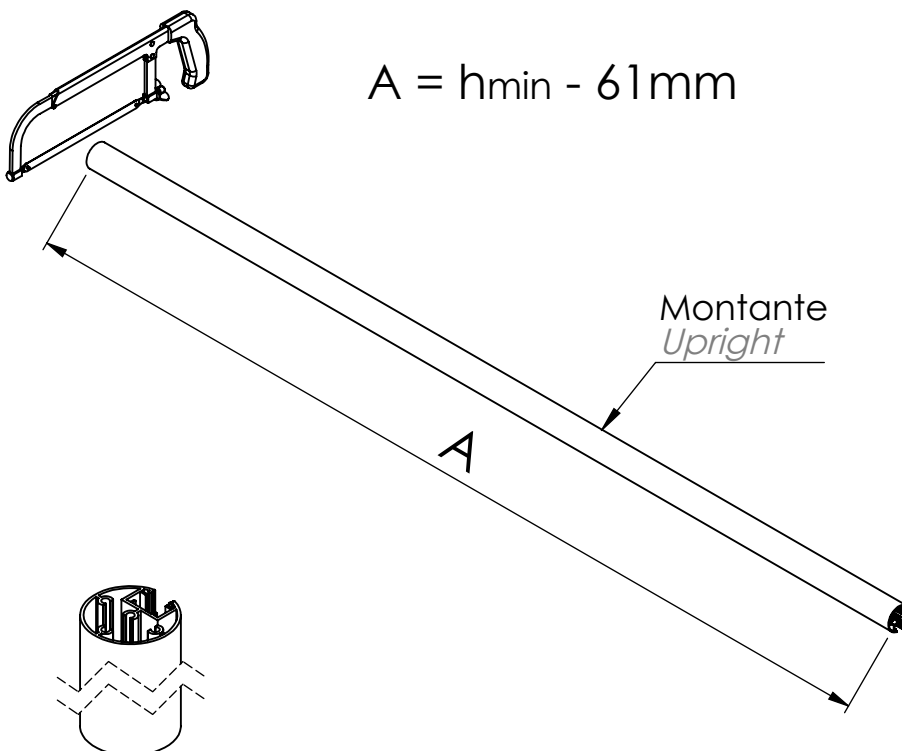
A - Istruzioni di montaggio montanti a soffitto
A - Ceiling upright assembly instructions

A1



$$h_{\max} - h_{\min} = \max 20\text{mm}$$

A2



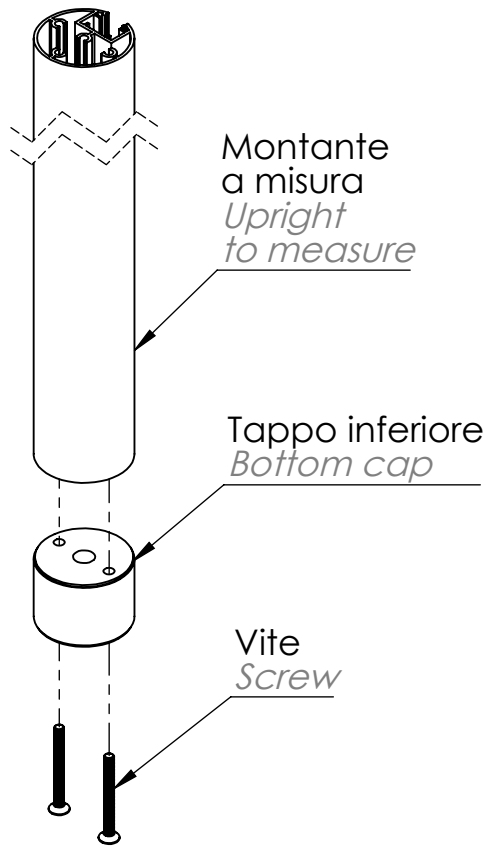
$$A = h_{\min} - 61\text{mm}$$

Tagliare il profilo del
montante a misura
*Cut the upright profile
to the desired
dimension*

CYCLOS

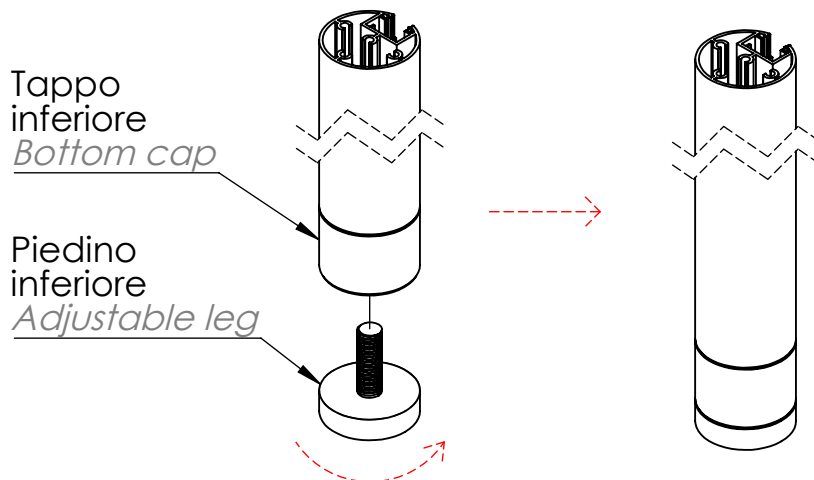
A - Istruzioni di montaggio montanti a soffitto
A - Ceiling upright assembly instructions

A3



Avvitare il tappo inferiore nel montante tagliato a misura
Screw the lower cap into the upright

A4



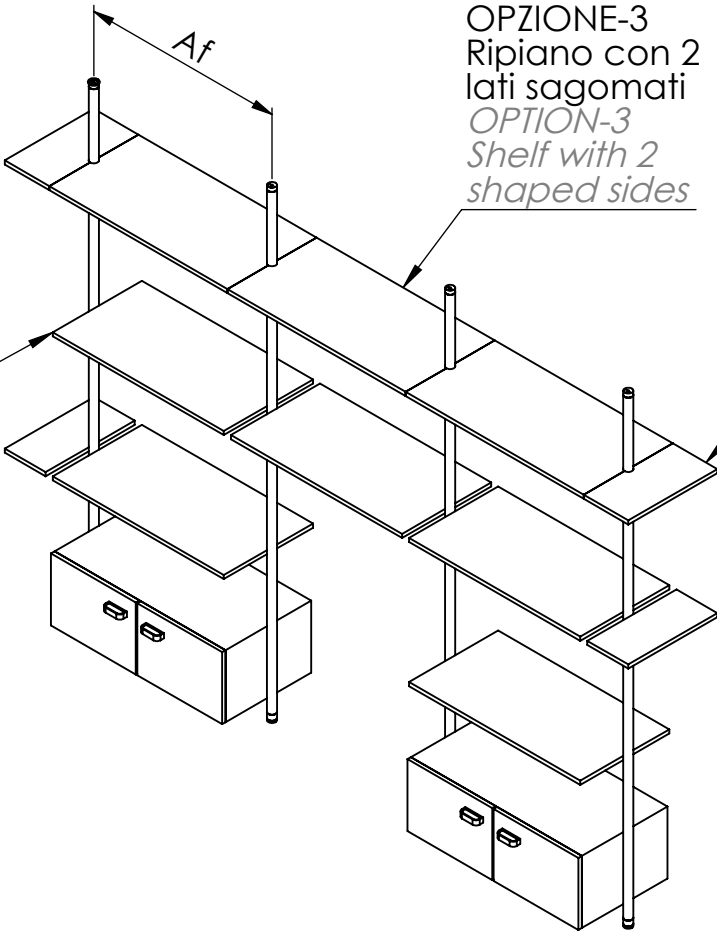
Avvitare il piedino inferiore fino alla totale chiusura con il tappo inferiore
Screw the adjustable leg until the complete fixing with the bottom cap

CYCLOS

A - Istruzioni di montaggio montanti a soffitto
A - Ceiling upright assembly instructions

A5

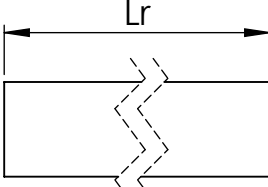
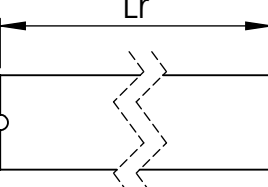
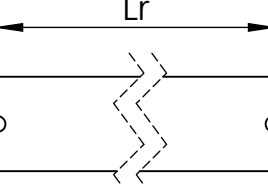
OPZIONE-1
Ripiano non
sagomato
*OPTION-1
Shelf not
shaped*



OPZIONE-3
Ripiano con 2
lati sagomati
*OPTION-3
Shelf with 2
shaped sides*

OPZIONE-2
Ripiano con 1
lato sagomato
*OPTION-2
Shelf with 1
shaped side*

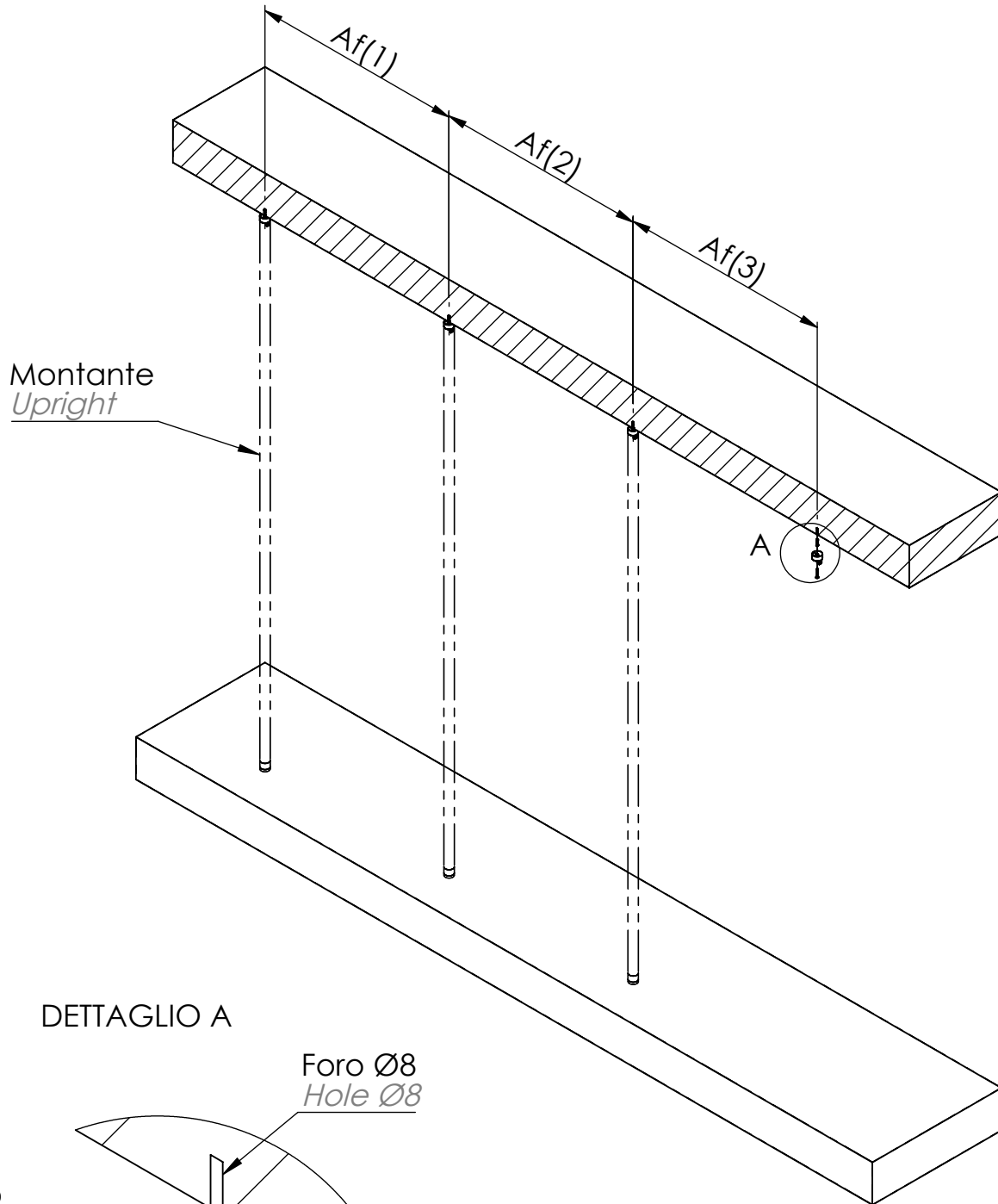
L'asse tra i montanti (Af)
dipende dal tipo di ripiano e
dalla sua larghezza, a
riguardo consultare la
tabella sottostante
*The axis between the
uprights (Af) depends on the
type of shelf and its width,
please consult the below
scheme*

Af (asse foratura) Af (drilling axis)	Lr (larghezza ripiano) Lr (shelf width)
$Af = Lr + 40mm$	 Ripiano non sagomato (OPZIONE-1) <i>Shelf not shaped (OPTION-1)</i>
$Af = Lr + 20mm$	 Ripiano con 1 lato sagomato (OPZIONE-2) <i>Shelf with 1 shaped side (OPTION-2)</i>
$Af = Lr$	 Ripiano con 2 lati sagomati (OPZIONE-3) <i>Shelf with 2 shaped sides (OPTION-3)</i>

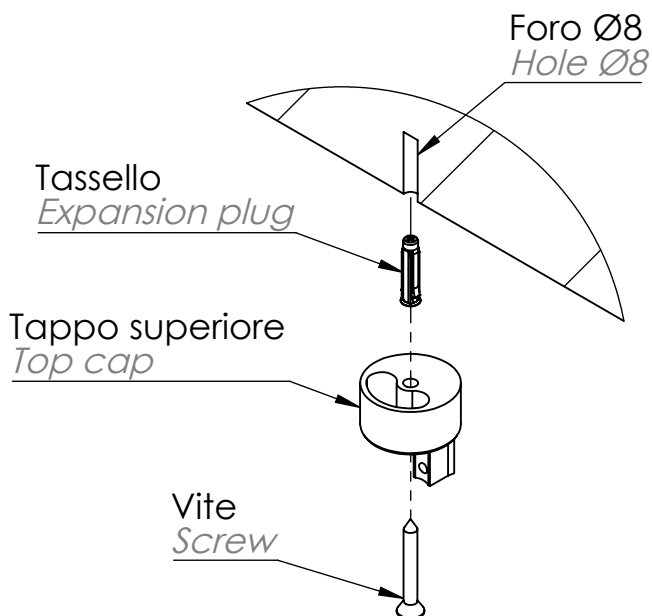
CYCLOS

A - Istruzioni di montaggio montanti a soffitto
A - Ceiling upright assembly instructions

A6



DETTAGLIO A



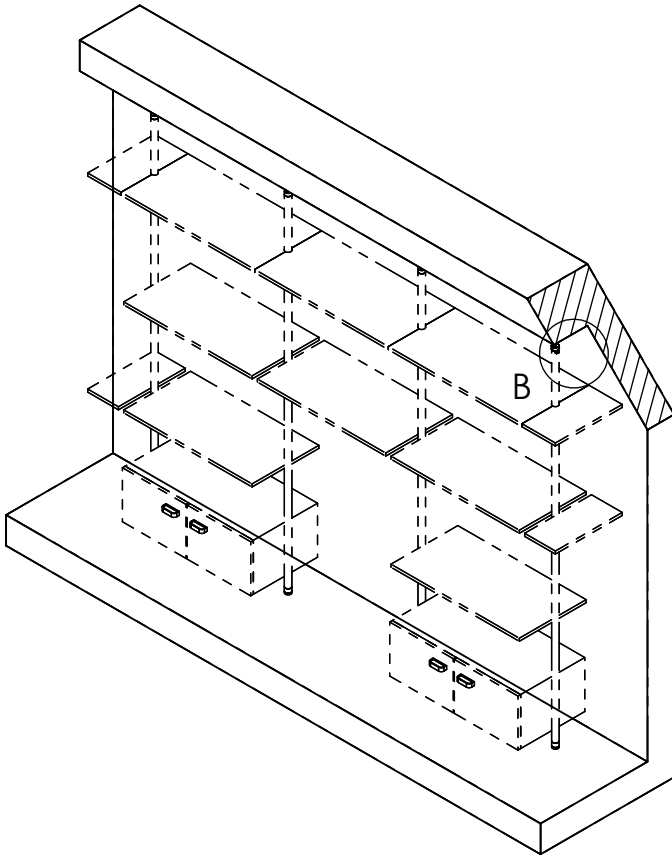
Forare il soffitto con punta Ø8 e
fissare tutti i tappi superiori
*Drill the ceiling with a Ø8 drill bit
and secure all top caps*

CYCLOS

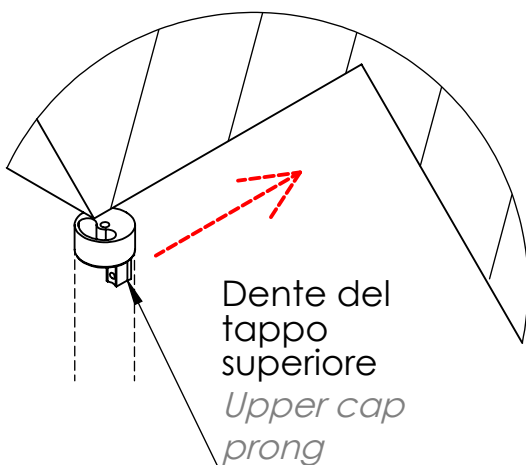
A - Istruzioni di montaggio montanti a soffitto
A - Ceiling upright assembly instructions

A7

Per parete vicina a muro
For media walls close to walls

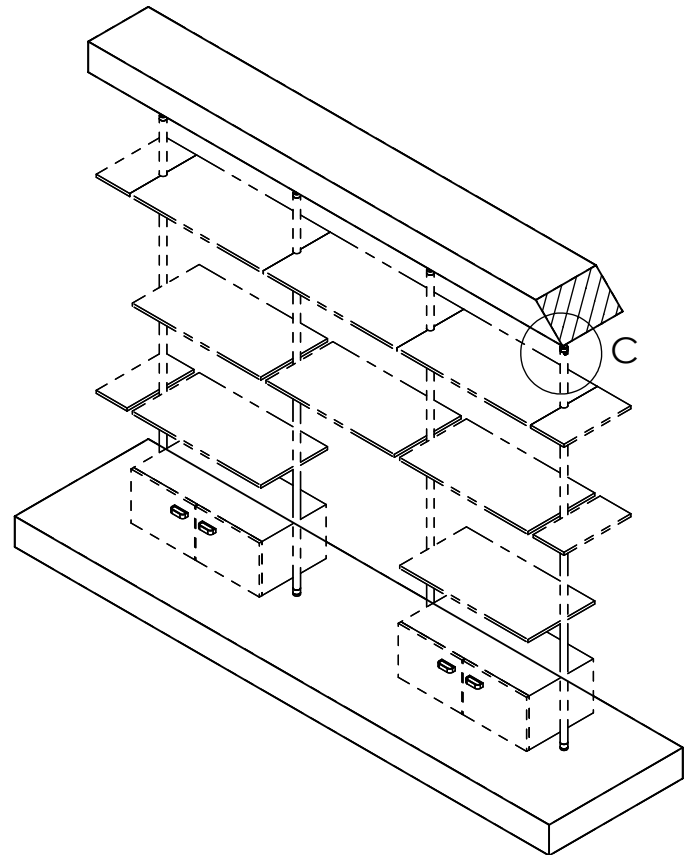


DETTAGLIO B



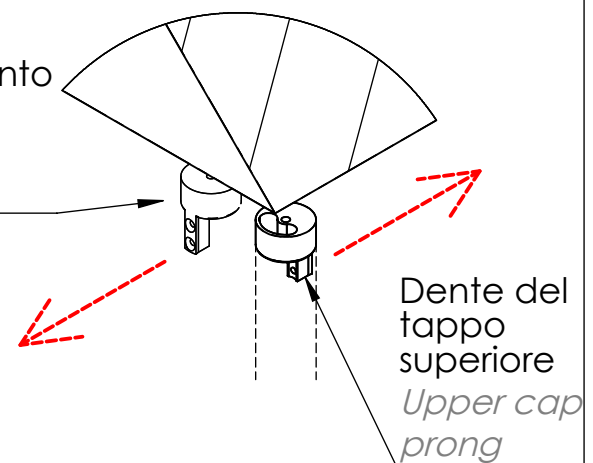
Rivolgere il dente del tappo superiore verso la parete in muratura, in modo che la cava del montante sia rivolta verso il muro
Turn the top cap prong forward towards the masonry wall, so as the upright slot faces the wall itself

Per parete centrale
For central media wall



DETTAGLIO C

Orientamento alternativo
Alternative orientation

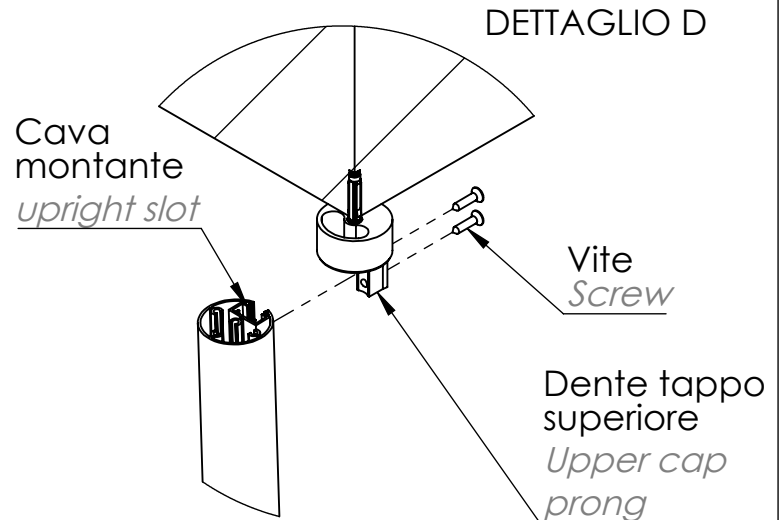
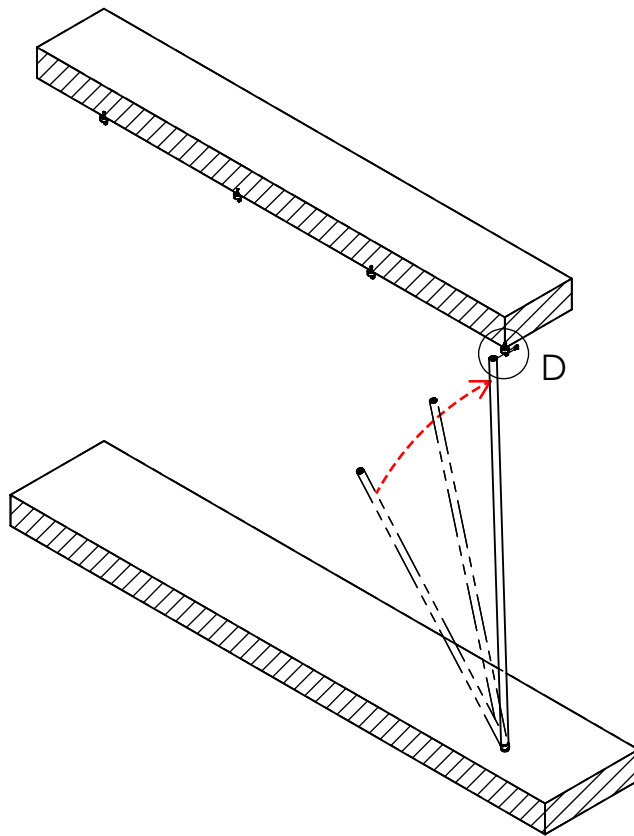


Rivolgere il dente del tappo superiore ortogonalmente ai ripiani
Turn the upper cap prong orthogonal to the shelves

CYCLOS

A - Istruzioni di montaggio montanti a soffitto A - Ceiling upright assembly instructions

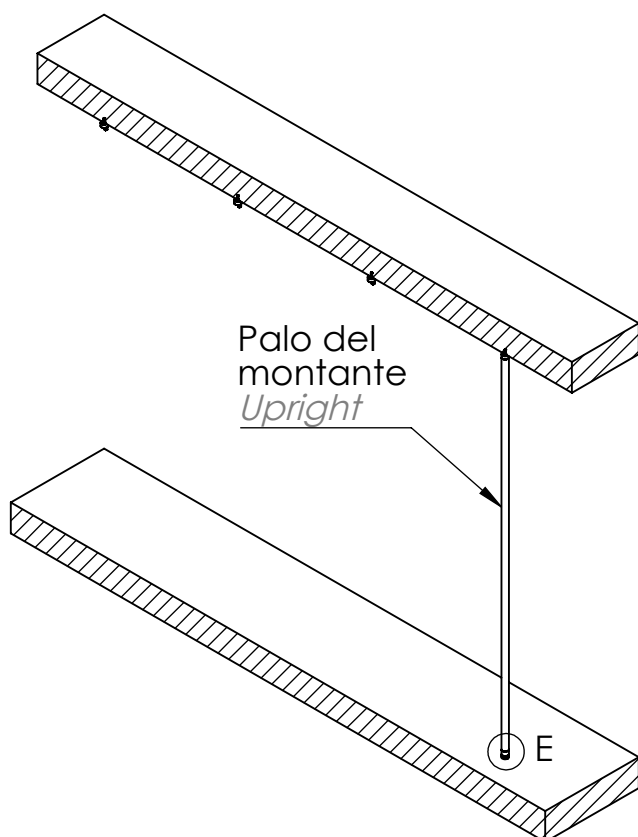
A8



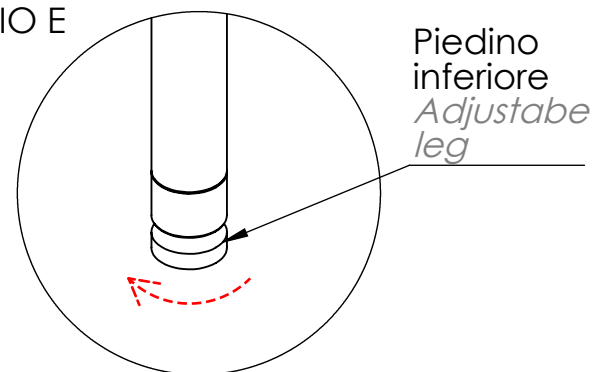
Innestare il montante al tappo superiore, bloccandolo con le due viti

Insert the upright slot into the upper cap prong and fix it with the given screws

A9



DETTAGLIO E



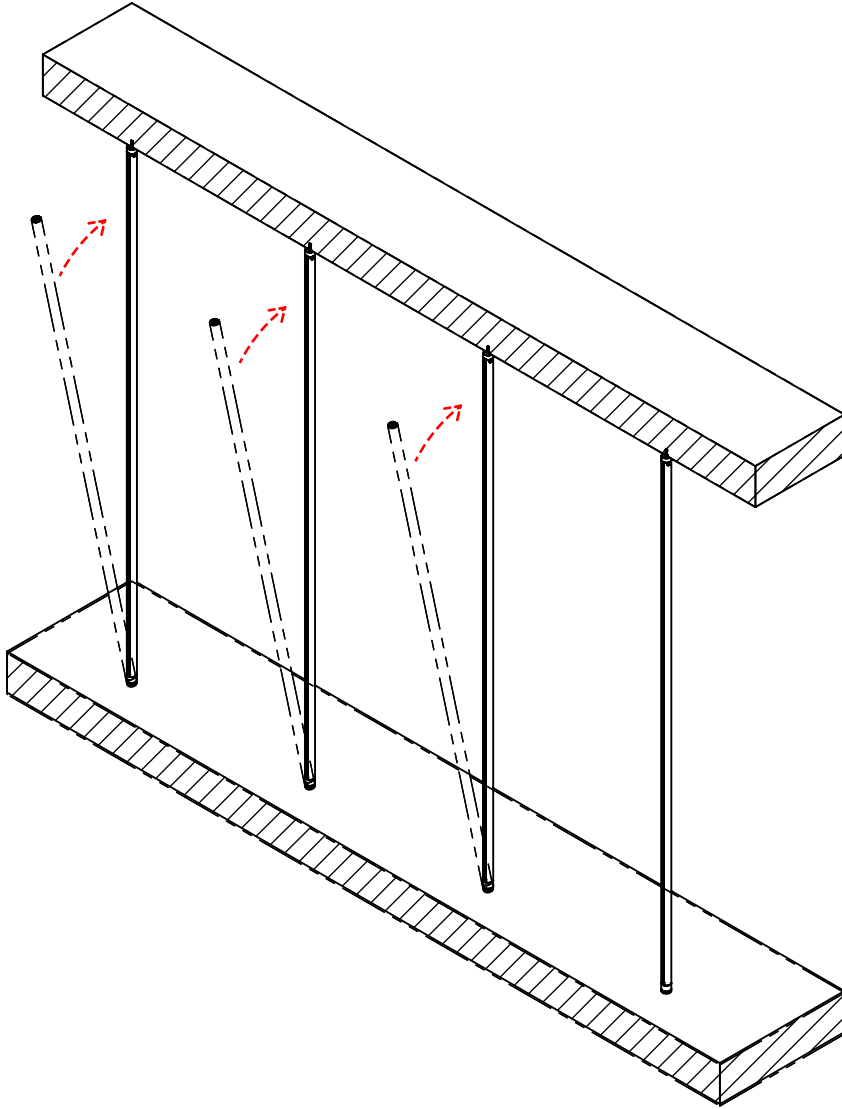
Svitare il piedino inferiore di quanto serve per mettere il palo in spinta (Dettaglio E)

Adjust the leg to push the upright and fix the final position (Dettaglio E)

CYCLOS

A - Istruzioni di montaggio montanti a soffitto
A - Ceiling upright assembly instructions

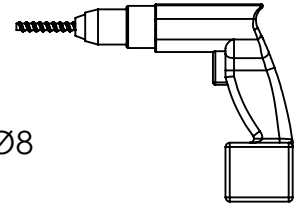
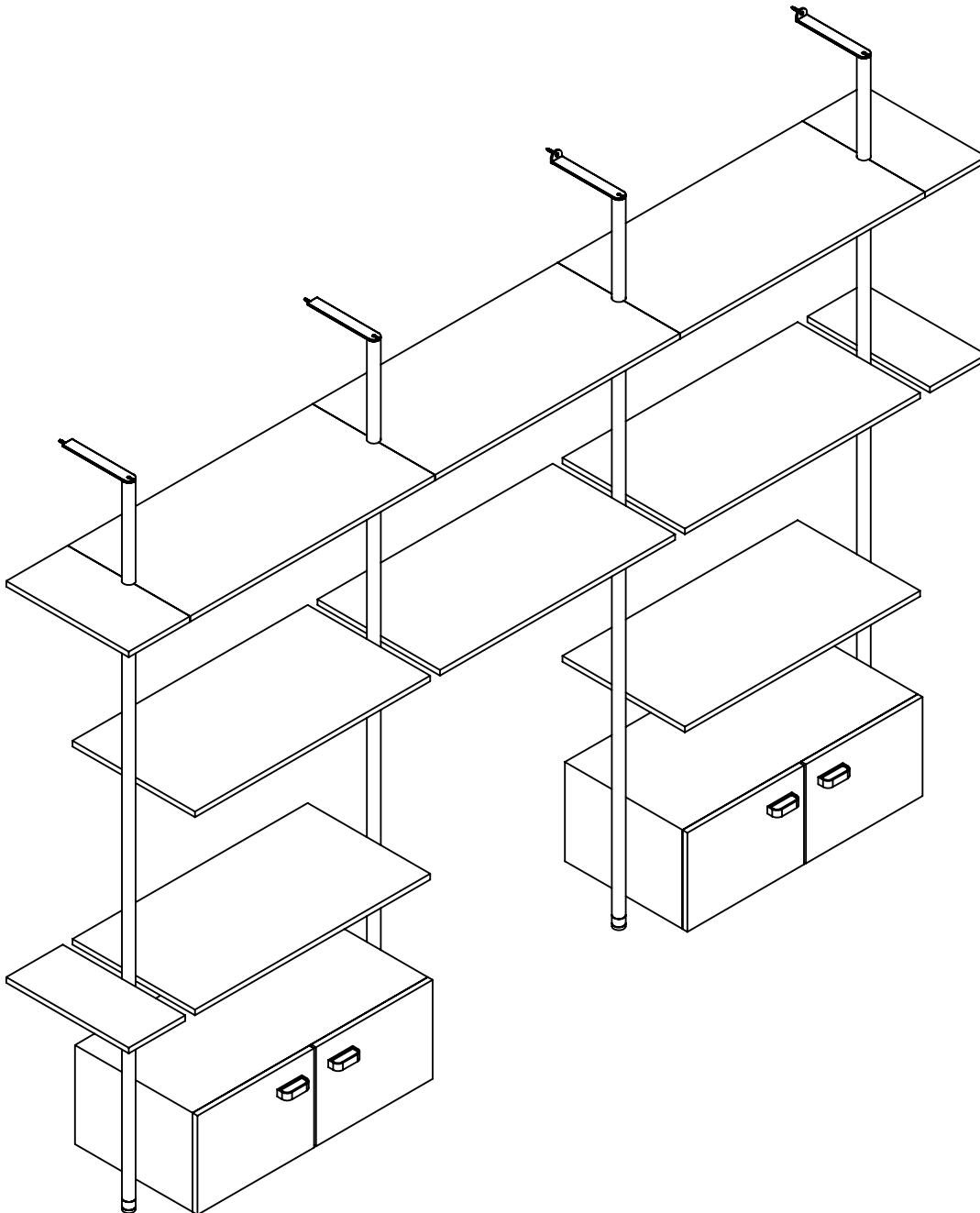
10



Ripetere i punti A8 e A9
per i rimanenti montanti
*Repeat steps A8 and A9
for the remaining uprights*

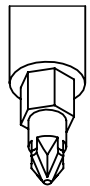
CYCLOS

B - Istruzioni di montaggio montanti a muro
B - Wall upright assembly instructions

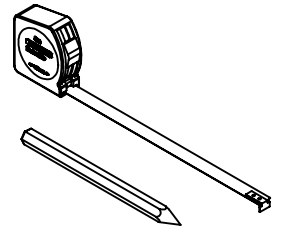


Ø8

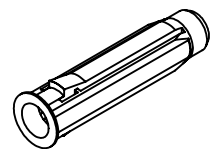
avvitatore
screwdriver



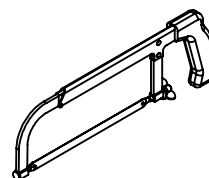
inserto a stella
star shape insert



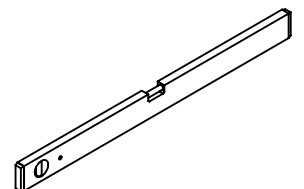
incisore e metro
engraver and meter



tassello
expansion plug



sega
saw

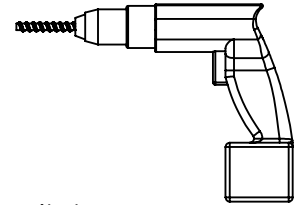
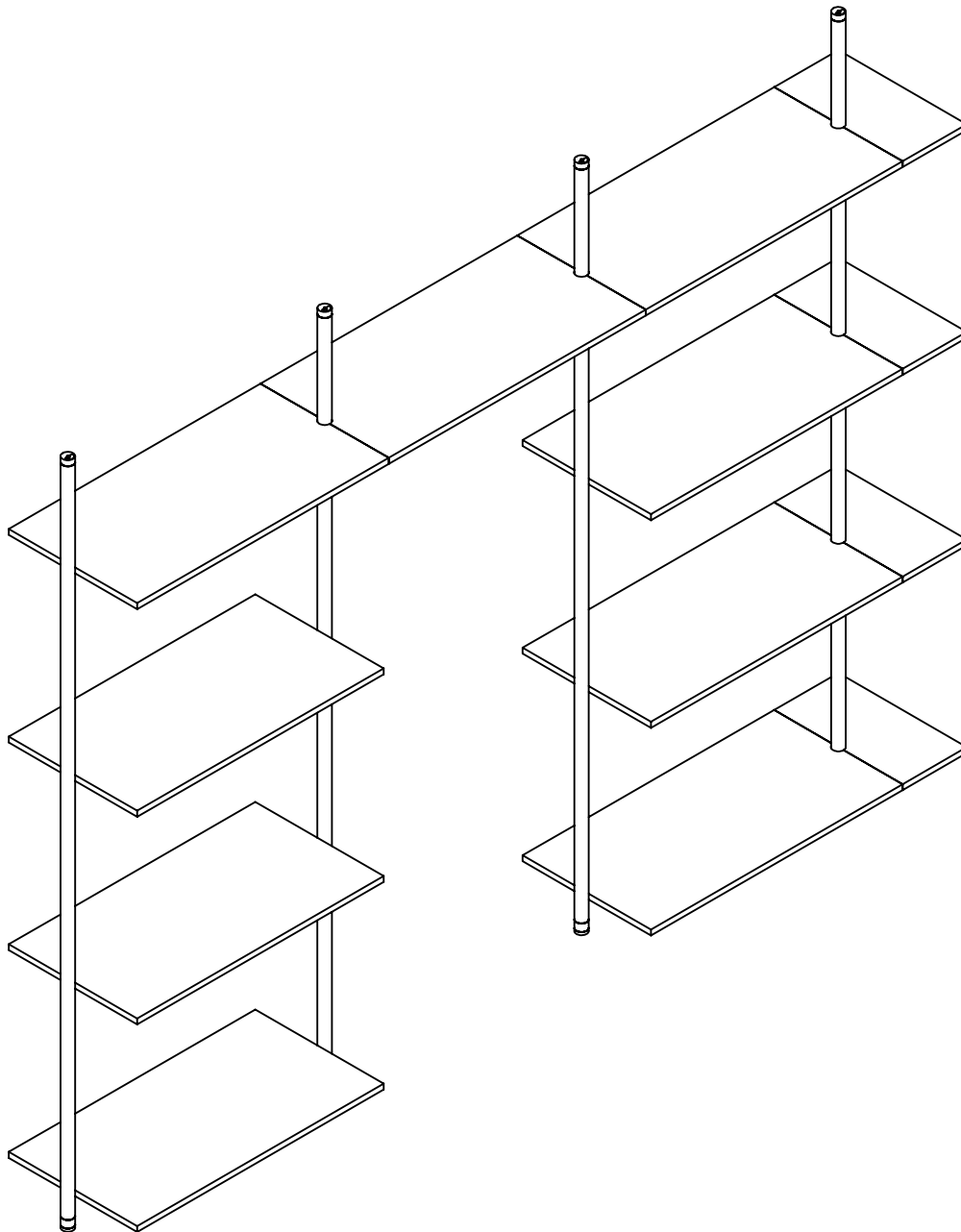


livella
level

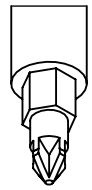
CYCLOS

C - Istruzioni di montaggio morsetti

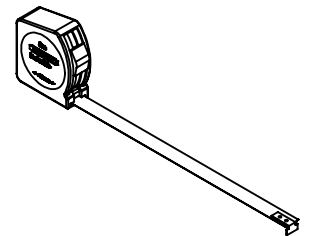
C - Clamp assembly instructions



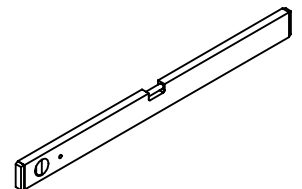
avvitatore
screwdriver



inserto a stella
Star shape insert



metro
meter

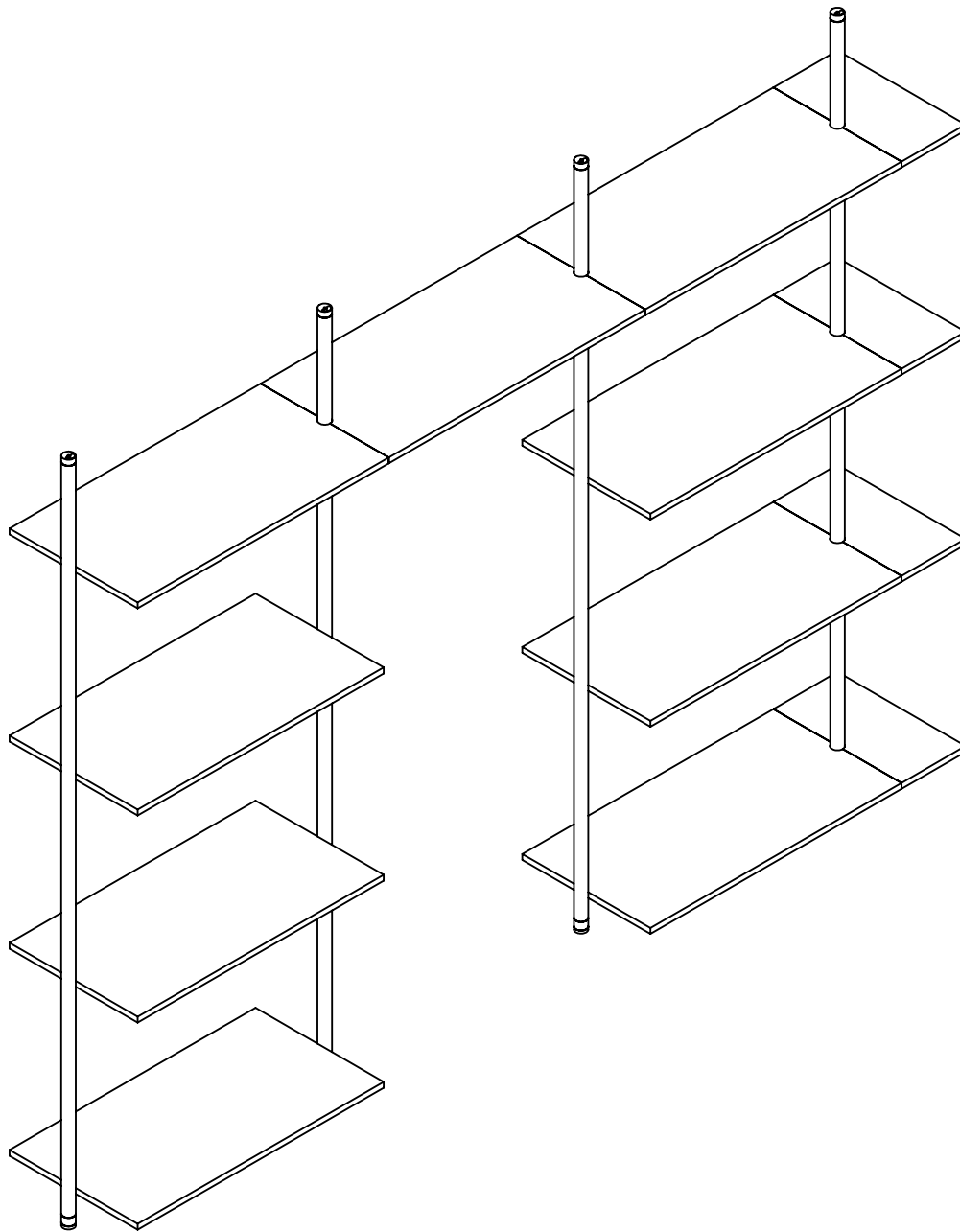


livella
level

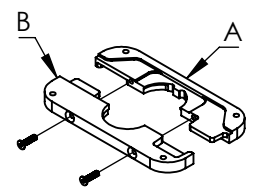
CYCLOS

C - Istruzioni di montaggio morsetti

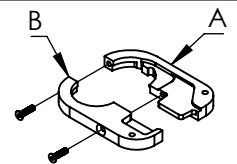
C - Clamp assembly instructions



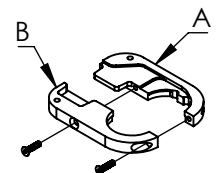
F E R R A M E N T A



Morsetto centrale
Central clamp



Morsetto terminale destro
Right end clamp



Morsetto terminale sinistro
Left end clamp

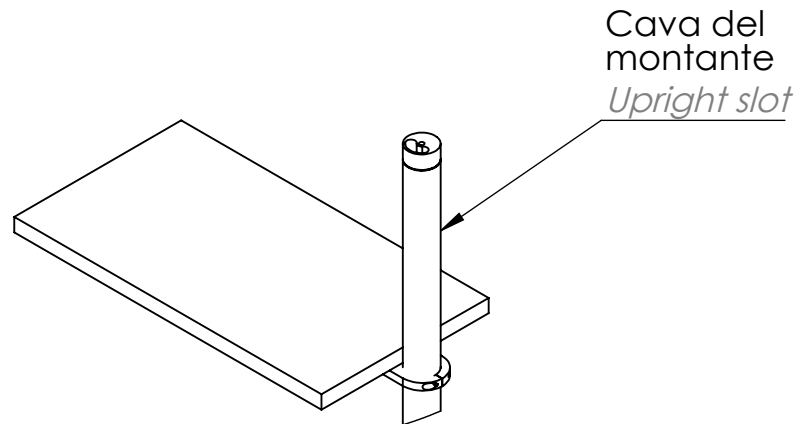
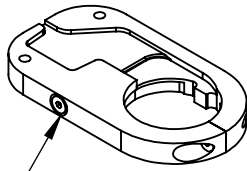
CYCLOS

C - Istruzioni di montaggio morsetti *C - Clamp assembly instructions*

C1

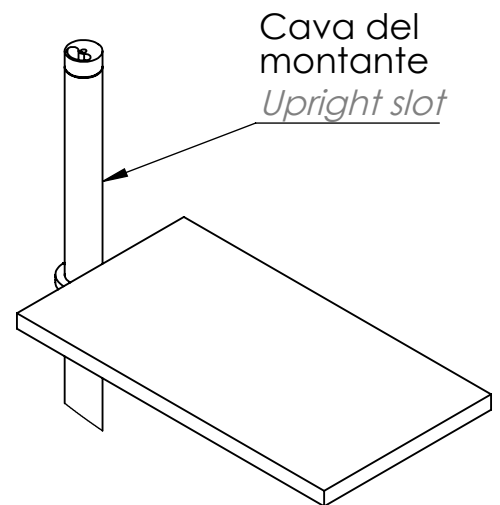
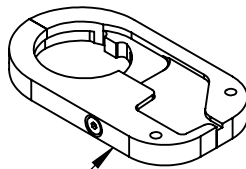
Morsetto terminale sinistro *Left end clamp*

i fori svasati
sono rivolti
verso il basso
*the countersunk
holes are turned
downward*



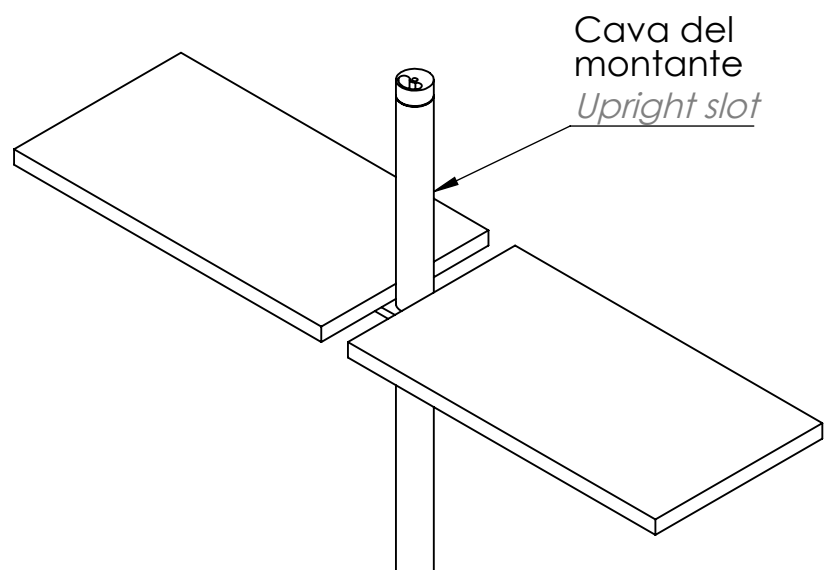
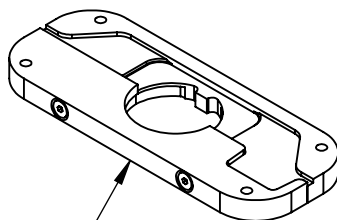
Morsetto terminale destro *Right end clamp*

i fori svasati
sono rivolti
verso il basso
*the countersunk
holes are turned
downward*



Morsetto centrale *Central clamp*

i fori svasati
sono rivolti
verso il basso
*the countersunk
holes are turned
downward*



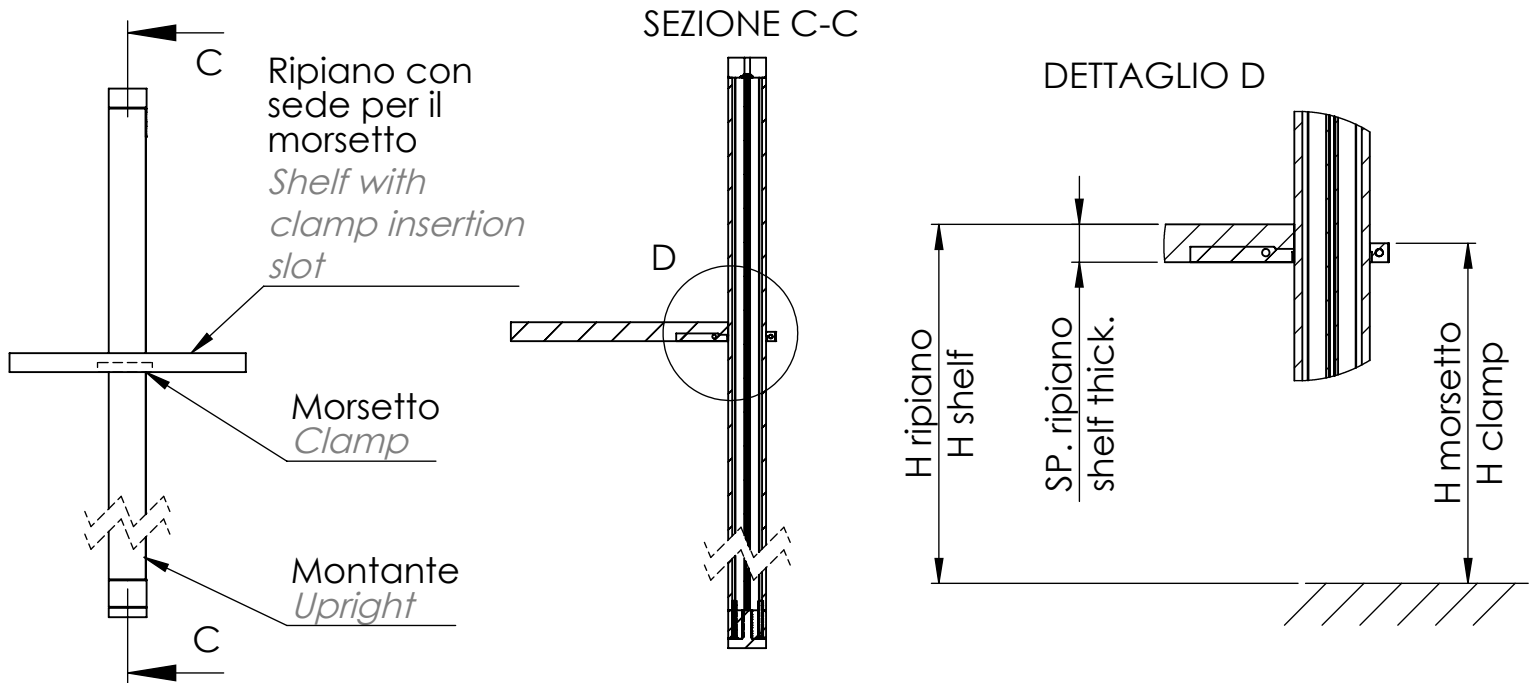
CYCLOS

C - Istruzioni di montaggio morsetti C - Clamp assembly instructions

C2a Ripiano con sede per morsetto *Shelf with clamp insertion slot*

$$H \text{ morsetto} = H \text{ ripiano} - SP. \text{ ripiano} + 10\text{mm}$$

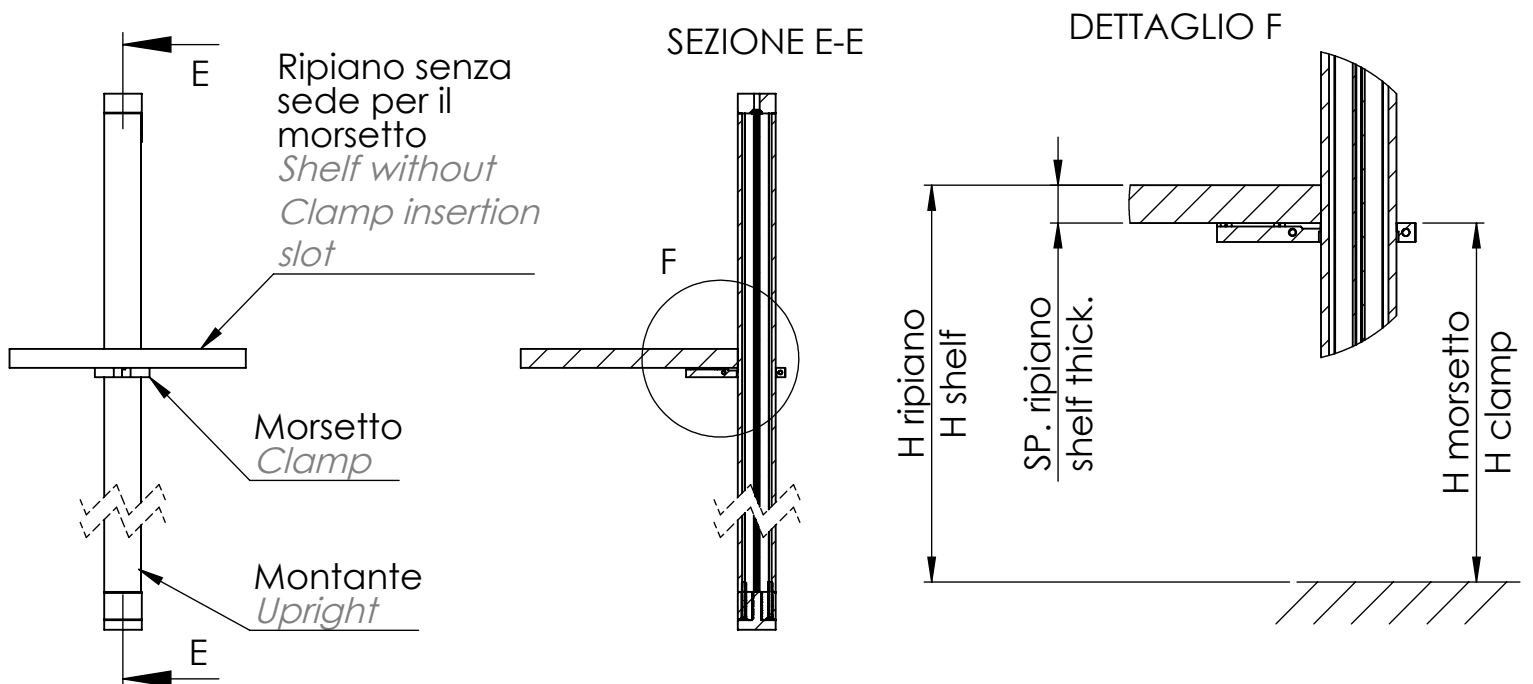
$$H \text{ clamp} = H \text{ shelf} - \text{shelf thick.} + 10\text{mm}$$



C2b Ripiano senza sede per morsetto *Shelf without Clamp insertion slot*

$$H \text{ morsetto} = H \text{ ripiano} - SP. \text{ ripiano}$$

$$H \text{ clamp} = H \text{ shelf} - \text{shelf thick.}$$

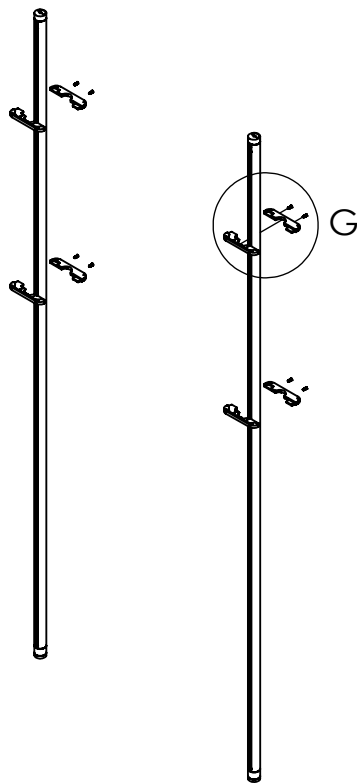


CYCLOS

C - Istruzioni di montaggio morsetti

C - Clamp assembly instructions

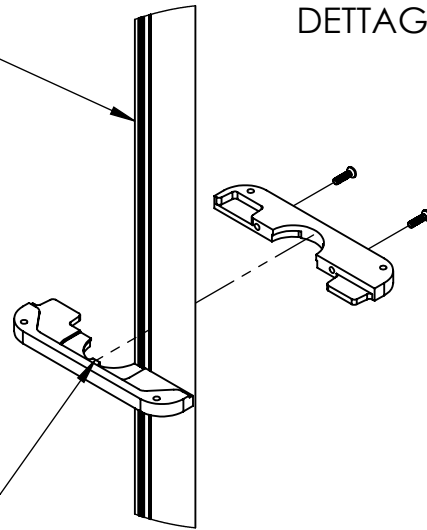
C3



Cava del
montante
Upright slot

DETTAGLIO G

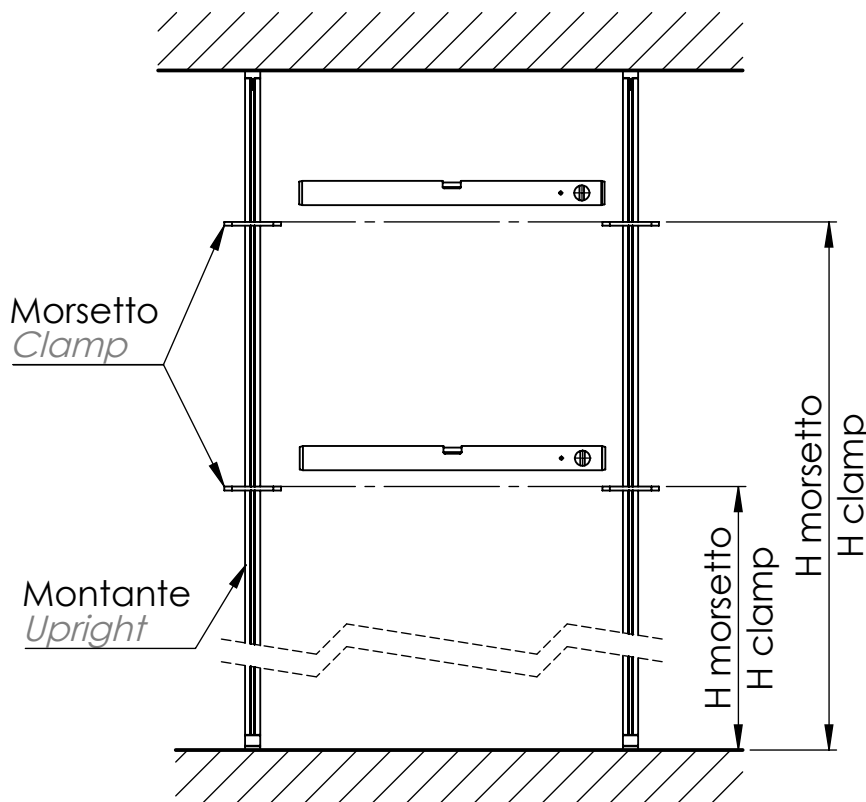
Dente del
morsetto
Clamp prog



Posizionare i morsetti alla corretta altezza
precedentemente calcolata, con un fissaggio
morbido delle viti

*Place the clamps at the previously calculated
correct height, by a soft fixing of the screws*

C4

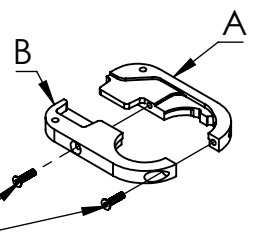


Controllare la planarità dei
morsetti dello stesso ripiano
*Check the flatness of the clamps
of the same shelf*

Serrare le viti che fermano le due
parti (A e B) del morsetto
ancorandolo stabilmente al
montante

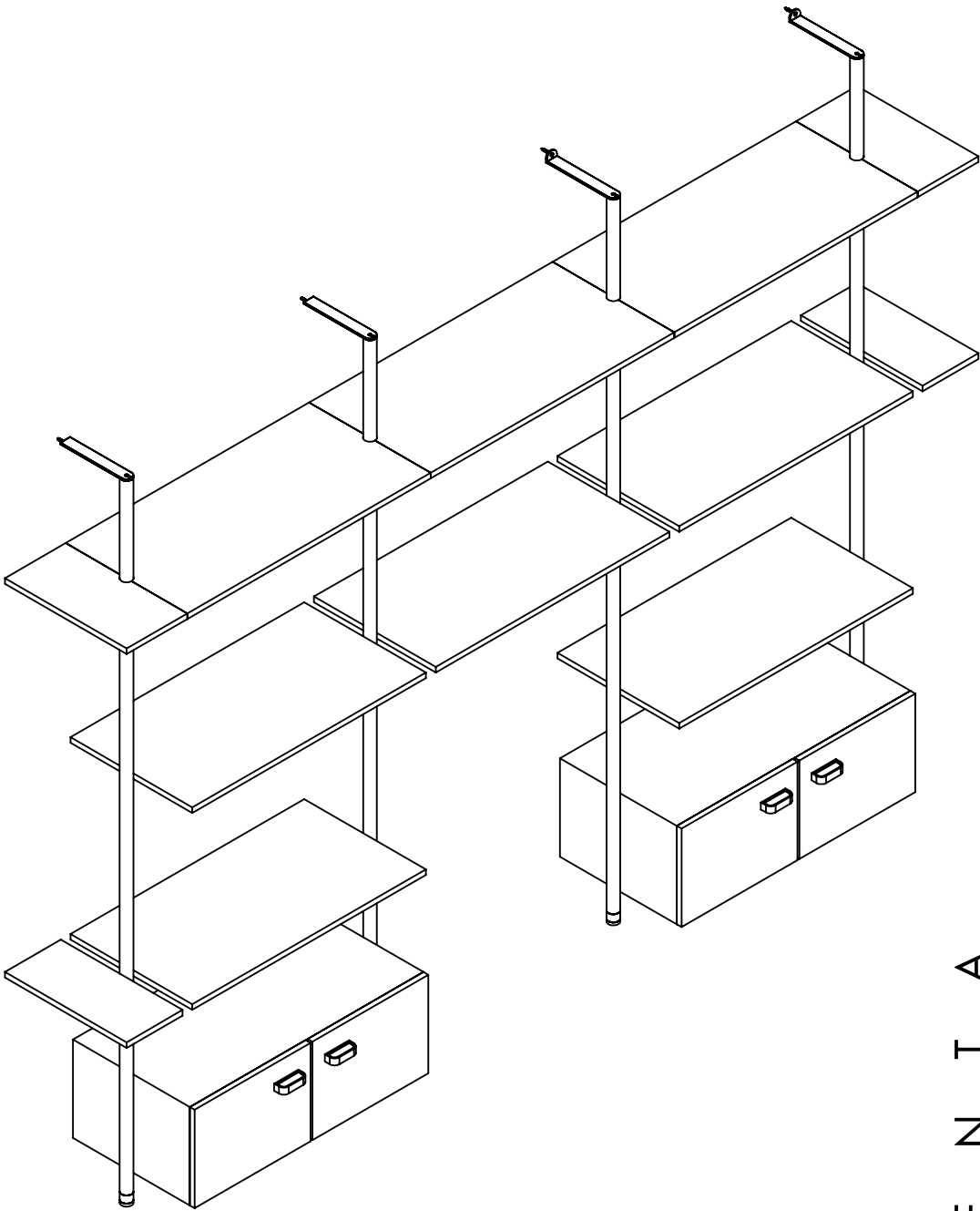
*Tighten the screws that secure
the two parts (A and B) of the
clamp anchoring it stably to the
upright*

Viti
fissaggio
morsetto
*Clamp fixing
screws*

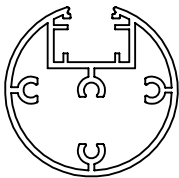


CYCLOS

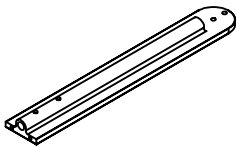
B - Istruzioni di montaggio montanti a muro
B - Wall upright assembly instructions



P R O F I L I

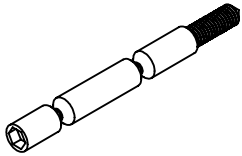


Montante
Upright

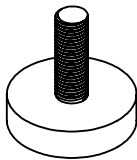


Traverso superiore
Upper crosswise

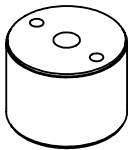
F E R R A M E N T A



Perno fissaggio a muro
Wall fixing pin



Piedino inferiore
Adjustable leg

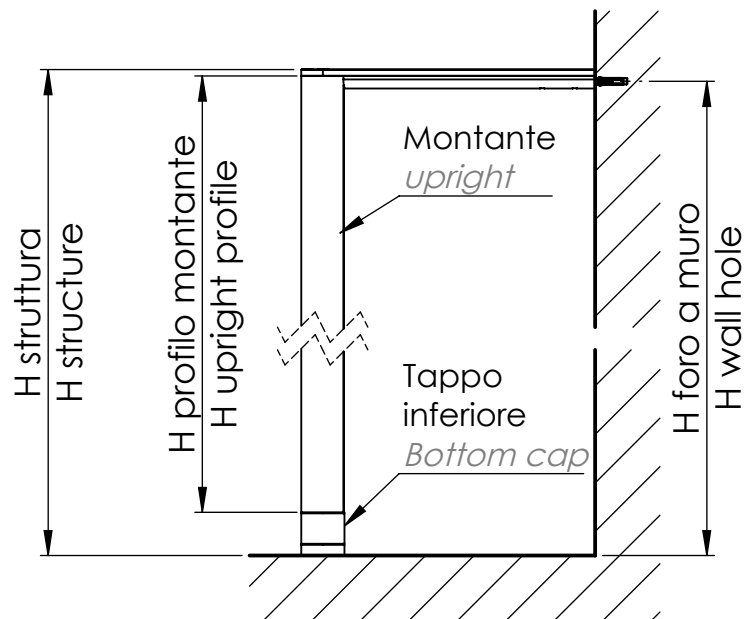
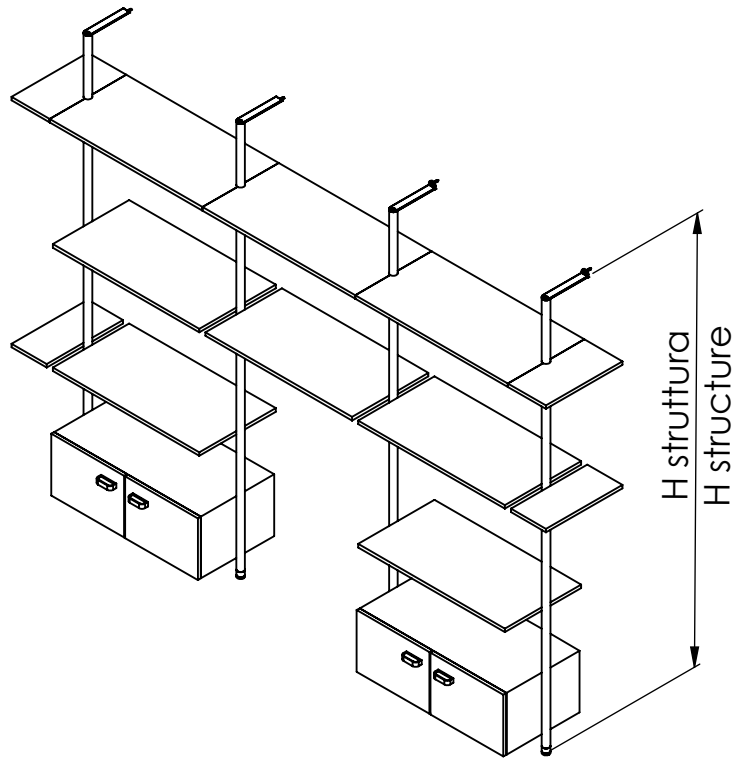


Tappo inferiore
Bottom cap

CYCLOS

B - Istruzioni di montaggio montanti a muro *B - Wall upright assembly instructions*

B1



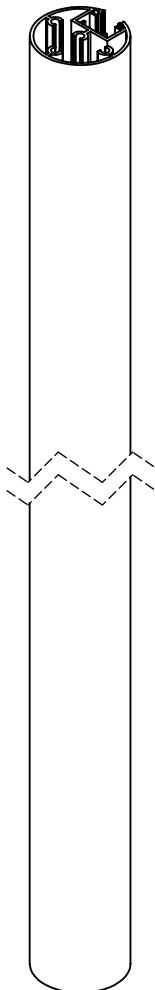
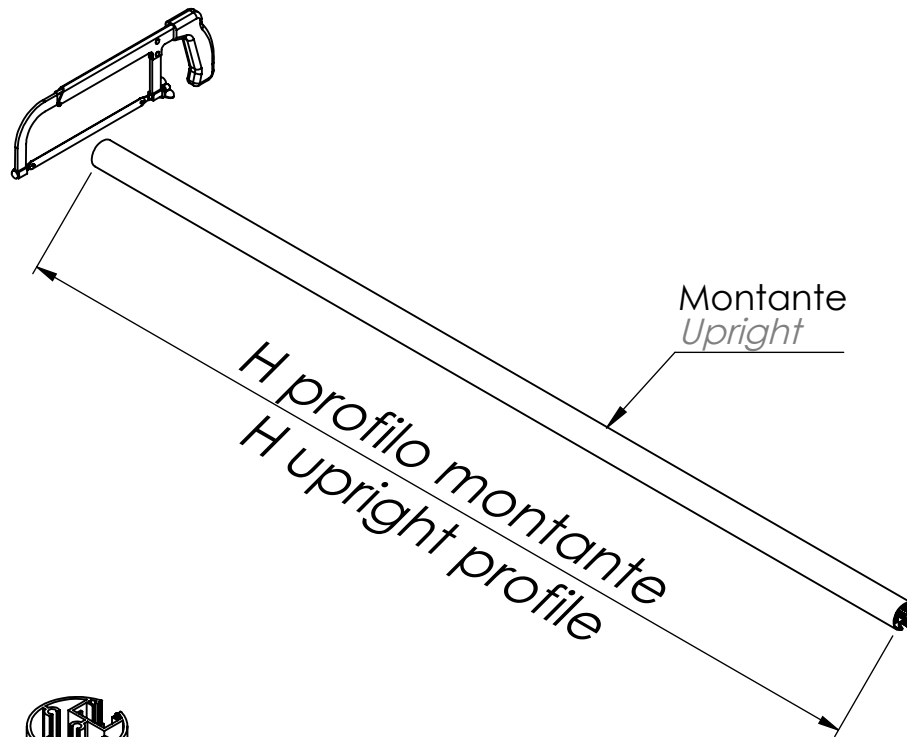
$H \text{ profilo montante} = H \text{ struttura} - 46\text{mm}$
 $H \text{ upright profile} = H \text{ structure} - 46\text{mm}$

$H \text{ foro a muro} = H \text{ struttura} - 11\text{mm}$
 $H \text{ wall hole} = H \text{ structure} - 11\text{mm}$

CYCLOS

B - Istruzioni di montaggio montanti a muro
B - Wall upright assembly instructions

B2

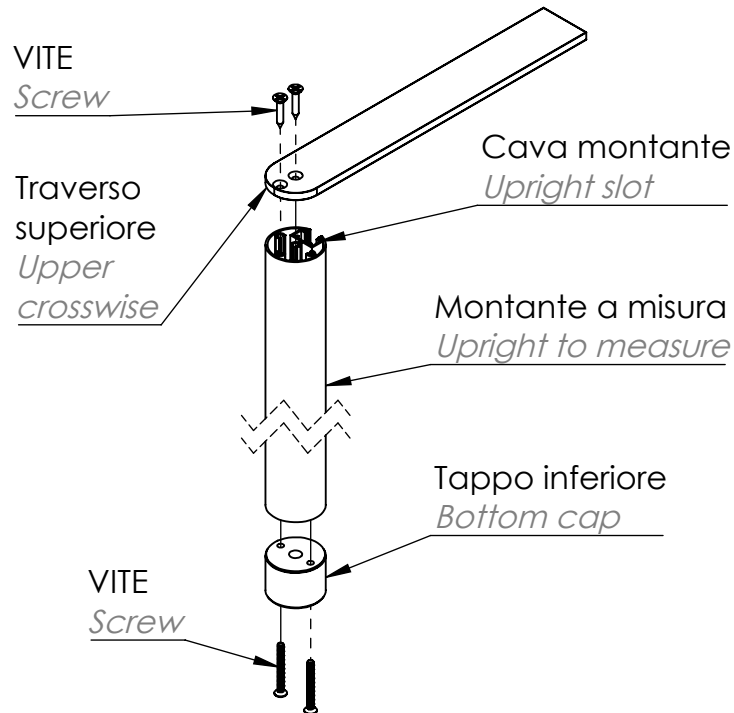


Tagliare il profilo del
montante a misura
*Cut the upright profile to
the desired dimension*

CYCLOS

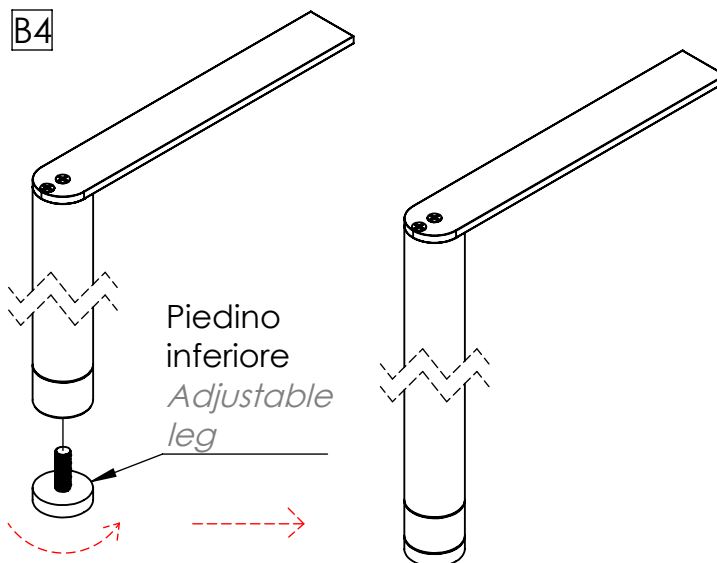
B - Istruzioni di montaggio montanti a muro *B - Wall upright assembly instructions*

B3 Parete non cablabile *Wall not wireable*



Avvitare nel montante tagliato a misura, il tappo inferiore e il traverso superiore, fare attenzione all'orientamento della cava del montante

Screw the lower cap and upper crosswise into the upright cut to size. Pay attention to the upright slot orientation



Avvitare il piedino inferiore fino alla totale chiusura con il tappo inferiore

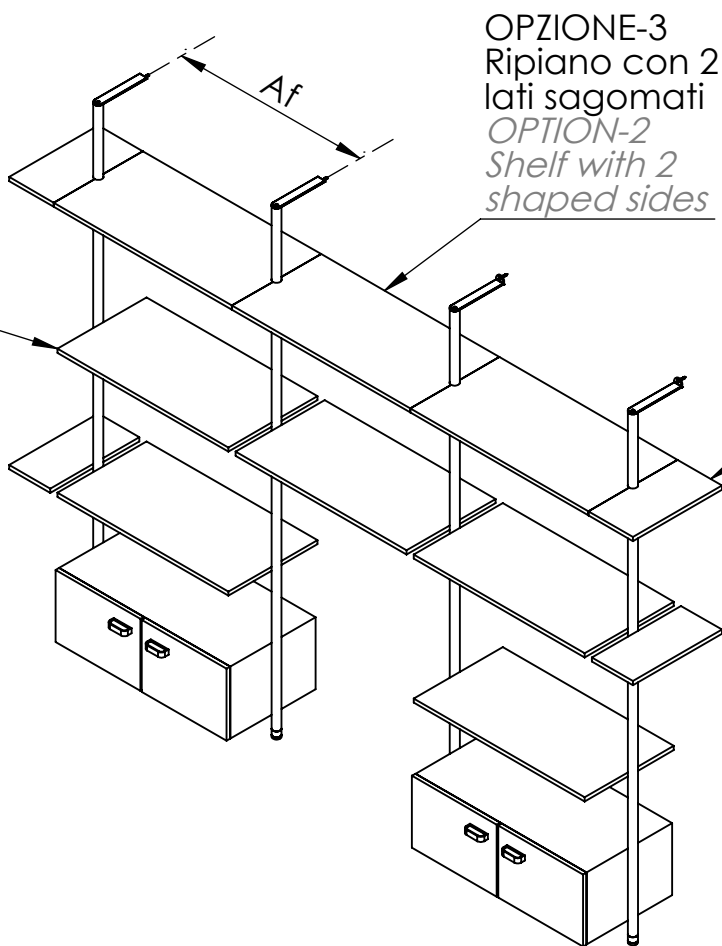
Screw the adjustable leg all the way in closing with the bottom cap

CYCLOS

B - Istruzioni di montaggio montanti a muro *B - Wall upright assembly instructions*

B5

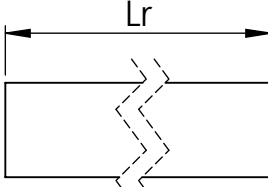
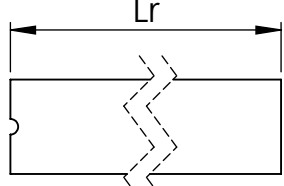
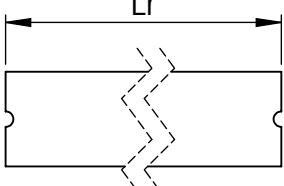
OPZIONE-1
Ripiano non
sagomato
*OPTION-1
Shelf not
shaped*



OPZIONE-3
Ripiano con 2
lati sagomati
*OPTION-2
Shelf with 2
shaped sides*

OPZIONE-2
Ripiano con 1
lato sagomato
*OPTION-2
Shelf with 1
shaped side*

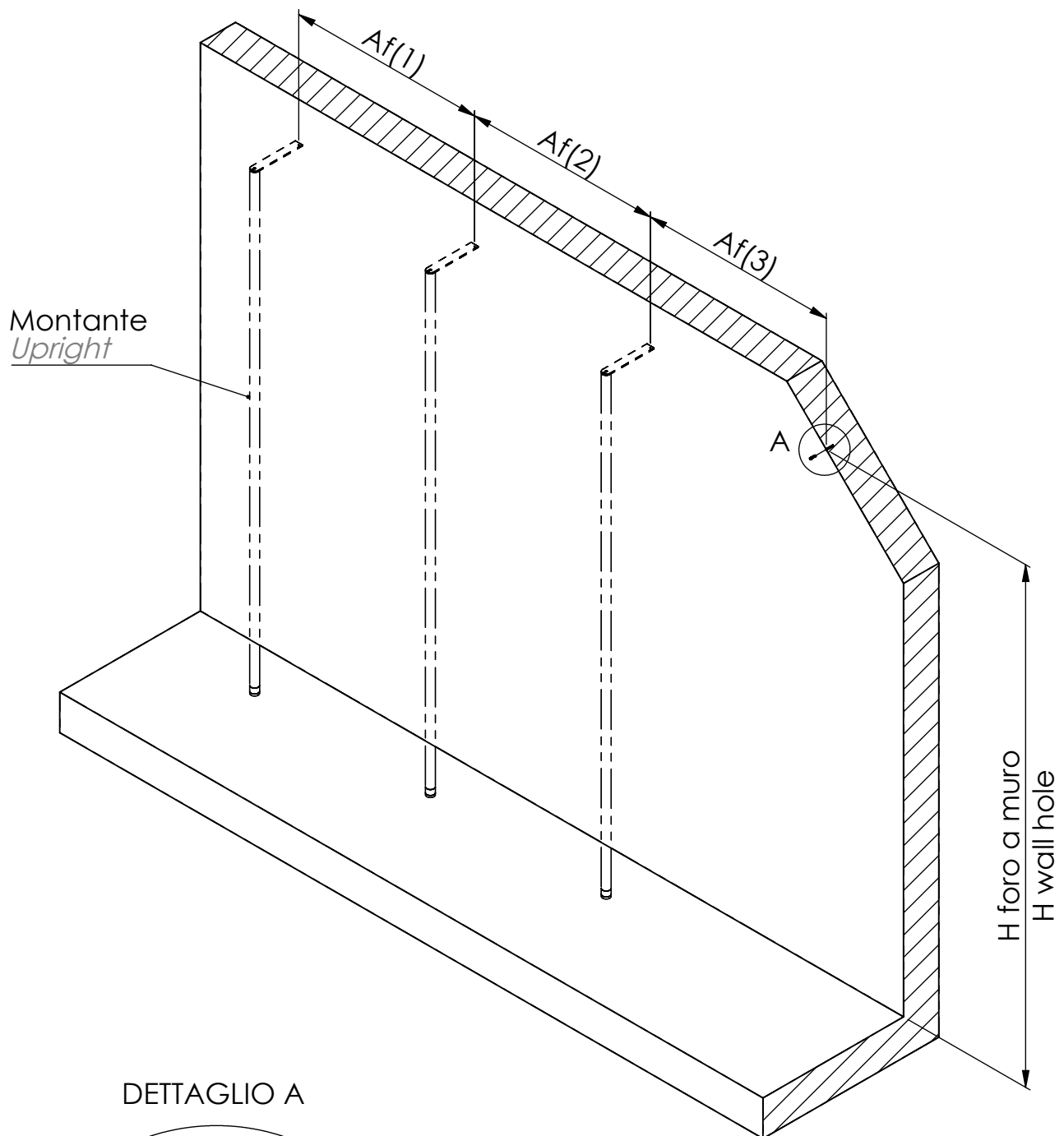
L'asse tra i montanti (Af)
dipende dal tipo di ripiano e
dalla sua larghezza, a
riguardo consultare la
tabella sottostante
*The axis between the
uprights (Af) depends on the
type of shelf and its width,
please consult the below
scheme*

Af (asse foratura) Af (drilling axis)	Lr (larghezza ripiano) Lr (shelf width)
$Af = Lr + 40\text{mm}$	 Ripiano non sagomato (OPZIONE-1) <i>Shelf not shaped (OPTION-1)</i>
$Af = Lr + 20\text{mm}$	 Ripiano con 1 lato sagomato (OPZIONE-2) <i>Shelf with 1 shaped side (OPTION-2)</i>
$Af = Lr$	 Ripiano con 2 lati sagomati (OPZIONE-3) <i>Shelf with 2 shaped sides (OPTION-3)</i>

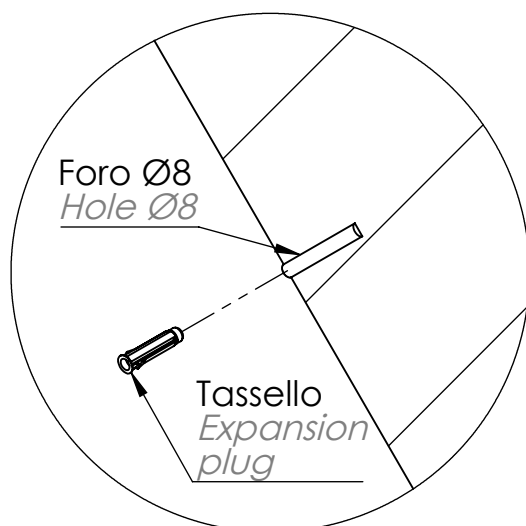
CYCLOS

B - Istruzioni di montaggio montanti a muro
B - Wall upright assembly instructions

B6



DETTAGLIO A

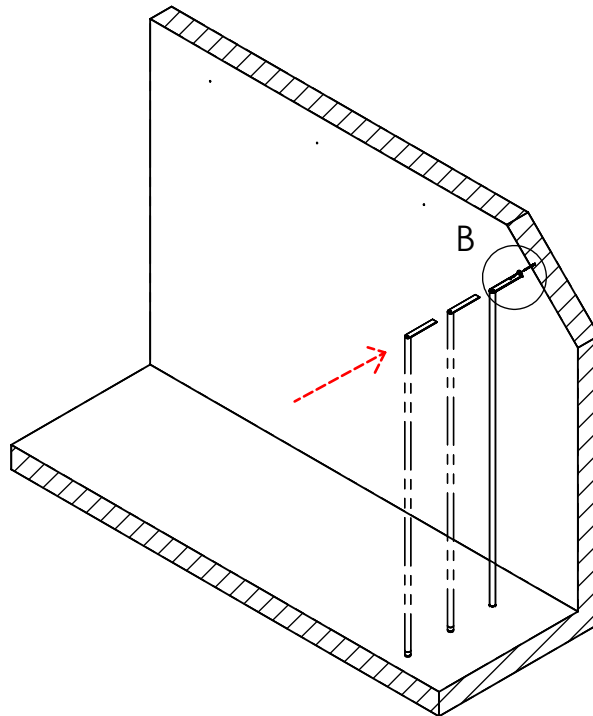


Forare il muro con punta Ø8 in base alle misure precedentemente calcolate e inserire un tassello per ogni foro
Drill the wall with a Ø8 drill bit according to the previously calculated measurements and insert a plug into each hole

CYCLOS

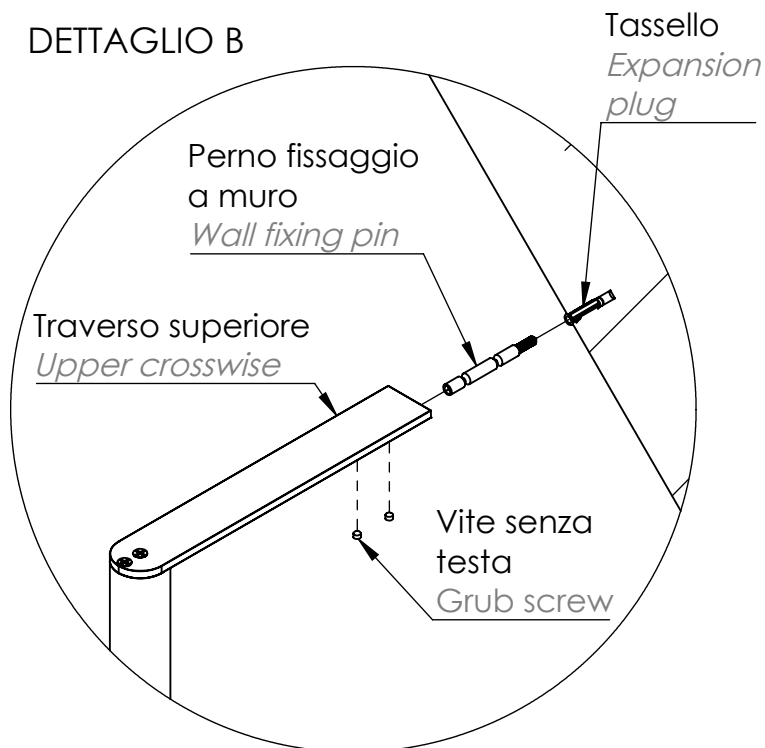
B - Istruzioni di montaggio montanti a muro *B - Wall upright assembly instructions*

B7



Parete non cablabile
Wall not wireable

DETTAGLIO B

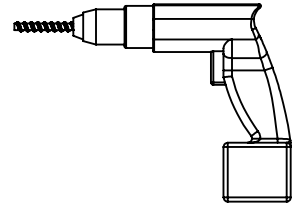
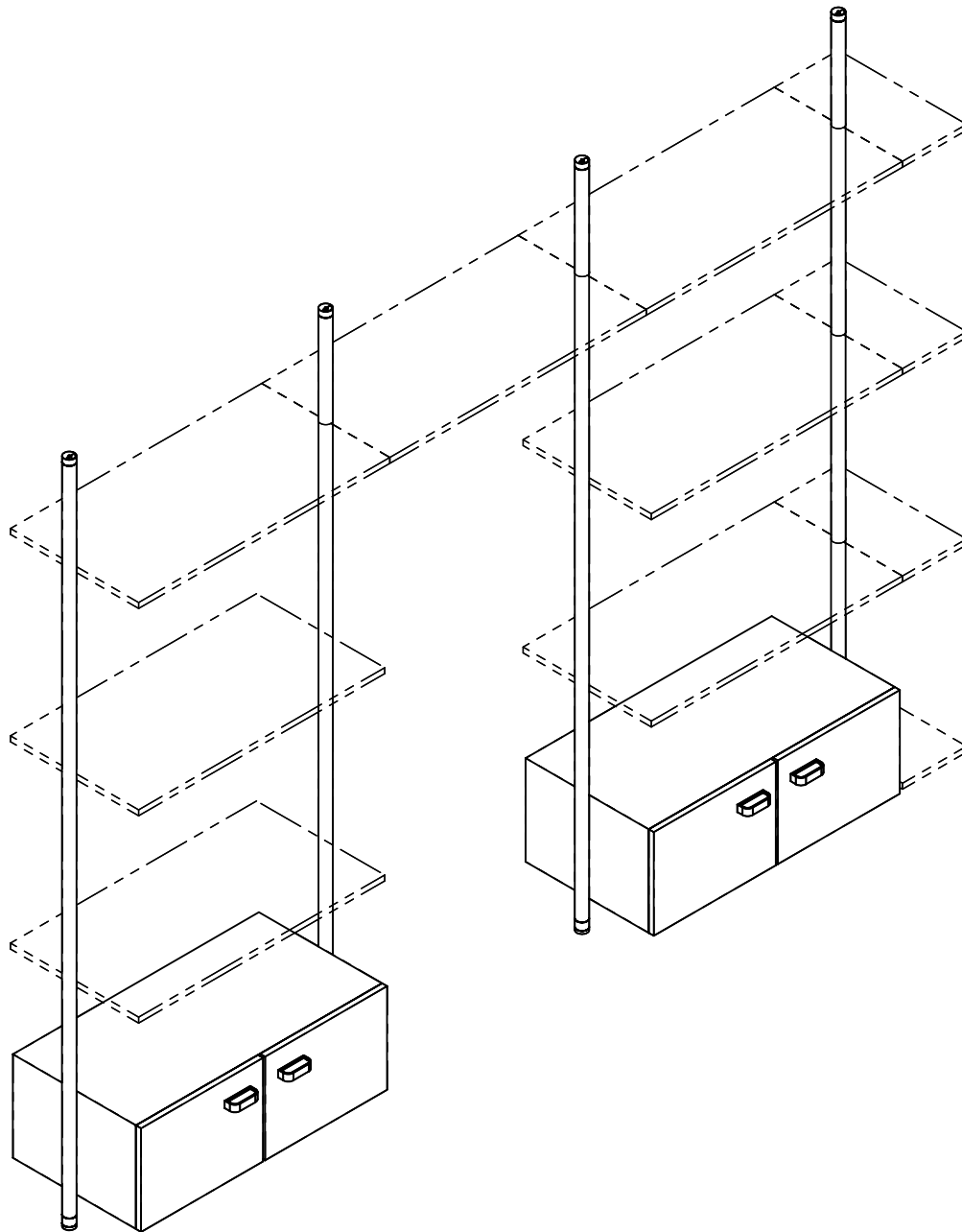


Avvitare il perno fissaggio a muro nel tassello, infilare il traverso superiore nel perno e avvitare le viti senza testa nel traverso superiore, per bloccare il perno al montante

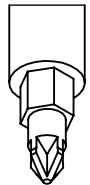
Screw the wall fixing pin into the plug, insert the upper crosspiece into the pin and screw the grub screws into the upper crosspiece, to lock the pin into the upright

CYCLOS

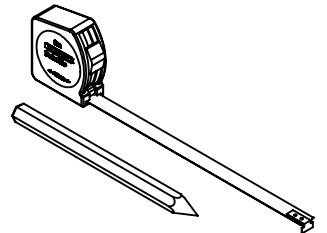
D - Istruzioni di montaggio del mobile
D - Cabinet assembly instructions



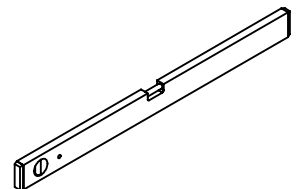
avvitatore
screwdriver



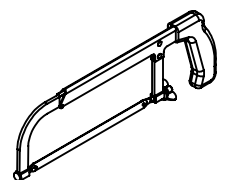
inserto a stella
Star shape insert



incisore e metro
engraver and meter



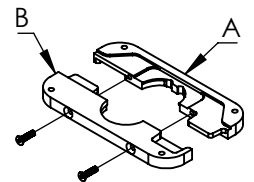
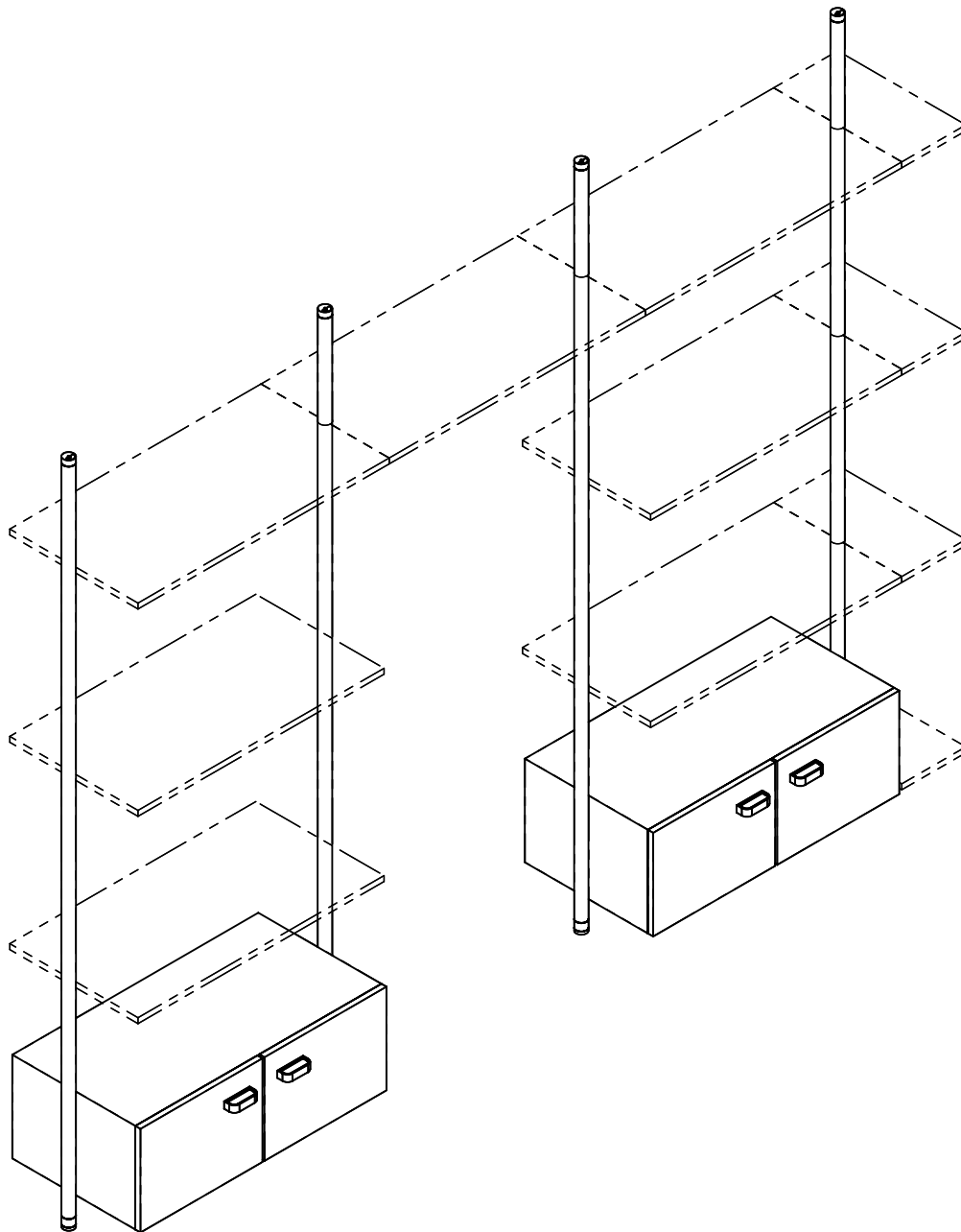
livella
level



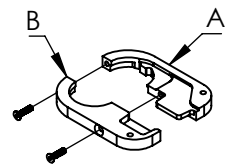
sega
saw

CYCLOS

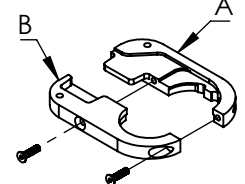
D - Istruzioni di montaggio del mobile
D - Cabinet assembly instructions



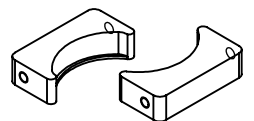
Morsetto centrale
Central clamp



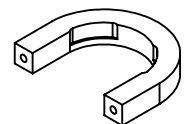
Morsetto terminale destro
Right end clamp



Morsetto terminale sinistro
Left end clamp



Distanziale per mobile
centrale
*Spacer for central
cabinet*



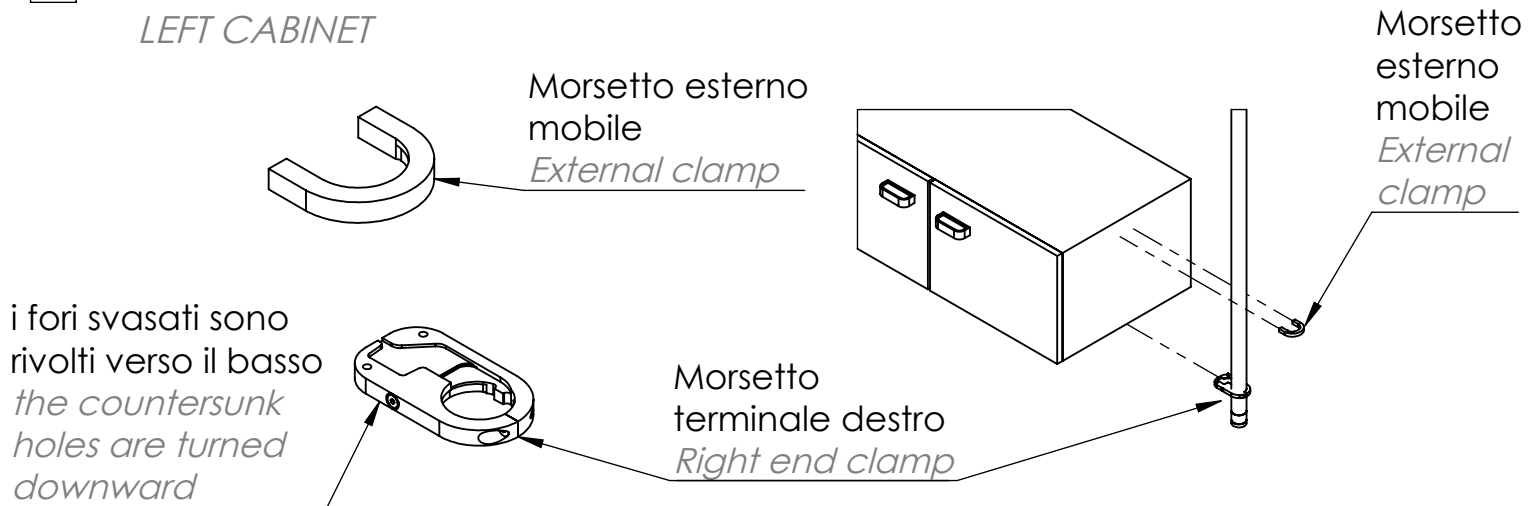
Morsetto esterno
per mobile
External clamp

F
E
R
R
A
M
E
N
T
A

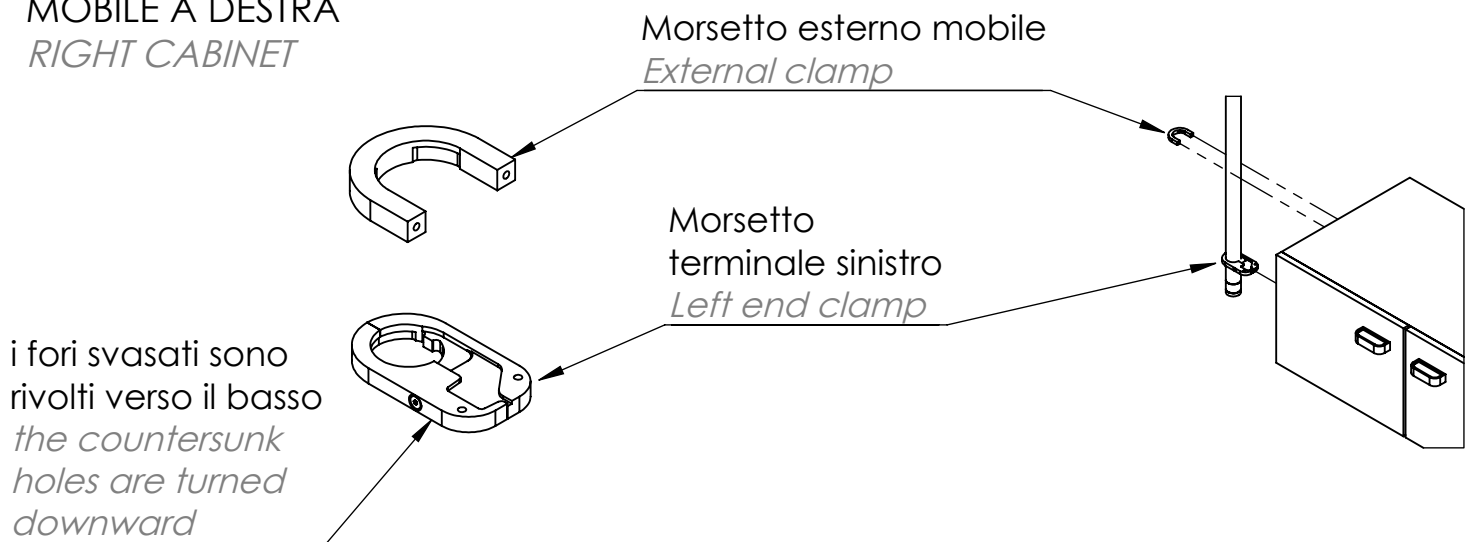
CYCLOS

D - Istruzioni di montaggio del mobile *D - Cabinet assembly instructions*

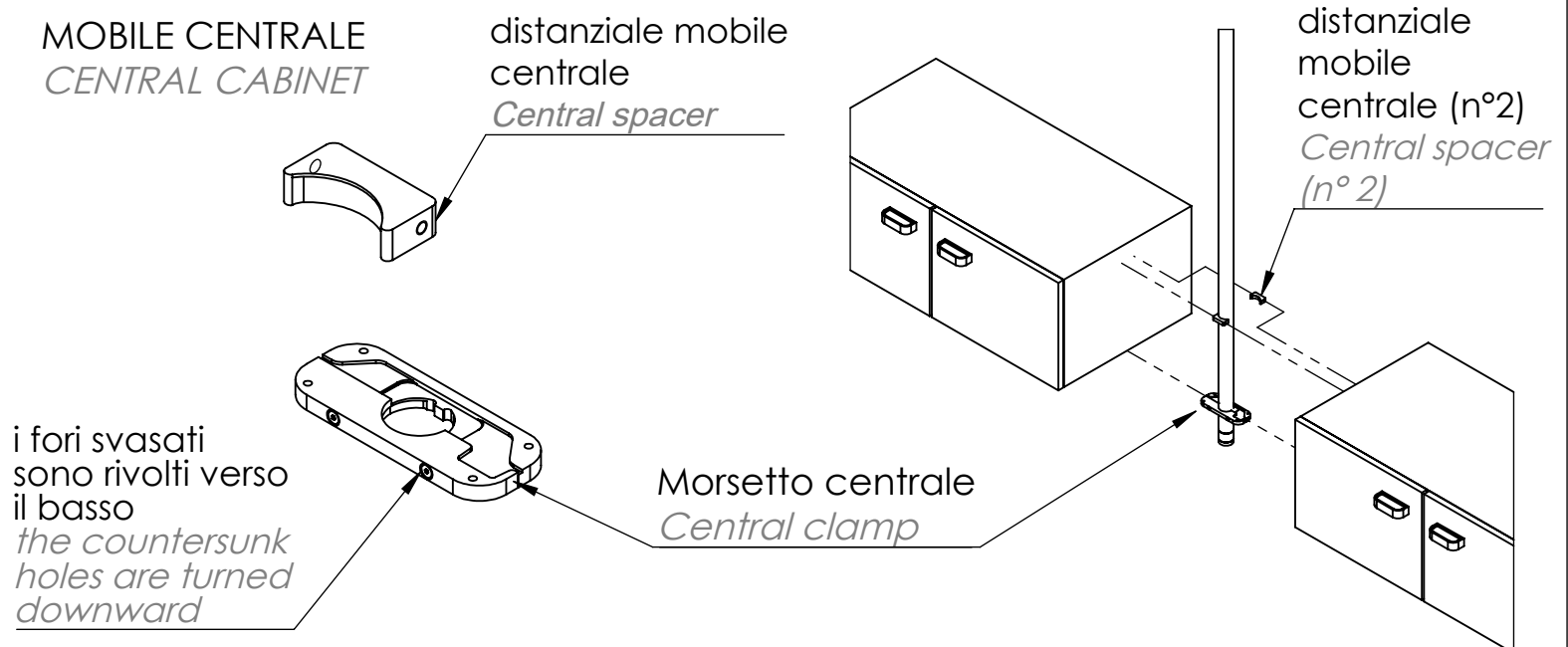
D1 MOBILE A SINISTRA *LEFT CABINET*



MOBILE A DESTRA *RIGHT CABINET*



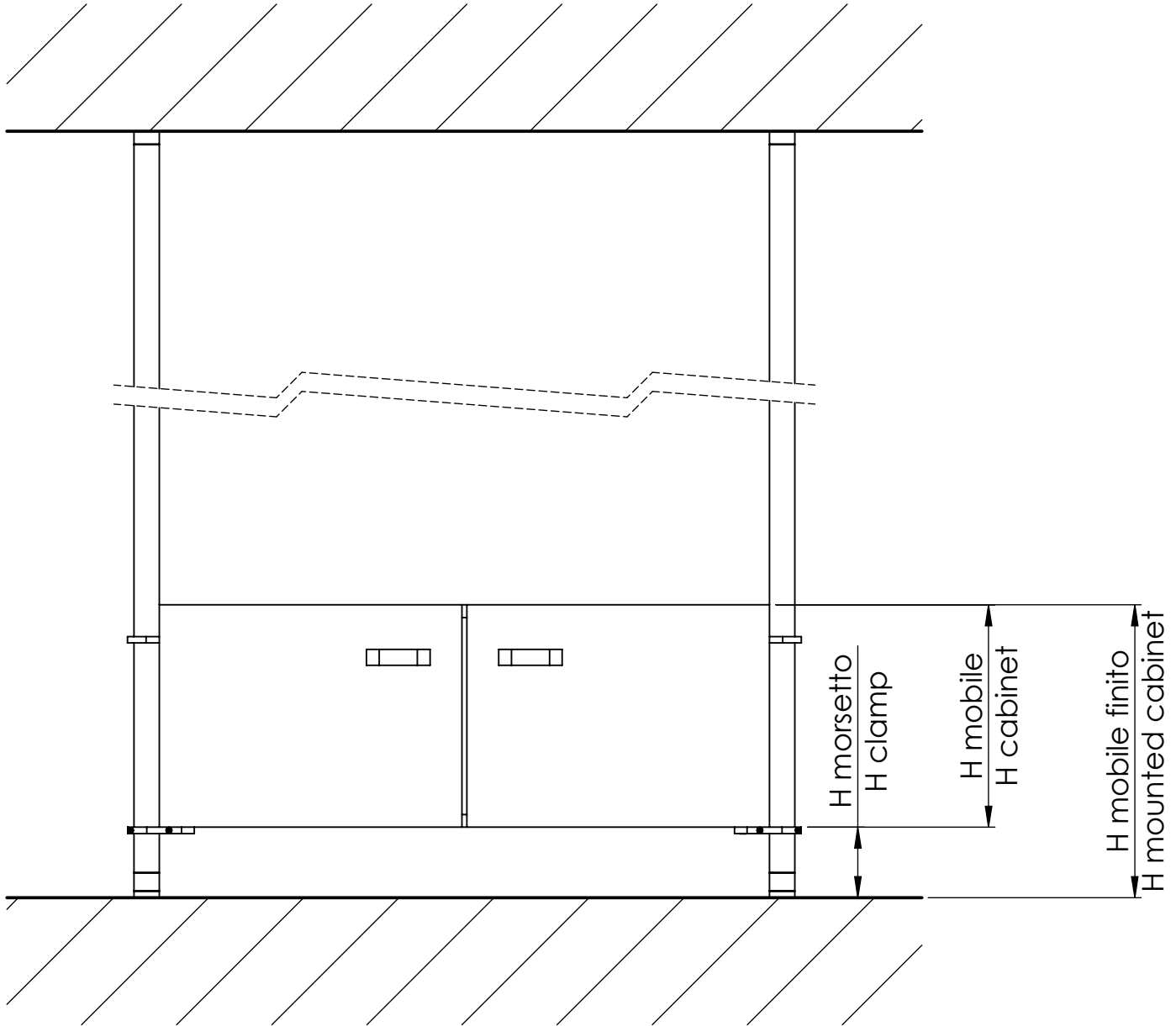
MOBILE CENTRALE *CENTRAL CABINET*



CYCLOS

D - Istruzioni di montaggio del mobile
D - Cabinet assembly instructions

D2

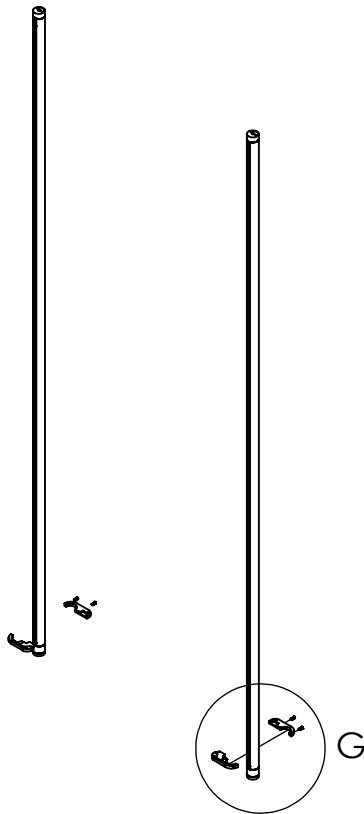


$H \text{ morsetto} = H \text{ mobile finito} - H \text{ mobile}$
 $H \text{ clamp} = H \text{ mounted cabinet} - H \text{ cabinet}$

CYCLOS

D - Istruzioni di montaggio del mobile
D - Cabinet assembly instructions

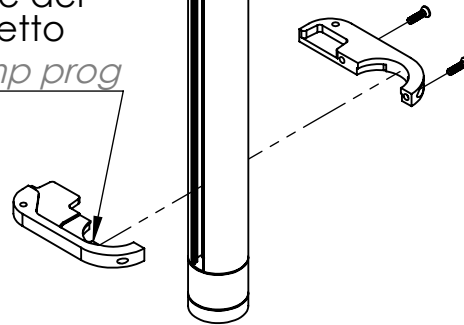
D3



Cava del
montante
Upright Slot

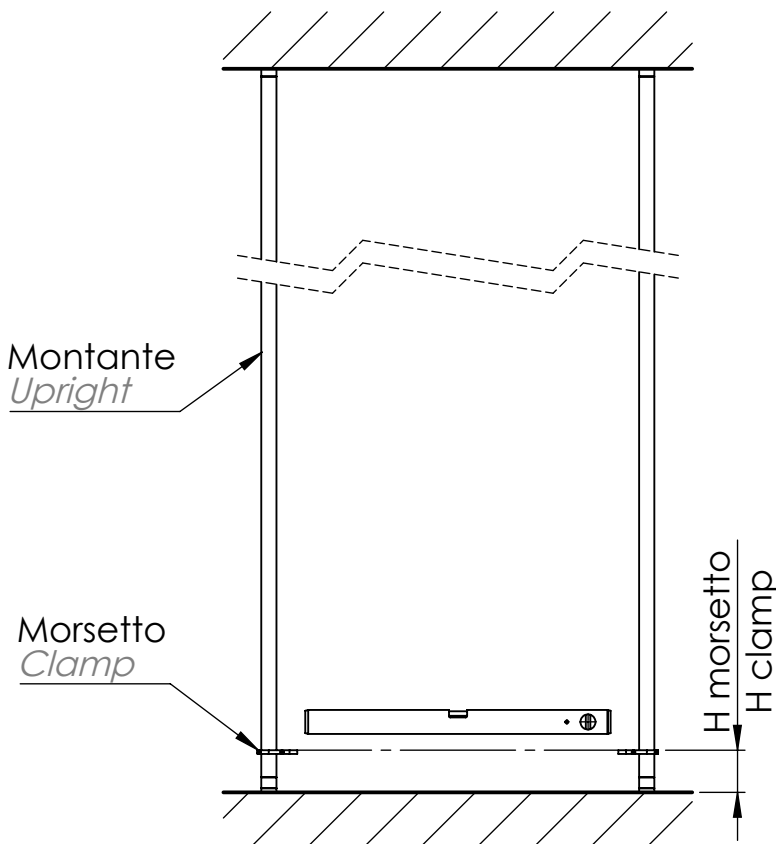
Dente del
morsetto
Clamp prog

DETTAGLIO G



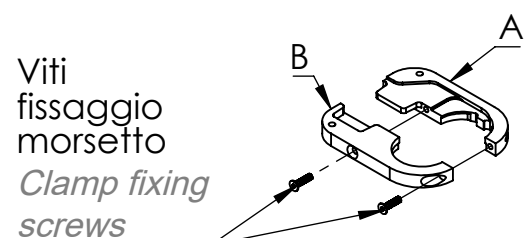
Posizionare i morsetti alla corretta altezza
precedentemente calcolata, con un
fissaggio morbido delle viti
*Position the clamps at the previously
calculated correct height, by a soft fixing
of the screws*

D4



Controllare la planarità dei morsetti dello
stesso mobile
*Check the flatness of the clamps of the
same piece of furniture*

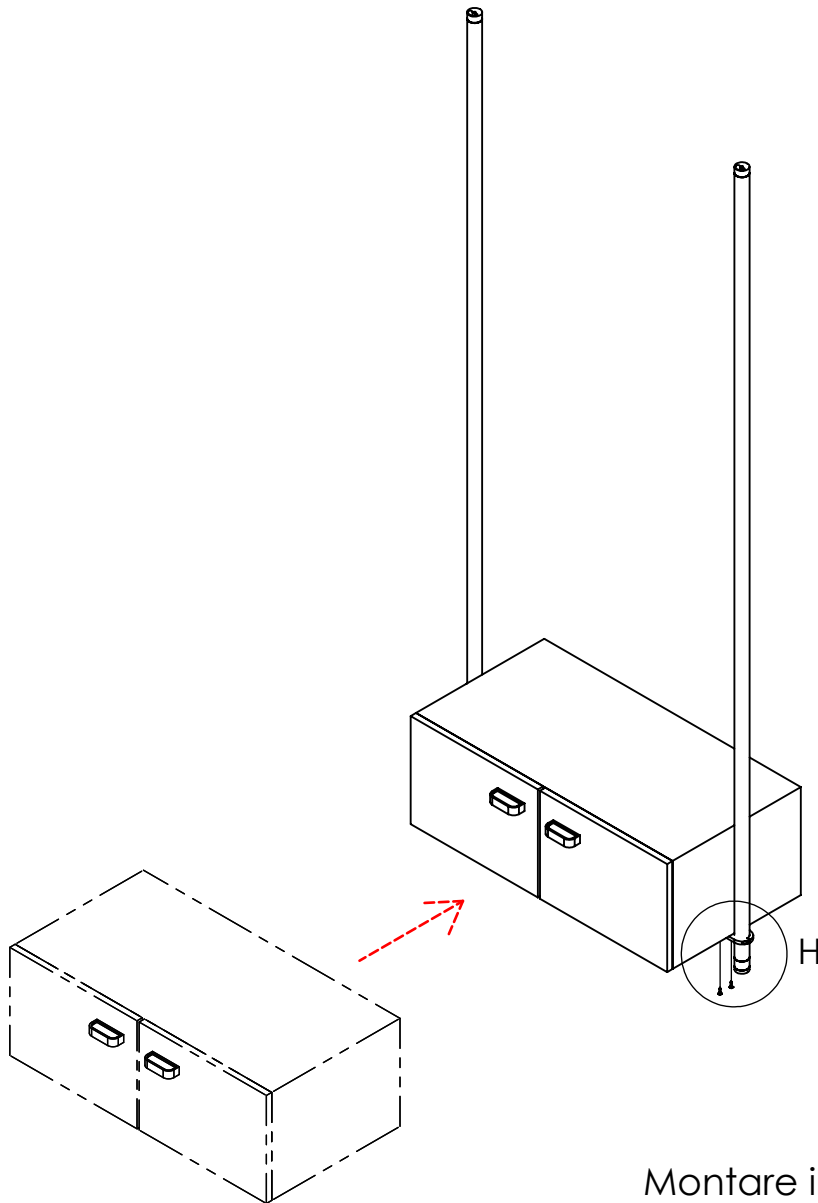
Avvitare le viti che fermano le due parti (A e
B) del morsetto ancorandolo stabilmente al
montante
*Tighten the screws that secure the two
parts (A and B) of the clamp anchoring it
stably to the upright*



CYCLOS

D - Istruzioni di montaggio del mobile
D - Cabinet assembly instructions

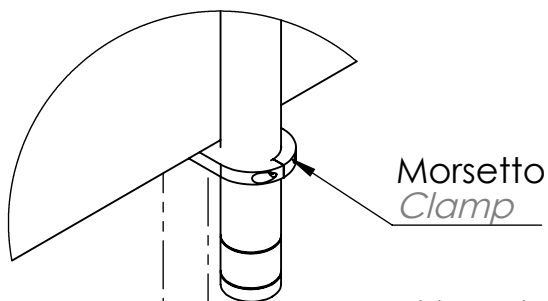
D5



Montare il mobile appoggiando il fondo al morsetto e fissarlo con 2 viti al morsetto stesso

Assemble the cabinet, place it on the clamps and secure the bottom by screwing it at the clamps themselves

DETTAGLIO H



Viti per il fissaggio del fondo del mobile con il morsetto

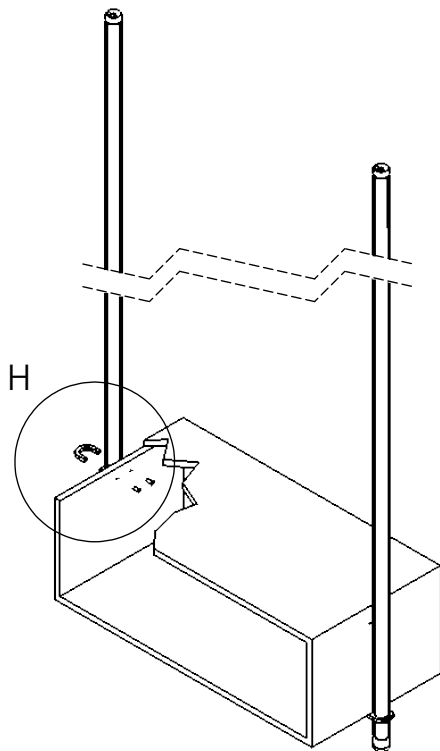
Screws for fixing the bottom of the cabinet to the clamp

CYCLOS

D - Istruzioni di montaggio del mobile
D - Cabinet assembly instructions

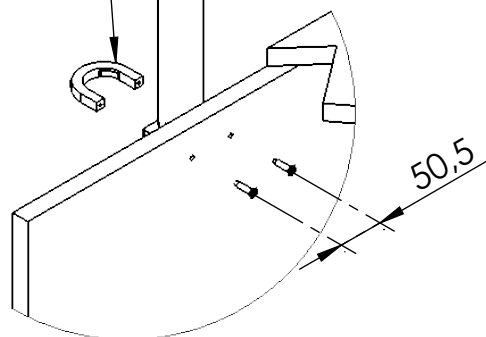
D6

Per fianco terminale mobile
For cabinet end side



DETTAGLIO H

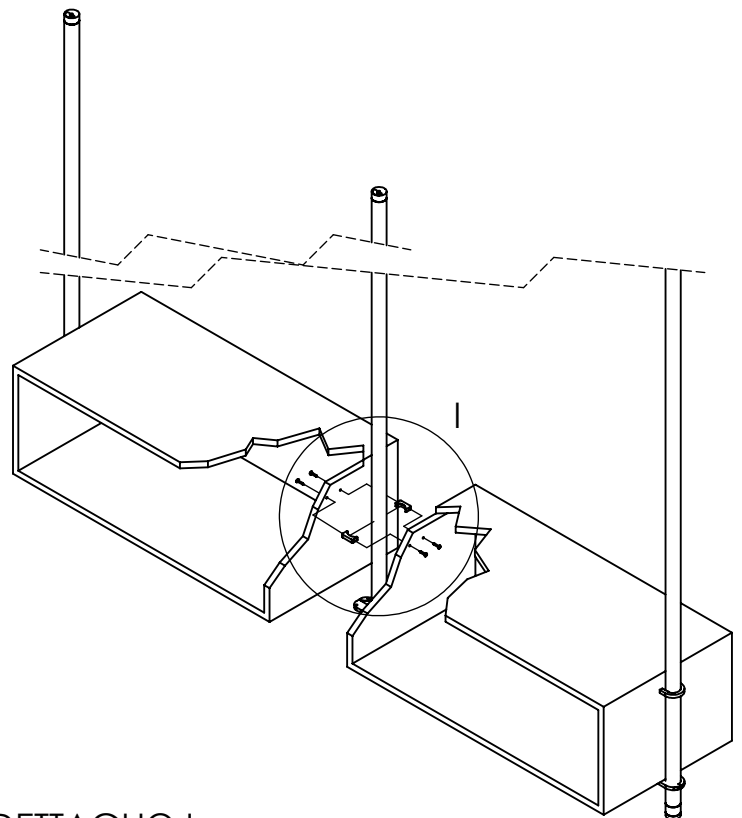
Morsetto esterno mobile
External clamp



Forare il fianco del mobile con asse 50,5mm, all'altezza voluta del morsetto esterno mobile e fissare il fianco al morsetto con le viti

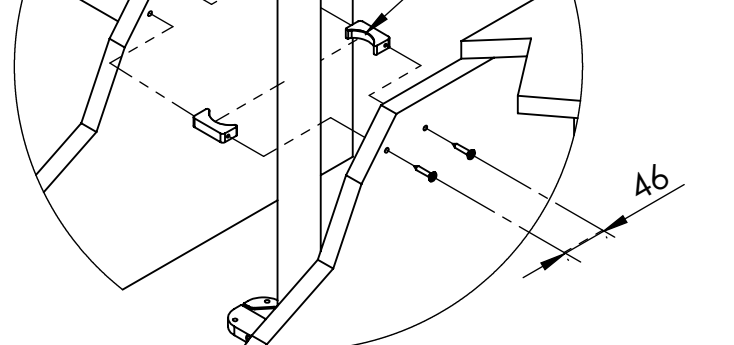
Drill the cabinet side, at the desired height of the clamp, with an interaxis of 50,5 mm, and secure the side to the clamp with screws

Per fianco centrale mobile
For cabinet central side



DETTAGLIO I

Distanziale mobile centrale
Central cabinet spacer



Forare i fianchi intermedi con asse 46mm, all'altezza voluta del distanziale mobile centrale e fissare i fianchi ai distanziali con le viti

Drill the intermediate sides, at the desired height of the intermediate spacer, with a 46mm interaxis, and secure the sides to the spacers with the screws