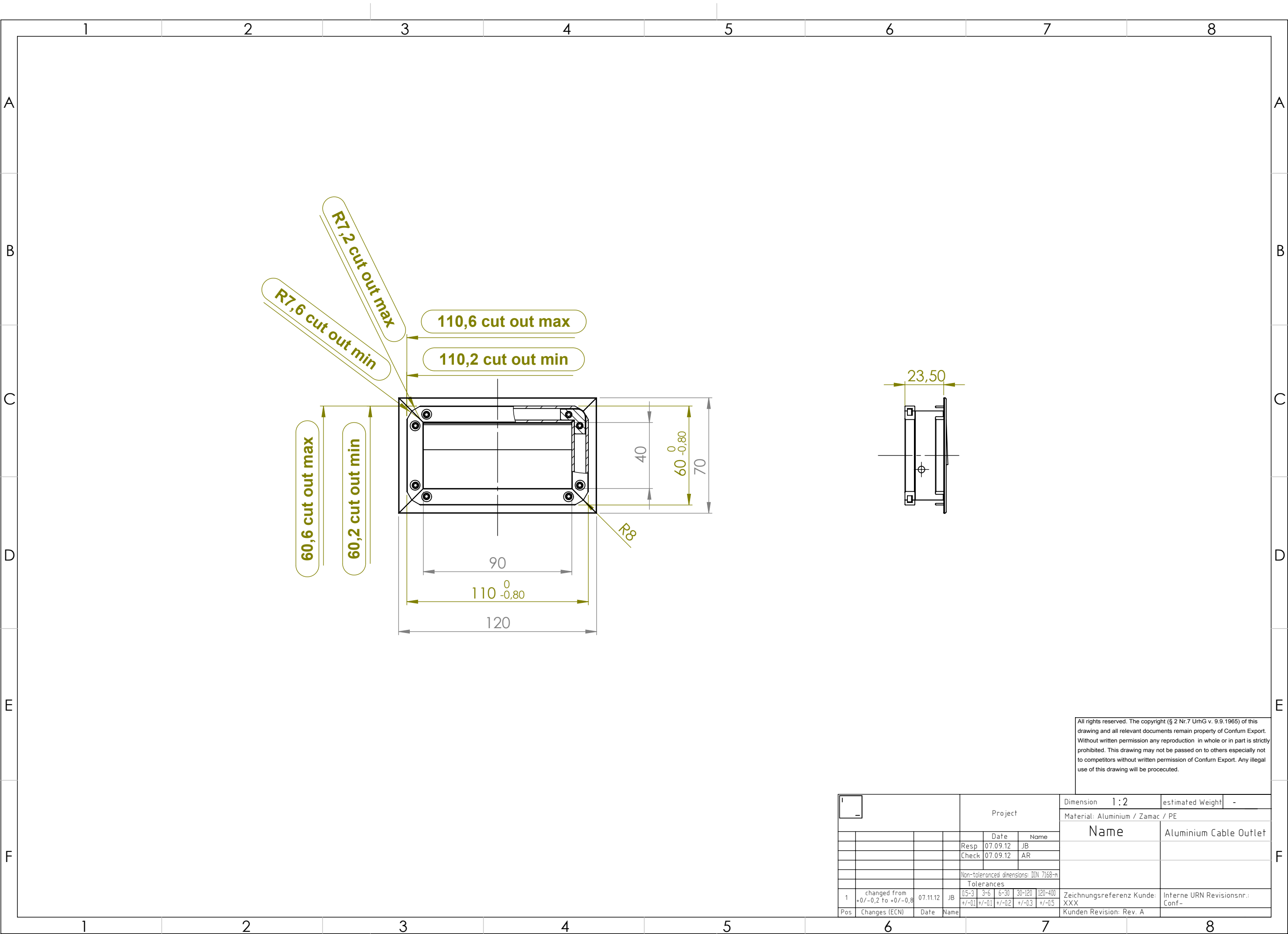


All rights reserved. The copyright (§ 2 Nr.7 UrhG v. 9.9.1965) of this drawing and all relevant documents remain property of Conform Export. Without written permission any reproduction in whole or in part is strictly prohibited. This drawing may not be passed on to others especially not to competitors without written permission of Conform Export. Any illegal use of this drawing will be prosecuted.

<div><div></div><div></div></div>		Project				Dimension 1:2		estimated Weight -			
						Material: Aluminium / Zamac / PE					
						Name		Aluminium Cable Outlet			
				Resp	07.09.12	JB					
				Check	07.09.12	AR					
				Non-toleranced dimensions: DIN 7168-m							
				Tolerances							
1	changed from +0/-0,2 to +0/-0,8		07.11.12	JB	05-3 +/-01	3-6 +/-01	6-30 +/-02	30-120 +/-03	120-400 +/-05	Zeichnungsreferenz Kunde: XXX	Interne URN Revisionsnr.: Conf-
Pos	Changes (ECN)		Date	Name						Kunden Revision: Rev. A	



All rights reserved. The copyright (§ 2 Nr.7 UrhG v. 9.9.1965) of this drawing and all relevant documents remain property of Conform Export. Without written permission any reproduction in whole or in part is strictly prohibited. This drawing may not be passed on to others especially not to competitors without written permission of Conform Export. Any illegal use of this drawing will be prosecuted.

<div><div></div><div></div></div>				Project				Dimension 1:2		estimated Weight -	
								Material: Aluminium / Zamac / PE			
								Name		Aluminium Cable Outlet	
				Resp 07.09.12 JB							
				Check 07.09.12 AR							
				Non-toleranced dimensions: DIN 7168-m							
				Tolerances							
1				changed from +0/-0,2 to +0/-0,8		07.11.12 JB		05-3 3-6 6-30 30-120 120-400		Zeichnungsreferenz Kunde: XXX	
								+/-01 +/-01 +/-02 +/-03 +/-05			
Pos				Changes (ECN)		Date Name		Kunden Revision: Rev. A		Interne URN Revisionsnr.: Conf-	

A

B

C

D

E

F

A

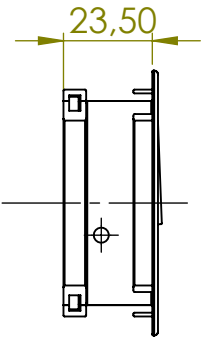
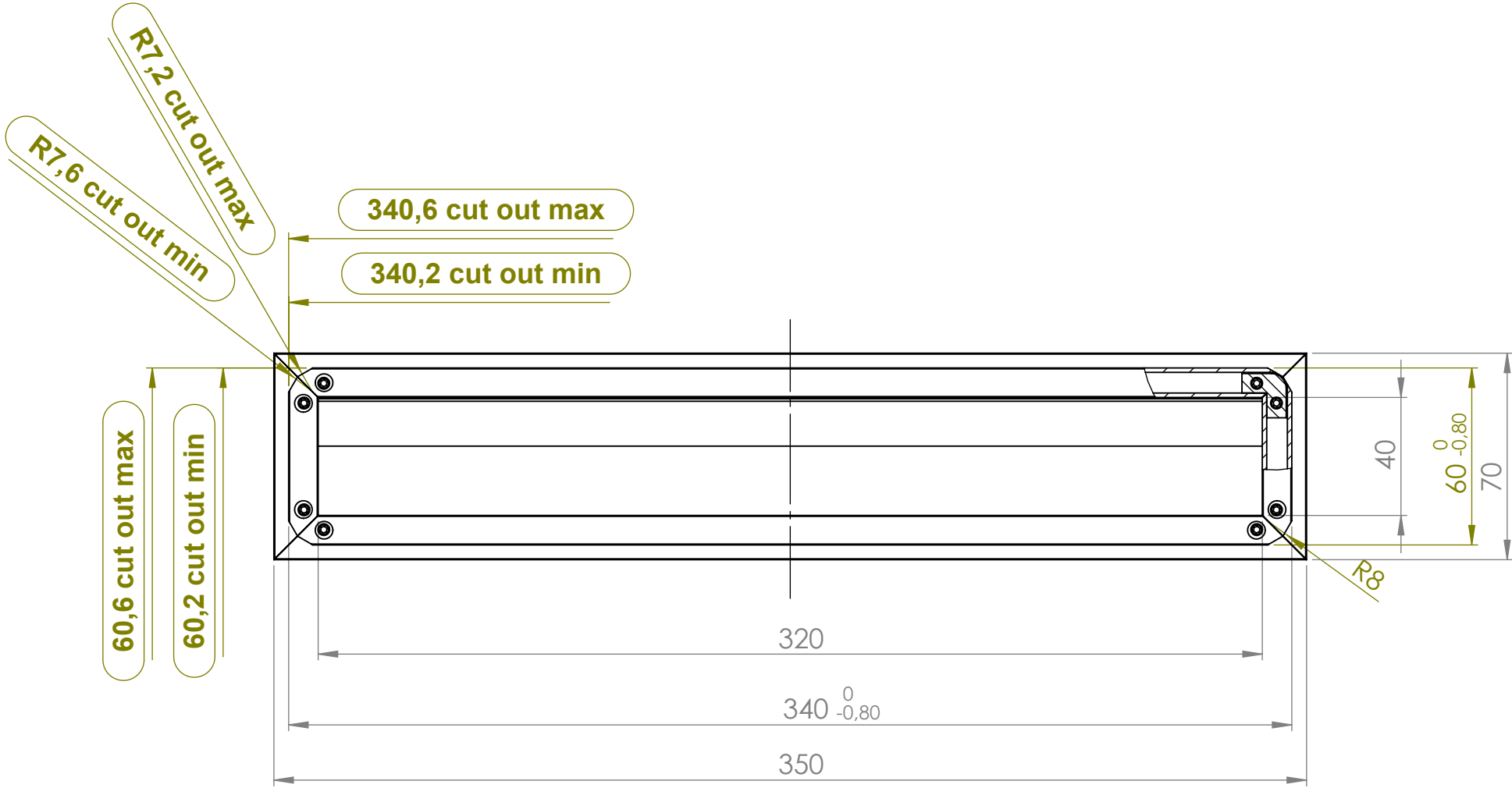
B

C

D

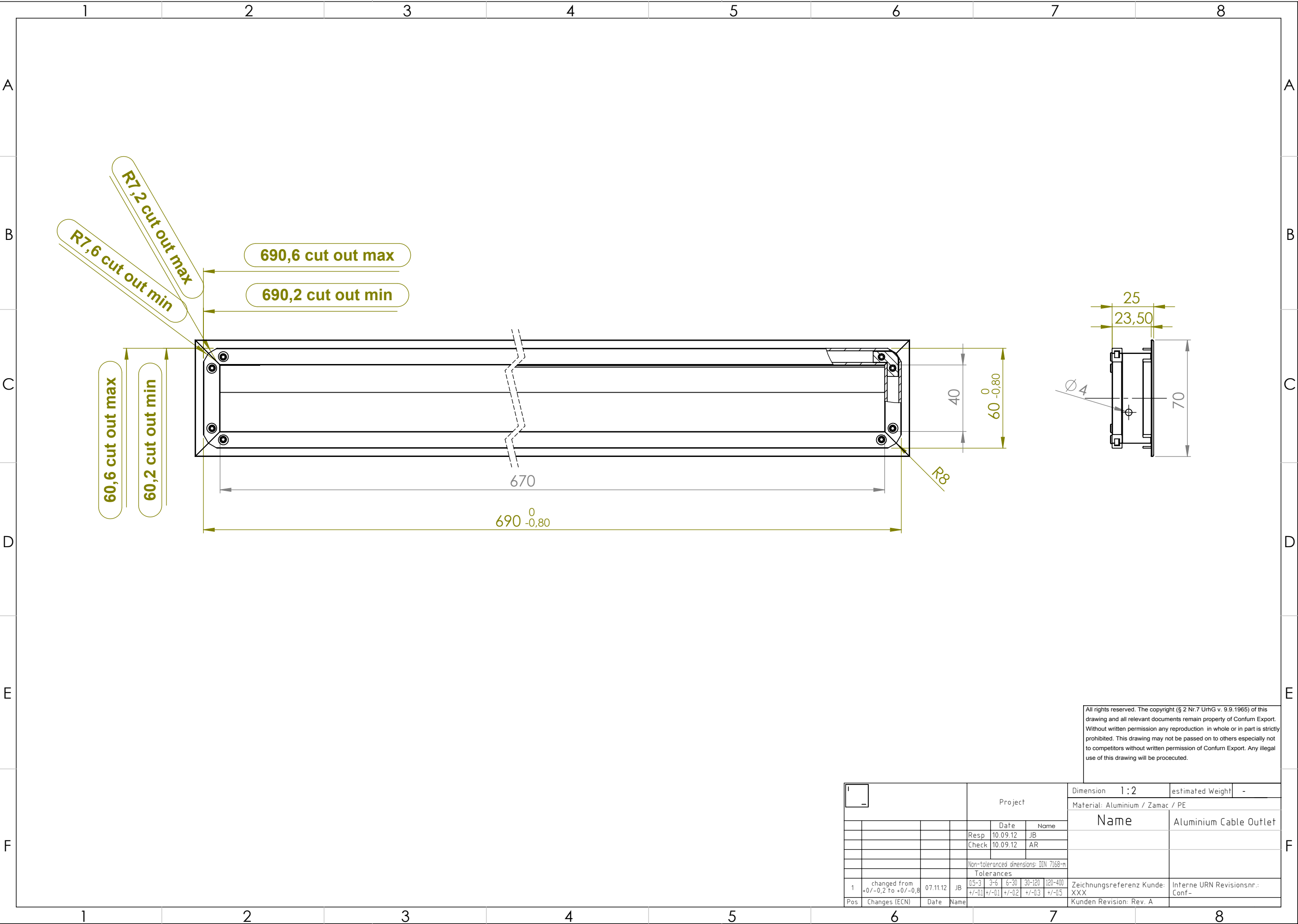
E

F



All rights reserved. The copyright (§ 2 Nr.7 UrhG v. 9.9.1965) of this drawing and all relevant documents remain property of Conform Export. Without written permission any reproduction in whole or in part is strictly prohibited. This drawing may not be passed on to others especially not to competitors without written permission of Conform Export. Any illegal use of this drawing will be prosecuted.

<div><div></div><div></div></div>				Project				Dimension 1:2		estimated Weight -	
								Material: Aluminium / Zamac / PE			
								Name		Aluminium Cable Outlet	
				Resp 10.09.12 JB							
				Check 10.09.12 AR							
				Non-toleranced dimensions: DIN 7168-m							
				Tolerances							
1				changed from +0/-0,2 to +0/-0,8		07.11.12 JB		05-3 3-6 6-30 30-120 120-400		Zeichnungsreferenz Kunde: Interne URN Revisionsnr.: XXX	
								+/-01 +/-01 +/-02 +/-03 +/-05			
Pos				Changes (ECN)		Date Name		Kunden Revision: Rev. A			



All rights reserved. The copyright (§ 2 Nr.7 UrhG v. 9.9.1965) of this drawing and all relevant documents remain property of Conform Export. Without written permission any reproduction in whole or in part is strictly prohibited. This drawing may not be passed on to others especially not to competitors without written permission of Conform Export. Any illegal use of this drawing will be prosecuted.

<div><div></div><div>-</div></div>		Project				Dimension 1:2		estimated Weight -	
						Material: Aluminium / Zamac / PE			
						Name		Aluminium Cable Outlet	
				Resp 10.09.12		JB			
				Check 10.09.12		AR			