

Montageanleitung Mounting instructions Instructions de montage

EKU COMBINO® 65|80 H FS OL 2T



Schweizer Qualität - getestet nach EN 15706
Swiss Quality - tested in accordance with EN 15706
Qualité suisse - testée selon EN 15706

Produkt-Highlights



Komfort

Leichter, flüsterleiser Lauf mit EKU Comfort Rolle und spielfreier Führung

Raffinierte Dämpfung auch für Mitteltüren sowie innovative Anordnung der Komponenten erlauben spielend leichte Bedienung

Technische Vorgaben



max. 80 kg



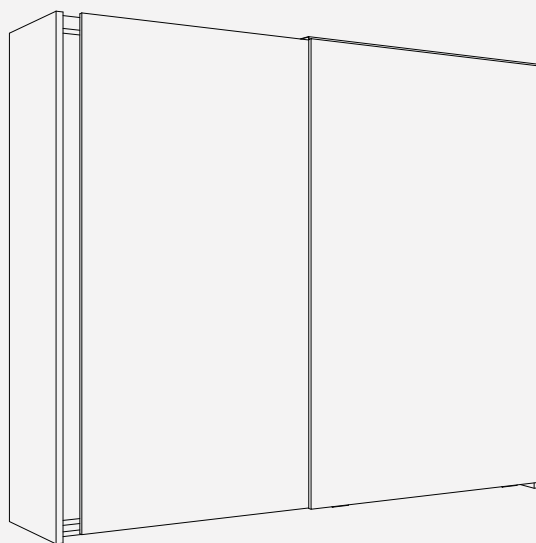
max. 2800 mm



max. 1600 mm



19 – 40 mm



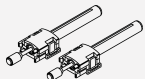
Garnitur für 2 Holztüren

	Nr.
EKU Combino 80 H FS ol, Türstärke 19-40 mm, für 2 Türen	055.3205.073
EKU Combino 65 H FS ol, Türdicke 19-40 mm, für 2 Türen	055.3205.071


Schienen-Sets

	Nr.
EKU Combino 65/80 H FS ol, 2500 mm	055.3211.071
EKU Combino 65/80 H FS ol, 4000 mm	055.3211.072

Zubehör

	Nr.
 Dämpfung Führung (Empfohlen ab Türverhältnis grösser als 1:3. Kann nur mit einem Dämpfeinzug eingesetzt werden.)	055.3219.051

Verstärkungsprofil

	mm	Nr.
	2500	055.3185.250
	4000	055.3185.400

Dämpfeinzug

	Nr.
EKU Combino 80 H FS ol, bis 80 kg, 4 Stück	055.3206.072
EKU Combino 65 H FS ol, bis 65 kg, 2 Stück	055.3206.071

Product highlights



Comfort

Smooth, silent running with EKU Comfort roller and guide with zero clearance

Sophisticated soft close also for center doors and an innovative arrangement of the components make for very easy operation

Technical specifications



Max. 80 kg (176 lbs.)



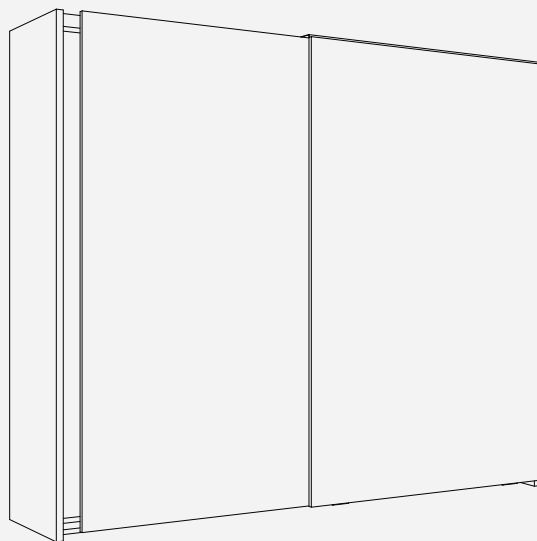
Max. 2800 mm (9'2 1/4")



Max. 1600 mm (5'3")



19 – 40 mm (3/4" to 1 9/16")



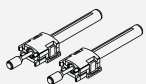
Set for 2 wooden doors

	Nr.
EKU Combino 80 H FS ol, door thickness 19-40 mm (3/4"-1 9/16"), for 2 doors	055.3205.073
EKU Combino 65 H FS ol, door thickness 19-40 mm (3/4"-1 9/16"), for 2 doors	055.3205.071


Track sets

	Nr.
EKU Combino 65/80 H FS ol, 2500 mm (8'2 7/16")	055.3211.071
EKU Combino 65/80 H FS ol, 4000 mm (13'1 15/32")	055.3211.072

Accessories

	Nr.
 Soft close for guide (recommended from a door ratio bigger than 1:3. Can only be used with a soft close.)	055.3219.051

Reinforcement profile

		mm (inch)	Nr.
 Reinforcement profile, aluminum, anodized, pre-drilled, recommended from a span width of 800 mm (2'7 1/2")		2500 (8'2 7/16")	055.3185.250
		4000 (13'1 15/32")	055.3185.400

Soft close

	Nr.
EKU Combino 80 H FS ol, up to 80 kg (176 lbs.), 4 pieces	055.3206.072
EKU Combino 65 H FS ol, up to 65 kg (143 lbs.), 2 pieces	055.3206.071

Produits phares



Confort

Coulissement léger et silencieux avec EKU Galet de Confort et un guidage sans jeu

Amortissement raffiné aussi pour les portes centrales ainsi qu'un ordre innovant des composants permettent une manipulation aisée

Spécifications techniques



Max. 80 kg



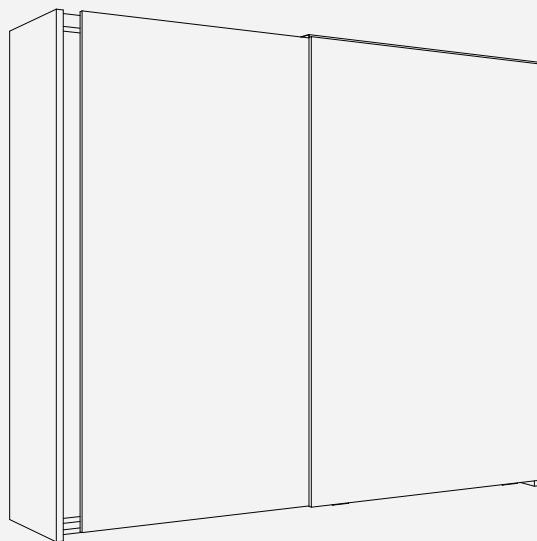
Max. 2800 mm



Max. 1600 mm




19 – 40 mm



Garniture pour 2 portes en bois

	Nr.
EKU Combino 80 H FS ol, épaisseur de porte 19-40 mm, pour 2 portes	055.3205.073
EKU Combino 65 H FS ol, épaisseur de porte 19-40 mm, pour 2 portes	055.3205.071

Profil de renforcement

	mm	Nr.
	2500	055.3185.250
	4000	055.3185.400

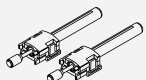
Kits de rails

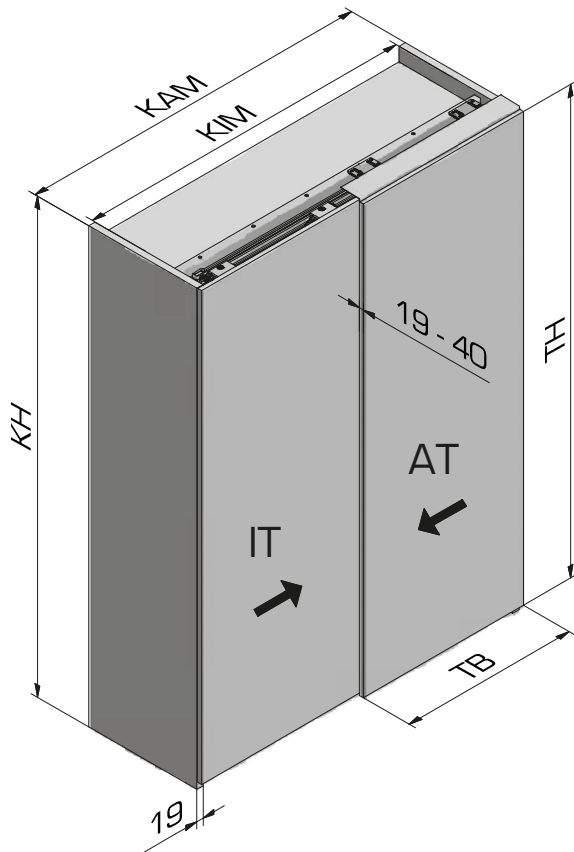
	Nr.
EKU Combino 65/80 H FS ol, 2500 mm	055.3211.071
EKU Combino 65/80 H FS ol, 4000 mm	055.3211.072

Amortissement

	Nr.
EKU Combino 80 H FS ol, jusqu'à 80 kg, 4 pièces	055.3206.072
EKU Combino 65 H FS ol, jusqu'à 65 kg, 2 pièces	055.3206.071

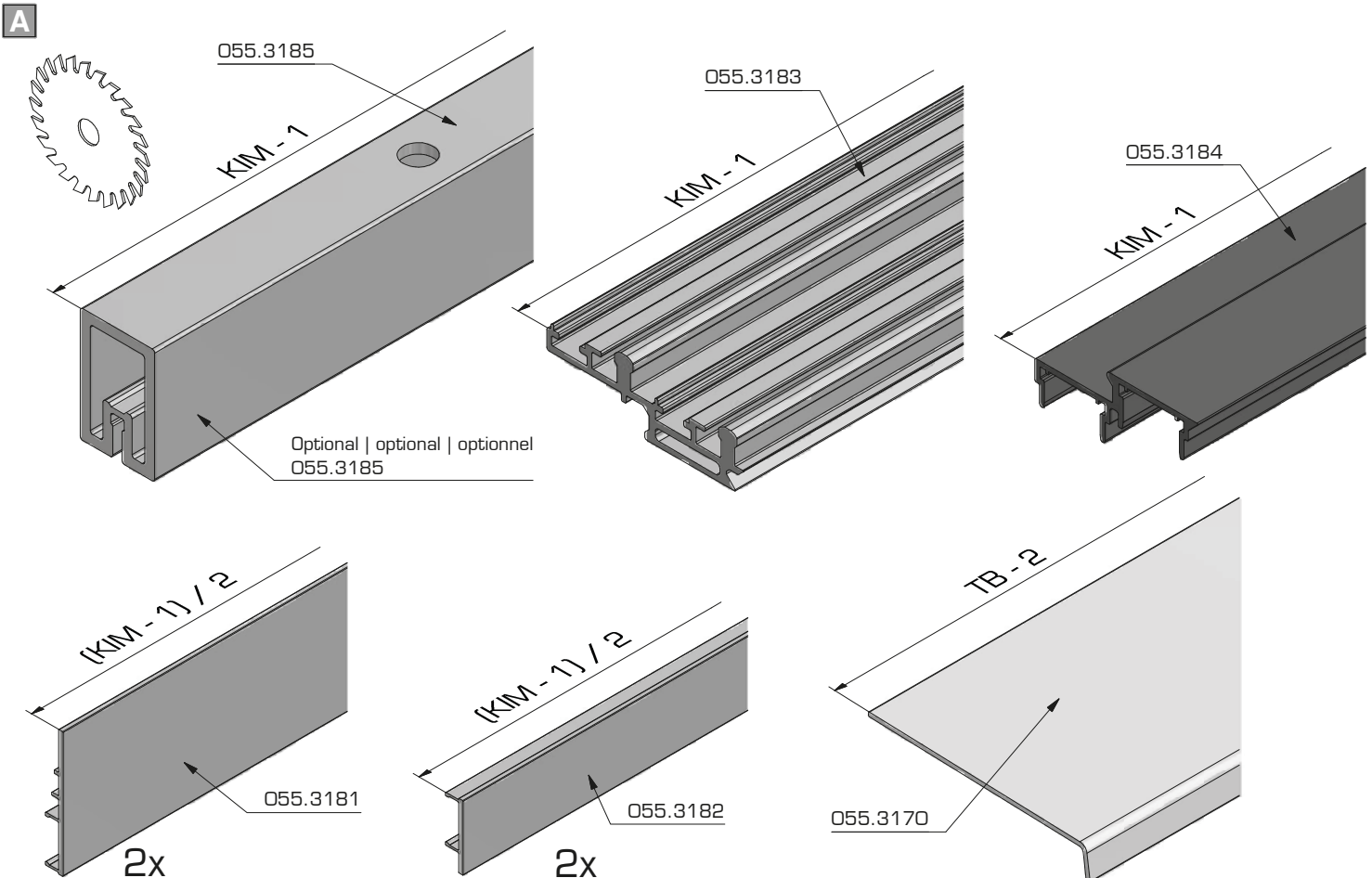
Accessoires

	Nr.
 Amortisseur de guidage (recommandé si le rapport de porte est supérieur à 1:3. Peut être utilisé seulement avec amortissement.)	055.3219.051






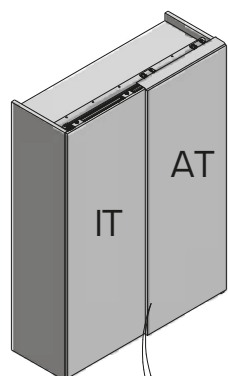
Diese Anleitung zeigt die Aussentüre (AT) nach links öffnend
 This manual shows the outside door (AT) opening to the left
 Ce manuel montre la porte extérieure (AT) s'ouvrant à gauche

Werkzeug Tool Outil		
⊕ PZ:	2	
⊙ SW:	3 ; 4	
☆ TX:	10; 20; 25	
⊖ No.:	-	
⊙ SW:	-	

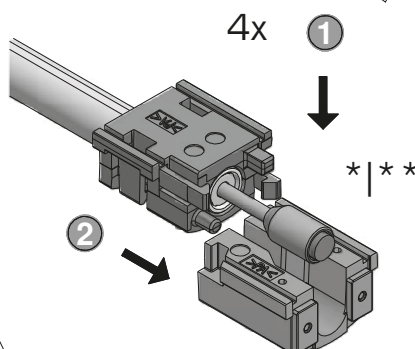
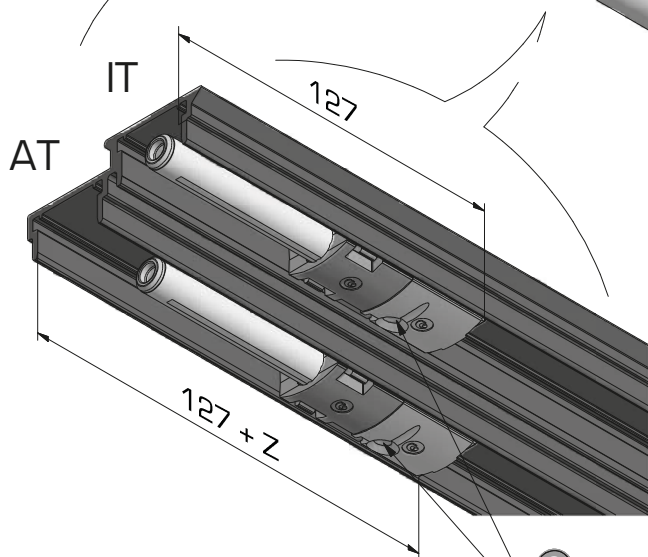


B

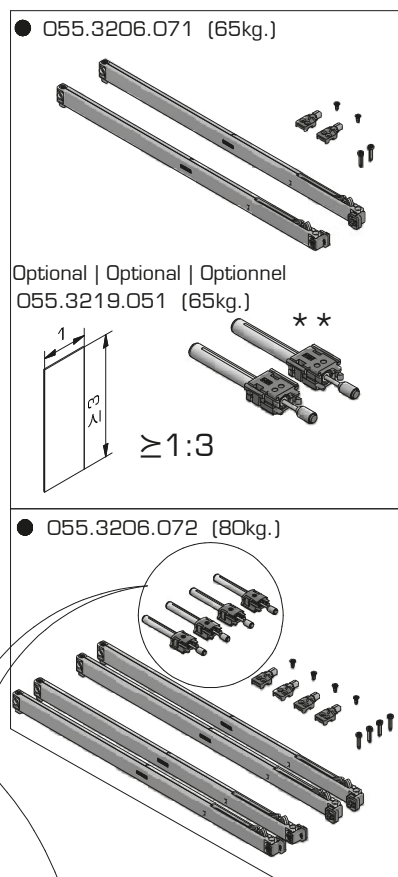
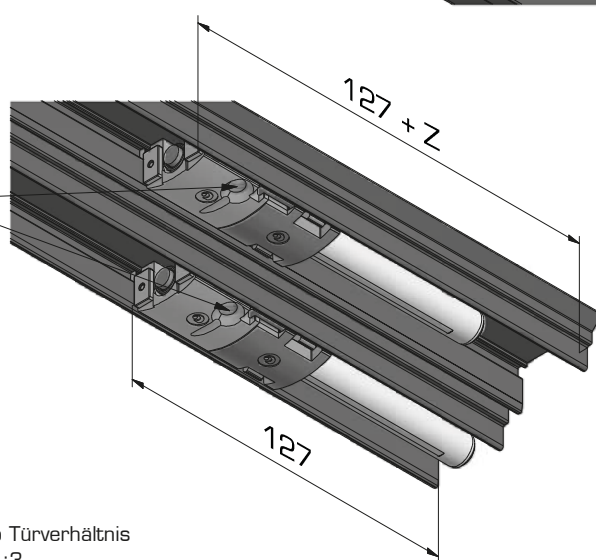
		Schliessrichtung closing direction sens de fermeture	Schliess- und Öffnungsrichtung opening and closing direction sens de fermeture et d'ouverture
			
65kg.		1x 055.3206.071 (1x 055.3219.051)	2x 055.3206.071 (2x 055.3219.051)
80kg.		-	1x 055.3206.072



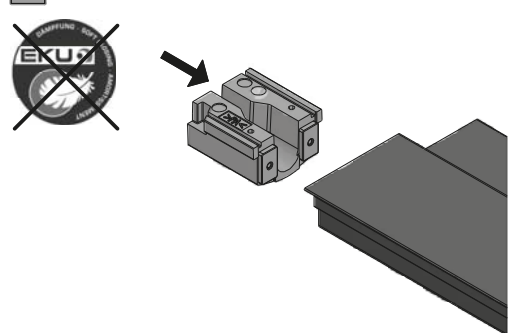
Z = 25 - 60mm



! CLICK !



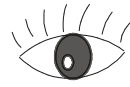
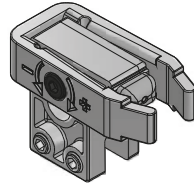
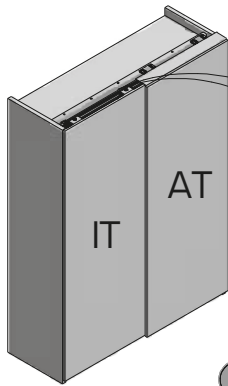
C



* Empfohlen ab Türverhältnis grösser als 1:3
Recommended from a door ratio bigger than 1:3
Recommandé si le rapport de porte est supérieur à 1:3

* * Kann nur mit einem Dämpfeinzug eingesetzt werden!
Can only be used with a soft close!
Peut être utilisé seulement avec amortissement!

D



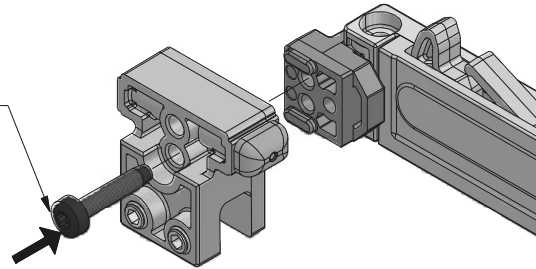
SW 3

2

1

3

TX 20
M4x20



*

(1x 055.3206.071)

Schliessrichtung | closing direction
sens de fermeture

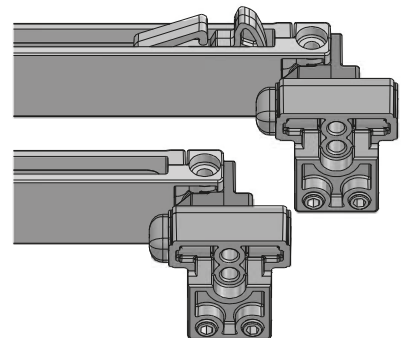
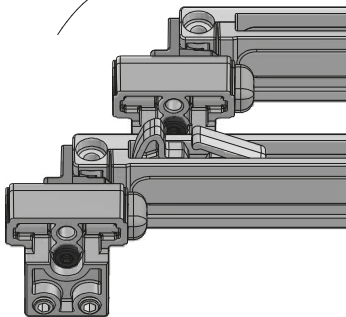


← AT

← IT *

* AT →

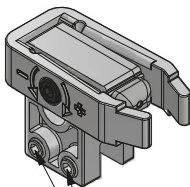
IT →



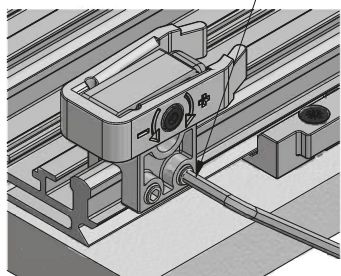
E



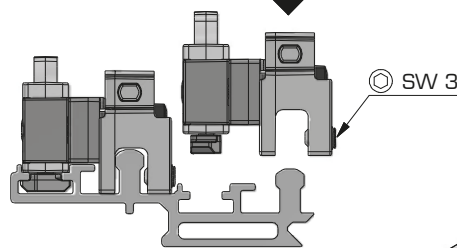
2x li
2x re



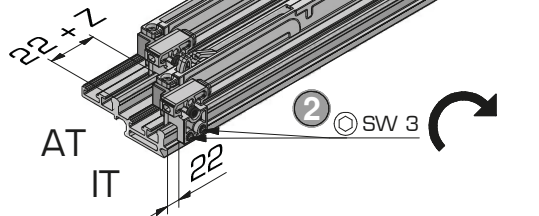
SW 3



1



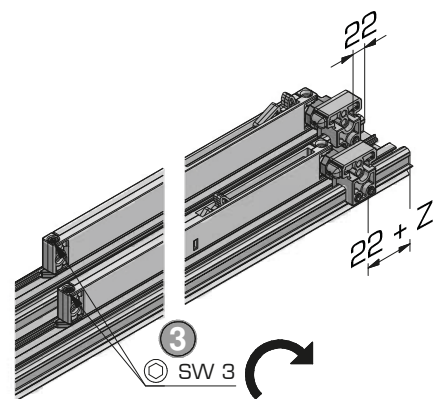
SW 3



AT
IT

2

SW 3



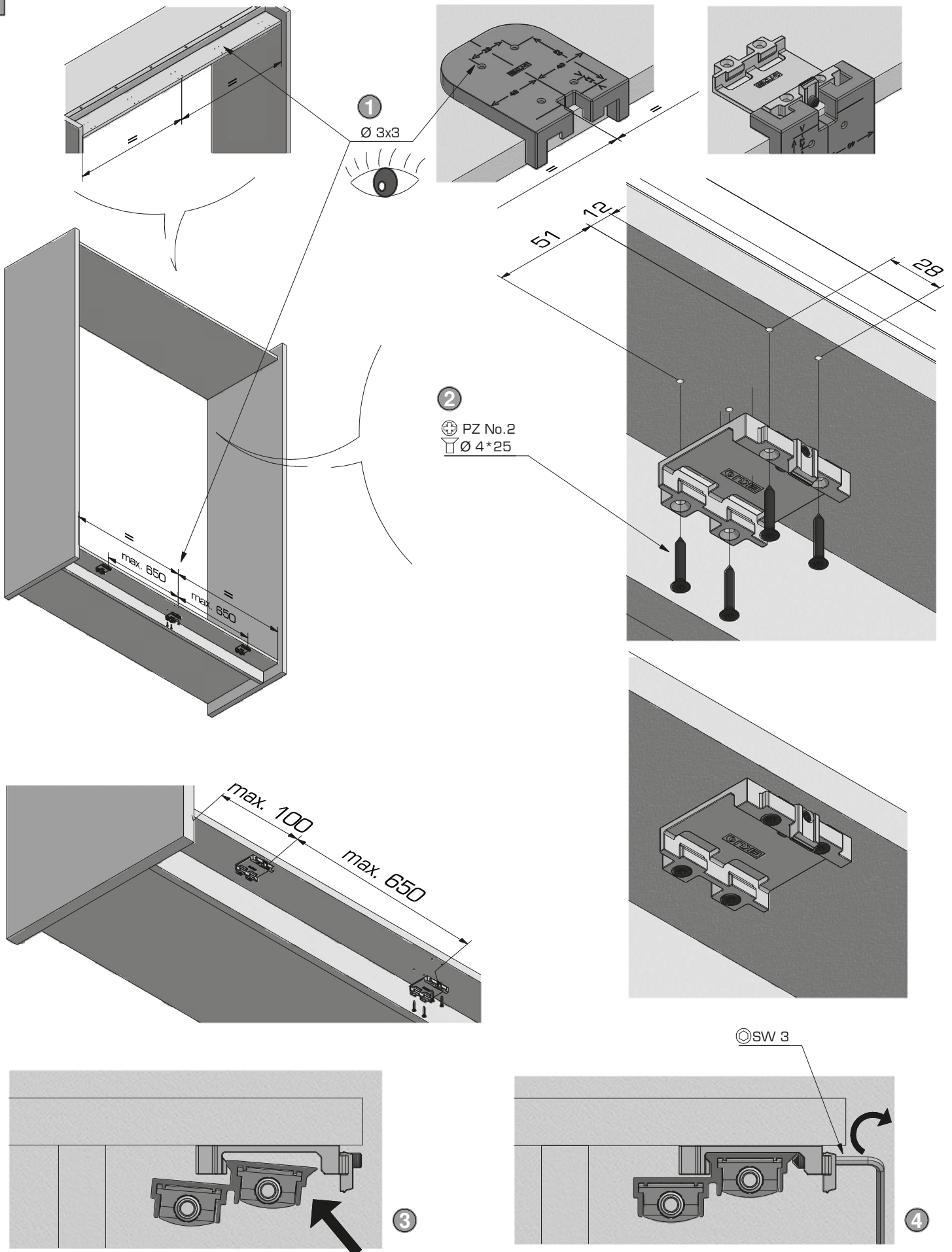
3

SW 3



Z = 25 - 60mm

F



G

Optional | Optional | Optionnel

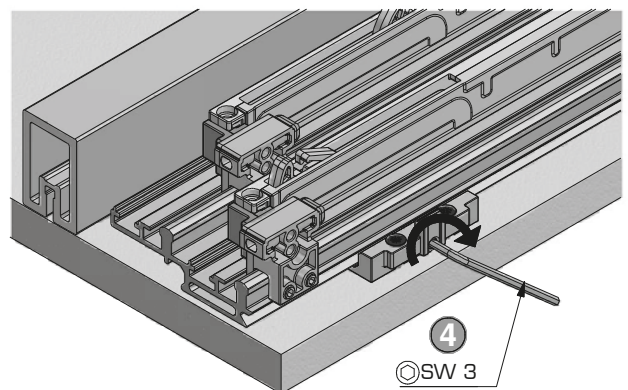
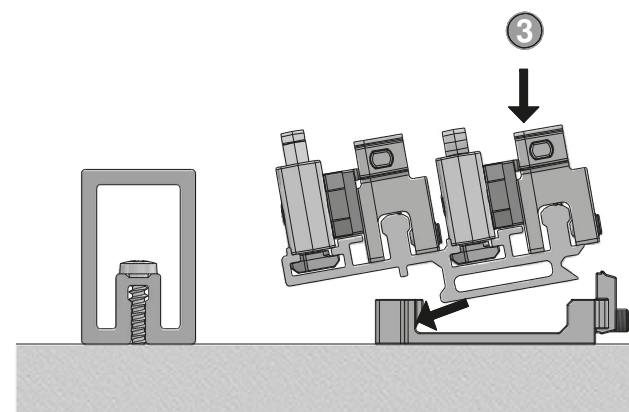
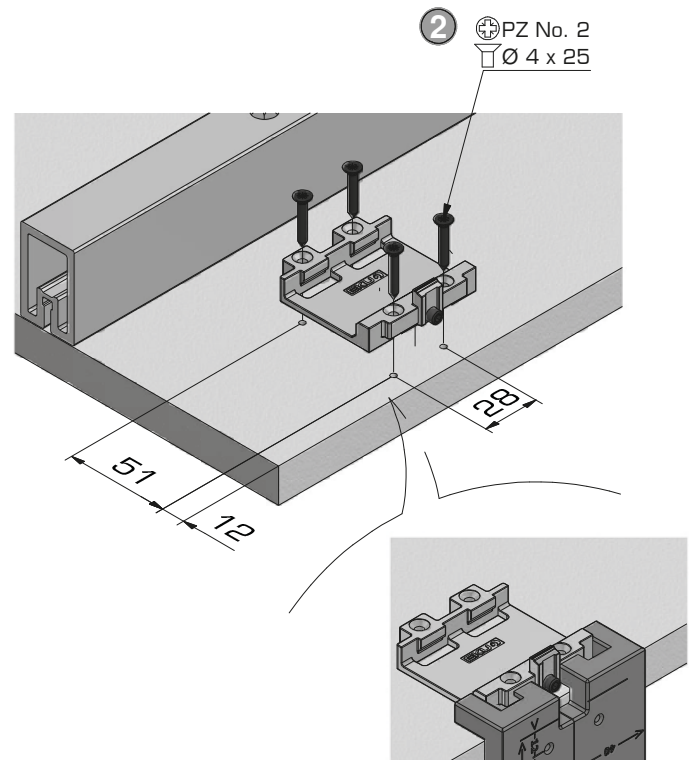
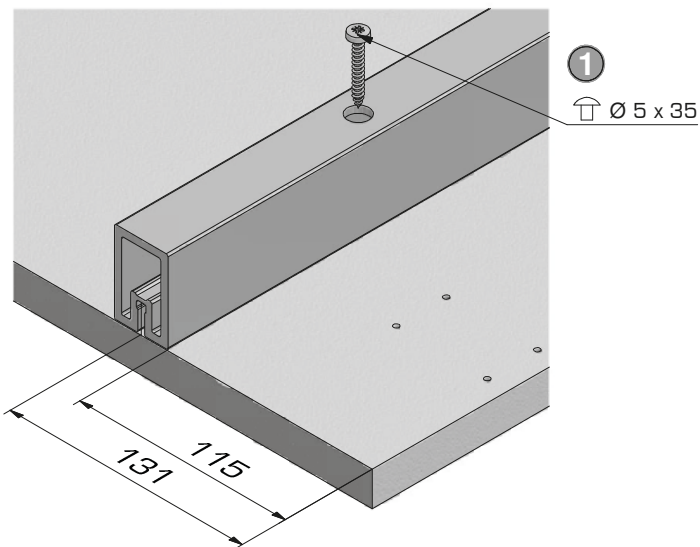
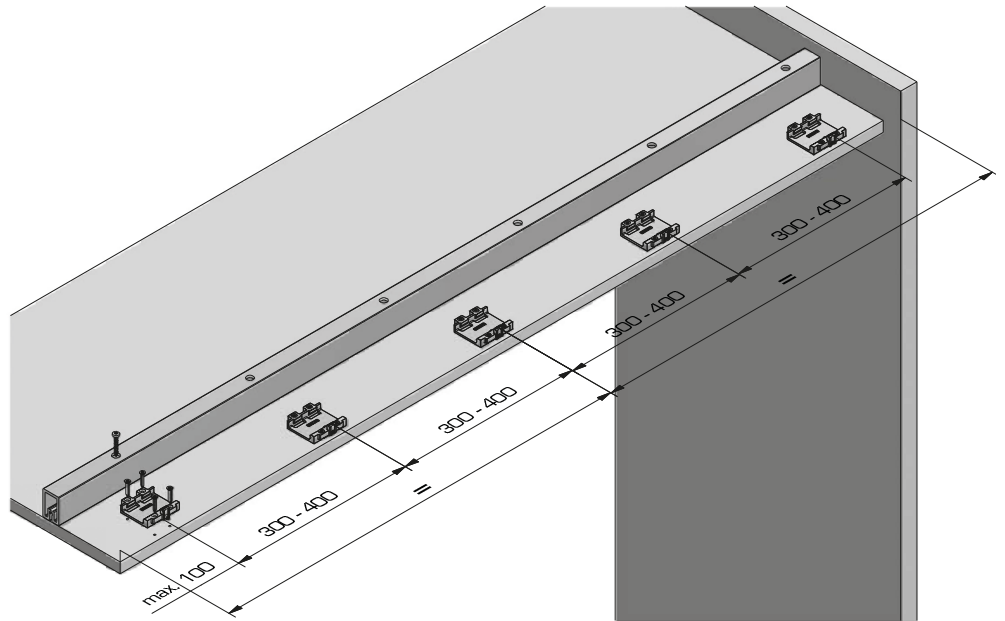
055.3185



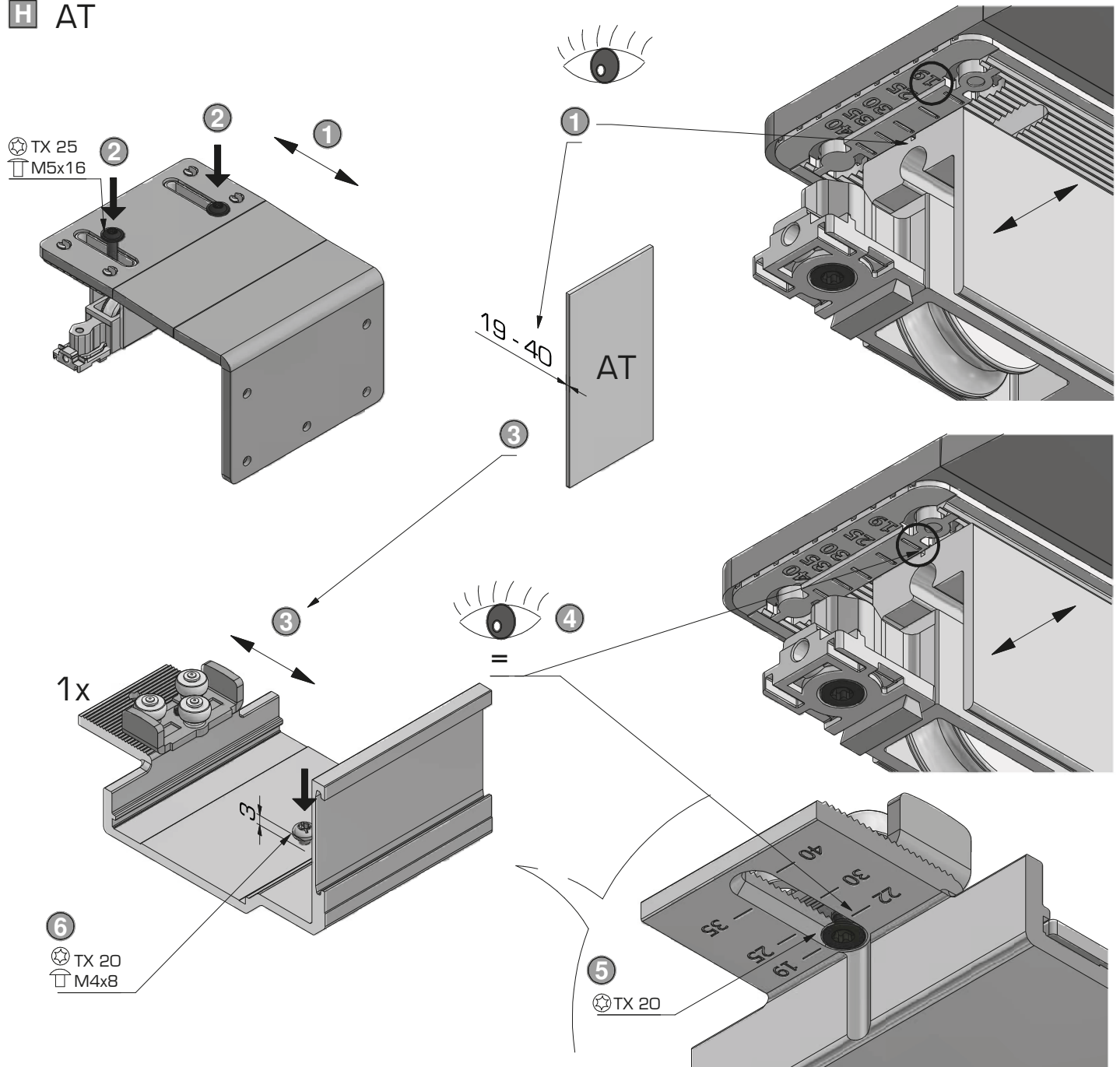
X

SE

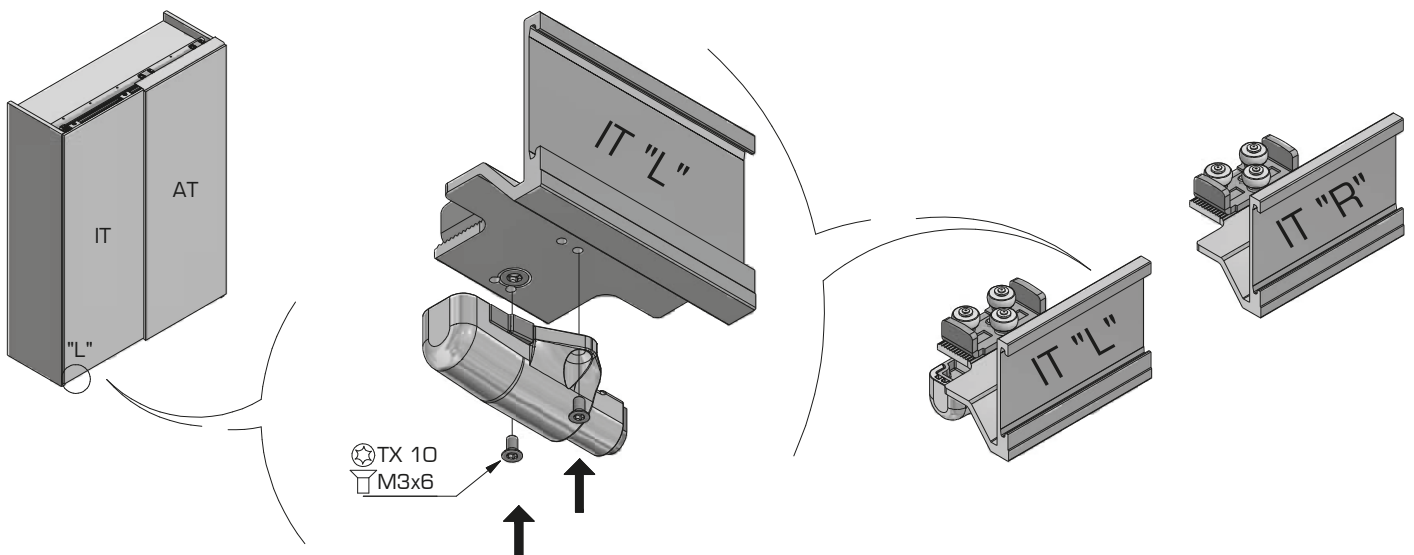
X	SE
19 mm	5 x 35
25 mm	5 x 40



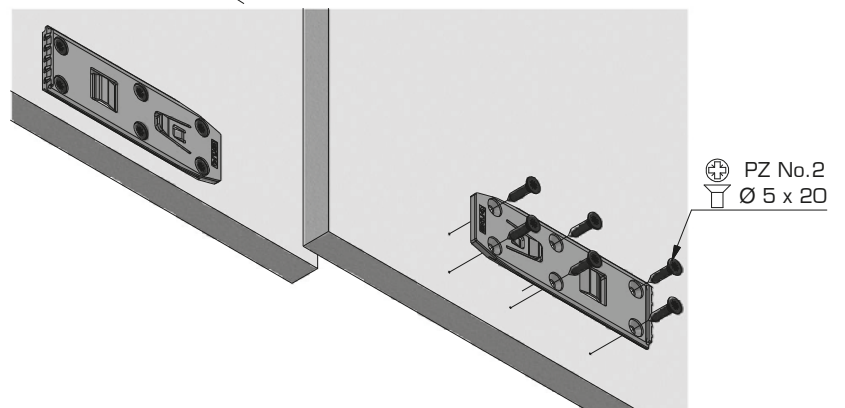
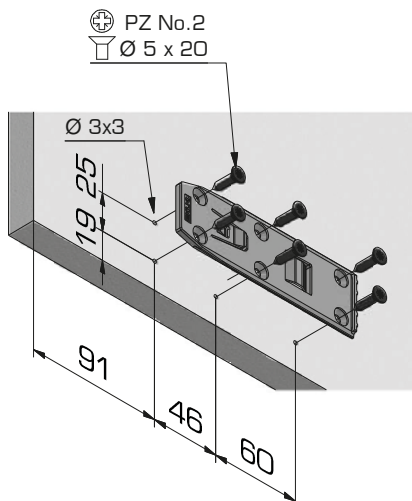
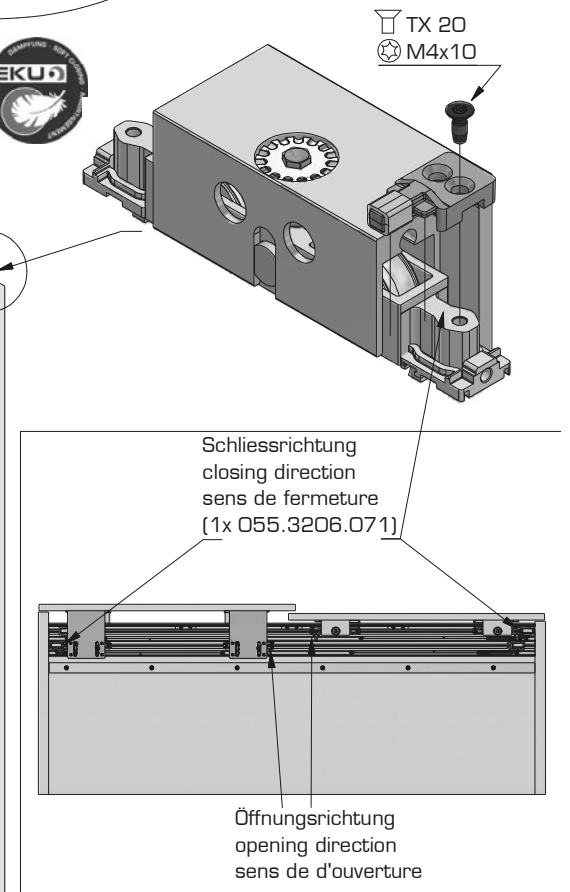
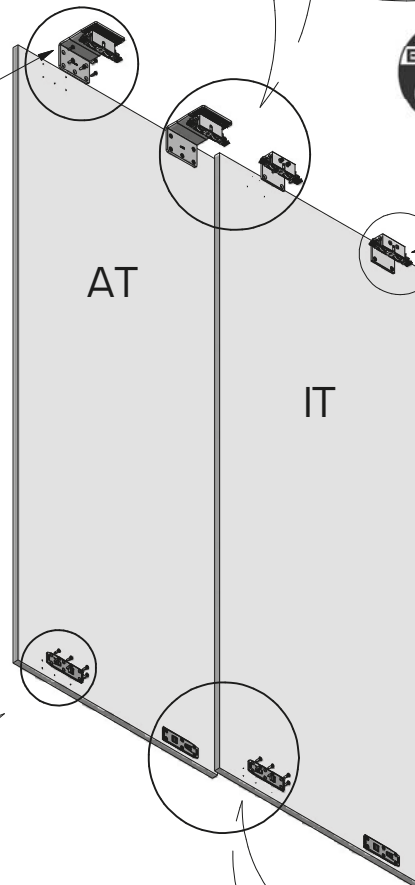
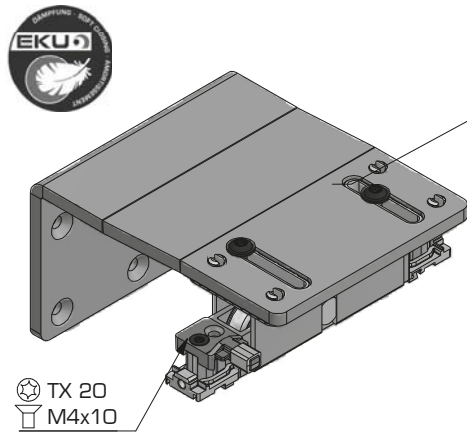
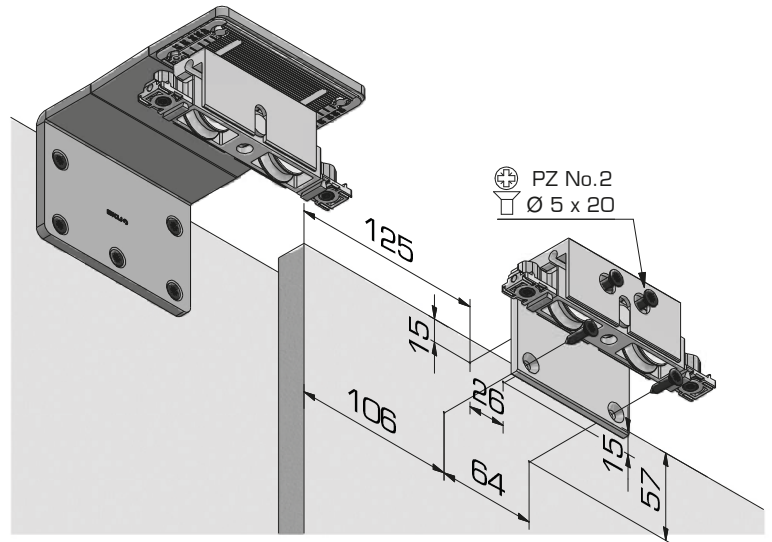
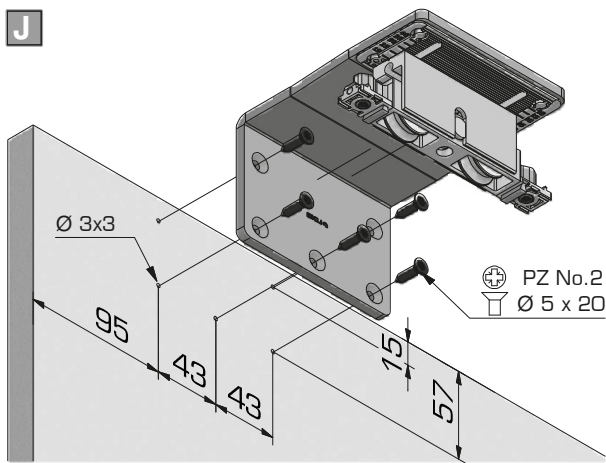
H AT



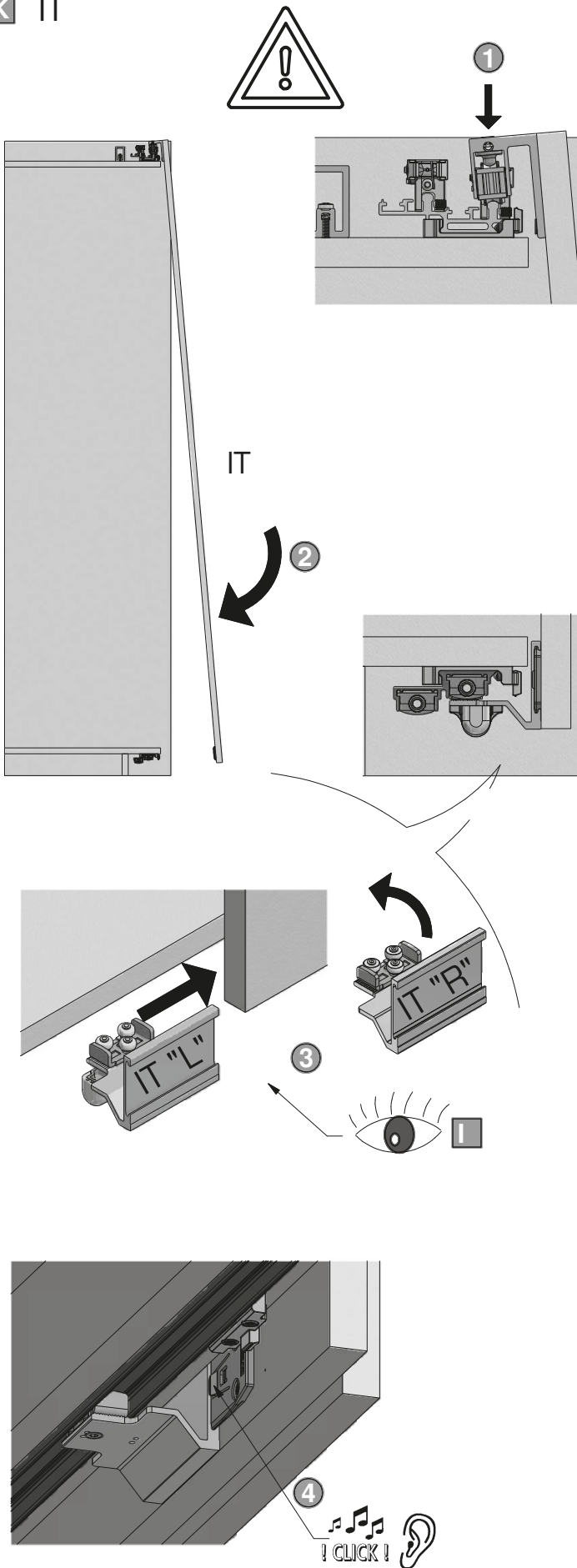
I IT



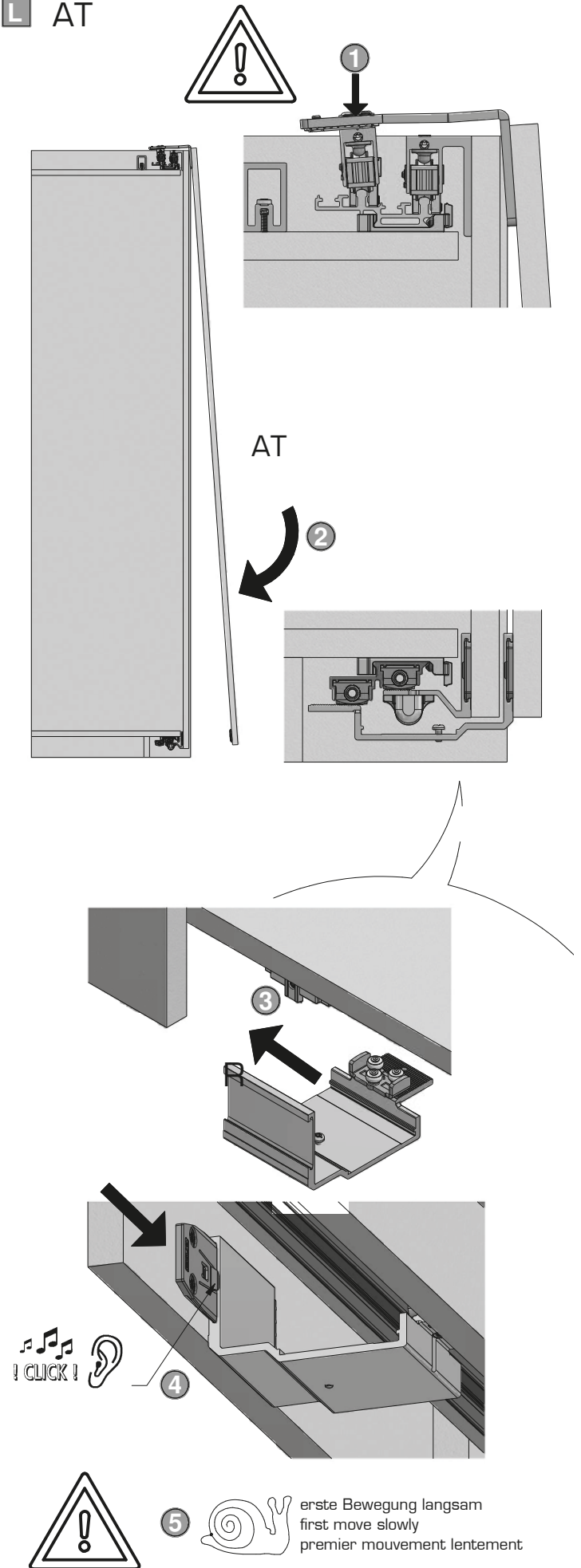
J



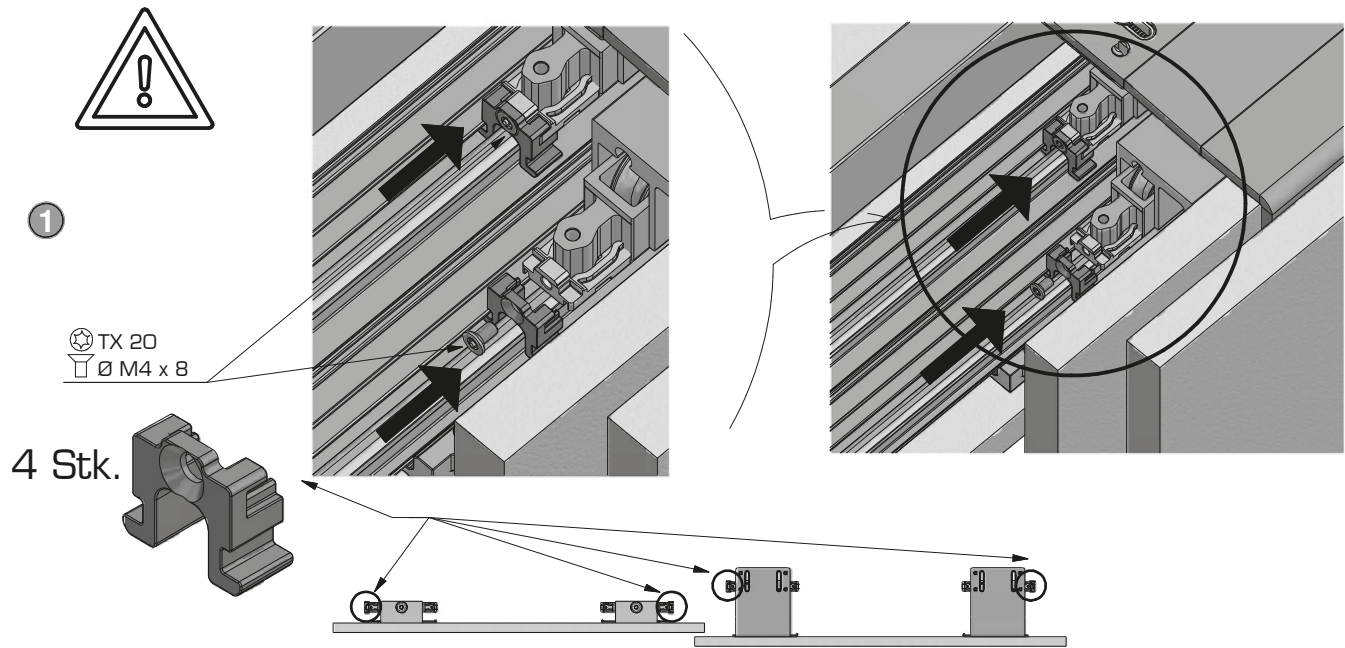
K IT



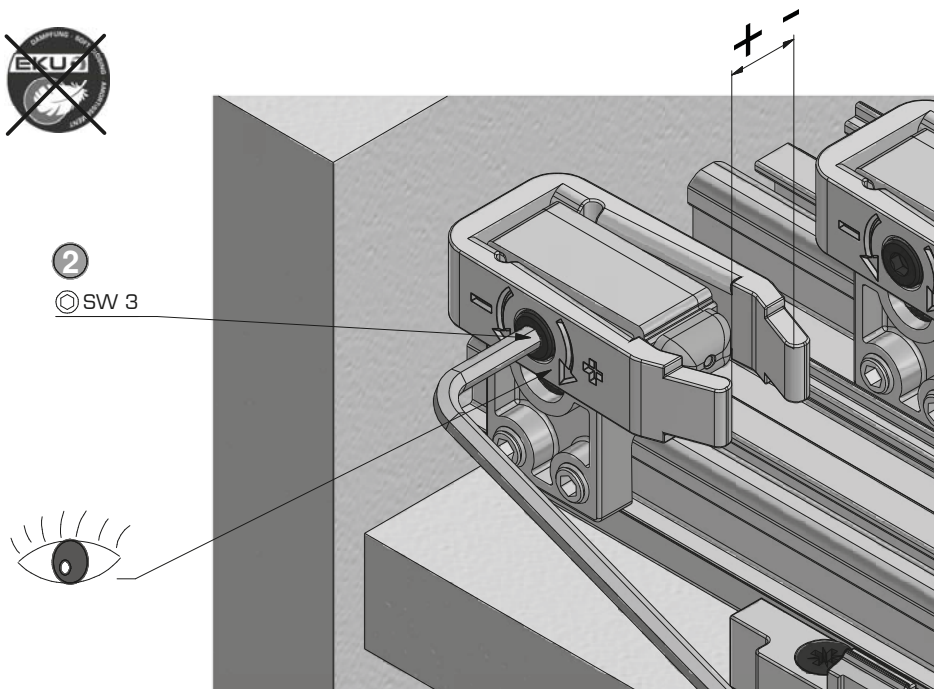
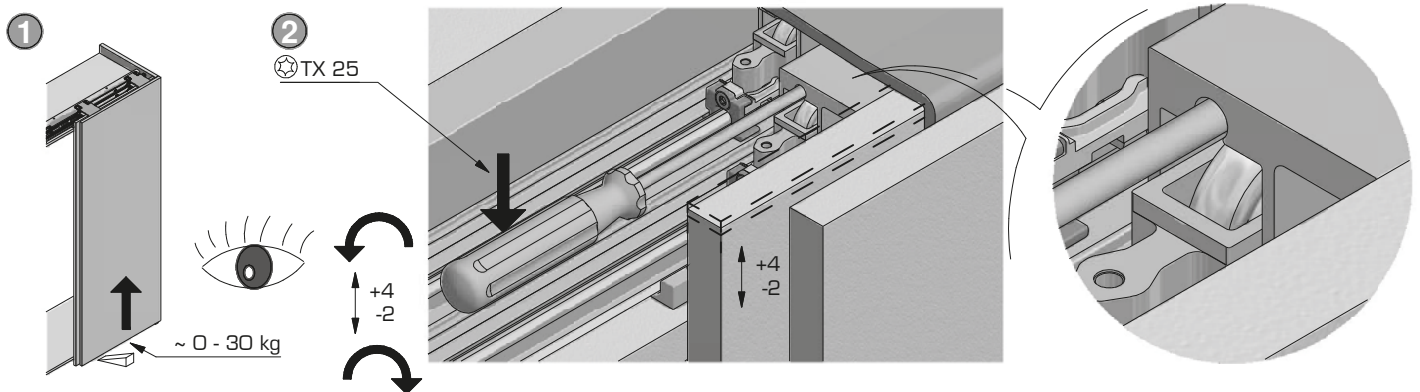
L AT



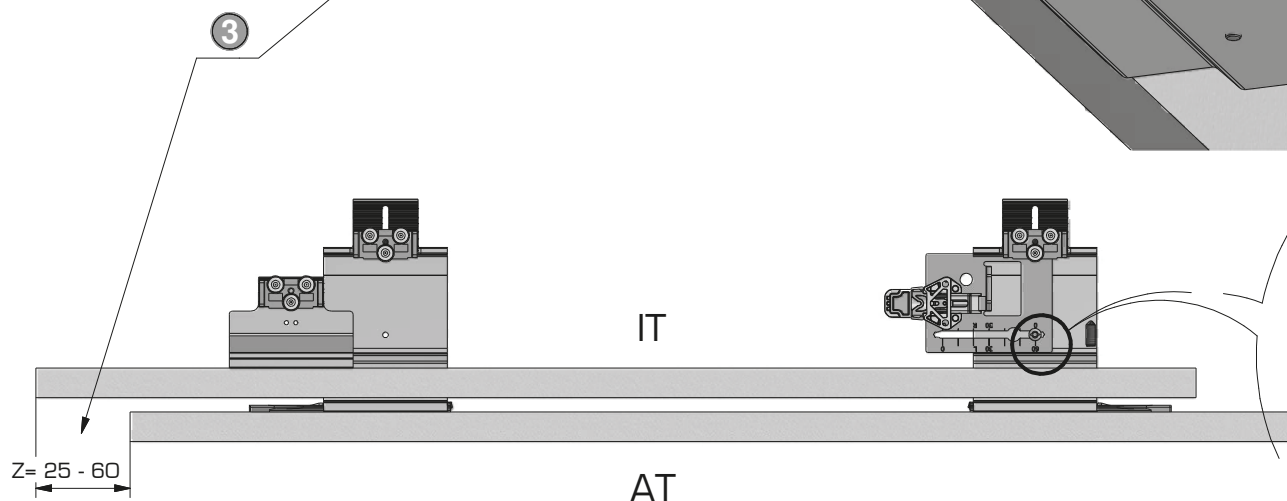
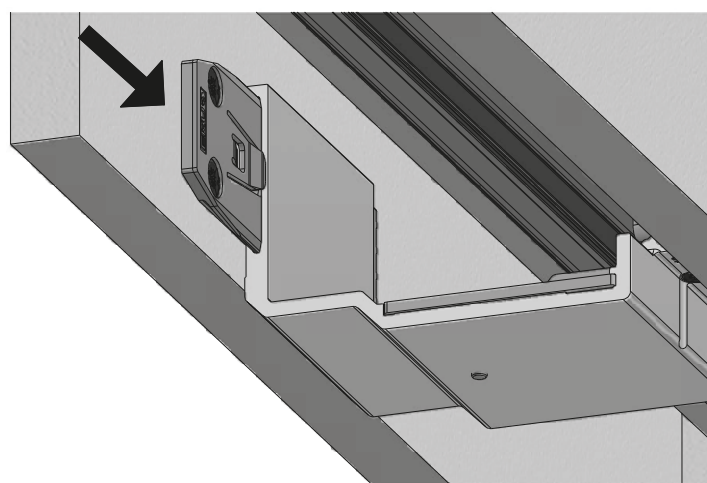
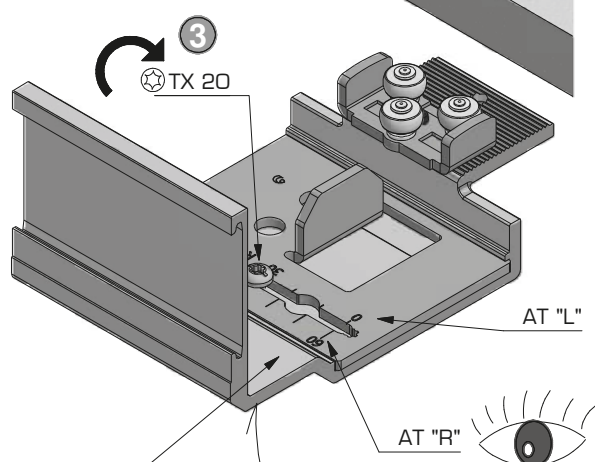
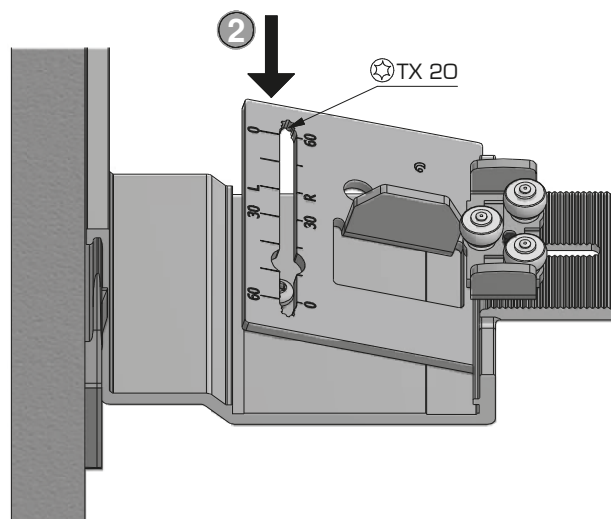
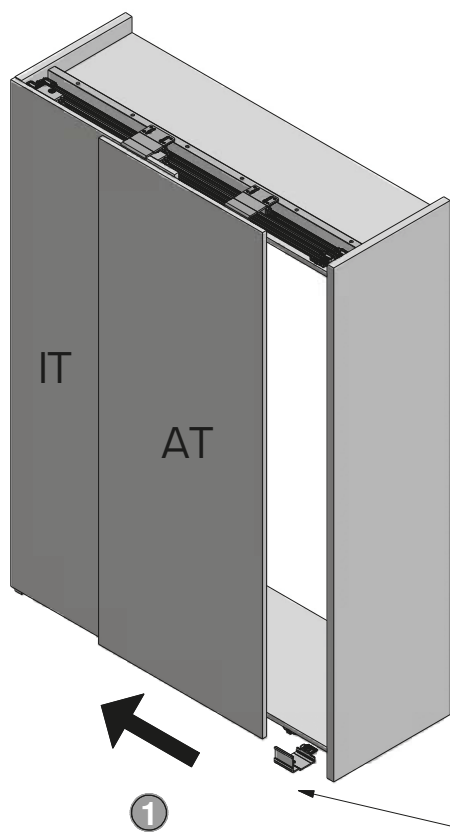
M Aushängesicherung | figurehead security | sécurité figure de proue



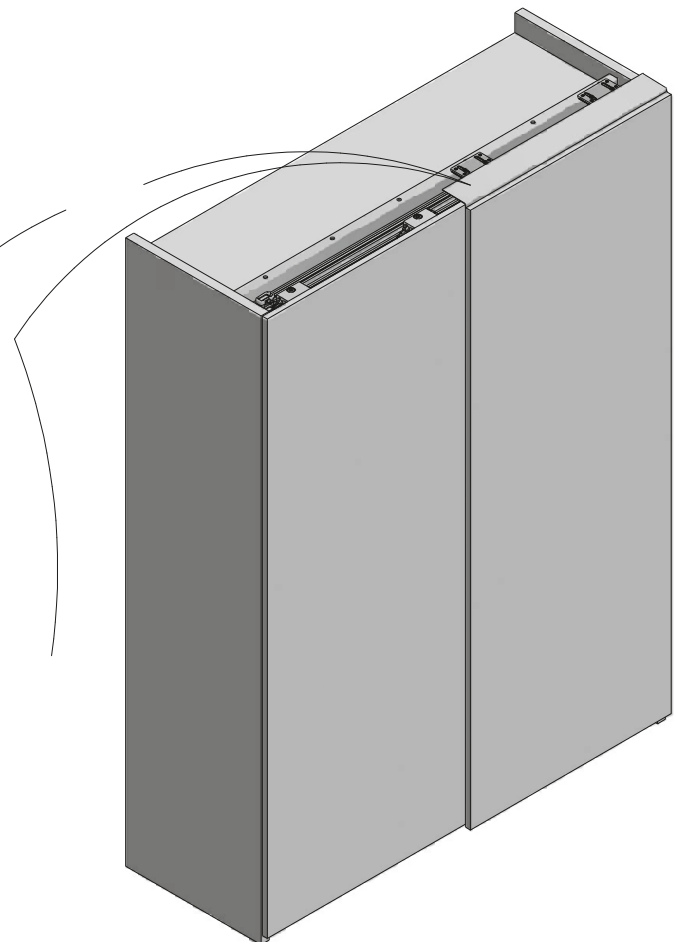
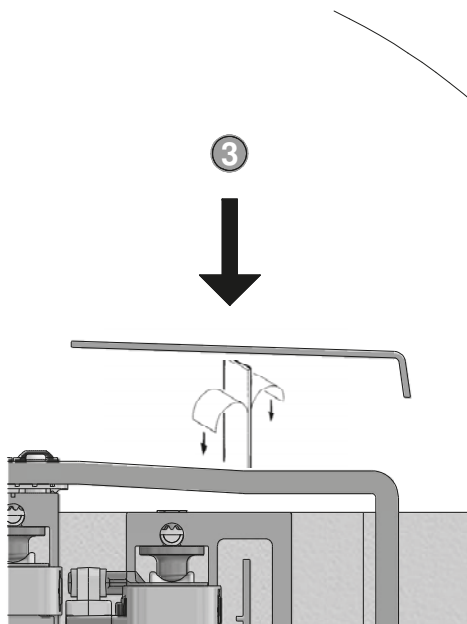
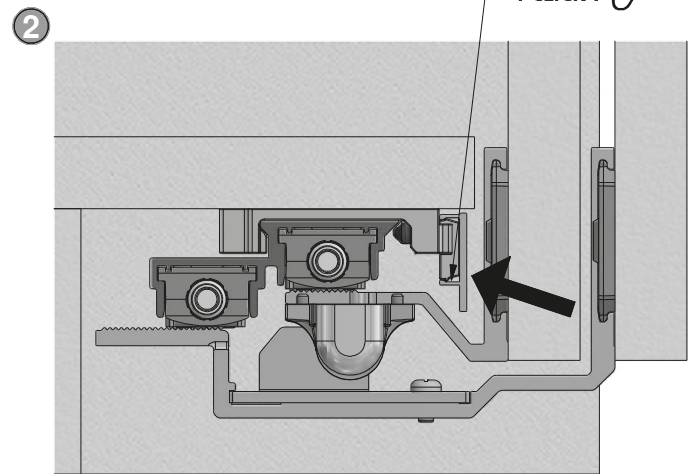
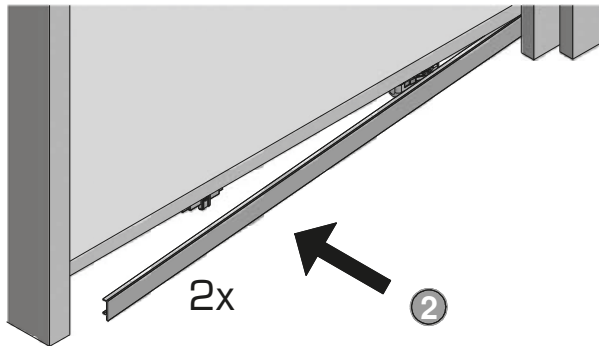
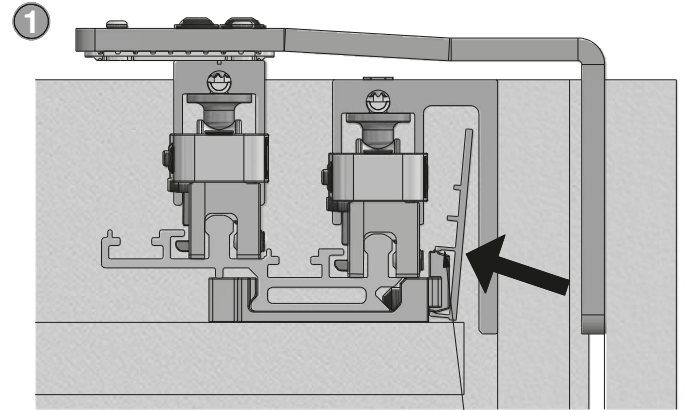
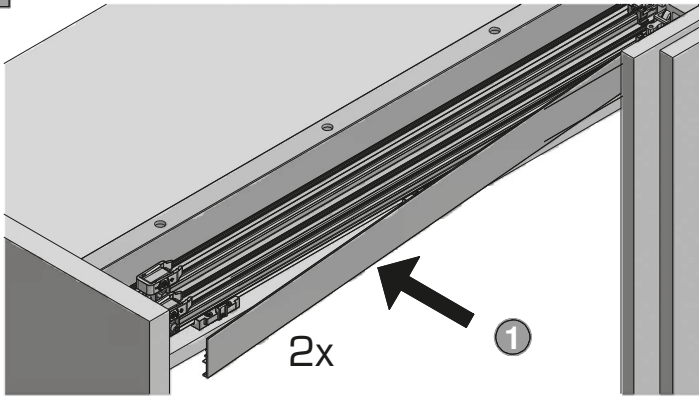
N Justieren | adjust | ajuster



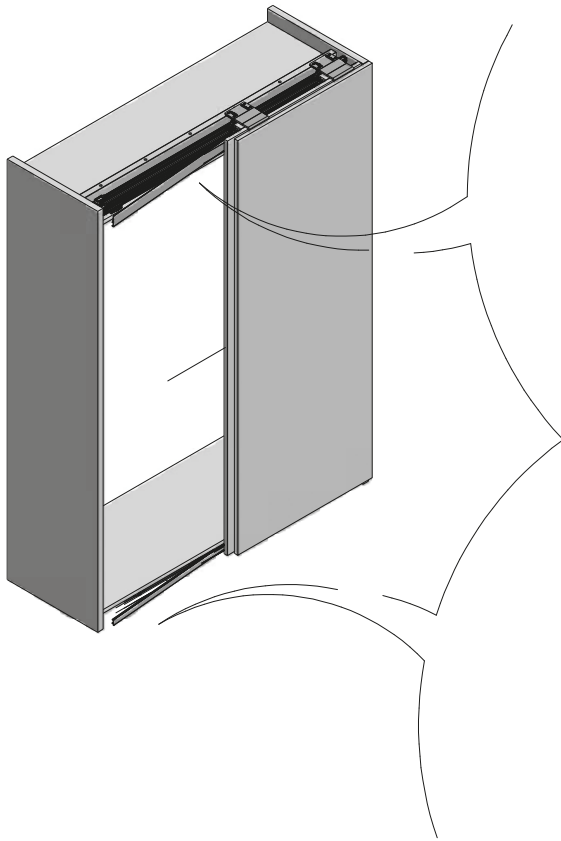
0



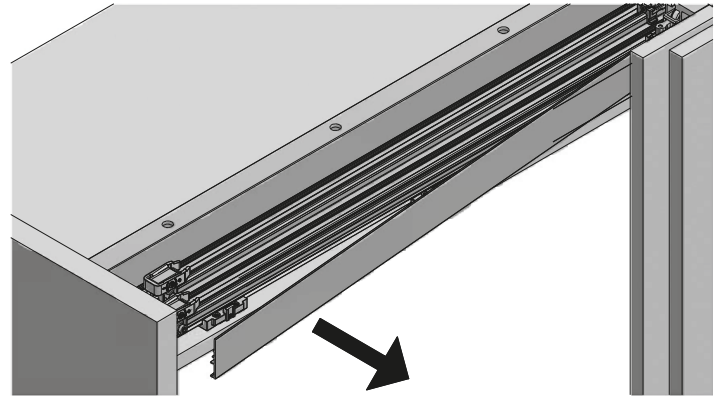
P



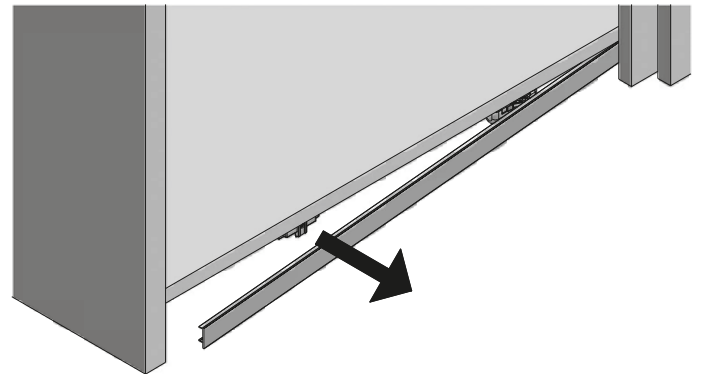
Q Türdemontage | door dismounting | demontage de la porte



1



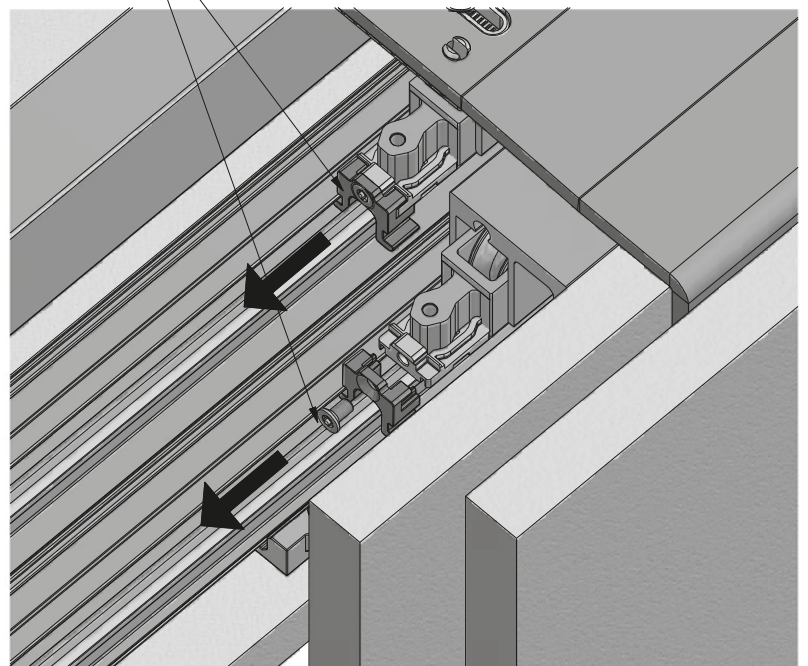
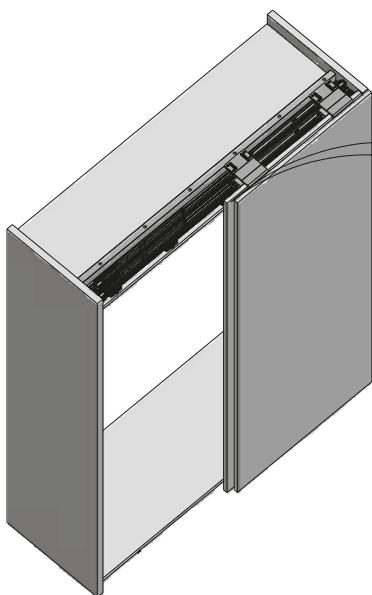
2

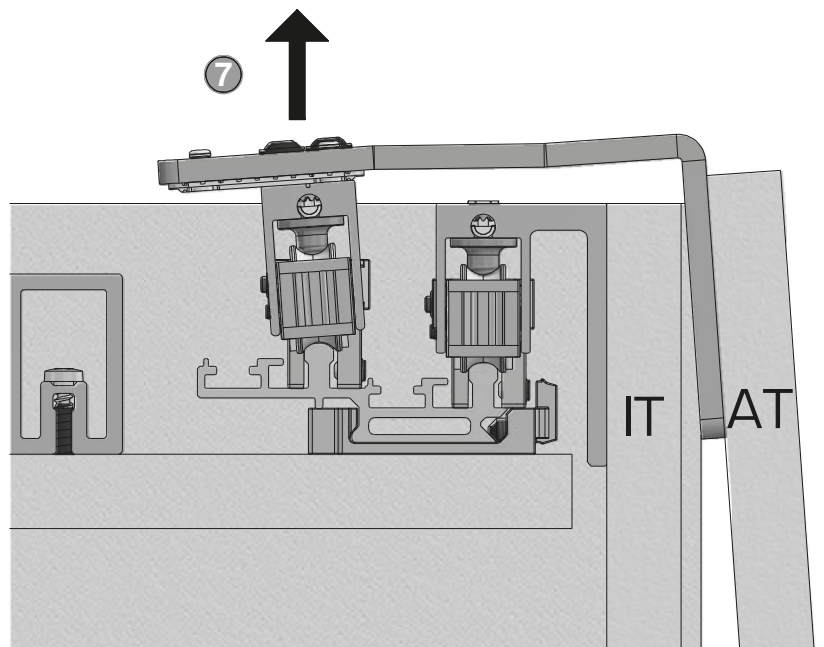
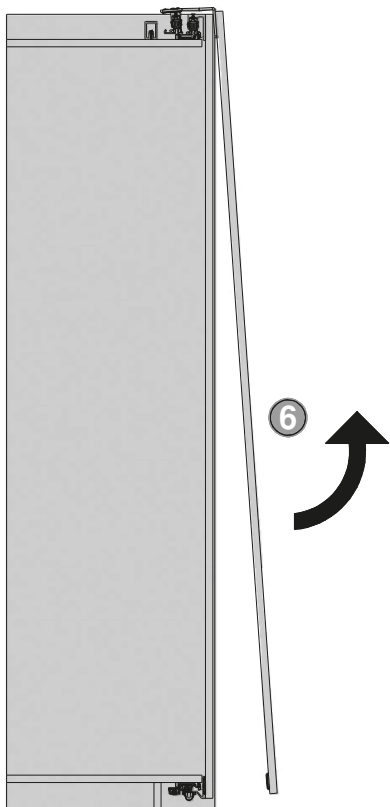
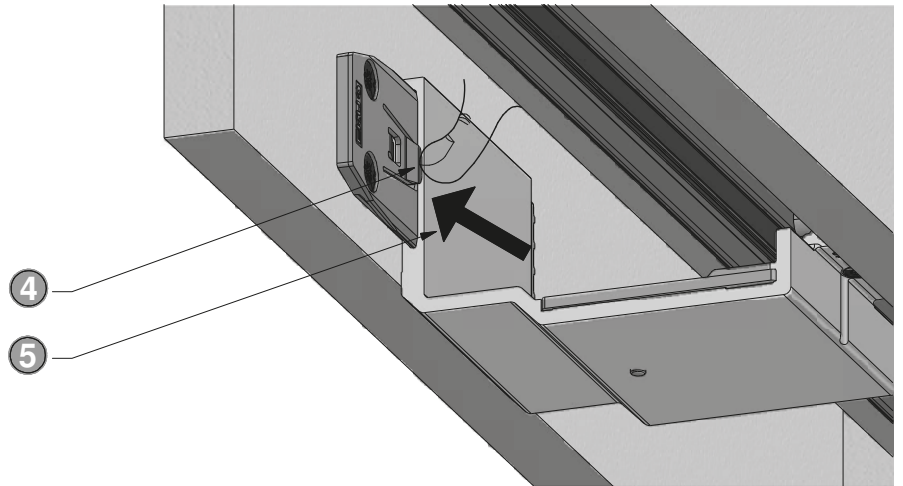
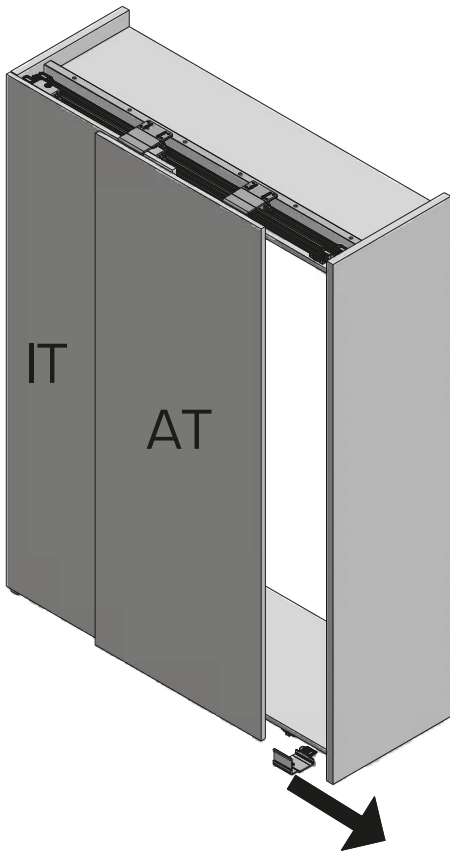


3 4x



TX 20





Montageanleitung Mounting instructions Instructions de montage

EKU COMBINO® 65|80 H FS OL 3T



Schweizer Qualität - getestet nach EN 15706
Swiss Quality - tested in accordance with EN 15706
Qualité suisse - testée selon EN 15706

Produkt-Highlights



Komfort

Leichter, flüsterleiser Lauf mit EKU Comfort Rolle und spielfreier Führung

Raffinierte Dämpfung auch für Mitteltüren sowie innovative Anordnung der Komponenten erlauben spielend leichte Bedienung

Technische Vorgaben



max. 80 kg



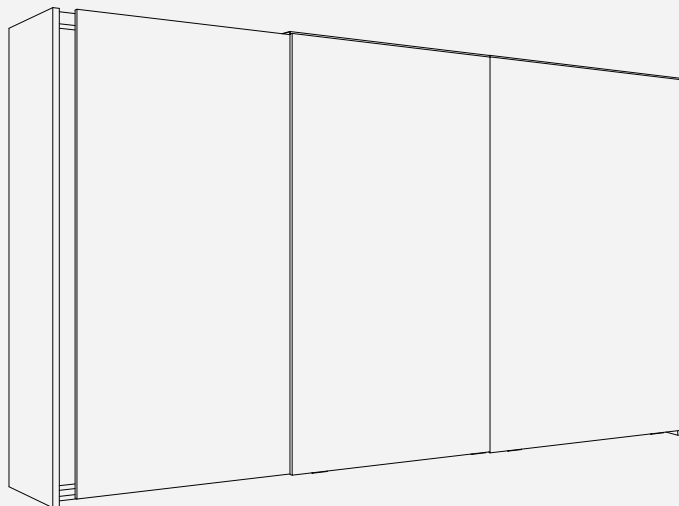
max. 2800 mm



max. 1600 mm



19 – 40 mm



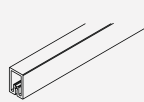
Garnitur für 3 Holztüren

	Nr.
EKU Combino 80 H FS ol, Türstärke 19-40 mm, für 3 Türen	055.3205.074
EKU Combino 65 H FS ol, Türdicke 19-40 mm, für 3 Türen	055.3205.072

Schienen-Sets

	Nr.
EKU Combino 65/80 H FS ol, 2500 mm	055.3211.071
EKU Combino 65/80 H FS ol, 4000 mm	055.3211.072

Verstärkungsprofil

	mm	Nr.
	2500	055.3185.250
	4000	055.3185.400

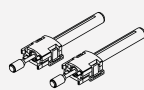
Dämpfeinzug

	Nr.
EKU Combino 80 H FS ol, bis 80 kg, 4 Stück	055.3206.072
EKU Combino 80 H FS ol, bis 80 kg, 6 Stück	055.3206.073
EKU Combino 65 H FS ol, bis 65 kg, 2 Stück	055.3206.071

Dämpfeinzug Mitteltür

	Nr.
EKU Combino 65/80 H FS ol, Mitteltür	055.3207.071

Zubehör

	Nr.
 Dämpfung Führung (Empfohlen ab Türverhältnis grösser als 1:3. Kann nur mit einem Dämpfeinzug eingesetzt werden.)	055.3219.051

Product highlights



Comfort

Smooth, silent running with EKU Comfort roller and guide with zero clearance

Sophisticated soft close also for center doors and an innovative arrangement of the components make for very easy operation

Technical specifications



Max. 80 kg (176 lbs.)



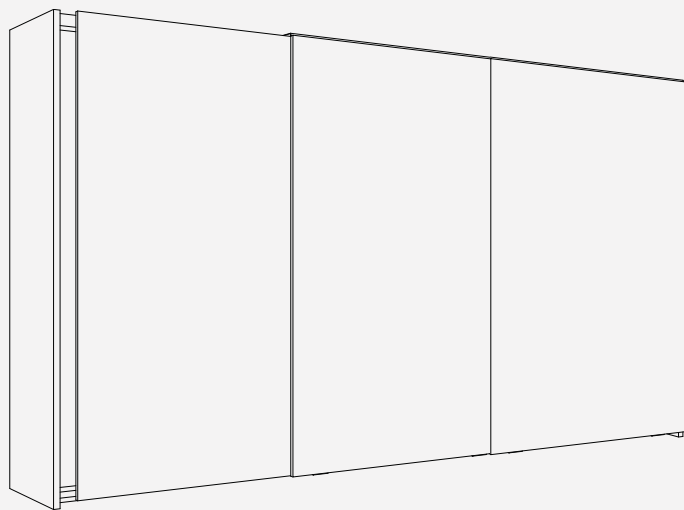
Max. 2800 mm (9'2 1/4")



Max. 1600 mm (5'3")



19 – 40 mm (3/4" to 1 9/16")



Set for 3 wooden doors

	Nr.
EKU Combino 80 H FS ol, door thickness 19-40 mm (3/4"-1 9/16"), for 3 doors	055.3205.074
EKU Combino 65 H FS ol, door thickness 19-40 mm (3/4"-1 9/16"), for 3 doors	055.3205.072

Track sets

	Nr.
EKU Combino 65/80 H FS ol, 2500 mm (8'2 7/16")	055.3211.071
EKU Combino 65/80 H FS ol, 4000 mm (13'1 15/32")	055.3211.072

Reinforcement profile

		mm (inch)	Nr.
	Reinforcement profile, aluminum, anodized, pre-drilled, recommended from a span width of 800 mm (2'7 1/2")	2500 (8'2 7/16")	055.3185.250
		4000 (13'1 15/32")	055.3185.400

Soft close

	Nr.
EKU Combino 80 H FS ol, up to 80 kg (176 lbs.), 4 pieces	055.3206.072
EKU Combino 80 H FS ol, up to 80 kg (110-176 lbs.), 6 pieces	055.3206.073
EKU Combino 65 H FS ol, up to 65 kg (143 lbs.), 2 pieces	055.3206.071

Soft close center door

	Nr.
EKU Combino 65/80 H FS ol, center door	055.3207.071

Accessories

	Nr.
	Soft close for guide (recommended from a door ratio bigger than 1:3. Can only be used with a soft close.)
	055.3219.051

Produits phares



Confort

Coulissement léger et silencieux avec ECU Galet de Confort et un guidage sans jeu

Amortissement raffiné aussi pour les portes centrales ainsi qu'un ordre innovant des composants permettent une manipulation aisée

Spécifications techniques



Max. 80 kg



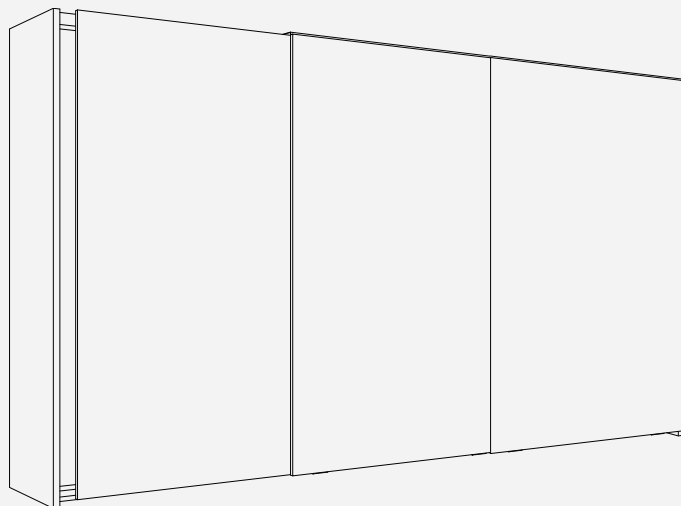
Max. 2800 mm



Max. 1600 mm



19 – 40 mm



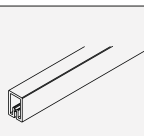
Garniture pour 3 portes en bois

	Nr.
EKU Combino 80 H FS ol, épaisseur de porte 19-40 mm, pour 3 portes	055.3205.074
EKU Combino 65 H FS ol, épaisseur de porte 19-40 mm, pour 3 portes	055.3205.072

Kits de rails

	Nr.
EKU Combino 65/80 H FS ol, 2500 mm	055.3211.071
EKU Combino 65/80 H FS ol, 4000 mm	055.3211.072

Profil de renforcement

	mm	Nr.
	2500	055.3185.250
	4000	055.3185.400

Profil de renforcement, aluminium, anodisé, percé (recommandé à partir d'une ouverture de 800 mm)

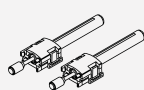
Amortissement

	Nr.
EKU Combino 80 H FS ol, jusqu'à 80 kg, 4 pièces	055.3206.072
EKU Combino 80 H FS ol, jusqu'à 80 kg, 6 pièces	055.3206.073
EKU Combino 65 H FS ol, jusqu'à 65 kg, 2 pièces	055.3206.071

Amortissement, porte centrale

	Nr.
EKU Combino 65/80 H FS ol, porte centrale	055.3207.071

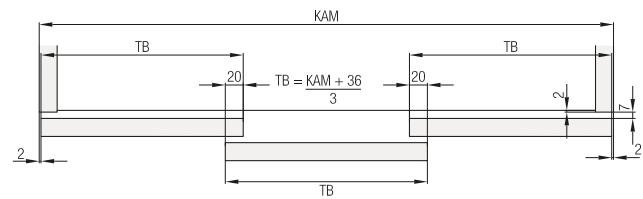
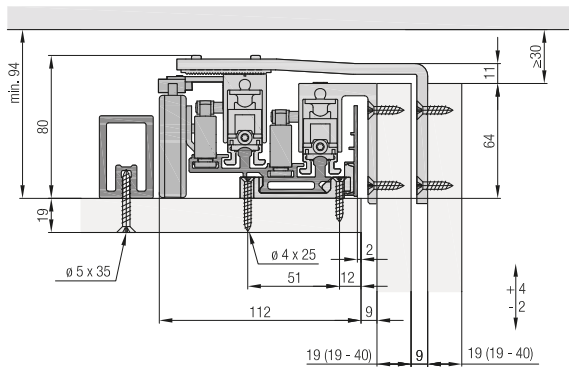
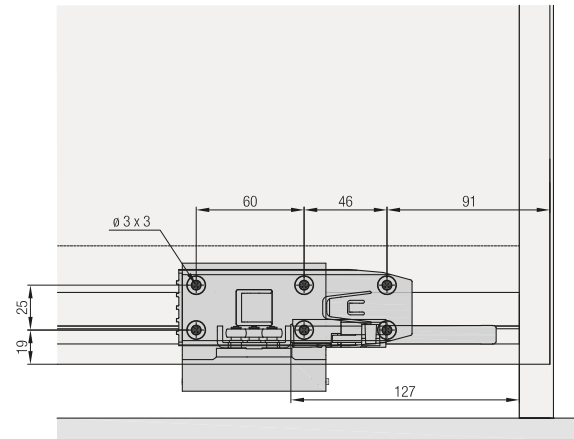
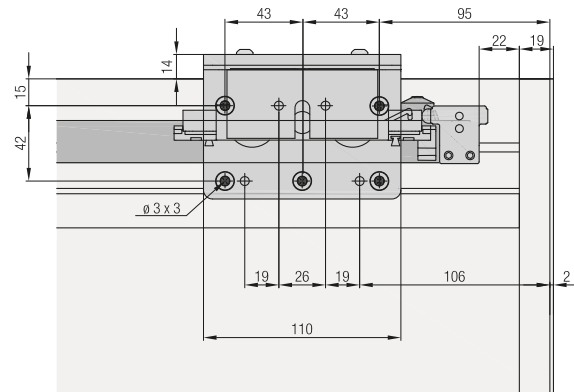
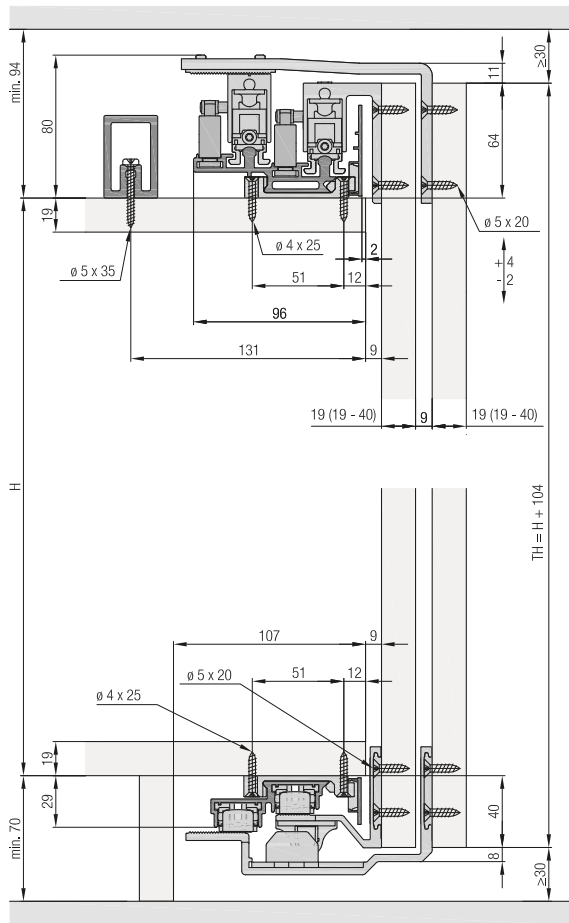
Accessories

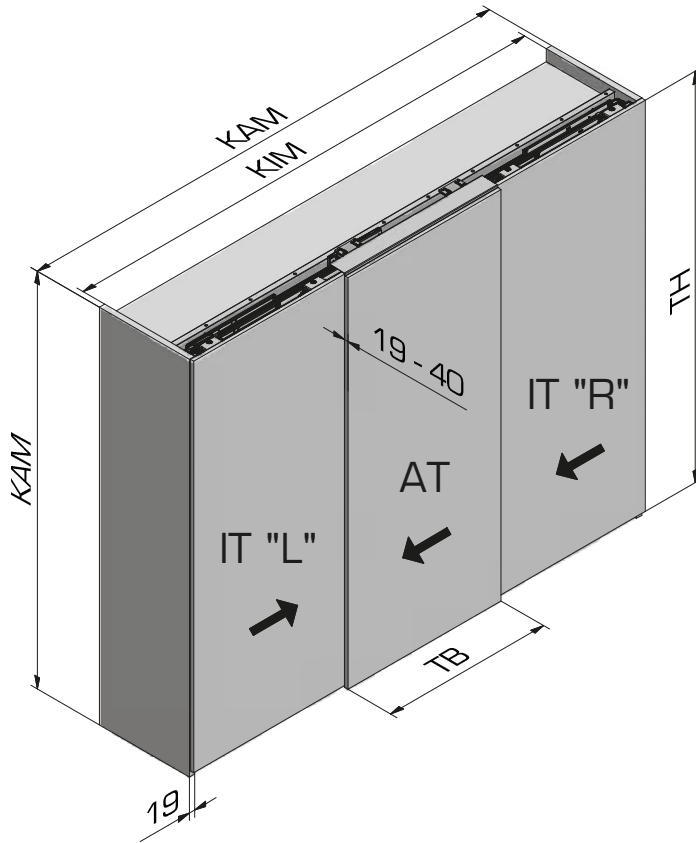
	Nr.
 Soft close for guide (recommended from a door ratio bigger than 1:3. Can only be used with a soft close.)	055.3219.051

Einbaubeispiele

Installation examples

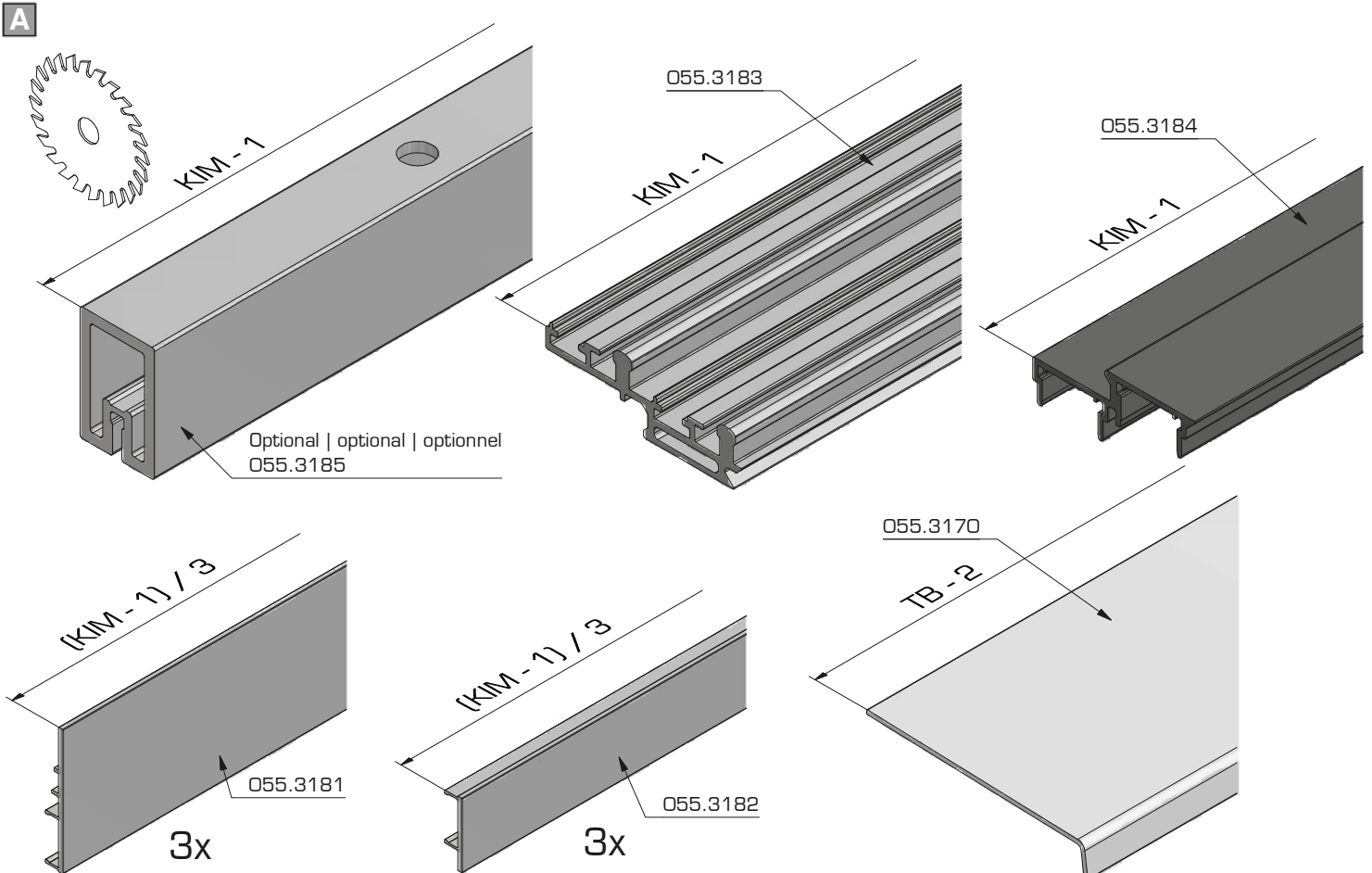
Exemples de montage





Diese Anleitung zeigt die Aussentüre (AT) nach links öffnend
 This manual shows the outside door (AT) opening to the left
 Ce manuel montre la porte extérieure (AT) s'ouvrant à gauche

Werkzeug Tool Outil		
⊕ PZ:	2	
⊙ SW:	3; 4	
⊗ TX:	10; 20; 25	
⊖ No.:	-	
⊕ SW:	-	

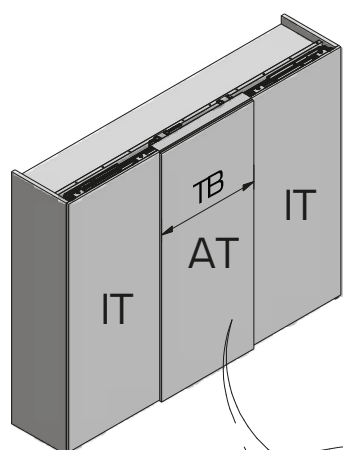


B

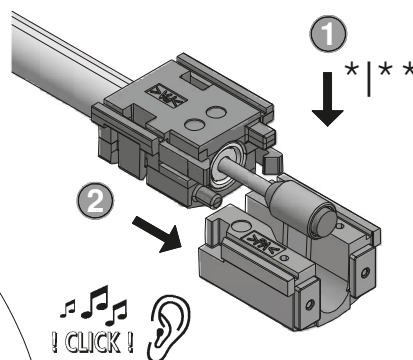
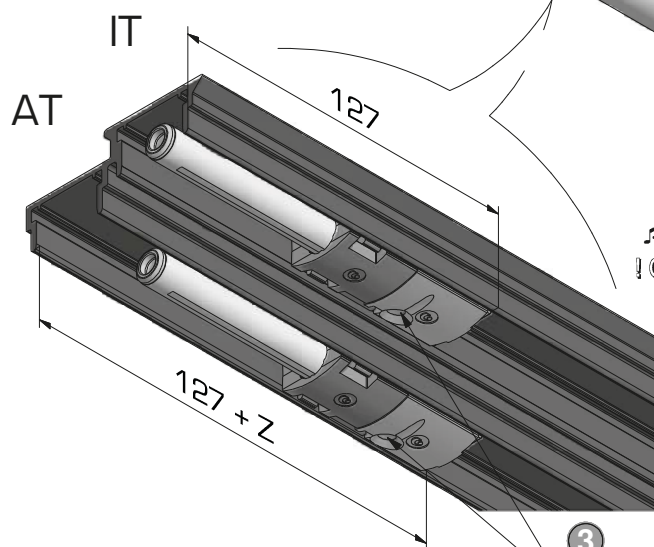
	Schliessrichtung closing direction sens de fermeture	Schliess- und Öffnungsrichtung opening and closing direction sens de fermeture et d'ouverture	Schliess- und Öffnungsrichtung opening and closing direction sens de fermeture et d'ouverture
65kg.	2x 055.3206.071 (2x 055.3219.051)	2x 055.3206.071 (2x 055.3219.051) 1x 055.3207.071	-
80kg.	1x 055.3206.072	1x 055.3206.072 1x 055.3207.071	1x 055.3206.073 1x 055.3207.071

* Empfohlen ab Türverhältnis
größer als 1:3
Recommended from a door
ratio bigger than 1:3
Recommandé si le rapport de
porte est supérieur à 1:3

* * Kann nur mit einem Dämpfeinzug
eingesetzt werden!
Can only be used with a soft close!
Peut être utilisé seulement avec
amortissement!



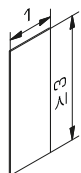
Z = 25 - 60mm



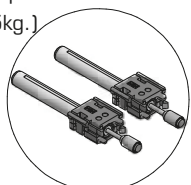
● 055.3206.071 (65kg.)



Optional | Optional | Optionnel
055.3219.051 (65kg.)



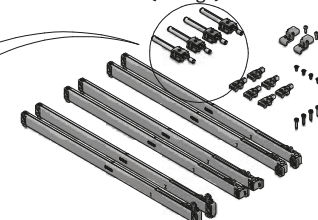
* *
≥ 1:3



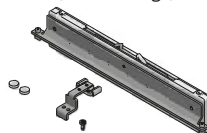
● 055.3206.072 (80kg.)



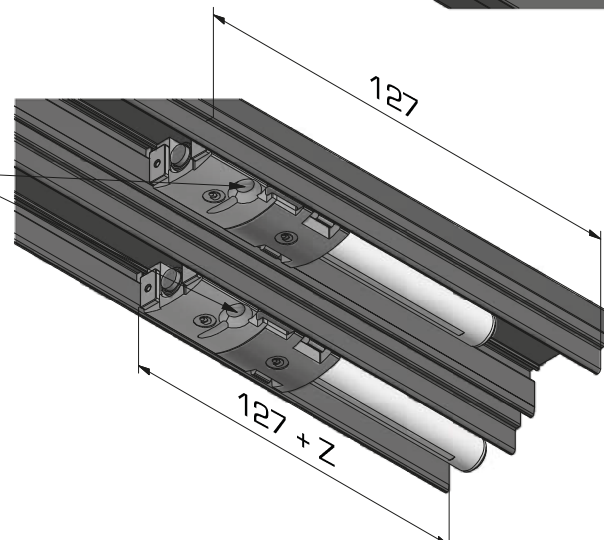
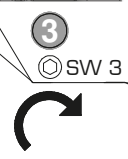
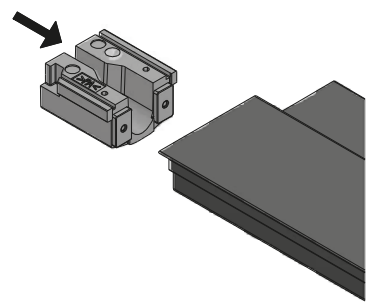
● 055.3206.073 (80kg.)

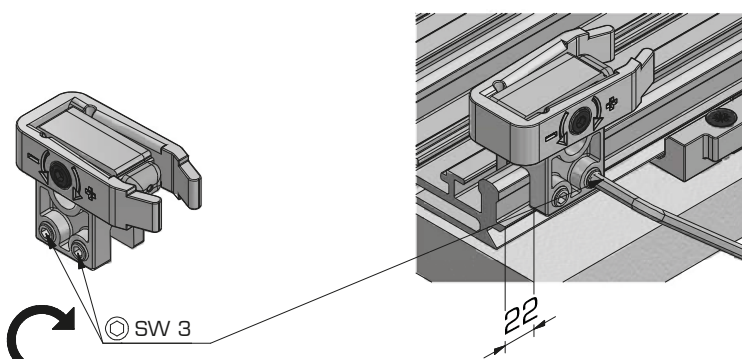
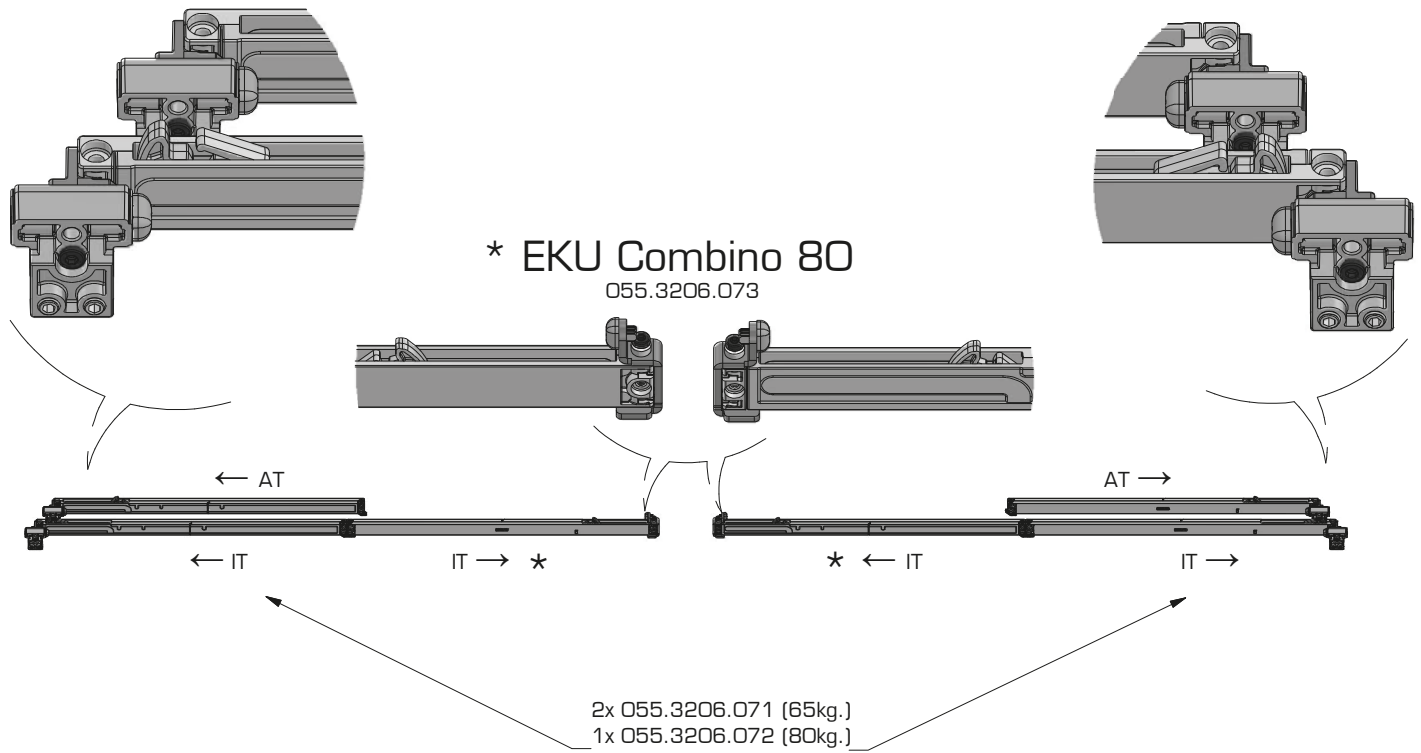
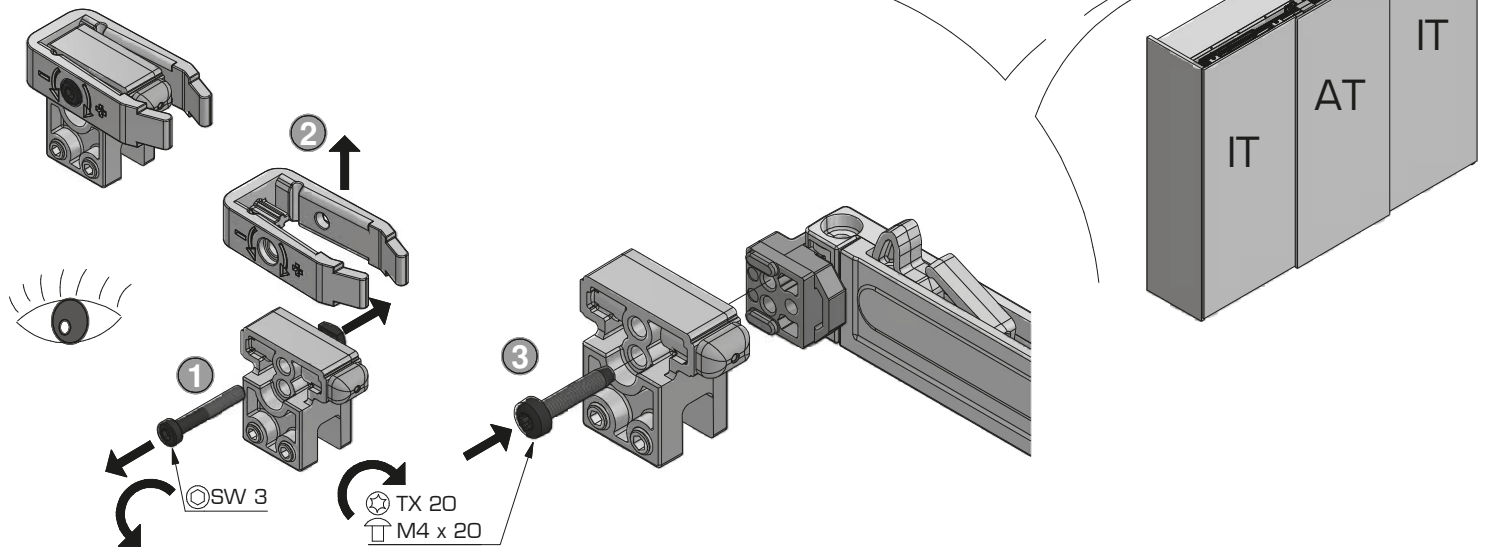


▲ 055.3207.071 (65/80 kg.)



C



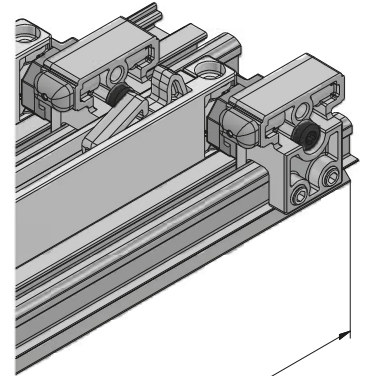
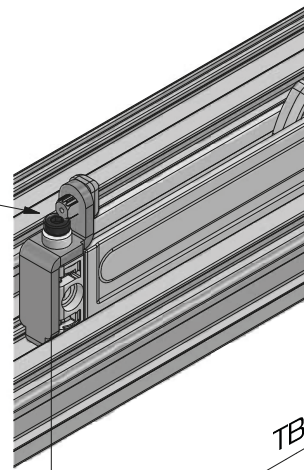
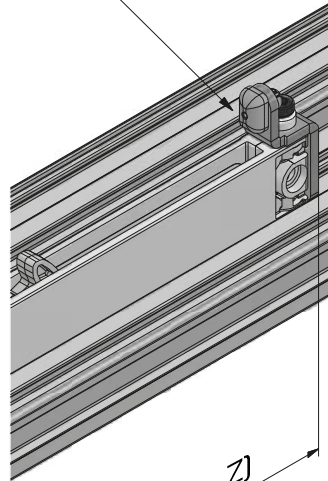
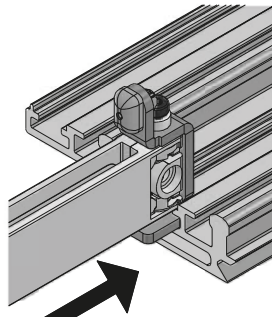
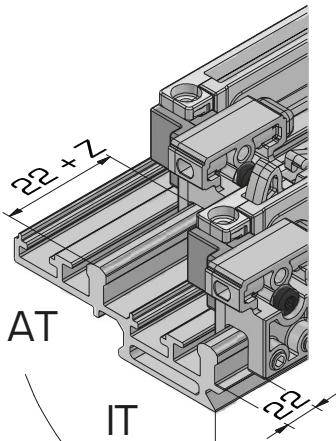


F

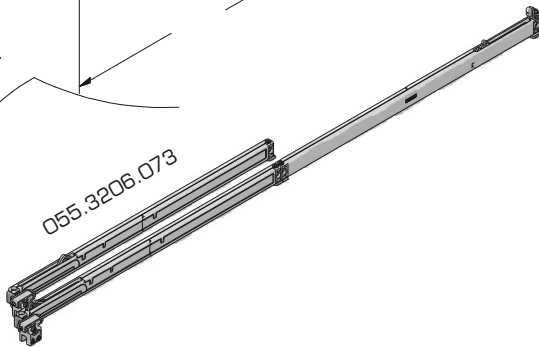
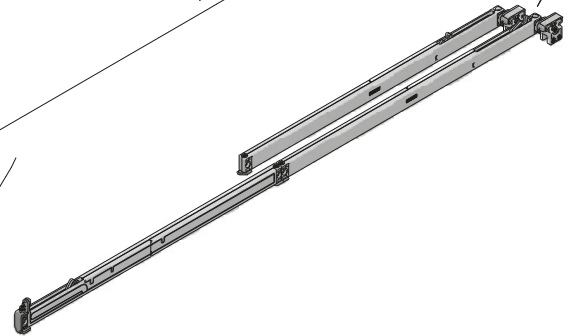


1

* EKU Combino 80
055.3206.073

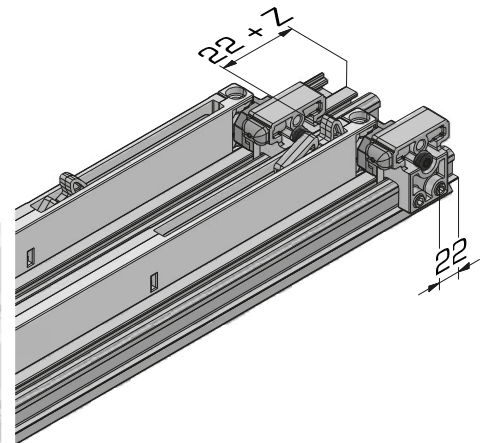


$TB + (207 - Z)$

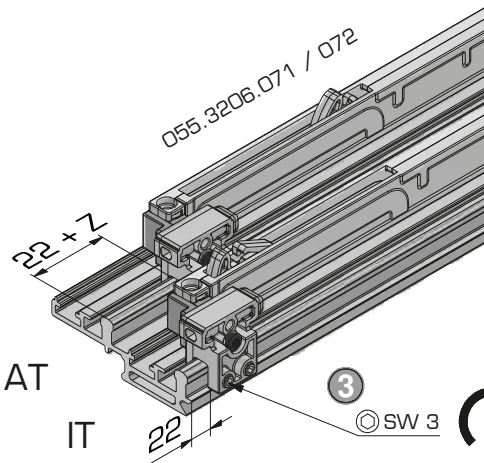


$TB + (207 - Z)$

055.3206.073



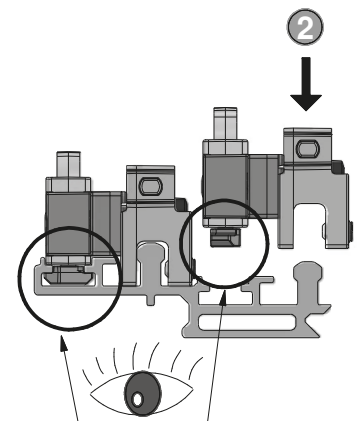
055.3206.071 / 072



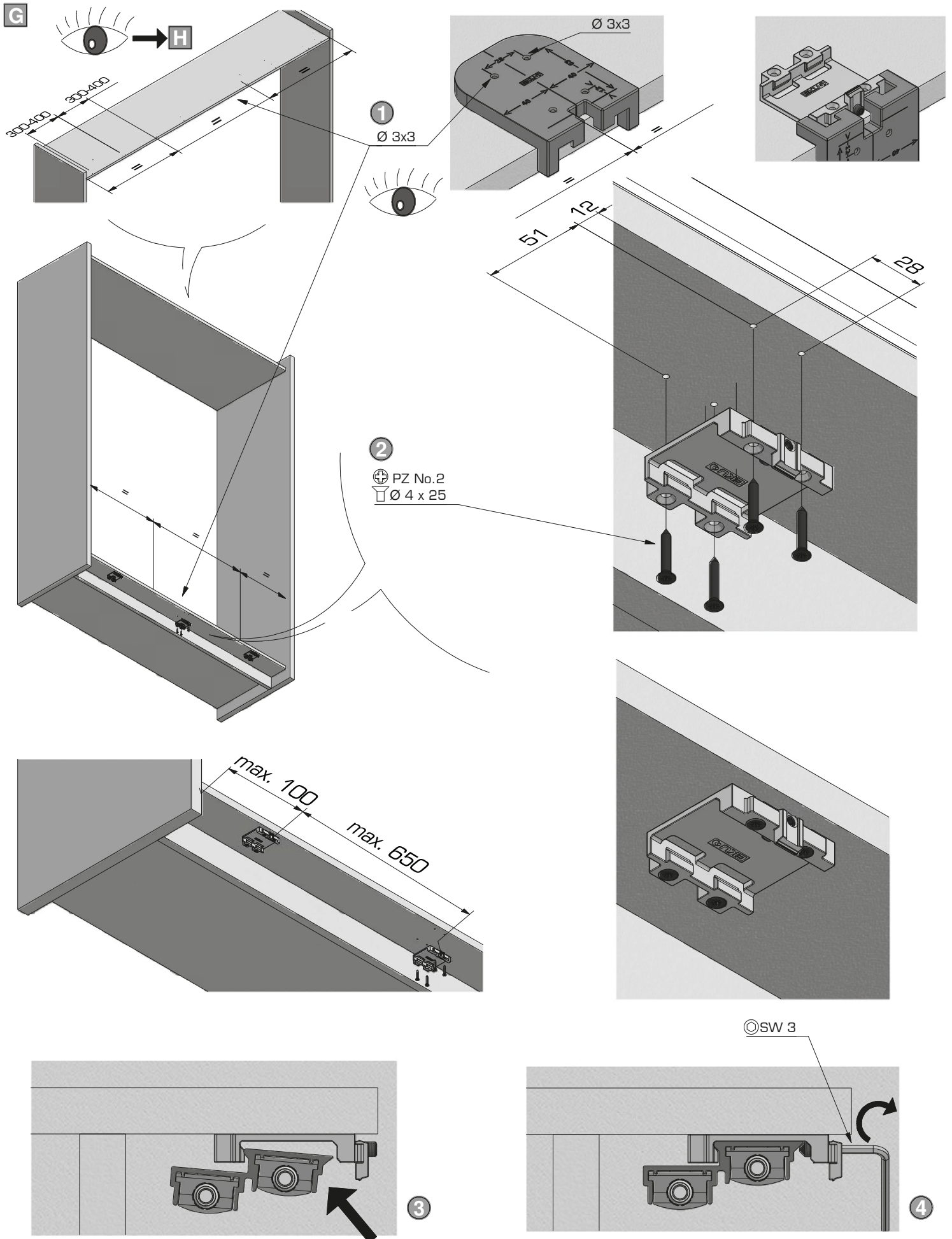
© SW 3

3

© SW 3



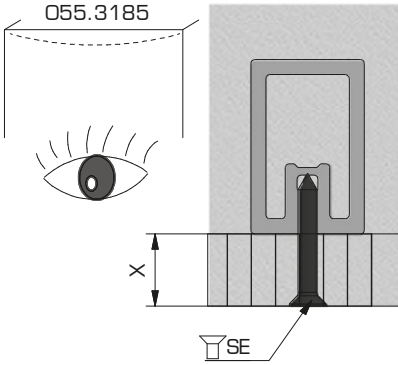
2



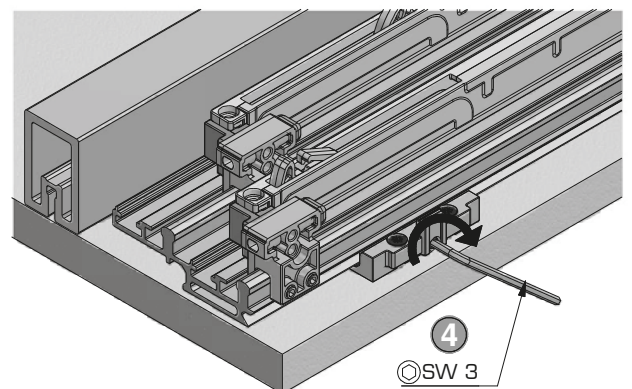
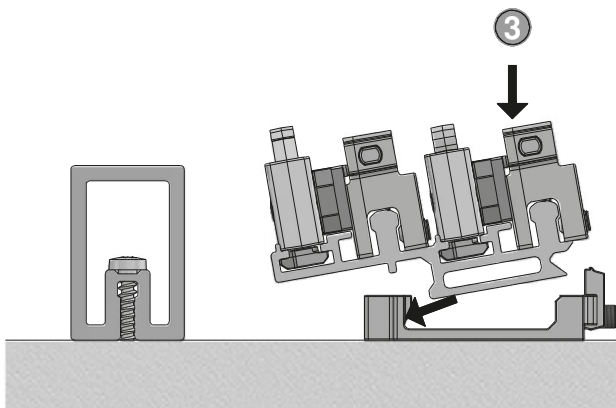
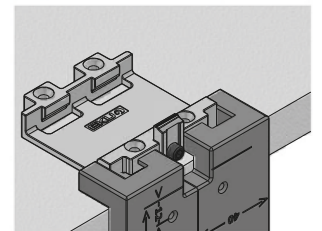
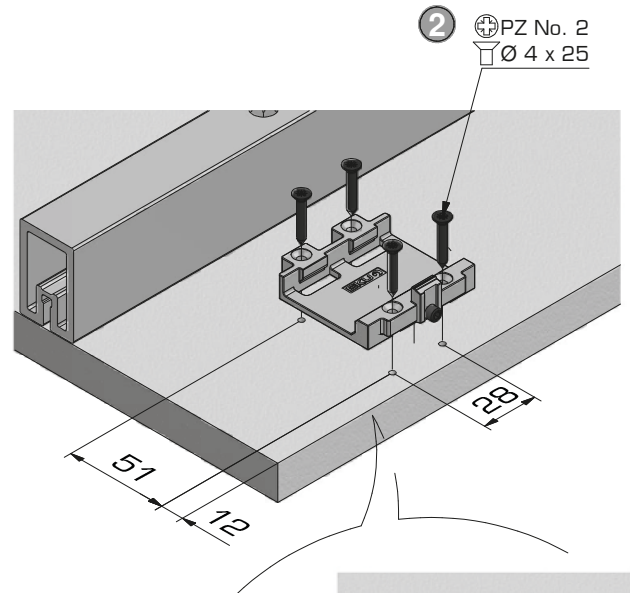
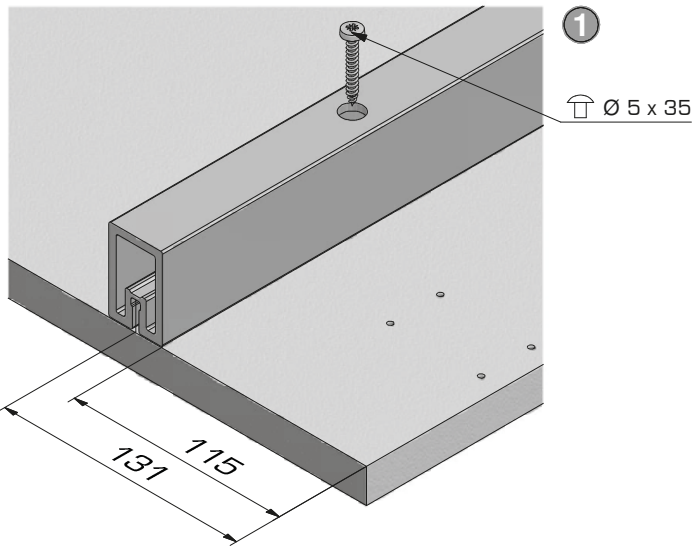
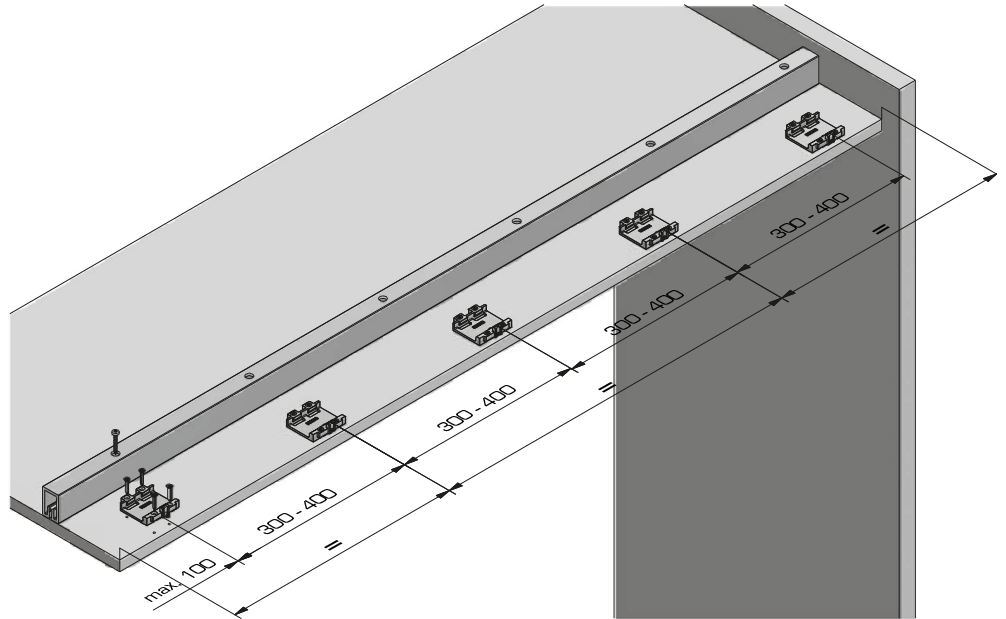
H

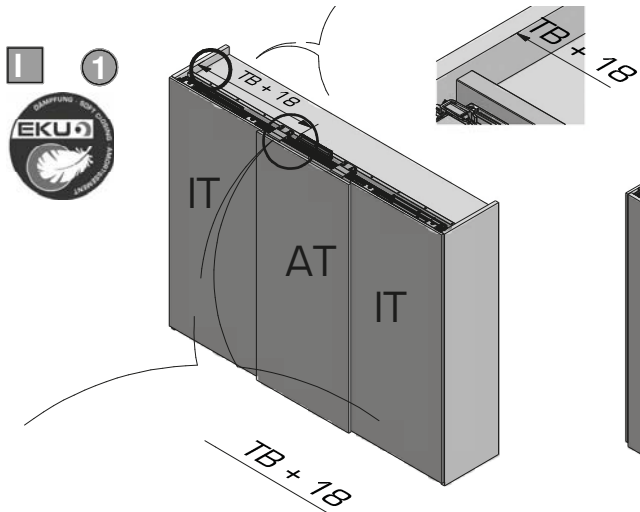
Optional | Optional | Optionnel

O55.3185

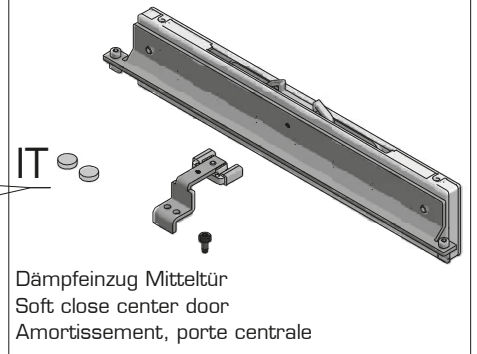


X	SE
19 mm	5 x 35
25 mm	5 x 40

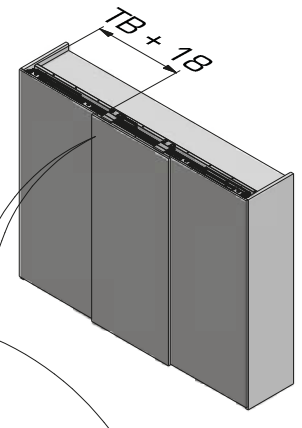
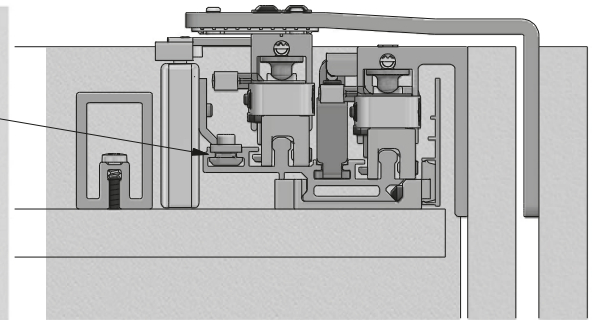
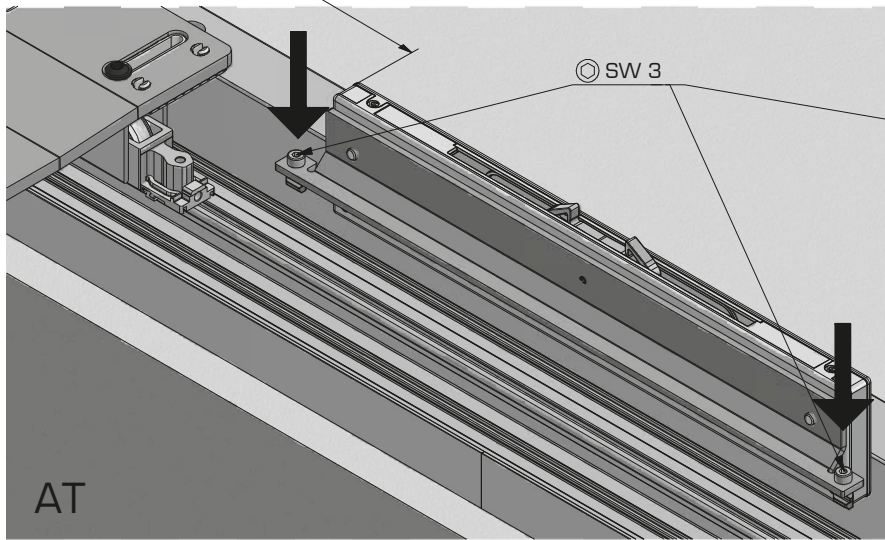




055.3207.071

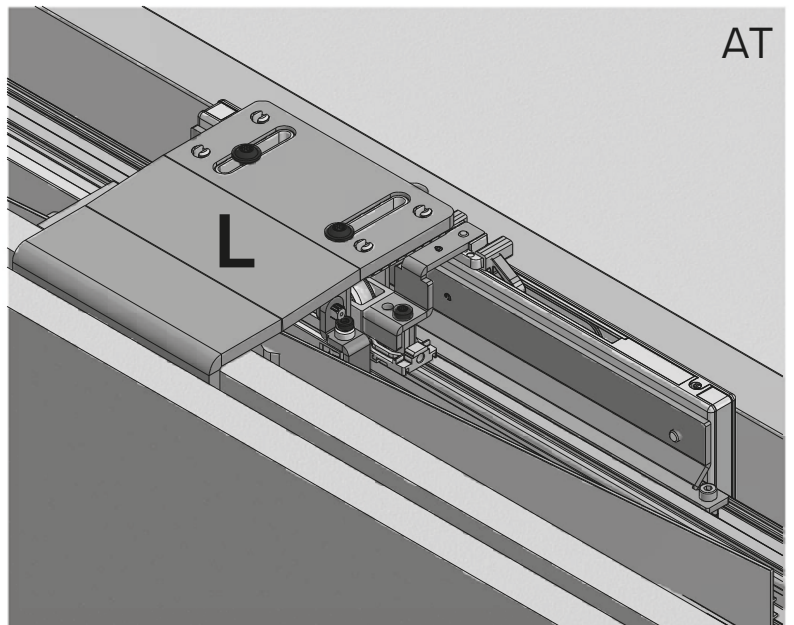
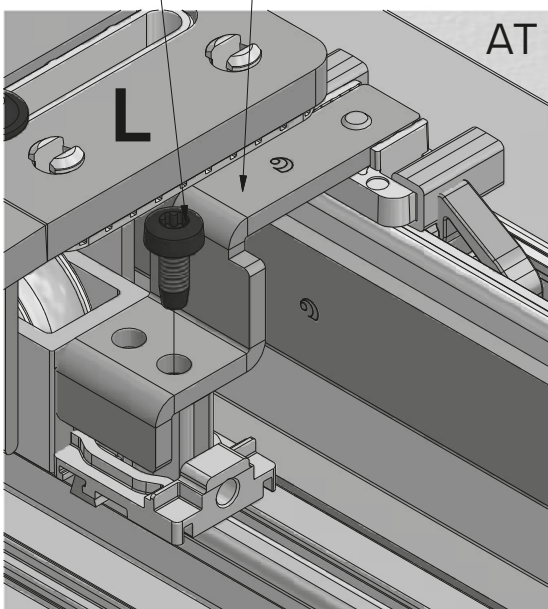


Dämpfeinzug Mitteltür
Soft close center door
Amortissement, porte centrale

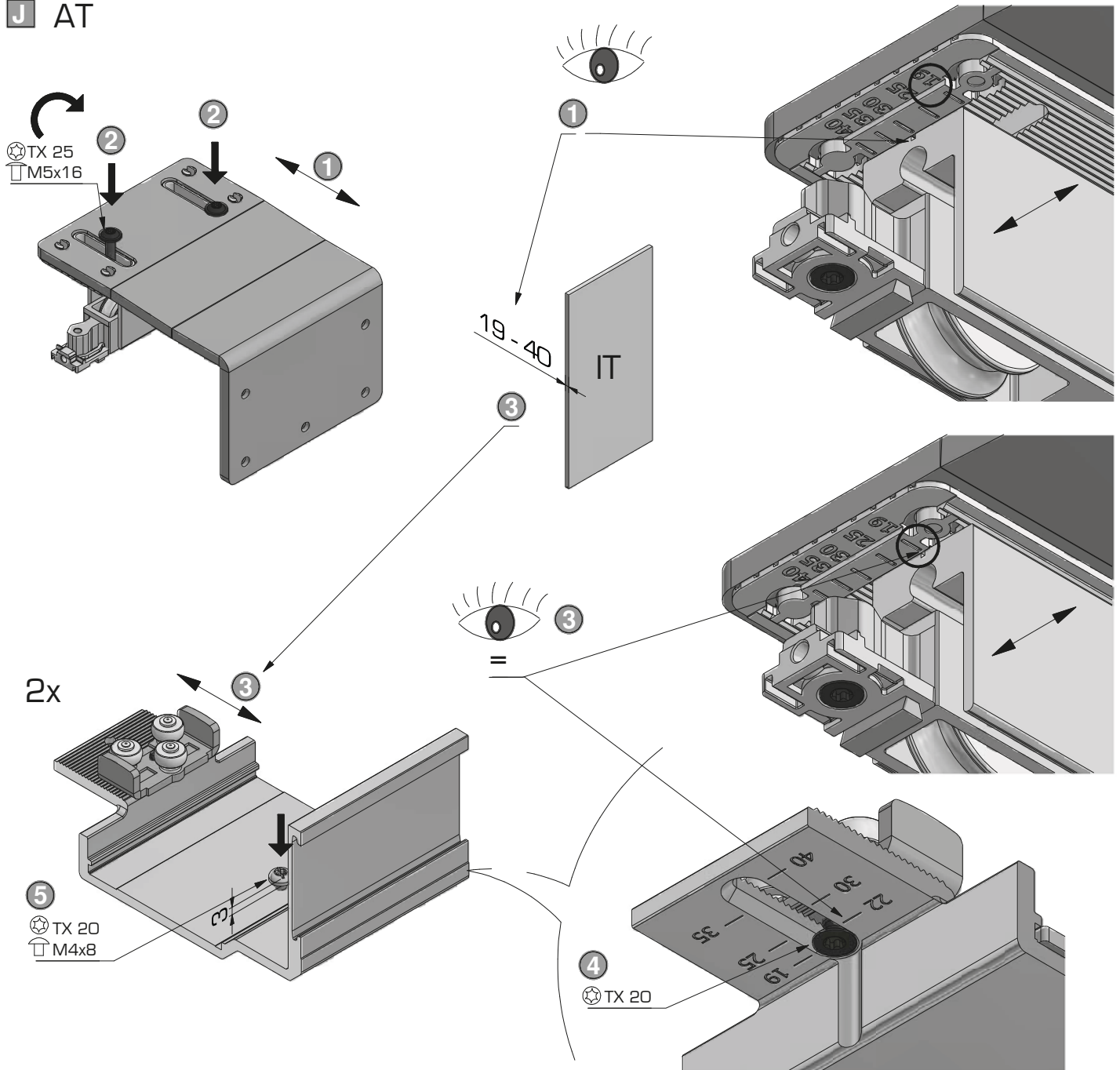


2

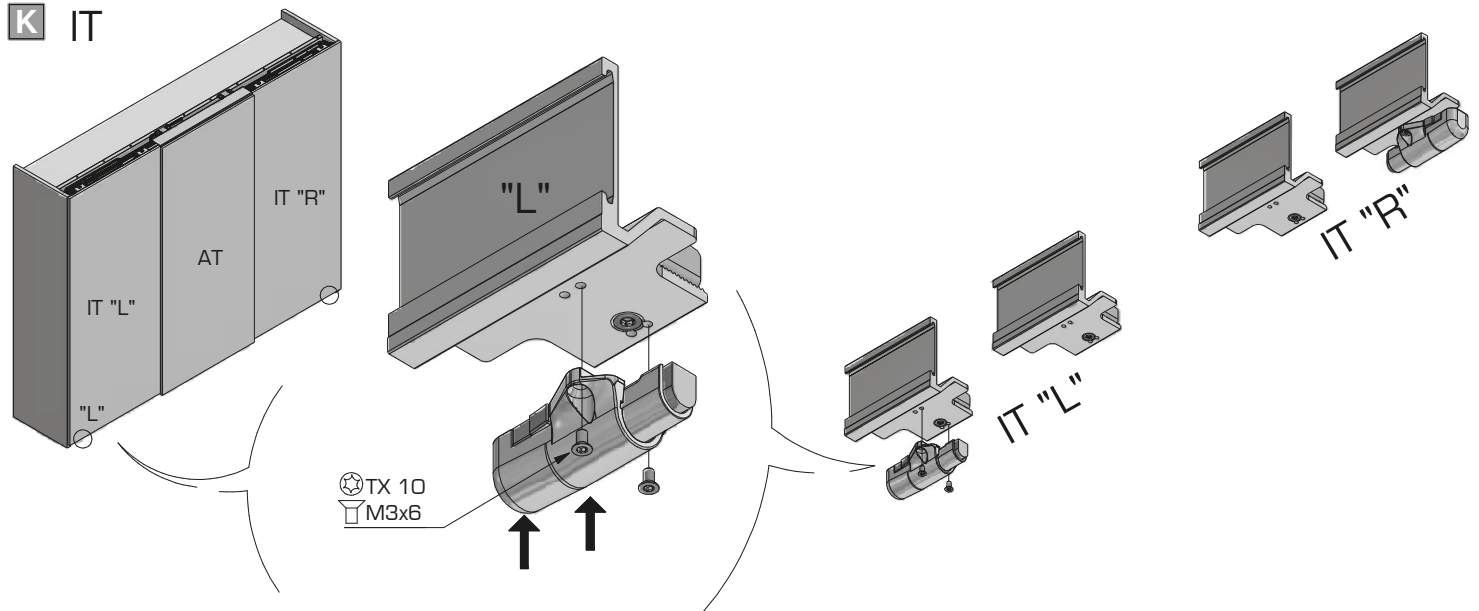
TX 20
M4 x 10



J AT



K IT

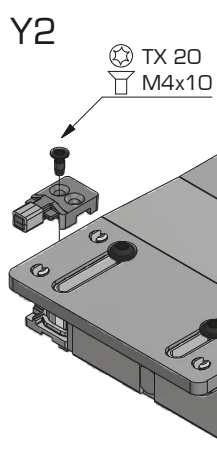
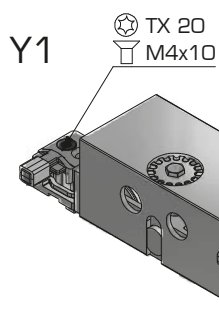
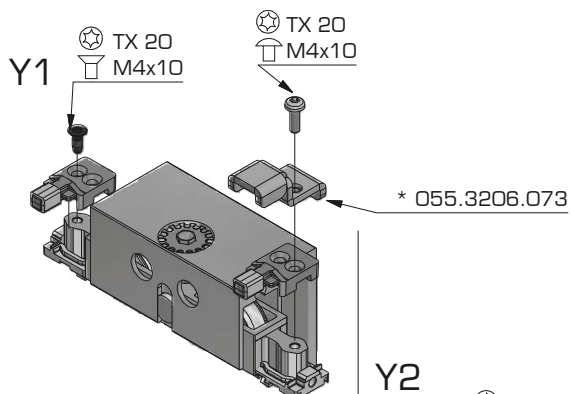
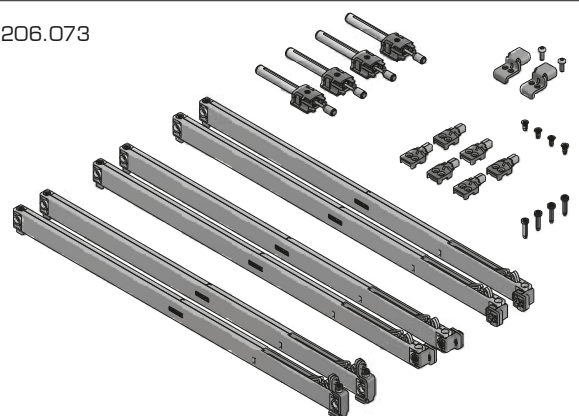


L

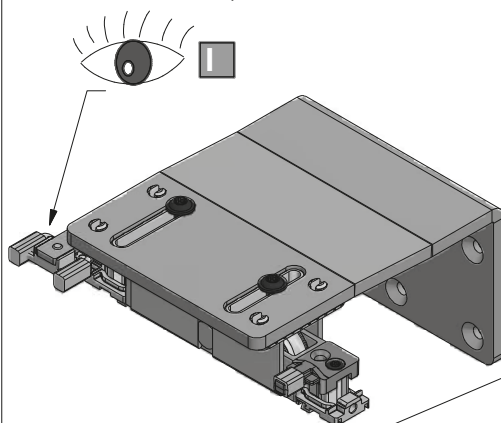


B

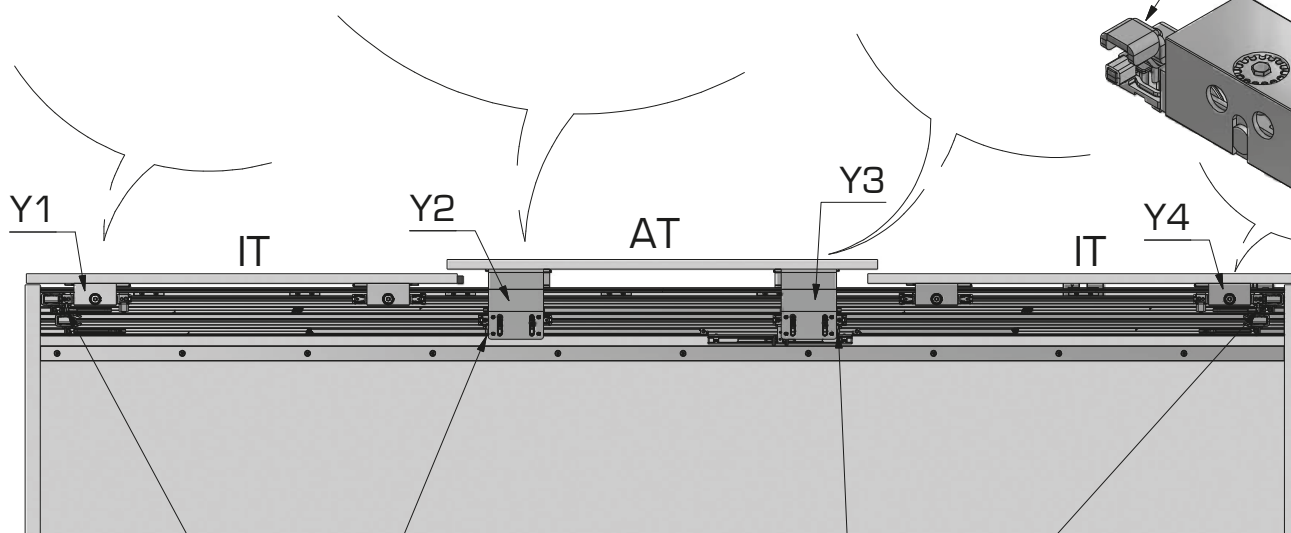
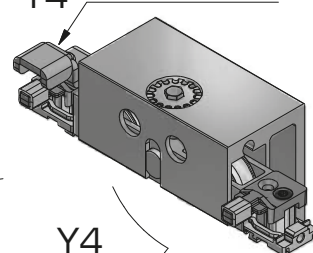
055.3206.073



Y3
Dämpfeinzug Mitteltür
Soft close center door
Amortissement, porte centrale

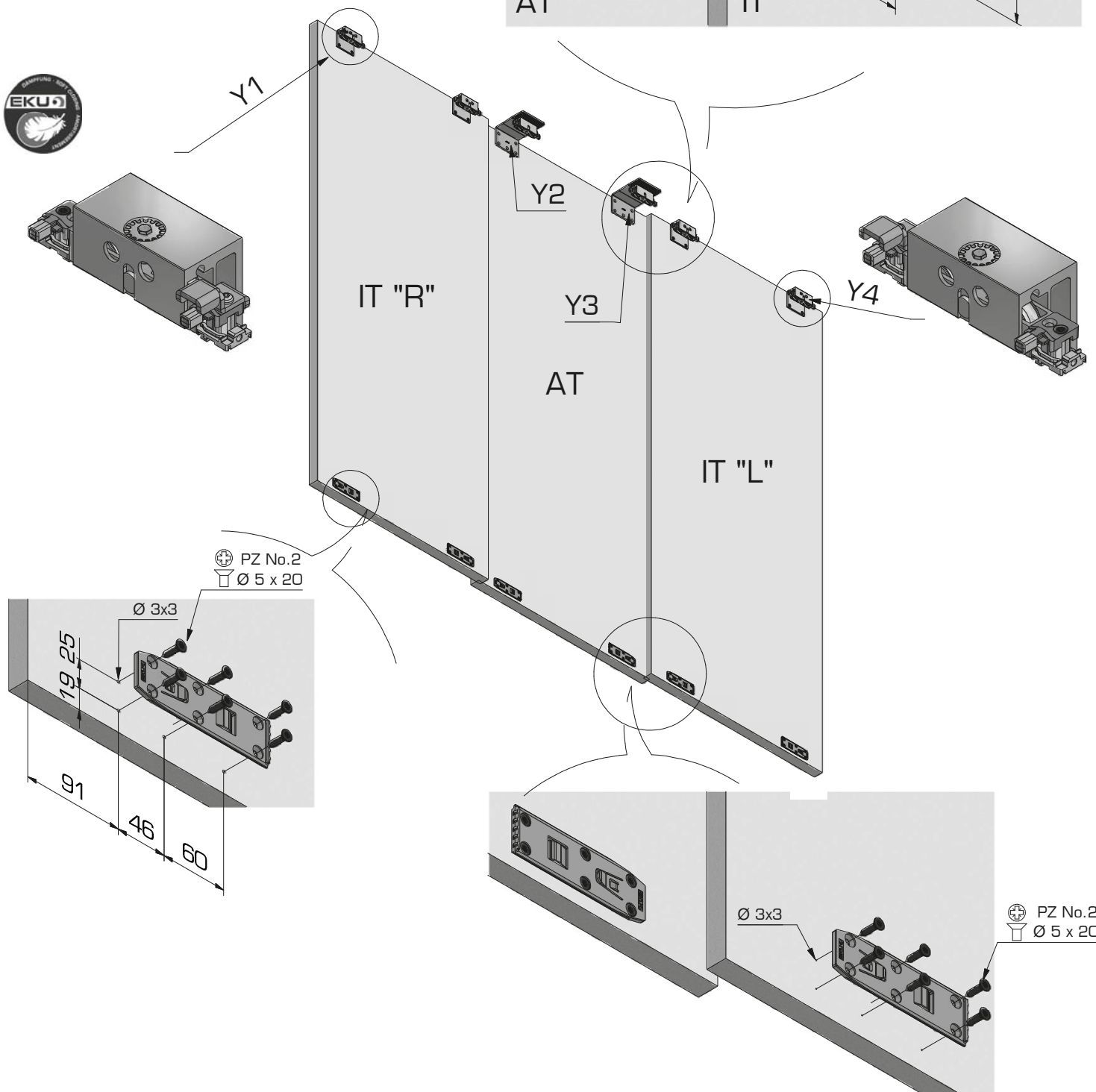
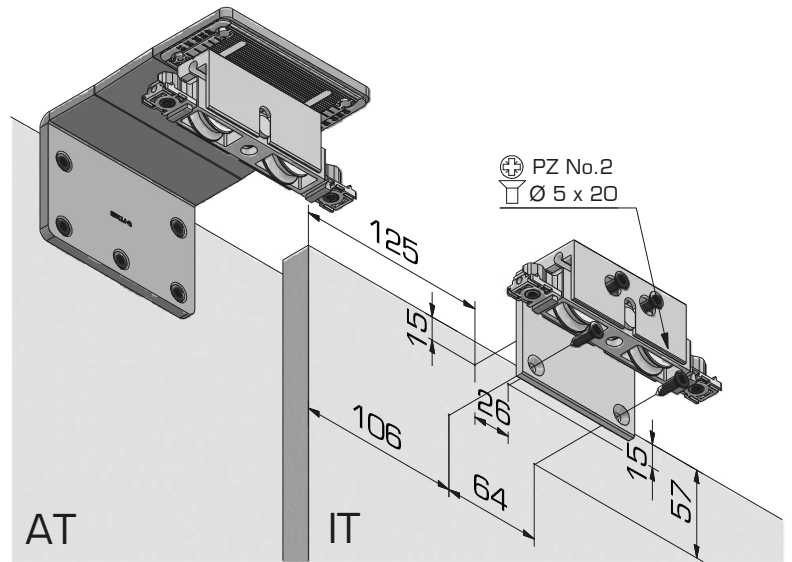
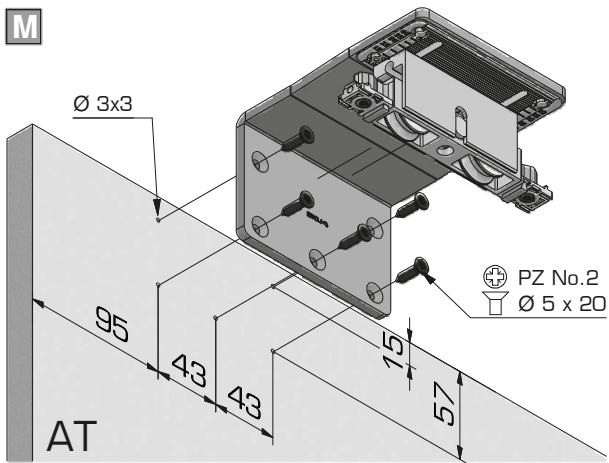


Y4 * 055.3206.073

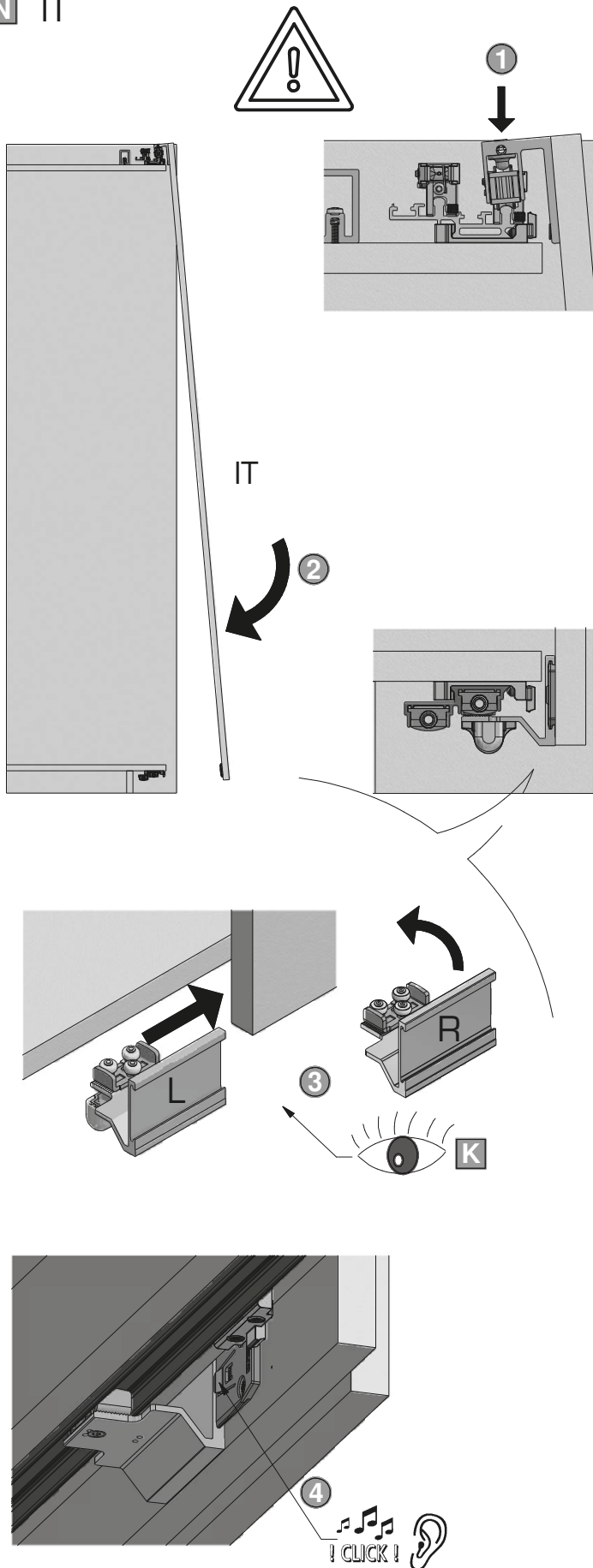


Schliessrichtung
closing direction
sens de fermeture
2x 055.3206.071 (65kg.)
1x 055.3206.072 (80kg.)

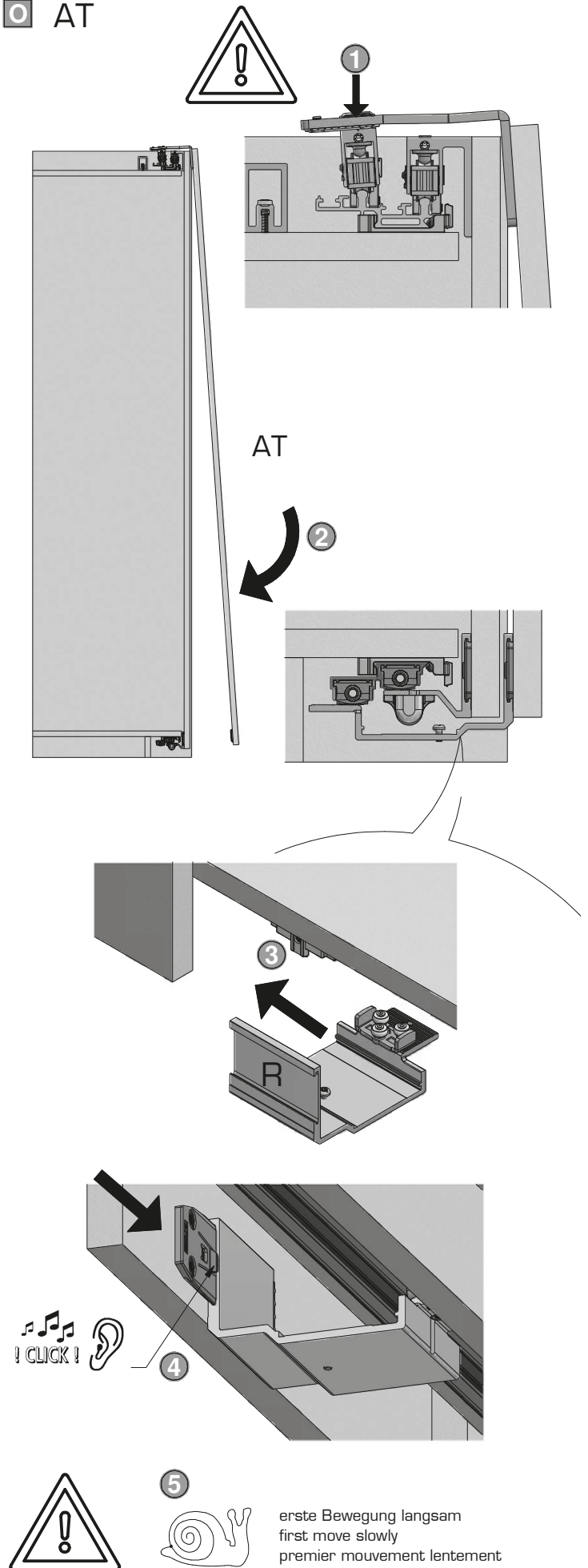
M



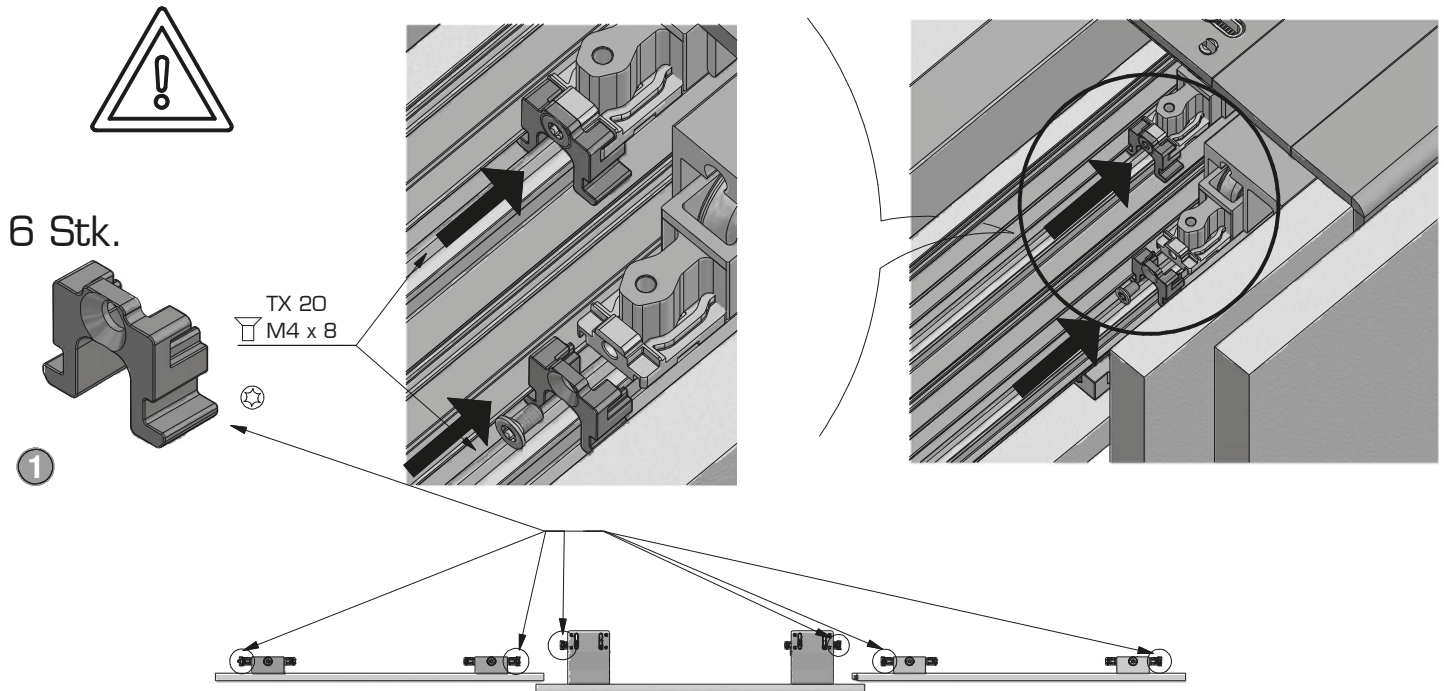
N IT



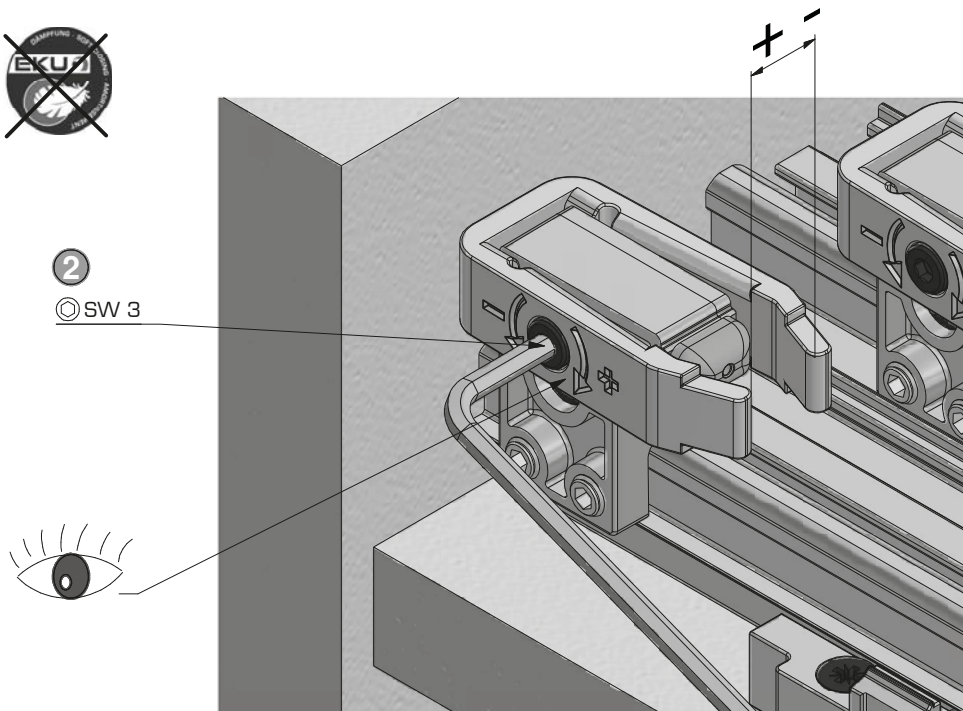
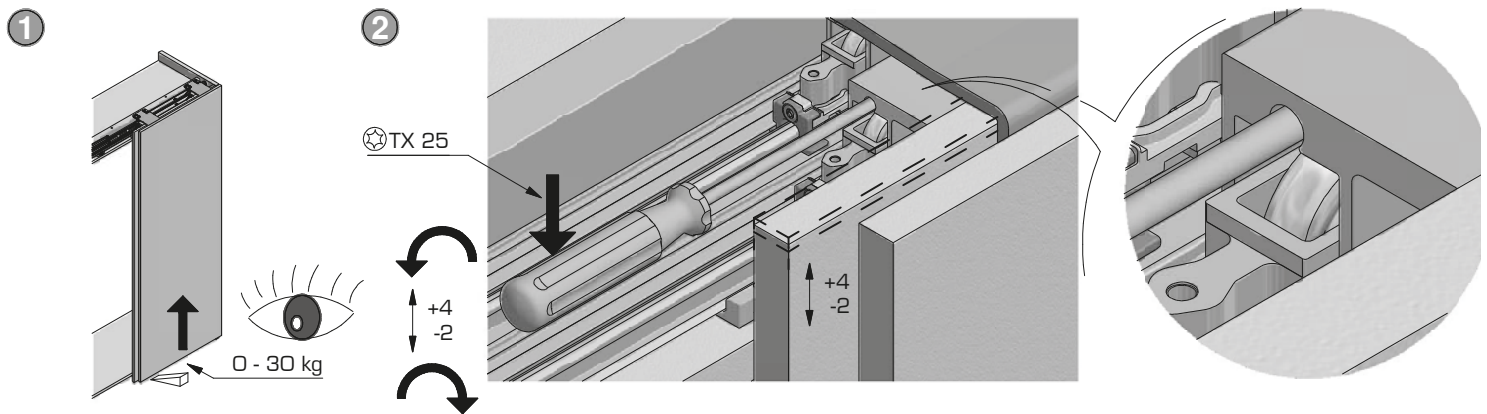
O AT



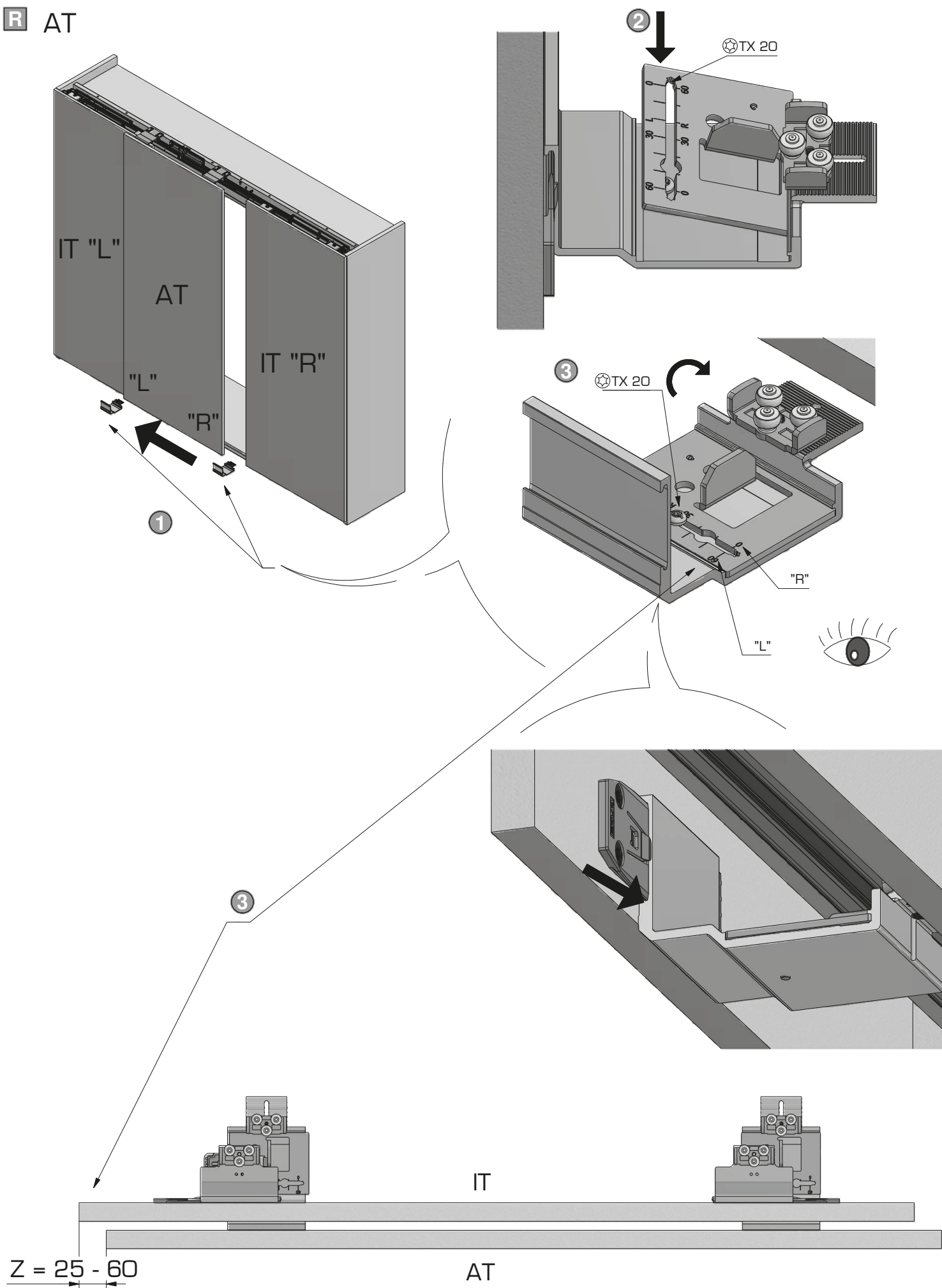
P Aushängesicherung | figurehead security | sécurité figure de proue



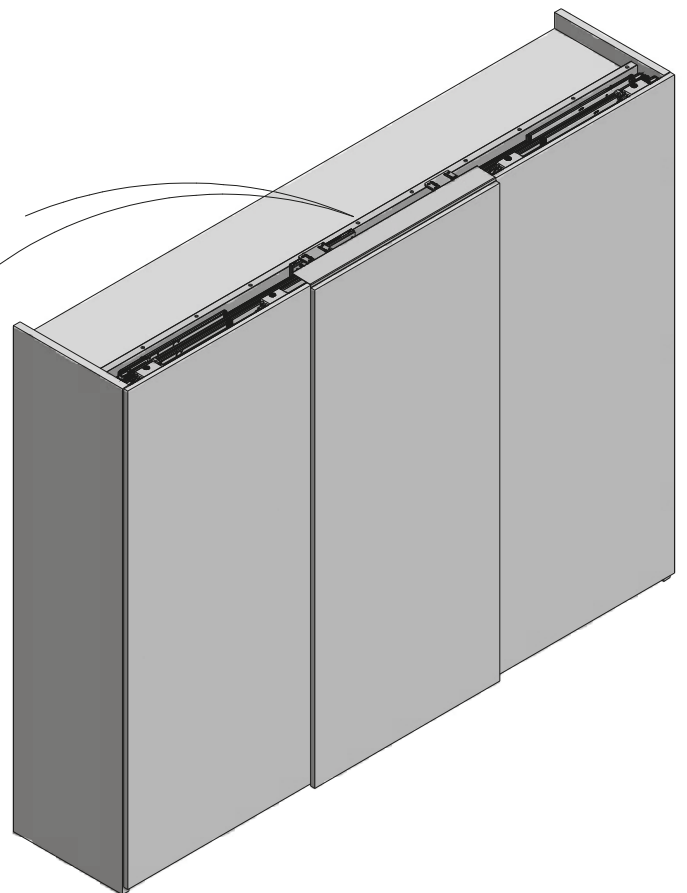
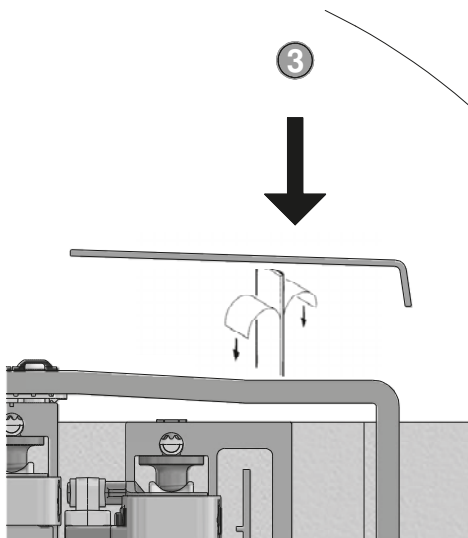
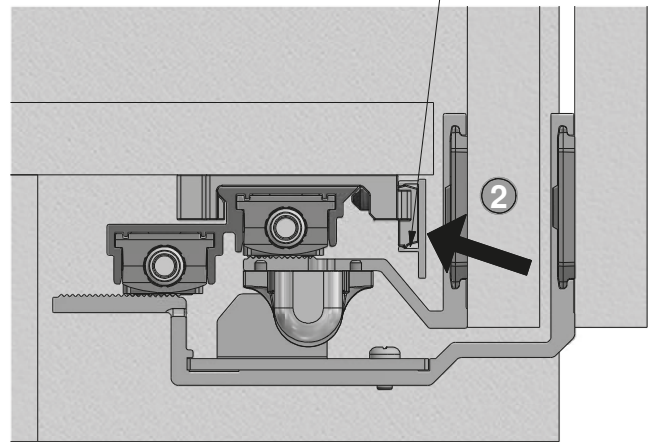
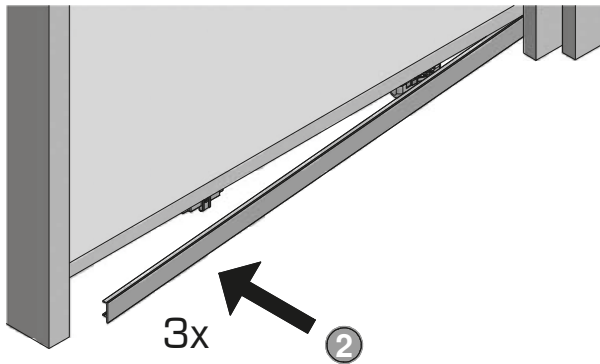
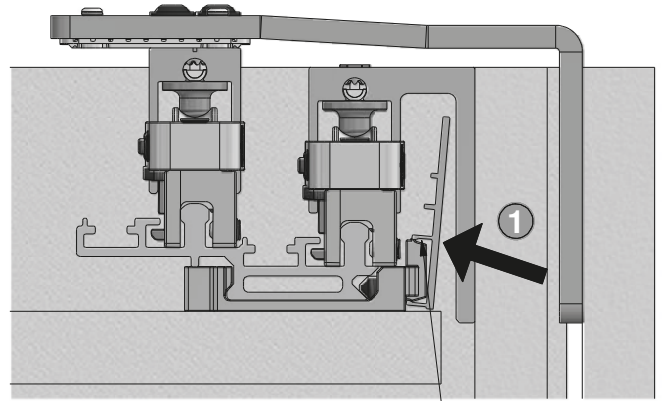
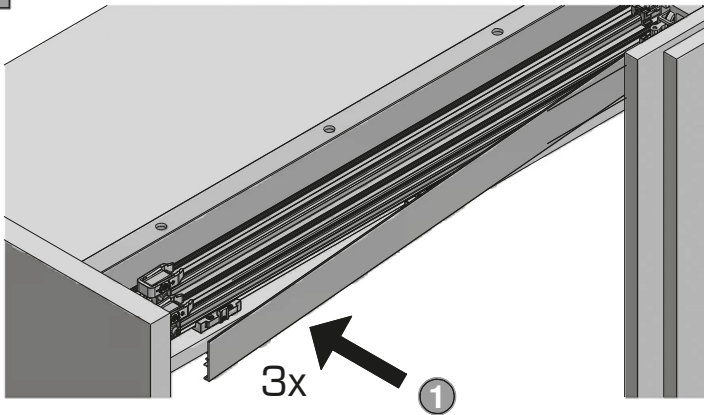
Q Justieren | adjust | ajuster



R AT



S



T Türdemontage | door dismounting | demontage de la porte

