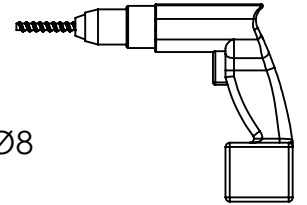
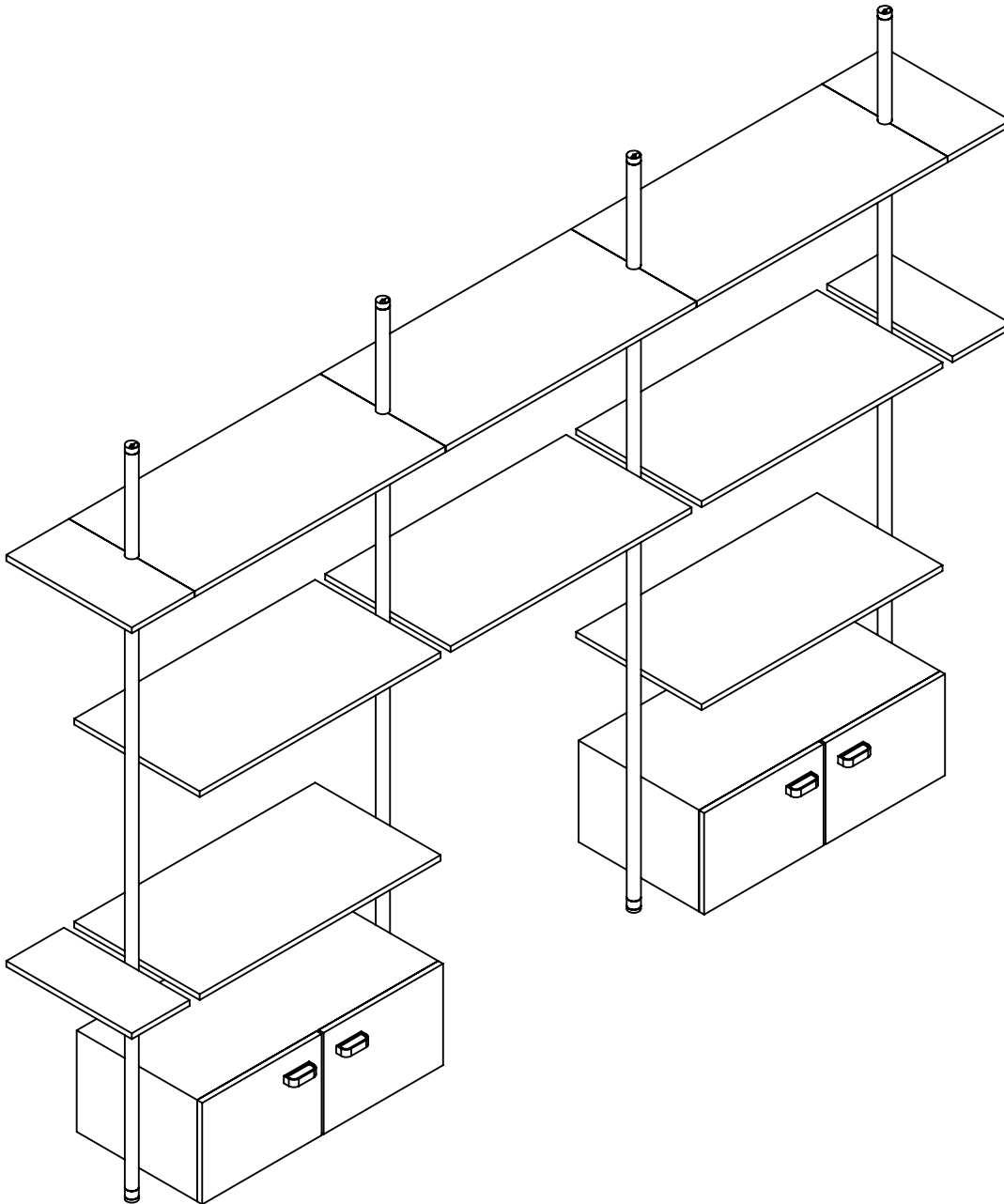


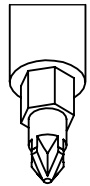
# CYCLOS

A - Istruzioni di montaggio montanti a soffitto  
A - Ceiling upright assembly instructions

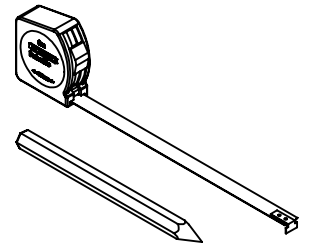


$\varnothing 8$

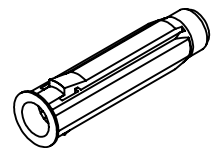
avvitatore  
*screwdriver*



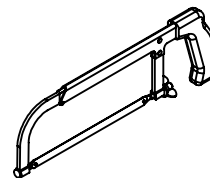
inserto a stella  
*star shape insert*



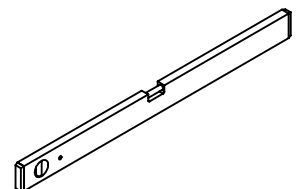
incisore e metro  
*engraver and meter*



tassello  
*expansion plug*



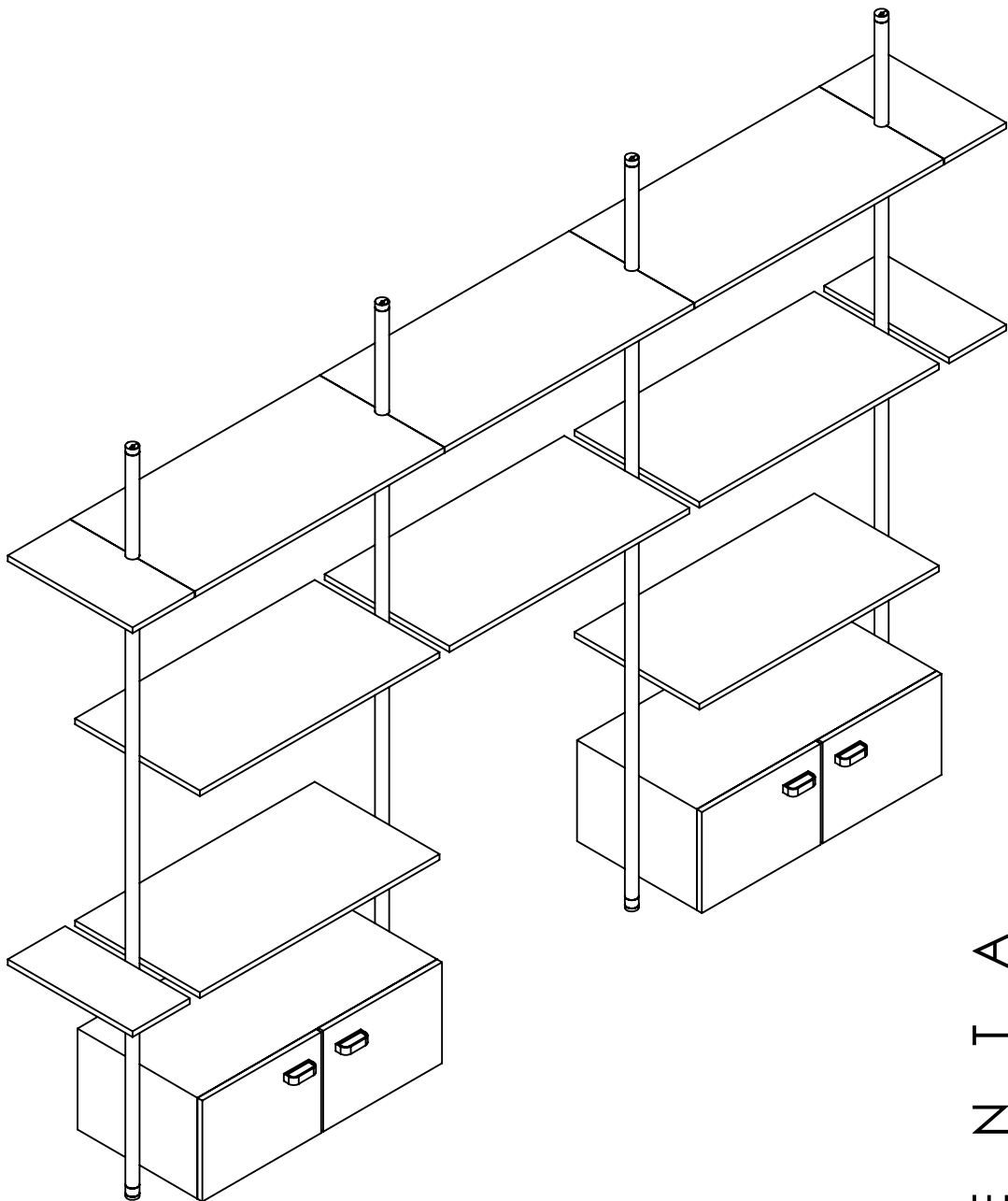
sega  
*saw*



livella  
*level*

# CYCLOS

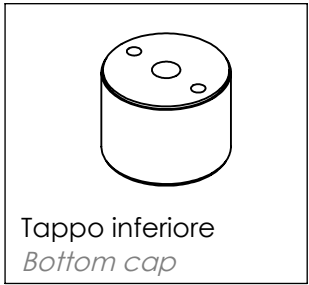
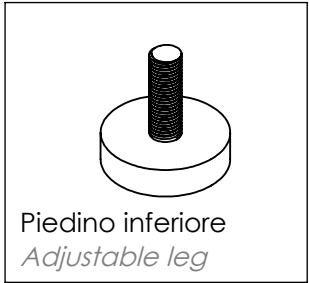
A - Istruzioni di montaggio montanti a soffitto  
A - Ceiling upright assembly instructions



P R O F I L I



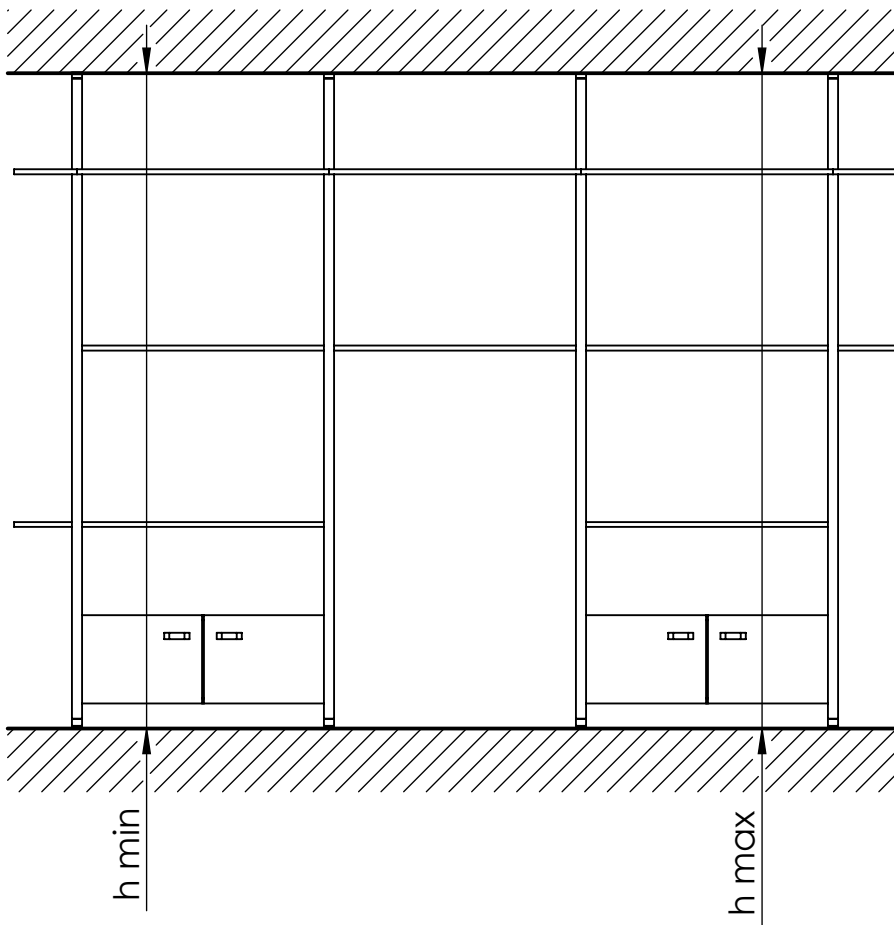
F E R R A M E N T A



# CYCLOS

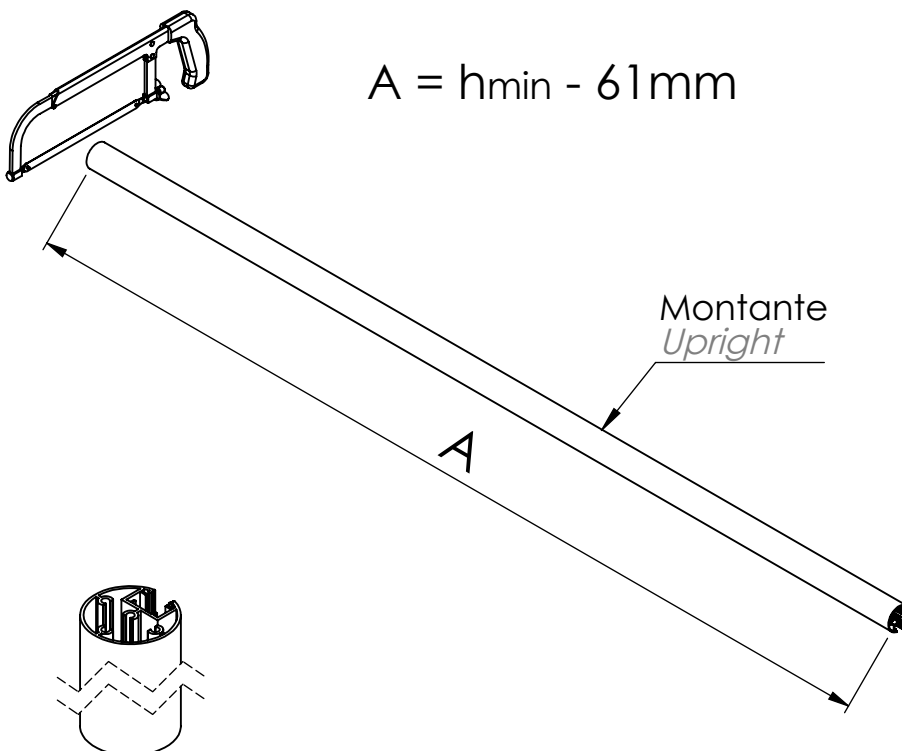
A - Istruzioni di montaggio montanti a soffitto  
A - Ceiling upright assembly instructions

A1



$$h_{\max} - h_{\min} = \max 20\text{mm}$$

A2



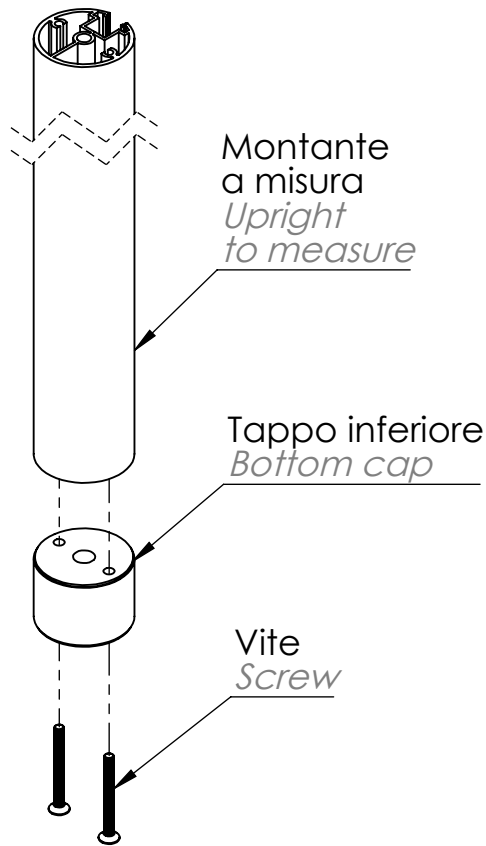
$$A = h_{\min} - 61\text{mm}$$

Tagliare il profilo del  
montante a misura  
*Cut the upright profile  
to the desired  
dimension*

# CYCLOS

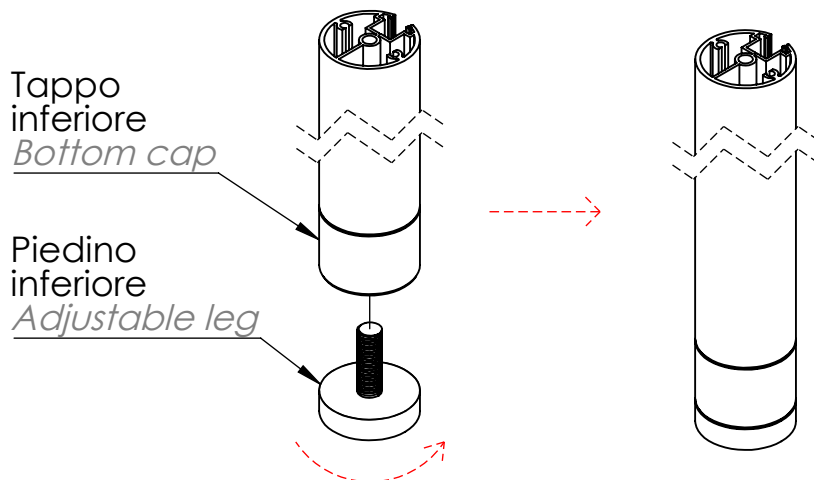
A - Istruzioni di montaggio montanti a soffitto  
A - Ceiling upright assembly instructions

A3



Avvitare il tappo inferiore nel montante tagliato a misura  
*Screw the lower cap into the upright*

A4



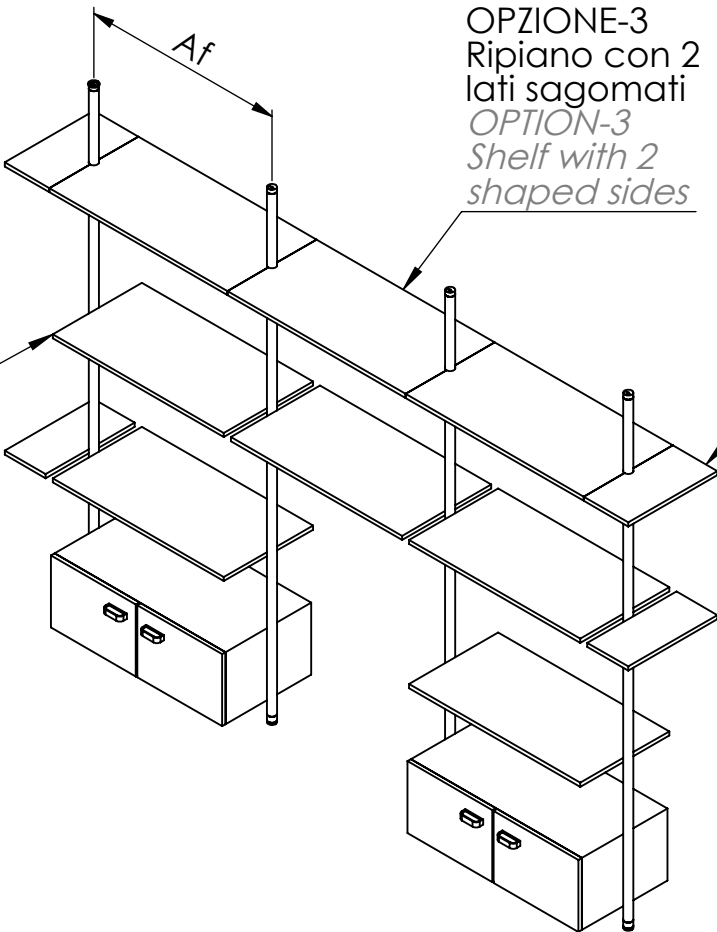
Avvitare il piedino inferiore fino alla totale chiusura con il tappo inferiore  
*Screw the adjustable leg until the complete fixing with the bottom cap*

# CYCLOS

A - Istruzioni di montaggio montanti a soffitto  
A - Ceiling upright assembly instructions

A5

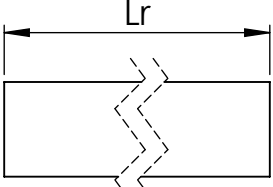
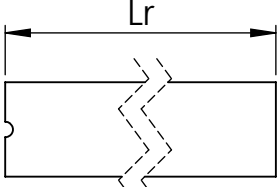
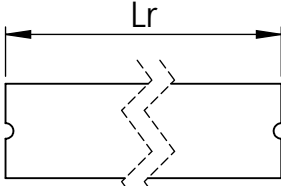
OPZIONE-1  
Ripiano non  
sagomato  
*OPTION-1  
Shelf not  
shaped*



OPZIONE-3  
Ripiano con 2  
lati sagomati  
*OPTION-3  
Shelf with 2  
shaped sides*

OPZIONE-2  
Ripiano con 1  
lato sagomato  
*OPTION-2  
Shelf with 1  
shaped side*

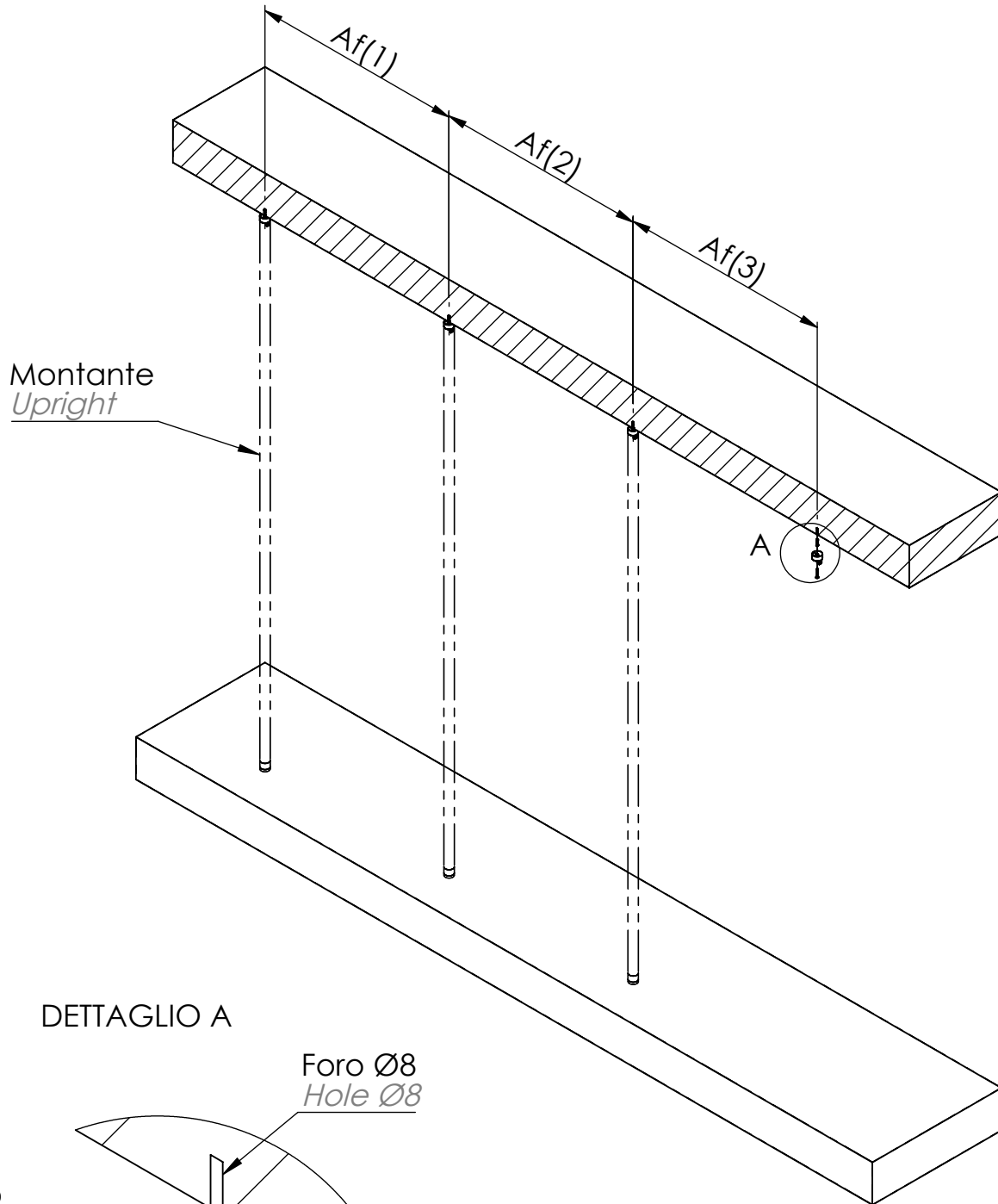
L'asse tra i montanti (Af)  
dipende dal tipo di ripiano e  
dalla sua larghezza, a  
riguardo consultare la  
tabella sottostante  
*The axis between the  
uprights (Af) depends on the  
type of shelf and its width,  
please consult the below  
scheme*

Af (asse foratura) Af (drilling axis)	Lr (larghezza ripiano) Lr (shelf width)
$Af = Lr + 40mm$	 Ripiano non sagomato (OPZIONE-1) <i>Shelf not shaped (OPTION-1)</i>
$Af = Lr + 20mm$	 Ripiano con 1 lato sagomato (OPZIONE-2) <i>Shelf with 1 shaped side (OPTION-2)</i>
$Af = Lr$	 Ripiano con 2 lati sagomati (OPZIONE-3) <i>Shelf with 2 shaped sides (OPTION-3)</i>

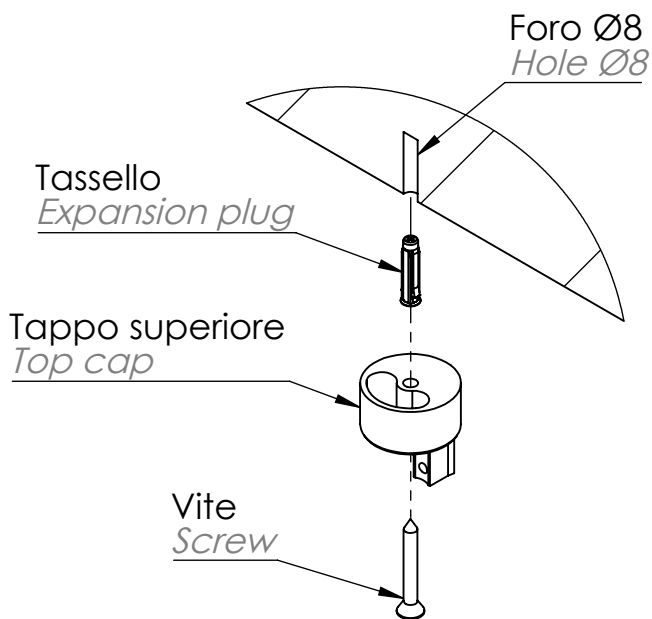
# CYCLOS

A - Istruzioni di montaggio montanti a soffitto  
A - Ceiling upright assembly instructions

A6



DETTAGLIO A



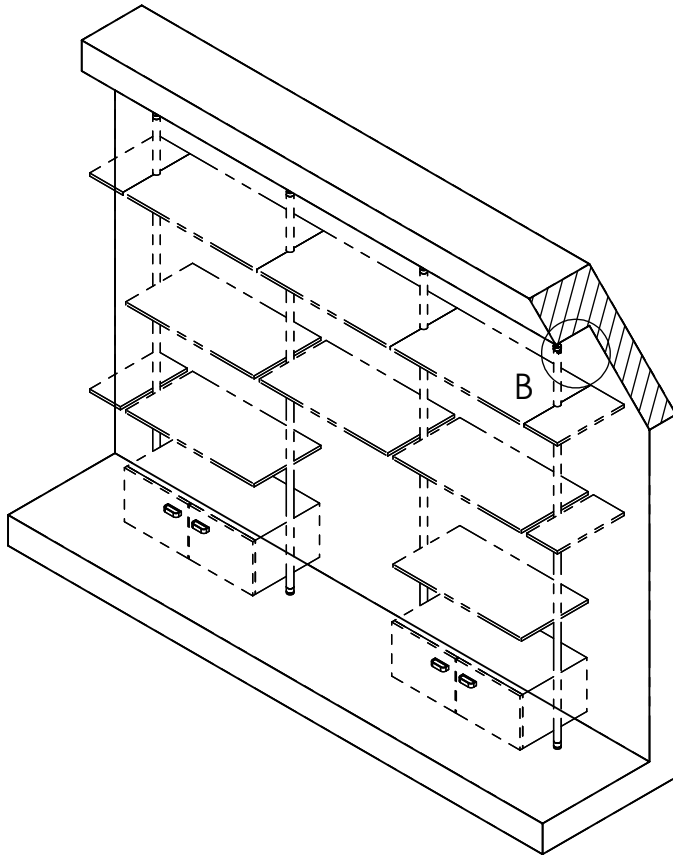
Forare il soffitto con punta Ø8 e  
fissare tutti i tappi superiori  
*Drill the ceiling with a Ø8 drill bit  
and secure all top caps*

# CYCLOS

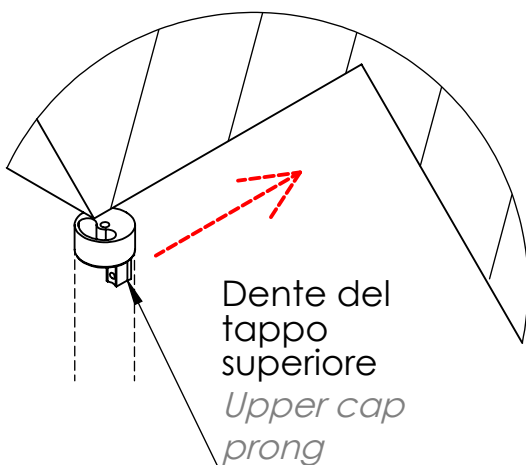
A - Istruzioni di montaggio montanti a soffitto  
A - Ceiling upright assembly instructions

A7

Per parete vicina a muro  
*For media walls close to walls*

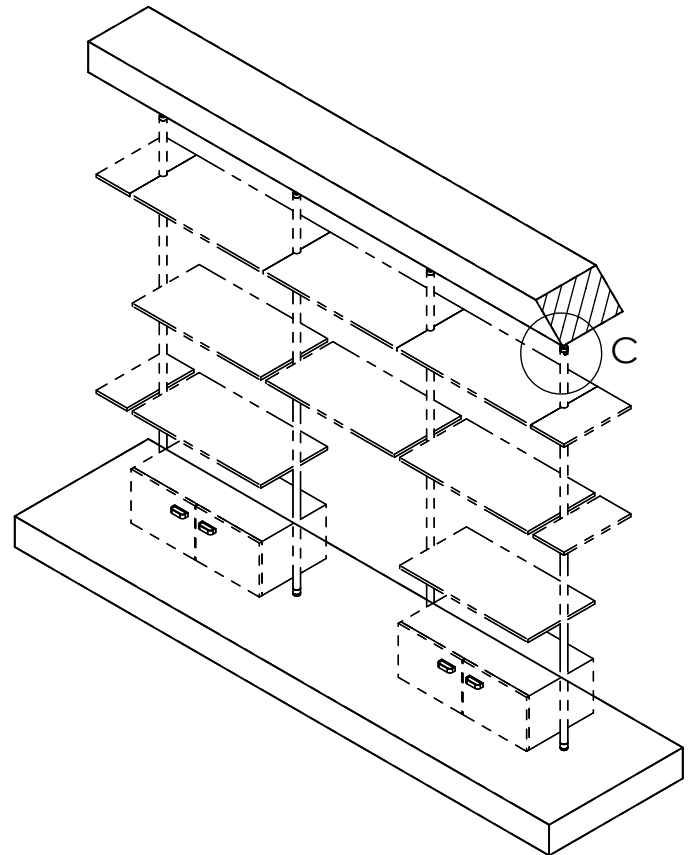


DETTAGLIO B



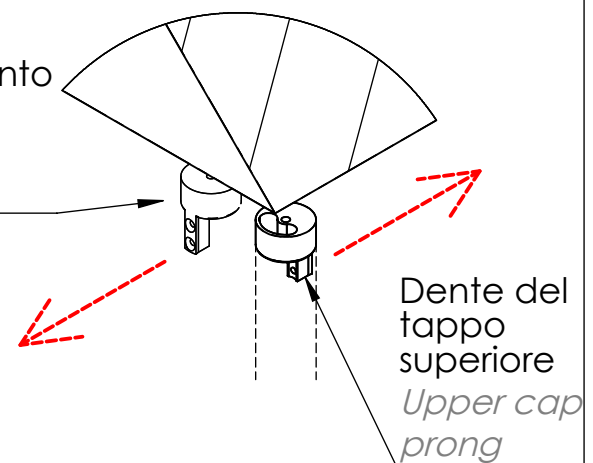
Rivolgere il dente del tappo superiore verso la parete in muratura, in modo che la cava del montante sia rivolta verso il muro  
*Turn the top cap prong forward towards the masonry wall, so as the upright slot faces the wall itself*

Per parete centrale  
*For central media wall*



DETTAGLIO C

Orientamento alternativo  
*Alternative orientation*

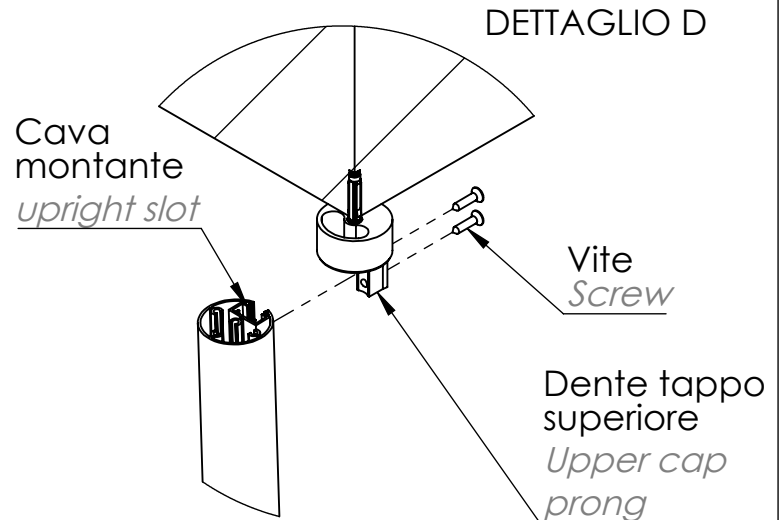
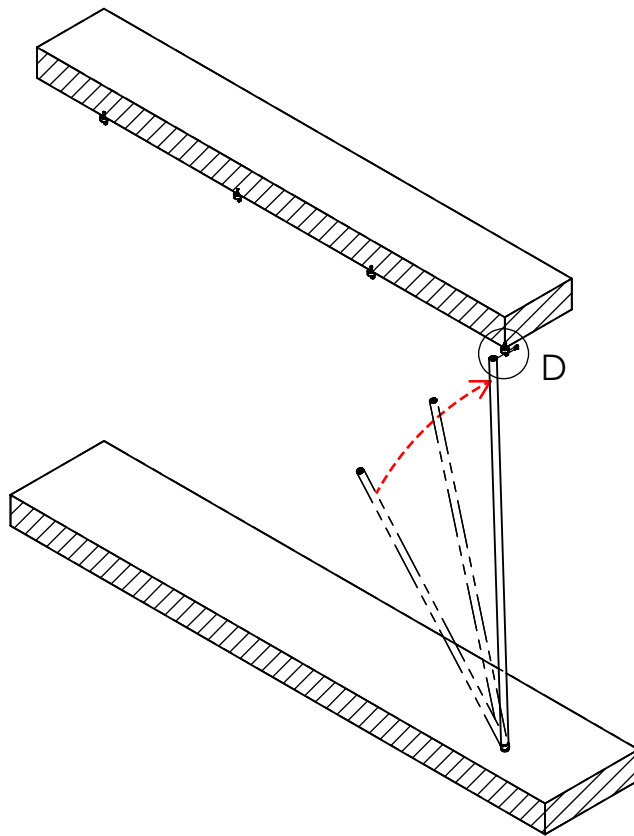


Rivolgere il dente del tappo superiore ortogonalmente ai ripiani  
*Turn the upper cap prong orthogonal to the shelves*

# CYCLOS

## A - Istruzioni di montaggio montanti a soffitto A - Ceiling upright assembly instructions

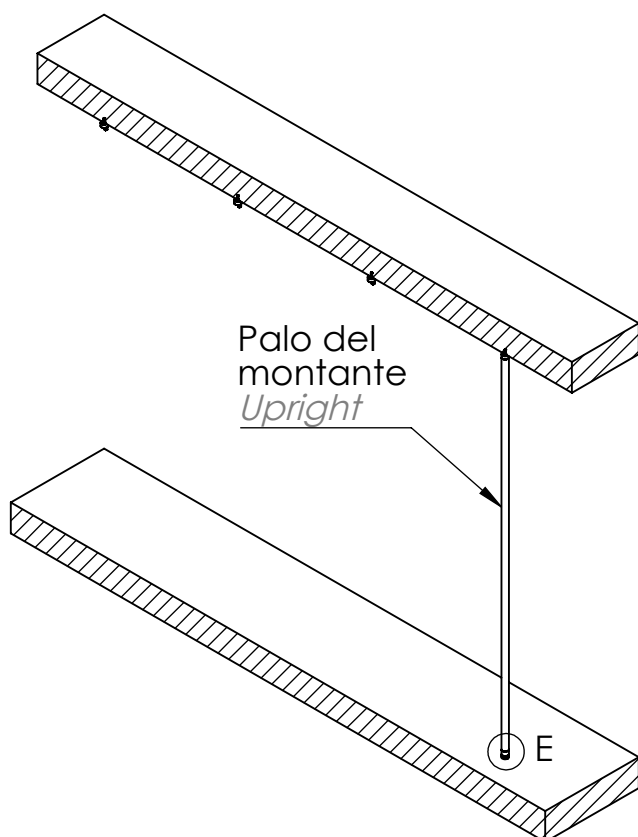
A8



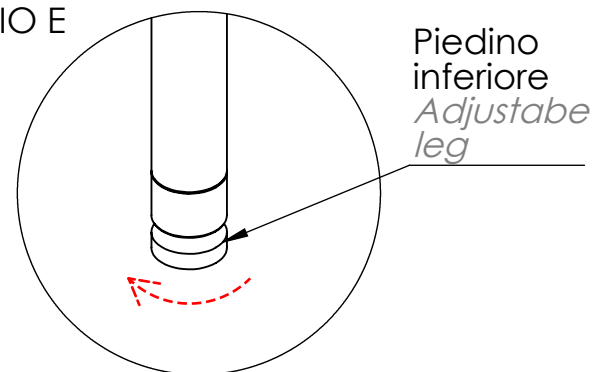
Innestare il montante al tappo superiore, bloccandolo con le due viti

*Insert the upright slot into the upper cap prong and fix it with the given screws*

A9



DETTAGLIO E



Svitare il piedino inferiore di quanto serve per mettere il palo in spinta (Dettaglio E)

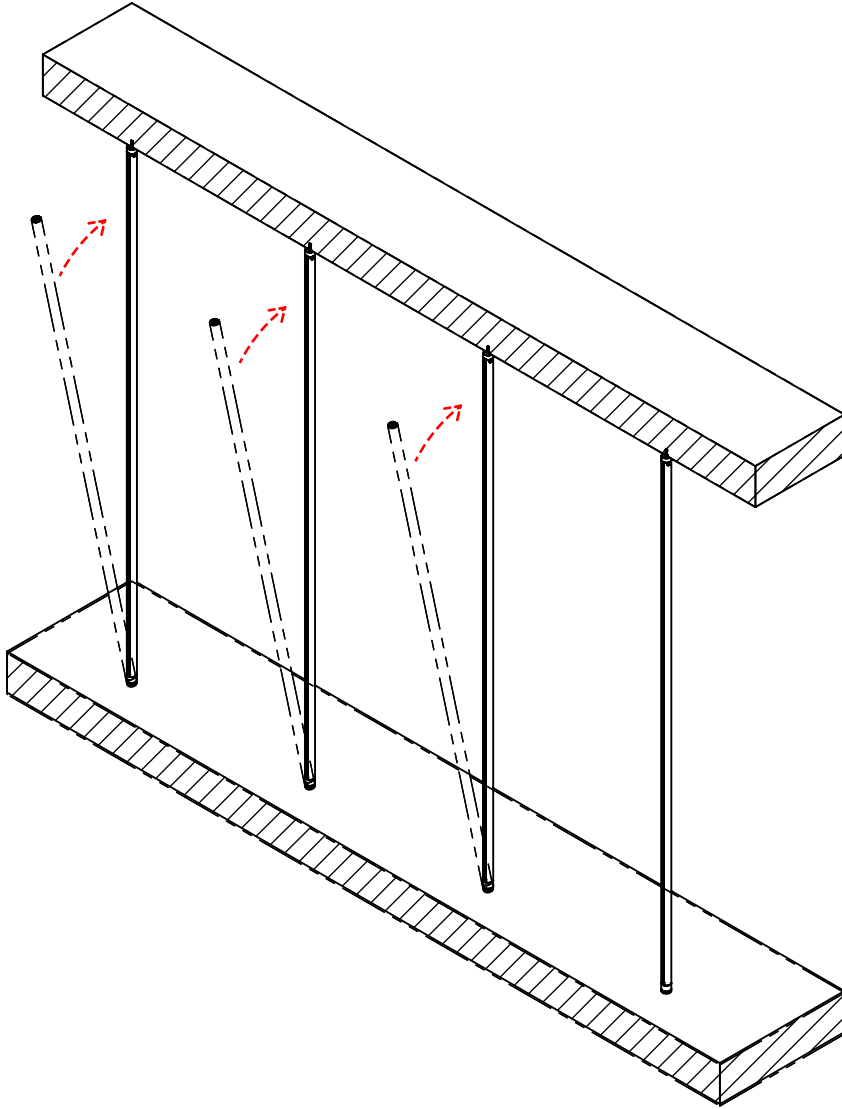
*Adjust the leg to push the upright and fix the final position (Dettaglio E)*



# CYCLOS

A - Istruzioni di montaggio montanti a soffitto  
A - Ceiling upright assembly instructions

10



Ripetere i punti A8 e A9  
per i rimanenti montanti  
*Repeat steps A8 and A9  
for the remaining uprights*