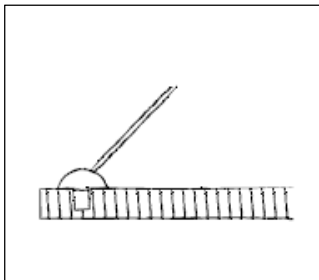


## kong – the range of measurements

### Solution for panel shelves



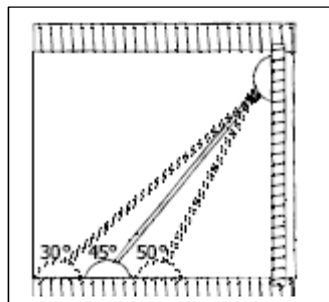
Length of the bar	Recommended panel depth min.
210 mm	200 mm
280 mm	250 mm
350 mm	300 mm

**Please note:** All measurements in this overview are rounded reference values. Regarding the individual design just the specific application and the used materials as well as their characteristics are decisive.

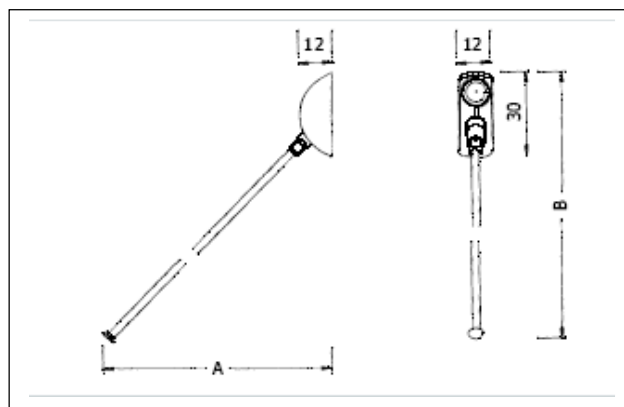


## kong – the range of measurements

### Carcase application



Diagonal tensioning  
from the back panel



### Length of the bar: 210 mm

Minimum panel depth (measurement A) Shelf suspension – inserted shelf suspension	Tensioning angle of the tension bar	Required shelf height (measurement B)
210 mm      220 mm	40°	122 mm
175 mm      185 mm	45° (recommended)	169 mm
170 mm      180 mm	50°	182 mm

### Length of the bar: 280 mm

Minimum panel depth (measurement A) Shelf suspension – inserted shelf suspension	Tensioning angle of the tension bar	Required shelf height (measurement B)
269 mm      279 mm	40°	157 mm
224 mm      234 mm	45° (recommended)	218 mm
212 mm      222 mm	50°	236 mm

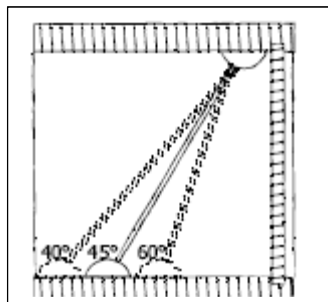
### Length of the bar: 350 mm

Minimum panel depth (measurement A) Shelf suspension – inserted shelf suspension	Tensioning angle of the tension bar	Required shelf height (measurement B)
329 mm      339 mm	40°	192 mm
272 mm      282 mm	45° (recommended)	267 mm
249 mm      259 mm	50°	289 mm

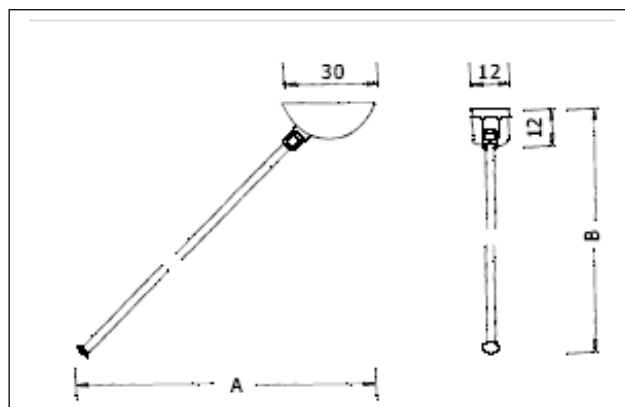


## kong – the range of measurements

### Carcase application



Diagonal tensioning  
from the top panel



### Length of the bar: 210 mm

Minimum panel depth (measurement A) Shelf suspension – inserted shelf suspension	Tensioning angle of the tension bar	Required shelf height (measurement B)
168 mm      178 mm	40°	145 mm
156 mm      166 mm	45° (recommended)	159 mm
108 mm      118 mm	60°	196 mm

### Length of the bar: 280 mm

Minimum panel depth (measurement A) Shelf suspension – inserted shelf suspension	Tensioning angle of the tension bar	Required shelf height (measurement B)
222 mm      232 mm	40°	190 mm
204 mm      214 mm	45° (recommended)	209 mm
143 mm      153 mm	60°	256 mm

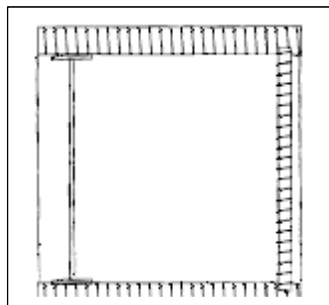
### Length of the bar: 350 mm

Minimum panel depth (measurement A) Shelf suspension – inserted shelf suspension	Tensioning angle of the tension bar	Required shelf height (measurement B)
275 mm      285 mm	40°	235 mm
254 mm      264 mm	45° (recommended)	259 mm
178 mm      188 mm	60°	316 mm

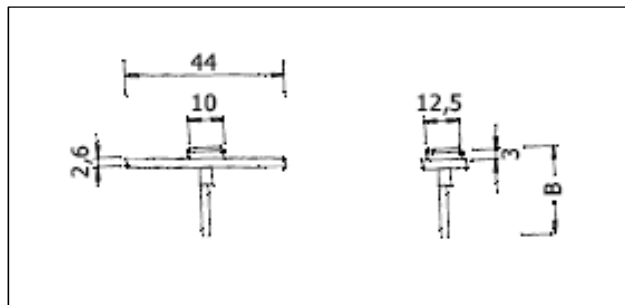


## kong – the range of measurements

### Carcase application



Vertical tensioning



Length of the bar	Required shelf height (measurement B)
210 mm	212 mm
280 mm	282 mm
350 mm	352 mm

