

ASSEMBLY INSTRUCTION

MINI-TONDO, MINI QUADRO

GENERAL COMMENTS

DIVIEMME SRL takes no responsibility for damages caused by inappropriate assembly, not obeying assembly instruction, technical modifications, using inappropriate components.

- Keep the instruction.
- Specifications are located on a characterized label.

READ BEFORE ASSEMBLY

- **Attention!** While assembly the lamp cannot be connected to the electricity.
- The fixture is compatible with 12VDC power source, made in 3rd protection class and marked with symbol
- For cleaning use only a soft, dry cloth, never use chemicals.

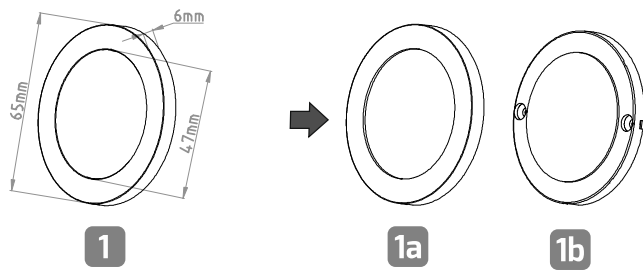
ASSEMBLY

The assembly should be made according to the picture instruction.



ENVIRONMENT PROTECTION:

- The product marked with an cross out trash can needs special treating with used electrical equipment.
- Products marked with this sign cannot be thrown away to the trash.
- Products with this sign can be dangerous to the environment, and they require special utilization and neutralization.
- Further product transfer to utilization works, helps to save the environment.
- More information about utilization and recycling can be received in the City Department or in the producer.



A

