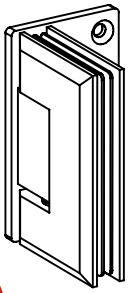
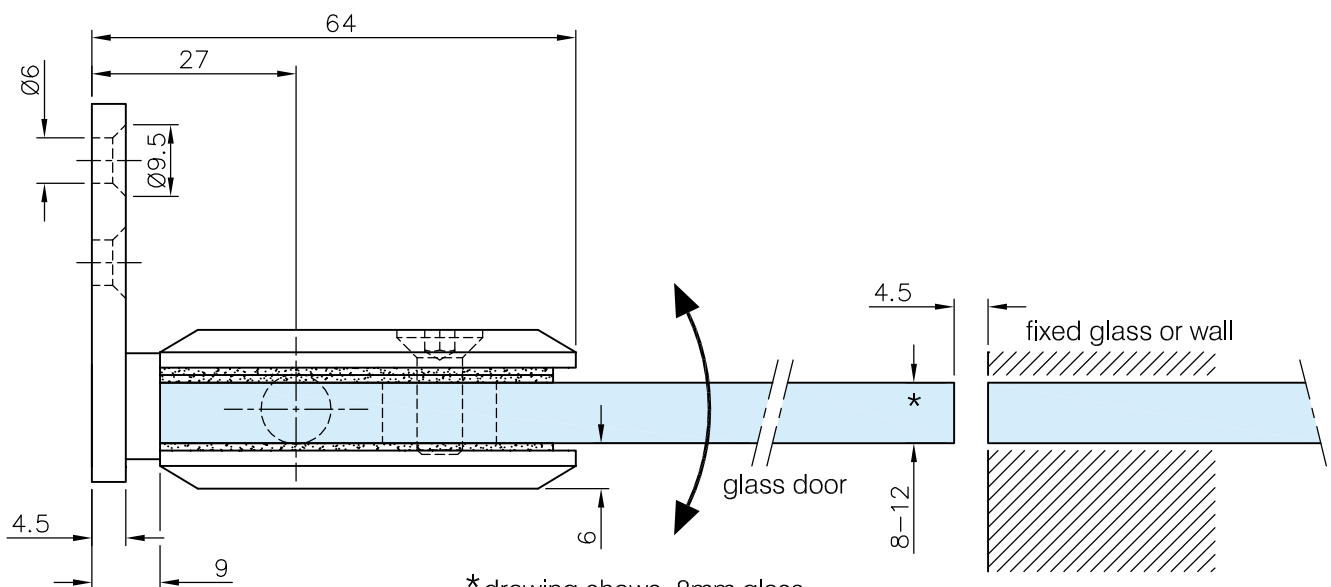
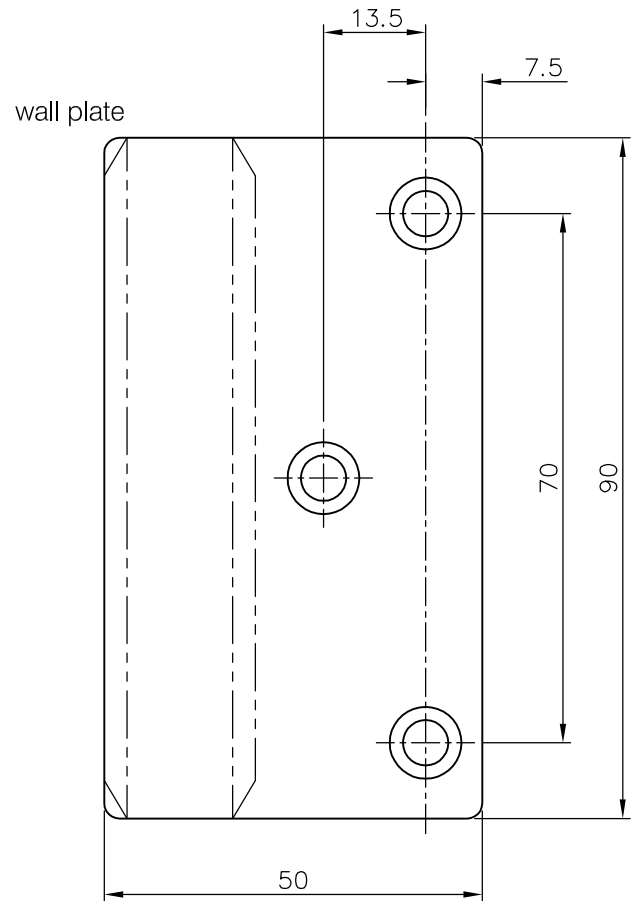
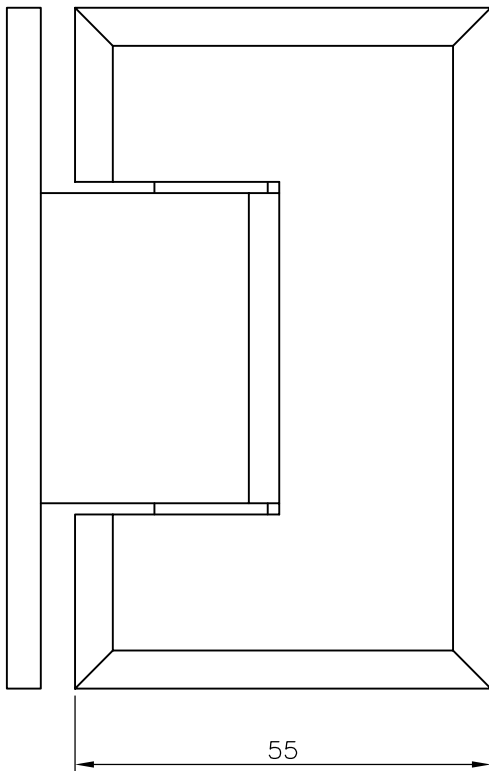


Glass door system

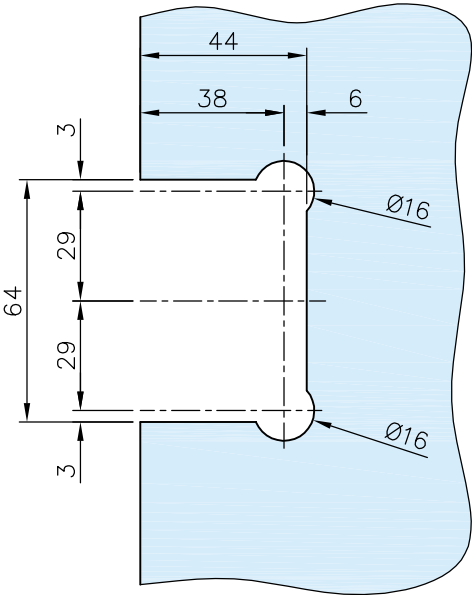


304

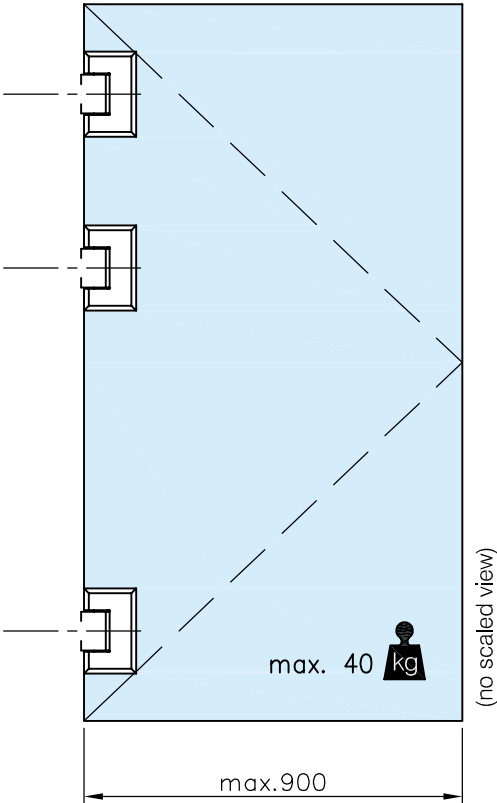
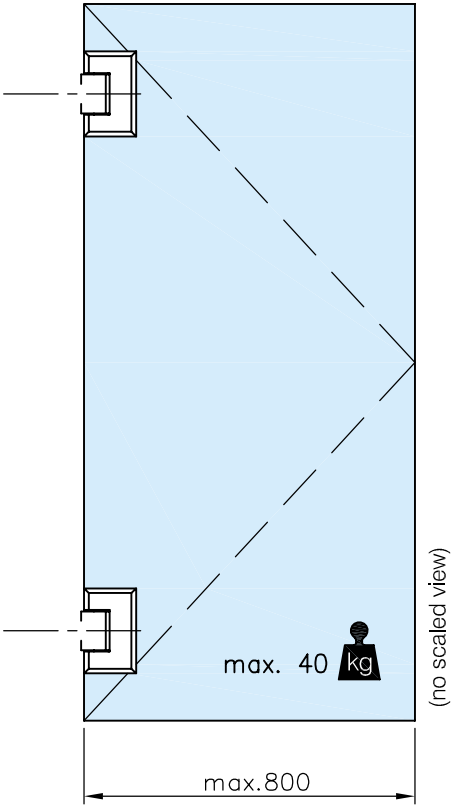


* drawing shows 8mm glass without PVC seals

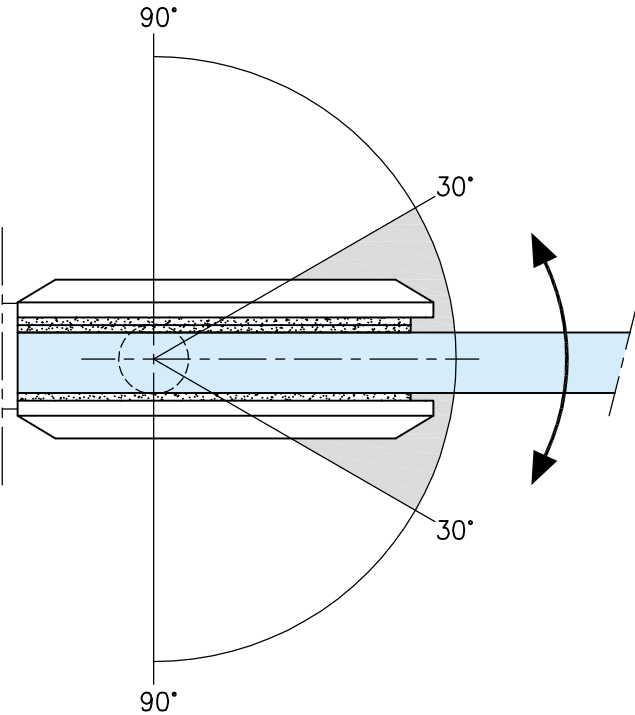
Glass door system



glass cutout



max. load weights and door width

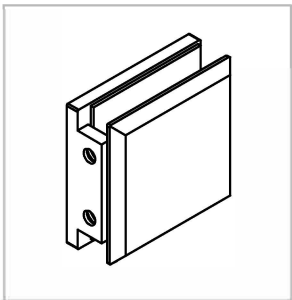


automatic closing action from 30°

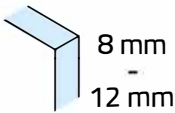
Technische Daten:
Winkelverbinder 90° - SONA

Datasheet:
Corner clamp 90° - SONA

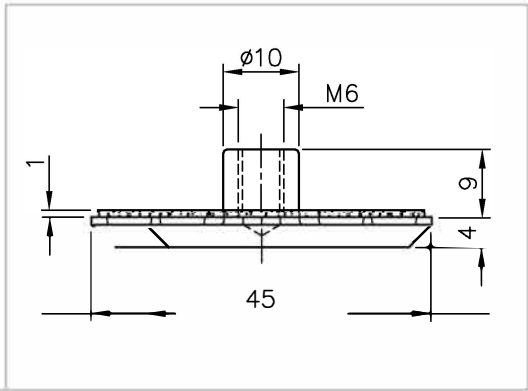
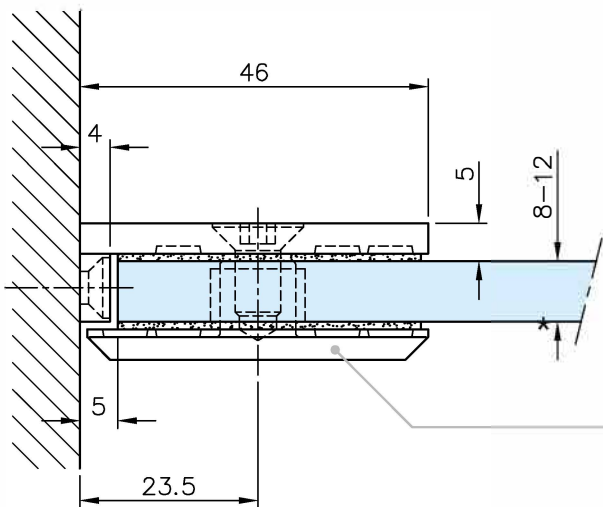
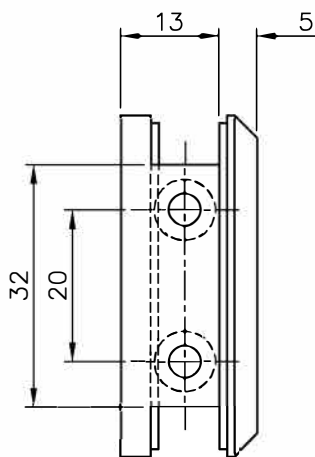
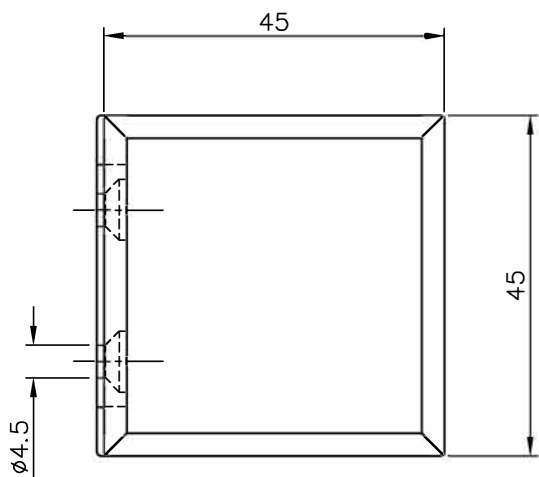
Art. 40.4115.090.10
Art. 40.4115.090.12
Art. 40.4115.090.26



Ausführung:
Options:

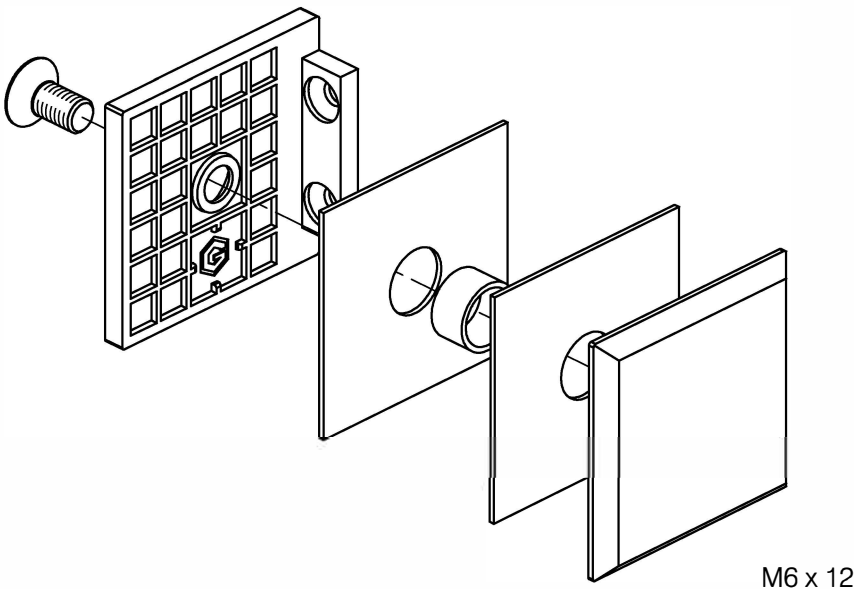


Material:	V2A	Gewicht: / Weight: 0,120 kg		
Material:	Stainless steel AISI 304			
Oberflächen:	Edelstahl-Design	Chrom-Design	Anthrazit-Design	
Finish:	Stainless steel design	Chrome design	Anthracite design	



*drawing shows 8mm glass

Art. 40.4115.090.10
Art. 40.4115.090.12
Art. 40.4115.090.26



Glasbearbeitung:
Glass preparation:

