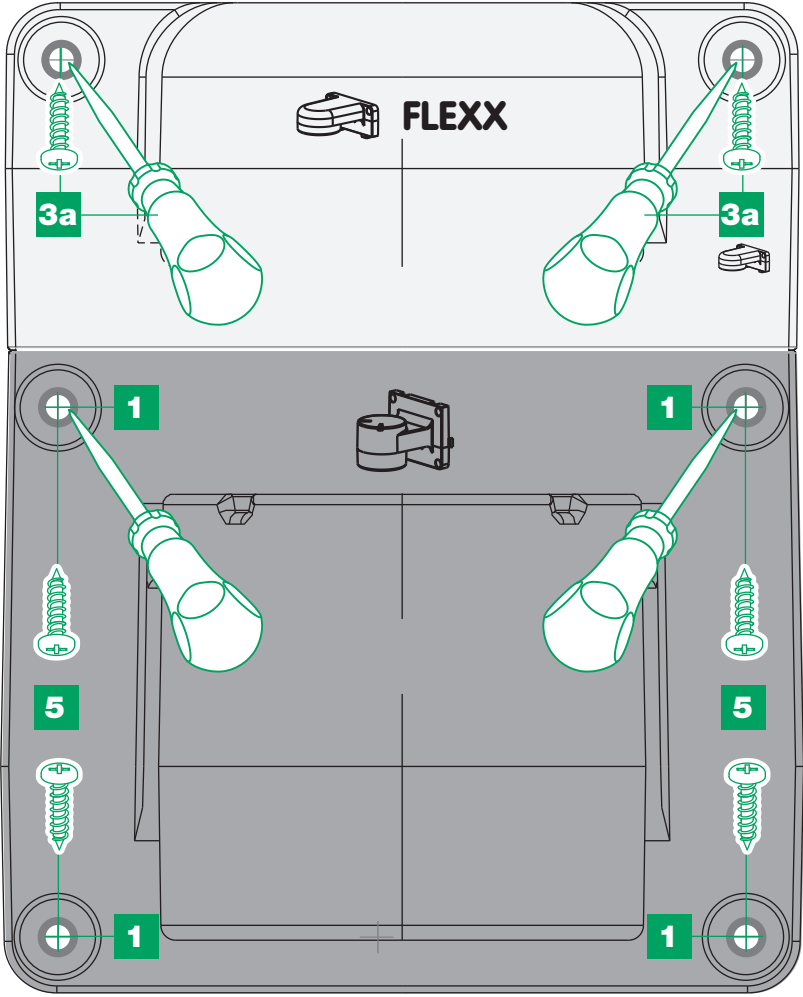


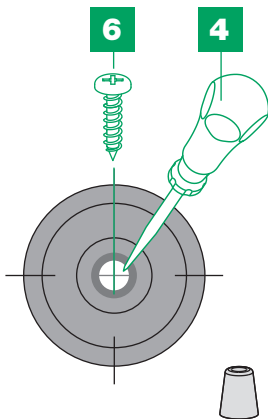
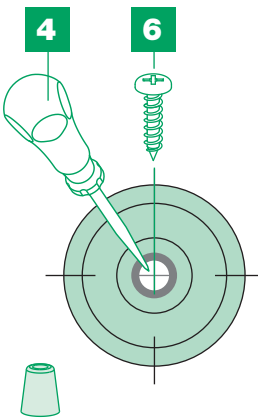
Montage-Anleitung und -Schablone  
Instructions et illustrations de montage  
Istruzioni e illustrazioni di montaggio

www.muellex.ch



Links / gauche / sinistra

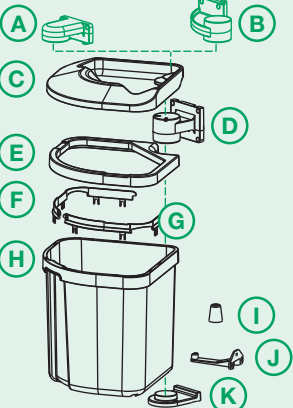
Rechts / droite / destra



Inhalt / Contenu  
Contenuto

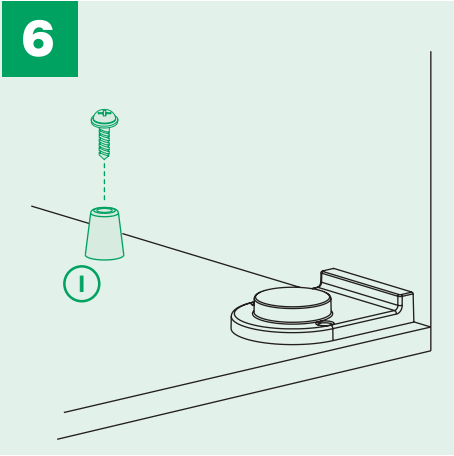
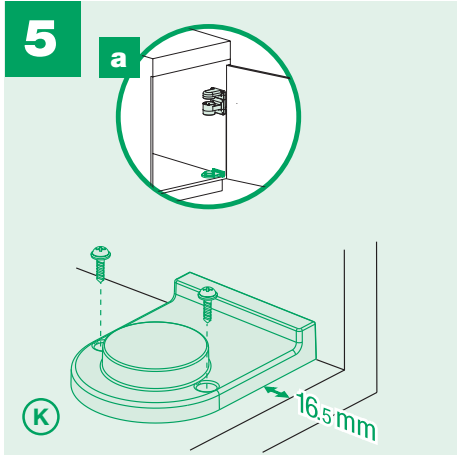
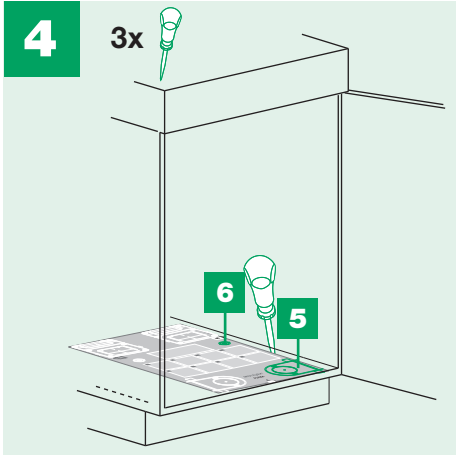
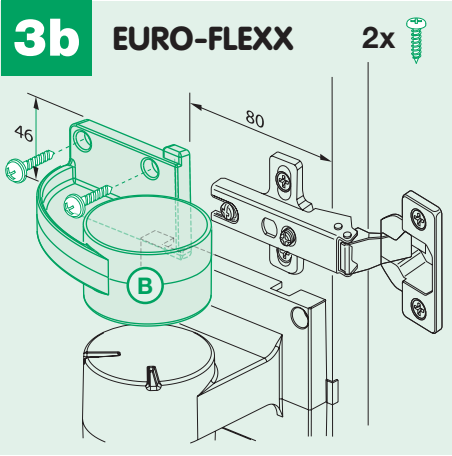
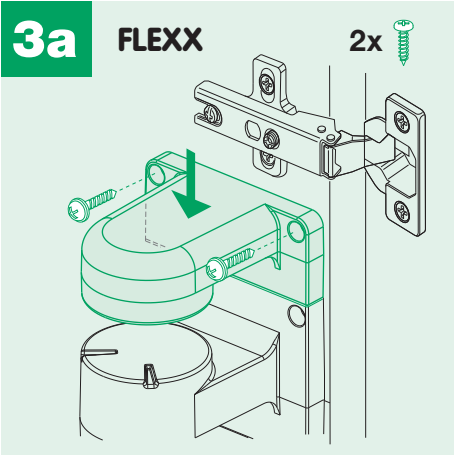
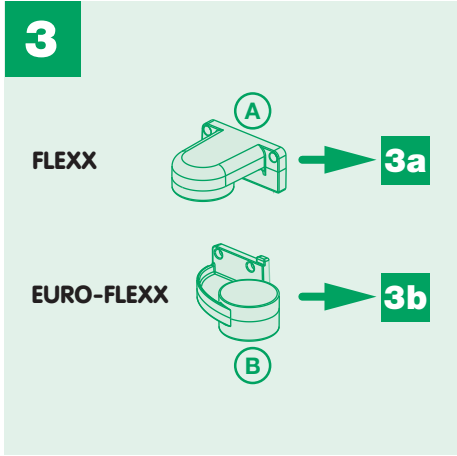
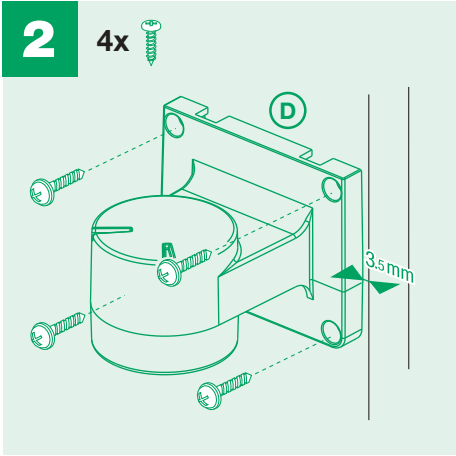
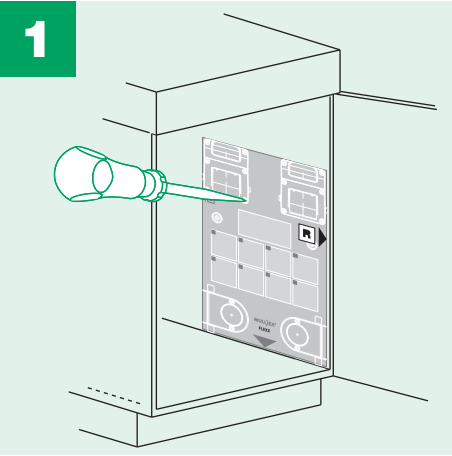
(EURO-) FLEXXBio

FLEXX EURO-FLEXX



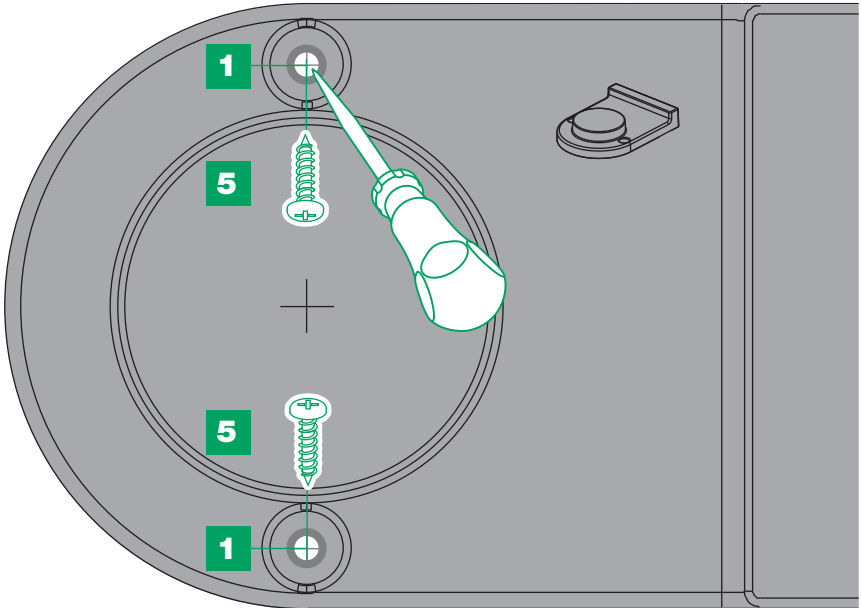
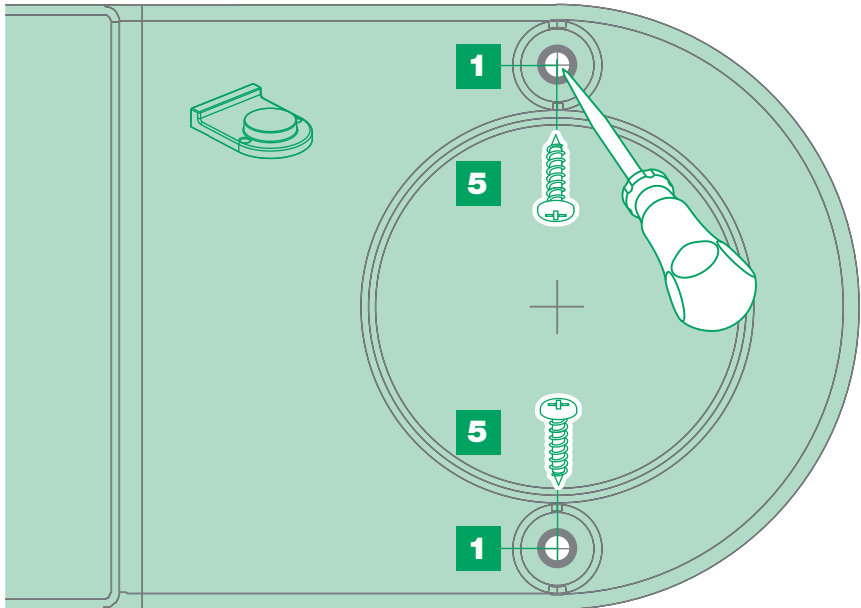
Ersatzteile / Pièces de rechange / Parti di ricambio

A	10140	Nur FLEXX / Seulement FLEXX / Solamente FLEXX:
B	10346	Halter oben (SMS) / Support au-dessus / Supporto superiore
C	10152	Nur EURO-FLEXX / Seulement EURO-FLEXX / Solamente EURO-FLEXX:
D	10139	Halter oben (EURO) / Support au-dessus / Supporto superiore
E	10145	Deckel / Couvercle / Coperchio
F	10147	Halter mitte / Support au-milieu / Supporto mediano
G	11146	Zierrahmen / Cadre décoration / Quadro decorativo
H	10166	Krone rechts / Couronne droite / Corona a destra
I	10150	Krone links / Couronne gauche / Corona a sinistra
J	10138	FLEXX Behälter 35-Liter / Récipient / Contenitore
K	4920.05	Puffer / Amortisseur / Tampone
L		Fanghaken / Crochet d'attraper / Gancio di presa
M		Halter unten / Support au-dessous / Supporto inferiore
N		Pan-Head 4 x 16 mm
O		Nur (EURO-) FLEXX-Bio / Seulement (EURO-) FLEXX-Bio / Solamente (EURO-) FLEXX-Bio:
P		Kompostbehälter / Seau compost / Contenitore per compost



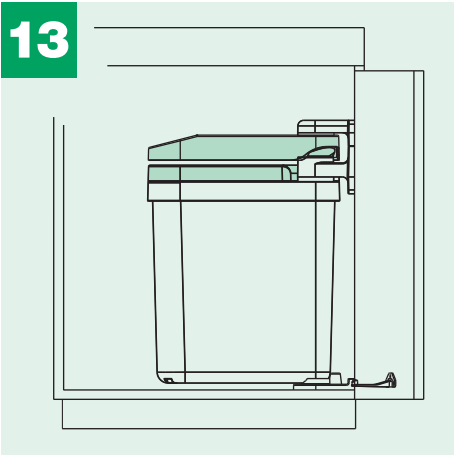
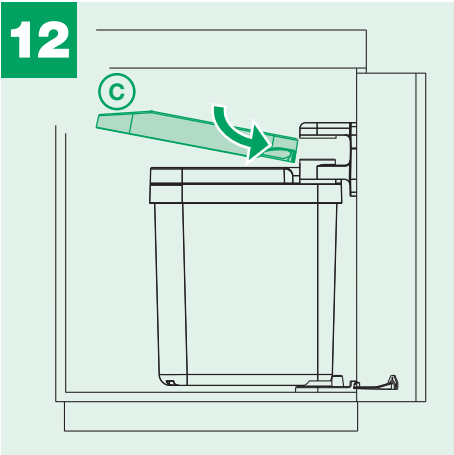
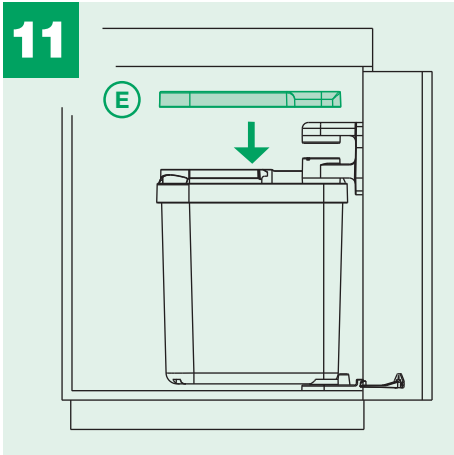
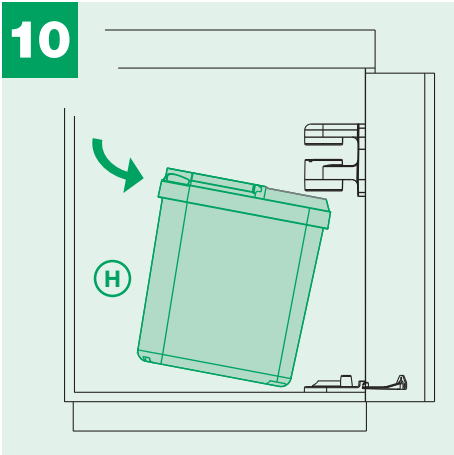
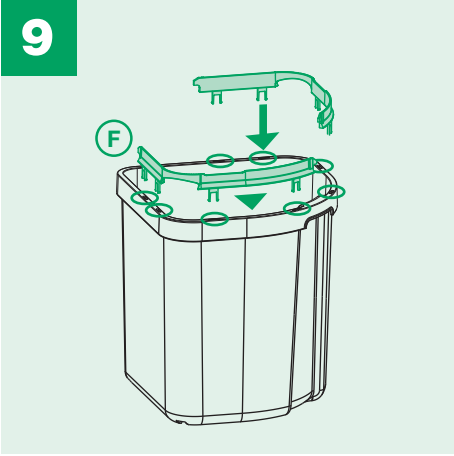
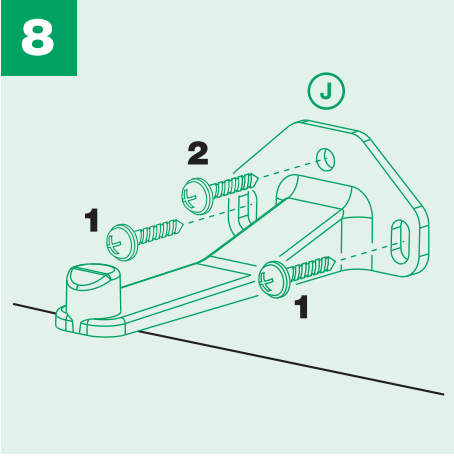
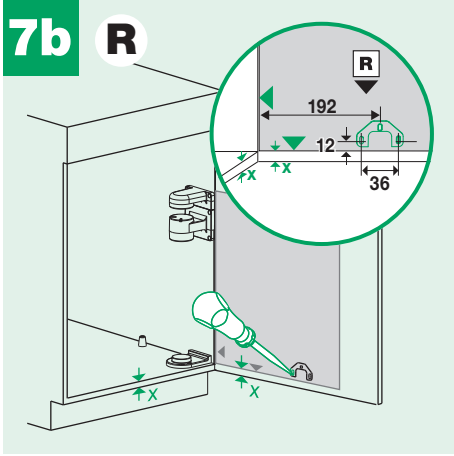
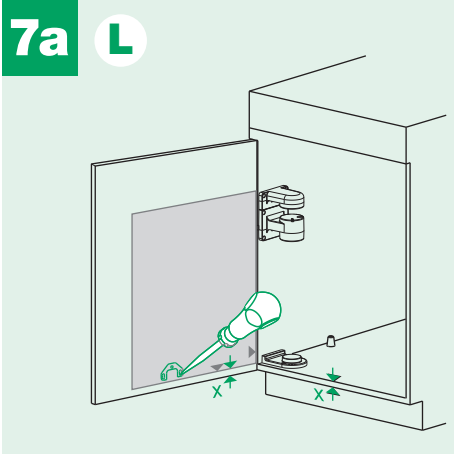
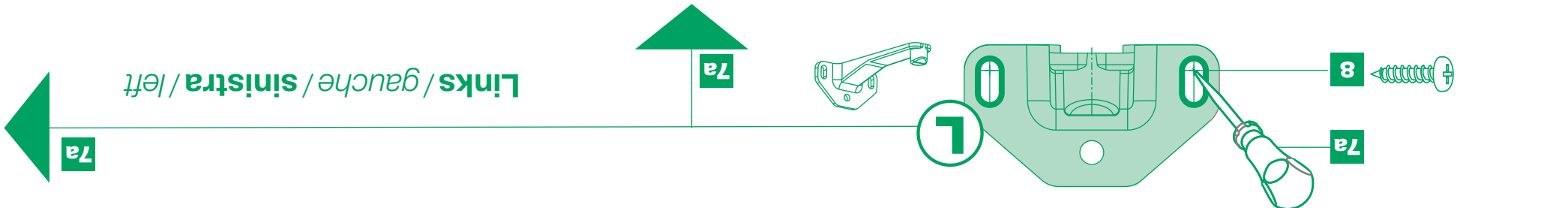
Links / gauche / sinistra

Rechts / droite / destra



Korpuskante links Partie gauche du corps Bordo sinistro dell'elemento

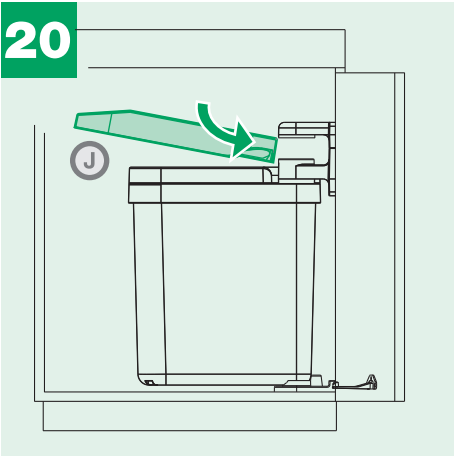
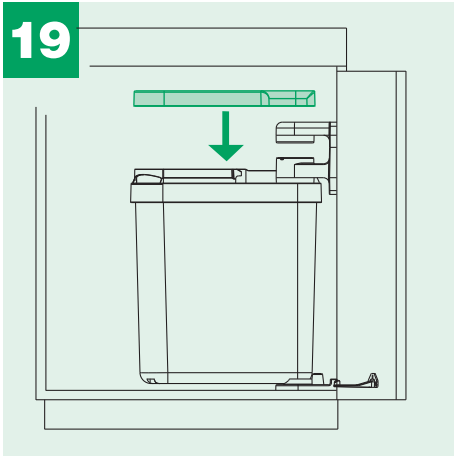
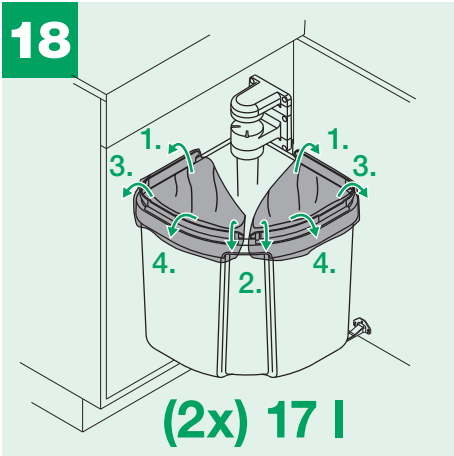
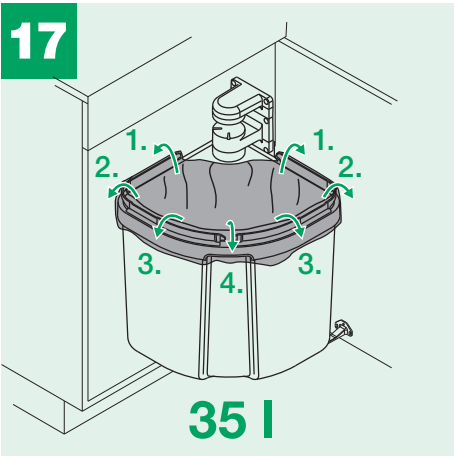
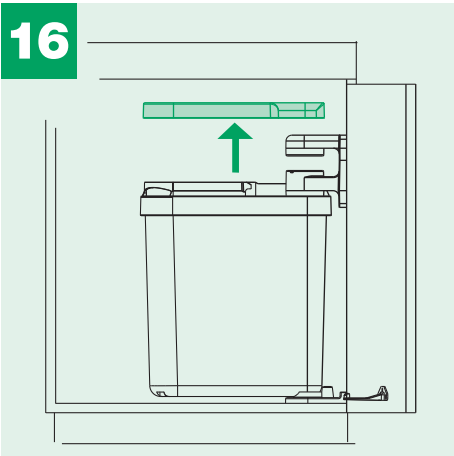
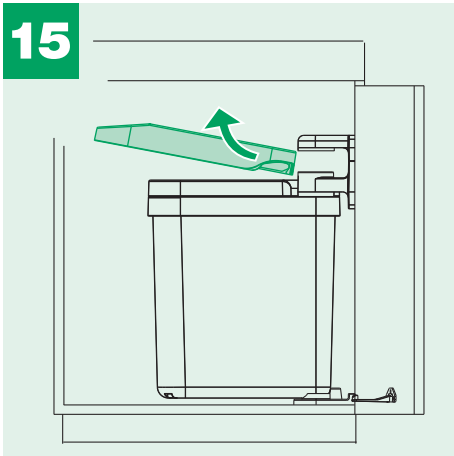
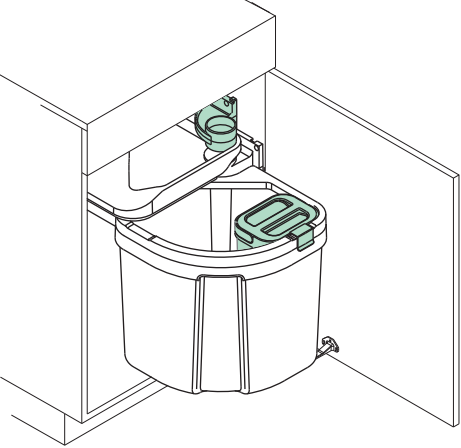
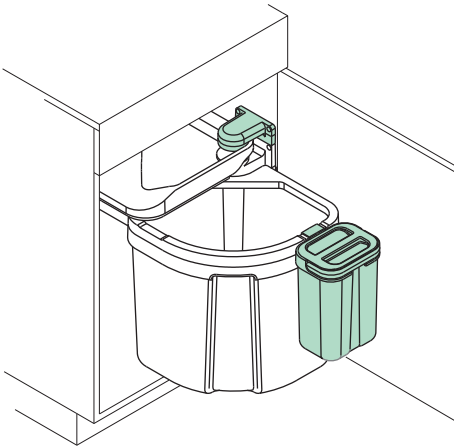
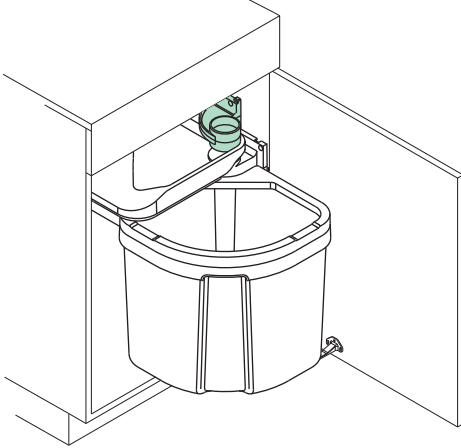
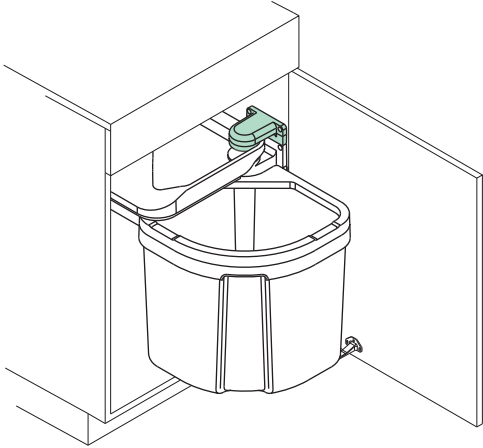
Korpuskante rechts Partie droite du corps Bordo destro dell'elemento



## FLEXX

## EURO-FLEXX

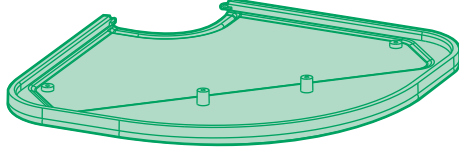
## FLEXX BIO / EURO-FLEXX BIO



Zubehör /  
Accessoire

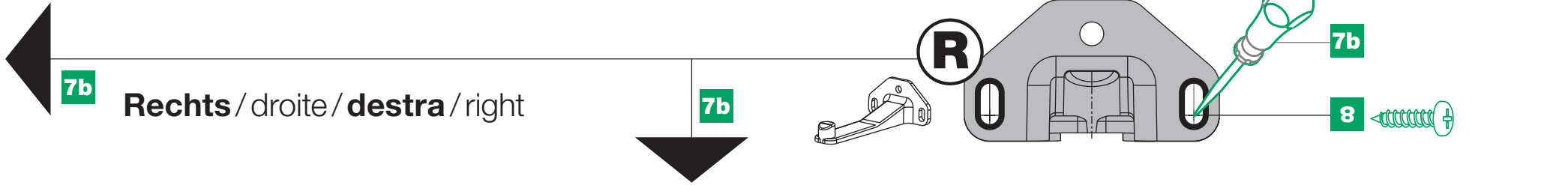
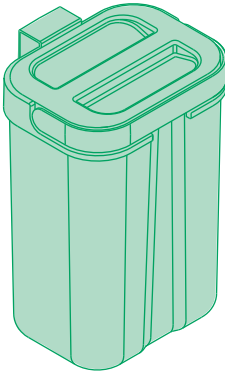
## FLEXXHermetic

Art.-Nr. 4916.01

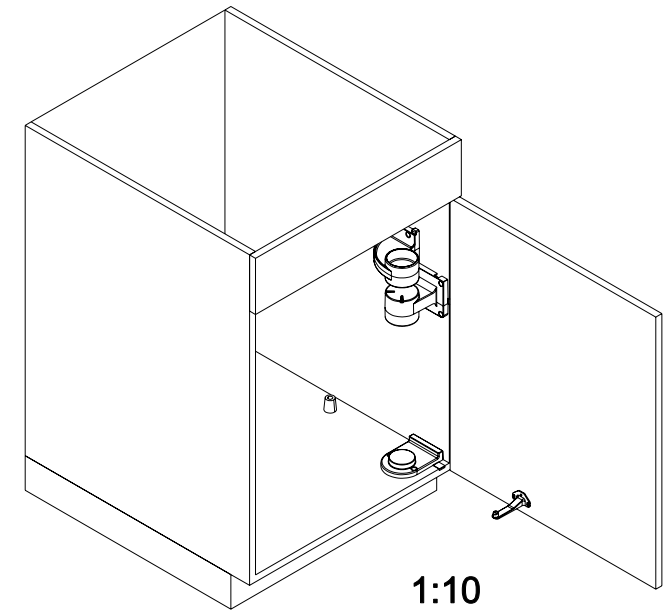
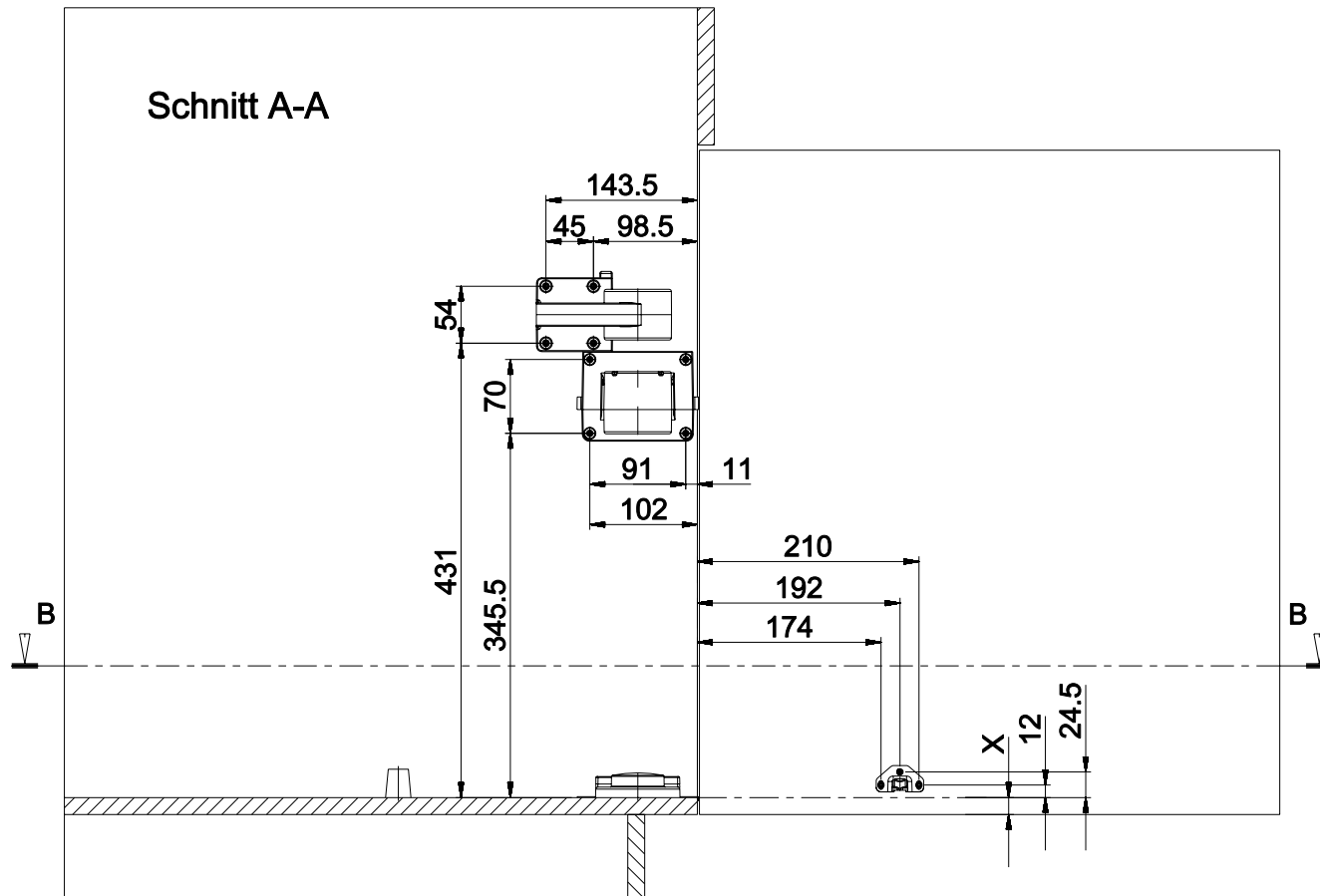


## FLEXXBio

Art.-Nr. 4920.05

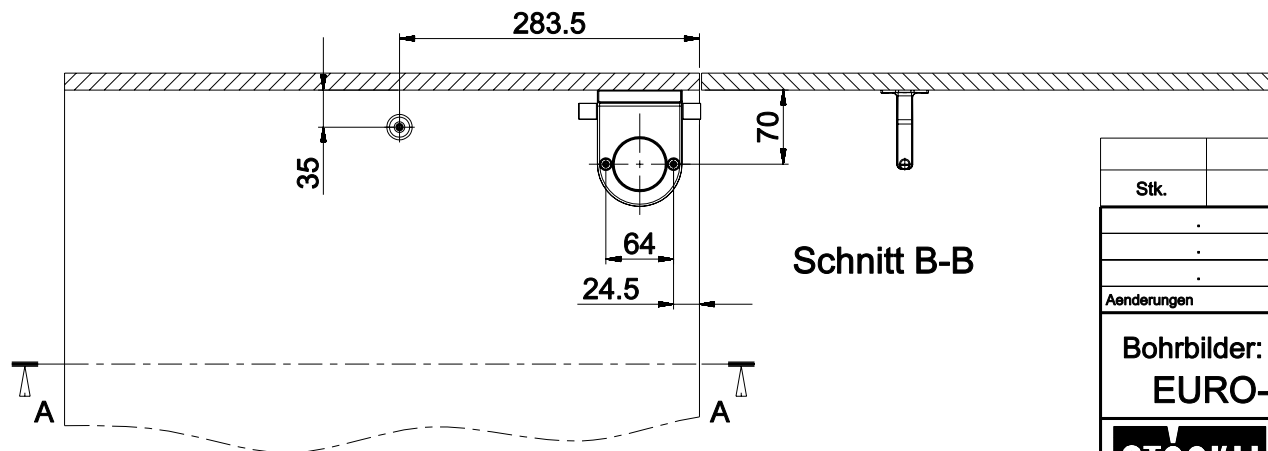


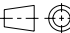

Schnitt A-A



Abgebildetes System rechtsgebandet  
Alle Masse ab Innenraum Unterschrank  
Masse Fanghaken sind für Holzstärke 16mm ausgelegt

Schnitt B-B



Stk.		Benennung				Pos.	Material		MODEL NAME			
.		.	.	.		.	.		A3		Werkzeug-Nr.	
.		.	.	.		.	.		Artikel-Nr.			
.		.	.	.		.	.					
Aenderungen		Datum	Name	Aenderungen		Datum	Name					
Bohrbilder: Front / Kastenboden / Seitenwand EURO-FLEXX / EURO-FLEXXBio								Massstab 1:5		Gezeichnet 15.06.2010 H. Forrer		
										Geprueft		
										Ersetzt durch:		
										Ersetz fuer:		
								A. & J. Stöckli AG CH-8754 Netstal		Zeichnungs-Nr.		Index

**STÖCKLI**

A. & J. Stöckli AG  
CH-8754 Netstal