

ISTRUZIONE DI MONTAGGIO

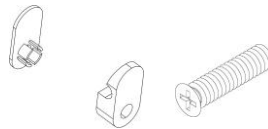
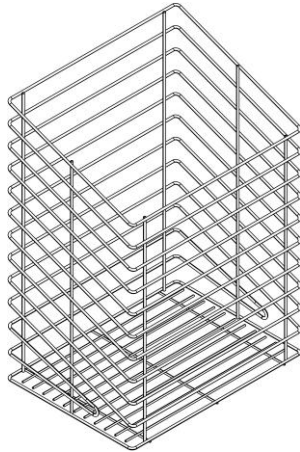
ARTICOLO IDONEO SOLO SU MOBILE CON ANTA A CERNIERA SU FONDO MOBILE

ASSEMBLY INSTRUCTION

ARTICLE SUITABLE ONLY WITH FALL-FRONT DOOR

INSTRUCTIONS D'INSTALLATION

L'ARTICLE NE CONVIENT QUE POUR LA PORTE ABATTANTE



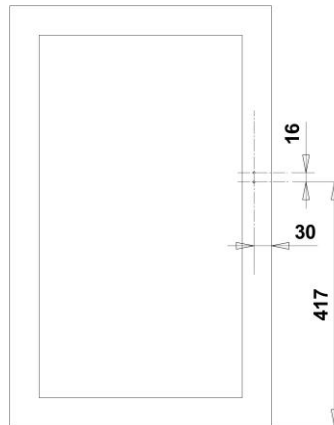
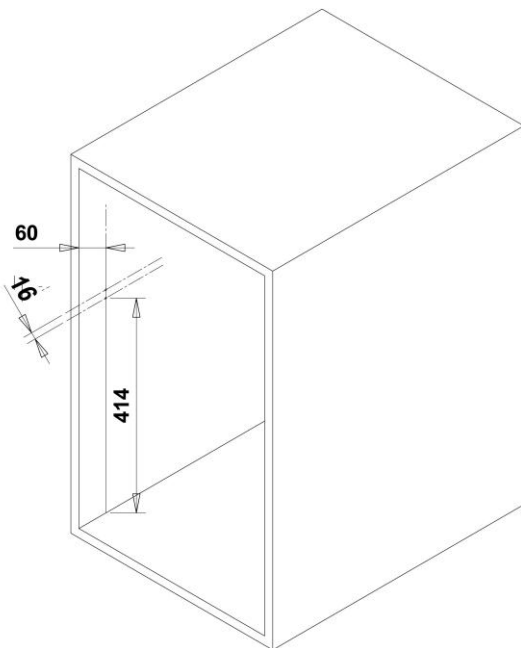
N°4 SET PLASTICHE+VITI
N°4 SET PLASTIC + SCREWS
N°4 KIT PLASTIQUE + VIS



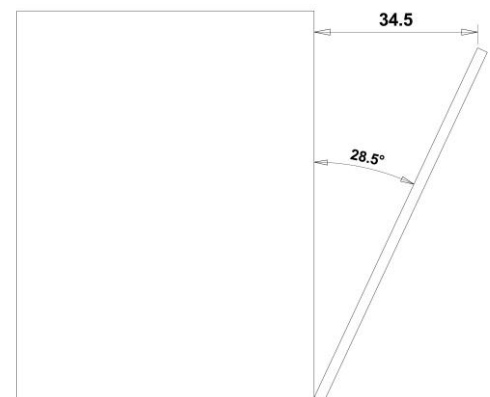
N°1 SNODO OPZIONALE
N°1 BRACKET OPZIONALE
N°1 PATTE OPZIONALE

N°1 CESTO
N°1 BASKET
N°1 PANIER

- PREFORATURA ANTINA PER SNODO. PREDRILLING DOOR FOR BRACKET. PRÉPERÇAGE DE PORTE POUR PATTE



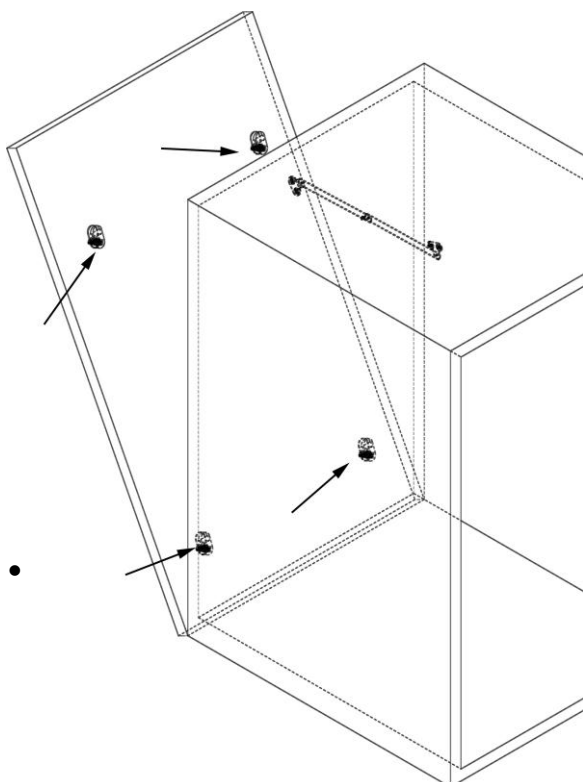
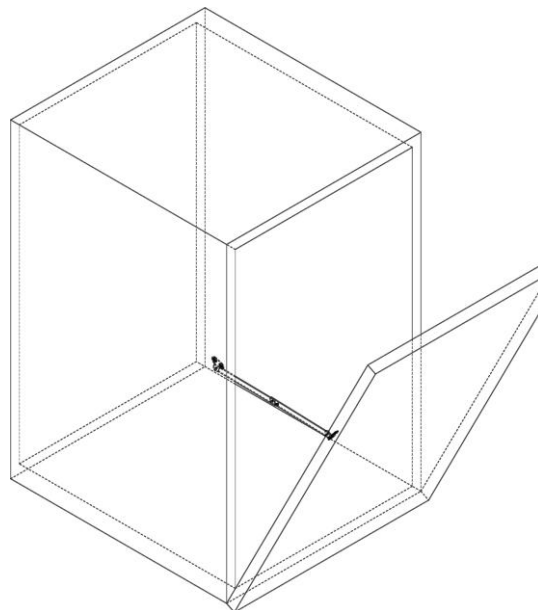
MAX APERTURA
MAX OPENING
MAX OUVERTURE



N.B.:Tutte le quote sono espresse in mm ed hanno tolleranza +/- 1 mm.

All data are in mm and the tolerance is +/- 1 mm.

- MONTAGGIO SNODO
- MOUNTING OF BRACKET
- MONTAGE DE SUPPORTS



- MONTAGGIO PARTICOLARI IN PLASTICA CON VITI
- ASSEMBLY OF PLASTIC SUPPORTS WITH SCREWS
- ASSEMBLAGE DE SUPPORTS EN PLASTIQUE AVEC LES VIS

- MONTAGGIO CESTO
- ASSEMBLY OF BASKET
- MONTAGE DU PANIER

