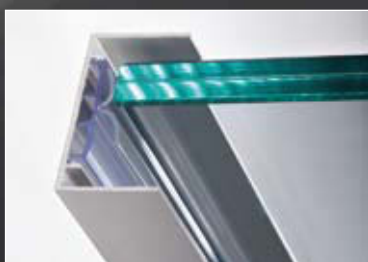


vitris robustus

Fittings system for sliding doors for 8 - 12,76 mm glass thickness



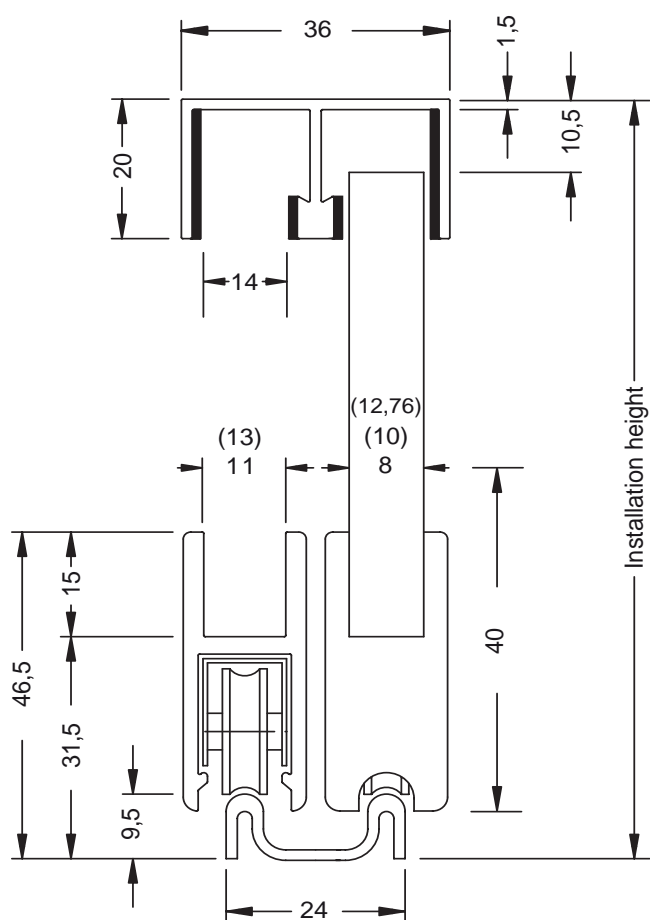
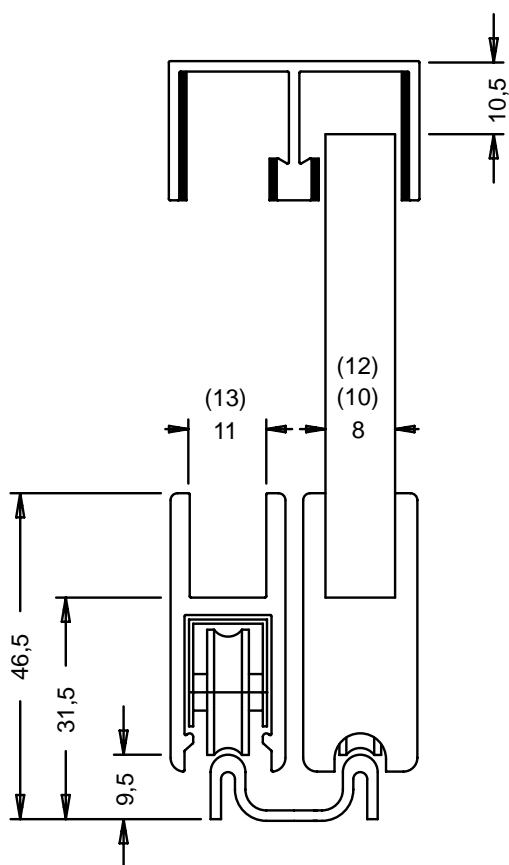
Robustus roller technology



Robustus frame profile



Finger pull handle, adapter and lock



Glass cutting dimensions:
installation height ./ 42

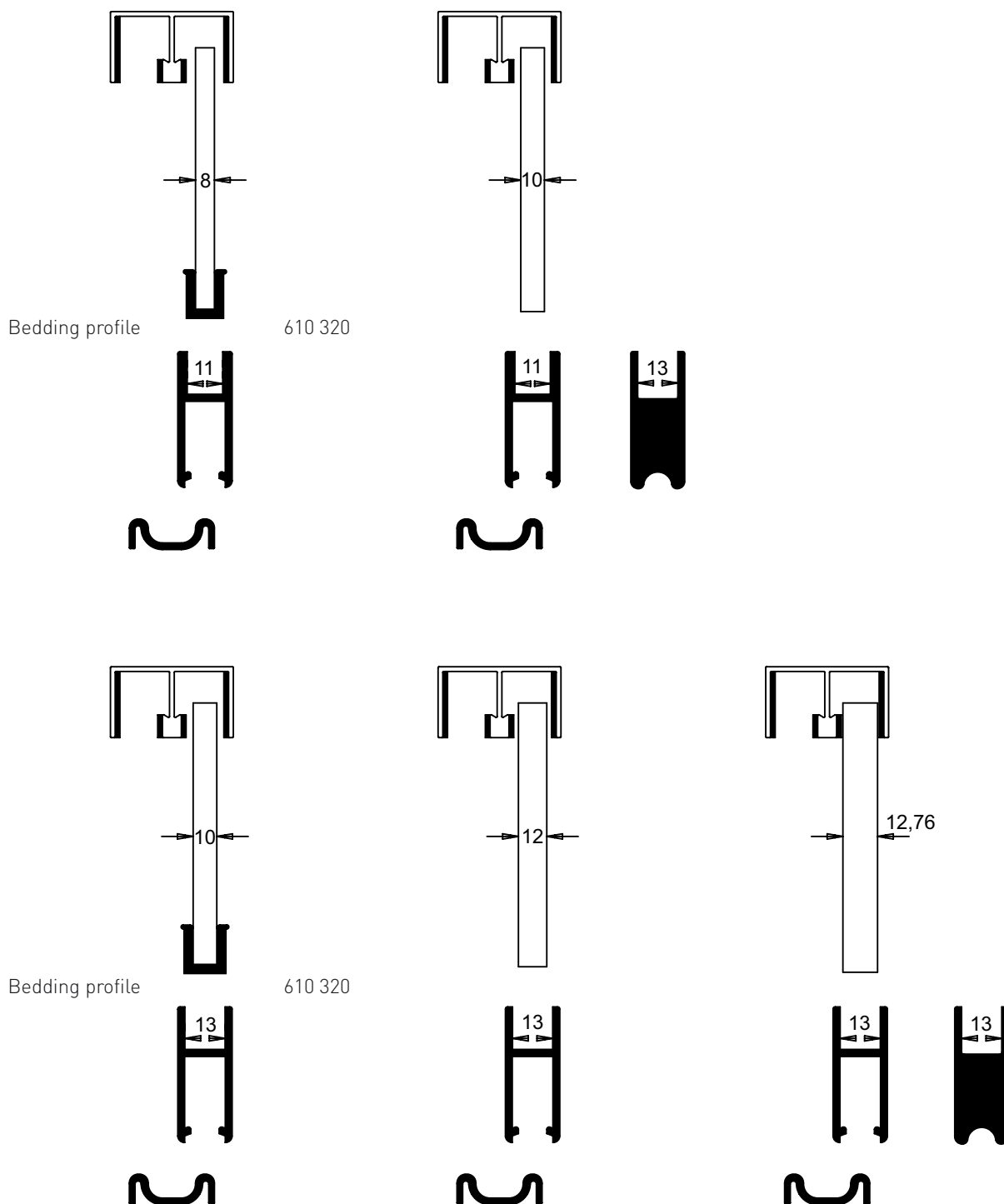
(bedding material
not included)

Maximum load
for 2 roller assemblies approx. 70 kg
for 4 roller assemblies approx. 140 kg



robustus fittings up to 12.76 mm glass thickness

	Designation	Article number	Specification
	Top twin-guide flocked protected by foil Length: 5 metres	610 020.5000.110	AL E 6 / EV 1 natural
		.120	AL E 1 / C 31 alinox (stainless steel effect)
	Roller profile for 8 - 10 mm glass thickness protected by foil Length: 5 metres	610 030.5000.110	AL E 6 / EV 1 natural
		.120	AL E 1 / C 31 alinox (stainless steel effect)
	Roller profile for 10 - 12.76 mm glass thickness protected by foil Length: 5 metres	610 040.5000.110	AL E 6 / EV 1 natural
		.120	AL E 1 / C 31 alinox (stainless steel effect)
	Roller assembly with steel ball bearing roller plastic covered Quantity: 20	610 050.0000.440	Galvanised spring steel housing
	End plate notched Quantity: 20	610 070.0000.610	Plastic natural aluminium
		.620	Plastic alinox (stainless steel effect)
	Twin bottom track Length: 5 metres	610 090.5000.110	AL E 6 / EV 1 natural
		.120	AL E 6 / C 31 alinox (stainless steel effect)



Reduced stock: same top twin-guide, same twin bottom tracks, same roller assembly, same end plates, same lock integrated in roller profile for glass thickness 8, 10, 12 and 12.76 mm.



robustus fittings / accessories

	Designation	Article number	Specification
	Bedding profile for 8 mm glass thickness / roller profile with 11 mm glass groove width or for 10 mm glass thickness / roller profile with 13 mm glass groove width in 20-metre rolls	610 320.0000.305	Plastic transparent
	Brush draught excluder clips Length: 5 metres Quantity: 10 metres for 8 mm glass thickness for 10 mm glass thickness	610 368.5000.110	AL E 6 / EV 1 natural
		610 370.5000.110	AL E 6 / EV 1 natural
	Frame profile protected by foil Length: 5 metres	610 110.5000.110	AL E 6 / EV 1 natural
		.120	AL E 1 / C 31 alinox (stainless steel effect)
	Dust protection and damper profile for frame profile Length: 5 metres	606 120.5000.305	Plastic transparent

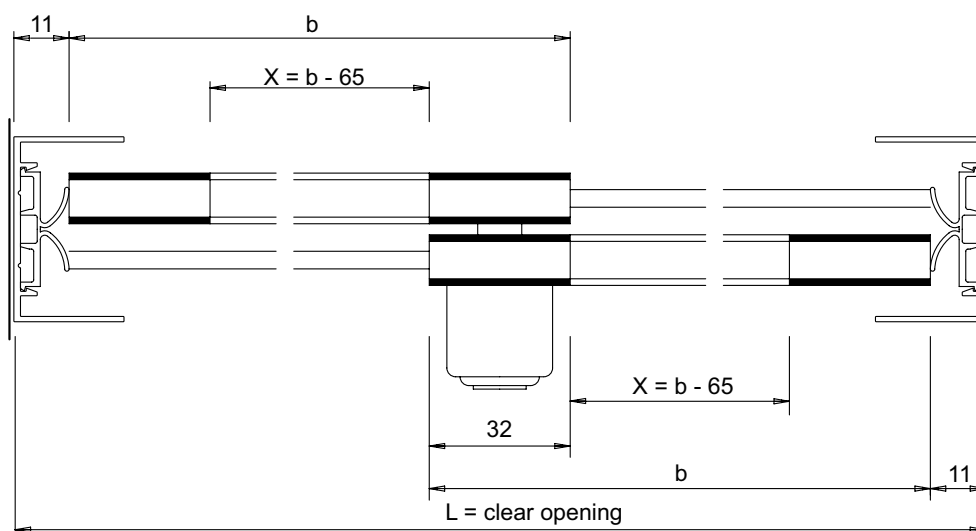
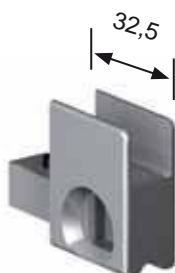
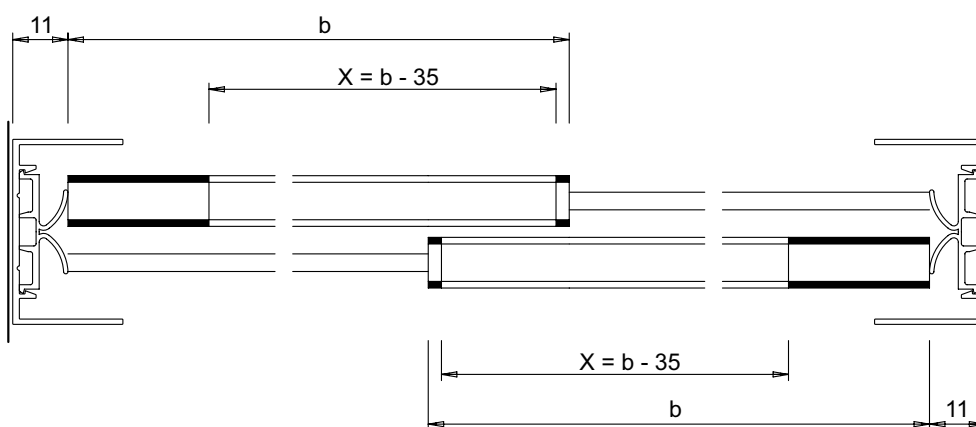
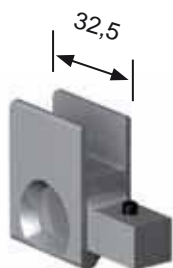
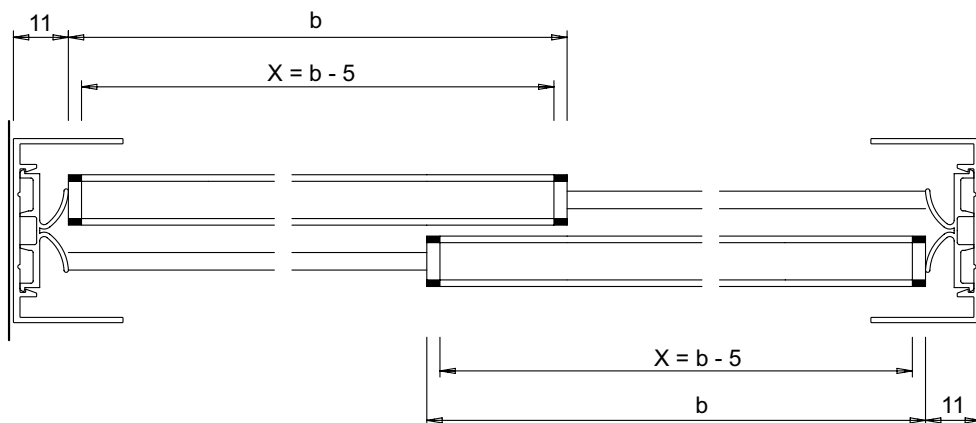
Arrangement of damping device /
anti-theft device (No. 610 420.0000.305)
in the Robustus top twin-guide up to
12 mm glass thickness.





robustus fittings / accessories





	Designation	Article number	Specification
	Mounting tool for roller assembly	610 400.0000.000	Stainless steel
	Damping device and anti-theft device up to 12 mm glass thickness for top twin-guide No. 610 020 Quantity: 20	610 420.0000.305	Plastic transparent
	Finger pull handle up to 12.76 mm glass thickness for right and left hand use Quantity: 2	610 450.0000.610	Zinc natural aluminium
		.620	Zinc alinox (stainless steel effect)



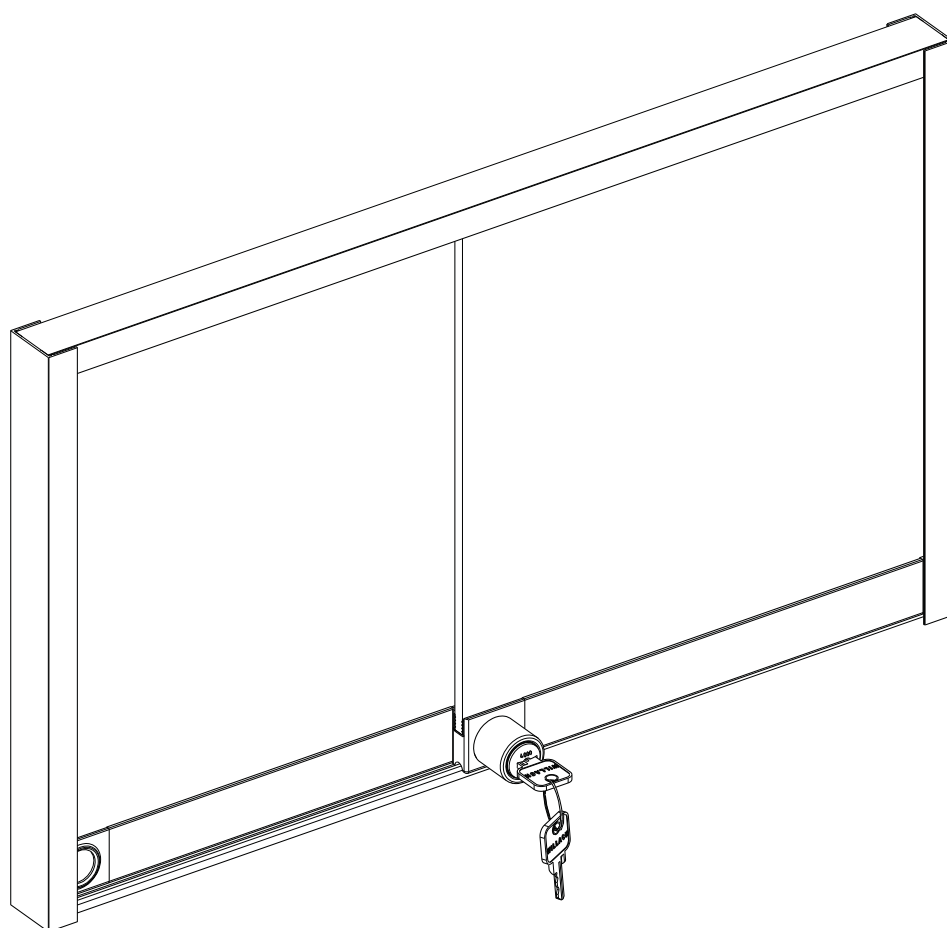
Overlap: 32 mm
 If L = clear opening is an odd number,
 then round down to the nearest even number.
 X = length of roller profile
 b = width of sash / glass width

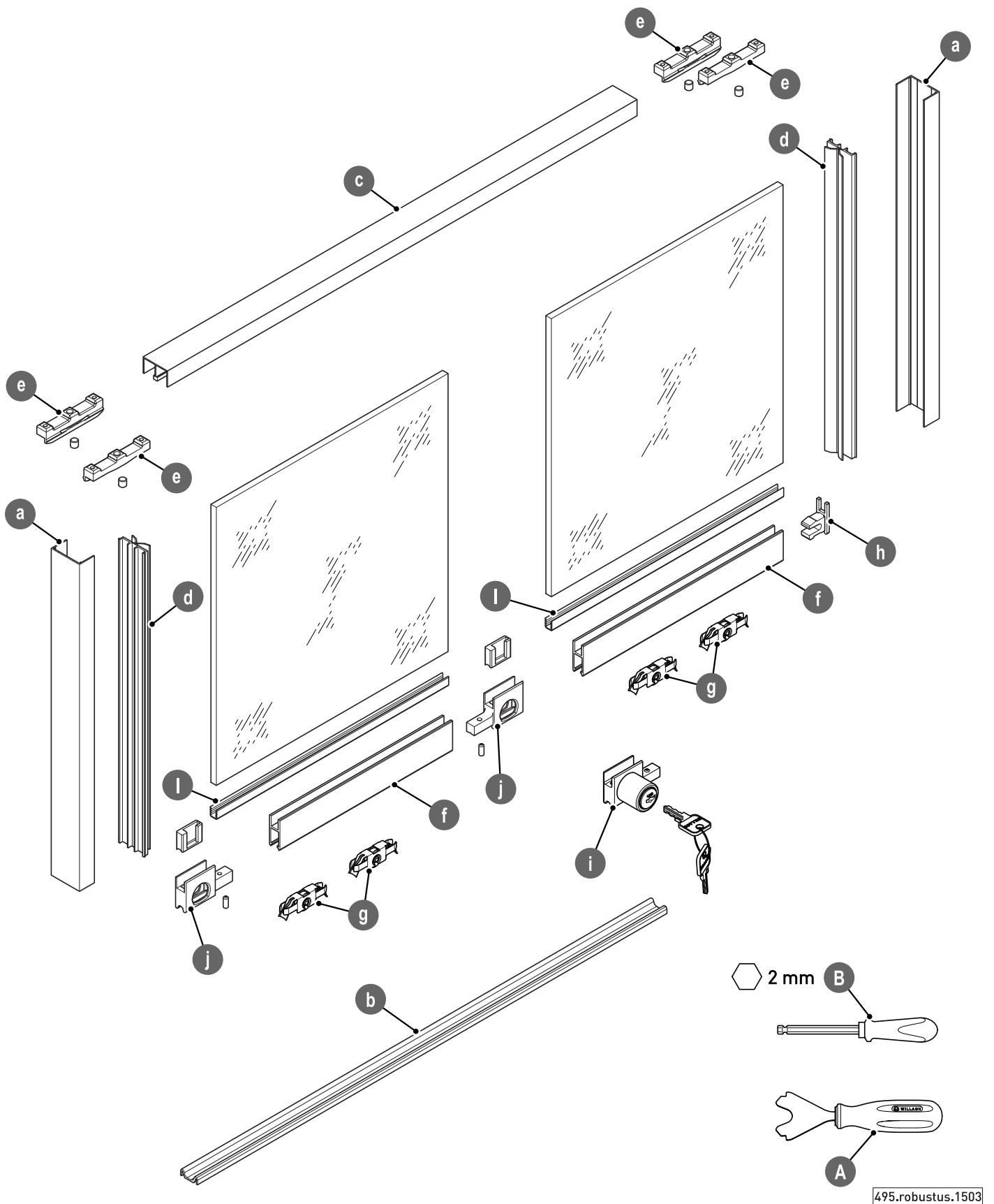


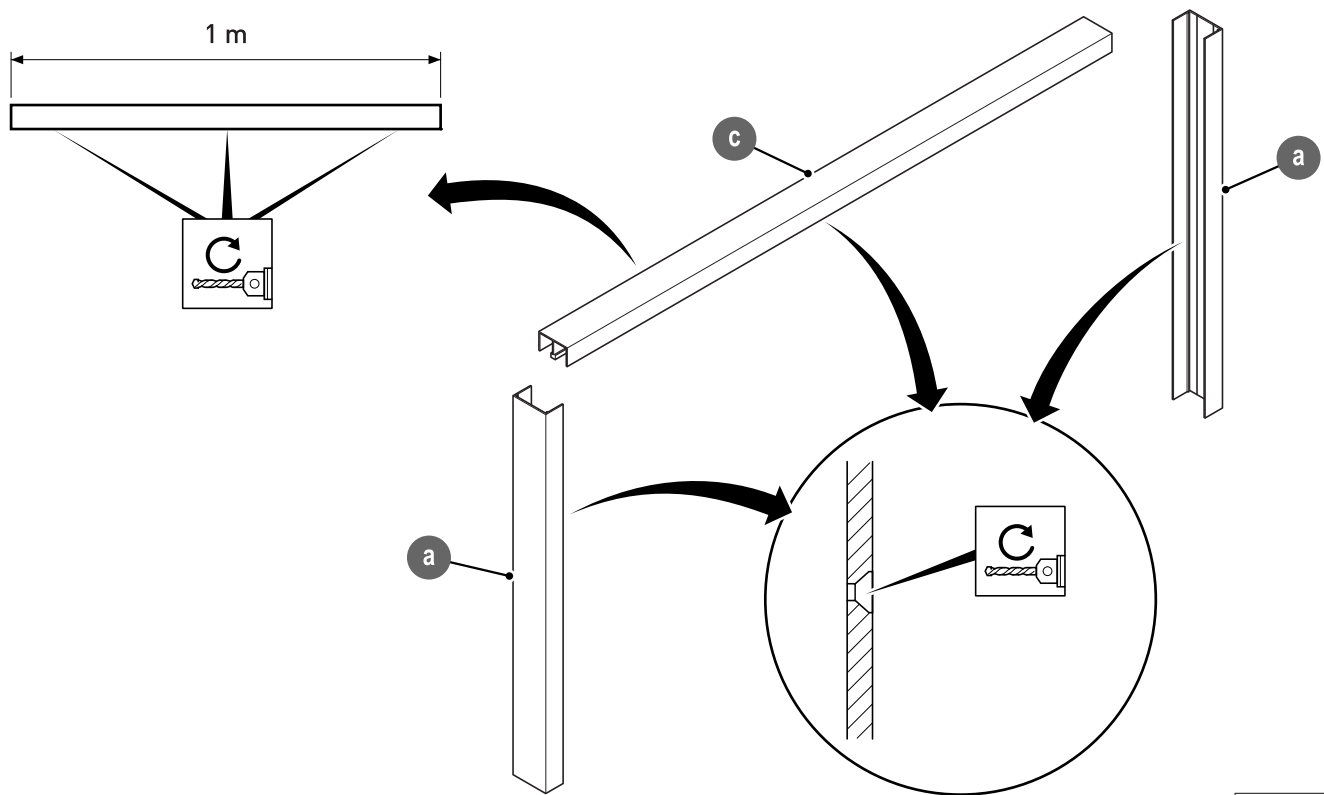
robustus fittings / accessories

	Designation	Article number	Specification
	SECURA Adapter up to 12.76 mm glass thickness for right and left hand use Quantity: 2	610 600.0000.610	Zinc white aluminium
		.620	Zinc alinox
	SECURA High security cylinder lock up to 12.76 mm glass thickness for right and left hand use Quantity: 2	610 620.0002.610	Zinc white aluminium
		.620	Zinc alinox
	SECURA Cylinder core interchangeable with 2 keys to pass to differ	606 630.0000.415	Zinc nickel-plated
		606 631.0000.415	Zinc nickel-plated
	SECURA Dismantling key	606 640.0000.415	Zinc nickel-plated

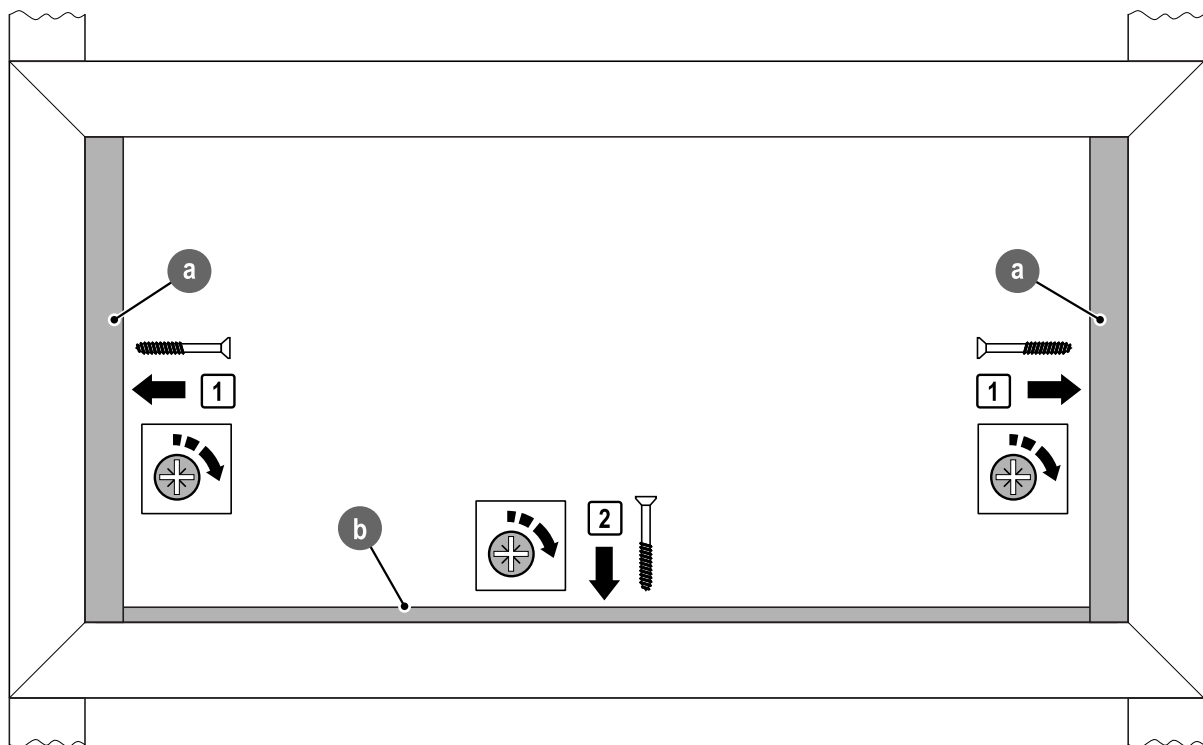
Vitris Robustus 1.0.0



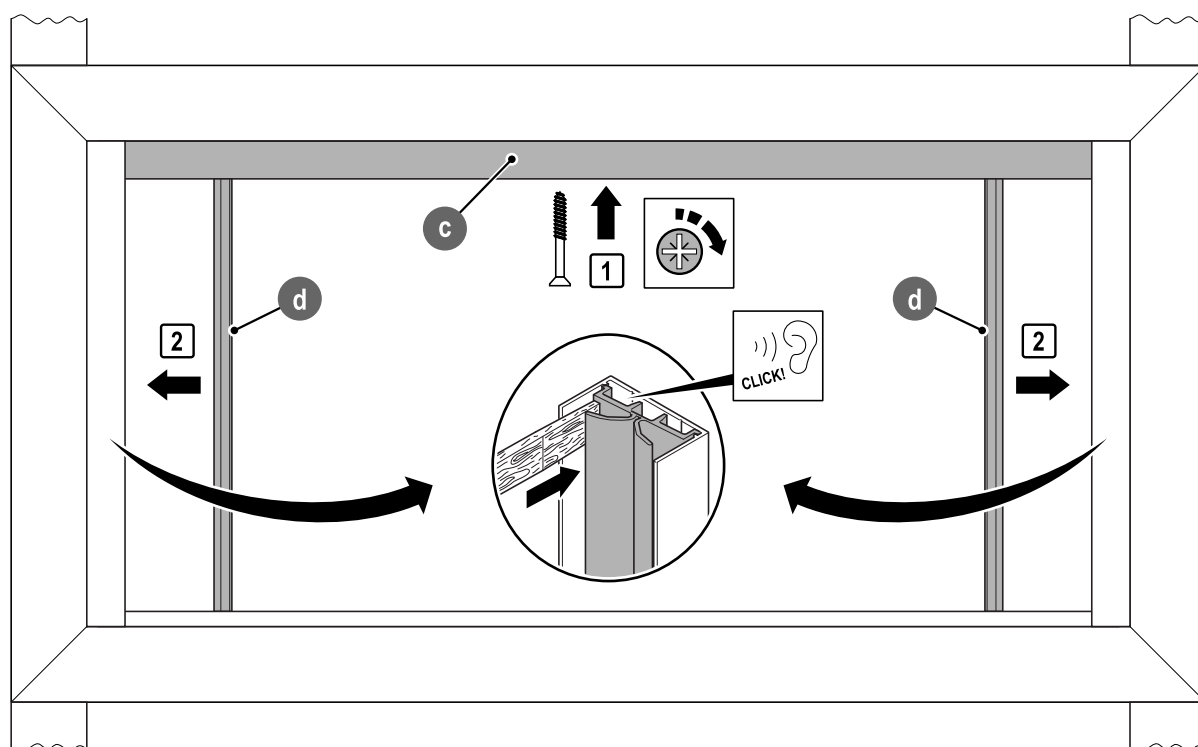




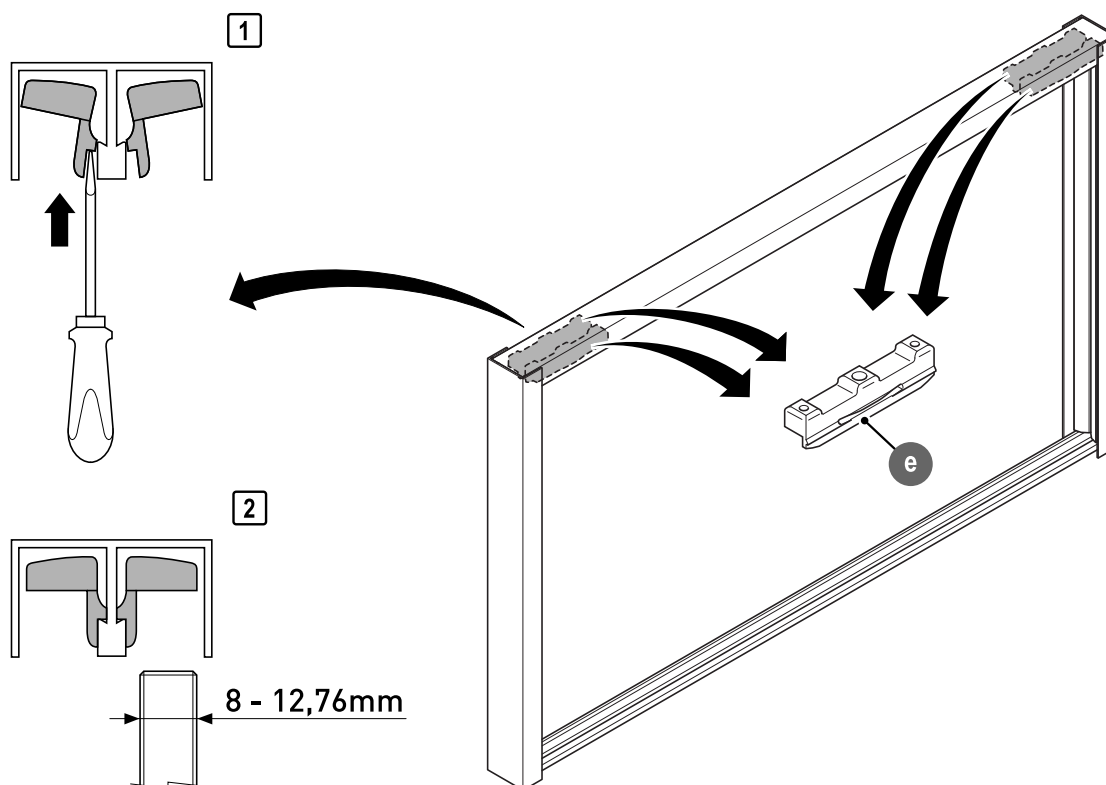
1112.supra.002



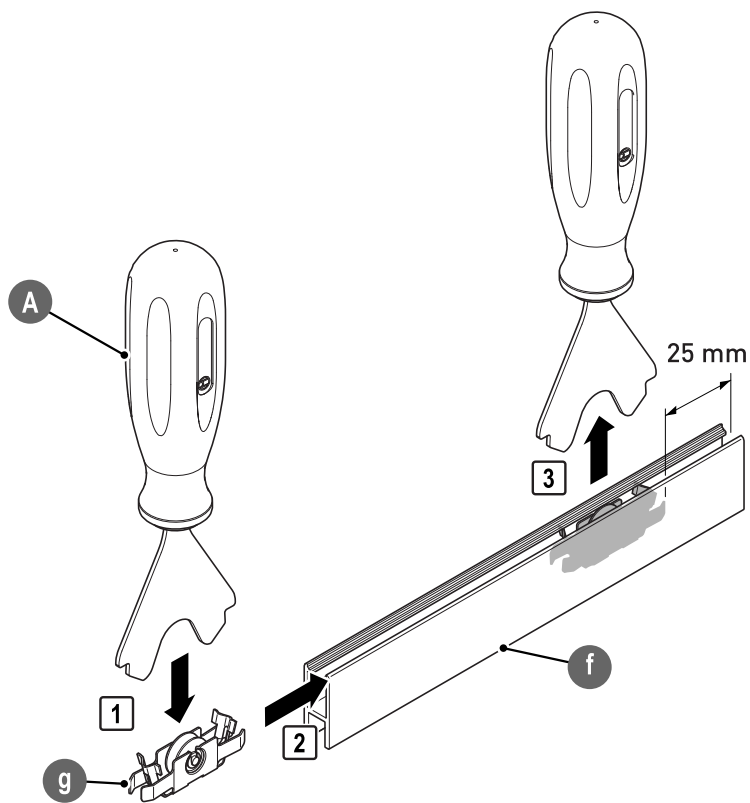
496.robustus.1503



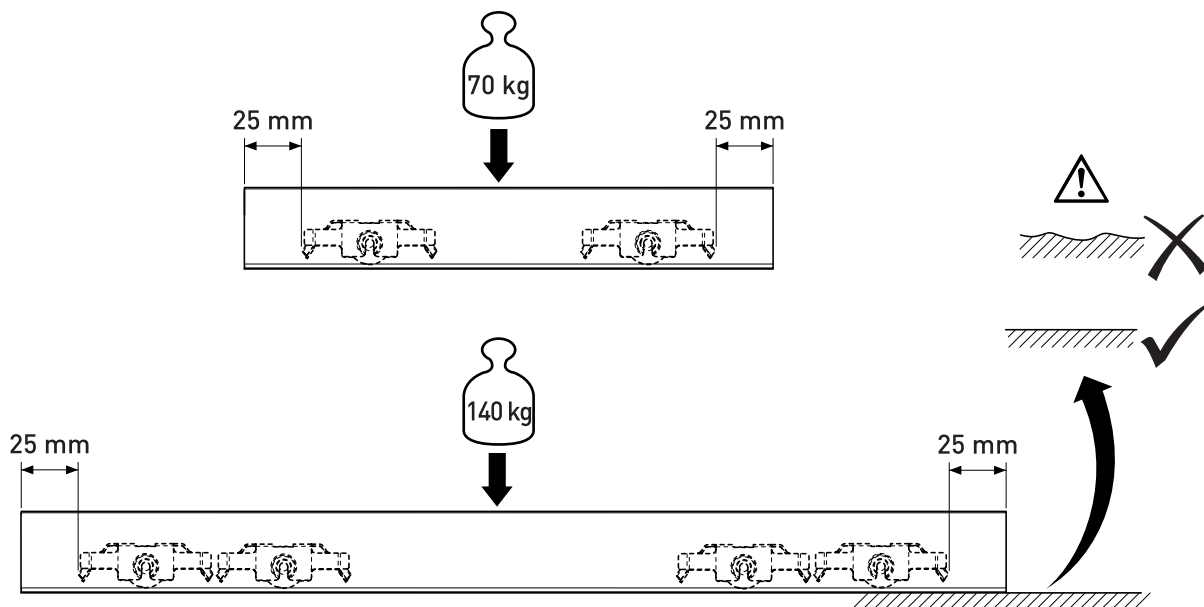
1112.supra.004



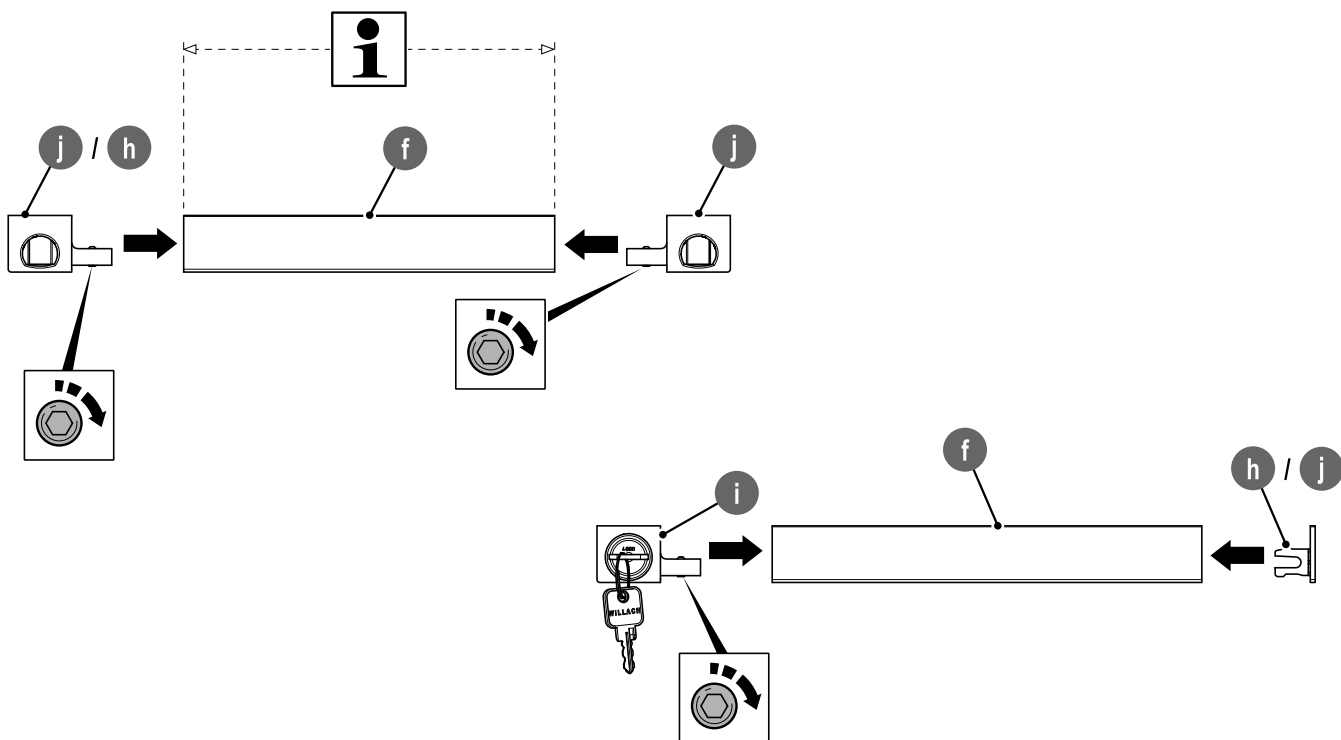
497.robustus.1503



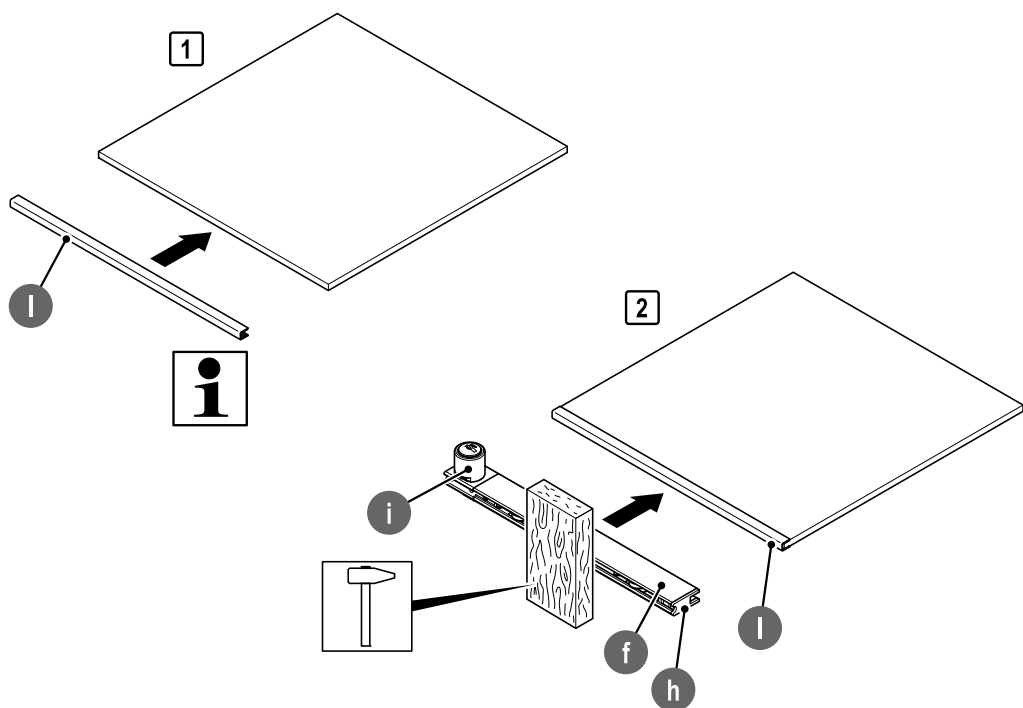
006.supra.1503



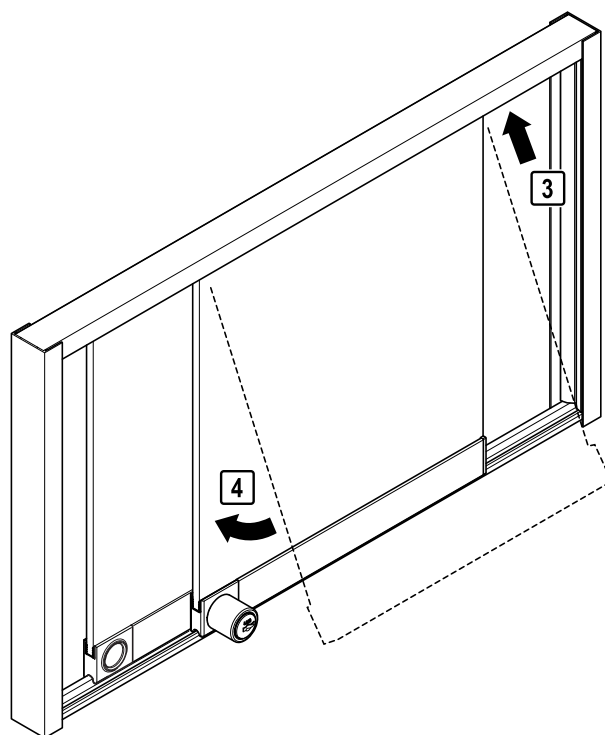
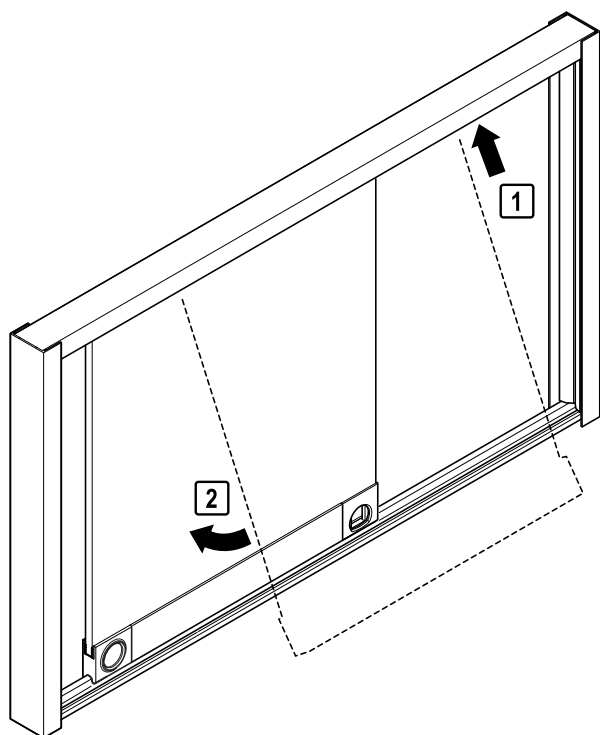
498.robustus.1503



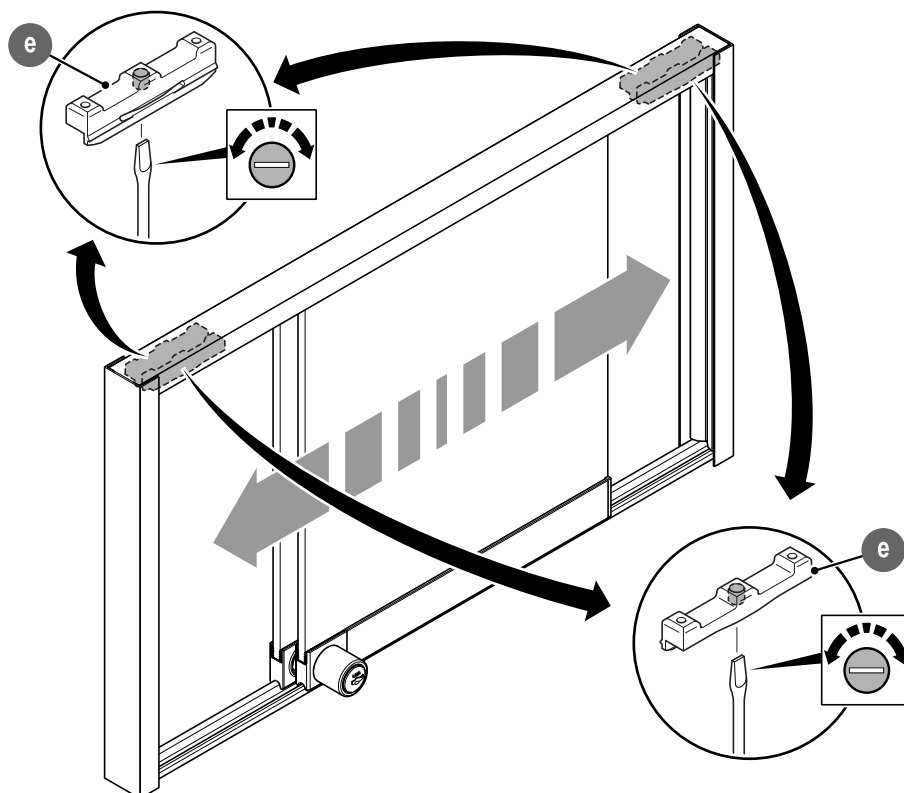
499.robustus.1503



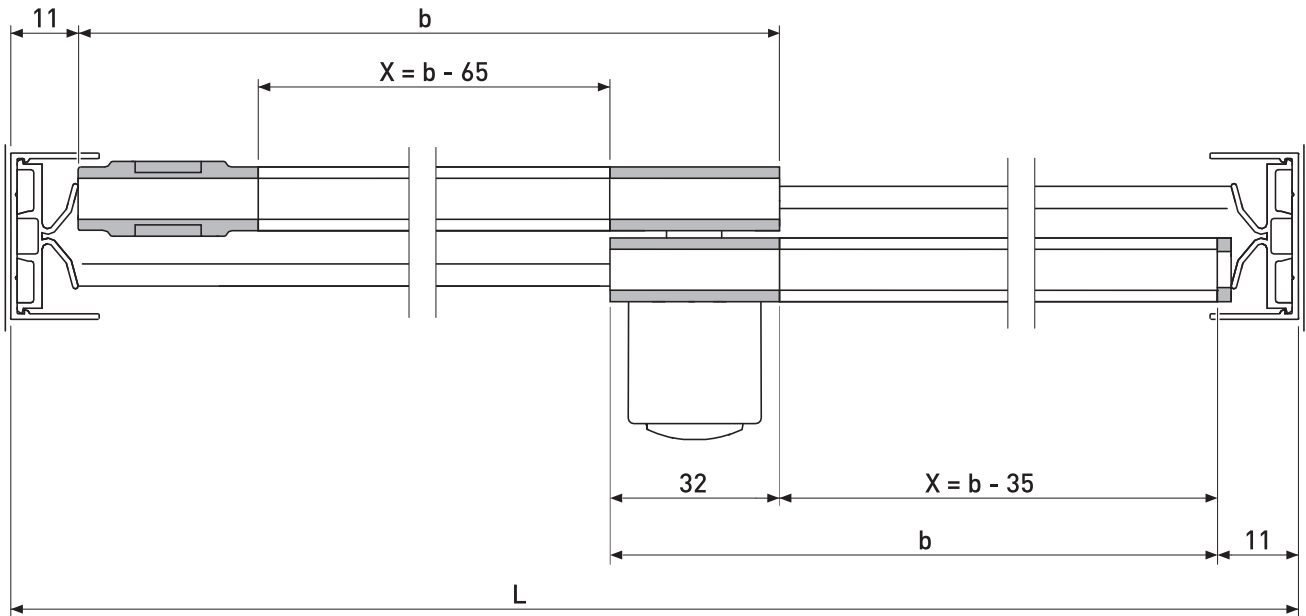
1112.supra.009



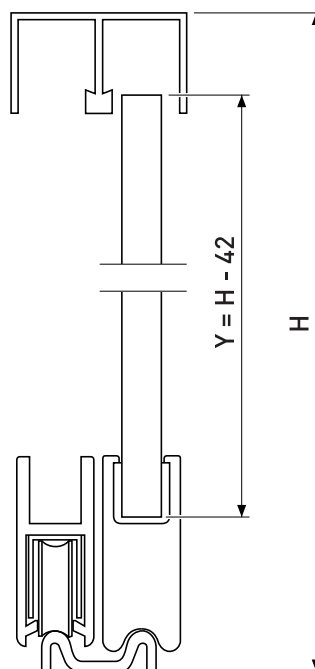
1112.supra.010



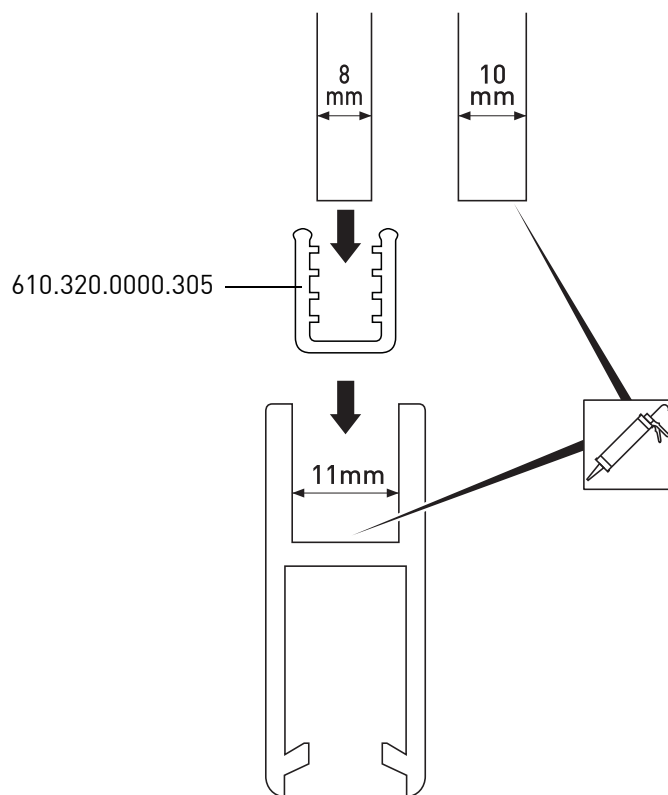
1112.supra.011



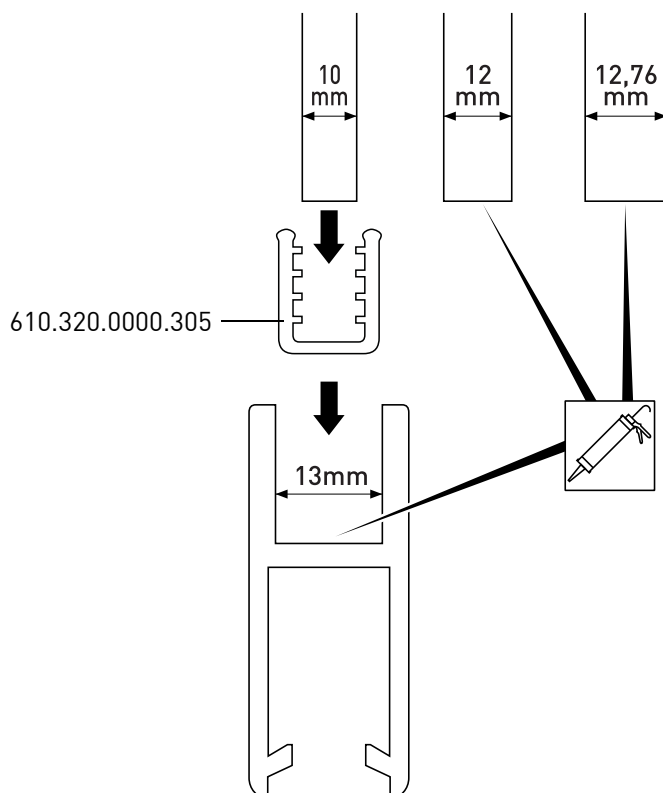
1112.supra.012



500.robustus.1503



501.robustus.1503



502.robustus.1503