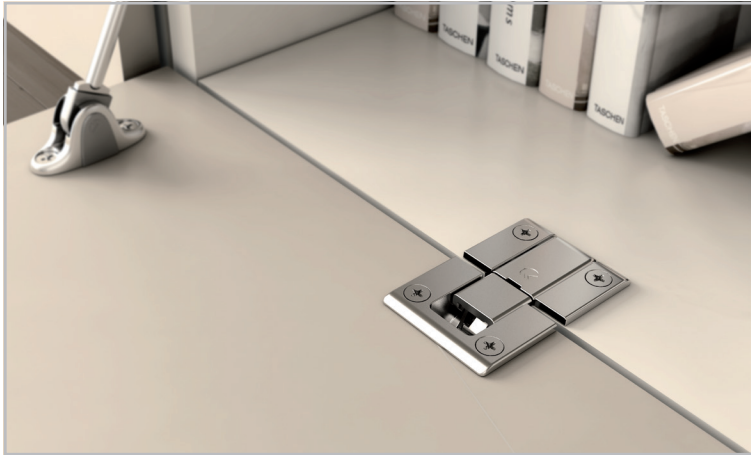




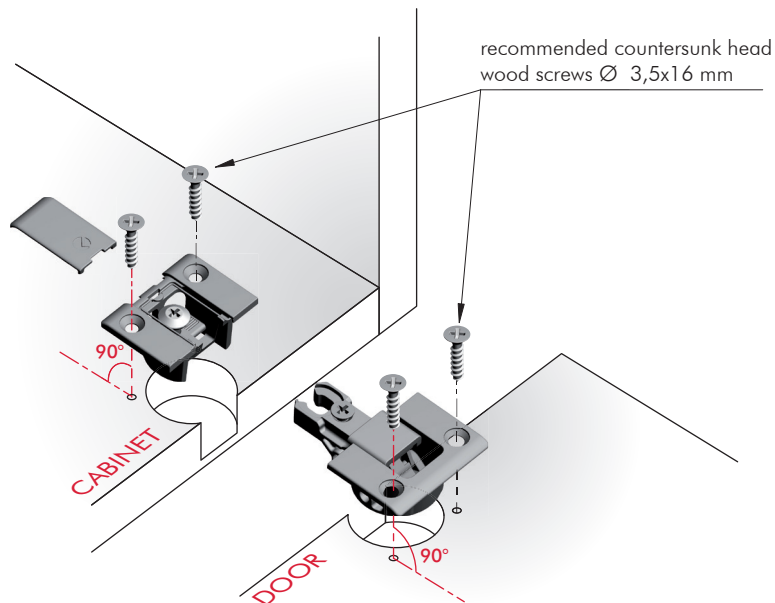
KIMANA



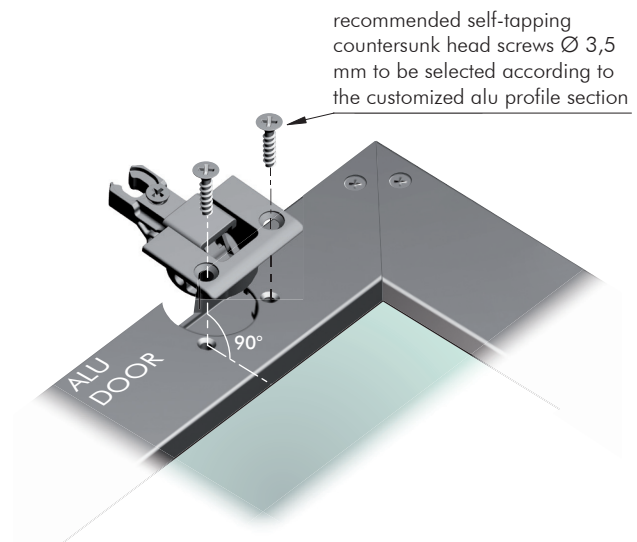
GOOD DESIGN AWARD, 2012

PAT. PENDING
REGISTERED DESIGN 

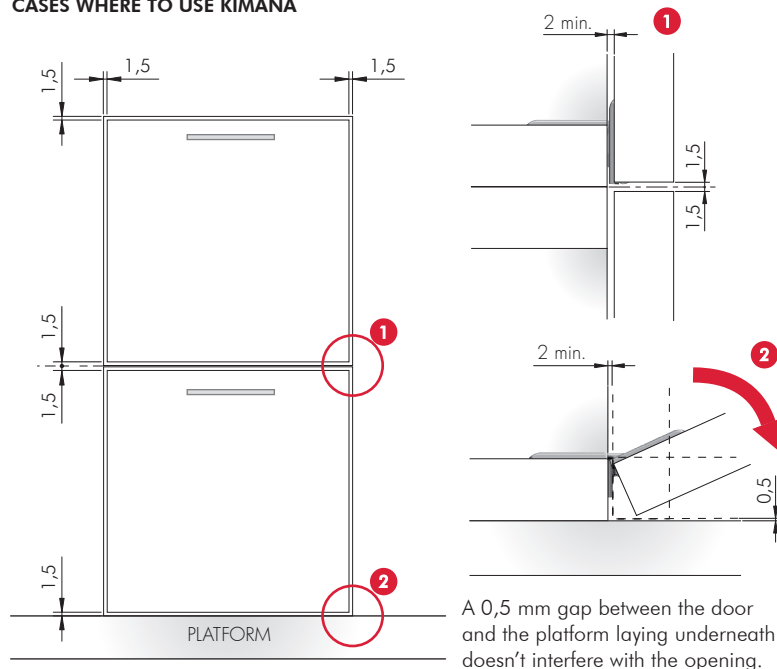
INSTALLATION ON UNIT WITH SOLID DOOR
(Application shown for minimum thickness 18 mm)



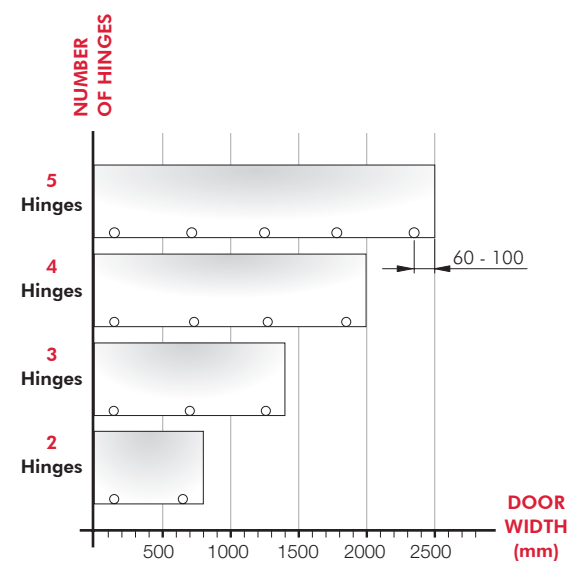
INSTALLATION ON UNIT WITH ALUMINIUM DOOR
(Application shown for minimum thickness 18 mm)



CASES WHERE TO USE KIMANA



RECOMMENDED NUMBER OF KIMANA PER DOOR

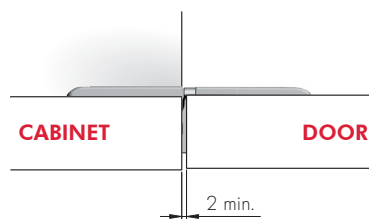
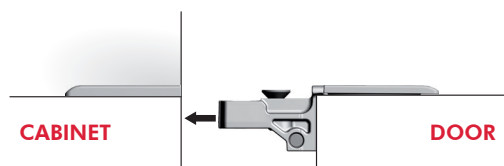


Due to various factors, the quantities stated in the chart are indicative.



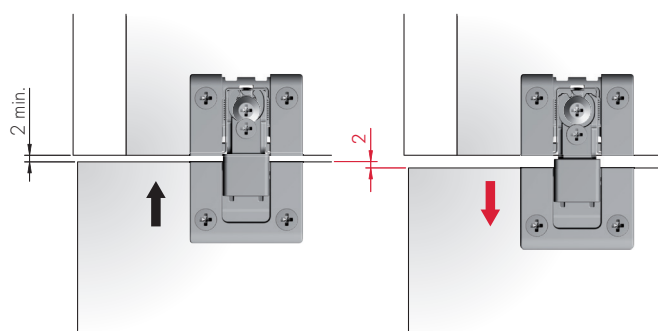
HINGES

DOOR INSTALLATION



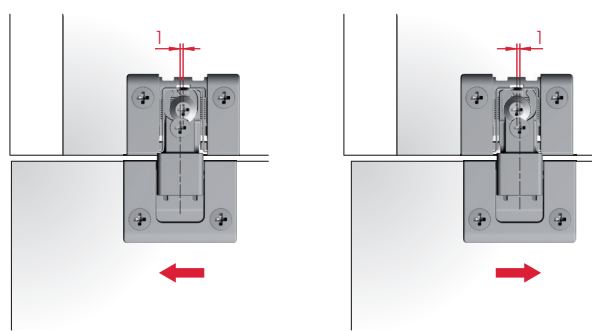
IN-DEPTH ADJUSTMENT 0+2 mm

⚠ TO BE MADE BEFORE LOCKING SCREW OPERATION ⚠



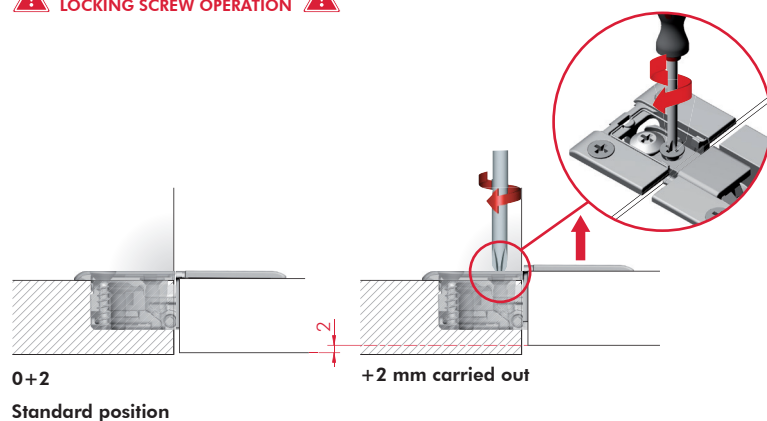
LATERAL ADJUSTMENT 0±1 mm

⚠ TO BE MADE BEFORE LOCKING SCREW OPERATION ⚠



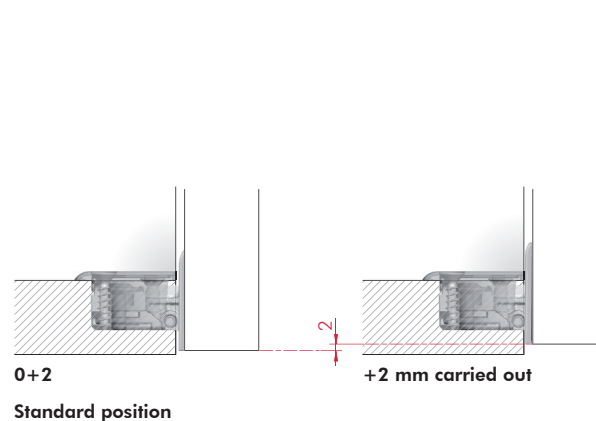
VERTICAL ADJUSTMENT 0+2 mm - DOOR OPEN

⚠ TO BE MADE BEFORE LOCKING SCREW OPERATION ⚠

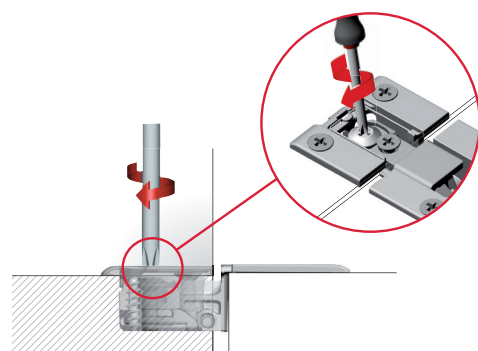


VERTICAL ADJUSTMENT 0+2 mm - DOOR CLOSED

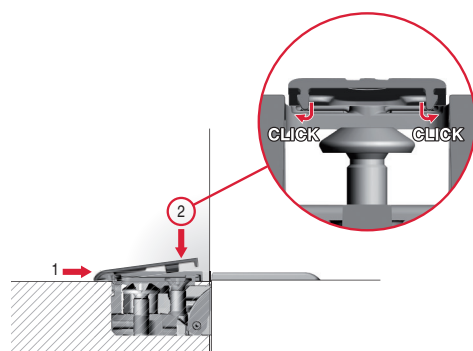
⚠ TO BE MADE BEFORE LOCKING SCREW OPERATION ⚠



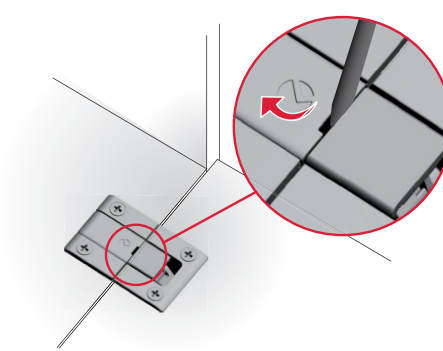
LOCKING SCREW

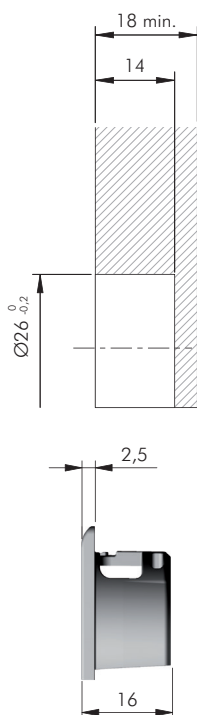
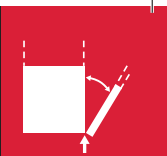


COVER CAP INSERTION

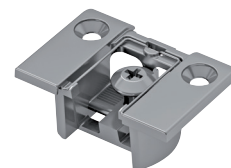
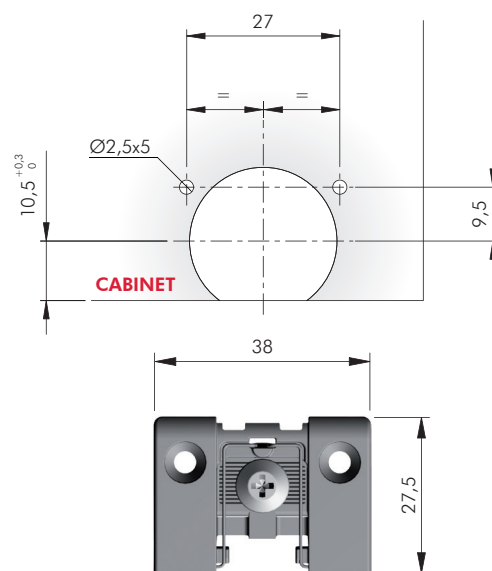


COVER CAP REMOVAL

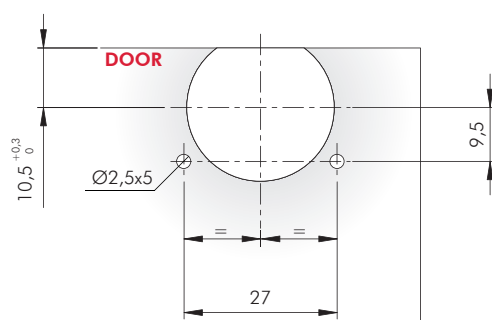
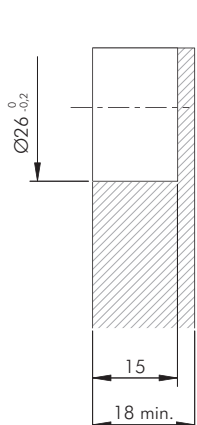
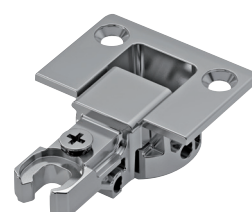
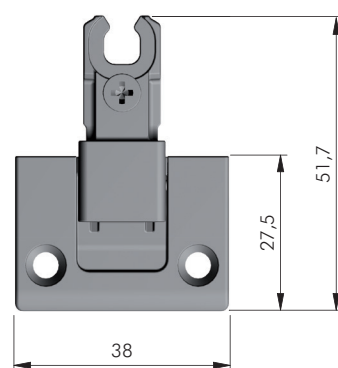




NOTE: For panel thickness lower than 18 mm, refer to "KIMANA ADAPTERS".

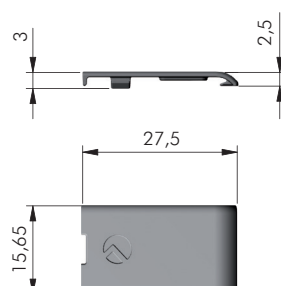


	ZA ST	= 150 pcs.
40120000YA		
40120000HX		
40120000YQ		



NOTE: For panel thickness lower than 18 mm, refer to "KIMANA ADAPTERS".

	ZA ST	= 150 pcs.
40120010YA		
40120010HX		
40120010YQ		

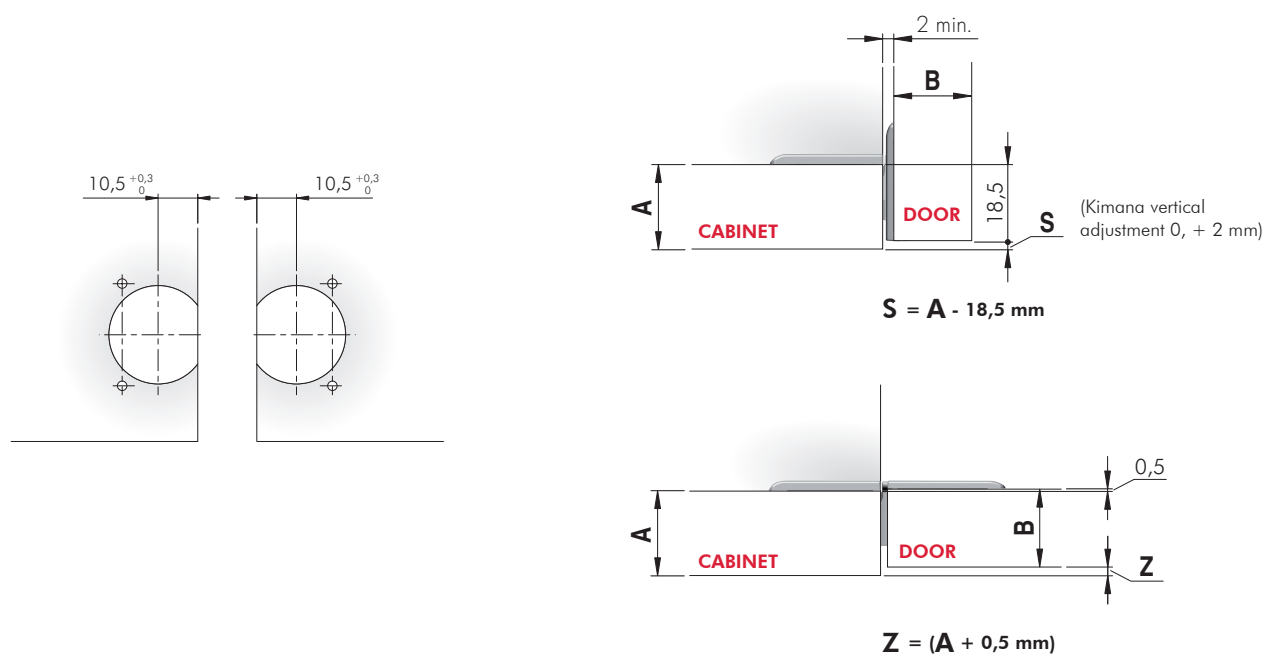


ZA	= 150 pcs.
40120040YA	
40120040HX	
40120040YQ	



HINGES

STANDARD CONDITION



SPECIAL DRILLING PLAN TO MANAGE OVERLAY AND GAP BETWEEN DOOR AND CABINET

